

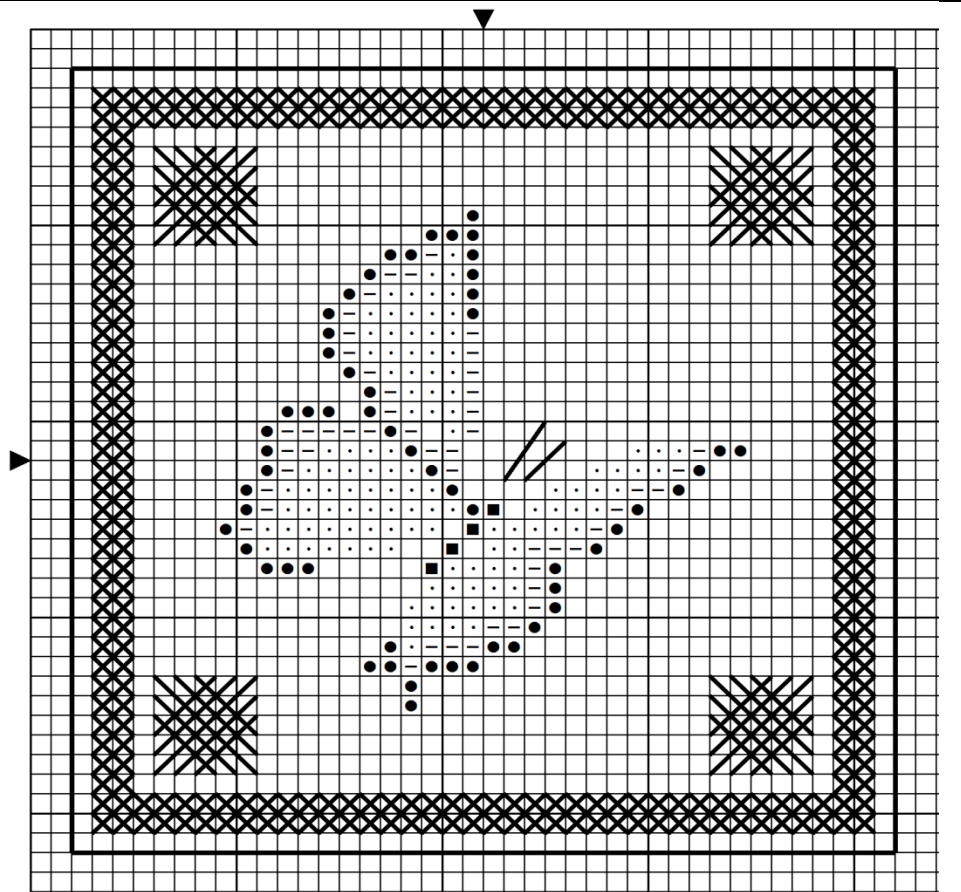


Butterfly Biscornu

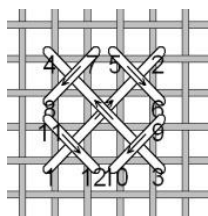


Please note that the chart of our little butterfly is graphed that each square is 1 strand of thread rather than the traditional 2 strands per square.

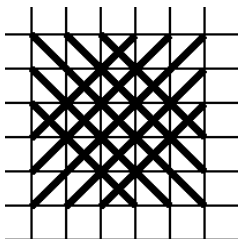
Stitch design using one strand of thread.



Stitch Diagrams



Rice Stitch



Square stitch

Stitching Instructions

- Rice Border** – use 1 strand of Thread Gatherer Sidewalk Chalk ensuring that you finish each rice stitch to ensure colour variation in the border
- Square Stitch** – use 1 strand of 3836 to create this stitch starting by making the large “X” then either working clockwise or counter clockwise
- Butterfly** – stitch the design following the symbols in over one

Sym	No.	Colour Name	Sym	No.	Colour Name
—	3740	Dark antique violet	●	3768	Storm grey
.	3836	Light grape	■	TG	TG Sidewlk Chalk

- Black Line** - choosing any particular colour of your choice backstitch with 2 strands ensuring that when you have completed the backstitch the design measures 20x20 stitches.

Over 100 mythical and fantasy designs that will entice the stitcher!



Hand Dyed Fabrics

Available in more than 25 colours

Just pick your fabric type from Aida, Lugana, Cashel, Belfast, Newcastle and Edinburgh Linens or even an Opalescence to enjoy stitching on a hand dyed fabric!

Check out some of our new colours * Nebula * Parchment * Rhapsody * Fairy Garden * Limerick

383 Cartier Street, North Bay, Ontario P1B 8N4 (705) 476-8568

www.enchantinglair.com