

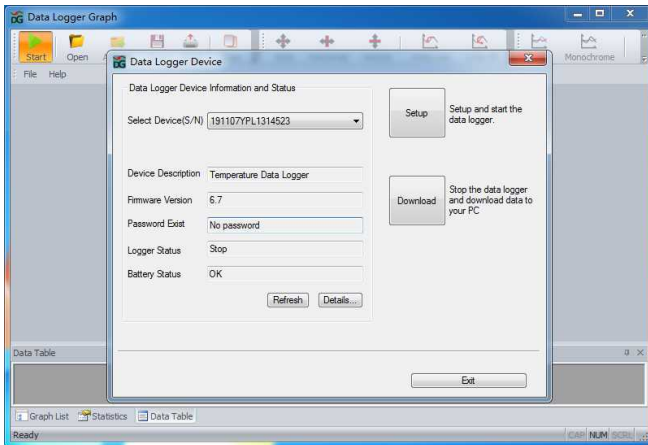
# User Manual

V1.5



you can set logger name, sample rate and visiting password. On the "Channel Settings", you can set high/low limit, enable/disable alarm, and enable/disable alarm hold. Notice that to enable the corresponding channel alarm function so that this data logger can make sound and light alarm. On the "Start and Stop Method", you can select how to start and stop logging by your actual demands. Also all settings can be factory default if first attempts. Click on the "Finished" button or escape with "Cancel".

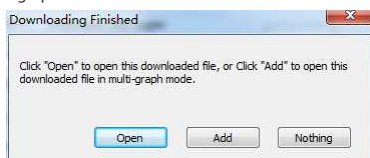
5. After finishing setting up, plug out the data logger. After tightening the lid, put the data logger in the specific work environment. The data logger will start recording according to your settings.



## 6. Download Data

Please follow these steps to download data to your computer:

1. Make sure the data logger battery installed correctly and connected to PC USB port properly.
2. Click on the "Download" button on the "Data Logger Device" dialog. Here you can follow the screen instructions to download and save the data to PC. Please note that you need to input correct password to operate this step if the data logger has been set a password before (No for factory default).
3. After downloading finished, a "Downloading Finished" dialog will be shown, user can click the "Open" button to graph the downloaded data.



2

## 1. Welcome

Please go through this user manual carefully before operating.

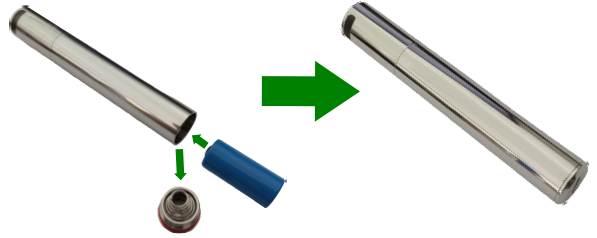
## 2. Ready to Start

All you need to prepare are a PC running under Window XP/ Vista/7/8/10 (32 bit or 64 bit) with USB port and CD-ROM drive, the CD including Data Logger DGraph software and Driver.

## 3. Battery Installation

The standard batteries of this product is 3.6V 2/3 AA battery. Users can purchase batteries from our company or dealers.

Please refer to the following instruction for battery installation:



## 4. Drivers and Software Installation

Please follow these steps to install driver and software:

1. Insert the CD into your PC CD-ROM drive.
2. Double click the "USBpressinstaller.exe" file included on the "CD -> Driver" directory to start installing. Users can see the "Silicon Laboratories USBXpress Device Driver Installer" dialog first, click "Install" to follow the prompts until it shows "Success".
3. Click the "setup.exe" in the "Software" file directory and follow the prompts till complete the software installation.

**Notes:** Users can only log in as "Administrator" to install the software and drivers for some systems. Please contact our after-sales for specific way. When installing software and drivers on computers with security and anti-virus software, be sure to allow installation and writing.

## 5. Setup and Start

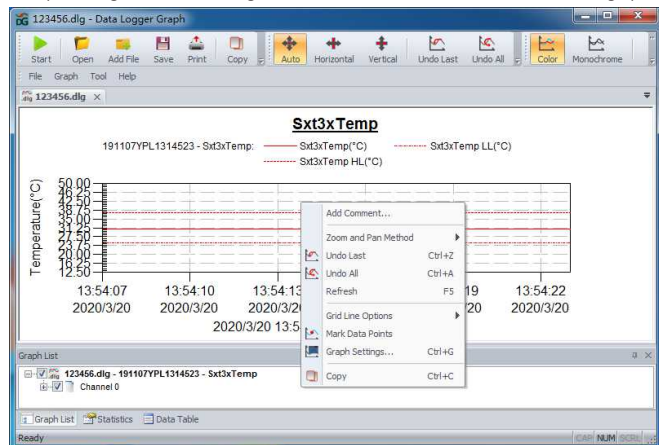
Follow these steps to configure and start the data logger:

1. Make sure the data logger battery installed correctly and connected to PC USB port properly.
2. Double-click Data Logger Graph software.
3. On the left top of the software, you can see "Start" button and click on it. This will open "Data Logger Device" dialog. Select data logger device that will be set (or default). Here you check the serial No., firmware version, status, etc. Of the selected data logger device. If no information display, then you have to check if the connecting or the driver is normal.
4. Click on the "Setup" button to load "Data Logger Setup" dialog. On the "General",

1

## 7. Graph

1. User can open a data logger file (\*.dlg, \*.mdlg) via the menu "File->Open", and the graph will be shown.
2. Zoom in: Use the mouse to click and drag a box around any graph area to magnify the area selected. Zoom out: Click on the "Undo Last" or "Undo All" button on tool bar to show last graph area or the original graph area.
3. Pan: Press and hold the mid-button of the mouse at any graph location, and move the mouse to pan the graph area.
4. Zoom and Pan Method. Auto: Zoom and pan in any direction. Horizontal: Zoom and pan only in horizontal direction. Vertical: Zoom and pan only in vertical direction. Manually: Set the start time and end time for horizontal axis, and set the scale for the vertical axis.
5. Mark Data Points: Click right-button on graph area to show the pop-up menu below, click "Mark Data Points" to show marks on all sample point locations.
6. Graph Settings: Click right-button on graph area to show the pop-up menu below, click "Graph Settings" to show a dialog. User can set color, font, line size and unit for the graph.



## 8. File Export

1. Click "file -> save as" to save the currently opened file or the display area of the current curve as different file types, including txt, csv, xls, jpg, bmp and other format files.
2. If you want to store the current display area, you need to use the mouse to select the display area, and the type of the file to be saved should select the option with "for window".

## 9. Print

1. To print the graph, statistics and data table, click on the printer icon on standard toolbar or select "Print" from the "File" pull-down menu.
2. User can also click the "File->Print and Export Options" select the printed contents in the following dialog.

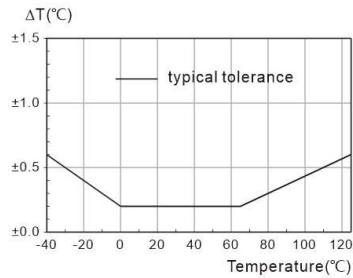
3

## 10、LED Indication

1. After finishing configuration, LED light will flash. When logging, the LED will flash once every 5s. When not logging, the LED will flash twice every 5s.
2. The flashing time is 3 minutes, and within 3 minutes, if temperature exceeds the range of -20~60°C, data logger will still work normally, but LED light will go out immediately.

## 11、Specifications

Measuring accuracy	±0.2°C (0°C~+65°C); The accuracy of other temperature ranges is shown below
Measuring range	-40°C~+125°C
Resolution	0.1°C
Data storage capacity	32000
Sample interval	1 s~24 hours
Start mode	Start at a certain time; Start immediately
Stop mode	Memory full; When into USB
Operation environment	-40°C~+125°C (Non-condensation)
Storage environment	-40°C~+85°C (No battery)
Power supply	3.6V 2/3 AA high-temperature battery, user-replaceable
Protection class	IP67
Size	Φ18mm x 115mm
Weight	About 95g (No battery)
Standards	CE, RoHS, EN 12830
Warranty	12 months



## 12、Notes

- When setting or reading record data, please keep sufficient power.
- Pay attention to the positive and negative poles of the battery.
- Make sure the battery is full charged before starting recording.
- Please tighten battery cover and USB cover before use to prevent liquid and dust infiltration.
- After taking out data logger from low temperature environment, it is necessary for the instrument to return to normal temperature before opening lid so as not to affect its function.
- After recording, before opening cover, clean liquid or dust on the surface of data logger.
- Low-power batteries or damaged batteries should be removed in time and recycled or disposed according to local regulations.
- Please read relevant documentation carefully before operation.
- Any questions, please contact after-sale in time.

### Tips:

For further information on the software, you can access the Help menu on the software interface or other documents on the CD.

## 13、Warnings

- **Use instrument inappropriately will cause dangers!**
  - Do not damage battery or attempt to charge it.
  - Keep batteries away from fire.
  - Keep batteries out of reach of children.
  - Don't use instrument in oxidizing and corrosive environment.
  - Please use our designated standard battery.
  - It must be used under the environmental conditions specified by this instrument (especially the operation environment), otherwise the battery may explode!
  - We will not be responsible for any danger in the use process if it is used in violation of regulations.
- **The inner rubber ring of the instrument is an important waterproof and dustproof device, unauthorized dismantling is prohibited!**
  - Dust and liquid around the rubber ring must be inspected and cleaned before using. Or the protection level of the instrument will be lowered.
  - If any damage is found, please contact the after-sale service and repair it before operation.

4



5

