

Robert Addison Locations and References

Escanaba, MI:



Shadowed Walk



Corner of 8th Avenue S. and Lakeshore Drive in Escanaba, MI.



Corner House



Corner of 6th Avenue S. and S. 9th Street in Escanaba, MI.



Waiting



Corner of S. 7th Street and 4th Avenue S. in Escanaba, MI.



Mid-Summer Dreams



Corner of S. 7th Street and 4th Avenue S. in Escanaba, MI.



January Morning



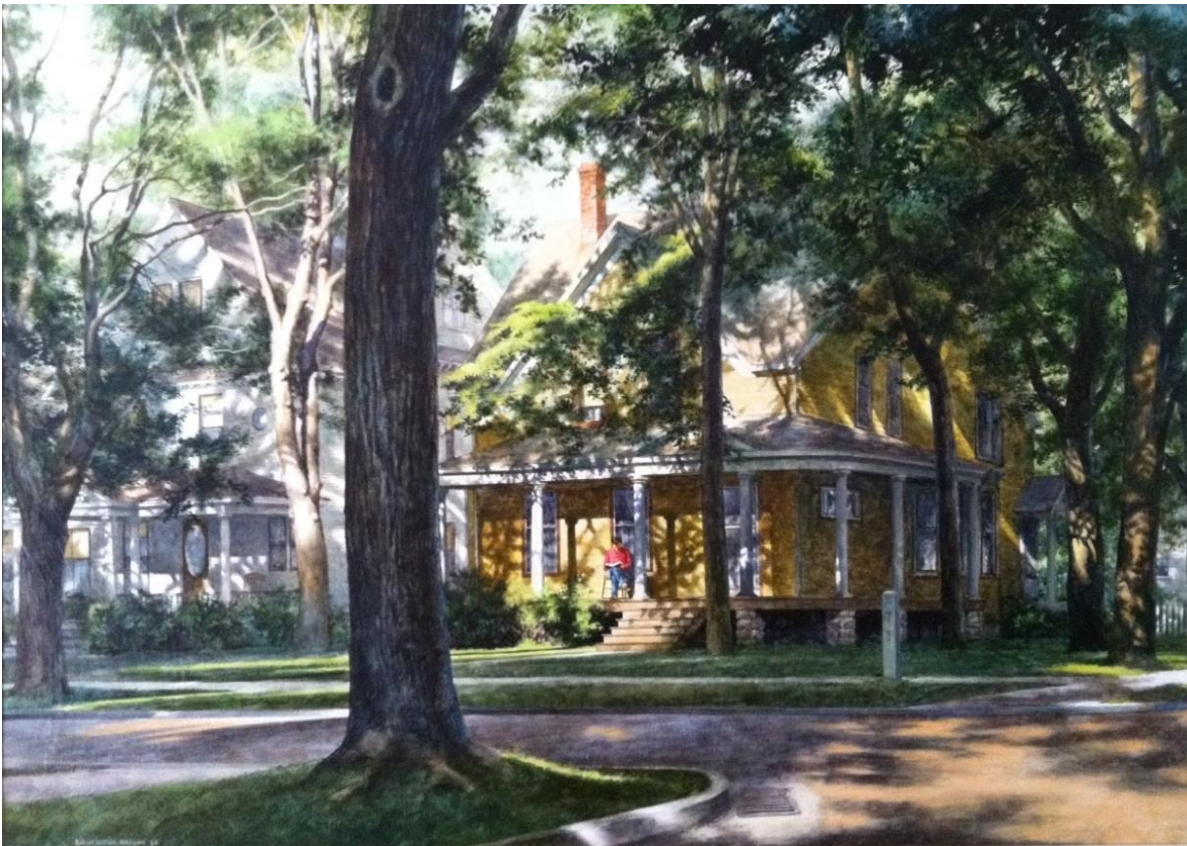
Winter Walk



Winter Walk prelim

All three pieces depicting house at the corner of S. 7th Street and 4th Avenue S. in Escanaba, MI.





Morning Light



Corner of S. 7th Street and 4th Avenue S. in Escanaba, MI.



Rooms For Let



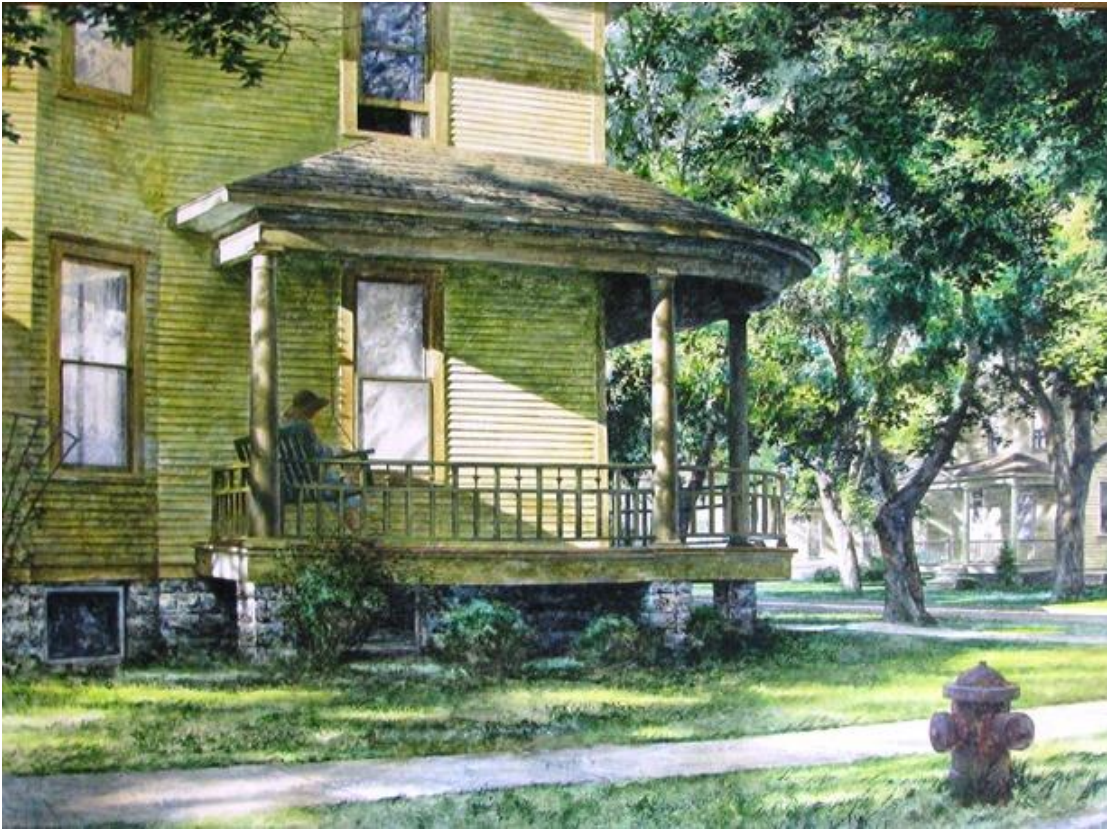
Formerly located on 1st Avenue S. Escanaba, MI.



Mellow Afternoon



Corner of S. 5th Street and 2nd Avenue S. in Escanaba, MI.



Summer Afternoon



Corner of South 9th and 5th Avenue South, Escanaba, MI



Home For Lunch



South 9th and 5th Avenue, Escanaba, MI.



Dreamy Afternoon



South 9th Street between 1st and 2nd Avenue South, Escanaba, MI.

Additional Escanaba references but no address information:



Winter Sunset





January Morning





Quiet Night





December Night



Night Fantasy



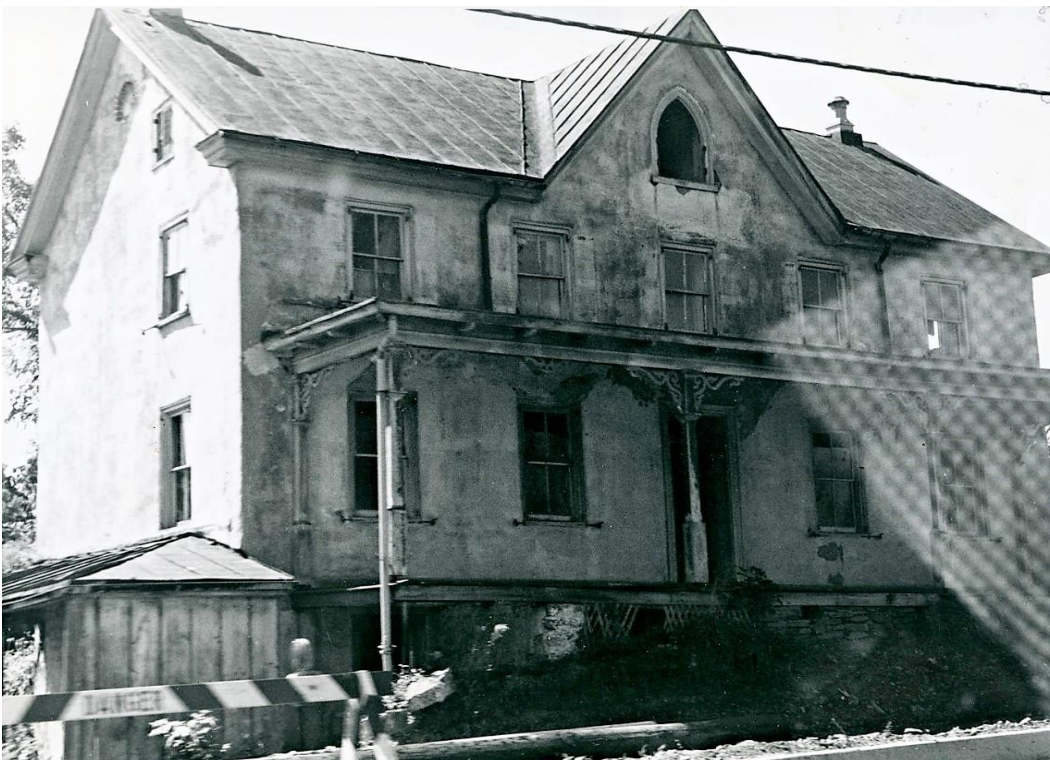


Hemingford Home





Escanaba Farmhouse





Winterset





Silent Sentinel



Barn In Summer

Both paintings above used the *Winterset* reference location shown on previous page.



Summer Storm





Snow Scene With White

House At Sunset

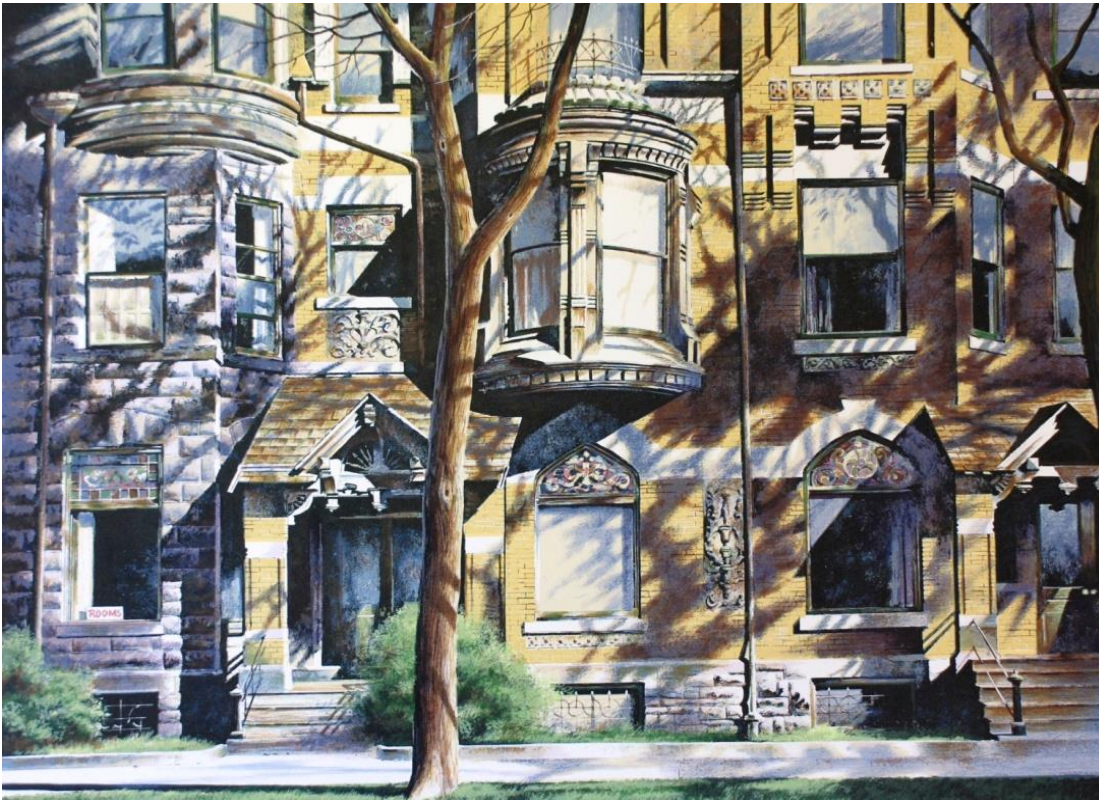




Winter Road



Chicago, IL:



Morning Shadows



172/168 W. Eugenie in Old Town, Chicago, IL.



Two Against The Storm



Reference photo of entryway formerly located at 1559 N. LaSalle St in Old Town, Chicago, IL.



Quiet Corners



Intersection of Damen, Irving Park, and Lincoln on the north side of Chicago.



Night Lights



W. Evergreen Ave, Chicago.



City Light



Corner of W. Evergreen and N. Noble, Chicago

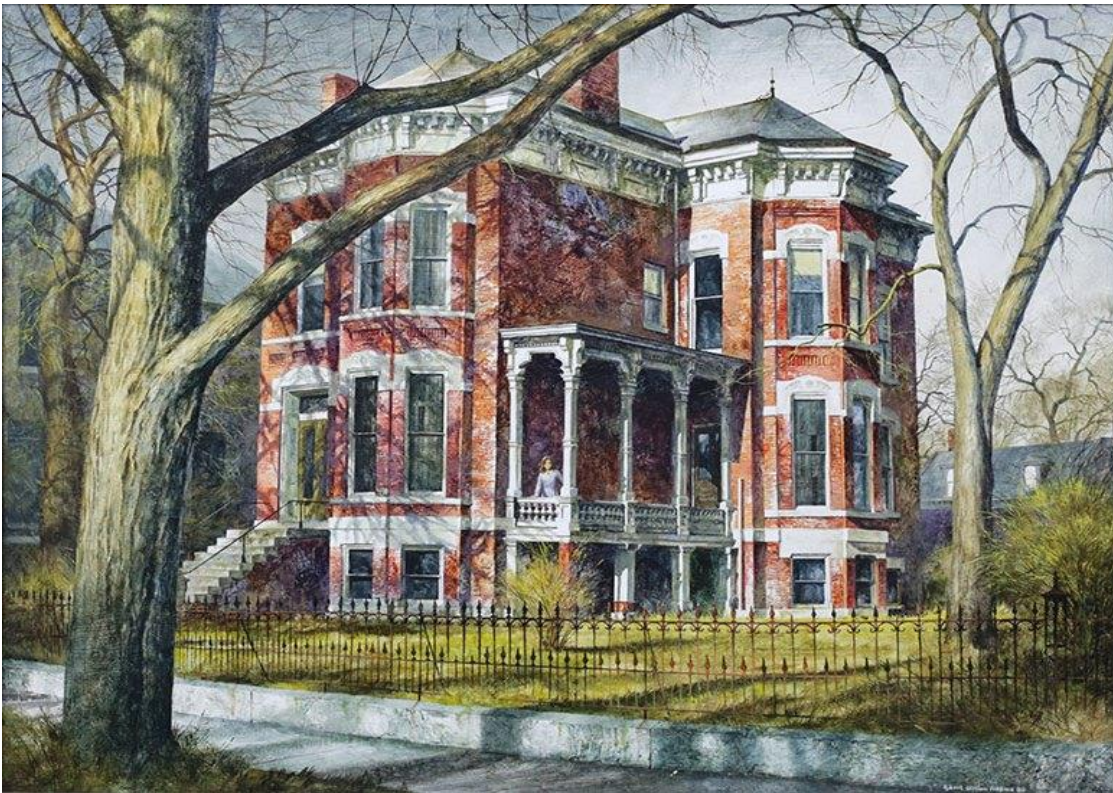
Reference for *Night Lights* Serigraph & painting as well as *City Light* painting located across the street from Stanislaus Kostka Church at 1351 W. Evergreen in Chicago.



Mid-late 70s



December, 2014



Mansion, Wicker Park



1417 N. Hoyne just north of W. Schiller St. and N. Hoyne Ave. in Wicker Park.



Heritage



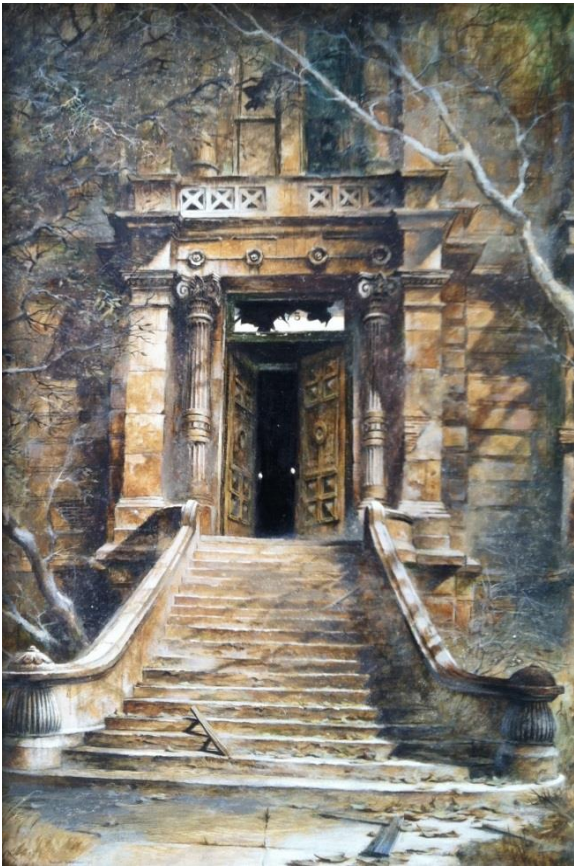
1417 N. Hoyne just north of W. Schiller St. and N. Hoyne Ave. in Wicker Park.



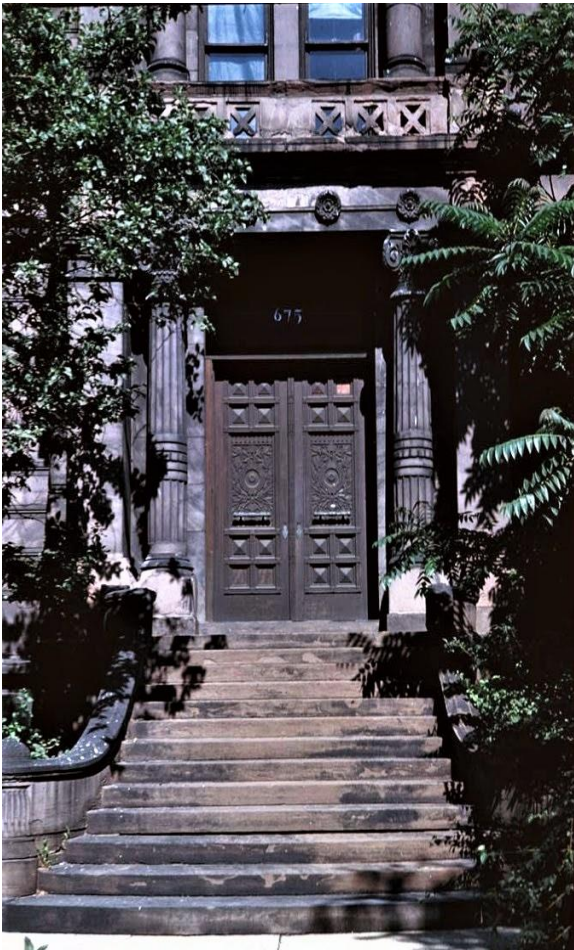
Mansion, Wicker Park #2



1415 N. Hoyne. Northeast corner of W. Schiller Ave and N. Hoyne Ave in Wicker Park.



McCormick Mansion #1



Formerly located at 675 N. Rush Street, Chicago, IL. Demolished in 1955



McCormick Mansion #2



Formerly located at 675 N. Rush Street, Chicago, IL. Demolished in 1955.



Montgomery Ward Building

(Northwestern University Medical School)



303 E Chicago Ave (corner of Chicago and Fairbanks), Chicago.



Northern Trust Bank



Corner of LaSalle & Madison, Chicago, IL.



Kraft Building



500 N. Peshtigo Court, Chicago

(1939-2003)



Art Institute Looking South



111 S Michigan Ave, Chicago



Chicago Afternoon



North Michigan Avenue at East Hubbard Street, Chicago



Water Tower Place



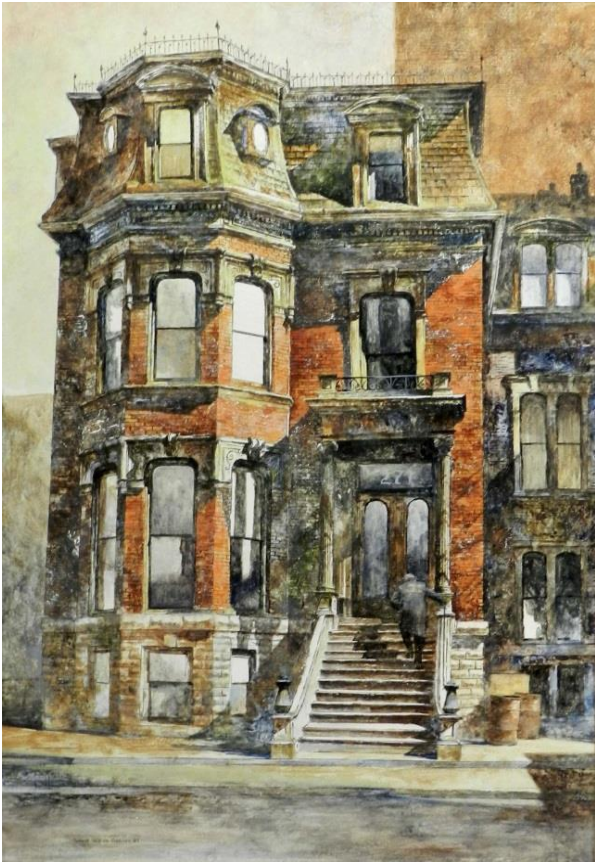
North Michigan Avenue and East Delaware Place, Chicago



Mag Mile



Michigan Avenue looking south at DuSable Bridge, Chicago



Back Home Again



Chicago Three Story Walk-Up



619 N. Wabash, Chicago IL.



Orpheum Theatre



175 N. State Street, Chicago, IL.



Formerly at 6427-41 N. Sheridan Rd, Chicago, IL. Demolished in 1990.



Formerly at 6427-41 N. Sheridan Rd, Chicago, IL. Demolished in 1990.



Afternoon Brownstones



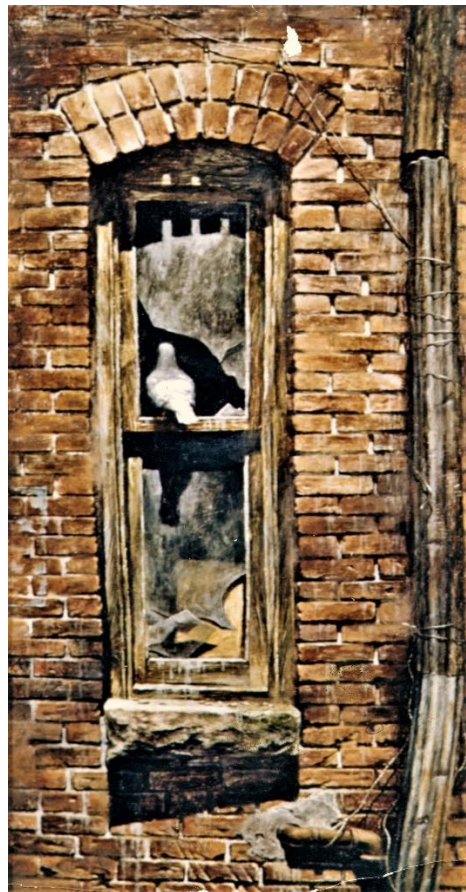


The Townhouse



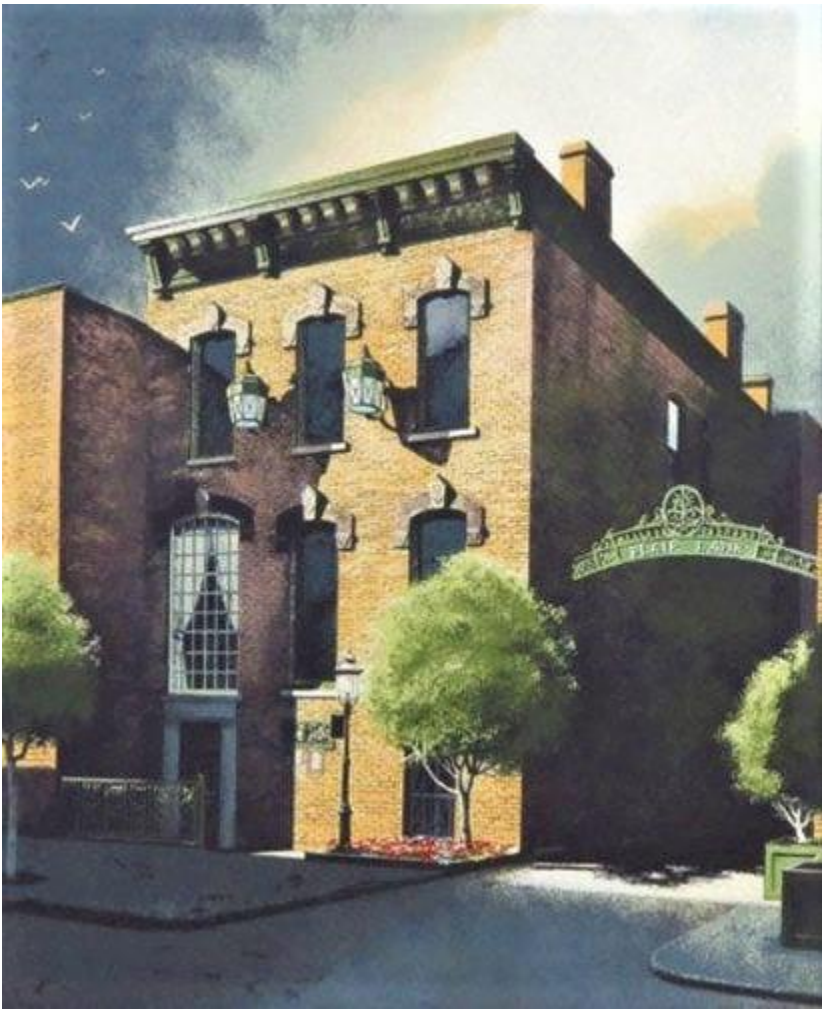


View from side of reference location and building for *The Townhouse*.



Chicago Alley Study





Flair House



214 W. Erie, Chicago, IL.

Evanston, IL



Wieboldt House



2601 Orrington Ave, Evanston, IL. On the campus of Northwestern University

Boise, ID:



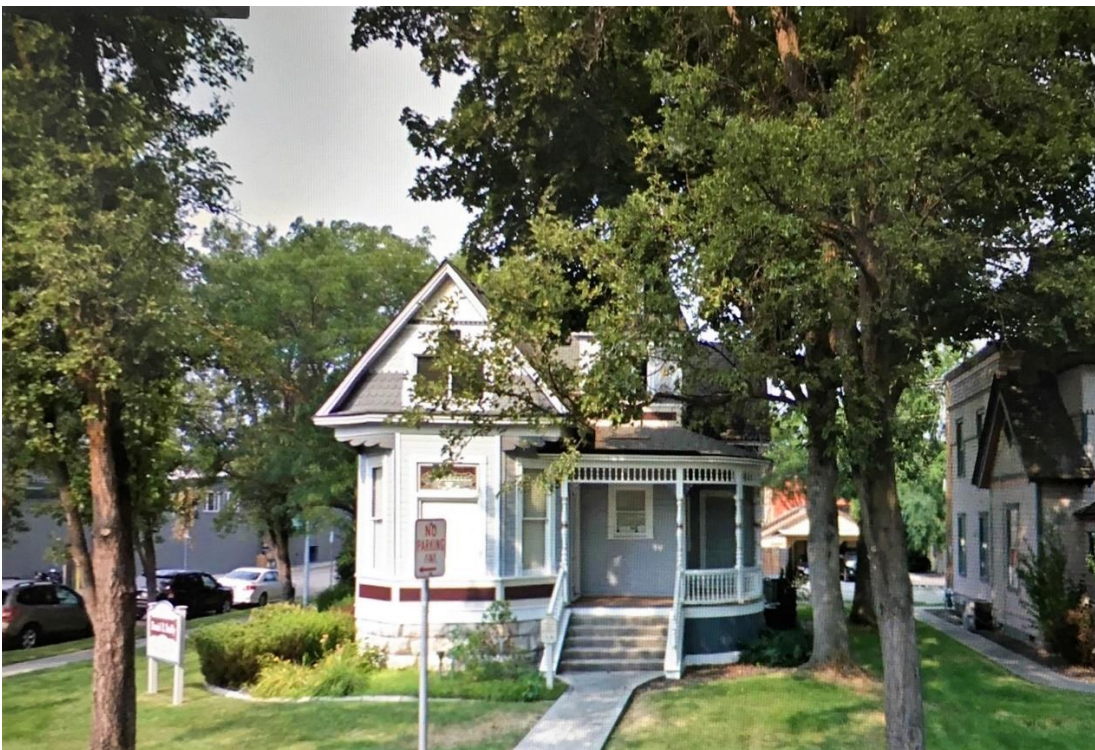
Queen Anne



1601 N 7th St: Corner of N. 7th Street and W. Sherman Avenue.



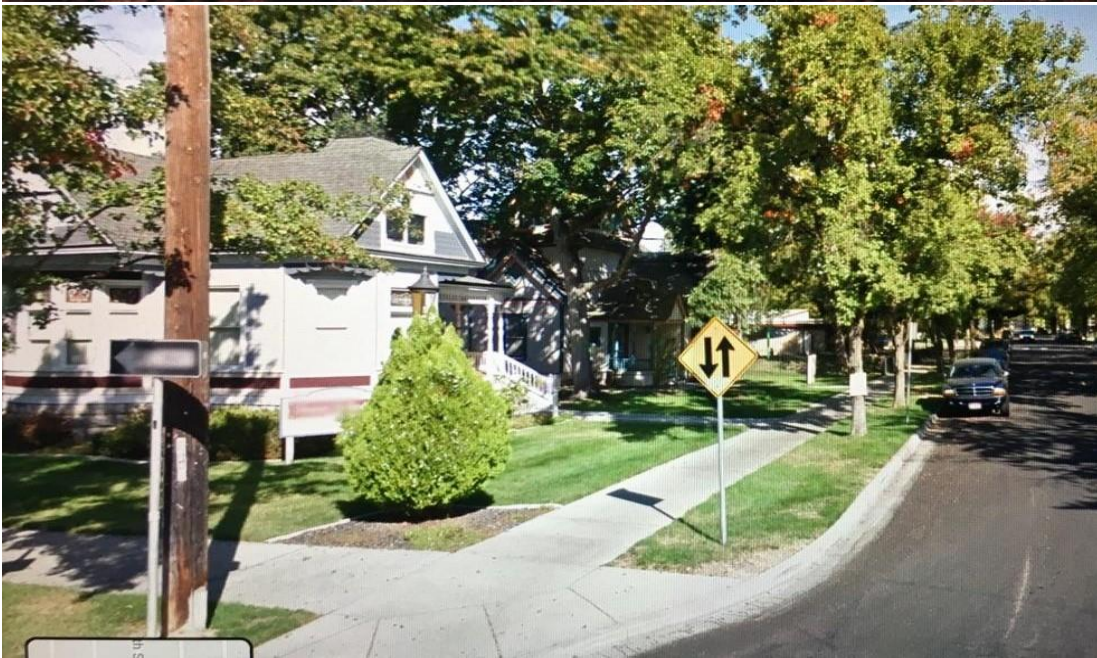
Shadowed Haven



1003 N. 8th Street: Corner of N. 8th Street and W. Union Street.



Sunlit Morning





N. 8th Street



Two paintings above at corner of N. 8th Street and W. Union Street.



School's Out



1111-1115 N. 8th Street



Back From School



Bush House at 1020 W. Franklin Street at the corner of W. Franklin and N. 11th Street.



Elegant Survivor

Above and below: Corner of W. Franklin Street and N. 11th Street.



Afternoon Shadows



Tall Trees



Home For Lunch

Both paintings above: 1016-1020 W. Franklin Street

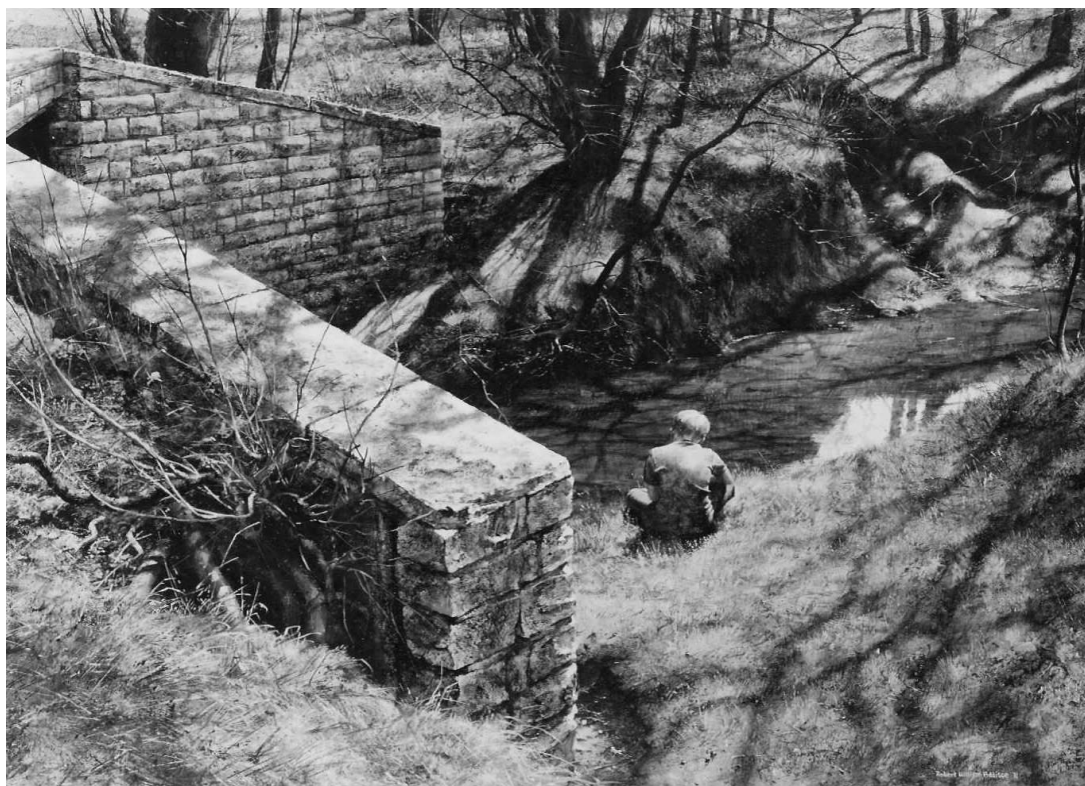


Portrait of Elmer.



Outside Addison childhood home 1100 N. 8th St.

Additional Reference Locations:



Hide-a-Way



83rd and Harris, Clarendon Hills, IL



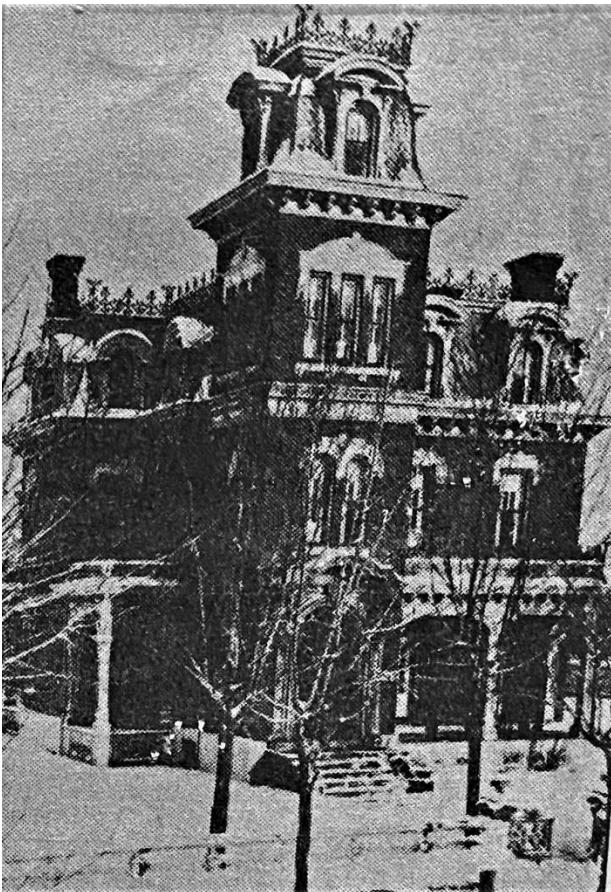
Clock Tower



Henry County Courthouse, Cambridge, IL.



Victorian Sentinel



Located across the street from George Eastman's (Eastman Kodak) 49 Jones Street home in Rochester, NY.

Southern Heritage Series References:



Belle Grove



Formerly located near White Castle, LA just south of Baton Rouge. Demolished in 1952.



Seven Oaks



Seven Oaks #2



Seven Oaks #3



Seven Oaks Plantation formerly located in Westwego, LA just across the Mississippi River from New Orleans. Demolished in 1977.



Labatut House



Located at the crossroads of LA 420 and LA 10 in New Roads, LA.



Magnolia Plantation, 1975



Magnolia Plantation, formerly located in Lower Plaquemines Parish, just below West Pointe a-la- Hache, LA.





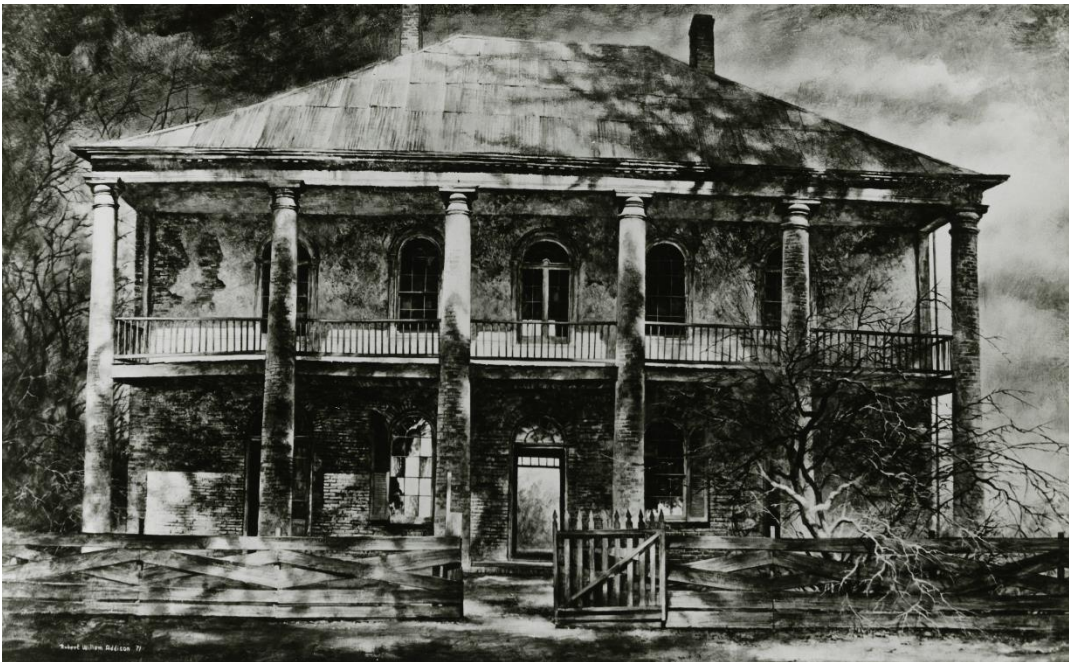
Asphodel Plantation 4626 Hwy 68, Jackson, Louisiana



Land's End Plantation



Formerly located near Stonewall, LA at the end of Parish Road 793, 0.5 miles north of Red Bluff Road. Destroyed by fire in 1989.



Chretien Point Plantation



665 Chretien Point Rd, Sunset, Louisiana.



Orange Grove



Formerly located near Braithwaite, LA about 16 miles southeast of New Orleans. Destroyed by fire in 1984.



Woodland Plantation, 1971

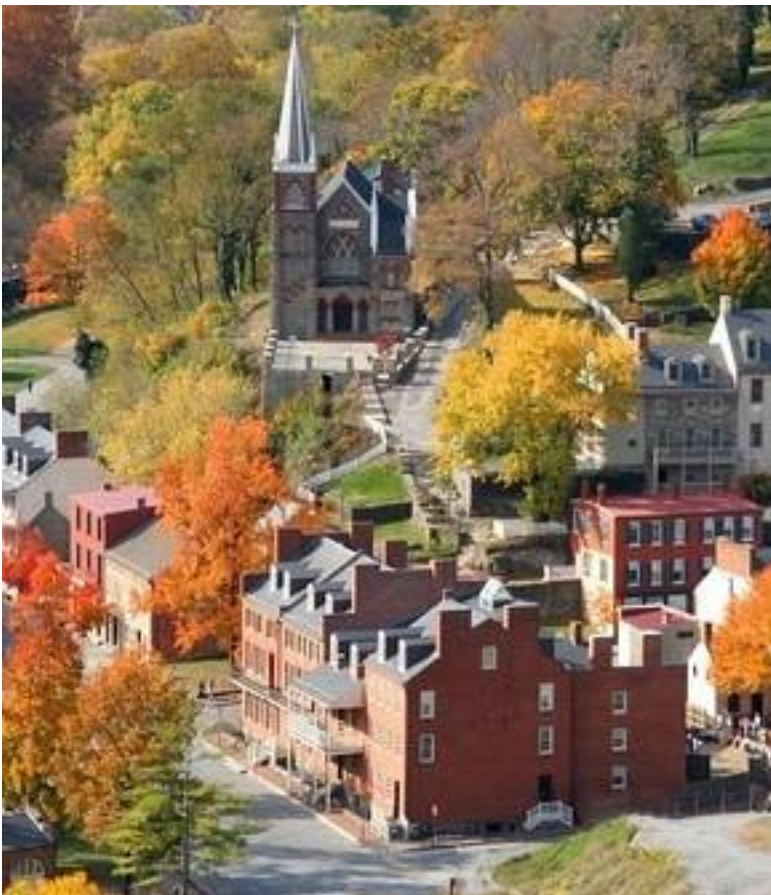


21997 Highway 23, West Point a La Hache, LA

Harper's Ferry, WV series:



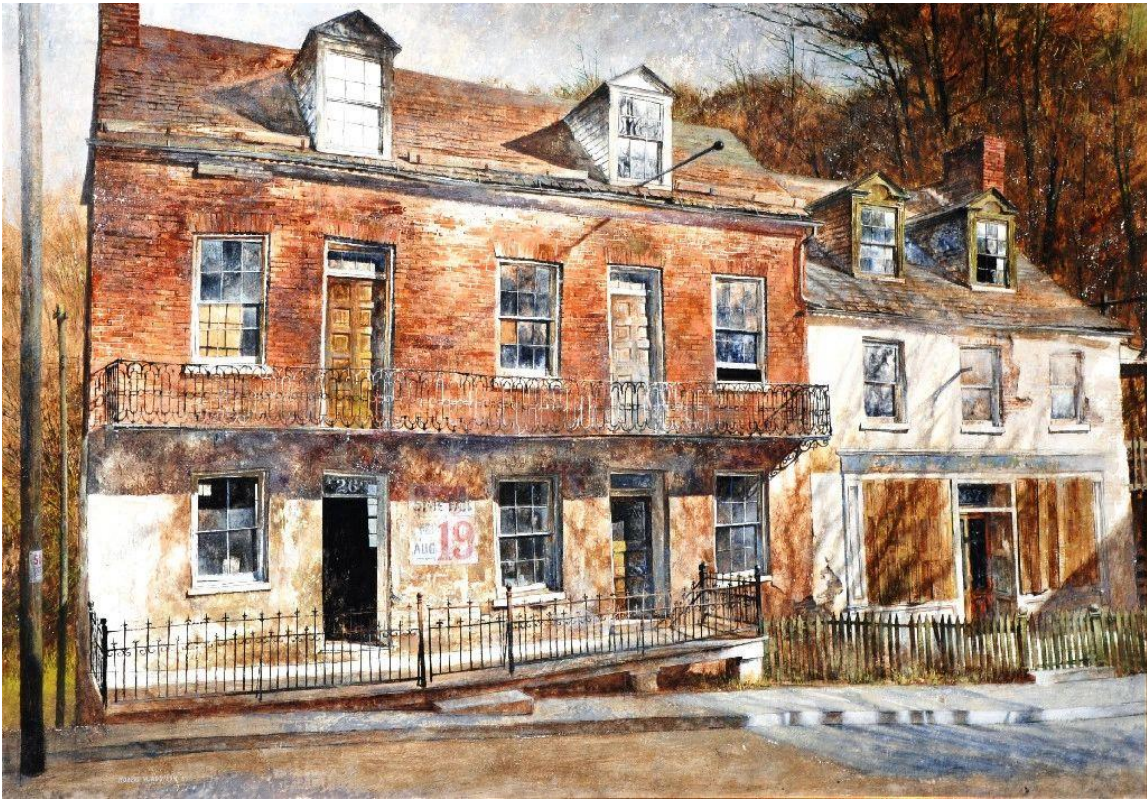
Storm Over Harper's Ferry





Return To Harper's Ferry





In Days Gone By

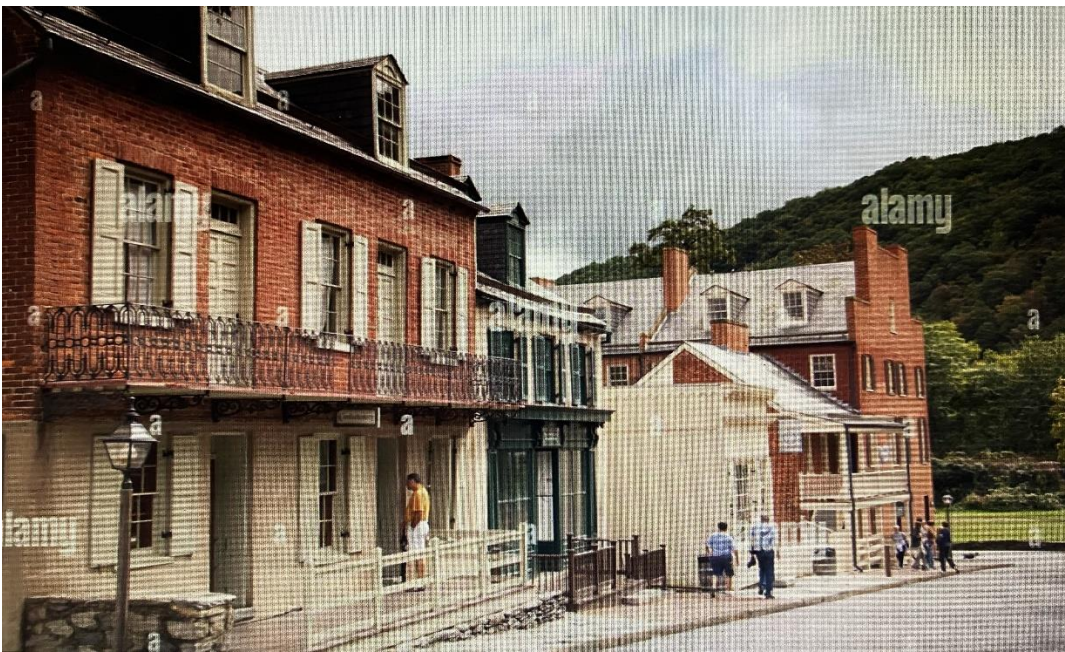


Harper's Ferry

Afternoon

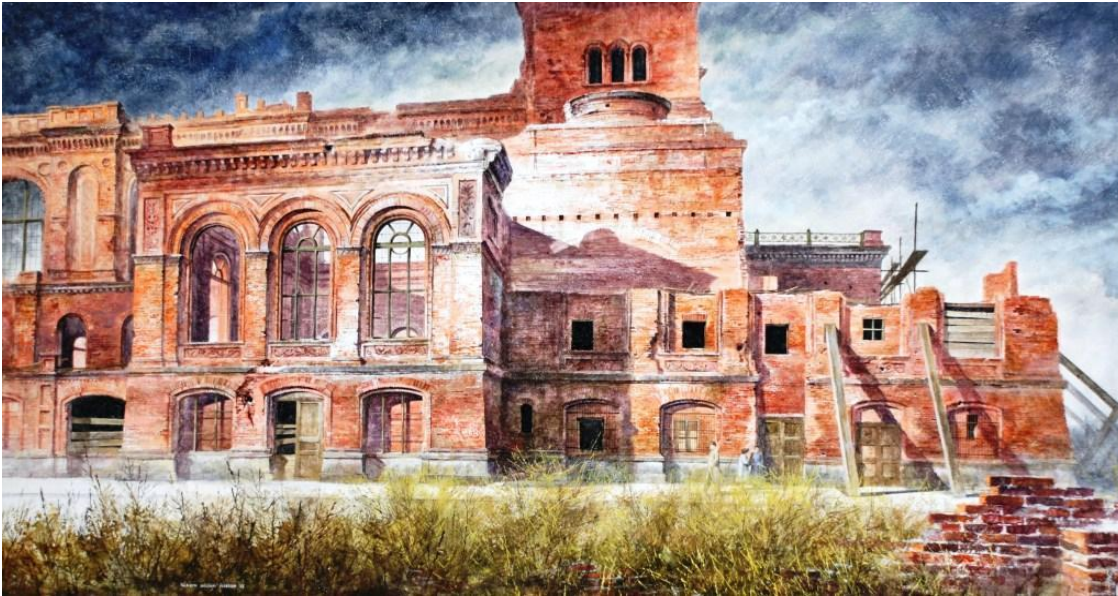


30 High Street



30 & 25 High Street

European Locations/References



Anhalter Bahnhof, 1973



Anhalter Bahnhof train

station, Berlin, Germany



Red Doors Of Amiens

Cathedral



Amiens Cathedral, 30

Place Notre Dame, 80000 Amiens, France



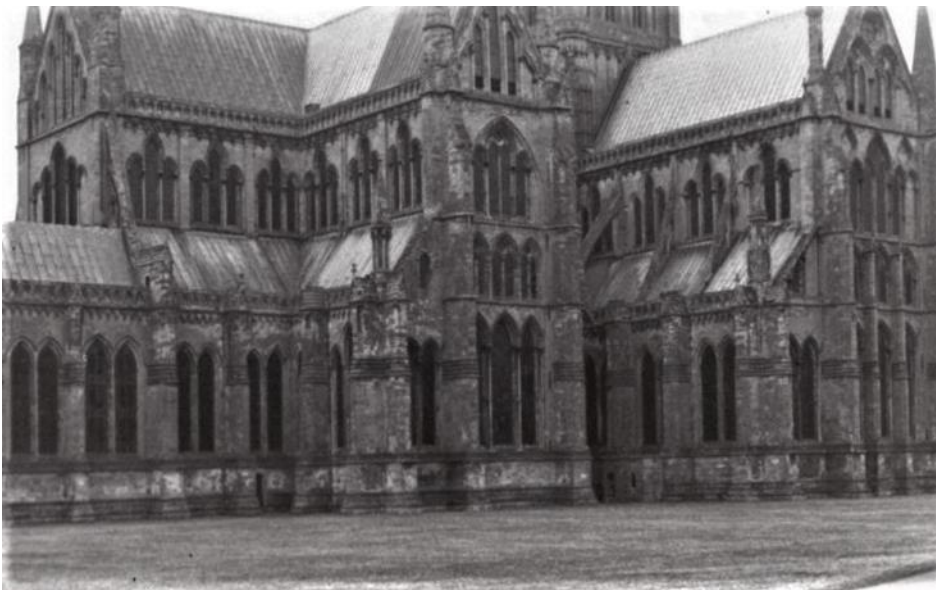
Chateau de Farcheville



Route de Farcheville, 91880 Bouville, France



The Churchyard



Miscellaneous References:



Octagon House



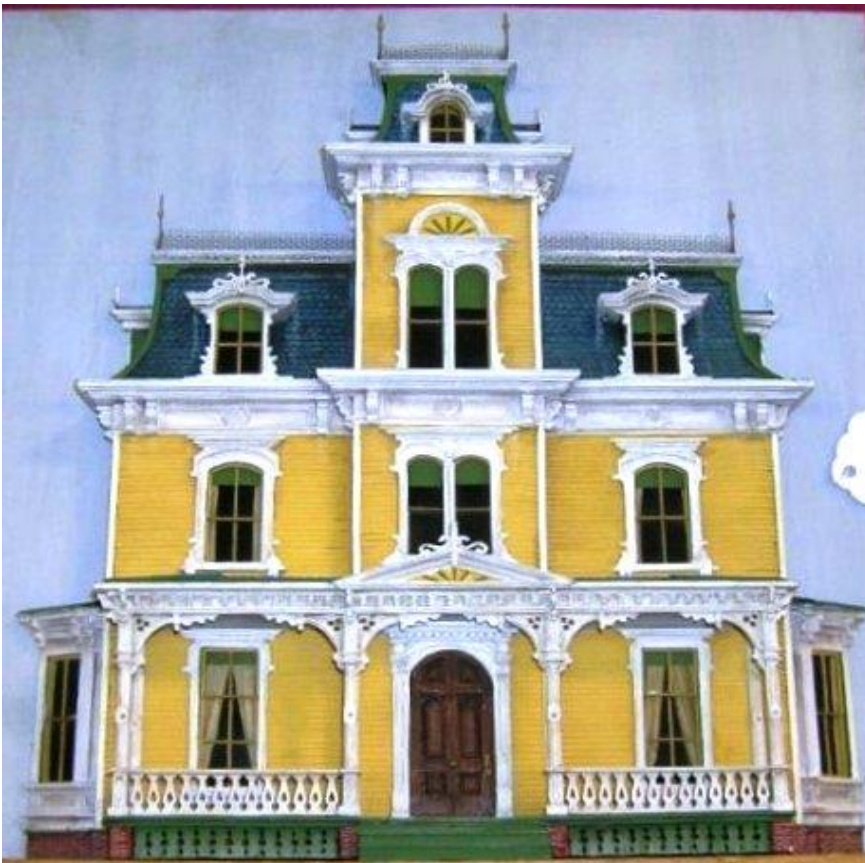


Yellow House On A Hill





Classic Victorian



Model designed, built and painted by Robert Addison for *Classic Victorian*.



And The Children Played



The Carousel



Model created by Robert Addison for *The Carousel*.



Circus Wagons

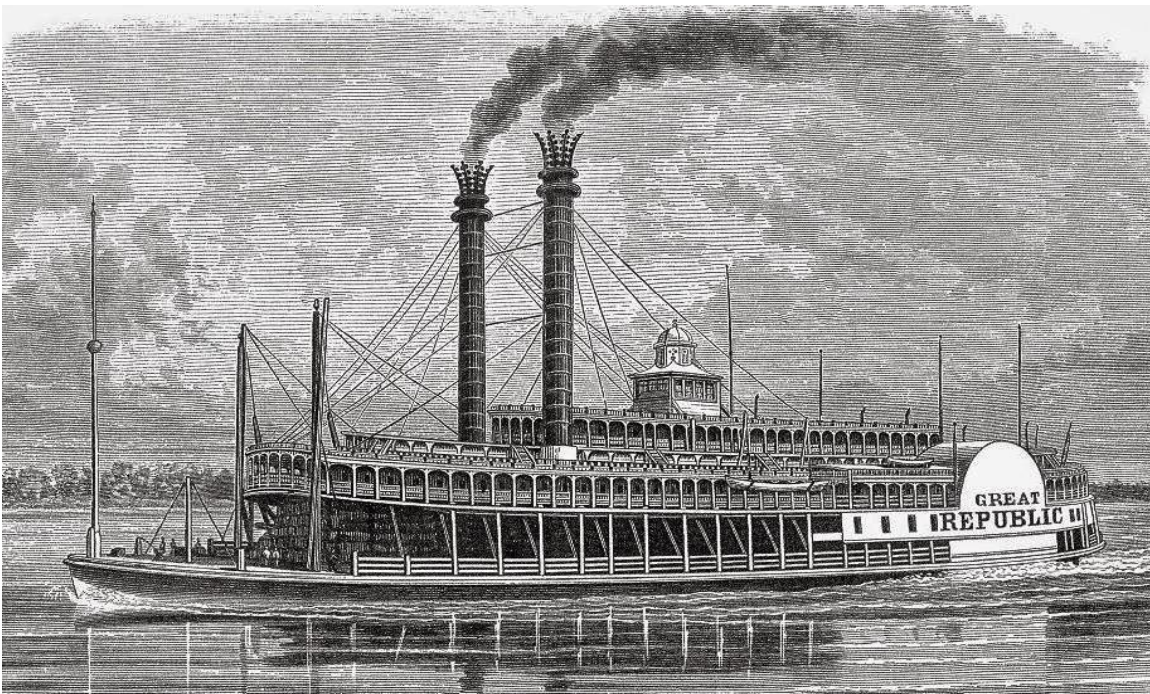


Arthur Brothers Circus

Wagon.



The Great Republic



Great Republic Mississippi steamboat.