

Ultraskin™ Hydrophilic Guidewire

Advanced peripheral navigation technology for complex vascular interventions. Superior torque control meets exceptional radiopacity in challenging anatomies.

 **by Sepehr Fariabi**



Market Positioning Strategy

Premium Performance

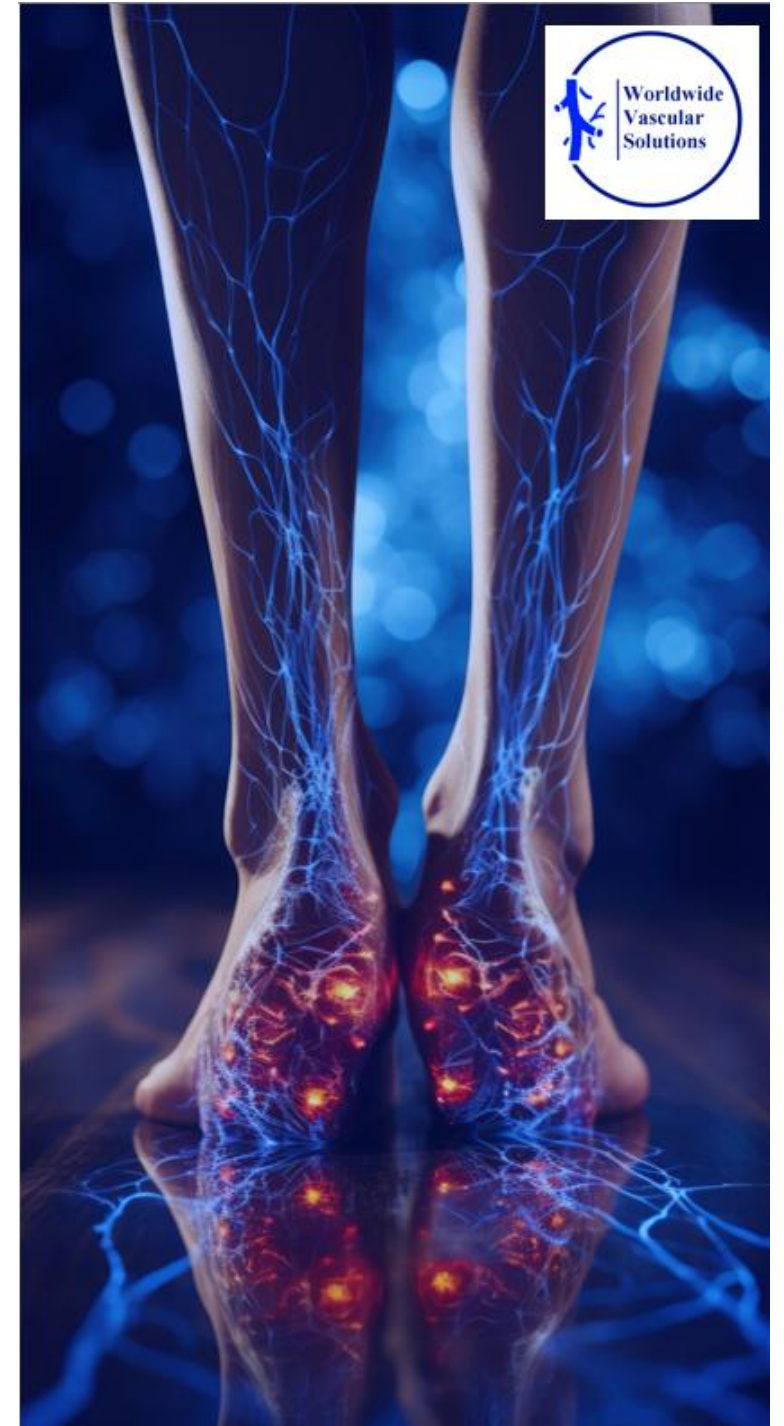
Target interventionalists requiring superior navigation in challenging peripheral cases.

Competitive Advantage

1:1 torque transmission outperforms standard hydrophilic guidewires in complex anatomies.

Clinical Differentiation

Tungsten carbide integration provides enhanced radiopacity versus competing platforms.





Peripheral Guidewire Excellence



Precision Navigation

Engineered for complex peripheral vessel geometries and challenging anatomical variants.



Robust Construction

Nitinol core provides exceptional kink resistance during tortuous vessel navigation.

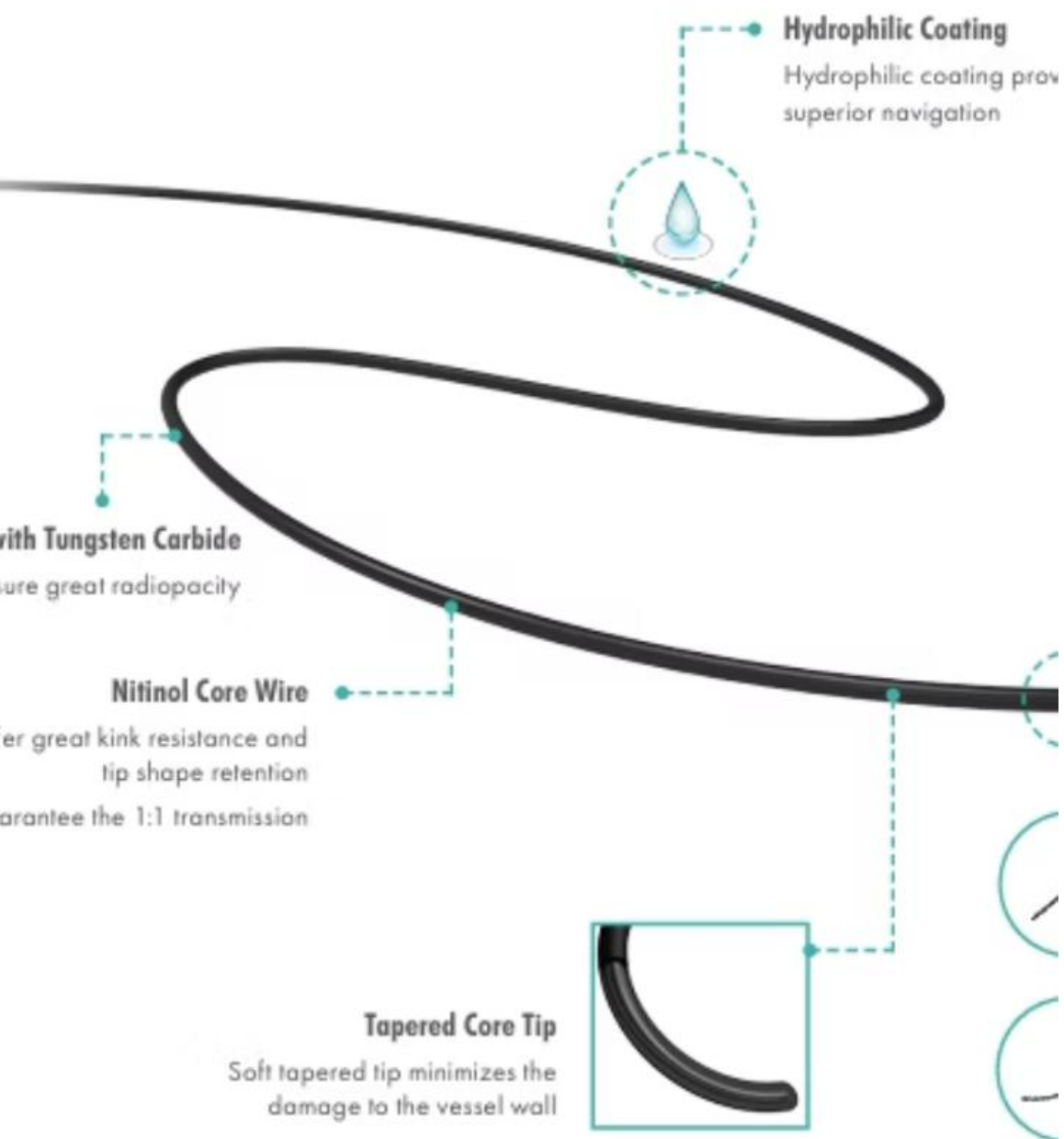


Enhanced Visibility

Radiopaque markers ensure optimal fluoroscopic visualization throughout procedures.

Ultraskin™

Hydrophilic Guide Wire



Technical Specifications

Core Construction

- Nitinol alloy core wire
- 1:1 torque transmission
- Superior shape retention

Jacket Technology

- Polyurethane construction
- Tungsten carbide integration
- Enhanced radiopacity

Tip Design

- Soft tapered configuration
- Multiple curve options
- Trauma reduction geometry

Clinical Applications

1

Large Vessel Access

Optimal for iliac and femoral artery interventions requiring robust support.

2

Mid-Vessel Navigation

Excellent performance in popliteal artery procedures with complex geometries.

3

Distal Vessel Work

Soft tip design enables safe tibial artery navigation.

4

Complex Lesions

Superior torque control for challenging calcified or tortuous segments.



Competitive Advantages

Ultraskin Features

- Tungsten carbide radiopacity
- 1:1 torque transmission
- Superior kink resistance
- Excellent tip retention

Ultraskin delivers enhanced navigation capabilities with superior visibility. Single-use design ensures consistent performance across procedures.

Terumo Glidewire

- Standard hydrophilic coating
- Limited torque control
- Conventional radiopacity
- Basic tip design