

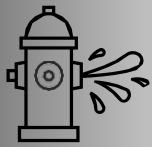


-Thoroughness, Timeliness, and Integrity-

A Team Of Utility Locators, Site Service, and Underground Utility Professionals. Est. 2019

Locating:

- A locator will arrive onsite on the day requested on our online forms. (before the listed date in your locate request form please.)
- The individual will locate for the mobilization rate of 3 hours, after the first 3 hours, the price will be dependent on the rate of \$200 per hour plus the mobilization rate (varies depending on your region).
- For a full day of locating, you will be charged a flat daily rate depending on your region.
- Within 48 hours, you will receive a locate map from PRO GPR in a pdf form via email. (Unless otherwise specified/requested).

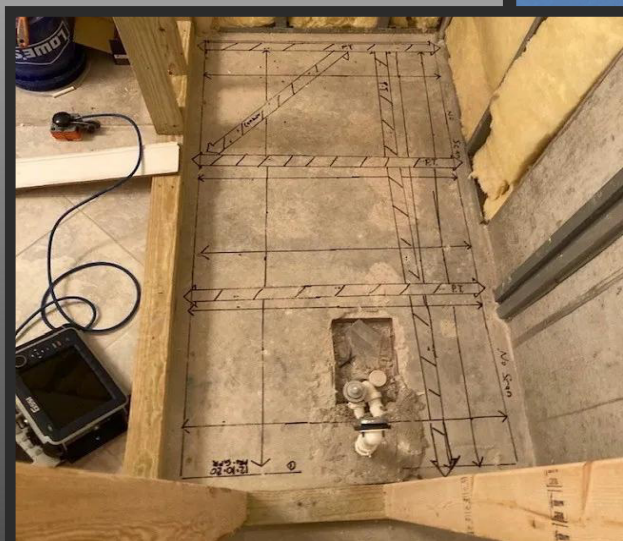




Concrete Scanning:



- Fill out the online form, including a layout of the area and where the desired areas are to be scanned. (This layout can be digitally produced and sent, or hand drawn, scanned, and sent in, if this is the method you use, please be as accurate as possible in your illustration).
- A locator will arrive onsite and give an accurate depiction of the reinforcements and utilities scanned within the concrete.
- - Mobilization fees vary per area (Refer to pricing sheet) after the first 3 hours, customers will be charged \$300 per hour.





Pre-Inspection Services:



- Fill out the online form including how many utilities will be serviced.

(before the listed date in your locate request form please send any existing utility maps to Jmills@progpr.com)

- Also send the utility sheets for the job along with the punch list for your utilities as certain counties have different requirements.



This service includes...



- Valve cap painting and brass tag installation.
- We ensure that the wire has been properly routed into the valve jacket.



- We verify the tracer wire.

- We scribe and paint the curb to identify valves.
- - We paint bollards/hydrants.
- - We install locate balls.



- We procure and install blue reflectors.
- - We paint the tops of meter boxes.



Call or Email for inquiries about our other services.