

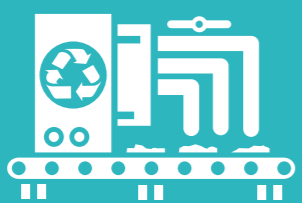


**PLANTERS
IN LIVING COLOURS**



01

Retired Office Equipment



02

Recycling Facility



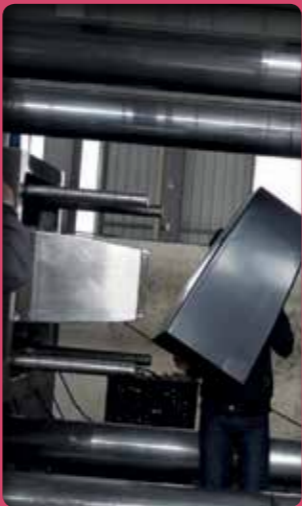
03

Recycled Post-Consumer Plastic



04

Molding and Finishing



Phoenix Vase Ral 9010



Phoenix Round Ral 9007



Phoenix Round Ral 9006



Phoenix Tall Square Ral 7043



Phoenix Square Ral 5012



Phoenix Rectangle Ral 3020



Phoenix Square Ral 6018

The Phoenix Difference

The above images are intended to depict the general trail of materials from source to finished planters and are not intended to show all steps involved in the process. Phoenix contains more than 80% Post-Consumer Material by weight.

Phoenix gives new life to products that have already had a useful life.

Phoenix

- Phoenix Post-Consumer made from products that have already had a useful life.
- Very resistant to scratching because ABS plastic absorbs paint much better than most plastics.
- Casters, Liners and Sub-irrigation are available for key items.
- Sub-irrigation systems have a large reservoir capacity and includes supply of hydroponic substrate.
- All Liners are equipped with a robust centered column.

All colours ship within 5 business days.



Phoenix Rectangle **NEW** Phoenix Round Phoenix Square Phoenix Tall Square Phoenix Tall Vase

Phoenix Models and Dimensions (cm)

Optional Accessories Model Numbers

Rectangle					Caster Platforms	Liners	Hydro Liners	Sub-Irrigation
PHRT-602018	60/20	18						
NEW								
Rounds								
PHC-2017	20	17	19.6	16.8				
PHC-2825	28	25	27.7	24.6				
PHC-3328	33	28	32.3	27.4				
PHC-3833	38	33	37.3	32.5				
PHC-4342	43	42	42.0	38.4	PHCP-2705			NEW SUB-PHC-4342
PHC-5250	52	50	50.1	46.5	PHCP-3105			NEW SUB-PHC-5250
Squares								
PHSQ-1817	18	17	17.0	16.8				
PHSQ-2524	25	24	24.1	23.6				
PHSQ-3231	32	31	30.7	30.2				
PHSQ-4342	43	42	42.0	38.4	PHCP-2705			NEW SUB-PHSQ-4342
PHSQ-5250	52	50	50.1	46.5	PHCP-3105			NEW SUB-PHSQ-5250
Tall Squares								
PHTS-3056	30	56	29.2	55.9		SQHL-2929		NEW SUB-PHTS-3056
PHTS-4176	41	76	39.4	75.4		SQHL-4039	SQHL-4023	NEW SUB-PHTS-4176
PHTS-4991	49	91	47.5	90.4		SQHL-4746		
Tall Vases								
PHTV-3366	33	66	32.5	55.3		RHL-3333		NEW SUB-PHTV-3366
PHTV-4176	41	76	39.4	75.2		RHL-4039	RHL-4023	NEW SUB-PHTV-4176
PHTV-4191	41	91	39.4	90.2		RHL-4039T	RHL-4023T	NEW SUB-PHTV-4176



Phoenix

On this page, we show Phoenix in RAL colour which seems appropriate for these environments. Any RAL colour could have been chosen based on the preference of the client.



AVAILABLE IN ALL RAL COLOURS

Phoenix Tall Vases in RAL 9007

For outdoor and indoor use.

Solo

- Made with environmentally-friendly and durable Eco-Synthetic resin.
- One-piece construction includes top rim of 2.5 cm
- Optional Inside Foam Block converts planter to Hydro-friendly plant installation.
- Special castor platform available with 6 hidden wheels.
- Combine with Phoenix or other Eco-Synthetic shapes in the same colour.

All colours ship within 5 business days.



Solo - Models and Dimensions (cm)

Solo						
SOLO-803043	80/30	43	75/25	25/38	SOCP-682206	SOFB-752513

Optional Accessories Model Numbers

Supremo

- Made with environmentally-friendly and durable Eco-Synthetic resin.
- Designed for large plant installation and long term durability.
- Special strong castor platform available with 5 hidden wheels.
- All products come standard with 2 cm or 3 cm wide top rims.
- Combine with Phoenix or other Eco-Synthetic shapes in the same colour!

All colours ship within 5 business days.



Supremo Square



Supremo Round

Supremo - Models and Dimensions (cm)

Supremo Rounds					
SPRN-6058	60	58	55.9	51.6	SPCP-3508
SPRN-7068	70	68	63.8	59.9	SPCP-3909

Supremo Square					
SPSQ-6058	60	58	55.9	51.6	SPCP-3508
SPSQ-7068	70	68	63.8	59.9	SPCP-3909

Optional Accessories Model Numbers

Solo and Supremo

On this page, we show Solo and Supremo in 2 RAL colours which seem appropriate for these environments. Any RAL colour could have been chosen based on the preference of the client.



Solo in RAL 4005



Supremo Round in RAL 8017 combined with Largo in Ral 6018

For outdoor and indoor use.

Largo

- Made with environmentally-friendly and durable Eco-Synthetic resin.
- The most popular shapes and sizes, including 120 cm length and 150 cm length Largo models.
- Many products come standard with adjustable height shelves and 2,5 to 5 cm wide top rims.
- Combine with Phoenix or other Eco-Synthetic shapes in the same colour!

All colours ship within 5 business days.



Largo



Largo



Largo

Largo Models and Dimensions (cm)

Largo	↔	↑	↔	↑	🛞	Adjustable height shelves
					Caster Platforms	
LG-404075	40	75	30.0	25/40	LGCP-282806	x
LG-4040100	40	100	30.0	25/40	LGCP-282806	x
LG-5050100	50	100	40.0	25/40	LGCP-373707	x
LG-602018	60/20	18	57.7/15.8	17.3		
LG-804075	80/40	75	70/30	25/40	LGCP-672707	x
LG-1204075	120/40	75	110/30	25/40	LGCP-1072707	x
LG-1504075	150/40	75	140/30	25/40	LGCP-1372707	x
LG-212121 NEW	21,5	21,5	18	21,5		
LG-303030 NEW	30	30	25	30		
LG-404040 NEW	40	40	34	40	LGCP-282806	
LG-505050 NEW	50	50	42,5	50	LGCP-373707	
LG-767676 NEW	76	76	71	71	LGCP-686808	(holds 260 kilo)
LG-919191 NEW	91	91	81	84	LGCP-828211	(holds 900 kilo)

Optional Accessories Model Numbers

Cono

Cono Models and Dimensions (cm)

Cono Round	⊘	↑	⊘	↑	Adjustable height shelves
CNR-4375	43	75	33.0	25/40	x
CNR-43130	43	130	33.0	25/40	x
Cono Square	↔	↑	↔	↑	
CNSQ-4075	40	75	30.0	25/40	x



Cono Round



Cono Square

Largo and Cono

On this page, we show Cono and Largo in different RAL colours which seem appropriate for these environments. Any RAL colour could have been chosen based on the preference of the client.



Largo in RAL 4003



Many Largo and Cono come standard with 5 cm top rim.

Largo in RAL 9010



AVAILABLE IN ALL RAL COLOURS

Cono in RAL 5012, 3020, 6018 and 2004

For outdoor and indoor use.

Fjord

- Made with environmentally-friendly and durable Eco-Synthetic resin.
- The most popular shapes and sizes, including a versatile planter 50 cm x 50 cm height.
- Combine with Phoenix or other Eco-Synthetic shapes in the same colour!

All colours ship within 5 business days.



Fjord Oval **NEW**



Fjord Planter



Fjord Vase

Fjord - Models and Dimensions (cm)

		⌀	∩	⌀	∩
	Fjord Vase				
	FDV-46100	46	100	26.3	97.7
	FDV-58125	58	125	33.4	124.0
	Fjord Planter				
	FDP-5050	50	50	30.0	49.5
	Fjord Oval				
	FDO-451921 NEW	45/19	21	41	20

Symmetry

- Made with environmentally-friendly and durable Eco-Synthetic resin.
- Unique tall shape in 3 different heights.
- Removable shelves included!
- Combine with Phoenix or other Eco-Synthetic shapes in same colour!

All colours ship within 5 business days.

Symmetry Models and Dimensions (cm)

		⌀	∩	⌀	∩
	Symmetry				
	CSYTV-3392	33	92	29	30
	CSYTV-46122	46	122	40	40
	CSYTV-54145	54	145	48	48



Symmetry

Fjord and Symmetry

On this page, we show Fjord and Symmetry in different RAL colours which seem appropriate for these environments. Any RAL colour could have been chosen based on the preference of the client.



Symmetry in RAL 4004

AVAILABLE IN ALL RAL COLOURS



Fjord in RAL 8017



Fjord in RAL 9006

For outdoor and indoor use.

Largo Square in Ral 6020 (on casters)



Phoenix Tall Vases in Ral 9005 and Ral 9010



Phoenix Tall Squares in Ral 6003

Ovation

- Made with environmentally-friendly and durable Eco-Synthetic resin.
- Oval shapes for table and floor including tall vases when extra height is needed.
- Combine with Phoenix or other Eco-Synthetic shapes in the same colour!
- Ovation Vases and Wall have removable shelves included.

All colours ship within 5 business days.

Ovation - Models and Dimensions (cm)

						Adjustable height shelves
	Ovation Planter					
OVA-694549		69/45	49	62.7/39.6	48.3	
	Ovation Bowl					
OVAB-342217		34/22	17	29.5/19.6	16.4	
OVAB-503225		50/32	25	43.2/28.5	24.4	
	Ovation Vase					
OVAT-503294		50/32	94	44.2/28.2	30.5	x
OVAT-6945131		69/45	131	61.7/39.6	40.6	x
	Ovation Wall					
OVAW-10050100	NEW	100/50	100	83/43	42	x



Ovation Bowl



Ovation Planter



Ovation Vase

Wave Bowl **NEW**

- Made with environmentally-friendly and durable Eco-Synthetic resin.
- Unique shape, perfect on a desk, table or cabinet.
- Combine with Phoenix or other Eco-Synthetic shapes in the same colour!

All colours ship within 5 business days.

Ovation - Models and Dimensions (cm)

	Wave Bowl				
WB-362717	NEW	36/27	17	31.5/23	14



Wave Bowl

Ovation and Wave Bowl

On this page, we show Ovation and Wave Bowl in different RAL colours which seem appropriate for these environments. Any RAL colour could have been chosen based on the preference of the client.



Ovation Wall combined with Ovation Vase in RAL 3020

AVAILABLE IN ALL RAL COLOURS



Ovation Vase in RAL 6018



Wave Bowl in RAL 9005

Spheres and Earth Bowls

- Made with environmentally-friendly and durable Eco-Synthetic resin.
- Spheres come with built-in planting area and up to 96 cm diameter.
- Earth Bowls come in 5 different sizes, from table-size to very large.
- Combine with Phoenix or other Eco-Synthetic shapes in the same colour!

All colours ship within 5 business days.



Sphere

Earth Bowl

Spheres and Earth Bowls Models and Dimensions (cm)

	⊘	⊙	⊘	⊙
Sphere Planters				
SPH-5748	57	48	30.0	30.0
SPH-7865	78	65	40.6	40.6
SPH-9680	96	80	50.3	50.3
Earth Bowls				
EBL-3615	36	15	32.8	14.2
EBL-4619	46	19	42.2	18.5
EBL-6126	61	26	56.1	24.9
EBL-7632	76	32	70.1	31.2
EBL-9138	91	38	84.1	37.6

Spheres and Earth Bowls

On this page, we show Spheres and Earth Bowls in different RAL colours which seem appropriate for these environments. Any RAL colour could have been chosen based on the preference of the client.



Spheres
RAL 9010



Earth Bowl RAL 1018



Sphere
RAL 7030

For outdoor and indoor use.

Plant Portrait

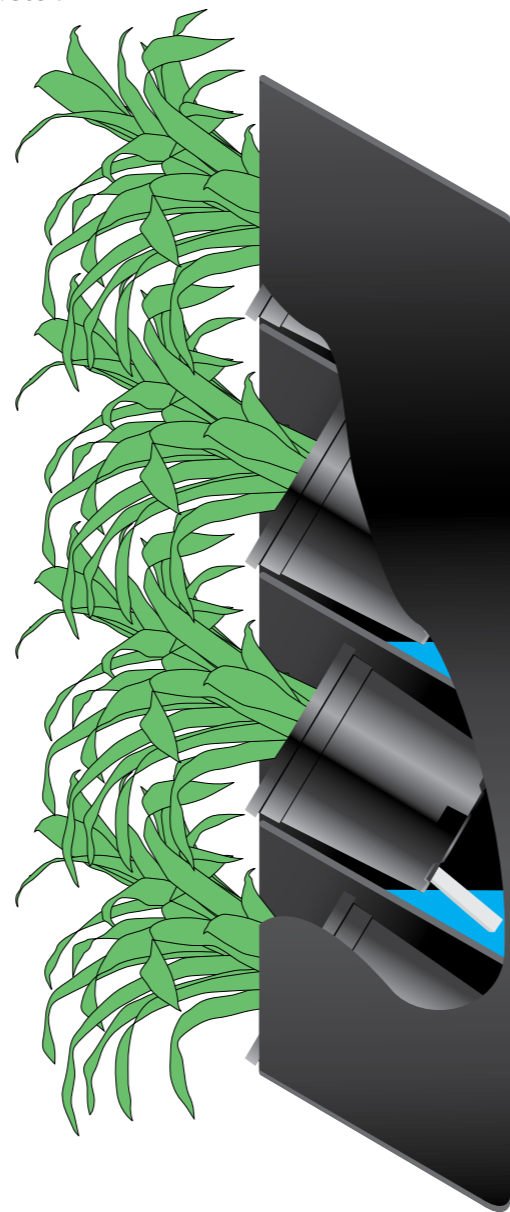
- Proven system, one of the most used Plant Portrait Systems in the USA.
- Easy to install and simple to use.
- Many combinations and designs possible.
- Plant replacements are fast and easy.
- Each Plant Portrait contains 4 shelves.
- Simply add wicked plants to each shelf and fill each shelf with water.
- Frame can be painted in any Ral colour.
- Made with environmentally-friendly and durable Eco-resin.

All colours ship within 5 business days.

Wicks from Nature's Green

Wicks have long been a successful method for extending watering cycles in commercial environments.

By applying wick technology to a tilted grow pot, watering cycles of 10 days to 3 weeks or more can be achieved. Simply add the specified amount of water to each tray and allow the wicks to draw water into the grow pots. Nature's Green has sturdy Caponic wicks in stock at all times.

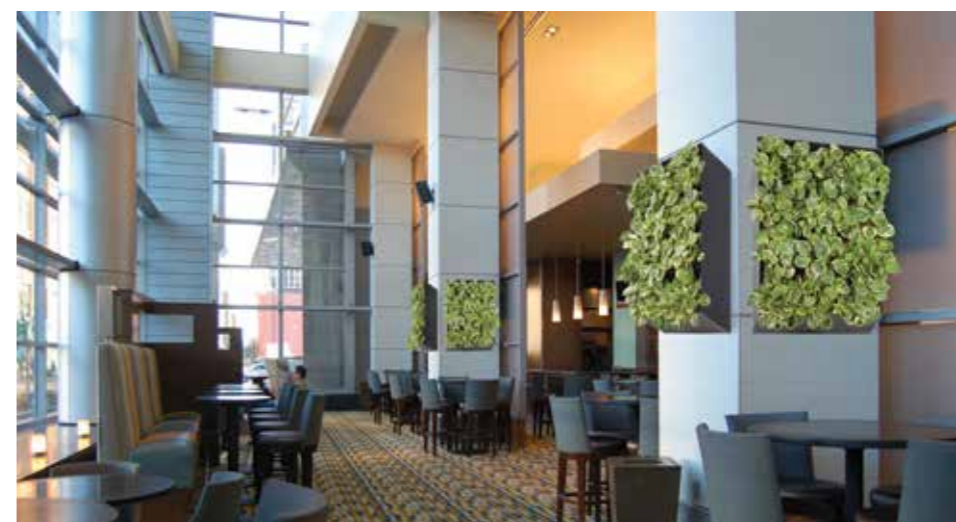


PW (Plant Wick) HS-1312 (Hydroscreen 13 x 12 cm) SPS (Space saver)

Plant Portrait Models and Dimensions (cm)

Plant Portrait	←	↑	↘	Number of shelves	Total amount of water	Approximate weight. fully planted/ watered (kg)	Approximate coverage when planted (m ²)	Distance (cm) coming off wall	
								Unplanted	Planted
PP-4080	40	80	92	4	1/1.25 liter	18-20 kg	0.4 m ²	21.6	30-60
PP-6080	60	80	92	4	1.4/1.7 liter	27-29 kg	0.55 m ²	21.6	30-60
PP-8080	80	80	92	4	1.7/2.1 liter	36-38 kg	0.75 m ²	21.6	30-60

Plant Portrait



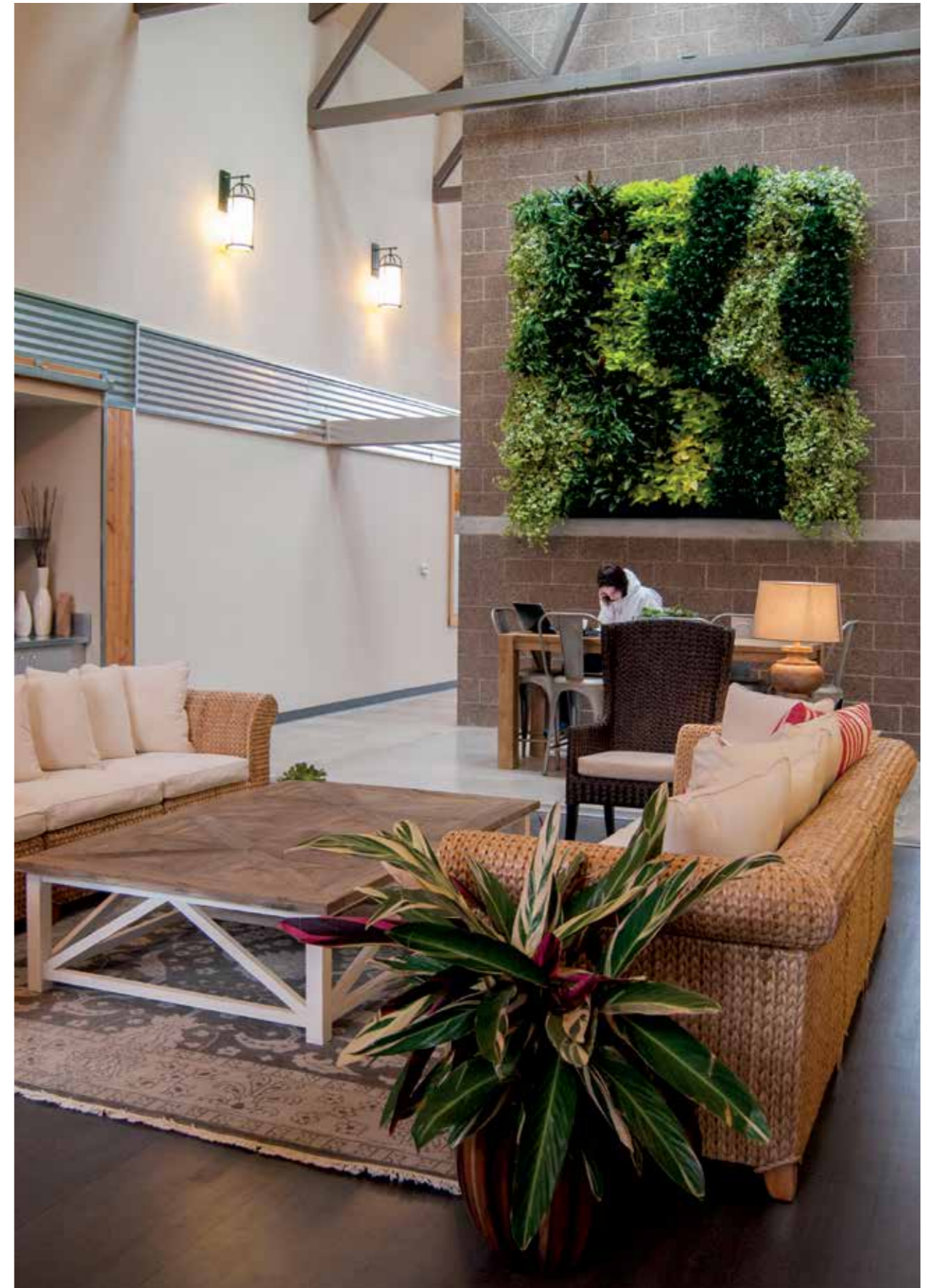
AVAILABLE IN ALL RAL COLOURS

For indoor use.



DETAILED
BROCHURE AND
MANUAL ARE
AVAILABLE

NextGen Living Walls



Works with Hydro or Soil plants in their original grow pots.



The easiest to maintain.



The easiest to install.



4 week watering cycle.



The easiest to plant and change.



Optional LED Lighting System.



Handy tool to calculate NextGen Living Walls.
Nature's Green developed a handy tool to calculate costs and space for NextGen Living Walls in seconds. You can access to this tool via our imagedatabase on www.naturesgreen.nl

Solid Bamboo

- Bamboo is one of the fastest growing plants on Earth and is a Rapidly Renewable Material.
- It is good for the environment to make products from bamboo instead of fossil fuels.
- Our Solid Bamboo planters are a one-of-a-kind product.
- Naturally Beautiful, Strong and Environmentally-Friendly.

Solid Bamboo - Models and Dimensions (cm)



Solid Bamboo Squares

	☐	⊥	☐	⊥
SBSQ-2320	23	20	19.0	18.3
SBSQ-4741	47	41	42.7	39.1
SBSQ-5751	57	51	52.8	49.3

AS LONG AS INVENTORY LASTS



Solid Bamboo

Nature's Green River Rock

- Light-weight polyrock creates a whole new kind of top dressing for planters and plants.
- Looks and feels real in every way except the weight.
- Available in 3 elegant colours: Black Pearl, White Pearl, Silver Vein

Models

RR-15-BP	3 kilograms of Black Pearl River Rock
RR-15-WP	3 kilograms of White Pearl River Rock
RR-15-SV	3 kilograms of Silver Vein River Rock



Black Pearl



Silver Vein



White Pearl

AS LONG AS INVENTORY LASTS

Flexible Liners

- Fit round and square shapes.
- 7 Sizes Fit all Nature's Green products.
- Manufactured in Black for neutral appearance.

Flexible Liners Models and Dimensions (cm)

Flexible Liners

	⊘	⊥
LN-2014	20	14
LN-2820	28	20
LN-3425	34	25
LN-4028	40	28
LN-4732	47	32
LN-5540	55	40
LN-6548	65	48



Water machine 95 liters

- Filling; 4-5 min.
- Empty: 39 Kilos
- Full: 134 Kilos
- Water Hose: 4 meters
- Wheels: 2 x 25 cm
- Casters: 2 x 10 cm
- Comes with Sink Adapter

Features

- A. Deluxe Wand
- B. 12,5 Liters Trash Bag
- C. Storage Box
- D. Water Wand Hook
- E. Handle with Loading Wheels
- F. Rubber Hand Grips
- G. Nylon Tank Cover
- H. Loading Metal Handle



Welcome

Our team is thrilled to inform you about all products and benefits of our company. Our philosophy is that you, our customer is the one that counts the most. We will provide you with the best performance and with a very complete line of products that will help your business.

Robert van Aerts,
Managing Director

EUROPE HEADQUARTERS VENLO

Venlo is the Gateway to Europe for The Netherlands and therefore a perfect location for a manufacturer of planters. Nature's Green is located in a spacious and beautiful facility in the Tradeport West area of Venlo.

Being a logistics hub, Venlo provides Nature's Green the ability to efficiently receive and ship our products and materials.



Nature's Green

Nature's Green was created to help protect the environment by offering environmentally friendly products. It is also our mission to make the environment in which our customers work and live as beautiful as possible, with all colors of nature at our disposal.

We design, manufacture and paint all our own products and in this way we keep quality as high as possible, prices as low as possible and delivery time as fast as possible.



MORE THAN 20.000 PLANTERS IN STOCK

Biggest asset Nature's Green: Its huge warehouse, where more than 20.000 planters and accessories are ready to ship all over Europe and the Middle-East.



Nature's Green strategy:



We: Design



Mould



Paint



Store



Ship

RAL COLOURS PRICING *

You can choose any RAL colour you desire in high shine (hs) or matte (m) for the same low price. Many Pantone colours are also available.

*Except luminous and pearl colours

SHIPPING

We ship out of our factory within 5 business days after your order is placed.

ONE DAY SHIPPING

Many popular shapes and colours available for next day shipping. Inquire with our sales department.

MOST POPULAR RAL COLOURS

The following RAL colours are the most popular in both high shine and matte:



1015
Light ivory



2004
Pure orange



3020
Traffic red



5012
Light blue



6018
Yellow green



7043
Traffic grey



8017
Chocolate brown



9005
Jet black



9006
White aluminium



9007
Grey aluminium



9010
Pure white



Taupe
Taupe



The printed colours may vary from the original Ral-colours.



SERVICING THE LANDSCAPE INDUSTRY

A B Terratec Ltd

Units 2 & 2A

Phoebe Lane Industrial Estate, Halifax, West Yorkshire, United Kingdom

Telephone: +44 (0) 1422354469,

Email: sales@plantpots.co.uk, www.plantpots.co.uk



Nature's Green B.V.

Jan van Riebeeckweg 15, 5928 LG Venlo, The Netherlands, Tradeport West 9205

Phone: +31-77-3030420

Email: info@naturesgreen.nl, www.naturesgreen.nl

