

ROKRETE PU-MF

4-comp. PU screed, trowel applied 3-4 mm, solvent-free, coloured.

ROKRETE PU-MF is used in situations subject to constant exposure to aggressive chemicals, high heat cleaning and mechanical abuses such as dairy, food & beverage production facilities, warehouse and distribution centers, chemical and minerals processing plants and waste treatment plants.

TECHNICAL DATA	
COMPRESSIVE STRENGTH	
EN 13892-2	>50 N/mm ²
ADHESIVE STRENGTH	
EN ISO 4624	>1.5 N/mm ²
SHORE HARDNESS	
EN ISO 868	D 75 to 80 after 30 days
HEAT RESISTANCE	
5°C to +70°C (3mm); -15 to +90°C (4mm).	
IMPACT RESISTANCE	
EN ISO 6272	≥ 15 Nm
FLEXURAL STRENGTH	
EN 13892-2	>20 N/mm ²
TENSILE STRENGTH	
EN 196 / ASTM C109	>10 N/mm ²
FIRE RESISTANCE	
EN 13501-1 (PART 1)	B _{f1} – s1
SLIP RESISTANCE	
BS 7976-2 (4-S rubber slider)	Dry>38



HIGH CHEMICAL RESISTANT

resists organic acids, dilute mineral acids, vegetable and animal fats, petroleum oils and solvents.



WIDE SERVICE TEMPERATURE

5°C to +70°C (3mm); -15 to +90°C (4mm).



HIGH ABRASION / IMPACT RESISTANT

resists mechanical wear and heavy vehicular traffic.



SEAMLESS

Easy to keep clean and maintain.



FAST CURING

Can withstand foot traffic in 12 to 20 hours after application.



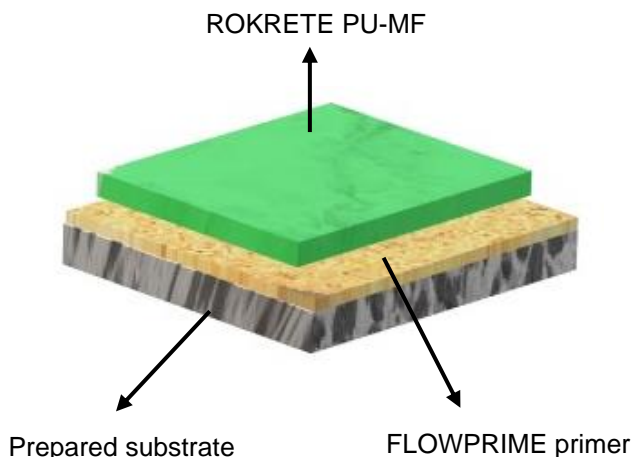
ANTI-MICROBIAL

Reduce bacteria by 99.9 %.



SOLVENT FREE

Nonflammable, non-tainting to food, no fire hazard.



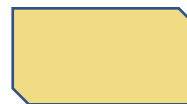
Green



Buff



Red Oxide



Cream



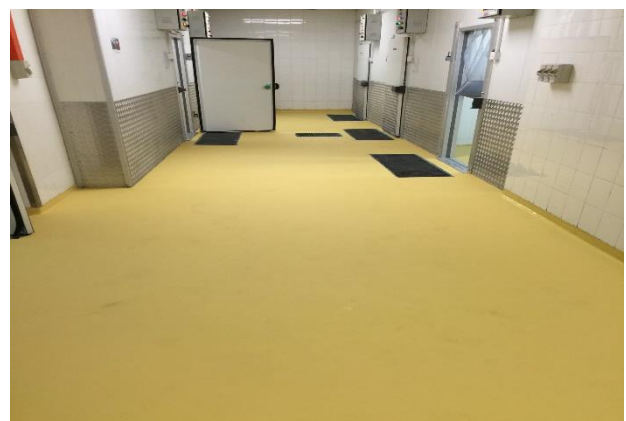
Grey



Light Grey

**The applied colours may differ from the examples shown above.

TECHNICAL DATA		
Density	at 25 °C	1.89 g/cm ³
Packaging size	total 4 components A : B : C : Color Paste	20.175 kg (3 : 3 : 14 : 0.175) kg
Mixing ratio (in parts by weight)	A : B : C : Color Paste	3 : 3 : 14 : 0.175
Working time	at 15 °C at 25 °C	27 – 30 minutes 20 – 24 minutes
Application temperature	min 3 °C above dew point	10 – 30 °C
Material consumption (PU Mortar)	per mm for 3-4 mm	1.9 kg/m ² 5.7 – 7.6 kg/m ²
Overcoating	at 25 °C	12 – 24 hours
Cure time to withstand	at 25 °C : light traffic : heavy traffic : full chemical curing	12 – 20 hours 36 – 48 hours 7 days
Storage	Store at dry conditions, 10 - 30 °C, avoid direct sunlight	
Shelf life	9 months in unopened container	



APPLICATION METHOD

1. Substrate Preparation

Concrete substrate should be clean and dry with compressive strength of 25 MPa and have a minimum tensile strength of 1.5 MPa.

New concrete need to be cured for at least of 28 days.

Repair holes and cracks etc with **FLORPRIME 110**. Ensure proper grading and levelling where required.

Prepare concrete surface by diamond grinding or shot blasting to ensure good surface profile for mechanical interlocking by removing surface laitance, coating and all loose materials

Prepare grooves of 3 mm width and 5 mm depth minimum inside all edges of the area plus around drains, columns etc where **ROKRETE PU-MF** will be applied.

2. Primer

Apply an epoxy primer such as **FLORPRIME 500** or **ROKRETE PU-MF scratch coat** of 1mm thickness by roller or trowel to the surface that has been grinded. If the surface is poor or porous, a second coat of primer may be required. To improve inter-layer adhesion, sprinkle 0.2-0.5 mm quartz sand lightly (approx. 600 g/m²) while the primer is still wet. If two coats of primer are necessary, this should be done on the second coat.

3. Application

The material temperature must be close to the site conditions before starting the application.

Firstly, add the colour paste into component A. Mix to disperse the colour paste (1 minute) until homogeneous using a helical mixer at a speed of 300-600 rpm. Add component B and mix (1.5 to 2 minutes) until homogeneous.

Add component C slowly to the mix while the mixer is running. Move the mixer from side to side and top to bottom and remember to scrap the sides of the mixing vessel to ensure good mixing (2 – 3 minutes).

Pour the mixture to a new clean container and mix for another 1 minute.

Pour the mix on to the prepared floor and spread over the floor area at the required thickness using a pin rake or notched trowel.

Make sure to maintain continuity of wet material between pours (max. 5 – 6 minutes). Apply by appropriate power float or by hand troweling.

4. Overcoating

Overcoating must be done within 24 hours after application of **ROKRETE PU-MF**. If longer than 24 hours, it is required to lightly grind the surface before over-coating.

5. Care and Maintenance

We recommend that floor is clean regularly with a mildly alkaline based cleaning detergent with the use of a rotary scrubber.

FLORTECH SDN BHD,
8, Jalan Selat Selatan 24, Phone: +60-331631884
Sobena Industrial Estate, Email: flortech.my@gmail.com
42000. Pandamaran, Port
Klang., Selangor,
Malaysia

All information contained herein is true, accurate and represents our best knowledge and experience. Warranty is not given or implied with any recommendations made by us, our applicators or distributors, as the conditions of use at the site and the professional competence or skills involved in the application of the product are not within our control.

As all FLORTECH data sheets are updated on a regular basis, it is user's responsibility to obtain the most recent issue. Hard copies are available upon request.