



AERO LOGISTICS

✓ Precision Cold-Chain Logistics
Transportation - Warehousing - Fulfillment - Distribution

Pharmaceuticals & Life Sciences

- ❖ Asset-Based Service Provider
- ❖ Good Distribution Practices Compliant
- ❖ Risk Mitigation Logistics Platform
- ❖ Temperature-Controlled Infrastructure
- ❖ Technology Driven Supply Chain Visibility



AERO's Structure

AERO Logistics is an asset-based GDP Compliant service provider that specializes in cold-chain logistics. We focus on the safe, compliant, and controlled movement of pharmaceutical and life-science products.

AERO operates at the intersection of **temperature-controlled logistics, regulatory compliance, and operational risk mitigation**, delivering highly controlled transportation, warehousing, and distribution solutions for sensitive healthcare cargo.

AERO was designed from the ground up to solve the **unique risk challenges pharmaceutical manufacturers face when moving regulated, temperature-sensitive products through complex global supply chains.**



Redefining Cold-Chain Excellence

PHARMACEUTICAL LOGISTICS



TRANSPORTATION
Temperature-controlled transportation ensuring product integrity every step of the way



WAREHOUSING
GDP-compliant storage with controlled temperature and 24/7 monitoring



INVENTORY MANAGEMENT
Real-time visibility, lot tracking, and expiration control



CUSTOMER SERVICE
Dedicated support team providing responsive, reliable, and expert service



OFF-SITE MANUFACTURING SUPPORT
Reliable handling and coordination with manufacturing partners to ensure seamless supply continuity



DISTRIBUTION
Efficient, compliant distribution delivering life-saving products where and when they're needed

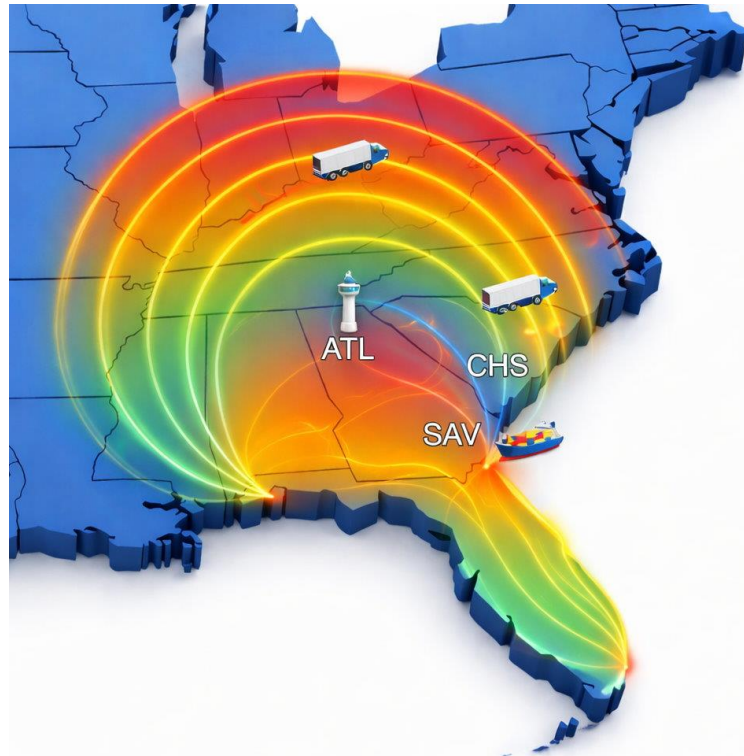
Locations and Service Area

Our highly secured temperature-controlled facilities are strategically located in:

Atlanta, GA servicing the ATL Hartsfield-Jackson International Airport

Charleston, SC servicing the port of Charleston and the port of Savannah

Our delivery area is roughly a 700-mile radius of our locations.



Failure Is Not An Option

Pharmaceutical logistics failures cannot simply be replaced or written off. A compromised shipment can impact **patient health, regulatory standing, and millions of dollars in product value.**

Most traditional logistics providers were not built to handle these risks. They attempt to adapt general freight networks to pharmaceutical cargo rather than designing purpose-built systems specifically for regulated healthcare supply chains. This is where AERO Logistics differentiates itself.

FAILURE IS NOT AN OPTION.

IT CAN **COST** YOUR COMPANY. IT CAN **DAMAGE** YOUR REPUTATION.

IT CAN COST YOUR COMPANY.
Lost revenue, penalties, and increased expenses.

IT CAN DAMAGE YOUR REPUTATION.
Loss of trust, negative reviews, and damaged credibility.

IT CAN IMPACT EVERYONE.
Your team, your customers, and your future.

WE DO IT RIGHT. WE DO IT SAFE. WE PROTECT OUR COMPANY. OUR CUSTOMERS. OUR FUTURE. THERE IS NO OPTION TO FAIL.



Our Operational Philosophy

Protect the product, maintain the efficacy of the product, protect the patient, safeguard our customer while eliminating supply chain risk. This philosophy drives every aspect of AERO's infrastructure, compliance framework, technology stack, and operational model.



REFRIGERATED TRANSPORTATION SERVICES

AERO Logistics is an asset-based carrier supported by a modern well-maintained fleet of temperature-controlled equipment. Our refrigerated assets includes Tractor-Trailers, Straight Trucks, Sprinters Vans, & **Chassis with Genset**.

We provide a wide variety of temperature-controlled transportation services for *small parcels up to full truckloads*:

- Airport Recoveries
- Local & Regional Deliveries
- Expedite Shipments
- High Value Cargo



- Shuttles & Transfers Services
- Dedicated/Contract Transportation Service
- Drayage for regional ocean ports CHS & SAV
- Drayage local railyards CSX & NS



- ✓ TSA Approved Drivers
- ✓ US Customs Bonded Carrier



TEMPERATURE-CONTROLLED WAREHOUSING & DISTRIBUTION SERVICES

Our highly secure GDP Compliant temperature-controlled facilities supports temperature ranges from **2 to 8 C & 15 to 25C**. We offer a wide range of warehousing/distributions services supported by a dedicated team & the latest WMS and temperature monitoring technology that provides a customizable suite of services with access to inventory/activity via the customer online portal.

- Long-Term Storage
- Short-Term Storage
- Cross-Dock
- Distribution Services
- PMC Build-Up & Breakdown
- Container Devanning
- Fulfillment
- Manufacturing Support
- Special Projects
- Product Destruction Services

Additional Services includes:

- ❖ Storage, Charging, Pre-Conditioning, & Re-Icing of Active Temperature-Controlled Containers
- ❖ Build out and conditioning of Passive Temperature Sensitive Packaging



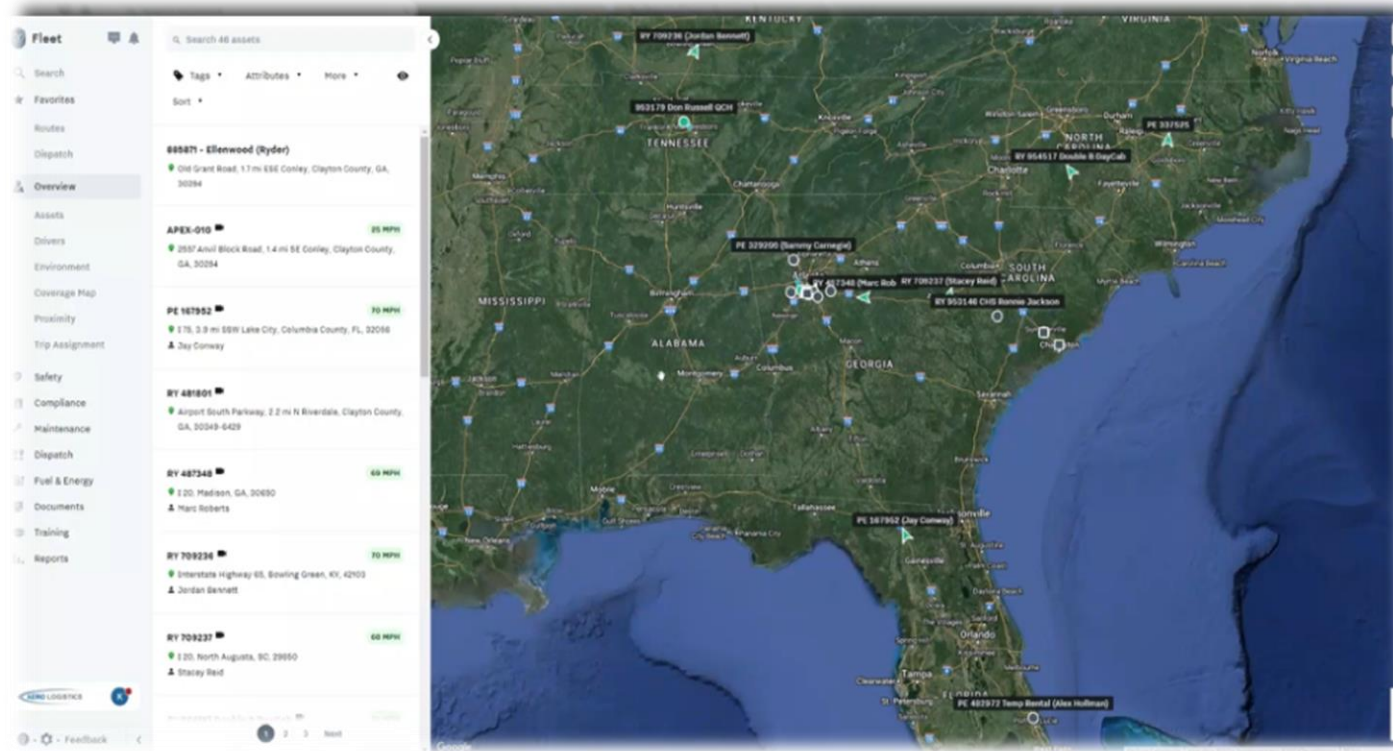
- ❖ **Container Freight Station – Certified Cargo Screening Facility – FDA Approved Inspection Station**
- ✓ Warehouse operations are supported by a robust WMS & Cargo Management system
- ✓ Real-time 24/7 temperature monitoring/regulating system
- ✓ Facility is equipped with natural gas emergency back-up generator.



REFRIGERATED ASSET MANAGEMENT TECHNOLOGY

Utilizing the latest GPS & asset management technology we deliver real-time end-to-end visibility of your cargo to ensure the safety, security and efficacy of your product. Real-time route monitoring, Multiple GPS tracking devices, two separate independent temperature monitoring devices. & more..

- Power Unit GPS Tracking x 3
- Real-Time Trailer Temperature Monitoring x 2
- Deviation Alert
- Fuel Reading & Low Fuel Alert
- Regulate Temperature
- Power Unit On and Off
- Pre-Cool Trailer
- Geo-Fences



TECHNOLOGY

At AERO Logistics, we have made significant investments in advanced technology to enhance the customer experience and ensure complete visibility, control, and confidence when handling high-value, temperature-sensitive cargo.

Our integrated technology ecosystem includes a robust Warehouse Management System, advanced cargo management platforms, and state-of-the-art temperature monitoring and regulatory controls. These systems work together to provide real-time, precise operational data, proactive alerts, and full transparency across every stage of the supply chain.



This enables our customers to access accurate shipment status, environmental conditions, and compliance documentation instantly — helping reduce risk, improve decision-making, and protect the integrity of critical pharmaceutical and life-science products.

Simply put, our technology investment ensures your cargo is not only handled safely — it is continuously monitored, intelligently managed, and fully visible from arrival to final delivery

Governmental / Regulatory Oversight

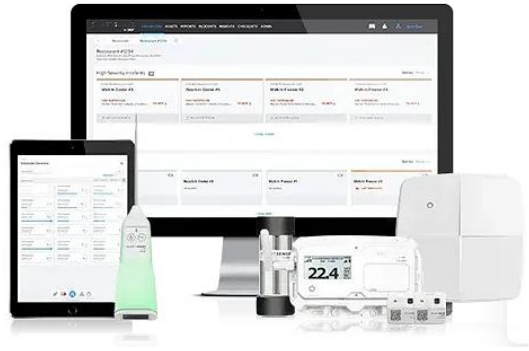


COMPLIANT



COMPLIANT

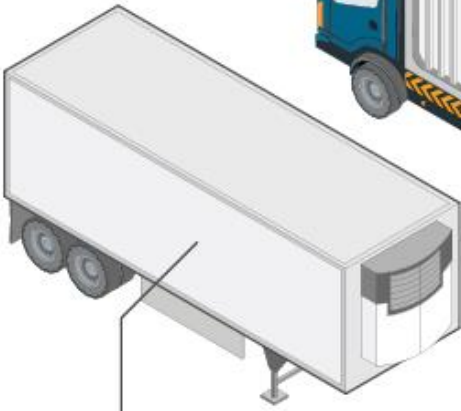
End-to-End Critical Asset and Product Protection



Manage all locations from a single solution.



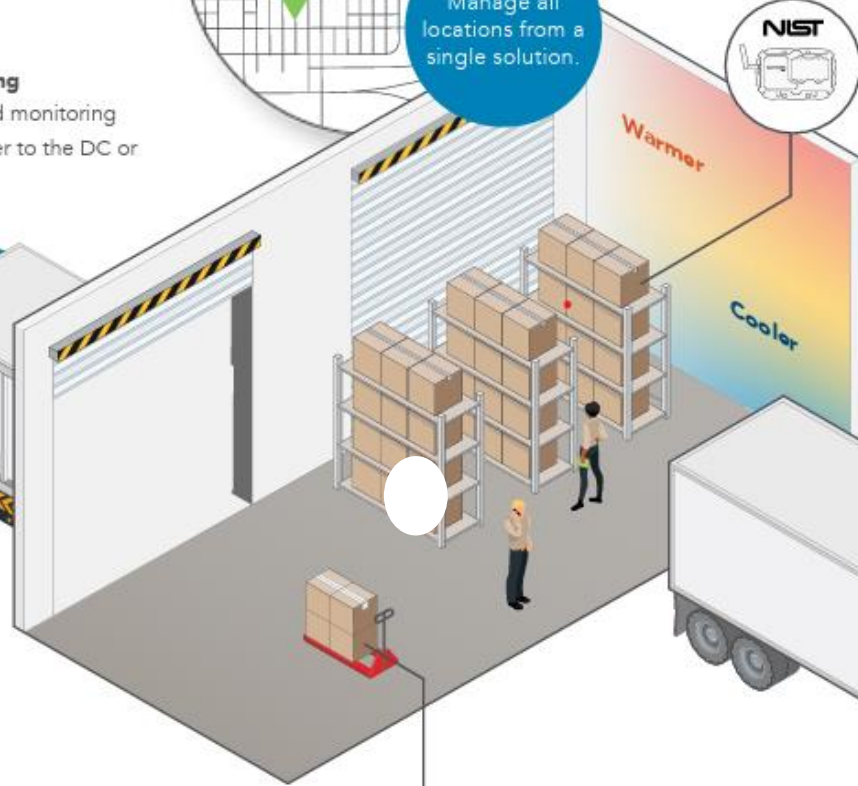
Supply Chain Tracking
Maintain visibility and monitoring from the manufacturer to the DC or warehouse.



Overflow Storage
Monitor overflow storage as if it were stored on-site in your store or warehouse.



Cargo Theft Prevention
Reduce theft with discreet, real-time, product-level location monitoring and tampering alarms.



Cellular Gateway
Cellular network agnostic and uses the strongest signal. Removes IT complexity.



Ambient Zones
Protect over-the-counter products from unsafe temperature and humidity levels.



Track store shipments
Track location and condition of product to prevent temperature excursions.





MISSION STATEMENT & OUR PROMISE

AERO Logistics will always strive daily to exceed our customers' expectations with superior service and unrivaled customer support. We're committed to developing long-term business partnerships that fosters respect, collaboration, growth, and promotes corporate synergies.

Call today and allow us to EXCEED YOUR EXPECTATIONS.



561 Airport South Parkway - Atlanta, GA 30349 / 115 Horton Road – Summerville SC 29483
Main Office: 404-264-5505 / info@aerologistics.net / www.aerologistics.net