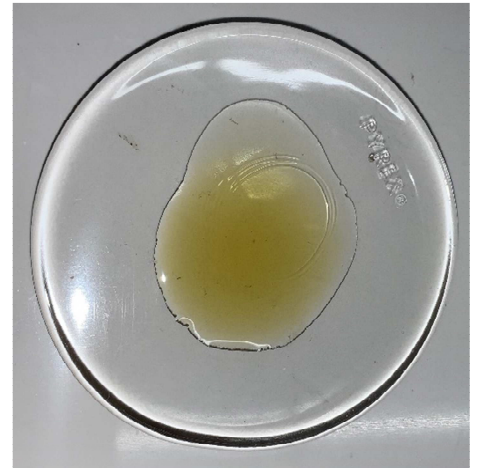


PRODUCT INFORMATION

Product: Hemp Derived Whole Plant Concentrate
Description: 500 mg Total CBD in 1 FL OZ in Organic Hemp Seed Oil
Batch ID: W1807100X16
Mfg Date: 25-Nov-19
Product Code: W16HV-30
Production ID: VS1932901
Biomass Source: Vermont, USA
Cultivar: Blend



Product of Vermont USA

PRODUCT DATA

Parameter	Test Procedure	Specification	Units	Result
Appearance (20 - 25°C)	ASTM E1627 - 11	Dark Amber, viscous liquid	-	PASS
Odor (20 - 25°C)	ASTM E1627 - 11	Floral, earthy	-	PASS
Total CBD (Potency)	C5210-LCUV (Internal)	500 - 560	mg/mL	513 PASS
CBDA	C5210-LCUV (Internal)	≤ 10	%w/w	< 0.05 PASS
Delta 9-THC	C5210-LCUV (Internal)	≤ 0.34	%w/w	0.09 PASS
THCA-A	C5210-LCUV (Internal)	≤ 0.05	%w/w	< 0.05 PASS
Minor Cannabinoids	C6198 LCMSMS (Internal)	≥ 0.01	%w/w	0.03 PASS
Terpenes	C5933-GCMS (Internal)	≥ 100	ppm	220 PASS
Residual Solvent	C5923-GCMS (Internal)	USP 467**	ppm	PASS
Microbiological Screen*	MCR-TM-00006 (External)	MDH Exhibit 6	-	PASS
Heavy Metals	MCR-TM-00006 (External)	MDH Exhibit 4	ppb	PASS
Pesticides*	MCR-TM-00009 (External)	MDH Exhibit 5	ppb	PASS
Mycotoxins*	MCR-TM-00013 (External)	MDH Exhibit 6	ppb	PASS

*Results based on source whole plant concentrate prior to distillation

**Class I & II solvents methanol, pentane, ethanol, acetone, 2-propanol, acetonitrile, n-hexane, tetrahydrofuran, chloroform, n-heptane, toluene, xylene (m,p).

***Specification limits are set based on internal process monitoring and represent expected levels depending on the type of material described in this document.

****MDH - Massachusetts Department of Health

PRODUCT STABILITY

Recommended Storage: 20-25 ° C (68-77° F), Refrigerate for long term storage (> 3 months).

Retest Date: 1-Dec-21 Avoid exposure to extreme hot or cold and protect from exposure to light.

IMPORTANT: Some data for this product are collected using NEP internal analytical testing procedures undergoing validation. Testing results will vary within reasonable procedure performance limits. Results demonstrating regulatory compliance are provided by NEP are for directional purposes in support of manufacturing processes and are not a substitute for 3rd party lab testing of this material. External testing denoted by "(External)" in procedure field is performed by MCR Labs (Framingham, MA USA); reports available upon request.

Approved by:



Date: 6-Dec-19

Name: Keith Griswold, M.S.

Title: Director of Analytics & Formulations

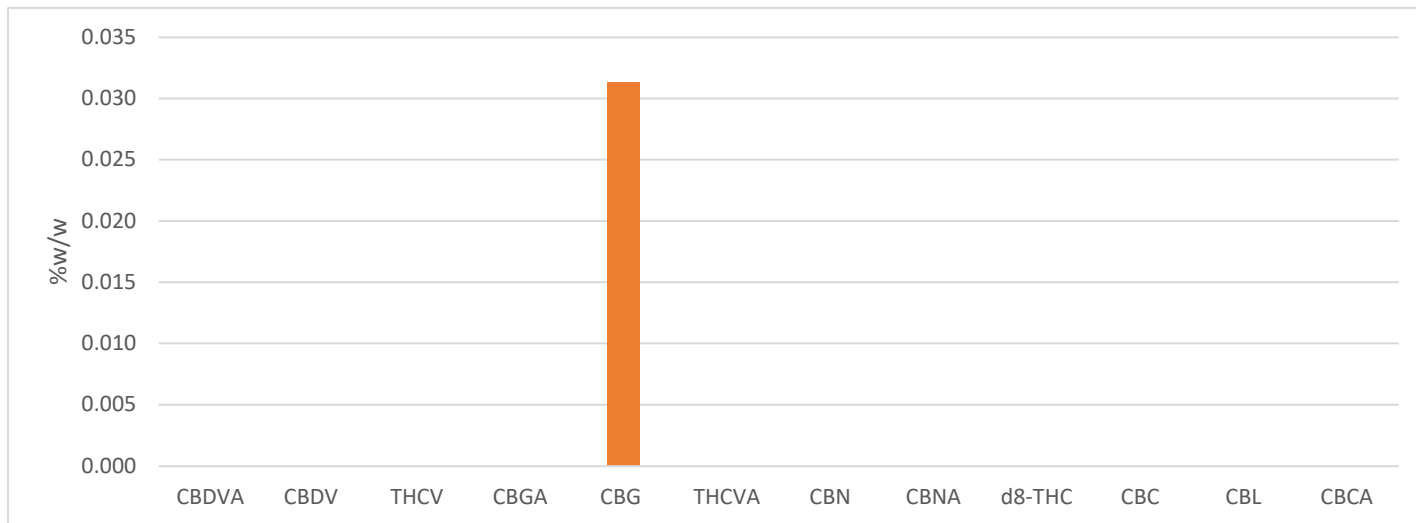
Certificate of Analysis

Minor Cannabinoids

Product: Hemp Derived Whole Plant Concentrate
Procedure ID: C6198 LCMSMS (Internal)

Product Batch ID: Vermont, USA

Total Minor Cannabinoids: **0.03** %w/w



Analyte	Reporting Limit	%W/W	MG/G
Cannabidivarinic Acid (CBDVA)	0.01 % w/w	Non Detect	-
Cannabidivarin (CBDV)	0.01 % w/w	< 0.01	-
Tetrahydrocannabivarin (THCV)	0.01 % w/w	Non Detect	-
Cannabigerolic Acid (CBGA)	0.01 % w/w	Non Detect	-
Cannabigerol (CBG)	0.01 % w/w	0.031	0.31
Tetrahydrocannabivarinic Acid (THCVA)	0.01 % w/w	Non Detect	-
Cannabinol (CBN)	0.01 % w/w	Non Detect	-
Cannabinolic Acid (CBNA)	0.01 % w/w	Non Detect	-
Delta 8-THC	0.01 % w/w	Non Detect	-
Cannabichromene (CBC)	0.01 % w/w	< 0.01	-
Cannabicyclol (CBL)	0.01 % w/w	Non Detect	-
Cannabichromic Acid (CBCA)	0.01 % w/w	Non Detect	-

Certificate of Analysis

Terpene Profile

Product: Hemp Derived Whole Plant Concentrate
Procedure ID: C5933-GCMS (Internal)

Product Batch ID: Vermont, USA

Total Terpenes: 220 ppm

Analyte	Units	Reporting Limit	Results
α-Pinene	PPM	2	11
Camphene	PPM	2	< 2
Sabinene-	PPM	2	< 2
β-Pinene	PPM	2	< 2
β-Myrcene	PPM	2	< 2
.α-Phellandrene	PPM	2	< 2
Carene	PPM	2	< 2
α-Terpinene	PPM	2	< 2
D-Limonene	PPM	2	< 2
o-Cymene	PPM	2	< 2
Eucalyptol	PPM	2	< 2
β-Ocimene	PPM	2	< 2
γTerpinene	PPM	2	< 2
Terpinolene	PPM	2	< 2
Sabinene Hydrate	PPM	2	< 2
Fenchone	PPM	2	< 2
Linalool	PPM	2	< 2
Fenchol	PPM	2	< 2
Isopulegol	PPM	2	< 2
Camphor	PPM	2	< 2
Isoborneol	PPM	2	< 2
Menthol	PPM	2	< 2
endo-Borneol	PPM	2	< 2
α-Terpineol	PPM	2	42
γ Terpineol	PPM	2	< 2
Nerol	PPM	2	< 2
Pulegone	PPM	2	< 2
Geraniol	PPM	2	< 2
Geranyl acetate	PPM	2	< 2
α-Cedrene	PPM	2	< 2
(E)-β-Famesene	PPM	2	< 2
Caryophyllene	PPM	2	64
α-Humulene	PPM	2	50
trans-Neradiol	PPM	2	< 2
cis-Neradiol	PPM	2	< 2
Valencene	PPM	2	< 2
Guaiol	PPM	2	< 2
Caryophyllene Oxide	PPM	2	24
Cedrol	PPM	2	< 2
α-Bisabolol	PPM	2	29

*BQL - Below quantitation limit

Certificate of Analysis

Residual Solvents

Product: Hemp Derived Whole Plant Concentrate **Product Batch ID:** Vermont, USA
Procedure ID: C5923-GCMS (Internal)

Analyte	Units	Reporting Limit	MRL (USP 467)	Result
Methanol	ppm	25	< 3000	<25 PASS
Pentane	ppm	25	< 5000	< 25 PASS
Ethanol	ppm	25	< 5000	80 PASS
Acetone	ppm	25	< 5000	< 25 PASS
Isopropanol	ppm	25	< 5000	< 25 PASS
Acetonitrile	ppm	25	< 410	<25 PASS
n-Hexane	ppm	25	< 290	< 25 PASS
Tetrahydrofuran	ppm	25	< 720	< 25 PASS
Chloroform	ppm	25	< 60	< 25 PASS
n-Heptane	ppm	25	< 5000	< 25 PASS
Toluene	ppm	25	< 890	< 25 PASS
m & p Xylene	ppm	25	< 2170	< 25 PASS