

Certificate of Analysis

PRODUCT INFORMATION

Product: Hemp Derived Broad Spectrum Distillate
Description: 250 mg Total CBD in 1 FL OZ in Organic MCT
Flavoring: Bacon
Batch ID: D1N5880X0-8B08MN
Mfg Date: 14-Sep-19
Product Code: D1N8MN
Production ID: VS091419D8MN
Biomass Source: Vermont, USA
Cultivar: Blend



Product of Vermont USA

PRODUCT DATA

Parameter	Test Procedure	Specification	Units	Result
Appearance (20 - 25°C)	ASTM E1627 - 11	Golden viscous liquid	-	PASS
Odor (20 - 25°C)	ASTM E1627 - 11	Bacon, smoky	-	PASS
Total CBD (Potency)	C5210-LCUV (Internal)	250 - 275	mg/30 mL	269 PASS
CBDA	C5210-LCUV (Internal)	≤ 0.05	%w/w	< 0.05 PASS
Delta 9-THC (Compliance)	C5210-LCUV (Internal)	≤ 0.34	%w/w	< 0.05 PASS
THCA-A	C5210-LCUV (Internal)	≤ 0.05	%w/w	< 0.05 PASS
Minor Cannabinoids	C6198-LCMSMS (Internal)	≥ 0.01	%w/w	0.03 PASS
Terpenes**	C5933-GCMS (Internal)	≤50	ppm	< 20 PASS
Water Activity	D8196-18	≤ 0.250	Aw	0.381 PASS
Residual Solvents*	C5923-GCMS (Internal)	USP 467**	ppm	PASS
Microbiological Screen*	MCR-TM-00006 (External)	MDH Exhibit 6	-	PASS
Heavy Metals*	MCR-TM-00008 (External)	MDH Exhibit 4	ppb	PASS
Pesticides*	MCR-TM-00009 (External)	MDH Exhibit 5	ppb	PASS
Mycotoxins*	MCR-TM-00013 (External)	MDH Exhibit 6	ppb	PASS

*Results based on source whole plant concentrate prior to distillation.

**Class I & II solvents methanol, pentane, ethanol, acetone, 2-propanol, acetonitrile, n-hexane, tetrahydrofuran, chloroform, n-heptane, toluene, xylene (m,p).

***Specification limits are set based on internal process monitoring and represent expected levels depending on the type of material described in this document.

****MDH - Massachusetts Department of Health

*****Terpenes results are representative of material prior to flavor addition.

PRODUCT STABILITY

Recommended Storage: 20-25 ° C (68-77° F), Refrigerate for long term storage (> 3 months).

Retest Date: 1-Sep-21 Avoid exposure to extreme hot or cold and protect from exposure to light.

IMPORTANT: Some data for this product are collected using NEP internal analytical testing procedures undergoing validation. Testing results will vary within reasonable procedure performance limits. Results demonstrating regulatory compliance are provided by NEP for directional purposes in support of manufacturing processes and are not a substitute for 3rd party lab testing of this material. External testing denoted by "(External)" in procedure field is performed by MCR Labs (Framingham, MA USA); reports available upon request.

Approved by:



Date: 24-Sep-19

Name: Keith Griswold, M.S.

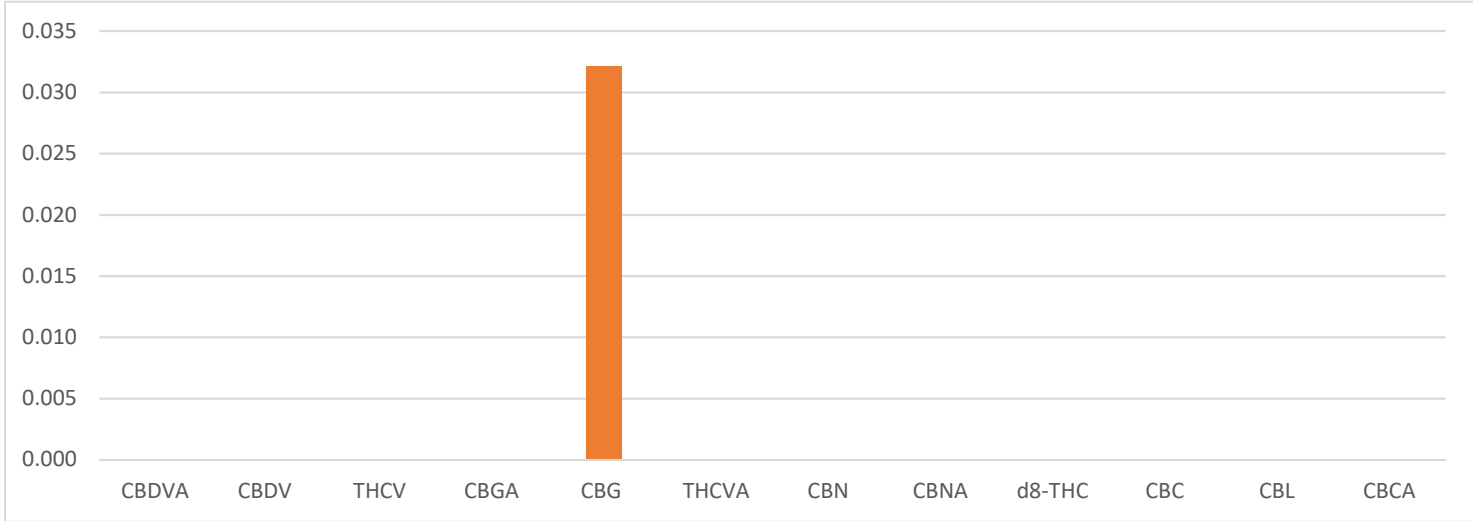
Title: Director of Analytics & Formulations

Certificate of Analysis

Minor Cannabinoids

Product: Hemp Derived Broad Spectrum Distillate **Product Batch ID:** D1N5880X0-8B08MN
Procedure ID: C6198-LCMSMS (Internal)

Total Minor Cannabinoids: 0.03 %w/w



Analyte	Reporting Limit	%W/W	MG/G
Cannabidivarinic Acid (CBDVA)	0.005% w/w	Non Detect	-
Cannabidivarin (CBDV)	0.005% w/w	Non Detect	-
Tetrahydrocannabivarin (THCV)	0.005% w/w	< 0.005	-
Cannabigerolic Acid (CBGA)	0.005% w/w	Non Detect	-
Cannabigerol (CBG)	0.005% w/w	0.032	0.32
Tetrahydrocannabivarinic Acid (THCVA)	0.005% w/w	Non Detect	-
Cannabinol (CBN)	0.005% w/w	< 0.005	-
Cannabinolic Acid (CBNA)	0.005% w/w	Non Detect	-
Delta 8-THC	0.005% w/w	< 0.005	-
Cannabichromene (CBC)	0.005% w/w	< 0.005	-
Cannabicyclol (CBL)	0.005% w/w	< 0.005	-
Cannabichromic Acid (CBCA)	0.005% w/w	Non Detect	-

Certificate of Analysis

Terpene Profile

Product: Hemp Derived Broad Spectrum Distillate
Procedure ID: C5933-GCMS (Internal)

Product Batch ID: D1N5880X0-8B08MN

Analyte	Units	Reporting Limit	Total Terpenes:	BQL	%w/w
α-Pinene	PPM	20			< 20
Camphene	PPM	20			Non Detect
Sabinene-	PPM	20			Non Detect
β-Pinene	PPM	20			Non Detect
β-Myrcene	PPM	20			< 20
.α-Phellandrene	PPM	20			Non Detect
Carene	PPM	20			Non Detect
α-Terpinene	PPM	20			Non Detect
D-Limonene	PPM	20			Non Detect
o-Cymene	PPM	20			< 20
Eucalyptol	PPM	20			Non Detect
β-Ocimene	PPM	20			Non Detect
γTerpinene	PPM	20			Non Detect
Terpinolene	PPM	20			Non Detect
Sabinene Hydrate	PPM	20			Non Detect
Fenchone	PPM	20			Non Detect
Linalool	PPM	20			< 20
Fenchol	PPM	20			Non Detect
Isopulegol	PPM	20			Non Detect
Camphor	PPM	20			Non Detect
Isoborneol	PPM	20			Non Detect
Menthol	PPM	20			Non Detect
endo-Borneol	PPM	20			Non Detect
α-Terpineol	PPM	20			< 20
γ Terpineol	PPM	20			Non Detect
Nerol	PPM	20			Non Detect
Pulegone	PPM	20			Non Detect
Geraniol	PPM	20			Non Detect
Geranyl acetate	PPM	20			Non Detect
α-Cedrene	PPM	20			Non Detect
(E)-β-Famesene	PPM	20			Non Detect
Caryophyllene	PPM	20			< 20
α-Humulene	PPM	20			<20
trans-Neradiol	PPM	20			Non Detect
cis-Neradiol	PPM	20			Non Detect
Valencene	PPM	20			Non Detect
Guaiol	PPM	20			<20
Caryophyllene Oxide	PPM	20			Non Detect
Cedrol	PPM	20			Non Detect
α-Bisabolol	PPM	20			<20

*BQL - Below quantitation limit

** Results represent material prior to flavor addition.

Certificate of Analysis

Residual Solvents

Product: Hemp Derived Broad Spectrum Distillate **Product Batch ID:** D1N5880X0-8B08MN
Procedure ID: C5923-GCMS (Internal)

Analyte	Units	Reporting Limit	MRL (USP 467)	Result
Methanol	ppm	25	< 3000	< 25 PASS
Pentane	ppm	25	< 5000	< 25 PASS
Ethanol	ppm	25	< 5000	961 PASS
Acetone	ppm	25	< 5000	< 25 PASS
Isopropanol	ppm	25	< 5000	< 25 PASS
Acetonitrile	ppm	25	< 410	< 25 PASS
n-Hexane	ppm	25	< 290	< 25 PASS
Tetrahydrofuran	ppm	25	< 720	< 25 PASS
Chloroform	ppm	25	< 60	< 25 PASS
n-Heptane	ppm	25	< 5000	< 25 PASS
Toluene	ppm	25	< 890	< 25 PASS
m & p Xylene	ppm	25	< 2170	< 25 PASS

*ppm (parts per million)