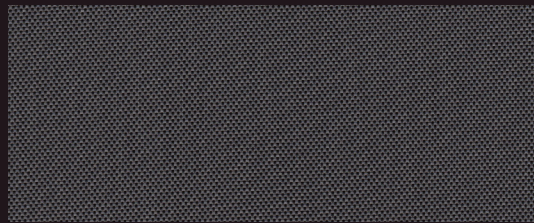


E Screen™ & E Screen™ WITH KOOLBLACK® TECHNOLOGY

High Performance | 0.5% 1% 3% 5% 10% openness



0.5%

Charcoal/Grey



1%

Charcoal/Grey



3%

Charcoal/Grey



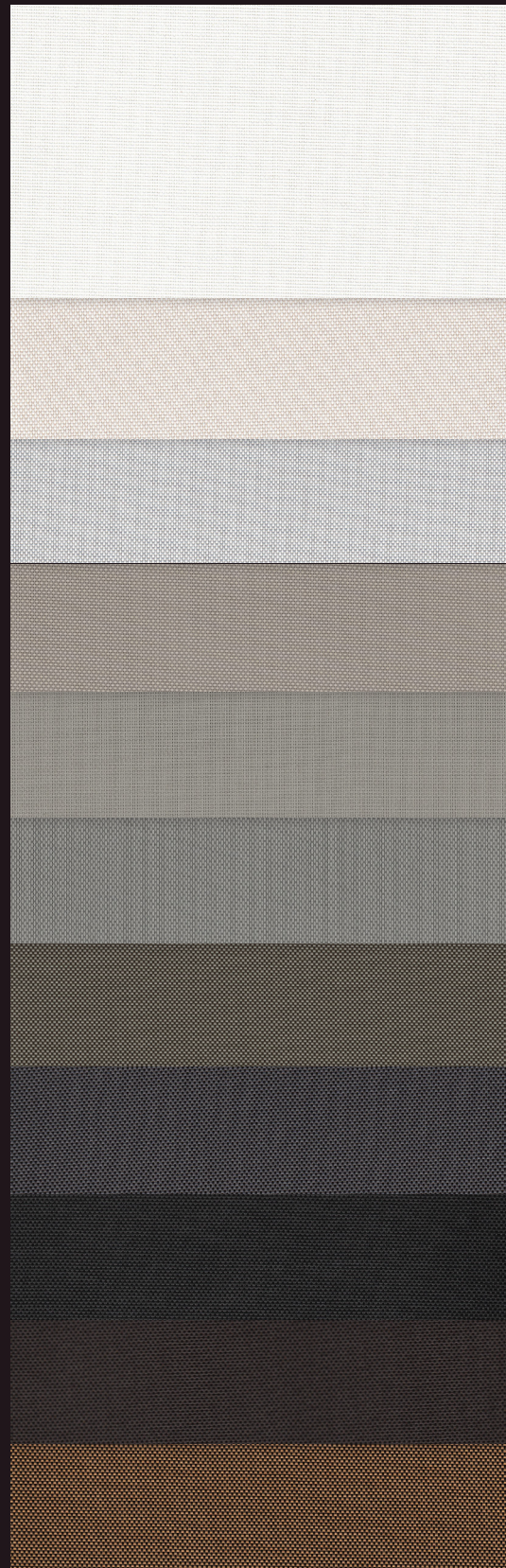
5%

Charcoal/Grey



10%

Charcoal/Grey



White/White

White/Linen

White/Pearl

Pearl/Linen

Pearl/Pearl

Pearl/Grey

Charcoal/
Grey-Stone*

Charcoal/
Grey*

Charcoal/
Charcoal*

Charcoal/
Cocoa*

Charcoal/
Apricot*

*Available in KOOLBLACK® Technology.

Fabrics sampled on the waterfall are 3% openness.

Fabric Specifications

Fabric Style	UV Blockage	Composition	Standard Roll Length	Warranty
Basketweave	Approximately 90%-99.5%	36% Fiberglass, 64% Vinyl	34 ly (31 lm)	5 Year Exterior 10 Year Interior

E Screen™

Available Colors

White/White	White/Linen	White/Pearl
Pearl/Linen	Pearl/Pearl	Pearl/Grey
Charcoal/Grey-Stone	Charcoal/Grey	Charcoal/Charcoal
Charcoal/Cocoa	Charcoal/Apricot	

Openness	Item No.	Available Widths			Weight oz/yd ² (±5%)	Thickness inches (±5%)
		78"	98"	122"		
0.5%	007500			•	13.5	0.023
1%	007501	•	•	•	13.3	0.020
3%	007503	•	•	•	11.6	0.017
5%	007505	•	•	•	10.7	0.016
10%	007510	•	•	•	10.3	0.020



0.5%

Charcoal/Grey



1%

Charcoal/Grey

E Screen™ with KOOLBLACK TECHNOLOGY

Available Colors

Charcoal/Grey-Stone	Charcoal/Grey	Charcoal/Charcoal
Charcoal/Cocoa	Charcoal/Apricot	

Openness	Item No.	Available Widths			Weight oz/yd ² (±5%)	Thickness inches (±5%)
		78"	98"	122"		
0.5%	007700			•	14.6	0.025
1%	007701		•	•	12.9	0.021
3%	007703		•	•	11.3	0.020
5%	007705		•	•	10.6	0.019
10%	007710		•	•	10.6	0.021



3%

Charcoal/Grey



5%

Charcoal/Grey



10%

Charcoal/Grey



Looking for fenestration data?
Scan here for complete fabric resources.

MermetUSA.com



Mermet Corporation

5970 N. Main Street
1.866.902.9647

Cowpens, SC 29330
info@MermetUSA.com

Product performance and specification data is subject to change, visit www.Mermetusa.com for the most current information

02.24.v1

Product Specifications Sheet

E Screen™ 0.5% WITH KOOLBLACK TECHNOLOGY

Product Category: High Performance
Openness Factor: 0.5%
UV Blockage: Approximately 99.5%
Fabric Style: Basketweave
Item #: 007700

Composition: 36% fiberglass / 64% vinyl
Standard Packaging: Rolls of 34 ly (31 lm)
Width: 122" (310 cm)
Weight: 14.6 oz / yd2 (494 g / m2) ± 5%
Thickness: 0.025" (0.63 mm) ± 5%

Fenestration Data

		Fabric Properties						Fabric & Glass			
		Thermal				Optical		Commercial		Residential	
Color#	Color Name	Rs IR (%)	Total Solar			Rv (%)	Tv (%)	SHGC % Improvement		SHGC	
			Rs (%)	As (%)	Ts (%)			Interior	Exterior	Interior	Exterior
035035	Charcoal/Charcoal	64	37	52	12	14	2	21	82	0.48	0.14
00K122	Charcoal/Grey-Stone	62	38	51	11	17	2	24	84	0.47	0.14
035131	Charcoal/Grey	65	38	52	10	16	1	24	84	0.47	0.13
035032	Charcoal/Cocoa	64	37	52	11	13	1	21	84	0.48	0.14
035071	Charcoal/Apricot	63	39	48	13	19	3	24	82	0.47	0.14

Fabric properties may vary from the values reported due to standard variations in the manufacturing process. The fabric fenestration testing was conducted in accordance with ASTM G173 & ASTM E903: Total Solar Transmittance (Ts), Total Solar Reflectance (Rs), Solar Reflectance in Infrared (Rs IR), Total Solar Absorptance (As), Visible Reflectance (Rv), and Visible Transmission (Tv). Glass performance tests for Solar Heat Gain Coefficient (SHGC) were conducted using the Lawrence Berkeley National Laboratory WINDOW NFRC certified software. SHGC % improvement for commercial applications is based on a standard commercial glass makeup of Double Glazing 6 mm / 1/2" air / 6 mm with low E on surface #2. SHGC for residential applications is based on a default residential glass makeup of 3mm clear glass / 1/2" air / 3mm clear glass. Results for SHGC were obtained using the center of glass. Acoustical performance was tested in accordance with ASTM C423: NRC is Noise Reduction Coefficient; SAA is Sound Absorption Average. For up-to-date test results, performance specifications and larger samples, contact Mermet at info@MermetUSA.com.

Fabrication Methods:

Cutting: Crush, cold, or ultrasonic

Welding: Fabric welds without tape. 200-275°F. 5-10s.
 Radio frequency, impulse, hot air, or wedge

Fire Classifications:

NFPA 701-19 TM#1, California U.S. Title 19
 CAN/ULC-S109 Small & Large Flame Test

Bacterial and Fungal Resistance:

ASTM E2180, ASTM G21

Environmental Benefits:

RoHS - Lead Free

GREENGUARD Gold

Acoustical Performance:

NRC: 0.10, SAA: 0.10

We recommend testing all cutting and welding methods prior to use to confirm they meet your individual fabrication specifications.

Care & Handling

Remove dust with a soft duster, cloth, sponge, vacuum cleaner, or compressed air. Do not scrub. Do not use solvents or any abrasive substance which might damage the coating of the fabric. For minor stains clean with a soft cloth, sponge, or soft brush dipped in lukewarm soapy water using mild detergent. Rinse with clean water. Leave the blind down until completely dry. For tougher stains and disinfecting instructions visit www.MermetUSA.com.

5970 N. Main Street • Cowpens, SC 29330

Sales Department: Ph (866) 902-9647

info@MermetUSA.com



Product Specifications Sheet

E Screen™ 1% WITH KOOLBLACK TECHNOLOGY Specifications

Product Category: High Performance
Openness Factor: 1%
UV Blockage: Approximately 99%
Fabric Style: Basketweave
Item #: 007701

Composition: 36% fiberglass / 64% vinyl
Standard Packaging: Rolls of 34 ly (31 lm)
Width: 98" (250 cm), 122" (310 cm)
Weight: 12.95 oz / yd2 (439 g / m2) ± 5%
Thickness: 0.021" (0.53 mm) ± 5%

Fenestration Data

		Fabric Properties						Fabric & Glass			
		Thermal				Optical		Commercial		Residential	
Color#	Color Name	Rs IR (%)	Total Solar			Rv (%)	Tv (%)	SHGC % Improvement		SHGC	
			Rs (%)	As (%)	Ts (%)			Interior	Exterior	Interior	Exterior
035035	Charcoal/Charcoal	64	35	53	12	9	2	18	82	0.48	0.14
00K122	Charcoal/Grey-Stone	63	38	50	12	17	3	24	82	0.47	0.14
035131	Charcoal/Grey	67	40	49	11	16	2	24	84	0.46	0.13
035032	Charcoal/Cocoa	64	36	52	12	11	2	21	82	0.48	0.14
035071	Charcoal/Apricot	62	39	47	14	19	3	24	82	0.46	0.15

Fabric properties may vary from the values reported due to standard variations in the manufacturing process. The fabric fenestration testing was conducted in accordance with ASTM G173 & ASTM E903: Total Solar Transmittance (Ts), Total Solar Reflectance (Rs), Solar Reflectance in Infrared (Rs IR), Total Solar Absorptance (As), Visible Reflectance (Rv), and Visible Transmission (Tv). Glass performance tests for Solar Heat Gain Coefficient (SHGC) were conducted using the Lawrence Berkeley National Laboratory WINDOW NFRC certified software. SHGC % improvement for commercial applications is based on a standard commercial glass makeup of Double Glazing 6 mm / 1/2" air / 6 mm with low E on surface #2. SHGC for residential applications is based on a default residential glass makeup of 3mm clear glass / 1/2" air / 3mm clear glass. Results for SHGC were obtained using the center of glass. Acoustical performance was tested in accordance with ASTM C423: NRC is Noise Reduction Coefficient; SAA is Sound Absorption Average. For up-to-date test results, performance specifications and larger samples, contact Mermet at info@MermetUSA.com.

Fabrication Methods:

Cutting: Crush, cold, or ultrasonic

Welding: Fabric welds without tape. 200-275°F. 5-10s.
 Radio frequency, impulse, hot air, or wedge

Fire Classifications:

NFPA 701-19 TM#1, California U.S. Title 19
 CAN/ULC-S109-14 Small & Large Flame Test

Bacterial and Fungal Resistance:

ASTM E2180, ASTM G21

Environmental Benefits:

RoHS - Lead Free

GREENGUARD Gold

Acoustical Performance:

NRC: 0.45, SAA: 0.46

We recommend testing all cutting and welding methods prior to use to confirm they meet your individual fabrication specifications.

Care & Handling

Remove dust with a soft duster, cloth, sponge, vacuum cleaner, or compressed air. Do not scrub. Do not use solvents or any abrasive substance which might damage the coating of the fabric. For minor stains clean with a soft cloth, sponge, or soft brush dipped in lukewarm soapy water using mild detergent. Rinse with clean water. Leave the blind down until completely dry. For tougher stains and disinfecting instructions visit www.MermetUSA.com.

5970 N. Main Street • Cowpens, SC 29330

Sales Department: Ph (866) 902-9647

info@MermetUSA.com



Product Specifications Sheet

E Screen™ 3% WITH KOOLBLACK TECHNOLOGY

Product Category: High Performance
Openness Factor: 3%
UV Blockage: Approximately 97%
Fabric Style: Basketweave
Item #: 007703

Composition: 36% fiberglass / 64% vinyl
Standard Packaging: Rolls of 34 ly (31 lm)
Width: 98" (250 cm), 122" (310 cm)
Weight: 11.3 oz / yd2 (382 g / m2) ± 5%
Thickness: 0.020" (0.51 mm) ± 5%

Fenestration Data

		Fabric Properties						Fabric & Glass			
		Thermal				Optical		Commercial		Residential	
Color#	Color Name	Rs IR (%)	Total Solar			Rv (%)	Tv (%)	SHGC % Improvement		SHGC	
			Rs (%)	As (%)	Ts (%)			Interior	Exterior	Interior	Exterior
035035	Charcoal/Charcoal	61	34	49	17	10	6	16	82	0.53	0.16
00K122	Charcoal/Grey-Stone	60	38	46	16	19	7	24	79	0.48	0.16
035131	Charcoal/Grey	65	40	46	14	18	5	24	82	0.47	0.15
035032	Charcoal/Cocoa	61	35	48	17	12	6	16	82	0.52	0.16
035071	Charcoal/Apricot	58	38	44	18	22	6	21	82	0.50	0.16

Fabric properties may vary from the values reported due to standard variations in the manufacturing process. The fabric fenestration testing was conducted in accordance with ASTM G173 & ASTM E903: Total Solar Transmittance (Ts), Total Solar Reflectance (Rs), Solar Reflectance in Infrared (Rs IR), Total Solar Absorptance (As), Visible Reflectance (Rv), and Visible Transmission (Tv). Glass performance tests for Solar Heat Gain Coefficient (SHGC) were conducted using the Lawrence Berkeley National Laboratory WINDOW NFRC certified software. SHGC % improvement for commercial applications is based on a standard commercial glass makeup of Double Glazing 6 mm / 1/2" air / 6 mm with low E on surface #2. SHGC for residential applications is based on a default residential glass makeup of 3mm clear glass / 1/2" air / 3mm clear glass. Results for SHGC were obtained using the center of glass. Acoustical performance was tested in accordance with ASTM C423: NRC is Noise Reduction Coefficient; SAA is Sound Absorption Average. For up-to-date test results, performance specifications and larger samples, contact Mermet at info@MermetUSA.com.

Fabrication Methods:

Cutting: Crush, cold, or ultrasonic

Welding: Fabric welds without tape. 200-275°F. 5-10s.
 Radio frequency, impulse, hot air, or wedge

Fire Classifications:

NFPA 701-19 TM#1, California U.S. Title 19
 CAN/ULC-S109-14 Small & Large Flame Test

Bacterial and Fungal Resistance:

ASTM E2180, ASTM G21

Environmental Benefits:

RoHS - Lead Free

GREENGUARD Gold

Acoustical Performance:

NRC: 0.15, SAA: 0.17

We recommend testing all cutting and welding methods prior to use to confirm they meet your individual fabrication specifications.

Care & Handling

Remove dust with a soft duster, cloth, sponge, vacuum cleaner, or compressed air. Do not scrub. Do not use solvents or any abrasive substance which might damage the coating of the fabric. For minor stains clean with a soft cloth, sponge, or soft brush dipped in lukewarm soapy water using mild detergent. Rinse with clean water. Leave the blind down until completely dry. For tougher stains and disinfecting instructions visit www.MermetUSA.com.

5970 N. Main Street • Cowpens, SC 29330

Sales Department: Ph (866) 902-9647

info@MermetUSA.com





Product Specifications Sheet

E Screen™ 5% WITH KOOLBLACK TECHNOLOGY

Product Category: High Performance
Openness Factor: 5%
UV Blockage: Approximately 95%
Fabric Style: Basketweave
Item #: 007705

Composition: 36% fiberglass / 64% vinyl
Standard Packaging: Rolls of 34 ly (31 lm)
Width: 98" (250 cm), 122" (310 cm)
Weight: 10.6 oz / yd2 (358 g / m2) ± 5%
Thickness: 0.019" (0.47 mm) ± 5%

Fenestration Data

Color#		Fabric Properties						Fabric & Glass			
		Thermal				Optical		Commercial		Residential	
		Rs IR (%)	Total Solar			Rv (%)	Tv (%)	SHGC % Improvement		SHGC	
			Rs (%)	As (%)	Ts (%)			Interior	Exterior	Interior	Exterior
035035	Charcoal/Charcoal	60	33	49	18	10	6	16	82	0.54	0.16
00K122	Charcoal/Grey-Stone	58	36	45	19	18	9	21	76	0.49	0.18
035131	Charcoal/Grey	62	38	45	17	17	7	21	79	0.48	0.17
035032	Charcoal/Cocoa	57	32	49	19	11	7	16	82	0.55	0.17
035071	Charcoal/Apricot	59	37	42	21	19	9	18	79	0.52	0.18

Fabric properties may vary from the values reported due to standard variations in the manufacturing process. The fabric fenestration testing was conducted in accordance with ASTM G173 & ASTM E903: Total Solar Transmittance (Ts), Total Solar Reflectance (Rs), Solar Reflectance in Infrared (Rs IR), Total Solar Absorptance (As), Visible Reflectance (Rv), and Visible Transmission (Tv). Glass performance tests for Solar Heat Gain Coefficient (SHGC) were conducted using the Lawrence Berkeley National Laboratory WINDOW NFRC certified software. SHGC % improvement for commercial applications is based on a standard commercial glass makeup of Double Glazing 6 mm / 1/2" air / 6 mm with low E on surface #2. SHGC for residential applications is based on a default residential glass makeup of 3mm clear glass / 1/2" air / 3mm clear glass. Results for SHGC were obtained using the center of glass. Acoustical performance was tested in accordance with ASTM C423: NRC is Noise Reduction Coefficient; SAA is Sound Absorption Average. For up-to-date test results, performance specifications and larger samples, contact Mermet at info@MermetUSA.com.

Fabrication Methods:

Cutting: Crush, cold, or ultrasonic

Welding: Fabric welds without tape. 200-275°F. 5-10s.
Radio frequency, impulse, hot air, or wedge

Fire Classifications:

NFPA 701-19 TM#1, California U.S. Title 19
CAN/ULC-S109-14 Small & Large Flame Test

Bacterial and Fungal Resistance:

ASTM E2180, ASTM G21

Environmental Benefits:

RoHS - Lead Free

GREENGUARD Gold

Acoustical Performance:

NRC: 0.10, SAA: 0.12

We recommend testing all cutting and welding methods prior to use to confirm they meet your individual fabrication specifications.

Care & Handling

Remove dust with a soft duster, cloth, sponge, vacuum cleaner, or compressed air. Do not scrub. Do not use solvents or any abrasive substance which might damage the coating of the fabric. For minor stains clean with a soft cloth, sponge, or soft brush dipped in lukewarm soapy water using mild detergent. Rinse with clean water. Leave the blind down until completely dry. For tougher stains and disinfecting instructions visit www.MermetUSA.com.

5970 N. Main Street • Cowpens, SC 29330

Sales Department: Ph (866) 902-9647

info@MermetUSA.com



Product Specifications Sheet

E Screen™ 10% WITH KOOLBLACK TECHNOLOGY Specifications

Product Category: High Performance
Openness Factor: 10%
UV Blockage: Approximately 90%
Fabric Style: Basketweave
Item #: 007710

Composition: 36% fiberglass / 64% vinyl
Standard Packaging: Rolls of 34 ly (31 lm)
Width: 98" (250 cm), 122" (310 cm)
Weight: 10.6 oz / yd2 (360 g / m2) ± 5%
Thickness: 0.021" (0.53 mm) ± 5%

Fenestration Data

Color#	Color Name	Fabric Properties						Fabric & Glass			
		Thermal				Optical		Commercial		Residential	
		Rs IR (%)	Total Solar			Rv (%)	Tv (%)	SHGC % Improvement		SHGC	
			Rs (%)	As (%)	Ts (%)			Interior	Exterior	Interior	Exterior
035035	Charcoal/Charcoal	55	32	45	23	13	13	18	74	0.52	0.21
00K122	Charcoal/Grey-Stone	48	32	46	22	17	14	21	74	0.51	0.21
035131	Charcoal/Grey	56	34	43	23	15	14	18	71	0.51	0.22
035032	Charcoal/Cocoa	56	32	44	24	12	15	18	71	0.52	0.22
035071	Charcoal/Apricot	42	28	48	24	16	14	21	71	0.53	0.22

Fabric properties may vary from the values reported due to standard variations in the manufacturing process. The fabric fenestration testing was conducted in accordance with ASTM G173 & ASTM E903: Total Solar Transmittance (Ts), Total Solar Reflectance (Rs), Solar Reflectance in Infrared (Rs IR), Total Solar Absorptance (As), Visible Reflectance (Rv), and Visible Transmission (Tv). Glass performance tests for Solar Heat Gain Coefficient (SHGC) were conducted using the Lawrence Berkeley National Laboratory WINDOW NFRC certified software. SHGC % improvement for commercial applications is based on a standard commercial glass makeup of Double Glazing 6 mm / 1/2" air / 6 mm with low E on surface #2. SHGC for residential applications is based on a default residential glass makeup of 3mm clear glass / 1/2" air / 3mm clear glass. Results for SHGC were obtained using the center of glass. Acoustical performance was tested in accordance with ASTM C423: NRC is Noise Reduction Coefficient; SAA is Sound Absorption Average. For up-to-date test results, performance specifications and larger samples, contact Mermet at info@MermetUSA.com.

Fabrication Methods:

Cutting: Crush, cold, or ultrasonic

Welding: Fabric welds without tape. 200-275°F. 5-10s.
Radio frequency, impulse, hot air, or wedge

Fire Classifications:

NFPA 701-19 TM#1, California U.S. Title 19

CAN/ULC-S109 Small & Large Flame Test

Bacterial and Fungal Resistance:

ASTM E2180, ASTM G21

Environmental Benefits:

RoHS - Lead Free

GREENGUARD Gold

Acoustical Performance:

NRC: 0.05, SAA: 0.06

We recommend testing all cutting and welding methods prior to use to confirm they meet your individual fabrication specifications.

Care & Handling

Remove dust with a soft duster, cloth, sponge, vacuum cleaner, or compressed air. Do not scrub. Do not use solvents or any abrasive substance which might damage the coating of the fabric. For minor stains clean with a soft cloth, sponge, or soft brush dipped in lukewarm soapy water using mild detergent. Rinse with clean water. Leave the blind down until completely dry. For tougher stains and disinfecting instructions visit www.MermetUSA.com.

5970 N. Main Street • Cowpens, SC 29330

Sales Department: Ph (866) 902-9647

info@MermetUSA.com

