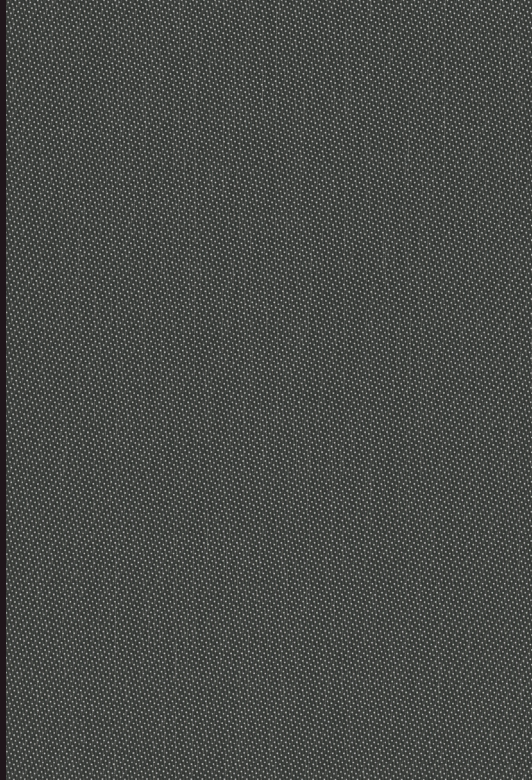


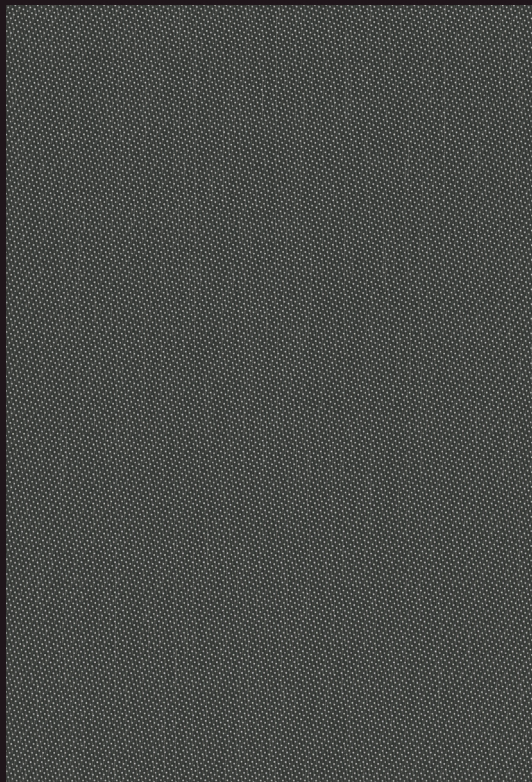
T Screen™ & T Screen™ WITH KOOLBLACK® TECHNOLOGY

High Performance | 1% 3% openness



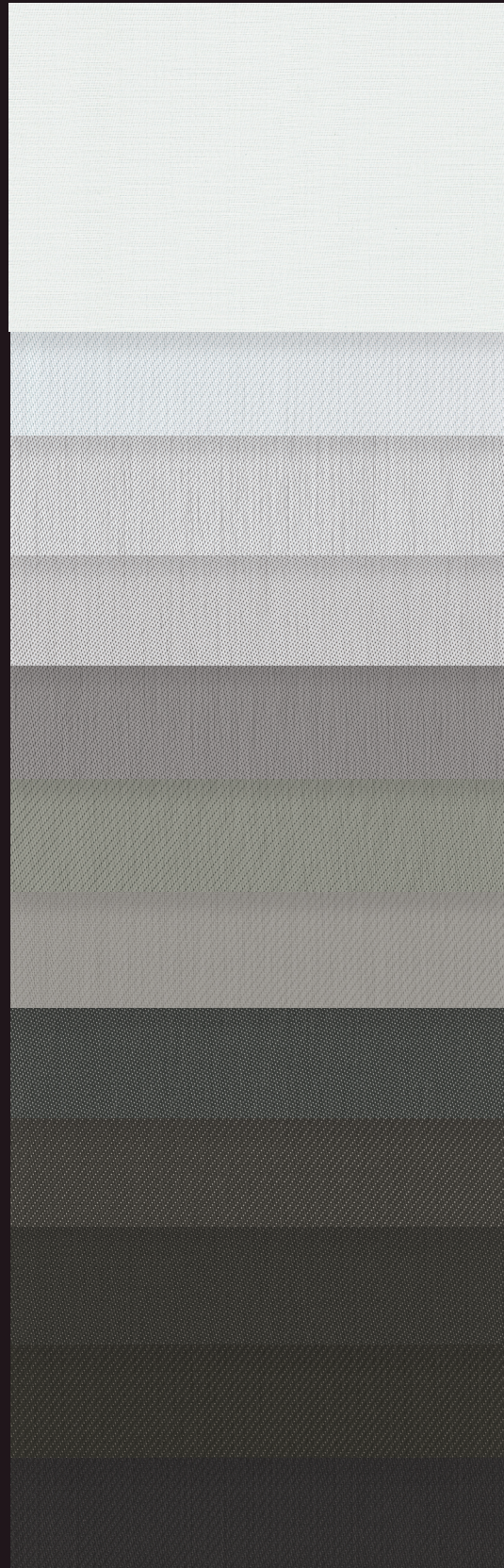
1%

030002 | Charcoal/White



3%

030002 | Charcoal/White



002002
White/White

02M228
White/
White-Steel

002001
White/Grey

002030
White/Charcoal

007030
Pearl/Charcoal

07M387
Pearl/
Charcoal-Fawn

07M287
Pearl/
Stone-Fawn

030002
Charcoal/White*

30M102
Charcoal/
Grey-White*

00M122
Charcoal/
Grey-Stone*

30M328
Charcoal/
Charcoal-Steel*

30M329
Charcoal/
Charcoal-Iron*

*Available in KOOLBLACK® Technology.

Fabrics sampled on the waterfall are 3% openness.

Fabric Specifications

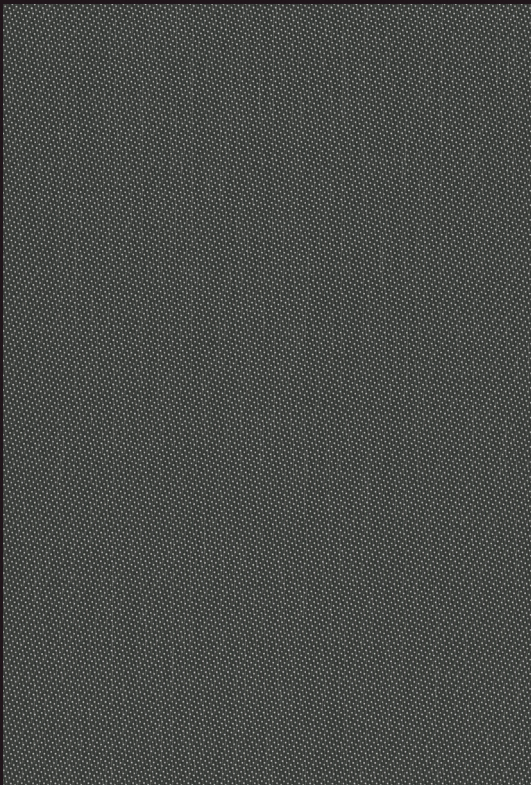
Fabric Style	UV Blockage	Composition	Standard Roll Length	Warranty
Satin	Approximately 97%-99%	36% Fiberglass, 64% Vinyl	30 ly (27 lm)	5 Year Exterior 10 Year Interior

T Screen™

Available Colors

White/White	White/White-Steel	White/Grey
White/Charcoal	Pearl/Charcoal	Pearl/Charcoal-Fawn
Pearl/Stone-Fawn	Charcoal/White	Charcoal/Grey-White
Charcoal/Grey-Stone	Charcoal/Charcoal-Steel	Charcoal/Charcoal-Iron

Openness	Item No.	Available Widths			Weight oz/yd² (±5%)	Thickness inches (±5%)
		78"	98"	122"		
1%	006701	•		•	13.83	0.028
3%	006703	•		•	12.59	0.027



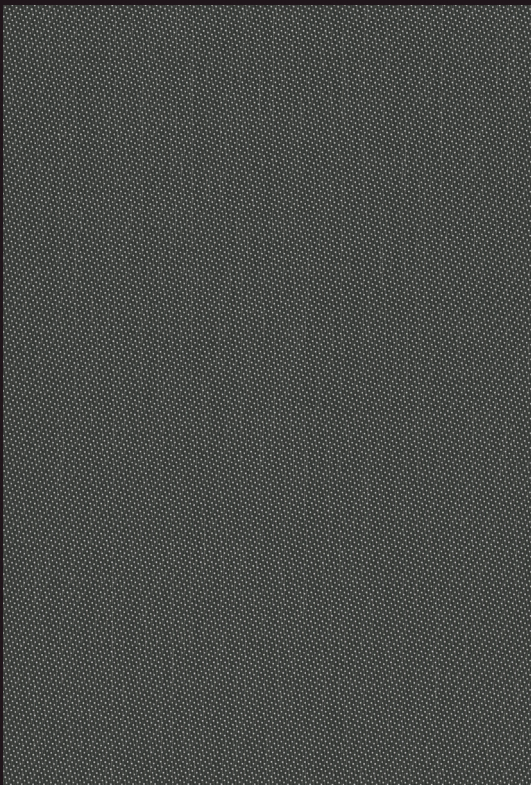
1% 030002 | Charcoal/White

T Screen™ with KOOLBLACK TECHNOLOGY

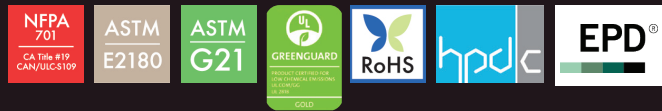
Available Colors

Charcoal/White	Charcoal/Grey-White	Charcoal/Grey-Stone
Charcoal/Charcoal-Steel	Charcoal/Charcoal-Iron	

Openness	Item No.	Available Widths			Weight oz/yd² (±5%)	Thickness inches (±5%)
		78"	98"	122"		
1%	009701		•	•	13.54	0.024
3%	009703		•	•	13.27	0.029



3% 030002 | Charcoal/White



Looking for fenestration data?
Scan here for complete fabric resources.

MermetUSA.com



Mermet Corporation
5970 N. Main Street | Cowpens, SC 29330
1.866.902.9647 | info@MermetUSA.com

Product performance and specification data is subject to change, visit www.Mermetusa.com for the most current information



Sun Control Textiles™

Product Specifications Sheet

T Screen™ 1% WITH KOOLBLACK TECHNOLOGY

Product Category: High Performance
Openness Factor: 1%
UV Blockage: Approximately 99%
Fabric Style: Satin
Item #: 009701

Composition: 36% fiberglass / 64% vinyl
Standard Packaging: Rolls of 30 ly (27 lm)
Width: 98" (250 cm), 122" (310 cm)
Weight: 13.54 oz / yd2 (459 g / m2) ± 5%
Thickness: 0.024" (0.61 mm) ± 5%

Fenestration Data

			Fabric Properties						Fabric & Glass			
			Thermal			Optical			Commercial		Residential	
Color #	Color Name	Side*	Rs IR (%)	Total Solar			Rv (%)	Tv (%)	SHGC % Improvement		SHGC	
				Rs (%)	As (%)	Ts (%)			Interior	Exterior	Interior	Exterior
035002	Charcoal/White	street	67	40	48	12	16	3	24	87	0.46	0.14
		room	68	59	29	12	53	3	45	82	0.34	0.11
35K102	Charcoal/Grey-White	street	67	38	51	11	14	2	21	82	0.47	0.14
		room	67	49	39	12	35	2	34	84	0.40	0.12
00K122	Charcoal/Grey-Stone	street	64	36	52	12	12	2	21	82	0.47	0.14
		room	62	43	45	12	26	2	29	84	0.44	0.15
35K328	Charcoal/Charcoal-Steel	street	60	34	55	11	11	3	21	82	0.49	0.14
		room	54	34	54	12	18	3	24	82	0.47	0.14
35K339	Charcoal/Charcoal-Iron	street	65	36	51	13	11	2	21	82	0.48	0.15
		room	65	39	48	13	16	2	24	82	0.46	0.14

*Room side: identified by the color side; Street side: identified by the charcoal side

Fabric properties may vary from the values reported due to standard variations in the manufacturing process. The fabric fenestration testing was conducted in accordance with ASTM G173 & ASTM E903: Total Solar Transmittance (Ts), Total Solar Reflectance (Rs), Solar Reflectance in Infrared (Rs IR), Total Solar Absorptance (As), Visible Reflectance (Rv), and Visible Transmission (Tv). Glass performance tests for Solar Heat Gain Coefficient (SHGC) were conducted using the Lawrence Berkeley National Laboratory WINDOW NFRC certified software. SHGC % improvement for commercial applications is based on a standard commercial glass makeup of Double Glazing 6 mm / 1/8" air / 6 mm with low E on surface #2. SHGC for residential applications is based on a default residential glass makeup of 3mm clear glass / 1/2" air / 3mm clear glass. Results for SHGC were obtained using the center of glass. Acoustical performance was tested in accordance with ASTM C423: NRC is Noise Reduction Coefficient; SAA is Sound Absorption Average. For up-to-date test results, performance specifications and larger samples, contact Mermet at info@MermetUSA.com.

Fabrication Methods:

Cutting: Crush, cold, or ultrasonic

Welding: Fabric welds without tape. 200-275°F. 5-10s.
Radio frequency, impulse, hot air, or wedge

Fire Classifications:

NFPA 701 TM#1, California U.S. Title 19
CAN/ULC-S109 Small & Large Flame Test

Bacterial and Fungal Resistance:

ASTM E2180, ASTM G21

Environmental Benefits:

RoHS - Lead Free

GREENGUARD Gold

Acoustical Performance:

NRC: 0.10, SAA: 0.11

We recommend testing all cutting and welding methods or settings with your equipment to confirm they meet your individual fabrication specifications.

Care & Handling

Remove dust with a soft duster, cloth, sponge, vacuum cleaner, or compressed air. Do not scrub. Do not use solvents or any abrasive substance which might damage the coating of the fabric. For minor stains clean with a soft cloth, sponge, or soft brush dipped in lukewarm soapy water using mild detergent. Rinse with clean water. Leave the blind down until completely dry. For tougher stains and disinfecting instructions visit www.MermetUSA.com.

5970 N. Main Street • Cowpens, SC 29330

Sales Department: Ph (866) 902-9647

info@MermetUSA.com



Product Specifications Sheet

T Screen™ 3% WITH KOOLBLACK TECHNOLOGY

Product Category: High Performance
Openness Factor: 3%
UV Blockage: Approximately 97%
Fabric Style: Satin
Item #: 009703

Composition: 36% fiberglass / 64% vinyl
Standard Packaging: Rolls of 30 ly (27 lm)
Width: 98" (250 cm), 122" (310 cm)
Weight: 13.27 oz / yd² (450 g / m²) ± 5%
Thickness: 0.029" (0.74 mm) ± 5%

Fenestration Data

Color #	Color Name	Side*	Fabric Properties						Fabric & Glass			
			Rs IR (%)	Thermal			Optical		Commercial		Residential	
				Total Solar			Rv (%)	Tv (%)	SHGC % Improvement		SHGC	
				Rs (%)	As (%)	Ts (%)			Interior	Exterior	Interior	Exterior
035002	Charcoal/White	street	65	38	47	15	15	6	21	79	0.48	0.16
		room	65	55	30	15	47	5	39	84	0.37	0.13
35K102	Charcoal/Grey-White	street	64	37	49	14	13	4	21	82	0.48	0.15
		room	64	47	39	14	32	4	32	82	0.42	0.14
00K122	Charcoal/Grey-Stone	street	62	35	51	14	11	5	21	79	0.49	0.16
		room	59	40	45	15	24	5	26	82	0.45	0.15
35K328	Charcoal/Charcoal-Steel	street	58	32	54	14	10	5	18	79	0.50	0.16
		room	53	32	54	14	15	5	21	79	0.49	0.16
35K339	Charcoal/Charcoal-Iron	street	63	34	51	15	10	4	18	79	0.49	0.16
		room	62	36	49	15	13	4	21	82	0.48	0.16

*Room side: identified by the color side; Street side: identified by the charcoal side

Fabric properties may vary from the values reported due to standard variations in the manufacturing process. The fabric fenestration testing was conducted in accordance with ASTM G173 & ASTM E903: Total Solar Transmittance (Ts), Total Solar Reflectance (Rs), Solar Reflectance in Infrared (Rs IR), Total Solar Absorptance (As), Visible Reflectance (Rv), and Visible Transmission (Tv). Glass performance tests for Solar Heat Gain Coefficient (SHGC) were conducted using the Lawrence Berkeley National Laboratory WINDOW NFRC certified software. SHGC % improvement for commercial applications is based on a standard commercial glass makeup of Double Glazing 6 mm / 1/8" air / 6 mm with low E on surface #2. SHGC for residential applications is based on a default residential glass makeup of 3mm clear glass / 1/2" air / 3mm clear glass. Results for SHGC were obtained using the center of glass. Acoustical performance was tested in accordance with ASTM C423: NRC is Noise Reduction Coefficient; SAA is Sound Absorption Average. For up-to-date test results, performance specifications and larger samples, contact Mermet at info@MermetUSA.com.

Fabrication Methods:

Cutting: Crush, cold, or ultrasonic

Welding: Fabric welds without tape. 200-275°F. 5-10s.
 Radio frequency, impulse, hot air, or wedge

Fire Classifications:

NFPA 701 TM#1, California U.S. Title 19
 CAN/ULC-S109 Small & Large Flame Test
Bacterial and Fungal Resistance:
 ASTM E2180, ASTM G21

Environmental Benefits:

RoHS - Lead Free
 GREENGUARD Gold
Acoustical Performance:
 NRC: 0.15, SAA: 0.14

We recommend testing all cutting and welding methods or settings with your equipment to confirm they meet your individual fabrication specifications.

Care & Handling

Remove dust with a soft duster, cloth, sponge, vacuum cleaner, or compressed air. Do not scrub. Do not use solvents or any abrasive substance which might damage the coating of the fabric. For minor stains clean with a soft cloth, sponge, or soft brush dipped in lukewarm soapy water using mild detergent. Rinse with clean water. Leave the blind down until completely dry. For tougher stains and disinfecting instructions visit www.MermetUSA.com.

5970 N. Main Street • Cowpens, SC 29330
 Sales Department: Ph (866) 902-9647
info@MermetUSA.com

