



STYLE  
2701 / 2703 / 2705 / 2710

---

WEAVING  
EXCELLENCE  
WITH  
INNOVATION



Code	Color	SOLAR OPTICAL PROPERTIES				SHGC/G VALUE g-tot (glass & blind)		SOLAR OPTICAL PROPERTIES				SHGC/G VALUE g-tot (glass & blind)	
		TS	RS	AS	TV	SINGLE 1/4 CL	INSULATING 1 HA	TS	RS	AS	TV	SINGLE 1/4 CL	INSULATING 1 HA
<b>STYLE 2701 FACE - 1%</b>						<b>STYLE 2701 BACK</b>							
P12	Oyster	19	69	12	19	0.32	0.25	19	70	11	18	0.32	0.24
P13	Oyster/Beige	15	55	30	13	0.40	0.29	15	62	23	12	0.36	0.26
P14	Oyster/Pearl Gray	11	38	51	9	0.50	0.33	10	54	36	9	0.40	0.28
P28	Oyster/Charcoal	6	11	83	6	0.66	0.41	5	42	53	5	0.46	0.32
P91	Oyster/Pewter	6	22	72	5	0.59	0.38	6	48	46	5	0.43	0.30
P92	Oyster/Chestnut	7	16	77	5	0.63	0.39	6	45	49	5	0.44	0.31
V21	Charcoal	3	4	93	3	0.69	0.43	3	4	93	3	0.69	0.43
V22	Charcoal/Gray	3	14	83	3	0.63	0.40	3	6	91	3	0.68	0.42
V64	Charcoal/Slate	4	30	66	4	0.53	0.35	4	10	86	4	0.66	0.41
V65	Charcoal/Taupe	4	25	71	3	0.56	0.36	4	9	87	3	0.67	0.41
V66	Charcoal/Brown	4	17	79	4	0.62	0.39	4	7	89	4	0.68	0.42
<b>STYLE 2703 FACE - 3%</b>						<b>STYLE 2703 BACK</b>							
P12	Oyster	22	66	12	21	0.34	0.26	21	67	12	20	0.34	0.25
P13	Oyster/Beige	21	53	26	19	0.43	0.30	20	60	20	18	0.38	0.28
P14	Oyster/Pearl Gray	15	38	47	13	0.51	0.34	14	54	32	12	0.41	0.29
P28	Oyster/Charcoal	9	12	79	9	0.66	0.41	7	42	51	7	0.47	0.32
P91	Oyster/Pewter	10	22	68	10	0.60	0.38	9	47	44	9	0.44	0.31
P92	Oyster/Chestnut	12	19	69	11	0.62	0.39	11	45	44	9	0.46	0.31
V21	Charcoal	5	4	91	5	0.70	0.43	5	4	91	5	0.70	0.43
V22	Charcoal/Gray	5	13	82	5	0.64	0.40	5	6	89	5	0.68	0.42
V64	Charcoal/Slate	7	27	66	7	0.56	0.36	7	10	83	7	0.67	0.41
V65	Charcoal/Taupe	6	24	70	6	0.58	0.37	6	8	86	6	0.67	0.42
V66	Charcoal/Brown	6	17	77	6	0.62	0.39	6	7	87	6	0.68	0.42
<b>STYLE 2705 FACE - 5%</b>						<b>STYLE 2705 BACK</b>							
P12	Oyster	25	63	12	24	0.37	0.27	26	63	11	25	0.38	0.27
P13	Oyster/Beige	22	54	24	20	0.43	0.30	21	60	19	19	0.38	0.28
P14	Oyster/Pearl Gray	18	39	43	17	0.52	0.34	17	54	29	16	0.42	0.29
P28	Oyster/Charcoal	12	14	74	12	0.65	0.41	11	43	46	11	0.47	0.32
P91	Oyster/Pewter	15	24	61	14	0.60	0.38	13	47	40	13	0.45	0.31
P92	Oyster/Chestnut	11	19	70	10	0.62	0.39	10	46	44	9	0.45	0.31
V21	Charcoal	7	4	89	7	0.70	0.43	7	4	89	7	0.70	0.43
V22	Charcoal/Gray	8	6	86	8	0.69	0.43	8	12	80	8	0.65	0.41
V64	Charcoal/Slate	9	25	66	8	0.58	0.37	9	9	82	8	0.68	0.42
V65	Charcoal/Taupe	9	21	70	8	0.60	0.38	9	8	83	8	0.68	0.42
V66	Charcoal/Brown	9	16	75	8	0.64	0.40	9	7	84	8	0.69	0.42
<b>STYLE 2710 FACE - 10%</b>						<b>STYLE 2710 BACK</b>							
P12	Oyster	31	59	10	30	0.41	0.29	30	59	11	29	0.41	0.29
P13	Oyster/Beige	30	51	19	29	0.47	0.31	30	56	14	28	0.43	0.30
P14	Oyster/Pearl Gray	27	41	32	25	0.45	0.29	25	51	24	23	0.39	0.27
P28	Oyster/Charcoal	19	21	60	18	0.63	0.39	17	45	38	17	0.47	0.32
P91	Oyster/Pewter	22	28	50	21	0.59	0.37	21	47	32	20	0.47	0.32
P92	Oyster/Chestnut	22	25	53	20	0.61	0.38	21	45	34	19	0.48	0.32
V21	Charcoal	15	4	81	15	0.72	0.44	15	3	82	15	0.72	0.44
V22	Charcoal/Gray	15	10	75	14	0.68	0.42	15	5	80	14	0.71	0.43
V64	Charcoal/Slate	15	16	69	15	0.65	0.40	15	7	78	15	0.70	0.43
V65	Charcoal/Taupe	15	17	68	14	0.64	0.40	15	7	78	14	0.70	0.43
V66	Charcoal/Brown	14	12	74	14	0.67	0.41	14	6	80	14	0.71	0.43

TS = Solar Transmittance | RS = Solar Reflectance | AS = Solar Absorptance | TV = Visual Transmittance | SHGC = Solar Heat Gain Coefficient  
1/4 CL = 1/4" Clear Glass | 1 HA = 1" Heat Absorbing Glass | Fabrics Installed Internally | Zero-Degree Profile Angle  
For additional performance values, test references and technical definitions visit us at [phifer.com](http://phifer.com).

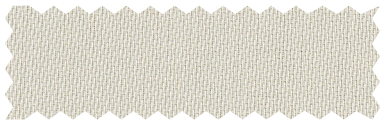
P12 Oyster



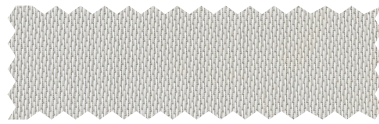
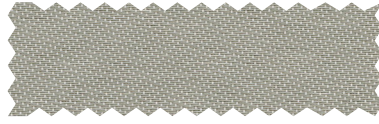
V21 Charcoal



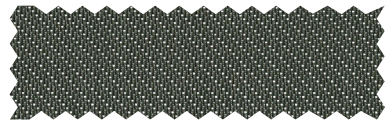
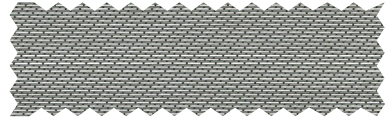
P13 Oyster / Beige - face  
Oyster / Beige - back



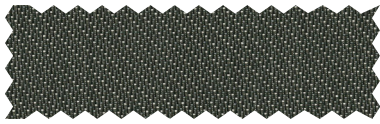
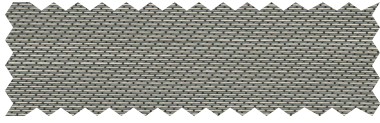
P14 Oyster / Pearl Gray - face  
Oyster / Pearl Gray - back



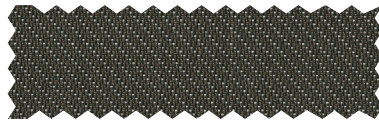
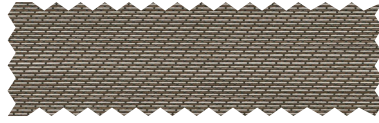
V64 Charcoal / Slate - face  
Charcoal / Slate - back



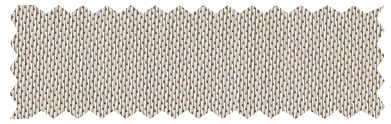
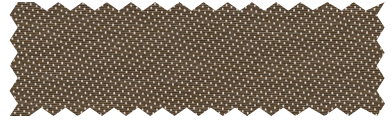
V65 Charcoal / Taupe - face  
Charcoal / Taupe - back



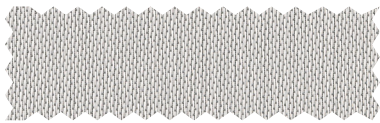
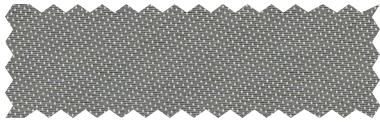
V66 Charcoal / Brown - face  
Charcoal / Brown - back



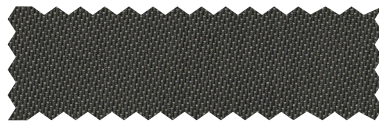
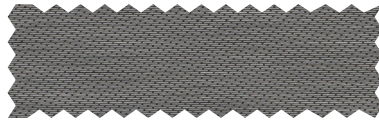
P92 Oyster / Chestnut - face  
Oyster / Chestnut - back



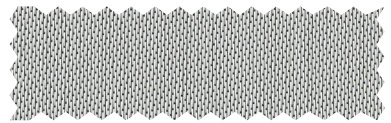
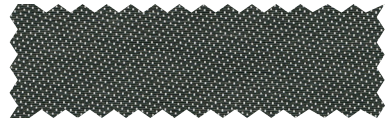
P91 Oyster / Pewter - face  
Oyster / Pewter - back



V22 Charcoal / Gray - face  
Charcoal / Gray - back



P28 Oyster / Charcoal - face  
Oyster / Charcoal - back



PROTECTION THAT LIVES ON  
**MICROBAN**

Microban® antimicrobial protection inhibits the growth of stain-causing bacteria, mold and mildew on the shade.





# STYLE 2701 / 2703 / 2705 / 2710 SPECIFICATIONS

Styles 2701, 2703, 2705 and 2710 are woven from a unique twill pattern that displaces the individual yarns to create a two-sided fabric for maximum performance in heat reduction, glare reduction and improved visibility. Styles 2701, 2703, 2705 and 2710 can also be used in exterior roller shades.

**FIRE CLASSIFICATION** NFPA 701 TM#1 (small scale) BS 5867 Part 2 Type B Performance  
 NFPA 701 TM#2 (large scale) CAN/ULC-S 109 (large and small scale)  
 NFPA 101 (Class A Rating) CAN/CGSB2-4.162-M80  
 California U.S. Title 19 (small scale) IBC Section 803.1.1 (Class A Rating)  
*Fire classifications are subject to change. Please go to [phifer.com](http://phifer.com) for the most current information.*

**BACTERIA AND FUNGAL RESISTANCE** ASTM E 2180 ASTM G21 ASTM G22 AATCC30 Part 3 ASTM D 3273  
 GREENGUARD Mold and Bacteria Standard ASTM 6329  
 Includes Microban antimicrobial additives

**ENVIRONMENTAL CERTIFICATION** GREENGUARD GREENGUARD Gold  
 Certified to these standards for low chemical emissions into indoor air during product usage

**SAFE USE** ANSI/WCMA A 100.1-2007 for lead content US Consumer Product Safety Commission Section 101  
 RoHS Compliant REACH Compliant

**WARRANTY** 10-year interior 5-year exterior

**ACOUSTICAL PERFORMANCE** NRC (Noise Reduction Coefficient) and SAA (Sound Absorption Average) tested in accordance with ASTM C423-09a

**UV PROTECTION** SheerWeave sun control fabrics are an effective way to reduce harmful UV rays. Phifer Incorporated is a proud member of the Skin Cancer Foundation's Corporate Council.

**TRACKLESS** TrackLess Technology minimizes the fiberglass yarns' inherent tendencies to track when being rolled up in a shade. With TrackLess Technology these same fabrics now track less, roll up straighter and reduce shade fabrication time.

STYLE	2701	2703	2705	2710
<b>WIDTHS</b>	63", 98" and 126" 160 cm, 248.9 cm and 320 cm	63", 98" and 126" 160 cm, 248.9 cm and 320 cm	63", 98" and 126" 160 cm, 248.9 cm and 320 cm	63" and 98" 160 cm and 248.9 cm
<b>ROLL LENGTH</b>	30 Linear Yards 27.4 Linear Meters	30 Linear Yards 27.4 Linear Meters	30 Linear Yards 27.4 Linear Meters	30 Linear Yards 27.4 Linear Meters
<b>COMPOSITION</b>	36% Fiberglass 64% Vinyl on Fiberglass	36% Fiberglass 64% Vinyl on Fiberglass	34% Fiberglass 66% Vinyl on Fiberglass	34% Fiberglass 66% Vinyl on Fiberglass
<b>MESH WEIGHT</b>	14.6 oz/yd <sup>2</sup> 495 g/m <sup>2</sup>	14.0 oz/yd <sup>2</sup> 475 g/m <sup>2</sup>	11.8 oz/yd <sup>2</sup> 379 g/m <sup>2</sup>	10.4 oz/yd <sup>2</sup> 353 g/m <sup>2</sup>
<b>FABRIC THICKNESS</b>	0.027 in 0.66 mm	0.028 in 0.71 mm	0.025 in 0.64 mm	0.023 in 0.58 mm
<b>OPENNESS FACTOR</b>	Approximately 1%	Approximately 3%	Approximately 5%	Approximately 10%
<b>UV BLOCKAGE</b>	Approximately 99%	Approximately 97%	Approximately 95%	Approximately 90%
<b>ACOUSTICAL VALUE</b>	NRC .15 / SAA .15	NRC .10 / SAA .09	NRC .05 / SAA .06	NRC .05 / SAA .05

**PHIFER**  
 INCORPORATED

P. O. Box 1700 • Tuscaloosa, Alabama 35403-1700 USA  
 Phone: 205.345.2120 • FAX: 205.391.0799  
 Toll Free USA/Canada: 1.800.221.5497  
[phifer.com](http://phifer.com) • ISO Registered



© SheerWeave is a registered trademark of PHIFER INCORPORATED.  
 © MICROBAN is a registered trademark of Microban Products Company.  
 ™ UL, the UL logos and the UL mark are trademarks of UL LLC.  
 Photo courtesy of DRAPER INC., Spiceland, Indiana, USA.  
 © PHIFER INCORPORATED V23 120523 3033833