



STYLE  
4001 / 4400 / 4000 / 4100  
with DOW ECOLIBRIUM™  
Bio-based Plasticizer

---

WEAVING  
EXCELLENCE  
WITH  
INNOVATION



## The DOW ECOLIBRIUM Value Proposition:

DOW ECOLIBRIUM™ Bio-Based Plasticizers offer a renewable alternative that is phthalate-free, offering a more sustainable option while having the same great performance and feel of current materials.

- Lowers greenhouse gas emissions as much as 40% vs. existing PVC compounds
- 98% of the plasticizer is derived from non fossil fuel based feed stock
- Phthalate-free
- Lower carbon footprint\*
- LEED credits for rapidly renewable content may be available\*\*
- RoHS compliant
- Ability for compound to be recycled in a standard vinyl stream

- Maintains all of the established benefits of traditional vinyl such as durability, cleanability and fabric longevity

\*Based on Lifecycle Analysis (LCA) conducted by The Dow Chemical Company and third party reviewed.

\*\*See website [www.usgbc.org](http://www.usgbc.org) for more information.

		SOLAR OPTICAL PROPERTIES				SHGC/G VALUE g-tot (glass & blind)	
Code	Color	TS	RS	AS	TV	SINGLE 1/4 CL	INSULATING 1 HA
STYLE 4001 - 1%							
U58	Eco/Chalk	7	83	10	4	0.18	0.17
U59	Eco/Alabaster	4	65	31	2	0.27	0.21
U60	Eco/Pebblestone	2	51	47	2	0.35	0.25
U61	Eco/Greystone	2	38	60	1	0.41	0.28
U62	Eco/Granite	3	51	46	2	0.35	0.25
U63	Eco/Pewter	2	33	65	2	0.44	0.30
U64	Eco/Ash	2	14	84	2	0.55	0.34
U65	Eco/Ebony	1	4	95	1	0.60	0.37
U66	Eco/Tobacco	1	4	95	1	0.60	0.37
STYLE 4400 - 3%							
U58	Eco/Chalk	10	79	11	7	0.20	0.18
U59	Eco/Alabaster	7	65	28	5	0.27	0.21
U60	Eco/Pebblestone	4	49	47	4	0.36	0.26
U61	Eco/Greystone	4	40	56	3	0.41	0.28
U62	Eco/Granite	6	55	39	5	0.33	0.24
U63	Eco/Pewter	4	32	64	4	0.46	0.30
U64	Eco/Ash	3	12	85	3	0.56	0.35
U65	Eco/Ebony	3	4	93	3	0.60	0.37
U66	Eco/Tobacco	3	5	92	3	0.60	0.37
STYLE 4000 - 5%							
U58	Eco/Chalk	14	77	9	11	0.23	0.19
U59	Eco/Alabaster	6	66	28	4	0.27	0.21
U60	Eco/Pebblestone	8	48	44	8	0.38	0.26
U61	Eco/Greystone	8	38	54	8	0.43	0.29
U62	Eco/Granite	9	51	40	9	0.36	0.26
U63	Eco/Pewter	8	31	61	7	0.47	0.31
U64	Eco/Ash	6	13	81	6	0.56	0.35
U65	Eco/Ebony	7	4	89	8	0.61	0.38
U66	Eco/Tobacco	6	6	88	6	0.60	0.37
STYLE 4100 - 10%							
U58	Eco/Chalk	17	74	9	14	0.25	0.20
U59	Eco/Alabaster	15	61	24	13	0.32	0.23
U60	Eco/Pebblestone	12	46	42	12	0.39	0.27
U61	Eco/Greystone	12	36	52	11	0.45	0.29
U62	Eco/Granite	14	52	34	13	0.37	0.26
U63	Eco/Pewter	11	29	60	11	0.49	0.31
U64	Eco/Ash	11	12	77	11	0.58	0.36
U65	Eco/Ebony	10	4	86	10	0.62	0.38
U66	Eco/Tobacco	12	5	83	12	0.61	0.38

MADE WITH **ecolibrium™**  
BIO BASED PLASTICIZERS

PROTECTION THAT LIVES ON  
**MICROBAN®**

Microban® antimicrobial protection inhibits the growth of stain-causing bacteria, mold and mildew on the shade.



PRODUCT CERTIFIED FOR  
LOW CHEMICAL EMISSIONS  
[UL.COM/GG](http://UL.COM/GG)  
UL 2818

DOW ECOLIBRIUM™ is a



**BEST ENERGY EFFICIENT SOLUTION**



TS = Solar Transmittance  
RS = Solar Reflectance  
AS = Solar Absorptance  
TV = Visual Transmittance

SHGC = Solar Heat Gain Coefficient

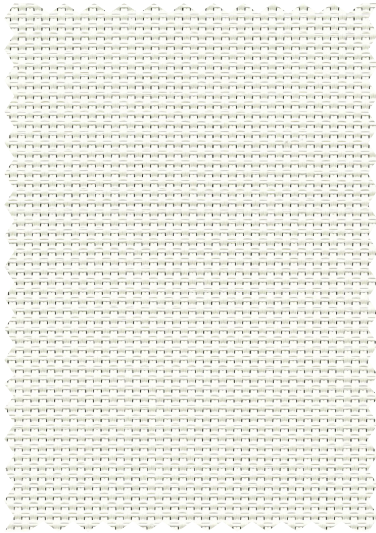
1/4 CL = 1/4" Clear Glass  
1 HA = 1" Heat Absorbing Glass

Fabrics Installed Internally  
Zero-Degree Profile Angle

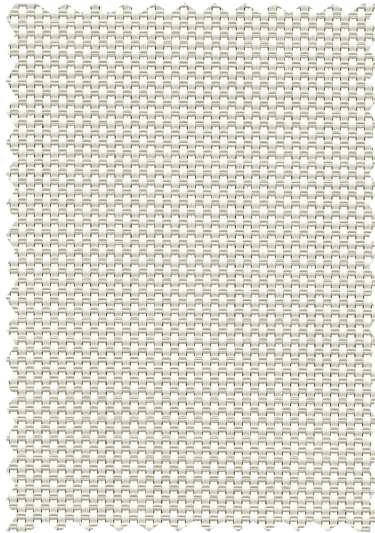
For additional performance values,  
test references and technical  
definitions visit us at [phifer.com](http://phifer.com).



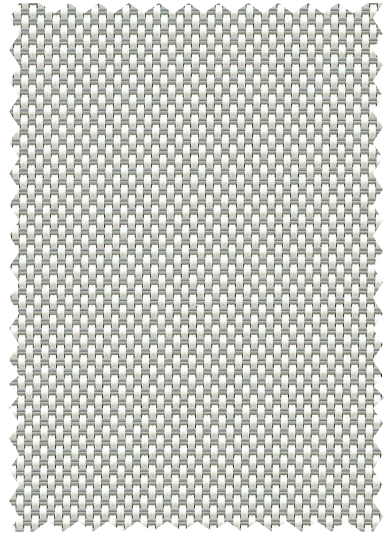
U58 **Eco / Chalk**



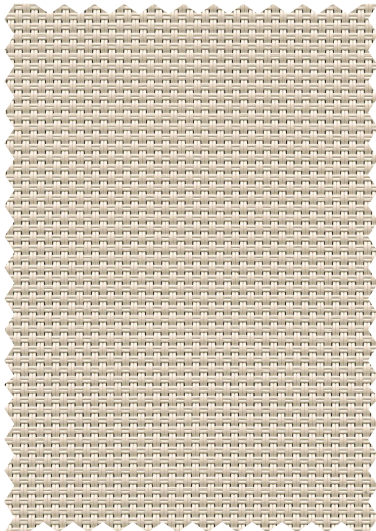
U59 **Eco / Alabaster**



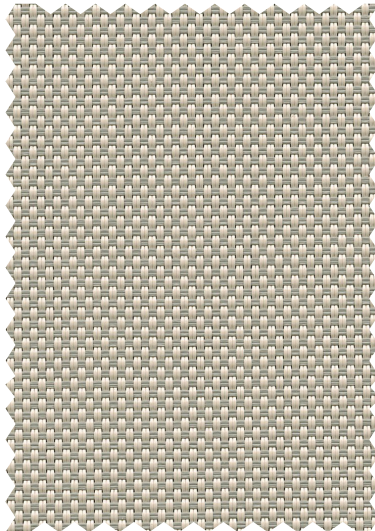
U62 **Eco / Granite**



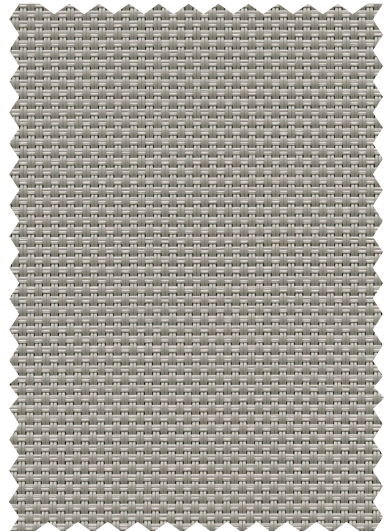
U60 **Eco / Pebblestone**



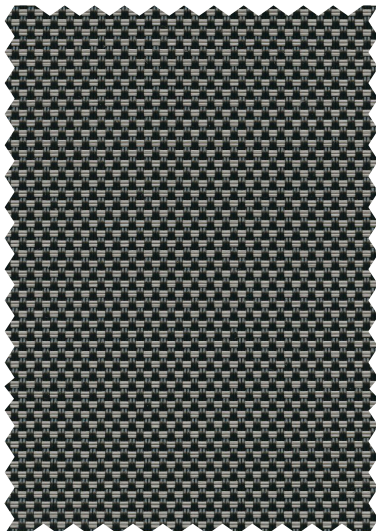
U61 **Eco / Greystone**



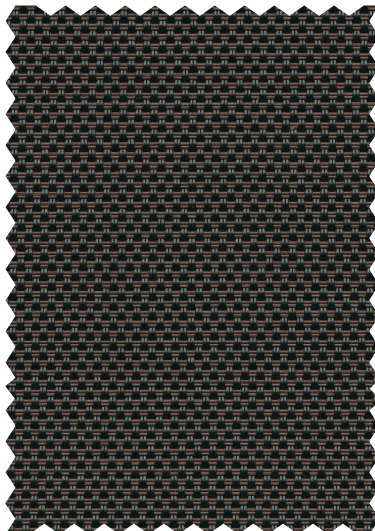
U63 **Eco / Pewter**



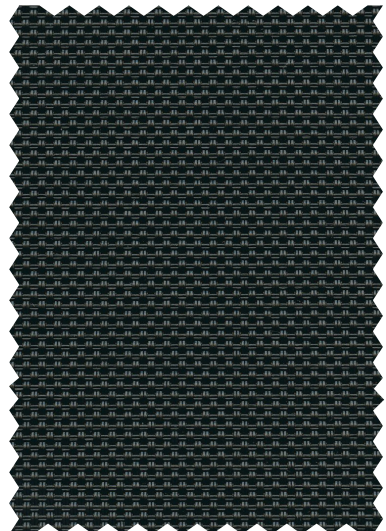
U64 **Eco / Ash**



U66 **Eco / Tobacco**



U65 **Eco / Ebony**





# STYLE 4001 / 4400 / 4000 / 4100 / SPECIFICATIONS

As the only sun control fabrics in the market to use DOW's unique ECOLIBRIUM bio-based plasticizer, Styles 4001, 4400, 4000 and 4100 combine the durability of vinyl coated polyester with the latest in green PVC technology. ECOLIBRIUM is a renewable alternative to traditional plasticizers that lowers greenhouse gas emissions as much as 40% vs existing PVC compounds. Styles 4001, 4400, 4000 and 4100 with DOW ECOLIBRIUM are phthalate-free, lead-free and RoHS compliant. These fabrics maintain all of the established benefits of traditional vinyl such as durability, cleanability and fabric longevity. Styles 4001, 4400, 4000 and 4100 can also be used in exterior shading systems.

FIRE CLASSIFICATION	California U.S. Title 19 (small scale)		CAN/CGSB2-4.162-M80		
	NFPA 701 TM#1 (small scale)		BS 5867 Part 2 Type B Performance		
	NFPA 701 TM#2 (large scale)		IBC Section 803.1.1 (Class A Rating)		
	NFPA 101 (Class A Rating)		CAN/ULC-S 109 (Style 4001 small scale)		
Fire classifications are subject to change. Please go to <a href="http://phifer.com">phifer.com</a> for the most current information.					
BACTERIA AND FUNGAL RESISTANCE	ASTM E 2180	ASTM G21	ASTM G22	AATCC30 Part 3	ASTM D 3273
	GREENGUARD Mold and Bacteria Standard ASTM 6329				
	Includes Microban antimicrobial additives				
ENVIRONMENTAL CERTIFICATION	GREENGUARD	GREENGUARD Gold			
	Certified to these standards for low chemical emissions into indoor air during product usage				
	DOW ECOLIBRIUM Plasticizer is a USDA Certified Bio-Based Product				
SAFE USE	RoHS Compliant			REACH Compliant	
	ANSI/WCMA A 100.1-2007 for lead content			US Consumer Product Safety Commission Section 101	
WARRANTY	10-year interior	5-year exterior			
ACOUSTICAL PERFORMANCE	NRC (Noise Reduction Coefficient) and SAA (Sound Absorption Average) tested in accordance with ASTM C423-09a				
UV PROTECTION	SheerWeave sun control fabrics are an effective way to reduce harmful UV rays. Phifer Incorporated is a proud member of the Skin Cancer Foundation's Corporate Council.				

STYLE	4001	4400	4000	4100
<b>WIDTHS</b>	63", 98" and 126" 160 cm, 248.9 cm and 320 cm	63", 84", 98" and 126" 160 cm, 213.4 cm, 248.9 cm and 320 cm	63", 84", 98" and 126" 160 cm, 213.4 cm, 248.9 cm and 320 cm	63", 84" and 98" 160 cm, 213.4 cm and 248.9 cm
<b>ROLL LENGTH</b>	30 Linear Yards 27.4 Linear Meters	30 Linear Yards 27.4 Linear Meters	30 Linear Yards 27.4 Linear Meters	30 Linear Yards 27.4 Linear Meters
<b>COMPOSITION</b>	25% Polyester 75% Vinyl on Polyester	25% Polyester 75% Vinyl on Polyester	25% Polyester 75% Vinyl on Polyester	25% Polyester 75% Vinyl on Polyester
	(Over 50% of compound components are derived from crop-based feed stocks and minerals. Over 2/3 of total compound is derived from non fossil fuel based materials.)			
<b>MESH WEIGHT</b>	21.3 oz/yd <sup>2</sup> 722 g/m <sup>2</sup>	19.9 oz/yd <sup>2</sup> 675 g/m <sup>2</sup>	18.0 oz/yd <sup>2</sup> 610 g/m <sup>2</sup>	16.7 oz/yd <sup>2</sup> 566 g/m <sup>2</sup>
<b>FABRIC THICKNESS</b>	0.033 in 0.84 mm	0.034 in 0.86 mm	0.032 in 0.81 mm	0.032 in 0.81 mm
<b>OPENNESS FACTOR</b>	Approximately 1%	Approximately 3%	Approximately 5%	Approximately 10%
<b>UV BLOCKAGE</b>	Approximately 99%	Approximately 97%	Approximately 95%	Approximately 90%
<b>ACOUSTICAL VALUE</b>	NRC .55 / SAA .55	NRC .20 / SAA .19	NRC .10 / SAA .11	NRC .05 / SAA .05

**PHIFER**  
INCORPORATED

P. O. Box 1700 • Tuscaloosa, Alabama 35403-1700 USA  
Phone: 205.345.2120 • FAX: 205.391.0799  
Toll Free USA/Canada: 1.800.221.5497  
[phifer.com](http://phifer.com) • ISO Registered



© SheerWeave is a registered trademark of PHIFER INCORPORATED.  
© TM ECOLIBRIUM and the DOW Diamond are trademarks of  
The Dow Chemical Company ("Dow") or an affiliated company of Dow.  
© MICROBAN is a registered trademark of Microban Products Company.  
™ UL, the UL logos and the UL mark are trademarks of UL LLC.  
Photo courtesy of Terza, México.  
© PHIFER INCORPORATED V24 052224 3033834