



STYLE
7100
BLACKOUT FABRIC

WEAVING
EXCELLENCE
WITH
INNOVATION



		SOLAR OPTICAL PROPERTIES				SHGC/G VALUE g-tot (glass & blind)	
Code	Color	TS	RS	AS	TV	SINGLE 1/4 CL	INSULATING 1 HA
STYLE 7100 - BLACKOUT							
P12	Oyster	0	71	29	0	0.23	0.19
V21	Charcoal	0	71	29	0	0.23	0.19



PROTECTION THAT LIVES ON
MICROBAN®
 Microban® antimicrobial protection inhibits the growth of stain-causing bacteria, mold and mildew on the shade.



PRODUCT CERTIFIED FOR
 LOW CHEMICAL EMISSIONS
 UL.COM/GG
 UL 2818



**BEST ENERGY
 EFFICIENT
 SOLUTION**



TS = Solar Transmittance
 RS = Solar Reflectance
 AS = Solar Absorptance
 TV = Visual Transmittance

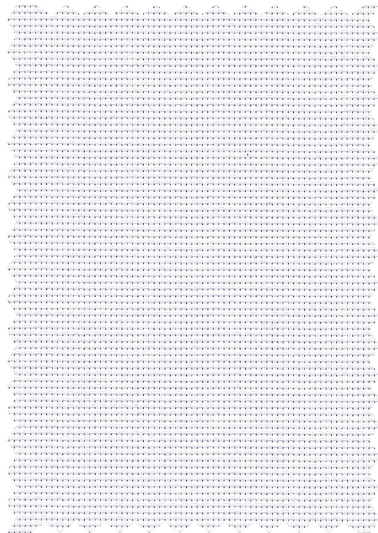
SHGC = Solar Heat Gain Coefficient

1/4 CL = 1/4" Clear Glass
 1 HA = 1" Heat Absorbing Glass

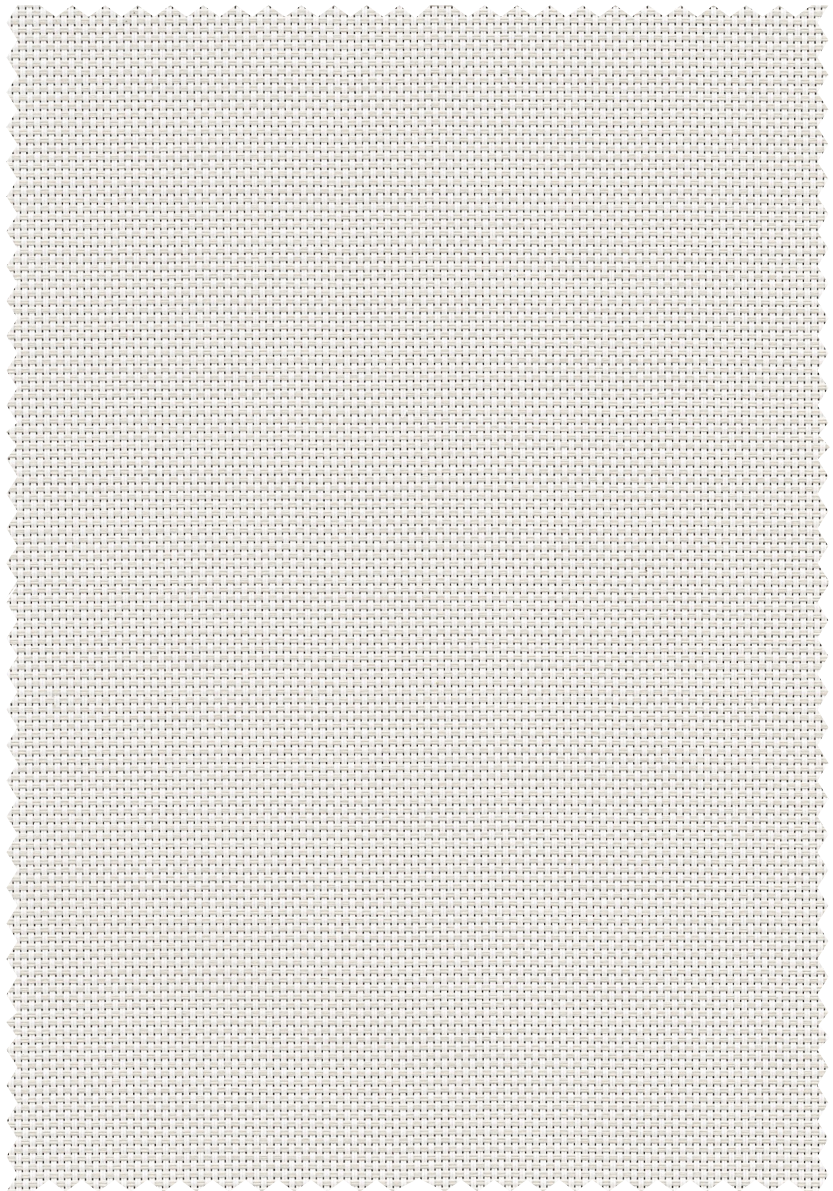
Fabrics Installed Internally
 Zero-Degree Profile Angle

For additional performance values, test references and technical definitions visit us at phifer.com.

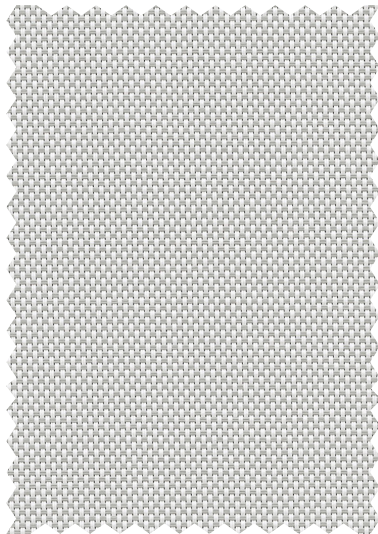
P12 Oyster



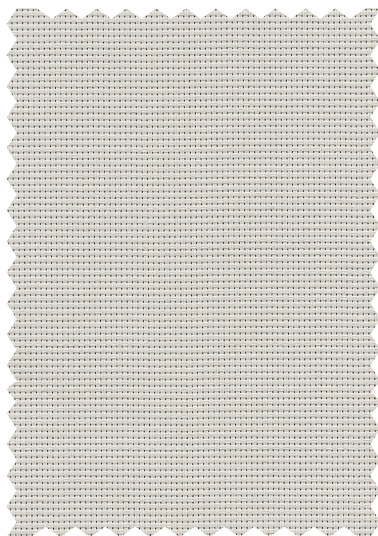
P13 Oyster/Beige



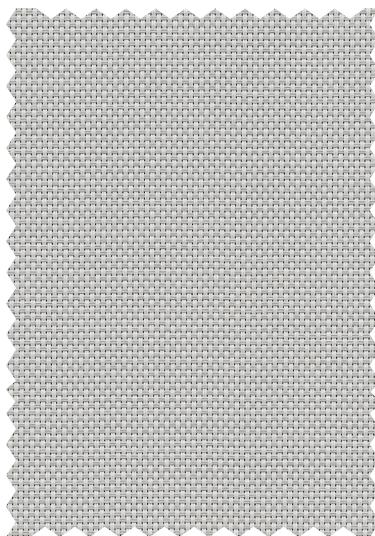
P14 Oyster/Pearl Gray



Q20 Beige



Q21 Beige/Pearl Gray



V21 Charcoal



STYLE 7100 SPECIFICATIONS

Style 7100 is a durable laminated blackout fabric that combines the woven texture of our Style 2390 as the face fabric with a durable vinyl backing to achieve total light blockage. Style 7100 coordinates easily with other SheerWeave fabrics when multi-purpose shades are needed. All Style 7100 colors have a white backing.

FIRE CLASSIFICATION	California U.S. Title 19 (small scale)	California Technical Bulletin 117
	NFPA 701 TM#1 (small scale)	IBC Section 803.1.1 (Class A Rating)
	NFPA 701 TM#2 (large scale)	BS 5867 Part 2 Type B Performance
	NFPA 101 (Class A Rating)	CAN/ULC-S 109 (large and small scale)

Fire classifications are subject to change. Please go to phifer.com for the most current information.

BACTERIA AND FUNGAL RESISTANCE	ASTM E 2180	ASTM G21	ASTM D 3273	ASTMG22
	GREENGUARD Mold and Bacteria Standard ASTM 6329			
	Style 2000 face includes Microban antimicrobial additives.			
ENVIRONMENTAL CERTIFICATION	GREENGUARD	GREENGUARD Gold		
	Certified to these standards for low chemical emissions into indoor air during product usage			
SAFE USE	RoHS Compliant	REACH Compliant		
	ANSI/WCMA A 100.1-2007 for lead content	US Consumer Product Safety Commission Section 101		
WARRANTY	10-year interior			
ACOUSTICAL PERFORMANCE	NRC (Noise Reduction Coefficient) and SAA (Sound Absorption Average) tested in accordance with ASTM C423-09a			
UV PROTECTION	SheerWeave sun control fabrics are an effective way to reduce harmful UV rays. Phifer Incorporated is a proud member of the Skin Cancer Foundation's Corporate Council.			
TRACKLESS	TrackLess Technology minimizes the fiberglass yarns' inherent tendencies to track when being rolled up in a shade. With TrackLess Technology these same fabrics now track less, roll up straighter and reduce shade fabrication time.			

Due to the construction of Style 7100, some cupping may occur. To avoid any cupping the use of side channels is recommended. Railroaded this fabric is not recommended.

STYLE 7100

WIDTHS	63" and 96" 160 cm and 243.8 cm
ROLL LENGTH	30 Linear Yards 27.4 Linear Meters
COMPOSITION	37% Fiberglass, 63% Vinyl on Fiberglass Laminated with a two-ply 100% PVC blackout film
MESH WEIGHT	19.4 oz/yd ² 658 g/m ²
FABRIC THICKNESS	0.023 in 0.58 mm
OPENNESS FACTOR	Opaque
ACOUSTICAL VALUE	NRC .05 / SAA .03

PHIFER
INCORPORATED

P. O. Box 1700 • Tuscaloosa, Alabama 35403-1700 USA
Phone: 205.345.2120 • FAX: 205.391.0799
Toll Free USA/Canada: 1.800.221.5497
phifer.com • ISO Registered



© SheerWeave is a registered trademark of PHIFER INCORPORATED.
® MICROBAN is a registered trademark of Microban Products Company.
™ UL, the UL logos and the UL mark are trademarks of UL LLC.
Photo courtesy of Rielamericano, Buenos Aires, Argentina.
© PHIFER INCORPORATED V25 022125 3033843