

## **CHSRA D4 Hosted Light Rifle Competition (2 round double shoot)**

### **Open to CHSRA members**

Date 12/6/2025

Check-in 09:00

Shoot Time approximately 9:30

### **Range information:**

Astoria Shooting Range

31500 San Vicente Rd,

Soledad CA. 93960

Astoriarange.com

### **Competition:**

-NHRSA Light Rifle 50 yard 3-position (Prone, Kneeling, Standing) -\$45 Entry Fee

-Open to the first 30 entrants. After capacity is met entrants will be added to a waitlist.

### **Rules to know before you compete.**

#### **Rifles:**

-Any .22 caliber rimfire .22 short, .22 long, or .22 long rifle

-With not less than a 2-pound trigger pull,

-Which weighs not more than 8 1/2 pounds when equipped with sights.

-Telescopic sights must be set at 10 power or less.

-No portion of the rifle or any attachment to the rifle shall extend more than 3 inches beyond the rear of the shooter's shoulder.

#### **Ammunition:**

-Rimfire cartridges are commercially cataloged as the ".22 Short, .22 Long, or .22 Long rifle" -Which have an over-all length not more than 1.1 inches and loaded with a lead or alloy bullet of not larger than .23-inch diameter.

-Hollow point, tracer, incendiary or explosive bullets are specifically excluded from ammunition authorized for match use.

-Maximum 41 rounds per match

#### **Required Equipment:**

-Eye protection

-Ear protection (no electronic hearing protection)

#### **Optional Equipment:**

-Shooting bag

-Shooting mat

-Kneeling roll

-Gloves-Gloves may be worn which do not form an artificial support -Shoulder pads, sling pads and elbow pads may be worn while shooting, provided they are constructed so as not to provide artificial support

#### **Check in procedure:**

-**NO RED shirts, coats, jackets, etc** (only range staff wear red )

-Fill out and sign release forms, for parents(Appendix B) and for minors(Appendix C)

-Check in at front office

- Proceed to assigned range area
- Insure rifle is unloaded, magazine out, in an appropriate case
  - Rifle check in at assigned shooting bay (Rifle is weighed, trigger tested, flagged and placed on rack)
  - Shooter will be assigned group and lane number (Example: Group 2, Lane 4)
  - Competitors that are participating in the evening rodeo will be shooting first groups

### **Safety Briefing:**

- Introduction/Range information
  - Safe gun handling
- **Always** keep the firearm pointed in a safe direction
  - **Always** keep your finger off the trigger and outside the trigger guard until you are instructed to shoot
  - **Always** keep your firearm unloaded until instructed to load/shoot
  - Know your target and what is beyond it
  - Be familiar with the safe operation of your firearm
  - Always use the correct ammunition for your firearm
  - Unattended firearms should not be accessible to unauthorized persons
- Insure all participants have mandatory safety equipment
- Range Commands
- Emergency procedures
  - Malfunction or Misfire procedures
- Course of Fire

### **NHSRA Shooting Rules and Information:**

<https://nhsra.com/wp-content/uploads/2022/02/2021-2022-Shooting-Sports-Guide.pdf>

### **CHSRA District 4 Shooting Event Coordinator:**

Marc Silva

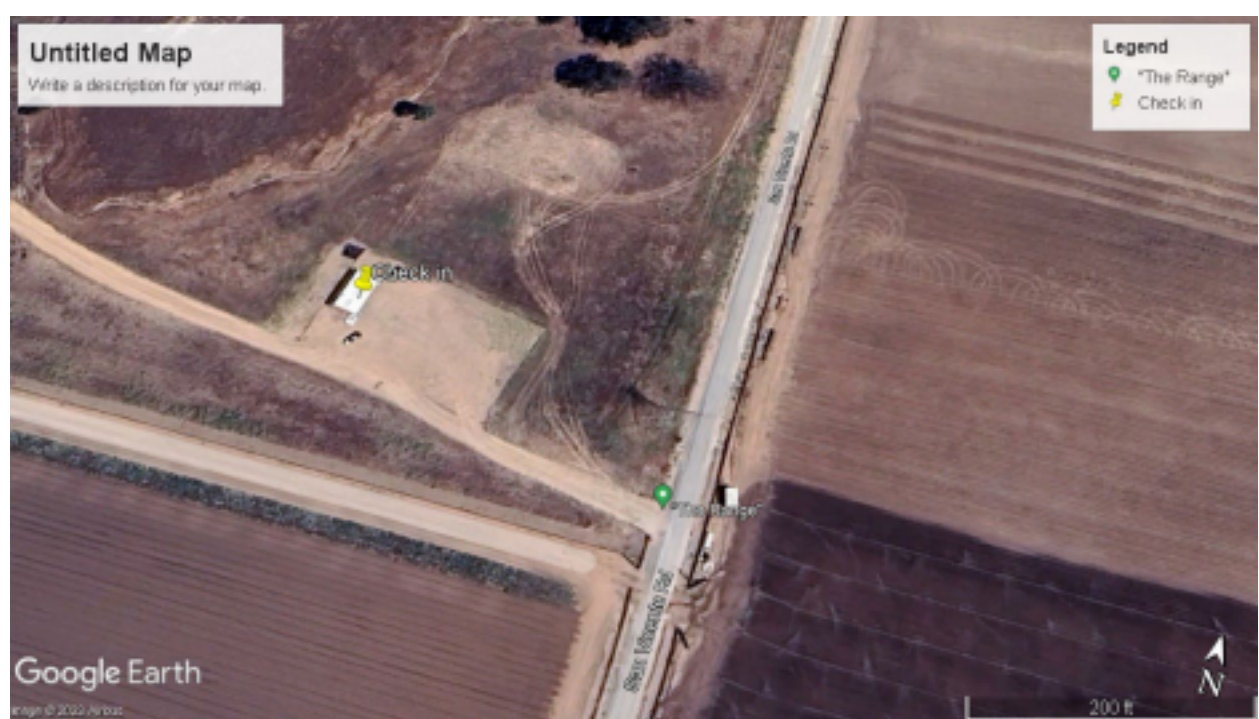
831-595-8836

msilvamc1@gmail.com



Untitled Map  
Write a description for your map.

- Legend
- "The Range"
  - Check in



Google Earth  
Image © 2022, Airbus