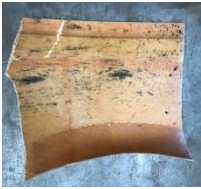




The following are instructions for Racebond Part #8888-JL. If smaller repair is needed, you may need to purchase Racebond Part #8008-JL.

**Instructions for Reinforcing/Repairing Cracks/Filling in Large Holes:**



1. Sand/Clean 1/2" On Both Sides of The Crack/Hole



2. Cut Enclosed Cloth to 1" Wider Than Crack/Hole



3. Align Crack and Place Cloth over it 1/2" on Both Sides



4. Apply Adhesive (part 1) to Entire Cloth and Crack/ Hole until Level



5. Spray Accelerator (part 2) to Cloth/ Adhesive Area & Hold for 1 Minute



6. Repeat Process to Opposite Side of Crack if Necessarily (No Cloth/Finish Side)

To fill in larger gaps apply adhesive (part 1) in layers until same level as panel. You can sand Racebond once it's dry (wait at least 5 minutes before sanding) with 180-220 grit sandpaper. Racebond can be painted after sanding. **Refrigerate after opening.**

**WARNING:** Contains Cyanoacrylates Ester, a Skin and Eye Irritant. Harmful if Swallowed. Keep Out of Reach of Children. Use Adequate Ventilation.

**FIRST AID TREATMENT:** In Case of Contact Flush Eyes and Wash Skin for 15 Minutes. If Bonded Skin Occurs, Soak with Acetone to Release. If Swallowed Contact Poison Control or Medical Attention Immediately.

**Possible Additional Items Needed for Repairs: Rubber Gloves, Sanding Block, 80-220 Grit Sandpaper and a Surface Cleaning Agent.**

Manufactured and distributed by HMS North, LLC. PO Box 102 Mooresville, NC. 28115. 386-868-6955.

[www.Racebond.net](http://www.Racebond.net)

[www.hmstires.com](http://www.hmstires.com)



The following are instructions for Racebond Part #8888-JL. If smaller repair is needed, you may need to purchase Racebond Part #8008-JL.

**Instructions for Reinforcing/Repairing Cracks/Filling in Large Holes:**



1. Sand/Clean 1/2" On Both Sides of The Crack/Hole



2. Cut Enclosed Cloth to 1" Wider Than Crack/Hole



3. Align Crack and Place Cloth over it 1/2" on Both Sides



4. Apply Adhesive (part 1) to Entire Cloth and Crack/ Hole until Level



5. Spray Accelerator (part 2) to Cloth/ Adhesive Area & Hold for 1 Minute



6. Repeat Process to Opposite Side of Crack if Necessarily (No Cloth/Finish Side)

To fill in larger gaps apply adhesive (part 1) in layers until same level as panel. You can sand Racebond once it's dry (wait at least 5 minutes before sanding) with 180-220 grit sandpaper. Racebond can be painted after sanding. **Refrigerate after opening.**

**WARNING:** Contains Cyanoacrylates Ester, a Skin and Eye Irritant. Harmful if Swallowed. Keep Out of Reach of Children. Use Adequate Ventilation.

**FIRST AID TREATMENT:** In Case of Contact Flush Eyes and Wash Skin for 15 Minutes. If Bonded Skin Occurs, Soak with Acetone to Release. If Swallowed Contact Poison Control or Medical Attention Immediately.

**Possible Additional Items Needed for Repairs: Rubber Gloves, Sanding Block, 80-220 Grit Sandpaper and a Surface Cleaning Agent.**

Manufactured and distributed by HMS North, LLC. PO Box 102 Mooresville, NC. 28115. 386-868-6955.

[www.Racebond.net](http://www.Racebond.net)

[www.hmstires.com](http://www.hmstires.com)