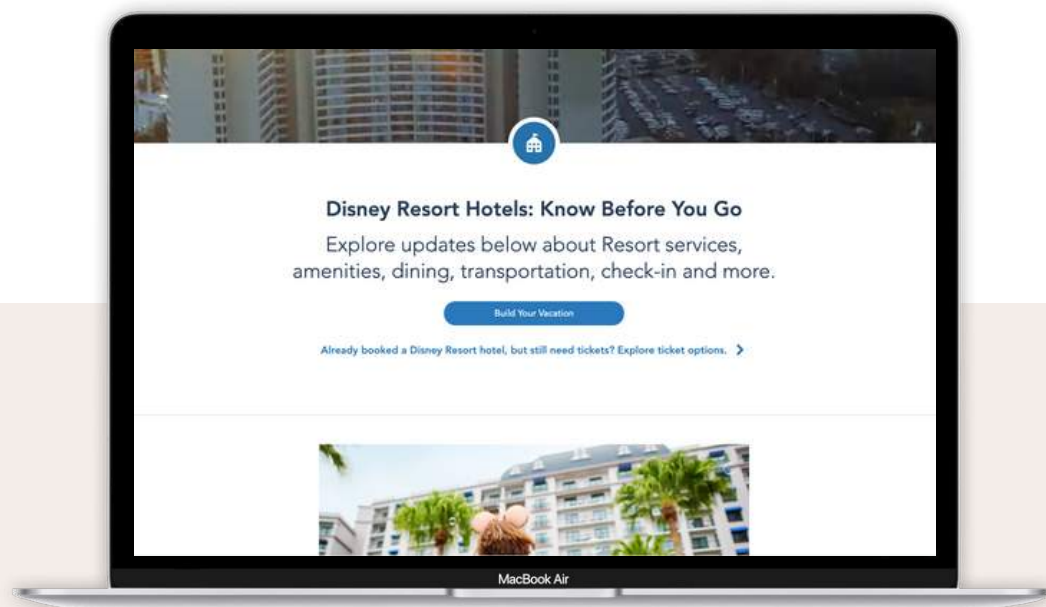


KNOW BEFORE YOU GO

Explore updates below about resort services, amenities, dining, transportation, check-in, and more.



[CLICK HERE](#)

SET UP YOUR DISNEY ACCOUNT

Your online Disney account will be your portal for planning the details of your entire trip.



Follow these steps to set up your account:

- Visit a Disney site and click "Sign In"
- Enter your birth date and then click "Continue"
- Enter the requested info, including your email address
- Check the box to agree to the "Terms of Use" and "Privacy Policy" and then click "Create Account"

A message will appear to confirm that your account has been created.

[CLICK HERE](#)

AIRPORT TRANSFER INFORMATION

What to do once you've landed



MEARS CONNECT

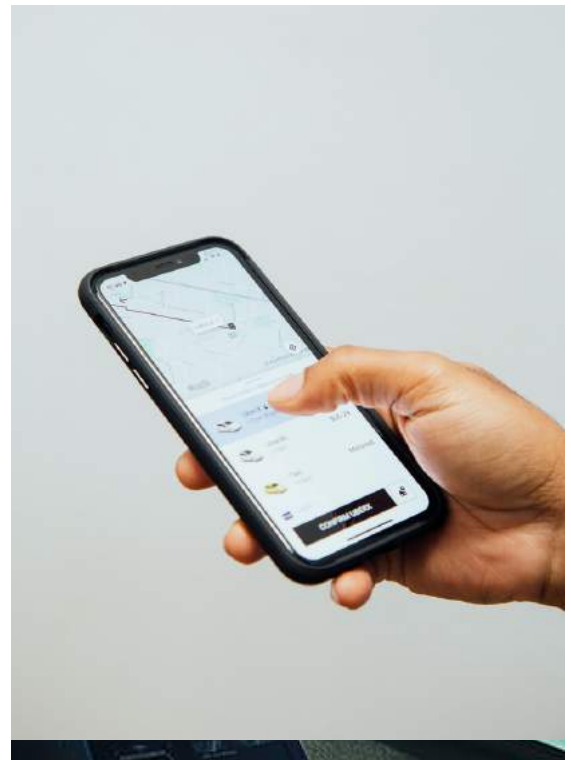
Mears Connect is the largest private ground transportation provider in Central Florida. They offer Express and Standard transfers to and from your Disney Resort

You will board Mears Connect in Terminal B, on level 1, ground transportation level, at Orlando International Airport.

RIDE SHARING

Another economical option is to consider downloading the Uber or Lyft app, and using their services to get you to and from the hotel. This will ensure a reasonably priced "private" transfer.

Look for "Ride App Pickup" signs on level 2 (baggage claim) in Terminal A or B.



Complimentary Park Transportation

How to travel to and from Disney Parks



Travel to Disney's Parks

- **Bus Transportation**

Guests of select Walt Disney World Resort hotels can take advantage of complimentary bus service to and from all 4 theme parks, Disney Resort hotels, and the Disney Springs Area.

- **Water Transportation**

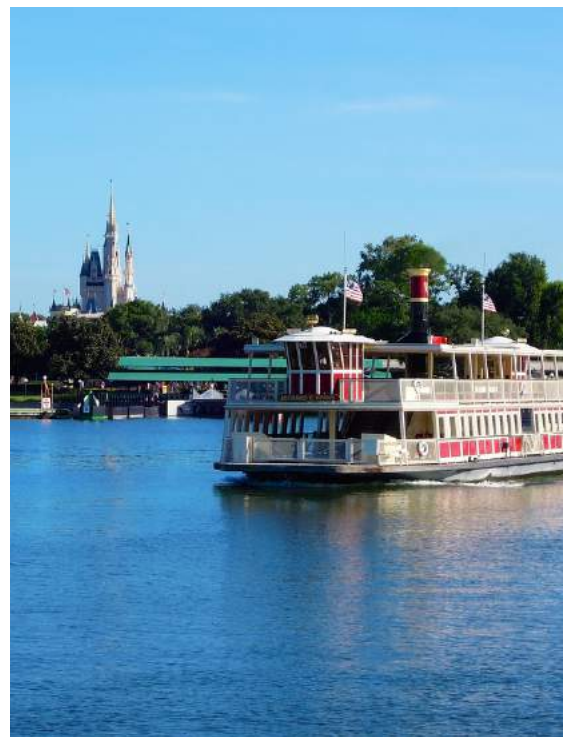
Guests of select Disney Resort hotels can enjoy complimentary boat service to and from Magic Kingdom, Disney's Hollywood Studios, Epcot, and throughout Walt Disney World Resort.

- **Monorail Transportation**

The Walt Disney World Monorail System has 3 separate beams that travel throughout Walt Disney World Resort and make the following stops: Magic Kingdom, Grand Floridian Resort, Contemporary Resort, & Polynesian Village & Villas

- **Disney Skyliner Transportation**

Glide across the sky on this grand, state-of-the-art gondola system, conveniently connecting Disney's Hollywood Studios and the International Gateway at Epcot to the following Disney Resort hotels: Art of Animation, Caribbean Beach, Pop Century, & Riviera Resorts





Rides with Fright

Proceed with Caution!

01 Expedition Everest - Animal Kingdom

This ride is themed around a Yeti protecting the Forbidden Mountain next to Mount Everest. There are scary elements including reverse travel and a large animatronic Yeti.

02 Haunted Mansion - Magic Kingdom

While this ride is fairly tame, the special effects, visual puns, and hidden monkeys may still frighten the youngest members of your family.

03 Tower of Terror - Hollywood Studios

This ride is visually intimidating to young children; containing intense and realistic special effects. The plummeting elevator at the end may also be alarming to adults

04 Mission Space - Epcot

This ride simulates Space flight. Orange Mission will experience G-forces. This ride isn't ideal for anyone who identifies as claustrophobic.

STROLLER INFORMATION

YES, YOU NEED ONE



But do I really need a stroller?

If you have children 6 years of age or younger, I recommend considering using a stroller. While most 6-year-olds have outgrown using a stroller at home, there is a lot of ground to cover in Disney. It has been documented that guests walk between 7 - 12 miles a day at Disney World. Clients never regret making this decision and investment for their trip!

Guidelines for Stroller Use:

- Strollers larger than 31" (79 cm) in width and 52" (132cm) in length are not permitted.
- Stroller wagons are also not permitted.
- Strollers are not allowed on escalators. Use of strollers is permitted on elevators and ramps, available at certain locations.
- A child must be removed from his or her stroller while riding on a parking lot tram. You will need to collapse the stroller to board the tram.
- You will NOT need to collapse the stroller to ride the Skyliner.
- Do not leave personal belongings in an unattended stroller.
- Strollers may be moved by a Cast Member due to operational needs.



STROLLERS FROM *Disney*

Strollers are available for rent at all four theme parks and Disney Springs. Strollers are also welcome at Blizzard Beach and Typhoon Lagoon but are not available for rent. Disney strollers are best suited for toddlers and 3-4 year olds, they are not suited for infants. It's important to know Disney strollers are hard plastic and do not recline.

Prices

Single stroller

\$15 per day with no deposit
(\$13 per day for multi day rentals)

Double stroller

\$31 per day with no deposit
\$27 per day for multi day rentals

**Stroller rentals at Disney Springs require a \$100 credit card deposit.*

With multi-day rentals, you can skip the rental line entirely after your first visit. Head to the stroller handout area, show your receipt, and you'll be wheeled out in no time! This also applies for park-hopping throughout the day. Turn in your stroller at the first park and present your receipt at the next park. You'll be issued another stroller at no additional charge. (The same applies to locker rentals and ECV/ESV rentals, too!)



THIRD-PARTY STROLLER VENDORS

If you don't bring your own or rent from Disney



Scooterbug

Scooterbug has reasonable prices and a variety of strollers. The fact they deliver to your Disney resort without the need for you to be present makes using their services a great option to consider. Snack trays, bag hooks, and bottle holders are all an extra \$10 each. You will also want to ask about renting a rain cover; a necessity in Orlando! While Florida may be called the 'Sunshine State', it is prone to flash rain storms and has a long rainy season between June and September. I recommend bringing your own rain cover or an extra poncho to do your best to cover your stroller and belongings.

Orlando stroller

Orlando Stroller offers a variety of strollers at a reasonable price as well! While they cannot leave your rental with bell services at Disney resorts, they still deliver to Disney and Non-Disney resorts for free. They also offer the option to pick up your rental at Orlando International Airport (MCO) and are conveniently located at the Hold My Luggage counter at B Terminal, Level 1, at the opposite end of Disney's Magical Express. Included in their price is also a free rain cover, and small cooler and all of their strollers come with cup holders. They also offer insurance for \$15, covering theft and any damage to the stroller.





Magic Kingdom

Top Attractions

- The Barnstormer (35" tall) - Small roller coaster for kids new to coasters. If you want to see how your child handles riding coasters, this is the perfect testing ground.
- Big Thunder Mountain Railroad (40" tall to ride) - Western mining-themed coaster. A fun and entertaining queue but a rough ride.
- Buzz Lightyear's Space Ranger (all ages) - Combination space travel-themed indoor ride and shooting gallery. A real winner - not to be missed!
- Dumbo the Flying Elephant (all ages) - Disney's signature ride for children. Has a play area with interactive elements.
- The Hall of Presidents - Behold all 44 Presidents of the United States in a stirring show tracing the nation's history.
- It's a Small World - Indoor boat ride. Small boats carry visitors on a tour around the world, with singing and dancing dolls showcasing the dress and culture of each nation
- Jungle Cruise - Outdoor boat ride, fun and relaxing, and full of "Dad Jokes". Some macabre sights might frighten young children.



Magic Kingdom

Top Attractions

- Mad Tea Party (all ages) - Midway-type spinning ride. You can make the teacups spin faster by turning the wheel in the center. Not for those prone to motion sickness!
- Magic Carpets of Aladdin (all ages) - Much like Dumbo but a Magic Carpet, watch out for the spitting camel positioned to spray jets of water on riders! Meet Jasmine & Aladdin nearby at Agrabah Bazaar.
- The Many Adventures of Winnie the Pooh (all ages) - Ride in a "Hunny Pot" through the pages of a huge picture book into the Hundred Acre Wood. Meet Pooh and Tigger nearby throughout the day.
- Mickey's Philharmagic (all ages*) - A 3D movie featuring Mickey and Donald along with other favorites!
- Monsters, Inc. Laugh Floor (all ages) - Interactive animated comedy routines. Behind the scenes Disney employees voice the characters and often interact with audience members.
- Peter Pan's Flight (all ages) - This dark ride (indoor) takes you on a relaxing trip in a "flying pirate ship" over old London and to Never Land.



Magic Kingdom

Top Attractions

- Pirates of the Caribbean (all ages) - Indoor pirate-themed adventure boat ride. Intense boat ride with somewhat gruesome sights and a short, unexpected slide down a flume.
- Princess Fairytale Hall (all ages) - Four royals meeting & greeting at any time & you can see two of them at once. Signs outside the entrance tell you which line leads to whom and how long the wait will be
- Seven Dwarfs Mine Train (38" tall to ride) - Another great roller coaster for first time kiddos! While a popular ride, some believe that older grade school children who enjoy coasters are better off to save their Lightning Lane for Space Mountain or Big Thunder Railroad.
- Space Mountain (44" tall to ride) - Roller coaster in the dark! Involves sudden blackouts, abrupt turns & plummets. Many love this attraction, but if you're not a thrill-seeker this ride is not for you.
- Splash Mountain (40" tall to ride) - Indoor/outdoor water-flume adventure ride. Most of the ride is slow, but the 52ft plunge down a steep chute at the end is a thrill. You WILL get wet on this ride!
- Tomorrowland Speedway (32" tall to ride w/adult - 54" to drive unassisted) - Drive-em' yourself mini-cars. Your child controls the steering wheel while you control the foot pedals. Children will feel like they're really driving, even though they are on a self-guiding track.



Animal Kingdom

Top Attractions

- Avatar Flight of Passage (44" tall to ride) - Flight simulator. Here you ride a banshee from the movie Avatar. Super headliner attraction! However, it may induce motion sickness and a snug restraint system may cause some claustrophobia.
- Na'vi River Journey (all ages) - Indoor boat ride. Travel through the nighttime jungle on a sacred river, discover the creatures of the rainforest and meet the Na'vi shaman of songs.
- The Animation Experience (all ages) - Character drawing class. Guests are taught to draw some of Disney's most famous animal characters in a 25-minute class.
- Dinosaur (40" tall to ride) - Motion simulator dark ride. Not for the faint of heart- the ride is dark and tosses you around with pesky dinosaurs jumping out. Most kids under the age of 9 find it terrifying.
- Expedition Everest (44" tall to ride) - High-speed outdoor roller coaster. The ride is very smooth and a must for coaster lovers, but not suitable for young children; even if they meet the height requirement.
- Festival of the Lion King (all ages) - Theater-in-the-round stage. A mini Broadway show based on The Lion King. Loud but not frightening!



Animal Kingdom

Top Attractions

- Finding Nemo - The Musical (all ages) - Elaborate stage show headlining puppets, dancers, acrobats and special effects! Some scenes, such as one in which Nemo's mom is eaten, may be too intense for some very small children.
- It's Tough to Be a Bug! (all ages*) - 3D theater show. A clever show but very intense. The show is about bugs and is coupled with special effects, which may scare kids 7 and under. But for the rest of us, a great show that many find fun!
- Kali River Rapids (38" tall to ride) - Skim across an erupting geyser, drift below a canopy of lush vegetation, and be whisked along fast-moving rapids. Includes a 20-foot plummet.
- Kilimanjaro Safaris (all ages) - Truck ride through an "African wildlife reservation". Here you can spot hippos, zebras, giraffes, lions, rhinos, and more. Very well done safari ride. The landscape and animals are stunning! Very popular attraction and long lines begin to form quickly.
- Up! A Great Bird Adventure (all ages) - Stadium show about birds. In this show, Russel and Dug from the film Up! discover bird species from around the world. Swooping birds may startle some younger children.



Epcot

Top Attractions

- Fireworks Show (all ages) - Nighttime fireworks show at World Showcase Lagoon. This new show is rumored to feature music and/or clips of Disney movies related to the 11 countries of the World Showcase.
- Soarin' (40" tall to ride) - Flight simulator ride. Here you'll feel like you're hang-gliding around the world! Special effects include wind, sound, and even smell! The ride itself is thrilling but perfectly smooth.
- Test Track (40" tall to ride) - Automobile test track simulator ride. Intense ride that may frighten guests of any age. Often a favorite of teens! Here you design a vehicle then go for an actual drive through Chevrolet's test track. You will test braking maneuvers, cornering, and acceleration of up to 65 mph.
- Disney & Pixar Short Film Festival (all ages) - Movie trailers for upcoming Disney-Pixar movies. The air-conditioned space shows Disney and Pixar animated 4-D short movies, 10-15 minutes long. A short, enjoyable, and great place to beat the heat if needed!
- Journey into Imagination with Figment (all ages) - Dark fantasy-adventure ride. Figment (the purple dinosaur) takes you on a tour of the imagination institute with the help of your five senses. Watch out for the gust of wind at the end!



Epcot

Top Attractions

- Spaceship Earth (all ages) Educational dark ride through past, present and future. This ride takes place inside Epcot's premier landmark. Audio-Animatronic scenes depict mankind's development in communications from cave paintings to the internet.
- Living with the Land (all ages) Indoor boat ride adventure through the past, present and future of US farming and agriculture. A lot of the produce grown here is served to guests in the restaurants at Epcot.
- The Seas with Nemo & Friends (all ages) Ride through a tunnel in The Seas' main tank. Here you will board a "clamobile" for our journey through the aquarium. The technology used makes it appear as if the animated characters are swimming with the live fish.
- Turtle Talk with Crush (all ages) An interactive animated film. This show stars the sea turtle Crush, from the film Finding Nemo. Here he and a few of his friends from Finding Dory interact with audience members. A great family show for all!
- Mission Space (Green or Orange) (40" tall to ride) Space flight simulation ride. Each guest plays the role of someone in a flight crew and is required to perform certain functions during the flight. Orange Mission will experience G-forces. A less intense Green Mission takes guests on an orbital adventure around Earth.



Hollywood Studios

Top Attractions

- Toy Story Mania (all ages) - 3D ride through an indoor shooting gallery. The pull string cannon on your ride vehicle takes advantage of computer-generated imagery to toss rings, shoot balls, and even throw pies.
- Alien Swirling Saucers (32" tall to ride) - Spinning car ride. Think the scrambler ride from the county fair but with trackless technology and a lot less neck breaking. Fun ride for kiddos!
- Slinky Dog Dash (38" tall to ride) - Outdoor roller coaster. Themed to Toy Story's Slinky Dog. The ride is more intense than the Magic Kingdom's Barnstormer and Seven Dwarf Mine Train. Lots of hills but no loops or high speed curves. Long lines early!
- The Twilight Zone Tower of Terror (40" tall to ride) - Sci-fi themed indoor thrill ride. Visually intimidating to young children; contains intense, realistic special effects. The plummeting elevator at the end of the ride frightens many adults. Many children don't like the feeling of being pulled out of their seats. A big hit with teens!
- Rise of the Resistance (40" tall to ride) - A combined trackless dark ride, walk-through, motion simulator, and drop ride system. Riders are in the middle of an altercation between the Resistance and the First Order. Intense ride that may frighten children under 8.



Hollywood Studios

Top Attractions

- Millennium Falcon Smugglers run (38" tall to ride) - A motion simulator attraction in Galaxy's Edge. Guests enter the iconic Millennium Falcon starship for a secret interactive smuggling mission, with each passenger playing a role in the completion of the mission. (Be careful how you fly because your flight team's collective success or failure will be remembered by characters you encounter later around the land!)
- Mickey & Minnie's Runaway Railroad (all ages) - The first Mickey Mouse-themed ride-through attraction at a Disney theme park, this trackless "dark ride" is based on the stylized world from the television series. *May cause motion-sickness*
- Beauty and the Beast - Live on Stage (all ages) - This Live musical, featuring Disney characters is performed in an open-air theater. The show is popular so be sure to show up 30 minutes early to get a seat if you don't use Lightning Lane.
- Muppet-Vision 3D (all ages) - 3D movie starring The Muppets. This show is a great attraction for all ages! The presentation can be intense and a little loud, so if you have a small child who is a little scared, encourage them to view it without the 3D glasses.



Magic Kingdom

Restaurant Guide

Cinderella's Royal Table

Here you will dine with Cinderella herself and several of her royal friends! Prepare yourself for an enchanted lunch or dinner as Cinderella's Royal Chef begins your feast with assorted cured meats and cheeses. Soon after, it's on to an unforgettable main course with choices for adults ranging from roasted chicken breast and tenderloin of beef to chef's fish-of-the-day.

PRICE: \$62 for adults ages 10+ (plus tax and gratuity) \$37 for children ages 3-9 (plus tax and gratuity)

[VIEW MENU](#)

The Crystal Palace

Welcome to the 100-acre woods! See Pooh and friends at this dining location. Inspired by Victorian greenhouses of the late 1800s, The Crystal Palace brims with light, topiaries and tropical palms. It's an enchanting spot to dine in the heart of Magic Kingdom park with views of Cinderella Castle and Main Street, U.S.A.

**PRICE: \$39 for adults ages 10+ (plus tax and gratuity)
\$23 for children ages 3-9 (plus tax and gratuity)
Lunch and Dinner only at this time**

[VIEW MENU](#)



Magic Kingdom

Restaurant Guide

Be Our Guest

Be Our Guest Restaurant is an expansive and elegant dining destination located at the foot of Beast's Castle in Fantasyland. Whether you are enjoying lunch or dinner, you will experience an atmosphere made for memories. It's the one and only place in all the "World" to meet the Beast!

Features: "Royal Rooms for Loyal Subjects"

Be Our Guest offers 3 meticulously imagineered dining areas, each designed to immerse our Guests in the heartwarming mystery and romance of Beauty and the Beast:

- The Grand Ballroom: Go for baroque in this magnificent ballroom with its high, domed ceiling, chandeliers and snow-laced Gothic arches.
- The West Wing: Dine in the Beast's mysterious West Wing study—if you dare—and perhaps you'll even spy his enchanted rose.
- The Castle Gallery: Get swept up in the romance of Belle's private library, and inspired by the larger-than-life figures of Belle and Beast dancing.

PRICE: \$62 for adults ages 10+ (plus tax and gratuity)

\$37 for children ages 3-9 (plus tax and gratuity)

[VIEW MENU](#)



Magic Kingdom

Restaurant Guide

Jungle Navigation Co. Skipper's Canteen

The same skippers who guided your steamer down the Nile, Amazon and Congo Rivers have opened the doors of their tropical headquarters to fellow adventurers!

Dine in 3 curiously quirky rooms: the crew's colonial-era Mess Hall (which is not messy at all, thank you very much); the Jungle Room, former family parlor of Dr. Albert Falls himself; and the S.E.A. Room—a once-secret meeting place for the Society of Explorers and Adventurers! (Pro Tip: ask for the S.E.A. room and get ready for a side of punny jokes to go with your meal.)

PRICE: \$15 - \$34.99 per adult (plus tax and gratuity)

[VIEW MENU](#)



Restaurant Guide

Biergarten Restaurant

Be transported to a traditional Bavarian village as you feast on German fare to the oompah beat of a lively Polka band.

PRICE: \$15 - \$34.99 per adult (plus tax and gratuity)

[VIEW MENU](#)

Chefs de France

Be transported to the heart of Paris at this charming café. With its high ceilings, intricate mosaic flooring and expansive windows looking out onto the promenade, this bright and airy restaurant features innovative French cuisine.

PRICE: \$15 - \$34.99 per adult (plus tax and gratuity)

[VIEW MENU](#)

Coral Reef Restaurant

With tables beside windows looking into The Seas' aquarium offers a colorful mealtime with diversion for all ages. If your kids don't eat fish they also serve beef and chicken.

PRICE: \$15 - \$34.99 per adult (plus tax and gratuity)

[VIEW MENU](#)



Epcot

Restaurant Guide

Garden Grill

See Chip 'n' Dale and their Disney pals as you dig into family-style dining and revolve around vibrant views from Living with the Land.

**PRICE: \$55 adults ages 10+, \$36 for children ages 3-9
(plus tax and gratuity)**

[VIEW MENU](#)

La Cava Del Tequila

Enjoy “the essence of Mexico” with over 200 tequilas, top-shelf cocktails, Mexican beer and wine. Take off with a tequila flight or a wild passion fruit margarita. Light snacks such as guacamole and queso with corn chips are served.

PRICE: \$14.99 and under per adult (plus tax and gratuity)

[VIEW MENU](#)

La Hacienda San Angel

Authentic Mexican cuisine and premium margaritas are served with Old World hospitality at this waterfront retreat.

PRICE: \$15 - \$34.99 per adult (plus tax and gratuity)

[VIEW MENU](#)



Restaurant Guide

La Crêperie de Paris

Enjoy savory buckwheat galettes or satisfy your sweet tooth with a crêpe featuring delectable options like fruit, whipped cream, hazelnut chocolate spread or caramel beurre salé. Lastly, sip on authentic French hard cider—a refreshing accompaniment to your meal!

PRICE: \$15 - \$34.99 per adult (plus tax and gratuity)

[VIEW MENU](#)

Space 220

This dining experience will take guests on a journey from Earth to the stars! Simulated to feel 220 miles above Earth's surface for an immersive experience, you'll find upscale, contemporary fare. Space 220 Restaurant offers a two-course prix fixe menu for lunch and a three-course prix fixe menu for dinner.

PRICE: Lunch-\$55 per adult/ 29 per child
Dinner- \$79 per adult/ \$29 per child (plus tax and gratuity)

[VIEW MENU](#)

Tutto Italia & Via Napoli

Italian restaurants; discover authentic Italian cooking including hearty pastas, fresh salads, and pizzas perfected in wood-burning ovens.

PRICE: \$15 - \$34.99 per adult (plus tax and gratuity)

[VIEW MENU](#)



Epcot

Restaurant Guide

Le Cellier Steakhouse

Descend into the cozy cellar of a Canadian château for exquisite steaks and seafood specialties.

PRICE: \$15 - \$59.99 per adult (plus tax and gratuity)

[VIEW MENU](#)

Rose and Crown

With a lively pub vibe, practice your finest toast while you quench your thirst and quell your appetite with fresh pints, flavorful bites and classic British fare you won't find elsewhere!

PRICE: \$15- \$34.99 per adult (plus tax and gratuity)

[VIEW MENU](#)

San Angel Inn Restaurant

Dine in perpetual twilight at this Mexican restaurant, modeled after a 17th-century hacienda at the base of Mayan ruins.

PRICE: \$15 - \$34.99 per adult (plus tax and gratuity)

[VIEW MENU](#)



Animal Kingdom

Restaurant Guide

Rainforest Cafe

Don your safari hat and bring a hippo-sized appetite as you go wild with a feast in the middle of a tropical rainforest.

PRICE: \$15 - \$34.99 per adult (plus tax and gratuity)

[VIEW MENU](#)

Tiffins

Set off on a culinary expedition of international cuisine at this restaurant inspired by exploration and adventure.

PRICE: \$15 - \$59.99 per adult (plus tax and gratuity)

[VIEW MENU](#)

Yak & Yeti

Travelers can relax and replenish with a pan-Asian feast in this beautiful Nepalese-style restaurant.

PRICE: \$15 - \$34.99 per adult (plus tax and gratuity)

[VIEW MENU](#)



Hollywood Studios

Restaurant Guide

Baseline Tap House

Venture down to this cheery corner pub specializing in California brews and wine.

PRICE: \$14.99 and under per adult (plus tax and gratuity)

[VIEW MENU](#)

Hollywood and Vine

Celebrate breakfast with Disney Junior Stars or enjoy lunch and dinner with Minnie and friends at seasonal dining parties.

PRICE: \$35 - \$59.99 per adult (plus tax and gratuity)

[VIEW MENU](#)

Mama Melrose

Mangia in the backlot of Disney's Hollywood Studios at this casual but colorful Italian eatery with a California twist.

PRICE: \$35 - \$59.99 per adult (plus tax and gratuity)

[VIEW MENU](#)



Hollywood Studios

Restaurant Guide

The Hollywood Brown Derby

Dine in an authentic replica of the famous Brown Derby, a Tinseltown landmark steeped in glamour and glitz with an upscale atmosphere that harkens back to the Golden Age of Hollywood.

PRICE: \$35 - \$59.99 per adult (plus tax and gratuity)

[VIEW MENU](#)

Sci-Fi Dine in Theater

Enter the Hollywood-style sound stage as a classic car hop guides you to your very own automo-booth or table. Kitschy vintage memorabilia, in a drive-in diner with a sky full of twinkling stars set the mood as you place your order.

PRICE: \$15 - \$34.99 (plus tax and gratuity)

[VIEW MENU](#)



Hollywood Studios

Restaurant Guide

Oga's Cantina

For those who have long dreamed of visiting one of the galaxy's most infamous watering holes, Oga's Cantina brings that dream to life.

PRICE: \$35 - \$59.99 per adult (plus tax and gratuity) experiences are currently modified and available

[VIEW MENU](#)

50's Prime Time Cafe

Enjoy hearty home cooking with pot roast, golden fried chicken, and so much more. Just make sure you wash your hands, put your napkin in your lap and keep your elbows off the table, unless you want a stern talking-to from Uncle Fred.

PRICE: \$15 - \$34.99 (plus tax and gratuity)

[VIEW MENU](#)

ENCHANTING EXTRAS

ENHANCE & PERSONALIZE YOUR VACATION

Droid Depot

Build your own droid, one of the galaxy's most indispensable sidekicks! Starting from \$99.99



Savi's Workshop - Handbuilt Lightsaber

Build your own custom lightsaber and continue the way of the Force. Starting from \$219.99



Dawn to Life - Cirque du Soleil

Watch in wonder as the beauty of Disney animation blends with the thrilling spectacle of Cirque du Soleil!



Magic Kingdom Fireworks Dessert Party

Feast your eyes on Disney's Fireworks Spectacular before enjoying 50th-Anniversary desserts. \$99+



ENCHANTING EXTRAS

ENHANCE & PERSONALIZE YOUR VACATION

Disney VIP Tours

Create your Disney dream day & explore the parks with an official VIP Guide. Prices vary.



Ferrytale Fireworks: Dessert Cruise

Delight in desserts, drinks, and views of fireworks aboard a ferryboat. Starting from \$99



Capture Your Moment

Commemorate your celebration with a photo session including a view of iconic Cinderella Castle. \$50+



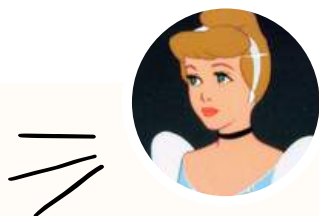
Horse Drawn Excursion

Relax on a horse-drawn carriage ride along the scenic banks of the Sassagoula River. Starting at \$55



PRINCESS MEET & GREETs

WHEN & WHERE TO FIND YOUR FAVORITE PRINCESSES



The Royal Princess Processional (Magic Kingdom)
Cinderella's Royal Table (Magic Kingdom)
1900 Park Fare (Grand Floridian Resort)

Cinderella



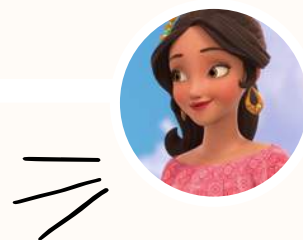
Boat Promenade (Animal Kingdom)

Pocahontas



The Royal Princess Processional (Magic Kingdom)

Merida



The Royal Princess Processional (Magic Kingdom)

Elena



The Royal Princess Processional (Magic Kingdom)
Meet-and-Greet; Epcot; usually France)
Beauty and the Beast - Live on Stage (Hollywood Studios)

Belle

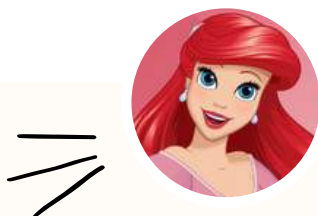


The Royal Princess Processional (Magic Kingdom)

Tiana

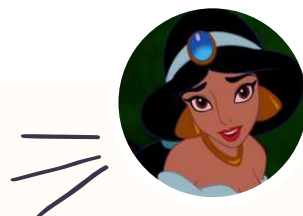
PRINCESS MEET & GREETs

WHEN & WHERE TO FIND YOUR FAVORITE PRINCESSES



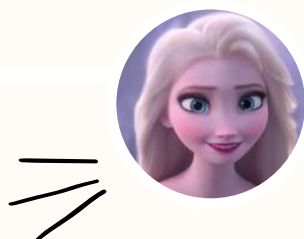
Akershus Royal Banquet Hall (Epcot)
The Royal Princess Processional (Magic Kingdom)

Ariel



The Royal Princess Processional (Magic Kingdom)
Meet-and-Greet (Epcot; usually Morocco)

Jasmine



Meet-and-Greet (Epcot; usually Norway)
Frozen Sing-Along (Hollywood Studios)

Elsa



The Royal Princess Processional (Magic Kingdom)
Meet-and-Greet (Epcot; usually France)

Aurora



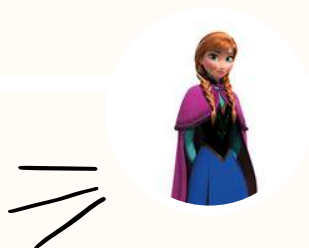
PRINCESS MEET & GREETs

WHEN & WHERE TO FIND YOUR FAVORITE PRINCESSES



*The Royal Princess Processional (Magic Kingdom)
Meet-and-Greet; (Epcot; usually Germany)
Storybook Dining @ Artist Point (Dinner)*

Snow White



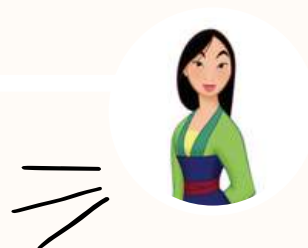
*Meet-and-Greet (Epcot; usually Norway)
Frozen Sing-Along (Hollywood Studios)*

Anna



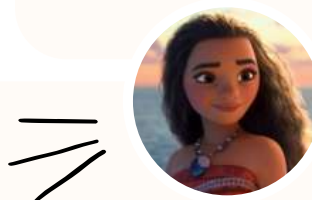
The Royal Princess Processional (Magic Kingdom)

Rapunzel



*The Royal Princess Processional (Magic Kingdom)
Meet-and-Greet (Epcot; usually China)*

Mulan



Magic Kingdom Cavalcade (Magic Kingdom)

Moana

MagicBands

YOUR KEY TO A
CAREFREE VISIT



What are MagicBands?

MagicBands are colorful, waterproof wristbands—resembling a watch or bracelet—that you can quickly and easily touch to a sensor called a touch point. Cards work in a similar fashion, but physically resemble a plastic credit card or driver's license. Both MagicBands and cards allow you to travel lighter throughout your vacation.

You can use your MagicBand or card to:

- Unlock the door of your Disney Resort hotel room.
- Enter theme and water parks (with valid admission).
- Connect Disney PhotoPass images to your account.
- Charge food and merchandise purchases to your Disney Resort hotel room (only available during your hotel stay).

How to get a MagicBand or Card

MagicBands are no longer provided complimentary to Disney Resort hotel Guests. MagicBands are offered for sale up to 10 days prior to arrival to Guests residing in the United States and Canada in English only. MagicBands may also be purchased when you arrive.

Your Choice of MagicBands

- Colorful MagicBands: choose from 8 solid hues: pink, red, purple, orange, yellow, green, blue and gray.
- Premium MagicBands: choose from designs featuring some of the world's most-loved Disney friends, from Mickey Mouse to Super Heroes and beyond.

How to Link Your MagicBand

If you have already purchased a MagicBand, first, create or sign into your Disney Account. Then, click the link below.

[LINK YOUR MAGICBAND](#)

Genie +

BUILD YOUR ITINERARY



What Is Genie Service?

An important tool that will enhance your time at Disney is Disney's free app: My Disney Experience. My Disney Experience is a tool that will help to keep all of your information regarding your time at Disney in one place. One important feature is Genie Service; Disney's complimentary service to help you create your daily itinerary based on your party's top interests.

What is Genie + Service?

Disney's updated "Fast Pass" system, Genie + Lightning Lanes are a service you can purchase for \$15 per day, per ticket. This allows you to use a Genie+ Lightning lane entrance once per ride, per day. How it works: At select attractions and entertainment, you may choose the next available arrival window for Lightning Lane entrances. Once you've redeemed your initial selection (or the arrival window has passed), you can use the app to check your My Day itinerary or Tip Board to see when you're eligible to make another selection.

Summary

- Genie Service is complimentary and a part of the Disney My Disney Experience App
- Genie + is Disney's updated "Fast Pass" system that allows you to skip ahead in lines throughout the day.

Genie + Guide

PRICING & AVAILABILITY



How much does Genie + cost?

Genie+ costs \$15 per person, per day. You can purchase the Genie+ option before your trip along with your park tickets, or on specific days of your visit. If purchased in advance, the \$15 fee (after tax, it's \$15.98) is charged for every person who will use Genie+, for every ticketed day of your trip.

How does Genie + work?

Beginning at 7am, those who have paid for Genie+ that day can make their first ride selection. You can make a second selection at earliest when the following requirements are met:

- When you redeem the first selection
- When the first selection's arrival window has ended

- When 120 minutes have passed since you made the first selection (or, if you made your first selection prior to park opening, 120 minutes after park opening)

Lightning Lane Attractions

For some of Disney's most highly demanded attractions, Lightning Lane entrance access is available to purchase individually for various prices depending on the ride and daily demand. Guests may purchase and select an arrival window one at a time for up to 2 attractions per day. This option is available for all guests - with or without Disney Genie+ service.

Prices range by attraction, date, and park but typically vary between \$7 and \$15 per person/per ride. Guests staying at a Disney Property can make their first purchase within the My Disney Experience app starting at 7am on the day of their visit.





MAGIC KINGDOM

RIDES WITH GENIE +

- Monsters Inc. Laugh Floor
- Peter Pan's Flight
- Pirates of the Caribbean
- See Cinderella and a Visiting Princess at Princess Fairytale Hall
- See Mickey at Town Square Theater
- See Princess Tiana and a Visiting Princess at Princess Fairytale Hall
- Space Mountain (2/25/2022-8/7/2022 only)
- Splash Mountain
- Tomorrowland Speedway
- Under the Sea ~ Little Mermaid
- The Barnstormer
- Big Thunder Mountain Railroad
- Buzz Lightyear's Space Ranger Spin
- Dumbo the Flying Elephant
- Haunted Mansion
- "it's a small world"
- Jungle Cruise
- Mad Tea Party
- The Magic Carpets of Aladdin
- The Many Adventures of Winnie the Pooh
- Mickey's Once Upon a Christmastime Parade (seasonal)

**Seven Dwarfs Mine Train & Space Mountain require separately priced Individual Lightning Lane.*

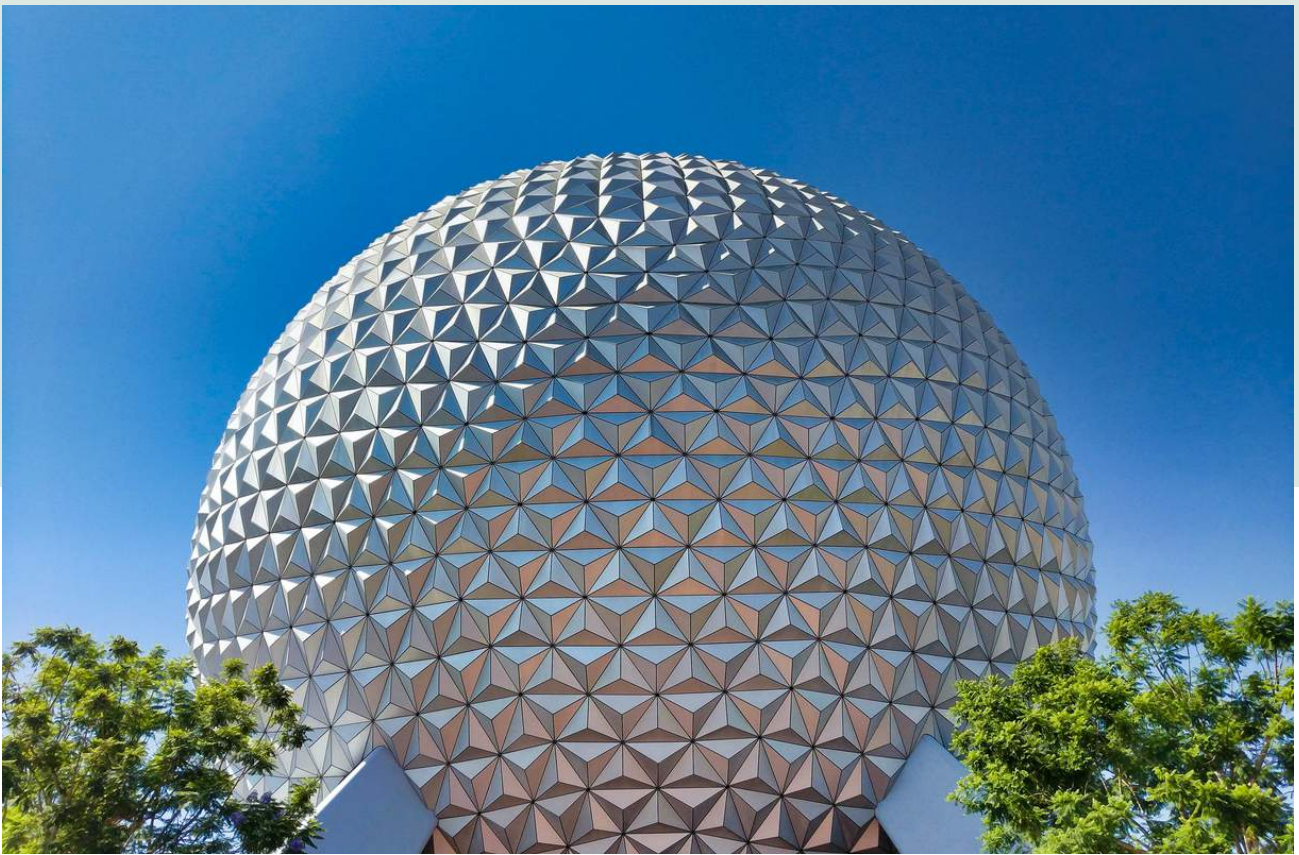


HOLLYWOOD STUDIOS

RIDES WITH GENIE +

- Alien Swirling Saucers
- Beauty and the Beast Sing-Along
- Disney Jr. Dance Party
- For the First Time in Forever: A Frozen Sing-Along Celebration
- Indiana Jones Epic Stunt Spectacular
- Mickey & Minnie's Runaway Railway (2/25/2002-8/7/2022)
- Muppet*Vision 3D
- Rock 'n' Roller Coaster
- See Olaf at Celebrity Spotlight
- Slinky Dog Dash
- Star Tours
- Toy Story Mania!
- The Twilight Zone Tower of Terror
- Millennium Falcon: Smuggler's Run

**Mickey & Minnie's Runaway Railway (except 2/25/2022-8/7/2022) and Star Wars: Rise of the Resistance are available only with the separately priced Individual Lightning Lane.*



EPCOT

RIDES WITH GENIE +

- Disney and Pixar Short Film Festival
- Frozen Ever After (2/25/2022-8/7/2022 only)
- Journey into Imagination with Figment
- Mission: SPACE – Green & Orange
- Soarin'
- Spaceship Earth
- The Seas with Nemo & Friends
- Test Track
- Turtle Talk with Crush
- Living with the Land

**Frozen Ever After (except 2/25/2022-8/7/2022) and Remy's Ratatouille Adventure are available only with the separately priced Individual Lightning Lane.*



ANIMAL KINGDOM

RIDES WITH GENIE +

- The Animation Experience
- Celebration of the Festival of the Lion King
- DINOSAUR
- Expedition Everest (2/25/2022-8/7/2022)
- It's Tough to Be a Bug
- Kali River Rapids
- Kilimanjaro Safaris
- Na'vi River Journey
- Feathered Friends in Flight

**Avatar Flight of Passage and Expedition Everest (except 2/25/2022-8/7/2022) are available only with the separately priced Individual Lightning Lane.*

DISNEY SUCCESS TIPS

FROM YOUR DISNEY EXPERT

- ✓ Set up a My Disney Experience Account and download the accompanying app
- ✓ Do not rent a car. Each Disney hotel has free transportation to the parks!
- ✓ Know how to use crowd calendars to determine how busy the parks will be each day
- ✓ Take the **time** to read and learn about each ride so you have a plan!
- ✓ Always fly into Orlando International Airport (MCO) for the easiest hotel transfer
- ✓ Learn about height requirements and rider switch to make the most of your time.
- ✓ Book Your advance dining reservations 60 days prior to arrival
- ✓ Take advantage of early theme park entry, rider switch, and single rider.

Rider Switch Guide

THE BEST OF BOTH WORLDS

What Is Rider Switch?

An important tool at your disposal during your time at Disney is going to be their program called “Rider Switch”. Rider Switch allows friends and family of any guests who don’t meet the boarding requirements of a ride or don’t wish to experience a particular attraction to still experience an attraction.

To Use Rider Switch

Take the following steps to utilize Rider Switch when approaching an attraction:

1. First check with a Cast Member to see if Rider Switch is offered at the attraction you’d like to experience.
2. Upon arriving at the selected attraction, approach the greeting Cast Member with your entire group. Members will be divided into 2 parties.
3. The supervising Guests of Party 2 - which can include a maximum of 3 people - will have their admission media/tickets scanned and must wait in the designated area - usually outside the attraction - while Party 1 waits in line to experience the attraction.
4. After Party 1 experiences the attraction, they’ll assume supervision of the non-riding Guests.
5. The supervising Guests of Party 2 should then return to the appropriate attraction entrance (e.g. attraction exit) to have their admission media/tickets re-scanned by a Cast Member for the Rider Switch entitlement. At this point, Party 2 may enter the appropriate attraction return line and board without waiting in the regular queue.

View the complete list of rides that utilize Rider Switch below



[RIDER SWITCH](#)

DISNEY SUCCESS TIPS

WHAT TO DO IF THINGS GO WRONG



RAIN

Check the weather each morning and be prepared with rain gear: Ponchos, umbrellas, an extra pair of shoes and stroller covers. Most outdoor attractions will continue as long as there is no lightning. Keep an eye out for the Rainy Day Cavalcade - a special parade with bright and colorful rain gear!



LATE OR MISSED ADVANCE DINING RESERVATION

Sometimes things happen and you might miss an Advance-Dining reservation. Know that there is usually a 15-minute grace period for dining reservations. You can even try to modify your time using the My Disney Experience app. If you are unable to modify your dining reservation, speak with a cast member or contact guest services (407-939-6344) and they will be able to assist!



SICK/INJURIES

Disney has its own Fire Department, First Responder Unit, and First Aid Centers that will have everything from bandaids to Pedialyte. You can find First Aid Centers by using the My Disney Experience app or asking a Cast Member. The most common issue guests face is dehydration: so make sure to utilize the FREE water at ANY counter service location!



MELTDOWNS

Because children at Disney are often over-stimulated, not getting enough sleep, and have consumed too much sugar, meltdowns are a common occurrence. If/when this happens in your family, stay calm, take a break, and get some decent food. Consider finding a quiet spot or returning to your hotel for a nap or dip in the pool to regroup.



LOST ITEMS

There is a Lost & Found center at each park. Use the My Disney Experience app or speak with a cast member to help you locate it. If the item isn't there, Disney uses an online system called Chargerback that allows you to answer questions and Disney will respond within 48 hours. If the item is found, they will ship it to you free of charge.



RIDE BREAKDOWNS

If a ride breaks down while you're on it, it is important to follow directions and listen to cast members for your safety. All rides are built with an internal evacuation system, but often the safest option for ride engineers is to get the ride going again rather than evacuate.



NEED CASH

If you find you're in need of cash, there are Chase ATMS in every park including the waterparks and resorts. Keep in mind there may be banking fees if you are not a member of Chase bank. While most cast members cannot accept tips, it is suggested to tip for valet parking, luggage assistance, or if you want to buy a cash-only time like balloons.