



MULTI-SECTION HOMES

Pacific Coast Little Lodges LLC
15711 HWY 101
Brookings, Oregon 97415



ABOUT US

Redman Homes is one of the oldest and most respected homebuilders in America. Founded in 1937, Redman pioneered factory home construction and continues to lead advances in quality control, design and home value today. Through experience and innovation we've harnessed production line efficiency and, paired with our high-quality craftsmanship, created a process that delivers homes that meet our superior standards.

A place to call your own

Beyond just building you a house, we're committed to providing you and your family with a home to make memories in that will last a lifetime. Somewhere you can feel secure. A place you can call your own. A home that fits your lifestyle and has your own personal touch. Whether you're an active young family constantly on the go or empty nesters ready to simplify, just relax – we have a home that's right for you.

Building the best

We build each and every home to meet or exceed a strict national or state building code, and we set even higher standards for ourselves. Focusing on the things you don't see as well as the things you do, we monitor and inspect our homes at every stage of construction. From the plumbing system to the electrical wiring, from the kitchen cabinets to the closets in the bedrooms – every home we build undergoes rigorous quality inspections to ensure we're providing you with nothing but our best.

More choice, more freedom

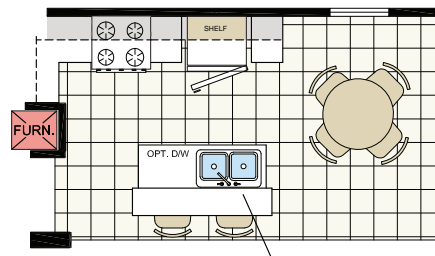
Our vast selection of floor plans, color choices and options give you the freedom to express your personal style and fit your home around your life.

The quality you expect

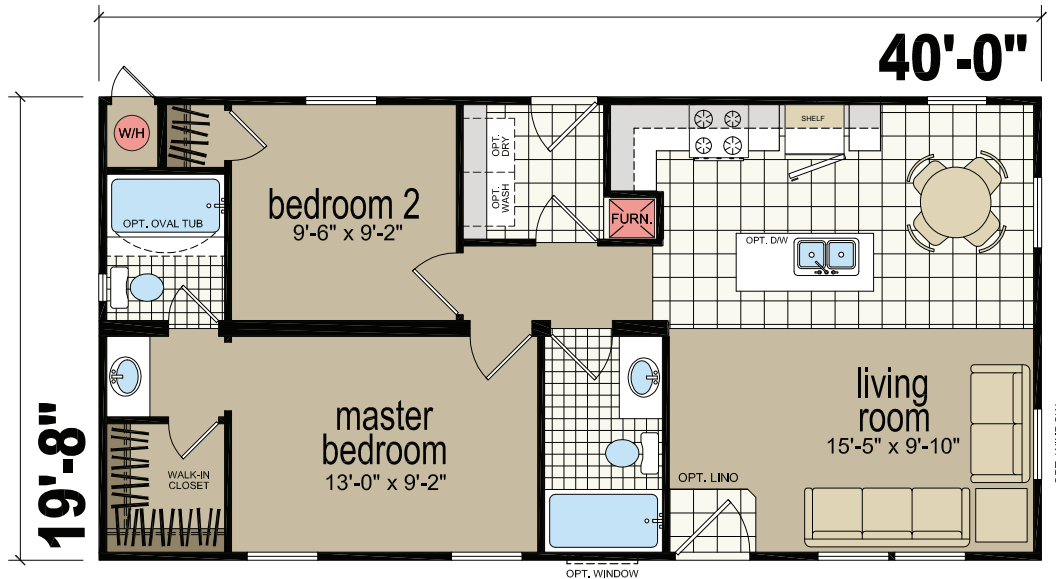
To build the best, we use the best. To meet your expectations of quality - and ours - we use only the highest-quality building materials and trusted national brand names. From insulation and fixtures to flooring and appliances, we only buy components from suppliers who share our commitment to quality. By using the best, we're confident we can build you a home with the lasting value you'll appreciate for years to come. Your housing consultant can tell you more about the specific brands used in our homes.

8402D

2 BED- 2 BATH
787 SQ.FT.

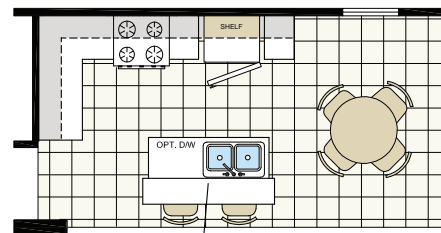


LOW WALL @ 42" WITH BAR TOP
OPTION ISLAND

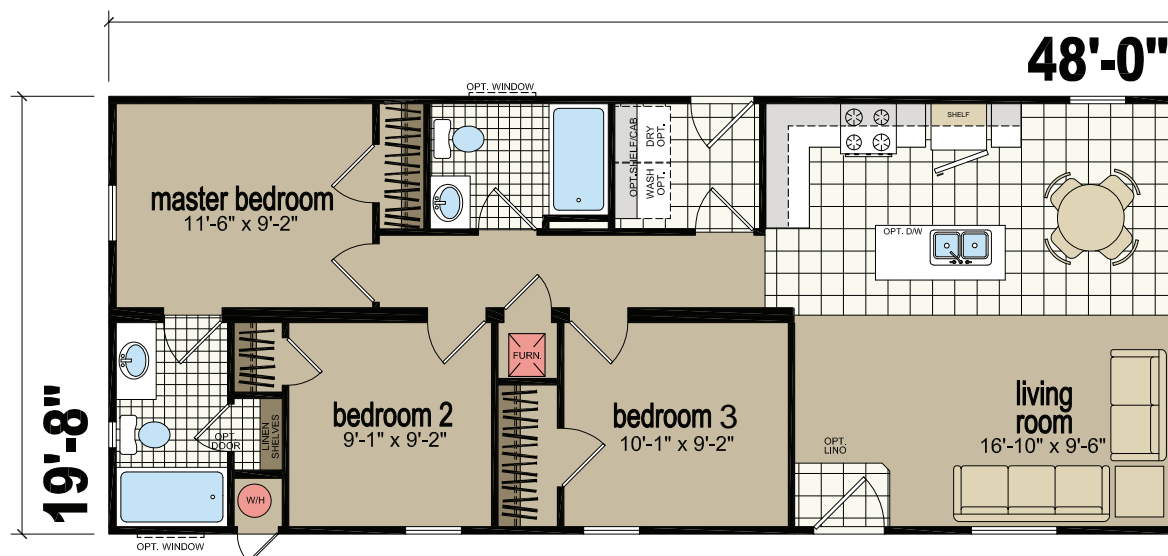


8483D

3 BED- 2 BATH
944 SQ.FT.

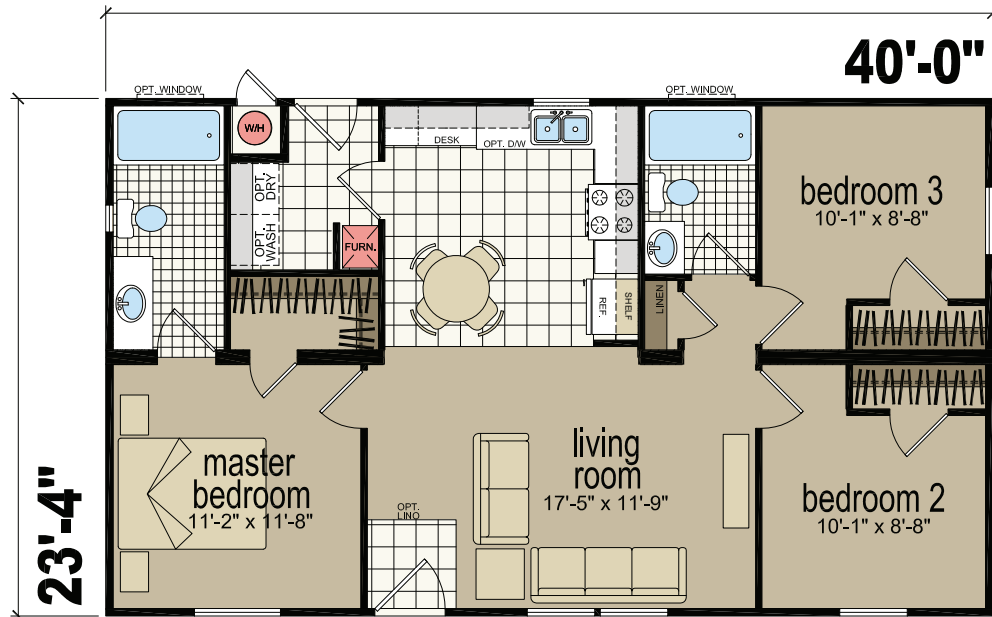


LOW WALL @ 42" WITH BAR TOP
OPTIONAL ISLAND



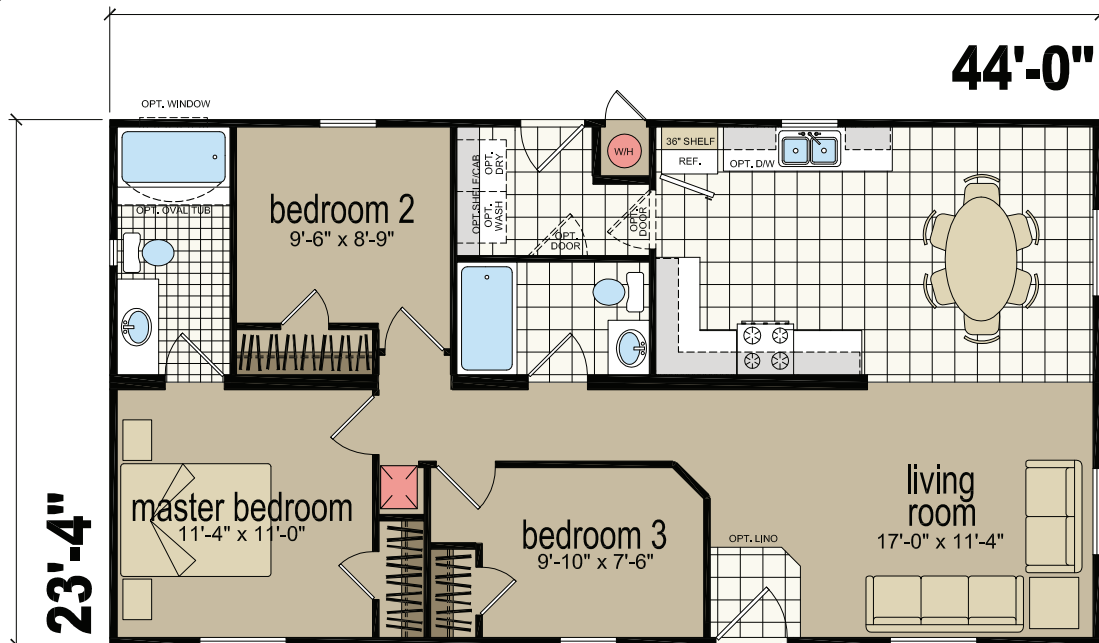
3403B

3 BED- 2 BATH
933 SQ.FT.



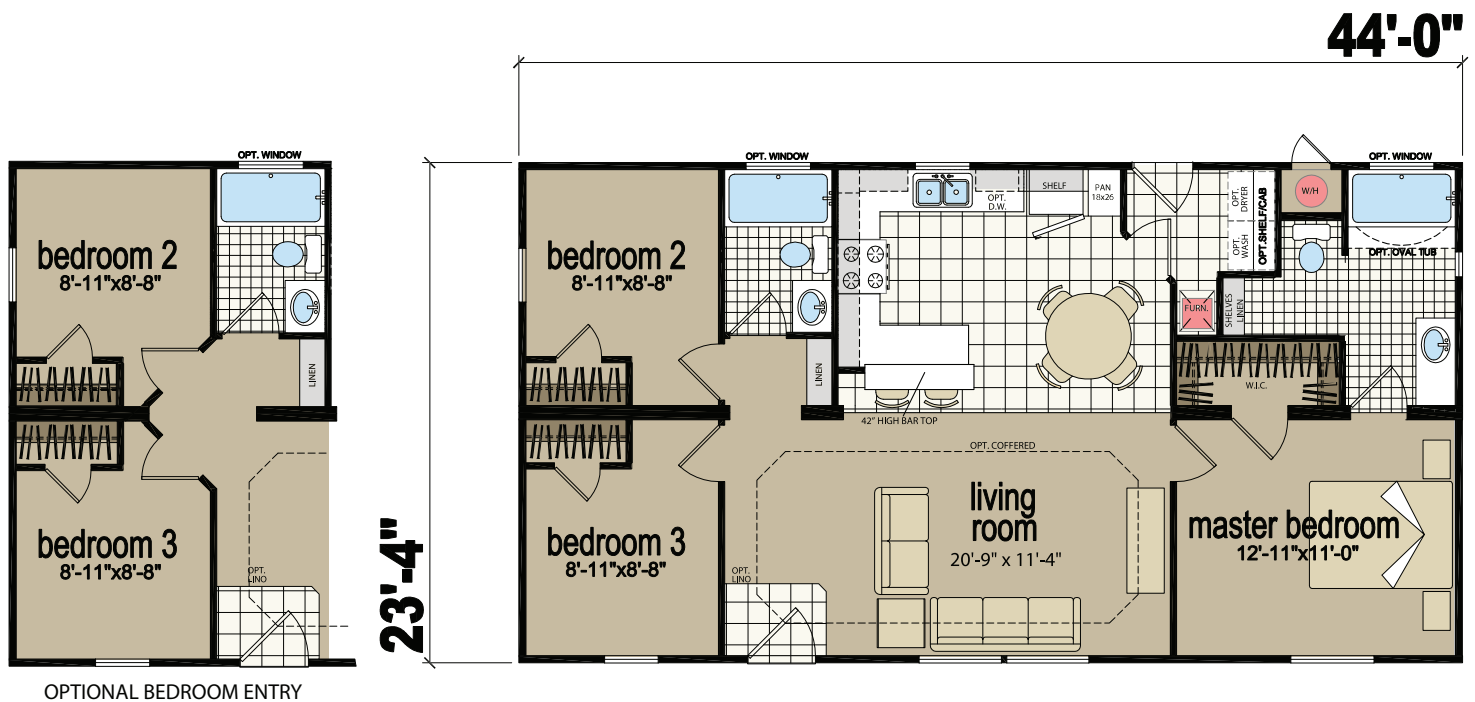
3443L

3 BED- 2 BATH
1027 SQ.FT.



3443R

3 BED - 2 BATH
1027 SQ.FT.

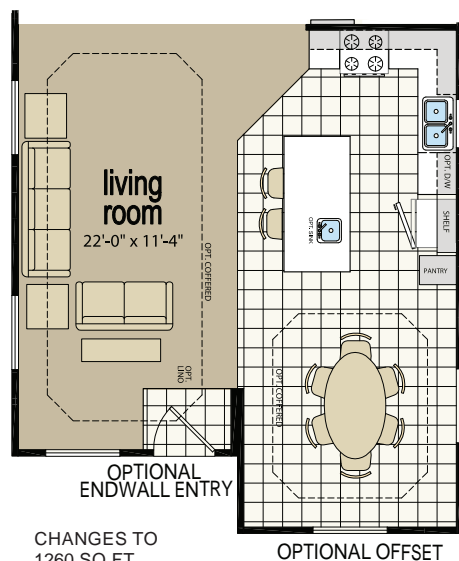
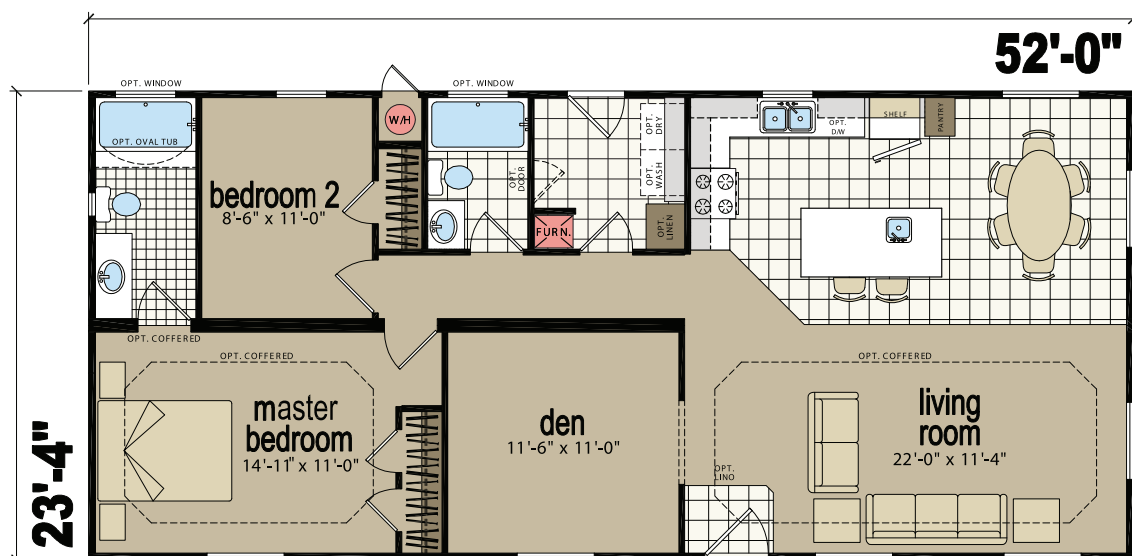




3522D



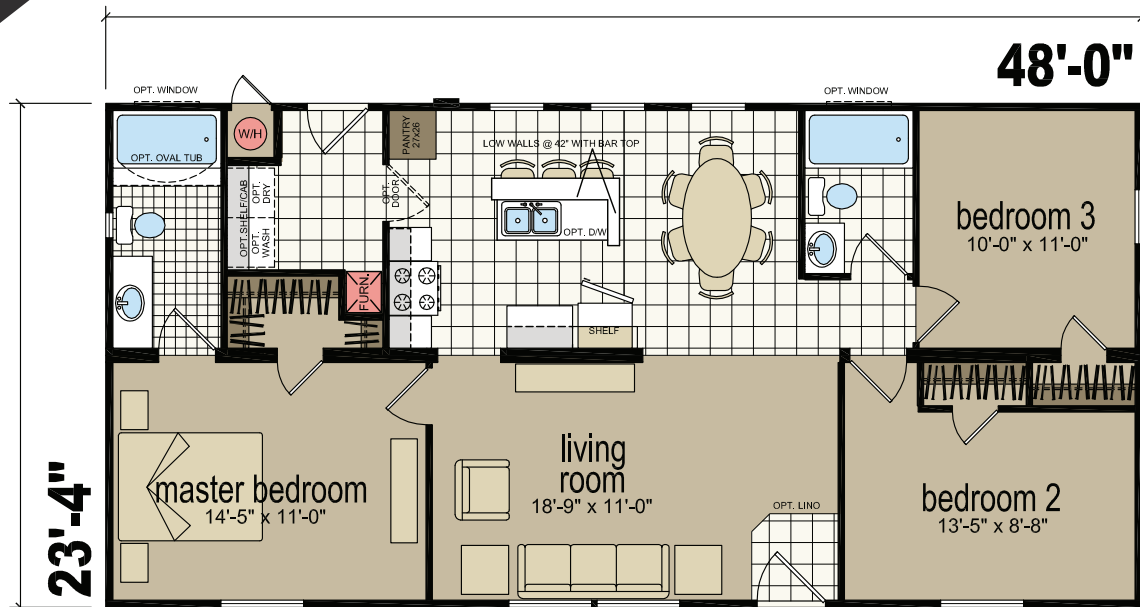
2 BED - 2 BATH
1213 SQ.FT.





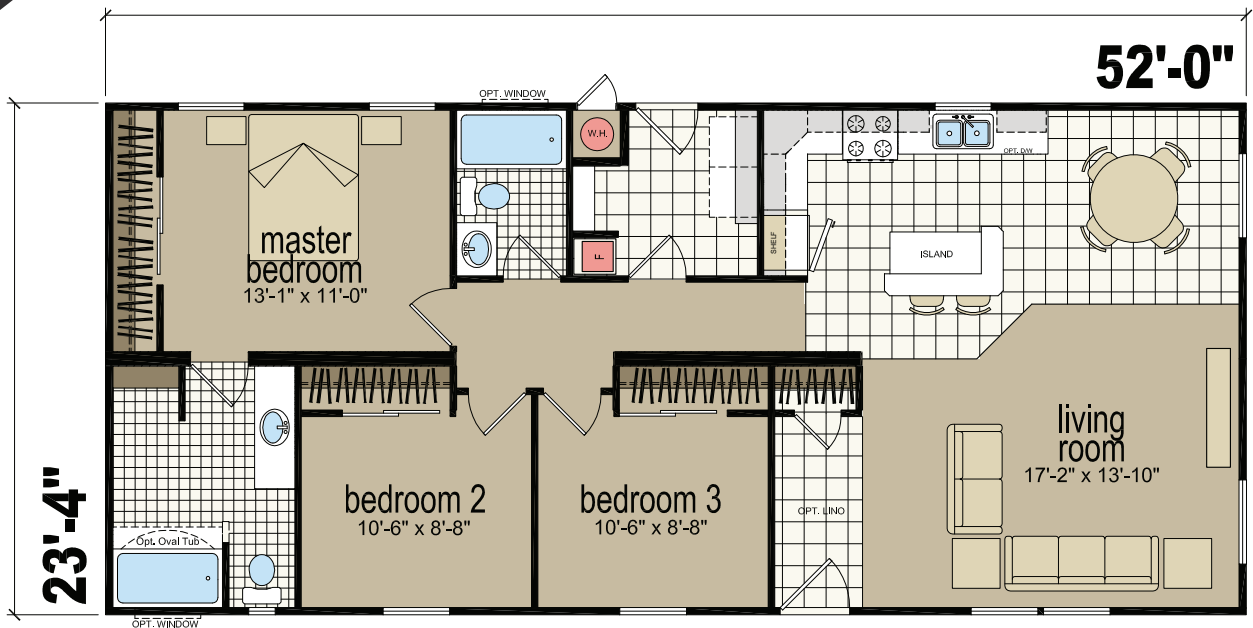
3483B

3 BED- 2 BATH
1120 SQ.FT.



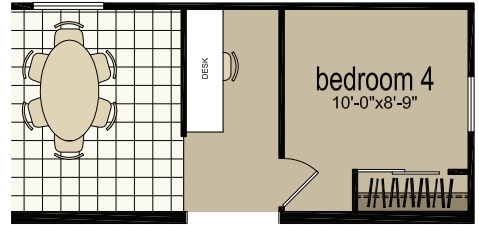
3523L

3 BED- 2 BATH
1213 SQ.FT.

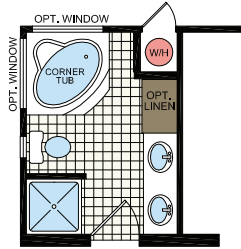


3563F

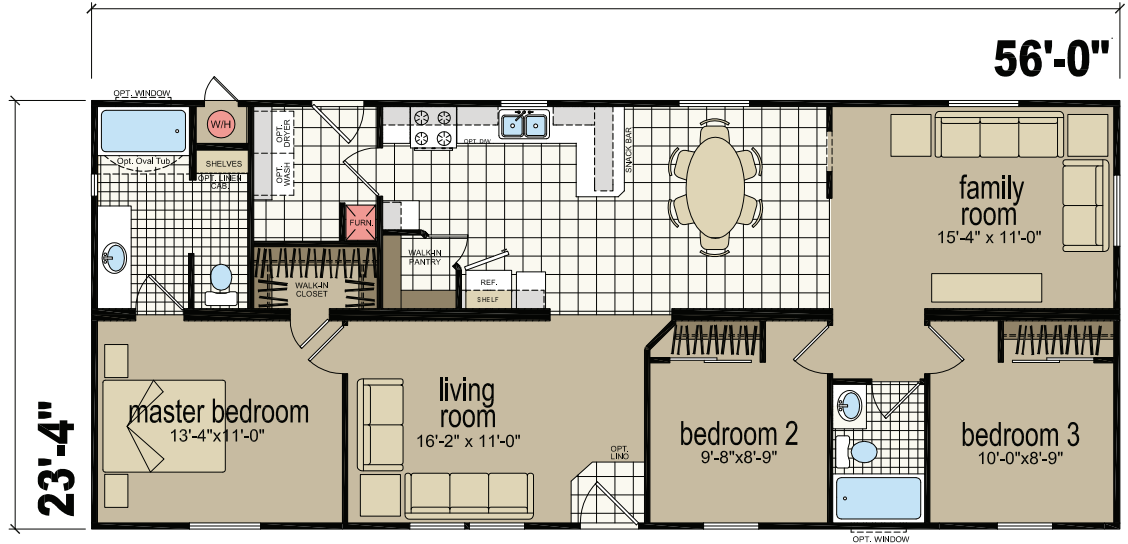
3 BED- 2 BATH
1306 SQ.FT.



4th BEDROOM OPTION

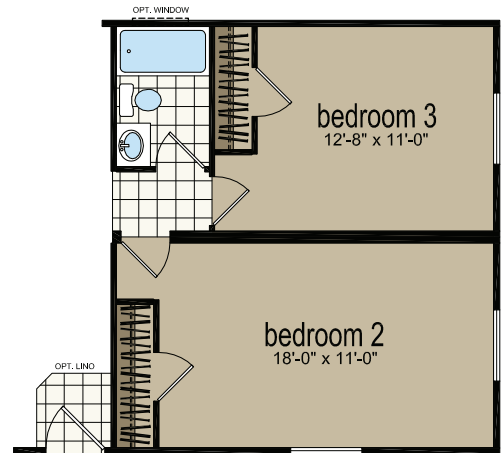


OPT.
GLAMOUR BATH

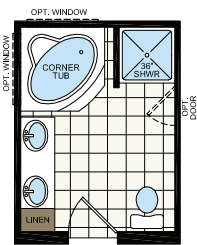


3603B

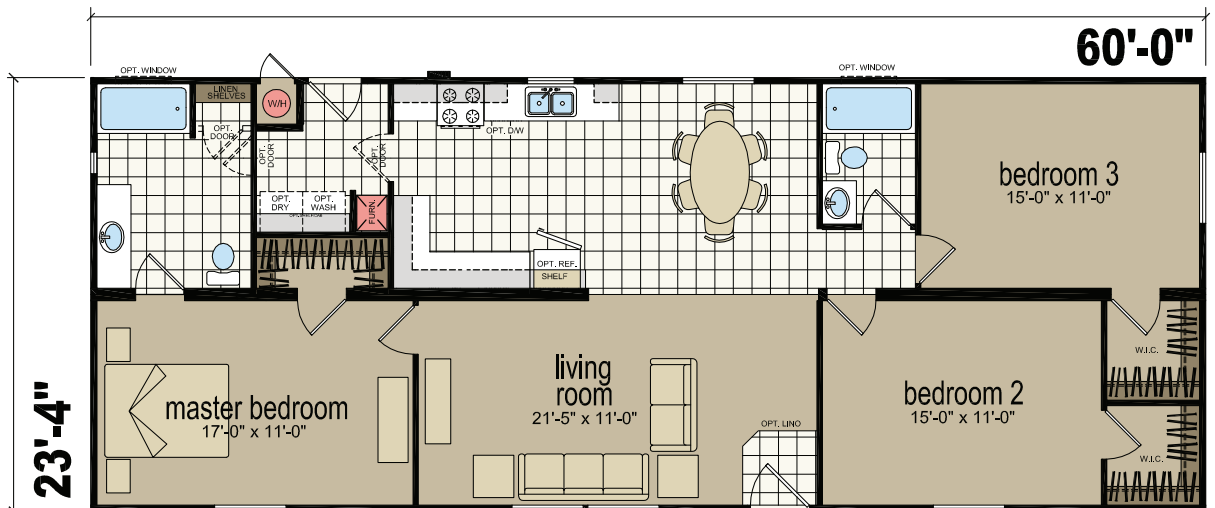
3 BED- 2 BATH
1400 SQ.FT.



OPT. BEDROOMS

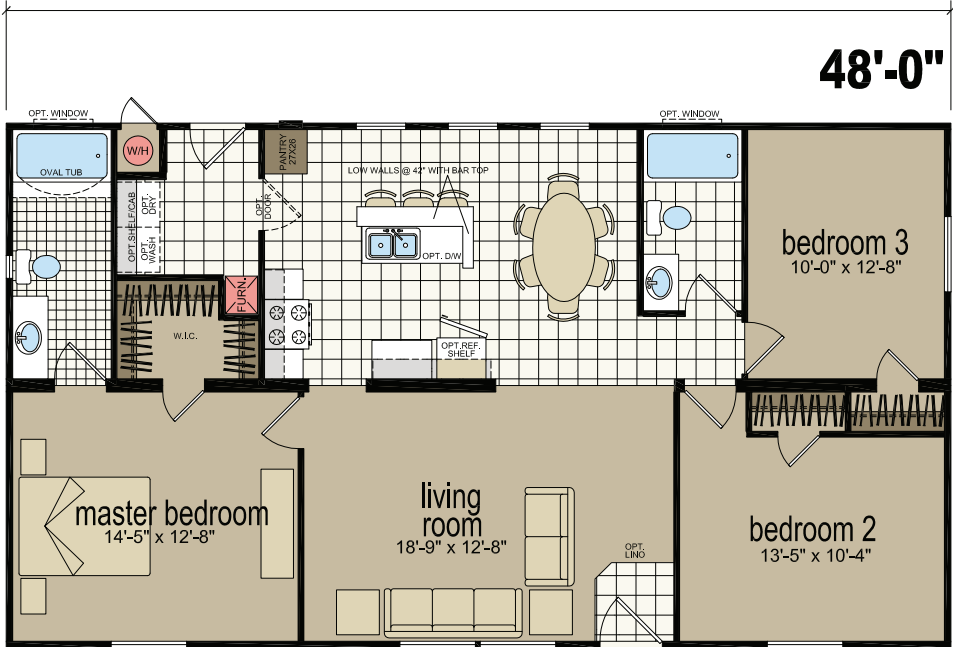


OPT. GLAMOUR BATH



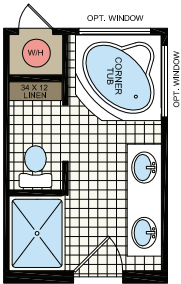
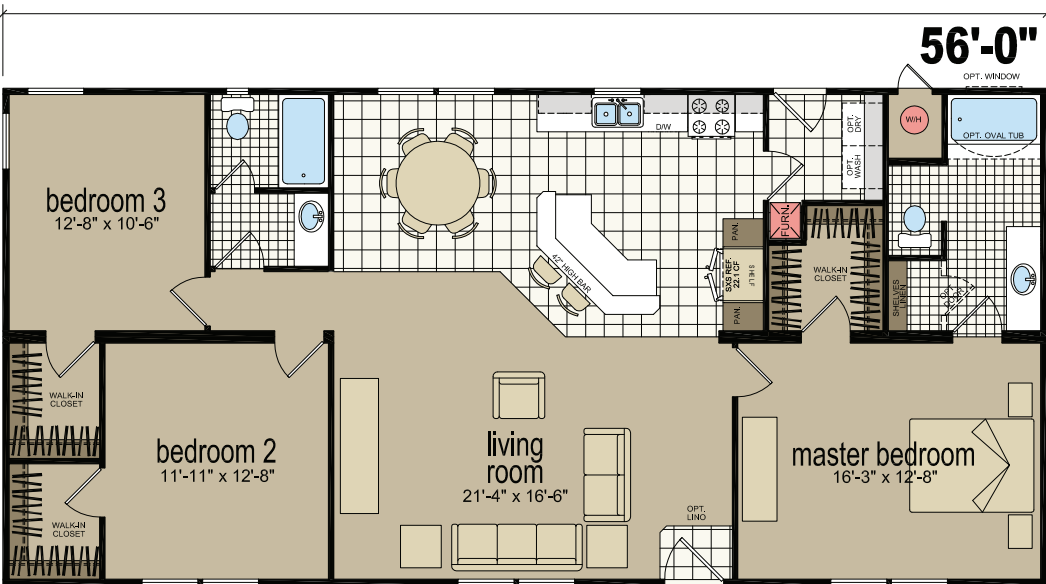
4483B

3 BED- 2 BATH
1280 SQ.FT.



4563M

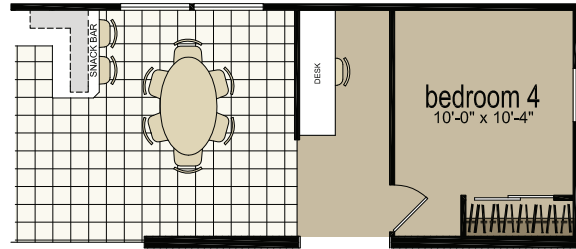
3 BED- 2 BATH
1494 SQ.FT.



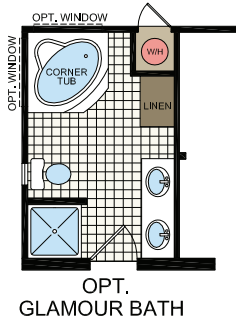
OPT. GLAMOUR BATH

4563S

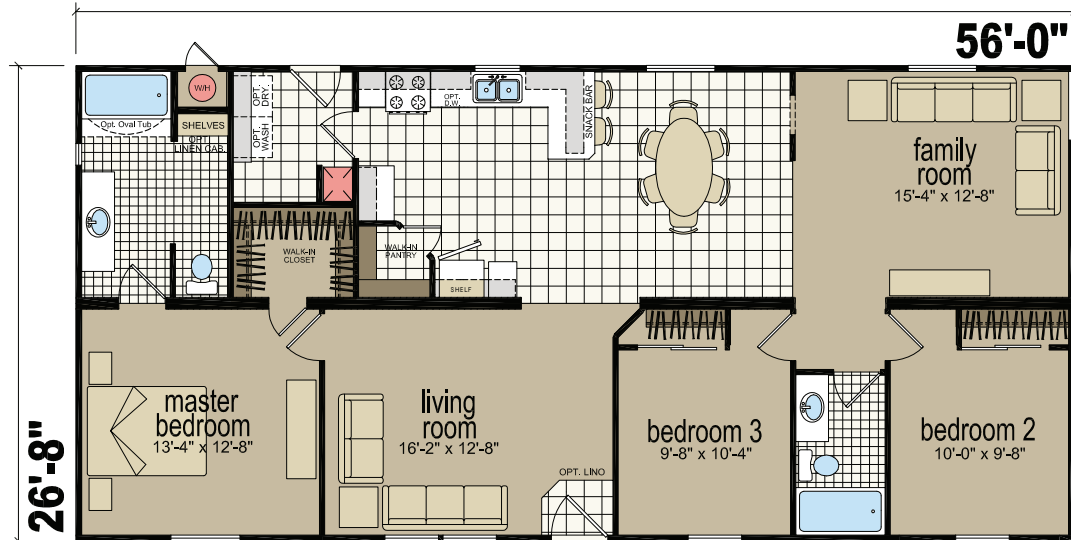
3 BED- 2 BATH
1494 SQ.FT.



OPT.BEDROOM#4

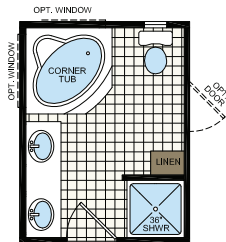


OPT. GLAMOUR BATH

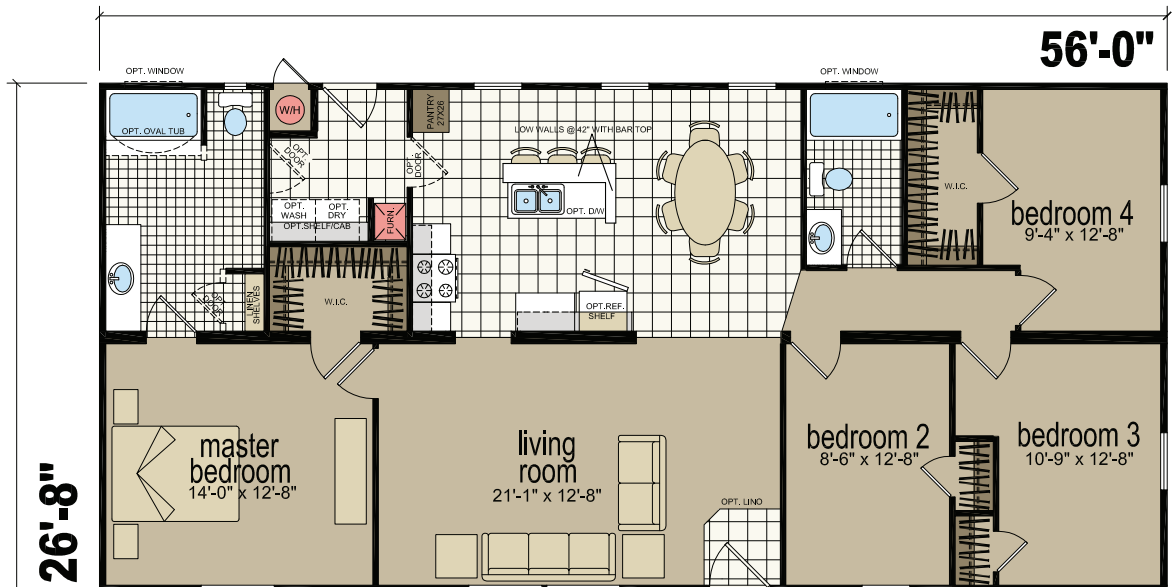


4564B

4 BED- 2 BATH
1494 SQ.FT.

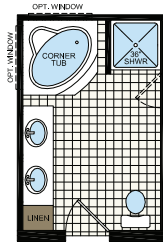


OPT. GLAMOUR BATH

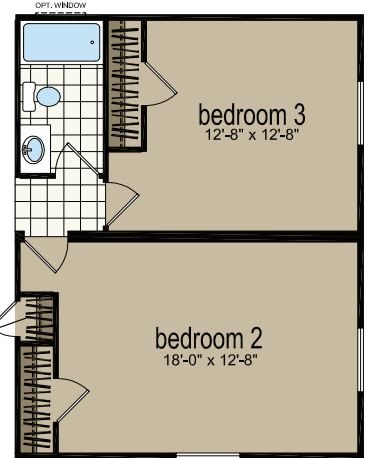
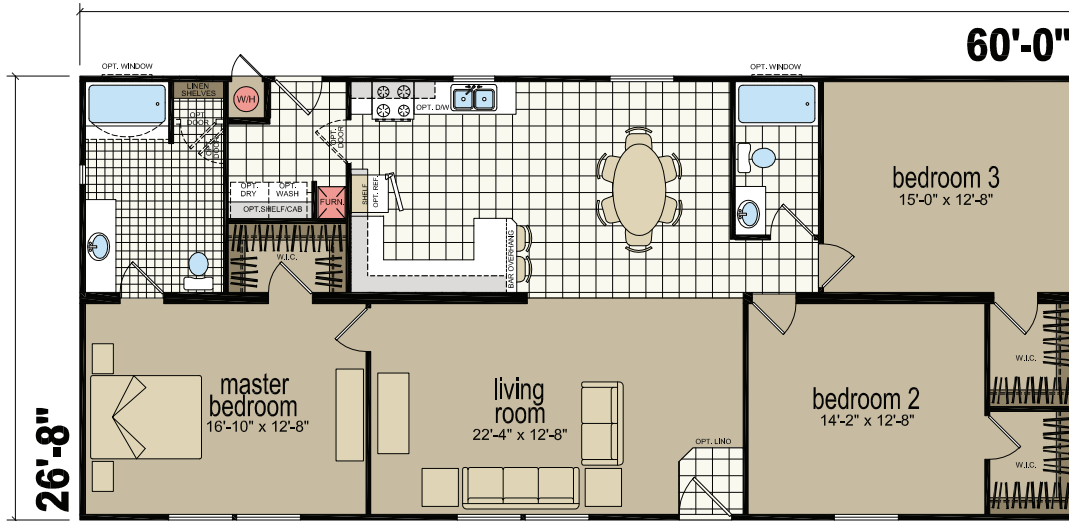


4603B

3 BED- 2 BATH
1600 SQ.FT.



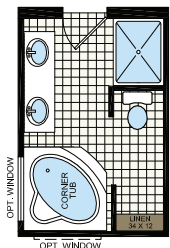
OPTIONAL GLAMOUR BATH



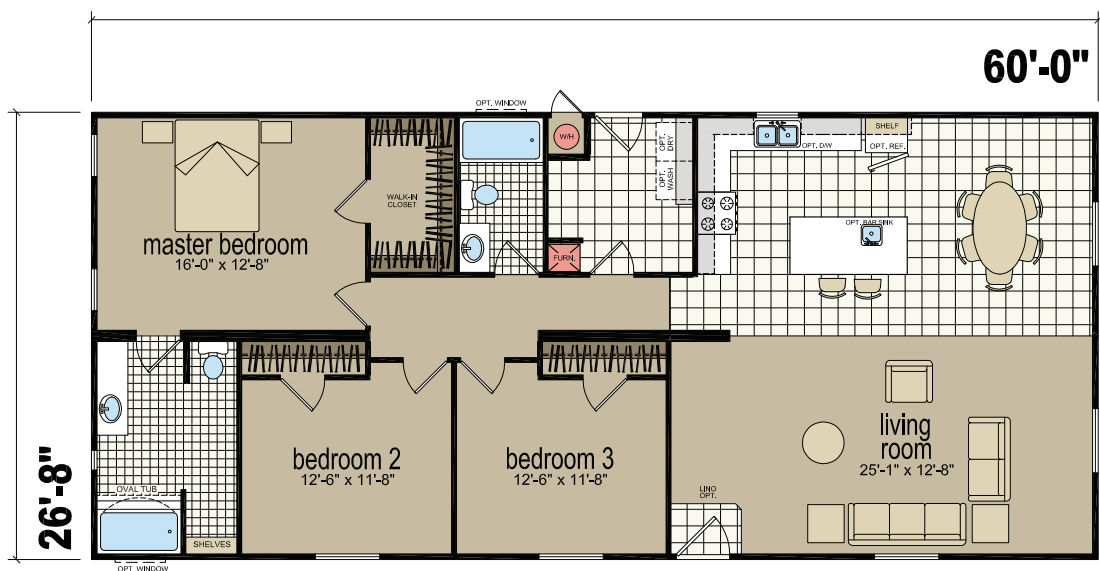
OPT. BEDROOMS

4603L

3 BED- 2 BATH
1600 SQ.FT.

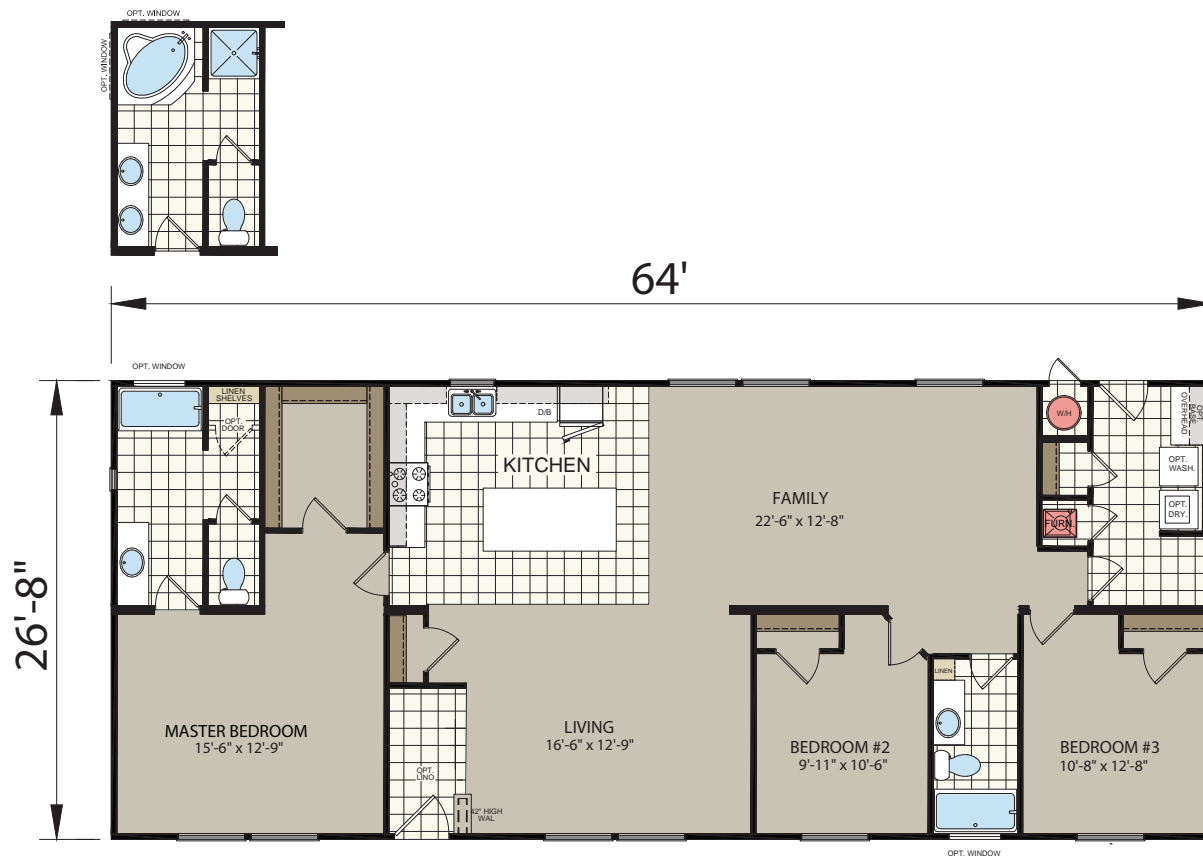


OPT. GLAMOUR BATH



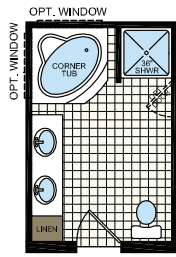
4643B

**3 BED- 2 BATH
1707 SQ.FT.**

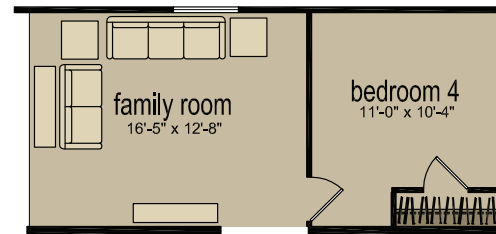
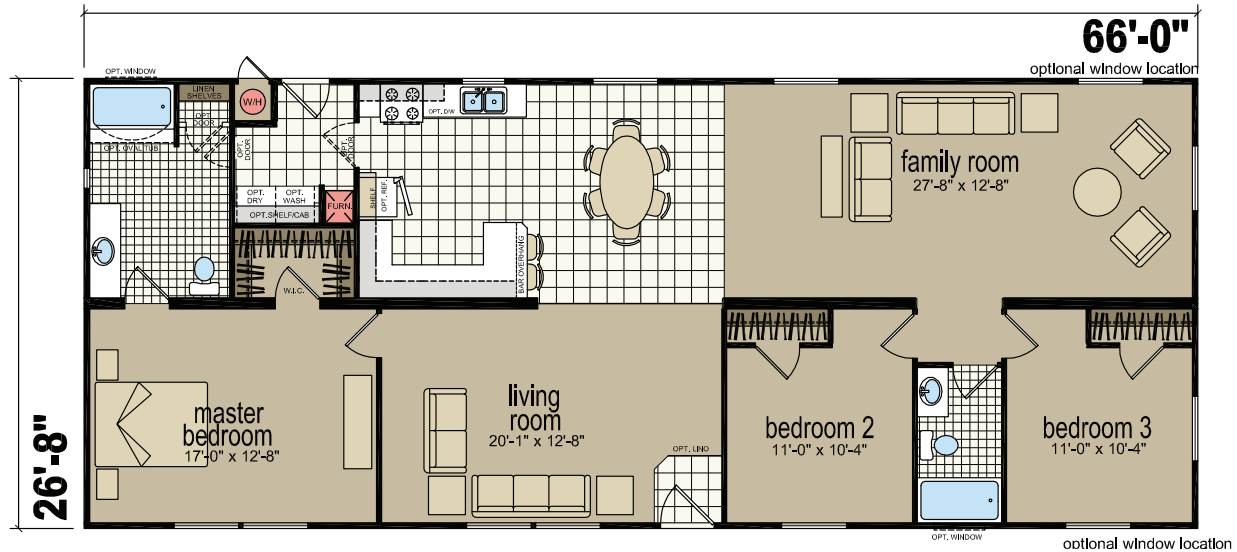


4663A

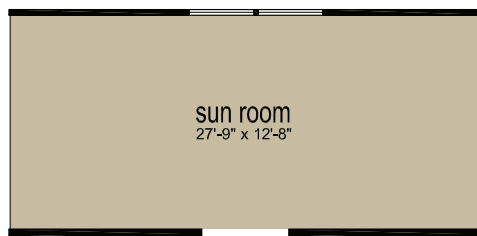
3 BED- 2 BATH
1760 SQ.FT.



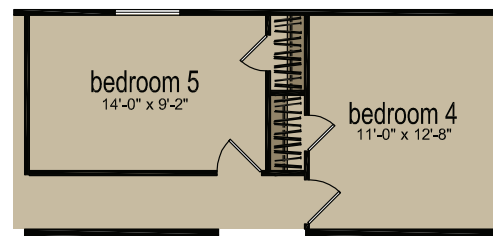
OPT. GLAMOUR BATH



OPTIONAL 4TH BEDROOM



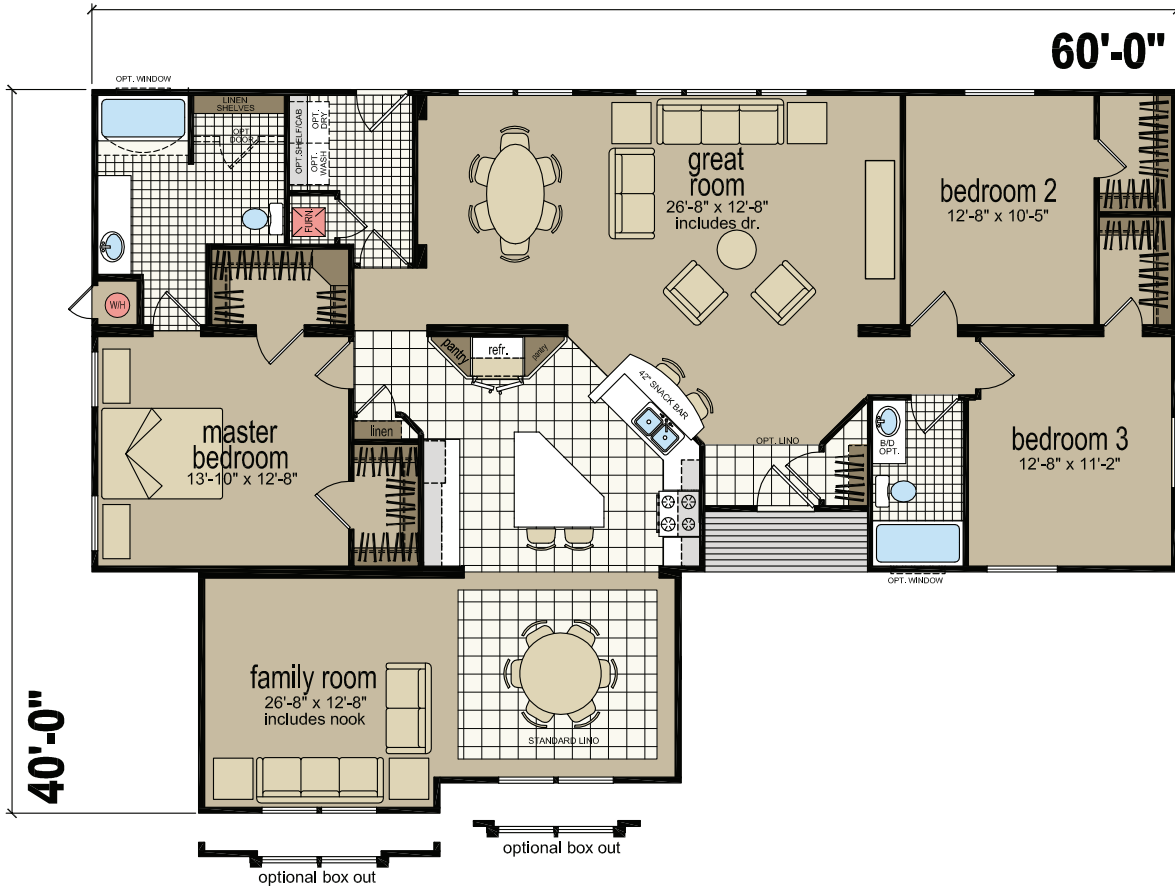
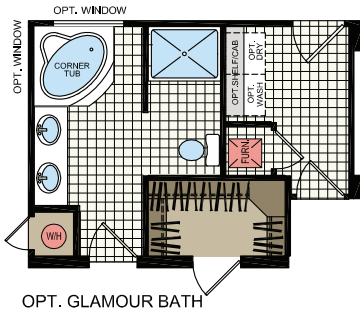
OPT. SUN ROOM



OPTIONAL 4TH AND 5TH BEDROOM

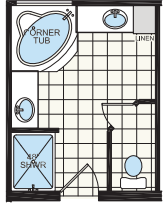
7623U

3 BED- 2 BATH
1904 SQ.FT.

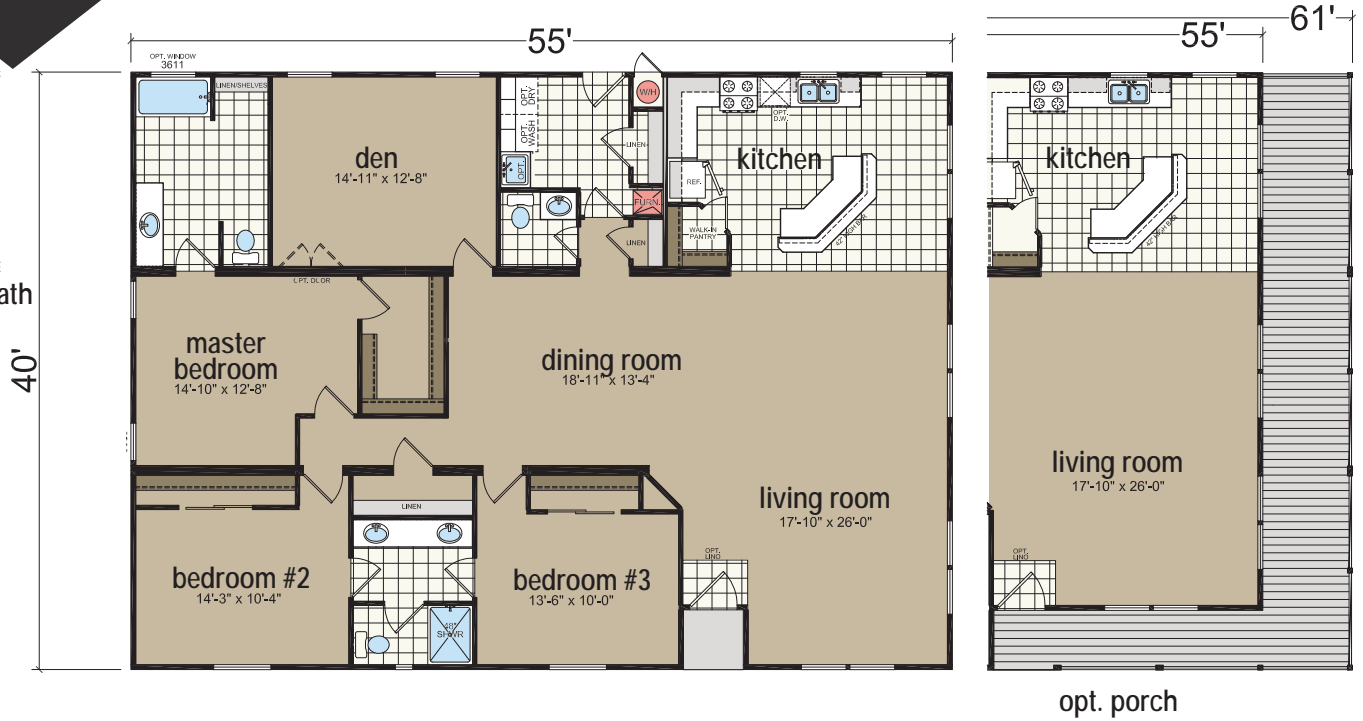


7533K

3 BED- 2.5 BATH
2000 SQ.FT.



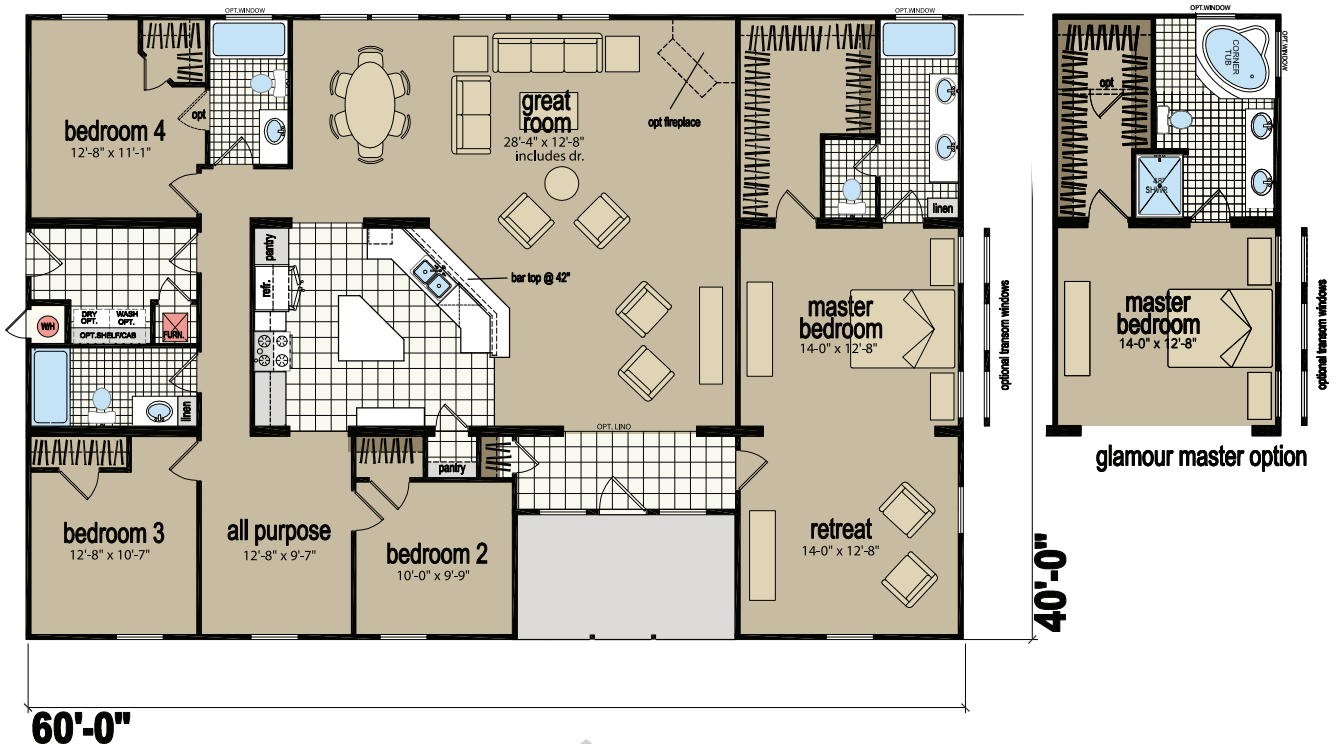
opt. glamour bath



opt. porch

7604B

4 BED- 3 BATH
2289 SQ.FT.



glamour master option

STANDARDS

CREEKSIDE MANOR STANDARDS

CONSTRUCTION

- 8' Flat Ceiling Throughout
- 12" Eaves Hitch End Only
- 20# Roof Load
- 2x4 Exterior Walls
- 2x6 Floor Joists 16" on Center
- 3/12 Roof Pitch
- 5/8" Tongue & Groove Floor Decking
- 6" Eaves Sides & Rear - 28' & 40' Wides Only
- Nominal Eaves Sides & Rear - All Except 28' & 40' Wides
- R-11 Floor Insulation
- R-13 Wall Insulation
- R-22 Ceiling Insulation

EXTERIOR

- 32" In-swing 6-Panel Rear Door
- 36" In-swing Steel Front Door
- 4" Cement Window Trim Throughout
- Cement Facia
- Cement Perforated Soffit
- Cement Vertical Siding
- Architectural Shingles
- Low "E" Dual Glaze Windows Throughout
- Shutters Hitch & Front Door Side - Single Wides Only
- Standard Front & Rear Porch Lights

PLUMBING/HEATING/ELECTRICAL/UTILITY

- 100 AMP Electrical Service
- 30 Gallon Electric Water Heater
- Carbon Monoxide & Smoke Detectors
- Cement Water Heater Door with Hinges
- Exterior GFI Receptacle
- Gas Forced Air Furnace
- Shutoff Valves Throughout
- 6" LED Can Lights Throughout
- Wire Shelf Over Washer & Dryer
- Wire & Vent for Electric Dryer

INTERIOR

- #6 Rebond Carpet Pad
- 3" Baseboard Molding in Wet Areas Only
- 6-Panel Interior Doors
- Brushed Nickel Lighting & Hardware Throughout
- Carpet in Closets Throughout
- Linoleum in Kitchen, Dining, Baths & Utility
- Simply Stated Carpet
- Standard Heat Registers Throughout
- T&T Throughout with Rounded Corners
- Wire Vented Shelving Throughout
- White 2-1/4" Door Case Molding

KITCHEN

- Granite Counters with Single Eased Edge
- 4" Granite Backsplash
- Stainless Steel Under-Mount Sink
- Lined Overhead Cabinets
- Brushed Nickel Faucet
- Bank of Drawers
- Flat Panel MDF Cabinet Doors
- Cabinet Above Refrigerator

APPLIANCES

- 18 CF Frost Free Refrigerator
- 30" Vented Range Hood with Light
- Deluxe Gas Range

BATHS

- Granite Counters with Single Eased Edge
- 4" Granite Backsplash
- Under-Mount Bath Sinks
- Brushed Nickel Faucets & Hardware
- 1-Pc Fiberglass Tub/Shower

UPGRADE PACKAGES

MEADOWVIEW ESTATES PACKAGE

(INCLUDES CREEKSIDE MANOR STANDARDS)

- 3" Baseboard Molding Throughout
- 32" 9-Light Cottage Rear Door
- 40 Gallon Gas Water Heater
- 5 Recessed Can Lights in Kitchen
- Adjustable Overhead Shelves
- Deluxe 5-Drum Dining Room Chandelier
- Deluxe Cabinet Molding
- Deluxe Front Porch Light
- Deluxe Window Trim - Hitch & Front Door Side
- High Rise Elongated Toilets
- Finished Base Cabinet Interiors
- Hardwood Flat Panel Cabinet Doors
- Lighting Over Bathroom Mirrors
- Metal Mini-Blinds Throughout
- Satin Nickel Lever Passage Door Handles
- Satin Nickel Single Lever Faucets Throughout
- Toe-Kick Heat Registers in Wet Areas
- Window Valances - Factory Select Per Print
- Wood Trim Around Bath Mirrors

NAPA ESTATES PACKAGE

(INCLUDES MEADOWVIEW ESTATES PACKAGE)

- 9' Flat Ceiling Throughout
- 11x36 Slider Window in Master & Guest Baths
- 2" Fauxwood Blinds Throughout
- 42" Overhead Cabinets
- 80" Windows Throughout
- Cabinet Over Washer & Dryer
- Craftsman Window Trim - Hitch & Front Door Side
- Macrame Carpet
- Wood Closet Rods & Shelves Throughout

Due to continuous product development and improvement, prices, specifications and material are subject to change without notice or obligation. Square footage and other dimensions are approximate. Included images are artist renderings and are not intended to be an accurate representation of the homes. Renderings and Floor Plans may be shown with optional features and / or third party additions that may not be available in all regions or situations. Exterior Renderings may include onsite builder built options not offered by Champion Home Builders, Inc.

Pacific Coast Little Lodges LLC

15711 HWY 101

Brookings Or. 97415

Janine Smith - Sales Representative - Brookings Office 503-577-8042

Shirley Chamberlain - Sales Field Representative 541-247-0962

License MSD 762

*** Bonded * Insured**

Since 2017

CHAMPION®
HOME BUILDERS

09185000