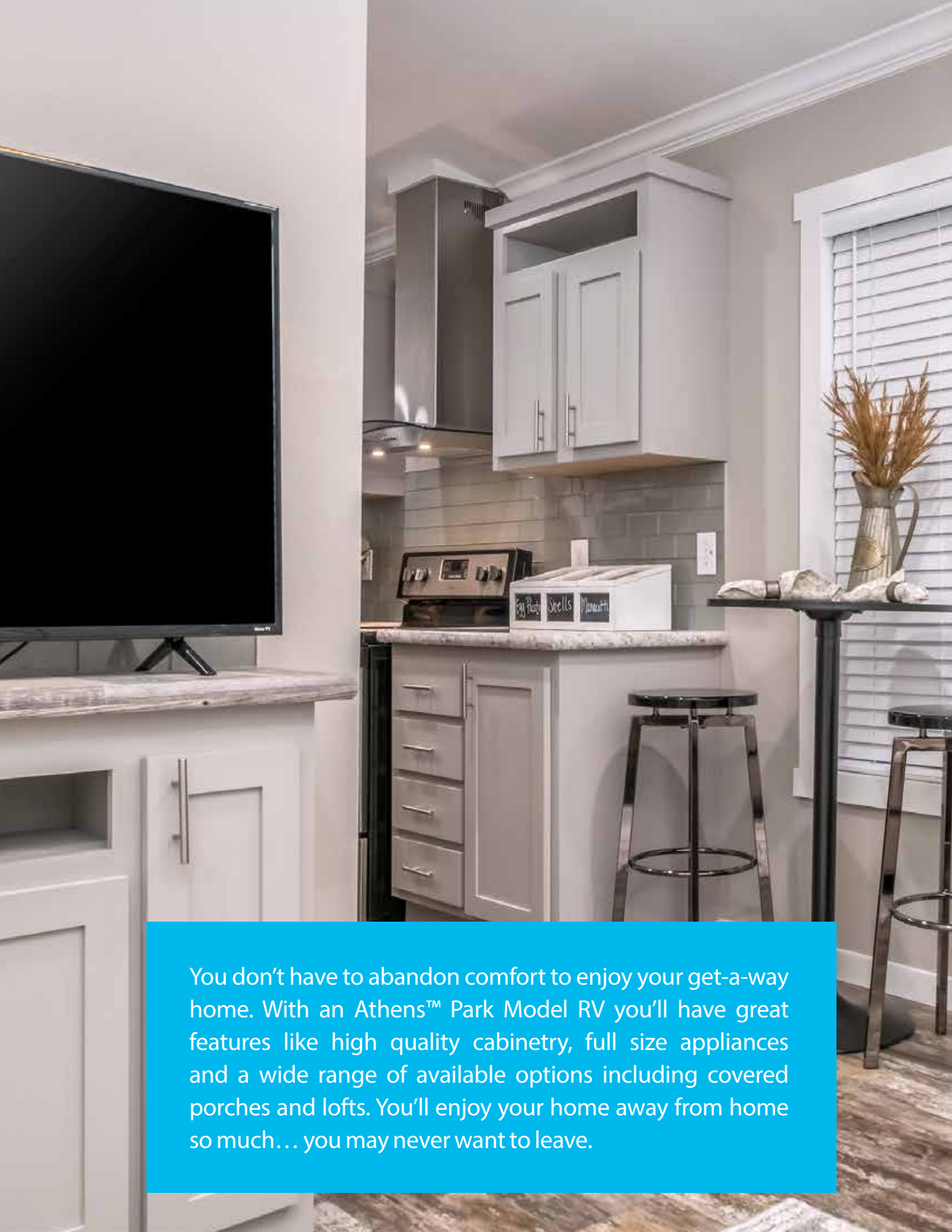




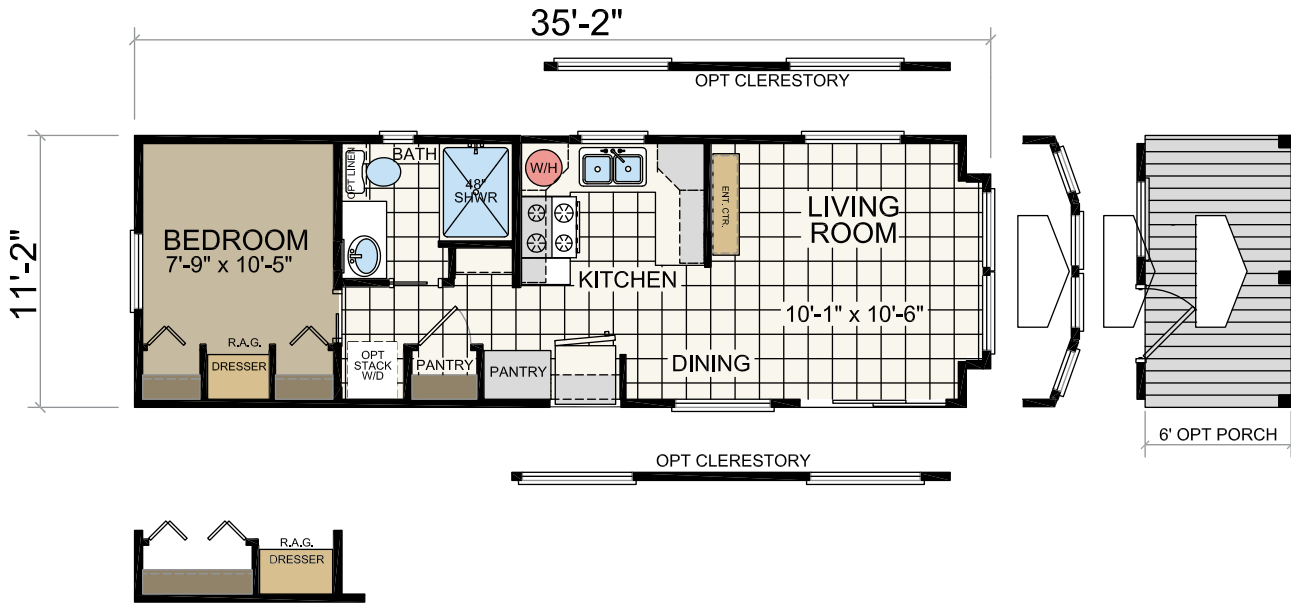
ATHENS™
PARK MODEL RVs

PARKMODEL
SERIES

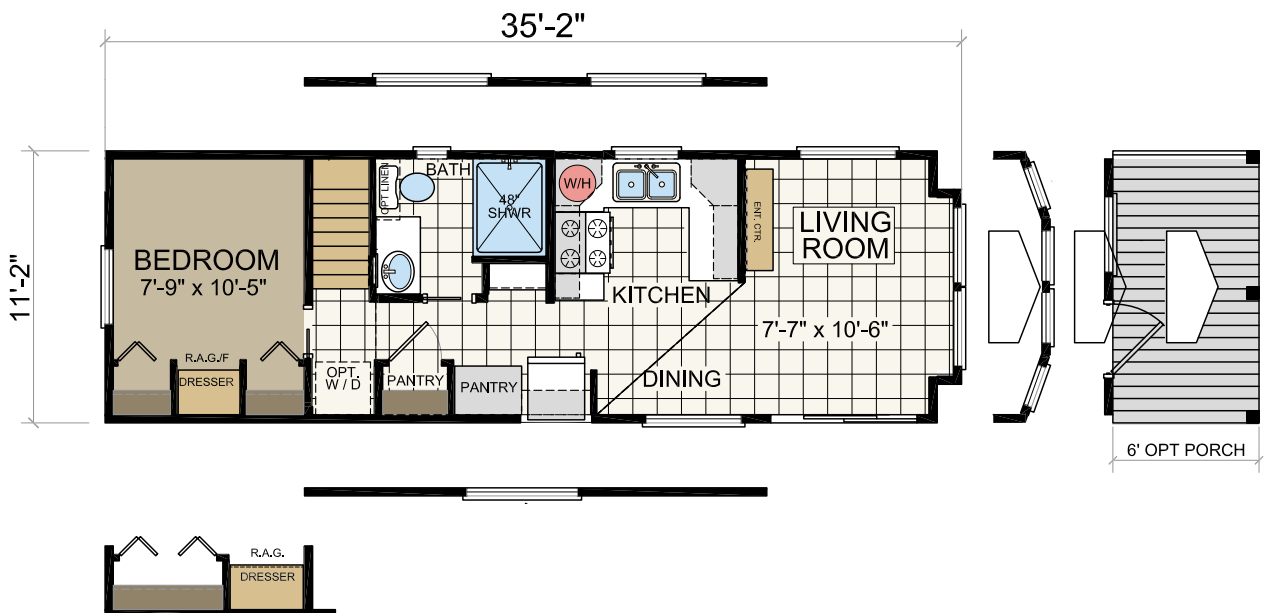


You don't have to abandon comfort to enjoy your get-a-way home. With an Athens™ Park Model RV you'll have great features like high quality cabinetry, full size appliances and a wide range of available options including covered porches and lofts. You'll enjoy your home away from home so much... you may never want to leave.

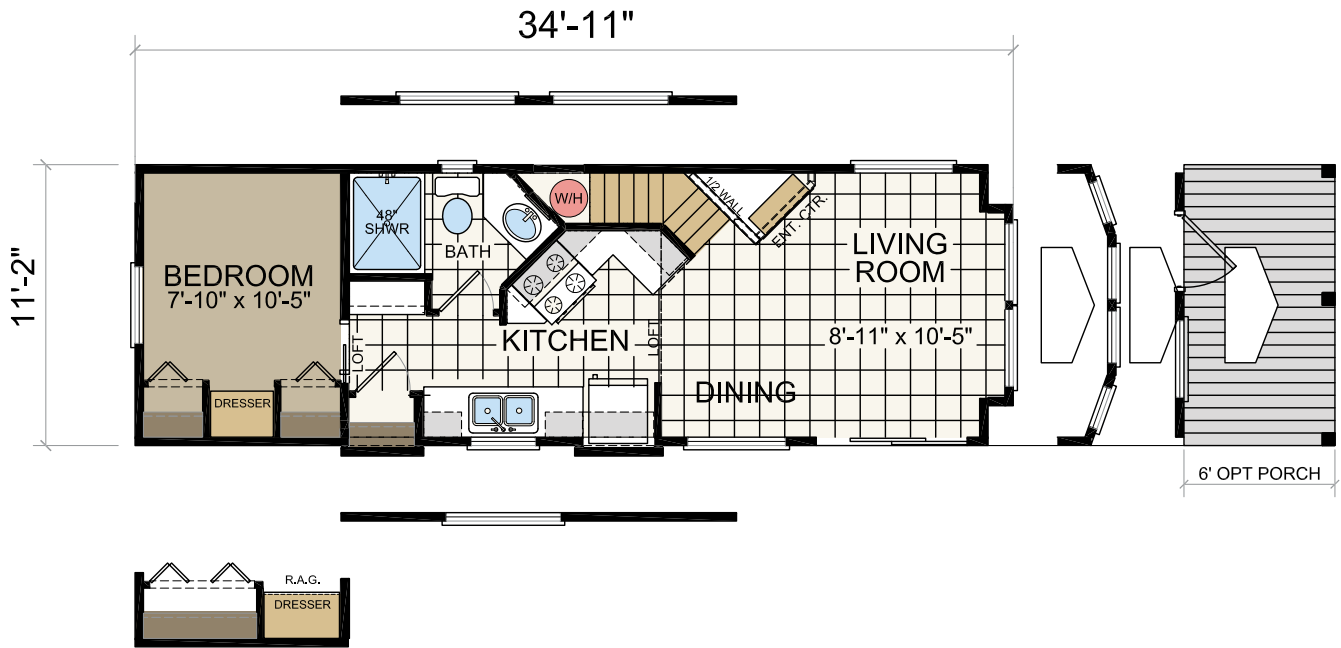
Model 504 | 11'-2" x 35'-2" | 1 bed-1 bath | 399 sq. ft.



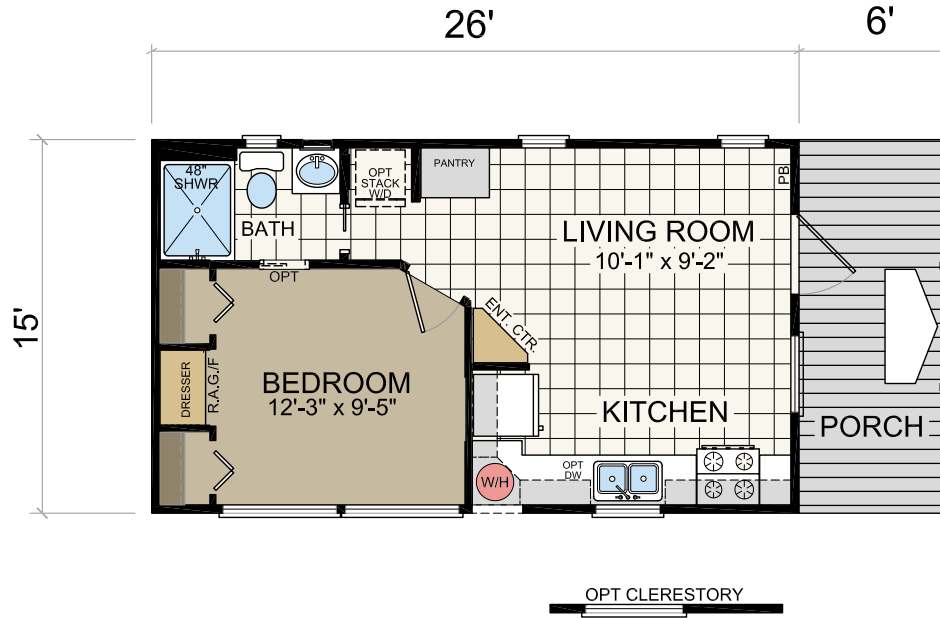
Model 504 LOFT | 11'-2" x 35'-2" | 1 bed-1 bath | 399 sq. ft.



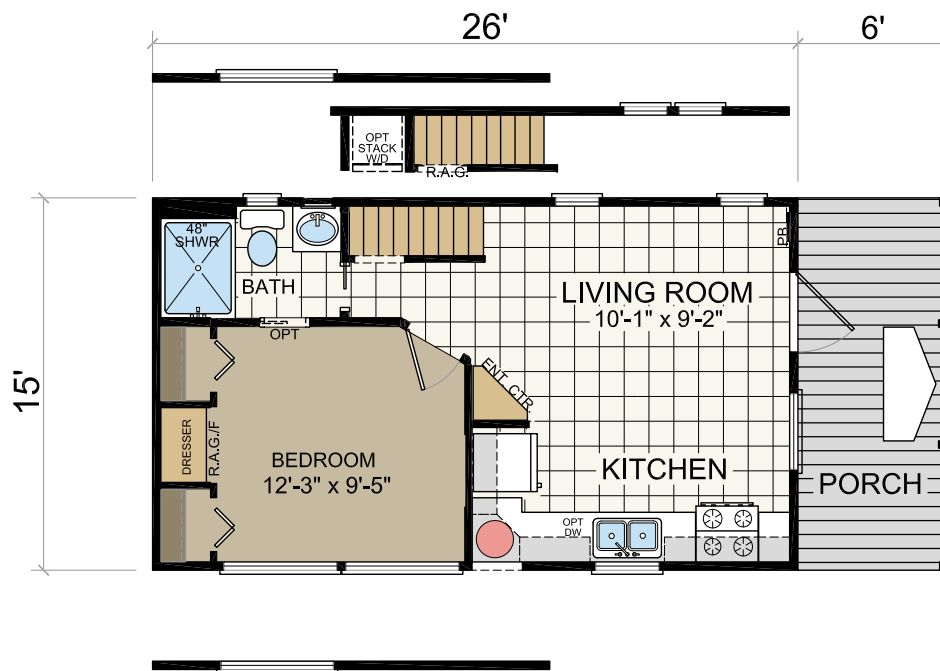
Model 509 LOFT | 11'-2" x 34'-11" | 1 bed-1 bath | 399.2 sq. ft.



Model 514 | 15' x 26' | 1 bed-1 bath | 398.6 sq. ft.

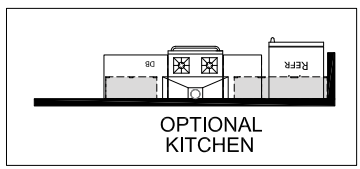
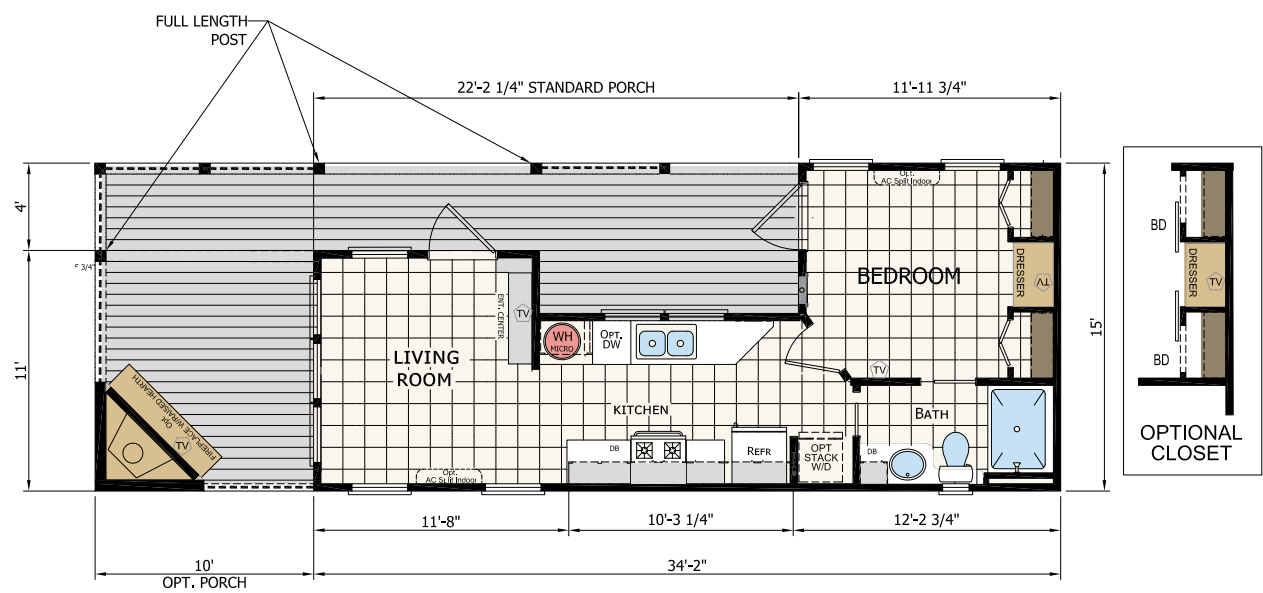


Model 514 LOFT | 15' x 26' | 1 bed-1 bath | 398.6 sq. ft.





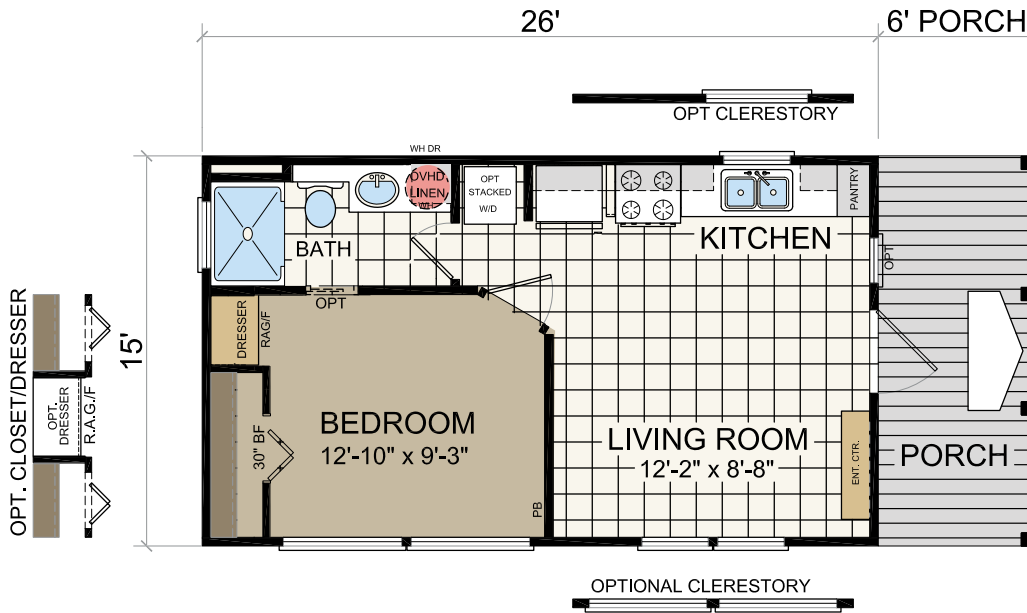
Model 520 | 15'-2" x 33'-6" | 1 bed-1 bath | 399.8 sq. ft.



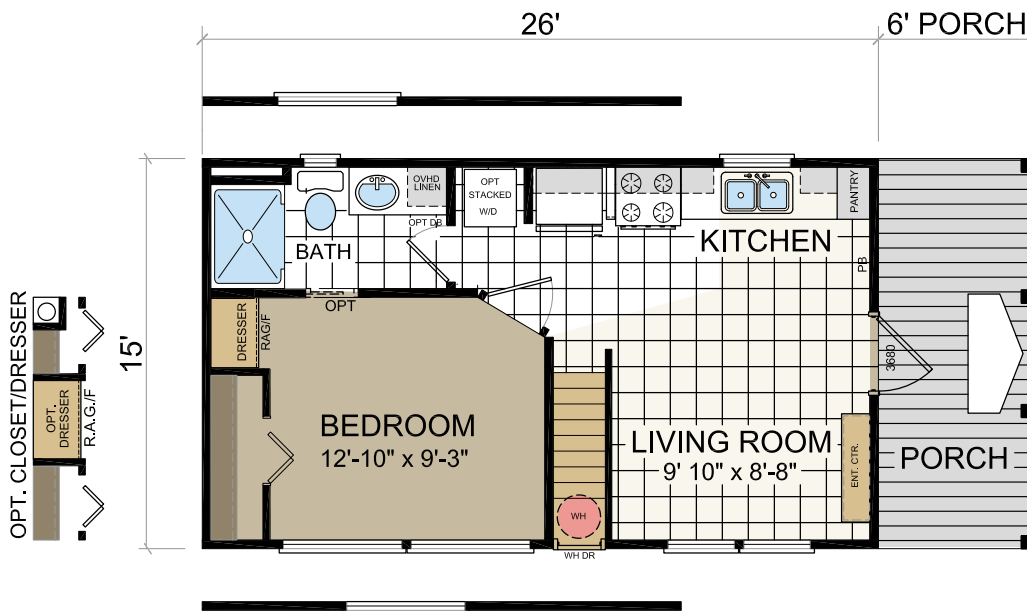
STANDARD PORCH = 123 sq.ft.
 OPTIONAL PORCH = 150 sq.ft.



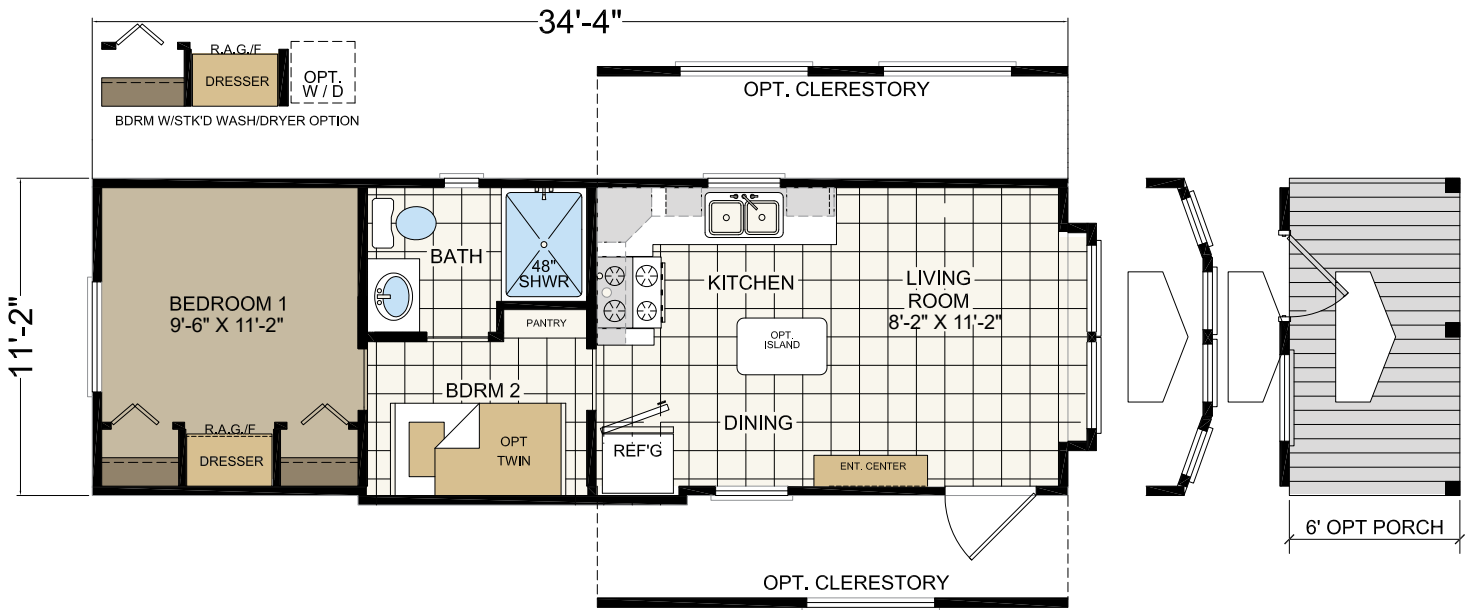
Model 522 | 15' x 26' | 1 bed-1 bath | 398.6 sq. ft.



Model 522 LOFT | 15' x 26' | 1 bed-1 bath | 398.6 sq. ft.



Model 529 | 11'-2" x 34'-4" | 2 bed-1 bath | 399 sq. ft.



ATHENS PARK SERIES

Standard Features

CONSTRUCTION

CODE - ANSI 119.5
 FLOOR JOISTS - 2x6 - 16" on Center
 STEEL I-BEAM - 10" I-beam with 99.5" Spread
 AXLES - 3
 SIDEWALL - 90" (2x4) - 16" on Center
 INTERIOR WALLS - 2x3 / 2x4 - 16" on Center
 EAVES - FRONT END & REAR END - Nominal 12" F & R
 SIDE EAVES - Nominal 4"
 PORCHES - Front (Std -Some Models) - per print
 FLOOR - 19/32" Tongue & Groove - OSB
 2-WINDOW BOX FRONT BAY - Std Most Models
 4-WINDOW ANGLED FRONT BAY- Optional
 SINGLE AND DOUBLE LOFTS - Available (509 std.)
 ROOF PITCH - Varies from 6/12-9/12 (except in loft areas)

THERMAL

WALL / FLOOR / ROOF INSULATION R-11/ R-11/ R-22

FLOOR COVERING

CARPET - BEDROOM - 25 Ounce
 CARPET PAD - 1/2" Rebond 8# Pad
 LINOLEUM - LIVING ROOM / DINING / KITCHEN / BATH -
 DiamondFlor™

BATH

SINKS - China
 VANITIES - 36" High
 FAUCETS - Single-Lever Brushed Nickel
 COUNTERTOP - Laminate
 COUNTERTOP BACKSPLASH - Tile
 COUNTERTOP EDGE - Laminate
 TOILET - ELONGATED - per plan
 TOWEL BAR / TISSUE HOLDER - Standard Installed
 BATH MIRROR - Mirrored Medicine Cabinet
 MEDICINE CABINET - Standard
 BATHTUB/SHOWER- 48" Fiberglass Shower w/Door - per plan

KITCHEN

SINKS - Stainless Steel
 FAUCETS - Brushed Nickel / Single-Lever w/ Sprayer
 COUNTERTOP BACKSPLASH - Tile
 RANGE - Full Size Gas
 RANGEHOOD - 30" Lighted
 REFRIGERATOR - 16'FF (select models)

PLUMBING / HEATING

FURNACE - 40,000 BTU Gas Furnace - per print
 WATER HEATER - 20 Gallon Electric - Exterior Door
 DUCTWORK AND VENTS - Floor / Toe Kick in Cabinets
 WATER SHUT-OFF VALVES - Standard

UTILITY

PLUMB/WIRE FOR WASHER & DRYER - Optional (some models)

CABINETS

CABINET DOOR / STILES - Hardwood Autumn Brown
 BASE CABINET SYSTEM - Drawer Over Door
 DRAWER GUIDES - Deluxe Drawer Guides
 FLIP DOWN SINK TRAYS IN KITCHEN - Standard
 OVERHEAD LINED CABINETS THROUGHOUT - White
 CENTER SHELVES OVERHEAD - Adjustable
 BASE CABINETS - Fixed Center Shelf
 REFRIGERATOR CABINET - Standard
 GLASS INSERTS IN OVERHEAD CABINETS - Optional

INTERIOR

WALL COVERINGS - 1/2" Sheet Rock
 TAPE & TEXTURE - Standard w/ Bull Nose Corners
 INTERIOR PAINT - Eggshell Off White
 CEILING - Tape and Texture
 HARDWARE - Brushed Nickel
 POCKET DOORS - Standard (some models)
 PANTRY/CLOSET SHELVING - Vented Metal Shelves
 CEILING TRIM - Optional
 WINDOW TRIM - #356 White Craftsman
 DOOR TRIM - #356 White Craftsman
 INTERIOR DOORS - Raised 2-Panel
 BASEBOARD - #356 White Craftsman Throughout

ELECTRICAL

100 AMP BOX - 50 AMP SERVICE - Standard
 POWER CORD - Standard on 50 AMP
 100 AMP SERVICE (NO POWER CORD) - Optional
 WATER HEATER SHUT OFF SWITCH - KITCHEN - Standard
 EXTERIOR RECEPTACLE - 1 Standard
 HEAT TAPE RECEPTACLE BY WATER INLET - 1 Standard
 READING LIGHT OVER NIGHTSTAND - Optional
 AC DISCONNECT - NA
 CEILING FAN - Optional
 LIGHT SWITCHES - Rocker
 PHONE & TV JACKS RACEWAYS - Optional
 WIRE & BRACE FOR CEILING FAN - Optional

LIGHTING

DINING ROOM - 4" LED Can Light
 MASTER BATH - Satin Nickel Bar Light & 4" LED Can Light*
 LIVING ROOM - Switched Controlled Receptacle
 BEDROOMS ALL - 11" Pan Light/Brushed Nickel
 KITCHEN - 4" LED Can Light
 FRONT EXTERIOR LIGHT - Black Lantern Type
 REAR EXTERIOR LIGHT - Black Lantern Type

EXTERIOR

FACIA - LP® SmartPanel®
 SOFFIT - Vented LP
 SHINGLES - Architectural
 SIDING - Cement Siding
 SIDING BACKER - House Wrap
 EXTERIOR WINDOW TRIM - 4" LP® SmartPanel® Trim
 CLERESTORY DORMERS - Optional
 FRONT & REAR PORCHES - Front (Std-Some Models) per print
 PORCH DECKING W/ STD OR OPT - Cedar
 PORCH RAILS AND POSTS - Cedar
 FRONT DOOR - 36x80 Steel 9-Lite Outswing or SGD - per print
 REAR DOOR - RV Type - Some Models - per print

WINDOWS

WINDOWS - Non-Gridded Dual Pane Single Hung Low E
 PENTAZOID WINDOW ON HITCH END - Standard - per print
 WINDOW TREATMENT - Cornice Boxes
 MINI BLINDS - 2" Fauxwood Blinds
 VERTICAL BLIND AT PATIO DOOR - Standard - per model
 WINDOW SILLS/FACING - Wrapped Casement Style

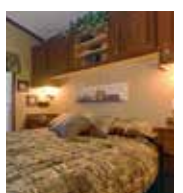
OTHER

FIRE EXTINGUISHER - Standard
 SMOKE DETECTORS / CO2 DETECTOR - Standard
 TIE-DOWN STRAPS - 3 on each side

*Some features are unavailable with loft models.

Prices and specifications are subject to change without notice.

Due to continuous product development and improvement, prices, specifications, and materials are subject to change without notice or obligation. Square footage and other dimensions are approximate. Exterior images may be artist renderings and are not intended to be an accurate representation of the home. Renderings, photos and floor plans may be shown with optional features or third-party additions.



ATHENS™ PARK MODEL RVs

PO Box 190
1425 Sunnyside Rd
Weiser, ID 83672

www.athensparkmodelrvs.com

CHAMPION®
HOME BUILDERS