

BED/BATH	SQ FT	RENTAL RATE	Water, sewer & trash fees included in rental rate
2 X 1.5	1,052	\$569 • \$746 • \$924	
3 X 2	1,274/1,303	\$643 • \$848 • \$1054	

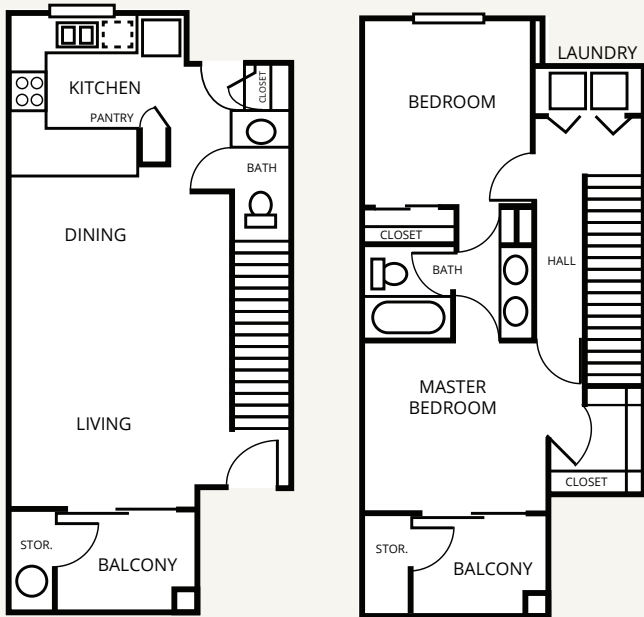
## INCOME GUIDELINES

Income restrictions apply. Minimum income requirement is 2.5 times the monthly rental rate.

2 BR	3BR	1 person	2 persons	3 persons	4 persons	5 Persons	6 persons
\$569	\$643	\$22,120	\$25,280	\$28,440	\$31,600	\$34,160	\$36,680
\$746	\$848	\$27,650	\$31,600	\$35,550	\$39,500	\$42,700	\$45,850
\$924	\$1,054	\$33,180	\$37,920	\$42,660	\$47,400	\$51,240	\$55,020

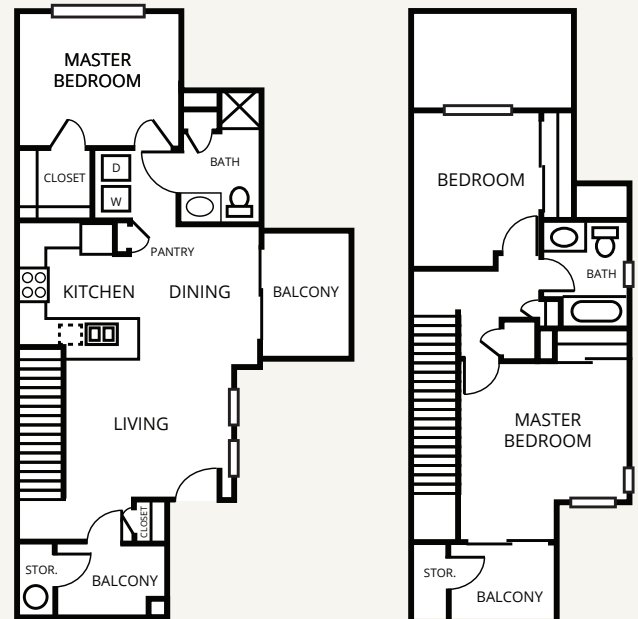
### 2BR/1.5BA TOWNHOME

1,052 Sq Ft



### 3BR/2BA TOWNHOME

1,274/1,303 Sq Ft



## APPLICATION FEE

\$35.00 per person over the age of 18 and must be paid by **MONEY ORDER**. Application submission is by appointment only.

## DEPOSITS

Two Bedroom                \$400 Refundable  
 Three Bedroom             \$500 Refundable

## ALL HOMES INCLUDE

- 9ft Ceilings
- All Electric Kitchen
- Cable Ready
- Carpeted Floors
- Ceiling Fans
- Central Air/Heating
- Covered Parking
- Full Size Washer/Dryer Connections
- Private Balcony or Patio
- Some Paid Utilities
- Vinyl Floors
- Vertical Blinds

## LEASE TERMS

12 months only.

## PET POLICY/DEPOSIT

No pets allowed.

## COMMUNITY AMENITIES

- Assigned Parking
- Beautiful Landscaping
- Business Center
- Children’s Play Area
- Disability Access
- Easy Access to Highways and Shopping
- Free Wi-Fi in the Business Center
- On-site & On-call Maintenance
- Picnic Area with Barbecue
- Public Parks Nearby

