

The 16 fishable ponds are located in 4 areas of St. James - **Regency (7)**, **Founders (3)**, **Woodlands (2)**, and **Seaside (4)**

REGENCY - Pond #4. Regency Circle Pond SW

DIRECTIONS: Enter Regency Gate; at roundabout continue on Regency Crossing Drive; Regency Circle Pond SW is the first pond on the right.

POA-DESIGNATED ACCESS: Fishing is permitted only on the street side of the pond that parallels Regency Crossing Drive. No trespassing on homeowner properties.

PARKING: Shoulders on Regency Crossing Drive.



REGENCY - Pond #147. Regency Crossing Pond

DIRECTIONS: Enter Regency Gate; at roundabout continue on Regency Crossing Drive; Regency Crossing Pond is the second pond on the left.

POA-DESIGNATED ACCESS: Fishing is permitted only on the street side of the pond that parallels Regency Crossing Drive. No trespassing on homeowner properties.

PARKING: Shoulders on Regency Crossing Drive.



FOUNDERS - Pond #92. Loblolly Circle Pond

DIRECTIONS: Going South on Saint James Drive, after the Polly Gully Bridge turn right on Trailwood Drive then turn first right on Loblolly Circle.

POA-DESIGNATED ACCESS: Fishing is permitted on the whole pond.

PARKING: Street parking is permitted. Be courteous. Don't block driveways.



SEASIDE - Pond #216. Oceanic Drive Pond

DIRECTIONS: Going East on Oceanic Drive from the Seaside Gate, the pond is on the right between West Seagrass Court and Moss Hammock Wynd.

POA-DESIGNATED ACCESS: Fishing is permitted on street access. Fishing is NOT permitted on private property. No fishing during scheduled model sail boating events.

PARKING: Shoulder parking on Oceanic Drive and West Seagrass Court. DO NOT park on Shell Isle Drive.



REGENCY - Pond #5. Regency Circle Pond NW

DIRECTIONS: Enter Regency Gate; pond is on right before roundabout. At roundabout turn right on Skeffington Ct. or continue on Regency Crossing Dr.

POA-DESIGNATED ACCESS: Access to the right of roundabout. Fishing is permitted only on the street side of the pond that parallels Regency Crossing Dr. No trespassing on homeowner properties.

PARKING: Shoulders on Regency Crossing Dr. or Skeffington Ct.

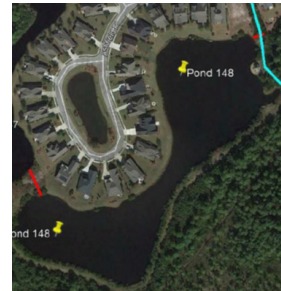


REGENCY - Pond #148. Ashfield Place Pond

DIRECTIONS: Enter Regency Gate; at roundabout continue on Regency Crossing Drive; turn left on Wyckford Lane; turn second left on Ashfield Place, drive to tree-lined walking path on right; Ashfield Pace Pond is on the right.

POA-DESIGNATED ACCESS: Fishing is permitted on the back side of the pond or gazebo deck. No trespassing on homeowner properties.

PARKING: Shoulders on Ashfield Place.



FOUNDERS - Pond #110. Gauntlet Drive Pond

DIRECTIONS: Going south on St. James Drive Turn right on Gauntlet Drive (before Waterway Park). Pond 110 is the first pond on the right (approximately 400 ft).

POA-DESIGNATED ACCESS: Fishing is permitted on POA property. Fishing is NOT permitted on private property.

PARKING: Shoulder parking on Gauntlet Drive.



SEASIDE - Pond #233. Oceanic-Moss Hammock Wynd Pond

DIRECTIONS: Going east on Oceanic Drive from the Seaside gate, the pond is the first one on the right as you pass Moss Hammock Wynd.

POA-DESIGNATED ACCESS: Fishing is permitted on the street side and west end of the pond.

PARKING: Park on the shoulder of Oceanic Drive.



REGENCY - Pond #141. Regency Circle Pond NE

DIRECTIONS: Enter Regency Gate; Regency Circle Pond NE is the first pond on the left before the roundabout.

POA-DESIGNATED ACCESS: Fishing is permitted only on the arm of the pond that parallels Regency Crossing Drive. No trespassing on homeowner properties.

PARKING: Shoulders on Regency Crossing Drive or Devonswood Drive.

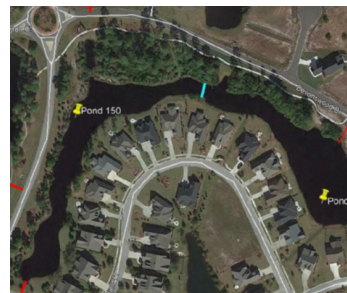


REGENCY - Pond #150. Regency Circle Pond SE

DIRECTIONS: Enter Regency Gate; at roundabout continue on Regency Crossing Drive; Regency Circle Pond SE is the first pond on the left.

POA-DESIGNATED ACCESS: Fishing is permitted only on the street side of the pond that parallels Regency Crossing Drive. No trespassing on homeowner properties.

PARKING: Shoulders on Regency Crossing Drive.



FOUNDERS - Pond #42. Founders Club Pond

DIRECTIONS: Enter St. James Drive Gate; continue on St. James Drive until you pass Lakeside Commons Drive on the left; Founders Club Pond is on the left.

POA-DESIGNATED ACCESS: Fishing is permitted on the street side of the pond that parallels St. James Drive. No trespassing on golf course or homeowner properties.

PARKING: Tree line along St. James Drive and adjacent to the pond.



SEASIDE - Pond #237. Oceanic at Oceanic Bay Pond

DIRECTIONS: Going east on Oceanic Drive from the Seaside gate, the pond is the first one on the left as you pass Oceanic Bay Drive.

POA-DESIGNATED ACCESS: Fishing is permitted on the Oceanic Drive side of the pond. Fishing is not permitted on private property.

PARKING: Park on the shoulder of Oceanic Drive.



REGENCY - Pond #10. Prince Regent Pond

DIRECTIONS: Enter Regency Gate; at roundabout continue on Regency Crossing Drive and pass fitness club entrance on right; Prince Regent Pond is first pond on the left.

POA-DESIGNATED ACCESS: Fishing is permitted on all areas surrounding the pond.

PARKING: Shoulders on Prince Regent Court.



WOODLANDS - Pond #181. Woodlands Circle

DIRECTIONS: Go south on Pine Forest Dr. from Seaside Gate through the Woodlands Park traffic circle, then first right on Park Ridge Drive. Pond is first one on the right between the traffic circle and Oak Forest Drive.

POA-DESIGNATED ACCESS: Fishing is permitted on street access. Fishing is NOT permitted on private property. Be careful walking in the Showcase planting area to prevent damage.

PARKING: Shoulder parking on Parkridge Drive and Oak Forest.



WOODLANDS - Pond #212. Woodlands Park Pond

DIRECTIONS: Enter Seaside Gate; at roundabout, exit on Pine Forest Drive; at next roundabout, exit on Parkridge Drive; cross covered bridge; Woodlands Park Pond is on the right by the amphitheater.

POA-DESIGNATED ACCESS: Fishing is permitted on all areas of the pond.

PARKING: Numerous parking spaces surround the pond.



SEASIDE - Pond #250. Sandy Cove Pond

DIRECTIONS: From Seaside Gate, east on Oceanic Drive, then left on Drift Tide Way or Sandy Cove Lane.

POA-DESIGNATED ACCESS: Fishing is permitted on all areas of the pond.

PARKING: Street parking available around the pond. Do not block driveways.



