



# RESIDENTIAL WATER CONDITIONING

## Magnetic Solution to Lime/Scale Problems

### SUPERIOR BENEFITS:

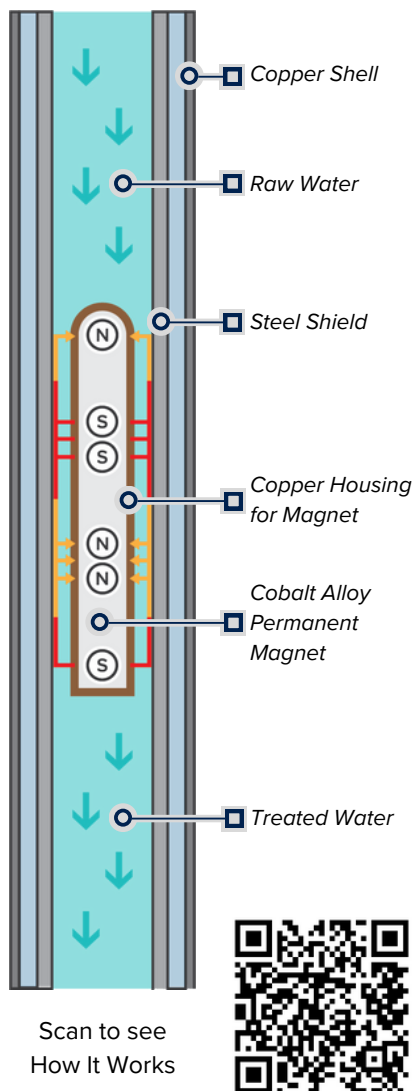
- ✓ Dissolves Existing Scale
- ✓ Prevents New Scale Formations
- ✓ Easily Installs Inline
- ✓ Maintenance Free
- ✓ No Water Loss



Call Us  
(260)456-3596



Visit Our Website  
[www.superiorwaterconditioners.com](http://www.superiorwaterconditioners.com)



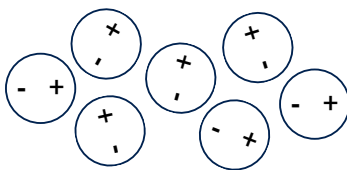
## HOW IT WORKS: THE SUPERIOR WATER CONDITIONER

Naturally occurring calcium and magnesium minerals in water form clusters that turn into calcite (scale) and develop thick layers over time. The restrictive scale layers can reduce water pressure and cause a variety of plumbing issues. The Superior Water Conditioner stops this process from happening.

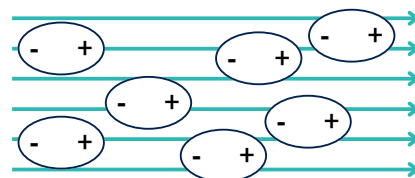
Water flows through a series of alternating polarity permanent magnetic fields. This polarizes the calcium molecules to all be aligned in the same direction, preventing them from combining and forming scale clusters.

Instead of forming problematic scale, the magnetized hard minerals now freely flow through the system as soft aragonite, which is another form of calcium, and is a naturally beneficial mineral to consume.

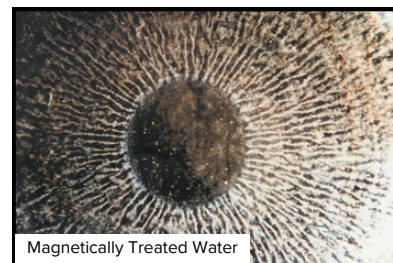
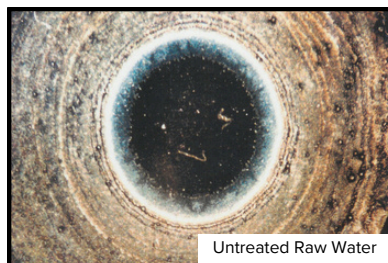
The unique multi-field magnet design also reduces the water's surface tension, which helps soap lather better and will dissolve any existing scale buildup.



Arrangement of non-polar molecules in the absence of a magnetic field



Arrangement of non-polar molecules under the influence of a magnetic field



Photographs of Partially Evaporated Water Magnified to the 40th Power.

## WATER CONDITIONING TECHNOLOGIES

Unlike chemical water treatment and conventional water softeners, Superior Water Conditioners do not add harmful contaminants to water supplies, or discharge hazardous chemicals into our ecosystem. And, unlike all other magnetic water treatment systems, only Superior offers its proprietary multi-field magnetic technology with more than 60 years of proven results to back it up.

	Superior Multi-Field Water Conditioners	Other permanent magnetic devices	Electro-Magnetic Devices	Chemical Water Treatment	Conventional Water Softener
Softens Water	<input type="checkbox"/>	<input type="checkbox"/>	<input type="checkbox"/>	<input type="checkbox"/>	<input checked="" type="checkbox"/>
Consumes No Energy	<input checked="" type="checkbox"/>	<input checked="" type="checkbox"/>	<input type="checkbox"/>	<input type="checkbox"/>	<input type="checkbox"/>
Consumes No Chemicals	<input checked="" type="checkbox"/>	<input checked="" type="checkbox"/>	<input checked="" type="checkbox"/>	<input type="checkbox"/>	<input type="checkbox"/>
Produces No Chemical By-products/non-polluting	<input checked="" type="checkbox"/>	<input checked="" type="checkbox"/>	<input checked="" type="checkbox"/>	<input type="checkbox"/>	<input type="checkbox"/>
Multi-Field Magnetic Technology	<input checked="" type="checkbox"/>	<input type="checkbox"/>	<input type="checkbox"/>	<input type="checkbox"/>	<input type="checkbox"/>
Most Effective Scale and Corrosion Control	<input checked="" type="checkbox"/>	<input type="checkbox"/>	<input type="checkbox"/>	<input type="checkbox"/>	<input type="checkbox"/>

# SUPERIOR PLUMBING PROTECTION

Superior Water Conditioners are a maintenance-free way of controlling hard water problems such as scale and corrosion in your plumbing system. As a result, Superior Water Conditioners help maintain efficiency of appliances such as dishwashers and water heaters.



## PIPES, FAUCETS, AND FIXTURES

Water conditioned with Superior Water Conditioners dissolves existing scale and eliminates future buildup, thus protecting residential plumbing systems from the negative effects of scale.



## DISHWASHERS

Maintain your dishwasher's efficiency and performance with the help of a Superior Water Conditioner by controlling scale buildup on heating elements, reducing water spots on dishes, glasses, and tableware.



## HUMIDIFIERS

Whole House Humidifiers are key to maintaining comfort, but minerals left behind during evaporation can reduce efficiency and require frequent cleaning. Superior Water Conditioners help reduce maintenance associated with Humidifiers and ensure optimum operation.



## ICE MACHINES

Superior Water Conditioners eliminate the buildup of scale and problems with "cloudy cubes" without the use of phosphate filters.



## WATER HEATERS

Water Heaters are prime locations for scale buildup due to heating and cooling cycles. This scale buildup results in increased energy costs and reduction in heater lifespan. A Superior Water Conditioner can help prevent these problems.



Scale buildup in various plumbing pipes (before Superior installed)



Superior unit installed on a tankless water heater



New, Scale Free Heating Element



Severely Scaled Heating Element

## DID YOU KNOW?

A Superior Water Conditioner can be used in place of a traditional salt-based water softener. Certain municipalities have even begun banning or limiting salt-based water softeners to lower desalination costs.



Superior unit installed on a standard water heater



# SIZING AND SELECTION CHART

Typical Application	Model	Connection Sizes	Min. Flow	Max. Flow
Ice Makers	I*	1/4" compression	--	3 GPH
Humidifiers	H*	1/4" compression	--	6 GPH
Garden Hose/ Sprinklers	GH	Std. Garden Hose	0.05 GPM	5 GPM
Tankless and Tank Water Heaters	R	3/4" FNPT	0.1 GPM	6 GPM
Whole House / 2 people or less	RX	1" FNPT	5 GPM	9 GPM
Whole House / 3-4 people	RX Special	1" FNPT	6 GPM	12 GPM
Whole House / 4 or more people	RES	1" FNPT	9 GPM	20 GPM
Whole House (Multi-Unit)	R-150	1-1/2" FNPT	12 GPM	35 GPM
Whole House (Multi-Unit)	R-200	2" FNPT	20 GPM	50 GPM



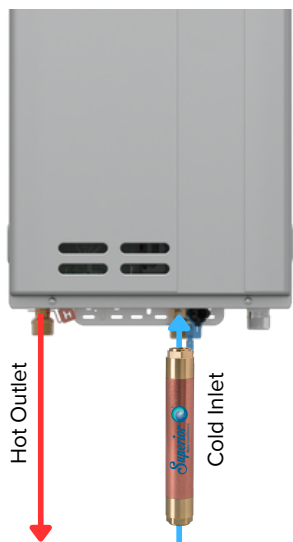
Scan to  
learn more

\*Superior Models "I" and "H" are measured in flow rates of GPH (gallons per hour).

## MOST COMMON INSTALLATIONS

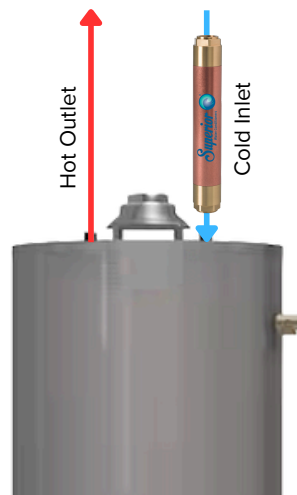
### TANKLESS WATER HEATER

Installed on cold inlet



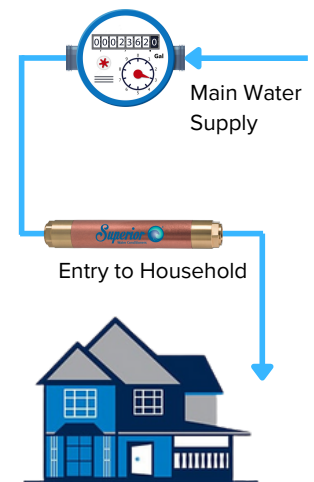
### TANK WATER HEATER

Single pass application



### MAIN LINE - WHOLE HOUSE

Single pass application



Install Superior on Hot Outlet in recirculating applications for tank and tankless water heaters  
Dielectric unions are recommended on all installations to prevent electrolysis



Proudly Made in the USA.



(260) 456-3596  
www.superiorwaterconditioners.com  
1365 N. Clovis Ave. Fresno, CA, 93727

SWC-1004A (Rev. 10/24)