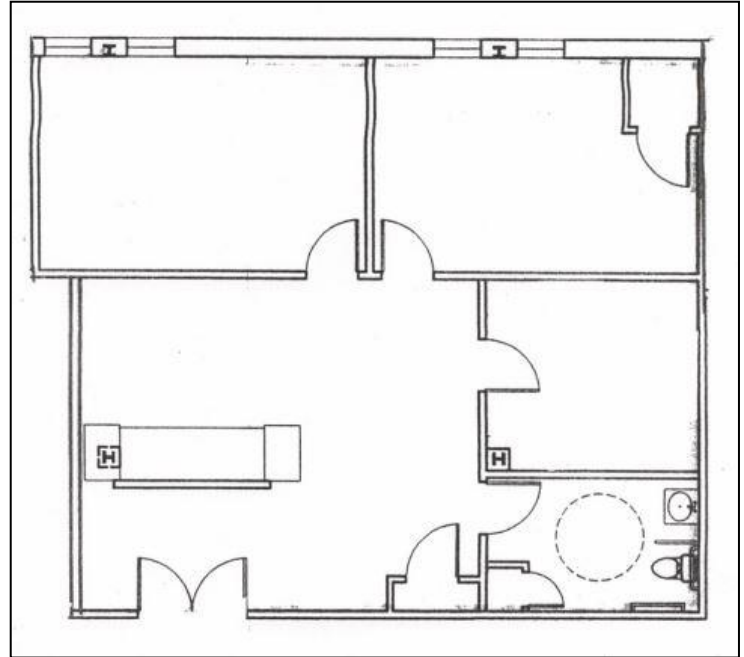




# Office Space for Lease

**1 Trap Falls, Shelton – 1,300sf  
\$17.50/sf Full Gross**



**Terrific Professional Office Suite  
Convenient to Rte 8, Shopping and Restaurants  
Lease for \$17.50/rsf Full Gross  
Located on the 2<sup>nd</sup> Floor with elevator**

Suite 213 – Beautiful 1,300+/-sf professional office suite with attractive reception area to receive clients. 3 private offices and lavatory. Windows in two offices, glass doors. Move-in condition.

**Traffic Count on Bridgeport Ave and Trap Falls Rd is Approx. 25,000/vehicles per day**

**Call Steve for more information @ 203-260-1369**

*The information above has been obtained from sources believed reliable. While we do not doubt its accuracy we have not verified it and make no warranty or representation about it.*



**Steve Hodson/Hodson Realty, Inc.  
6515 Main St. , Trumbull, Ct. 06611  
Ph: 203-268-7743  
Cell: 203-260-1369  
Steve@HodsonRealty.com  
www.HodsonCommercial.com**



*Integrity. Quality. Experience. Service.*