



930sf Office / Retail Storefront 440 Howe Ave, Shelton, CT For Lease: \$1,650/mo + utilities



OFFICE / RETAIL STOREFRONT ON HOWE AVE

This location has excellent access to Route 8 and great visibility on Howe Avenue. Recently remodeled professional office space perfect for lawyer, accountant, financial services, health services, etc. Could possibly be used for retail depending on use. Numerous possibilities!

The unit is directly adjacent to the municipal post office parking lot on Bridge Street. Plus, on-street parking in front of unit on Howe Av. Building also has reserved parking in the rear for tenants and numerous other parking options also available nearby. Located at the heart of the rapidly developing downtown area with numerous new commercial uses and apartments with hundreds of tenants within walking distance. Currently fit up for 2 offices, one conference room and a front reception area which could also be used as an office. Also has private rest room and storage/kitchen area. Some existing furnishings available if desired.

The information above has been obtained from sources believed reliable. While we do not doubt its accuracy we have not verified it and make no guarantee, warranty or representation about it.

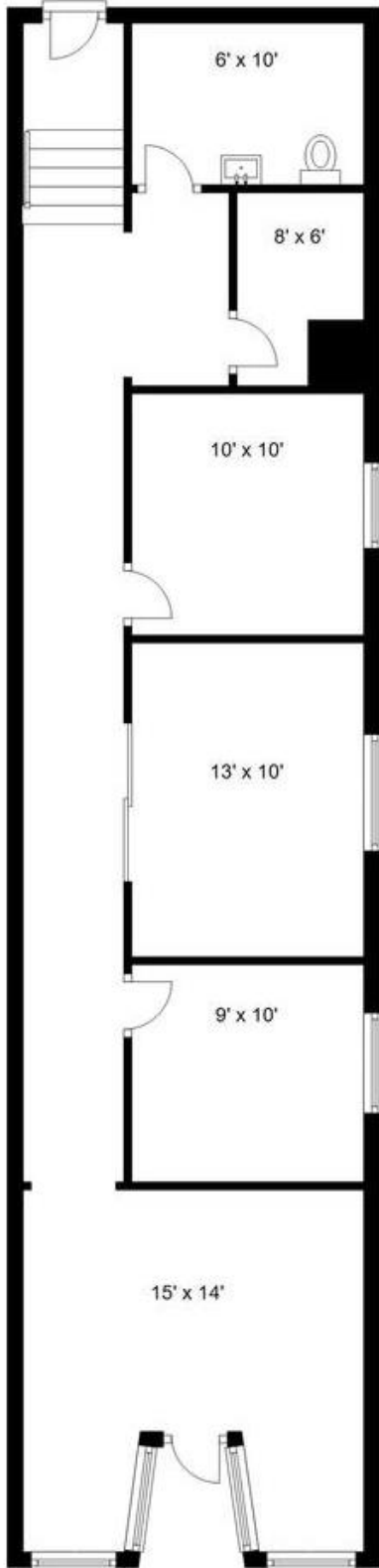


Mark Yash/Hodson Realty, Inc.
6515 Main St. , Trumbull, Ct. 06611
Ph: 203-268-7743
Cell: 203-209-6713
Mark@HodsonRealty.com
www.HodsonCommercial.com



Integrity. Quality. Experience. Service.

Floor Plan



Photos

