

## Professional Pickleball Association Mar. 2025: St. George

### On-Site Paddle Testing

The on-site testing at PPA St. George followed procedures derived from PPL's experience testing paddles at similar professional events and the United Pickleball Association leadership's preferences.

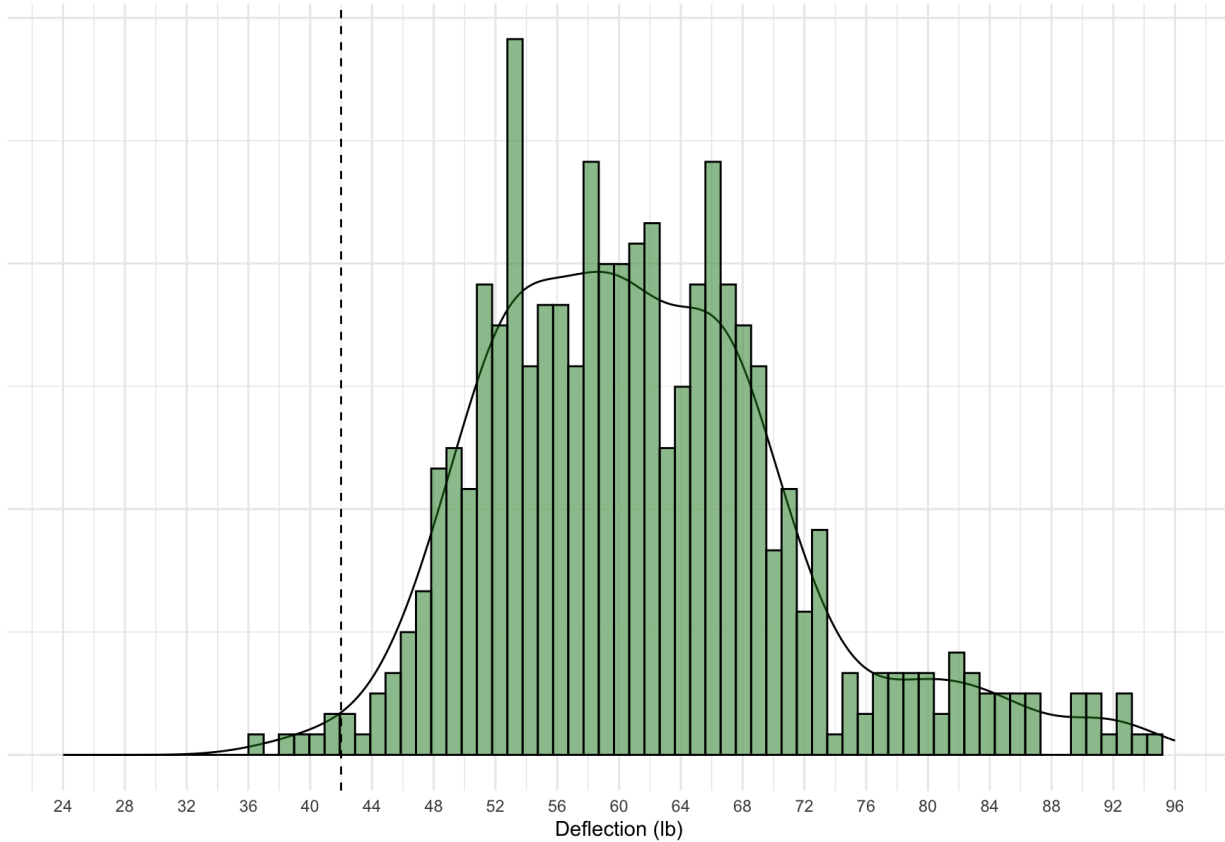
### Testing Summary Analysis

There were a total of 578 paddles (56 models) made up from 20 manufacturers submitted for onsite testing at the PPA St. George event.

Average ADF: 60.43

Total Fails: 9

Fail Rate: 1.6%



\*On this report, average ADF is defined as the total average of all testing locations on the paddle