

## Professional Pickleball Association Feb. 2025: Tucson

### On-Site Paddle Testing

The on-site testing at PPA Tucson event followed procedures derived from PPL's experience testing paddles at similar professional events and the United Pickleball Association leadership's preferences.

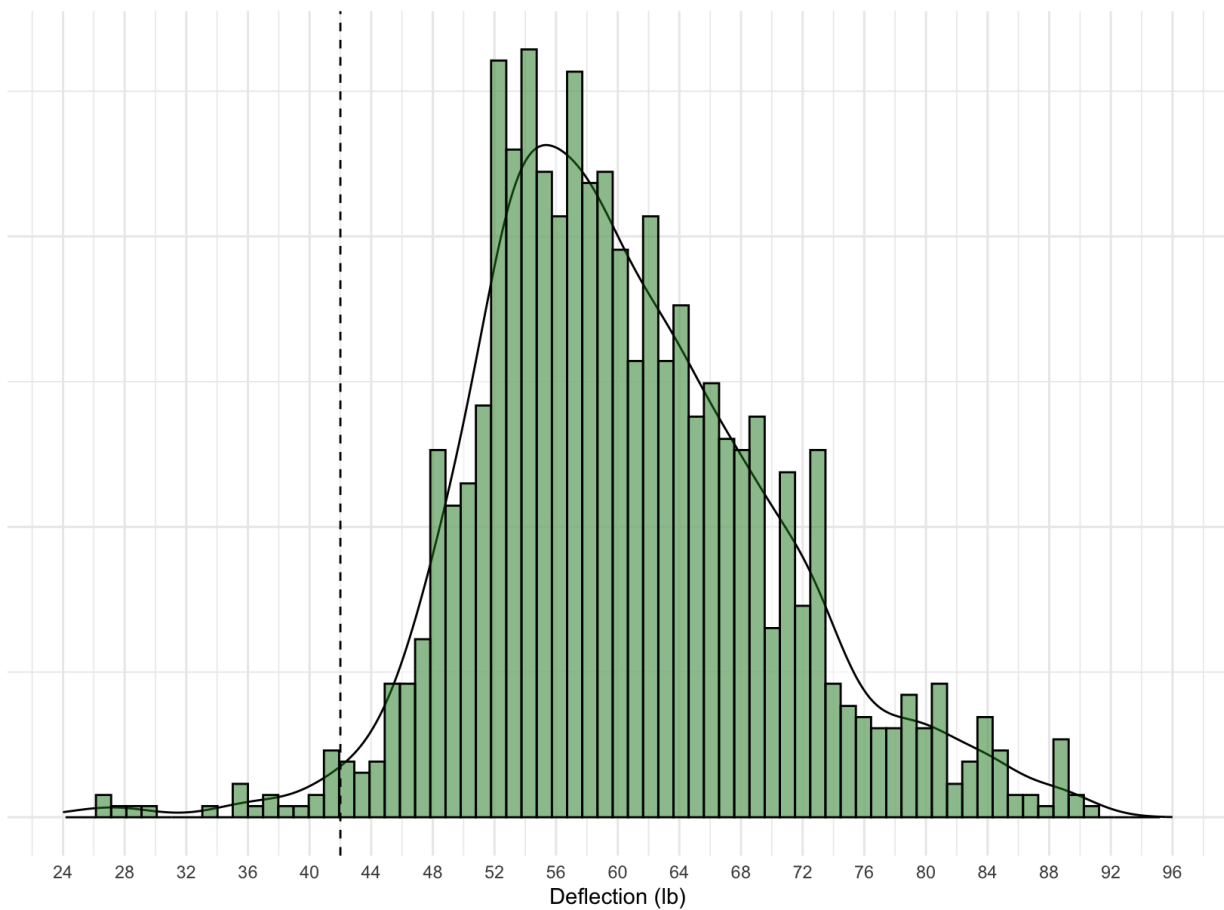
### Testing Summary Analysis

There were a total of 685 paddles (51 models) made up from 21 manufacturers submitted for onsite testing at the PPA Palm Springs event.

Average ADF: 60.2

Total Fails: 37

Fail Rate: 5.4%



\*On this report, average ADF is defined as the total average of all testing locations on the paddle