

Professional Pickleball Association Apr. 2025: Cary

On-Site Paddle Testing

The on-site testing at PPA Cary event followed procedures derived from PPL's experience testing paddles at similar professional events and the United Pickleball Association leadership's preferences.

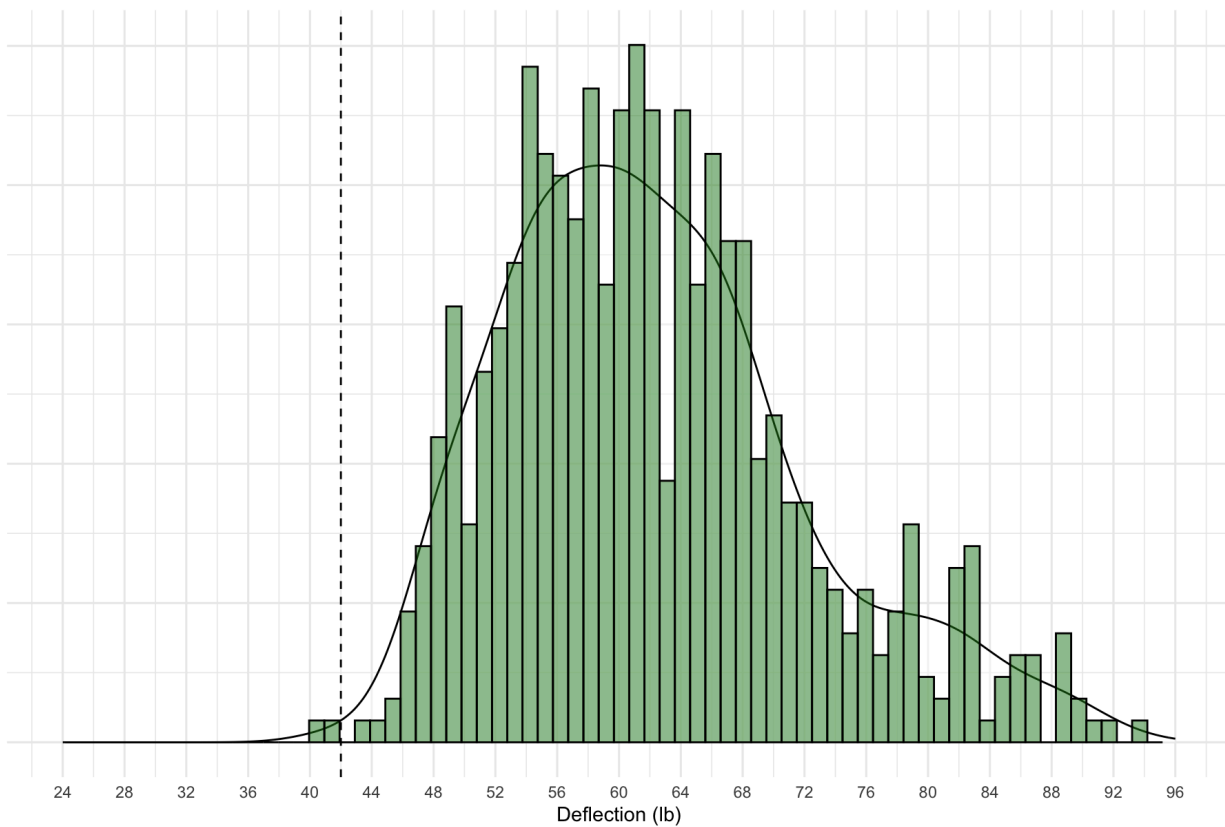
Testing Summary Analysis

There were a total of 674 paddles (59 models) made up from 22 manufacturers submitted for onsite testing at the PPA Cary event.

Average ADF: 62.1

Total Fails: 3

Fail Rate: 0.5%



*On this report, average ADF is defined as the total average of all testing locations on the paddle