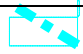






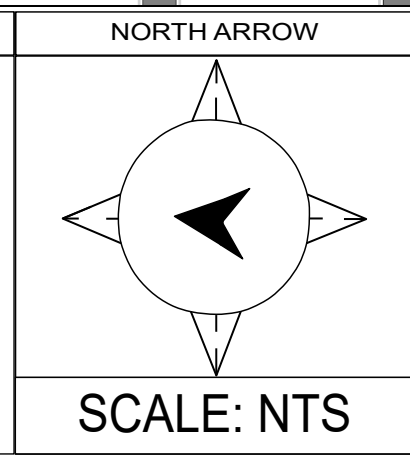
Additional Legend

-  5K RUN ROUTE
-  R1-1 R1-1
-  SC5
-  TYPE II W/ SIGN
-  TYPE III BARRICADE

COMMENTS

STOP SIGNS (R1-1) ARE EXISTING STOP SIGNS

STAMP



WR#

WORK AREA TRAFFIC CONTROL PLAN

DASH FOR DISABILITIES 5K RUN

PUBLIC WORKS AGENCY
CITY OF HESPERIA



GLOBAL CUSTOMER SERVICES



DESIGNED BY:
GLOBAL CUSTOMER SERVICE
DRAWN BY:
FERNANDO RUIZ
DATE:
04/05/2024

11768 MARIPOSA RD HESPERIA, CA 92345
(844) 48-GLOBAL

SHEET 1 OF 1