

**Product:** G2 Commander/Maverick Trail-Sport Reverse Light Kit

**Disclaimer:** Disconnect the battery when installing any electrical components.

**Instructions:**

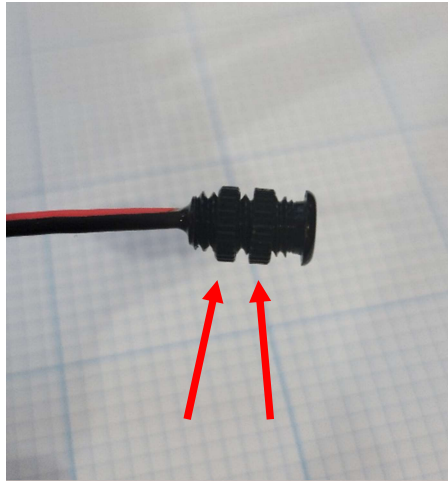
- In the driver side wheel well there will be a rubber boot that has other wires running from inside of the cab through the fire wall. Cut the end zip tie off the rubber boot and feed the end of harness with the ring terminals on it through the rubber boot into the cab.



Thank you for your purchase.

For a list of more products we offer please visit [marqcadeng.com](http://marqcadeng.com) or message us on facebook at marqCAD Engineering if you don't see what you are looking for on the website.

- Remove the lock rings from the LED lights and run them down and off the wires.



- Drill 15/64" hole if the desired locations for the wires. Below is an example of where most customers install theirs. If you are going to mount in a different location please make sure the wires will reach to your dimmer switch mounting location.



- Once drilled feed the led bare wire pins through the hole and then feed the lock rings back onto the wires and tighten them on the LED to hold it in place.

Thank you for your purchase.

For a list of more products we offer please visit [marqcadeng.com](http://marqcadeng.com) or message us on facebook at marqCAD Engineering if you don't see what you are looking for on the website.

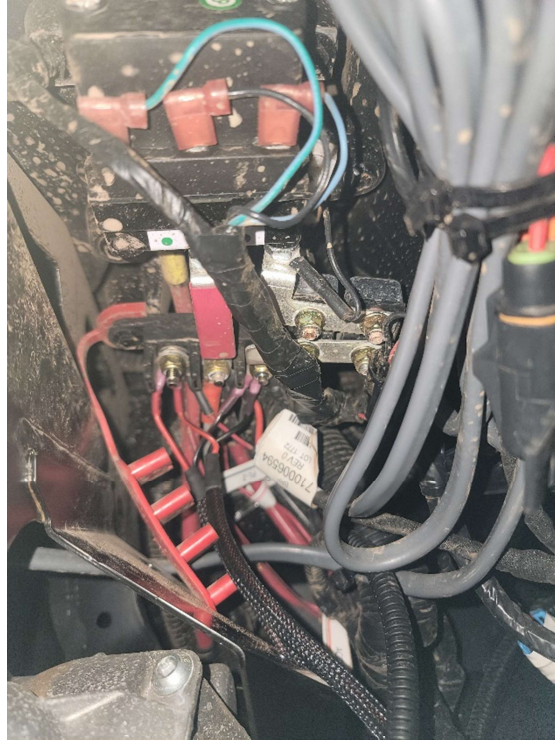
- Once mounted connect the plug ends to the bare wire pins using the supplied vendor instructions. Please keep in mind that the red wire needs to match up with red on the other side of the plug. The same thing for the black wire. If inserted into the plug backwards it will take a special tool to release and remove the pins from the plug. Connect the light plugs to the plugs from the harness.



Thank you for your purchase.

For a list of more products we offer please visit [marqcadeng.com](http://marqcadeng.com) or message us on facebook at marqCAD Engineering if you don't see what you are looking for on the website.

- The power harness will also connect to the power terminal located on the right side of the steering column. The Ground (black wire) should be attached to the right post of the power terminal and the Power (Red Wire) should be attached to the left post of the power terminal; this is key power.



- Once connected test the lights for proper operation and use the supplied zip ties to tie up loose wires.

Thank you for your purchase.

For a list of more products we offer please visit [marqcadeng.com](http://marqcadeng.com) or message us on facebook at marqCAD Engineering if you don't see what you are looking for on the website.