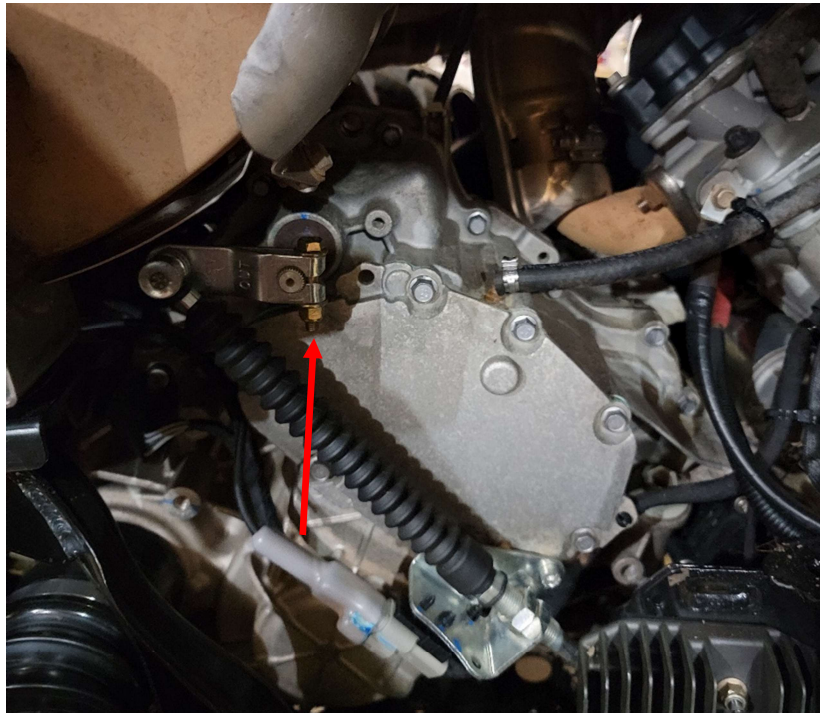


**Product:** Can-Am Commander Reverse Switch

**Disclaimer:** Disconnect the battery when installing any electrical components

**Instructions:**

- Remove the bolt from the shifter linkage on the transmission and replace it with the supplied bolt. The supplied bolt is a little longer than the OEM bolt. Do not remove the linkage itself because if not put on correctly the machine will not shift into the gears properly.

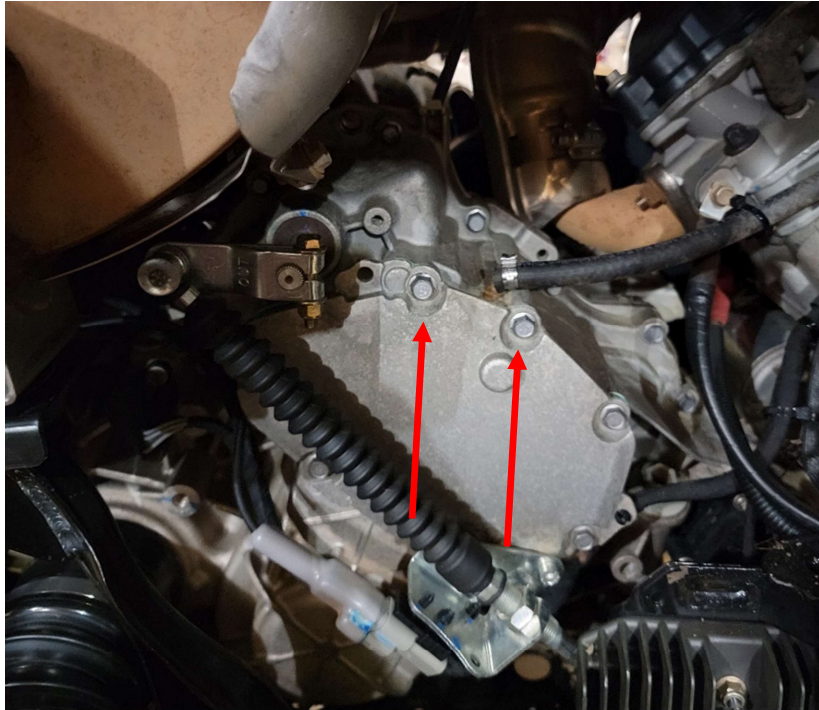


- Slide the switch to the bottom of the bracket to have the best access to the mounting bolt holes.

Thank you for your purchase.

For a list of more products we offer please visit [marqcadeng.com](http://marqcadeng.com) or message us on facebook at marqCAD Engineering if you don't see what you are looking for on the website.

- Remove the top two bolts from the transmission shown in the picture below.



- The two holes in the switch bracket will line up and mount to the holes in the transmission where the bolts were removed. Reuse the bolts that were taken out to attach the bracket to the transmission. These should be tightened down to 90in/lbs.



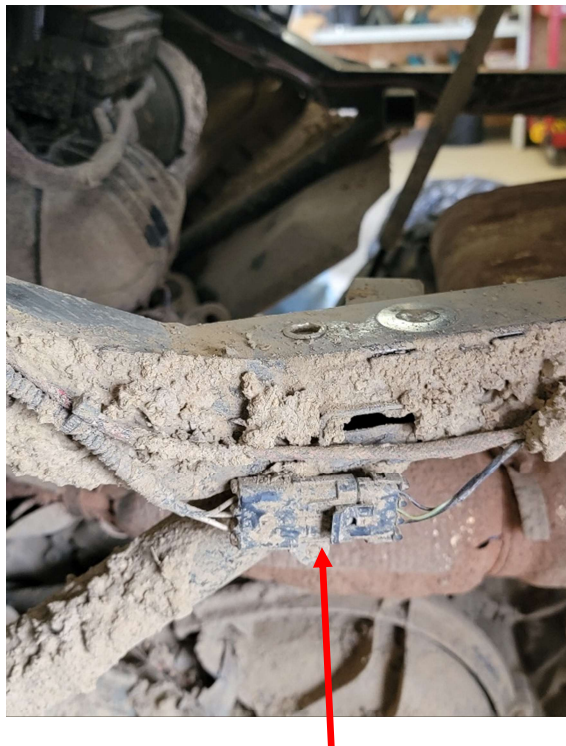
Thank you for your purchase.

For a list of more products we offer please visit [marqcadeng.com](http://marqcadeng.com) or message us on facebook at marqCAD Engineering if you don't see what you are looking for on the website.

- If the bolt seems like it is too long and binding on the switch while shifting into reverse add the supplied washers to the bolt head side of the shifter linkage bolt.



- Put the bed into the dump position and locate the tail light harness plug on the driver side frame.

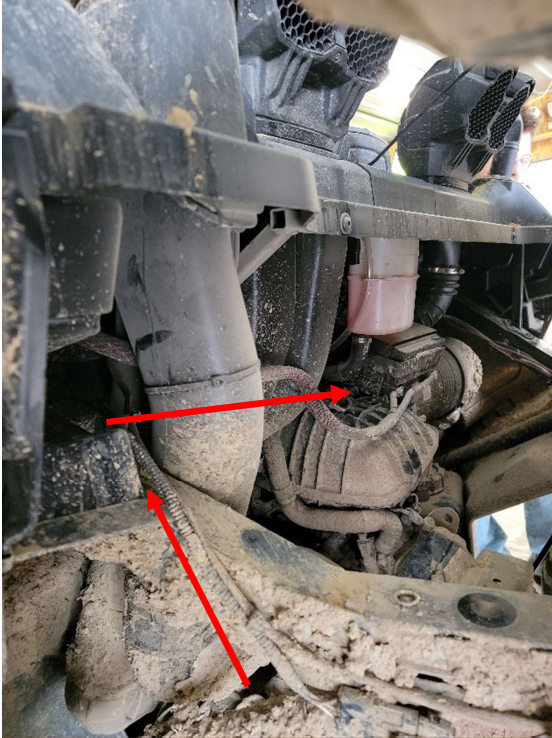


Thank you for your purchase.

For a list of more products we offer please visit [marqcadeng.com](http://marqcadeng.com) or message us on facebook at marqCAD Engineering if you don't see what you are looking for on the website.



- Unplug the connector and connect the connectors from the MCE harness to each side of the OEM connectors.
- Run the wires along the stock wiring and along the back firewall to the passenger side of the vehicle and follow along the transmission vent line down to the switch



- The end of the harness labeled lights should be routed the same but instead of going along the transmission vent tube is should be ran down and through the firewall along the main harness wires.
- Remove the rubber boot by the seatbelts and remove the center console by removing the bolts shown below.
- Run the light harness along the OEM harness up through to under the dash using the supplied zip ties to attach to OEM harness.
- In the driver side front wheel well there will be a rubber boot that has other wires running from inside of the cab through the fire wall. Cut the end zip tie off the rubber boot feed the harness through it.

Thank you for your purchase.

For a list of more products we offer please visit [marqcadeng.com](http://marqcadeng.com) or message us on facebook at marqCAD Engineering if you don't see what you are looking for on the website.



- Feed the open plug ends of the cage harness up through the bottom of the driver side front cage pillar. Use the slots in the side of the pillar to help run the wire up to the top exit hole.



- Run the open plug ends to the backside of the cage corner, and attach the plug end to the pins following the supplied plug end instructions. Be sure that the red wire and black wire will match up correctly to the mating plug.
- Mount the light housings with the supplied screws. Once mounted drill out the center hole and top holes through the housing and the roof. Then center hole is for the KC light mounting screw and the top hole is for the light wiring to run through.

Thank you for your purchase.

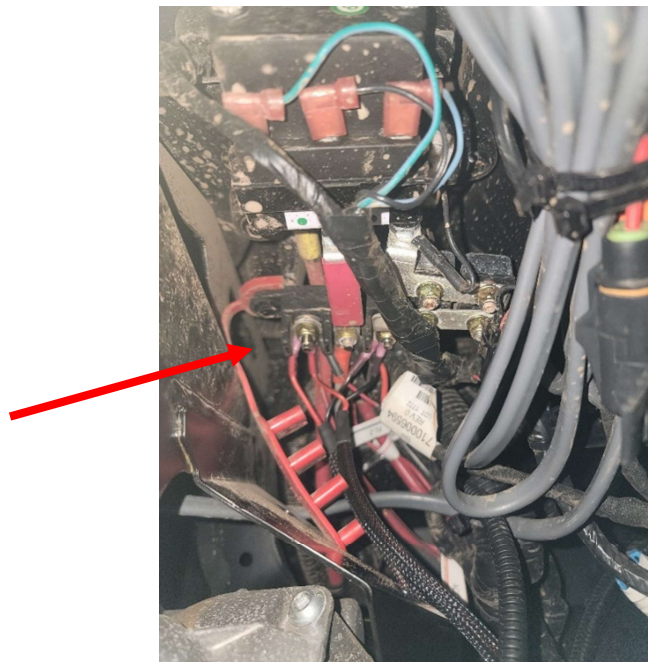
For a list of more products we offer please visit [marqcadeng.com](http://marqcadeng.com) or message us on facebook at marqCAD Engineering if you don't see what you are looking for on the website.



- Run the light harness along the backside of the cage and connect the lights and the plug end from the cage harness.
- Test the lights to insure proper functionality. Once it is verified tie up any loose wires using the supplied zip ties and reinstall any components removed for installation.

#### Rocker Switch Option

- The ACC harness will have a single wire labeled as rocker for the output power from the switch to the lights. The small harness with the ring terminals should be connected from the terminal block to the rocker switch. The power terminal is located on the right side of the steering column. The Ground (black wire) should be attached to the right post of the power terminal and the Power (Red Wire) should be attached to the left post of the power terminal, this is key power.



Thank you for your purchase.

For a list of more products we offer please visit [marqcadeng.com](http://marqcadeng.com) or message us on facebook at marqCAD Engineering if you don't see what you are looking for on the website.