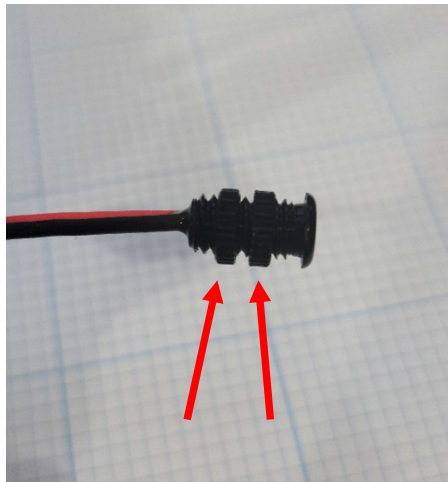


Product: Can-Am Commander Interior Light Kit

Disclaimer: Disconnect the battery when installing any electrical components.

Instructions:

- Remove the lock rings from the LED lights and run them down and off the wires.



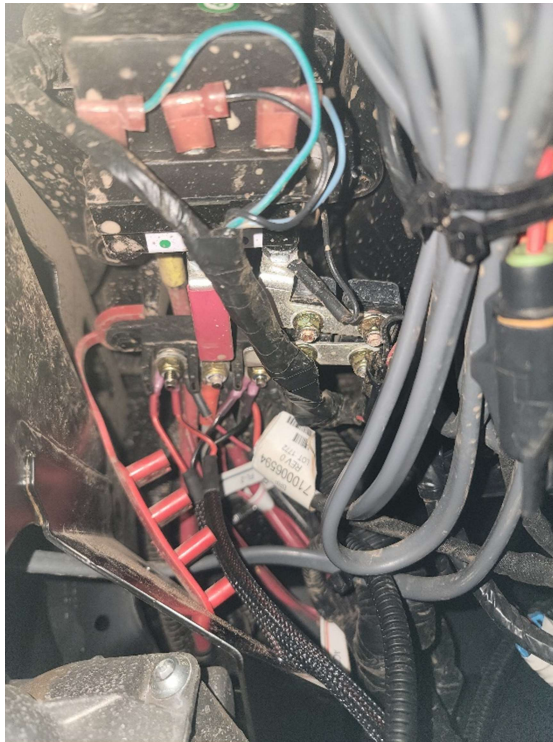
- Drill 15/64" hole if the desired locations for the wires. Below is an example of where most customers install theirs. If you are going to mount in a different location please make sure the wires will reach to your dimmer switch mounting location.



Thank you for your purchase.

For a list of more products we offer please visit marqcadeng.com or message us on facebook at marqCAD Engineering if you don't see what you are looking for on the website.

- Once drilled feed the led bare wire pins though the hole and then feed the lock rings back onto the wires and tighten them on the LED to hold it in place.
- Mount the dimmer switch near the center rocker switches using the supplied instructions that came with the switch.
- Once mounted route the plug ends to the rocker switch plugs and connect the plug ends to the bare wire pins using the supplied vendor instructions. Please keep in mind that the red wire needs to match up with red on the other side of the plug. The same thing for the black wire. If inserted into the plug backwards it will take a special tool to release and remove the pins from the plug.
- The power harness will also connect to the power terminal located on the right side of the steering column. The Ground (black wire) should be attached to the right post of the power terminal and the Power (Red Wire) should be attached to the left post of the power terminal; this is key power.



- Once connected test the lights for proper operation and use the supplied zip ties to tie up loose wires.

Thank you for your purchase.

For a list of more products we offer please visit marqcadeng.com or message us on facebook at marqCAD Engineering if you don't see what you are looking for on the website.