

Product: Can-Am X3 Reverse Lights/Housings and Switch

Disclaimer: When wiring it is suggested to disconnect the battery terminals

Instructions:

Light Installation

- Drill a hole  $\frac{3}{8}$ " to  $\frac{1}{2}$ " in the location shown below, right above the corner in the housing. This will be where the wires will run through to the backside of the tail light housing.



Thank you for your purchase.

For a list of more products we offer please visit [marqcadeng.com](http://marqcadeng.com) or message us on facebook at marqCAD Engineering if you don't see what you are looking for on the website.

- With light pressure hold the housing in place and secure using the supplied screws. Each housing will have two screws. Do not over tighten the screws as you may strip out the OEM Tail light housing or crack the reverse light housing.

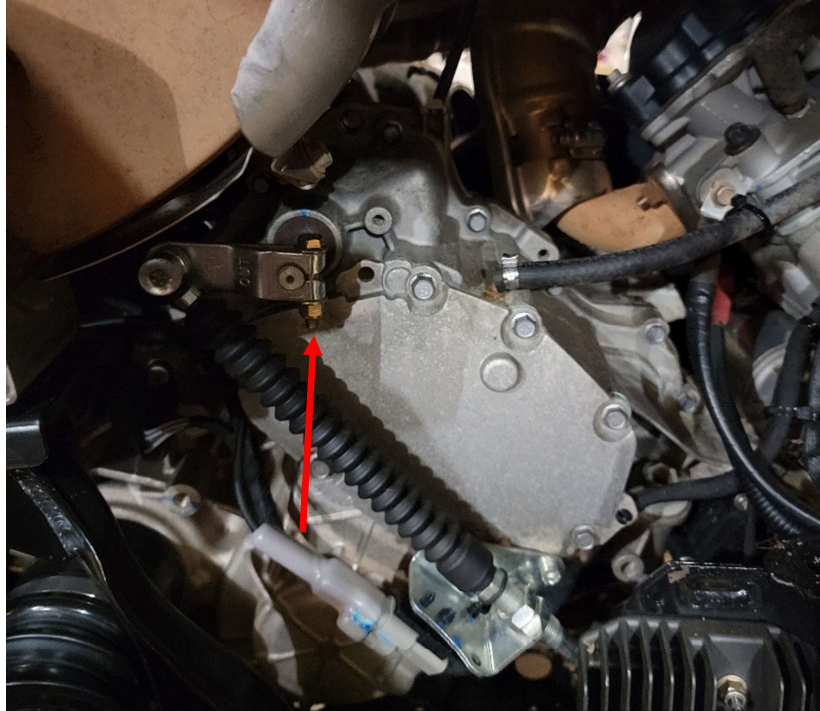


Thank you for your purchase.

For a list of more products we offer please visit [marqcadeng.com](http://marqcadeng.com) or message us on facebook at marqCAD Engineering if you don't see what you are looking for on the website.

## Switch Installation

- Remove the bolt from the shifter linkage on the transmission and replace it with the supplied bolt. The supplied bolt is a little longer than the OEM bolt. Do not remove the linkage itself because if not put on correctly the machine will not shift into the gears properly.

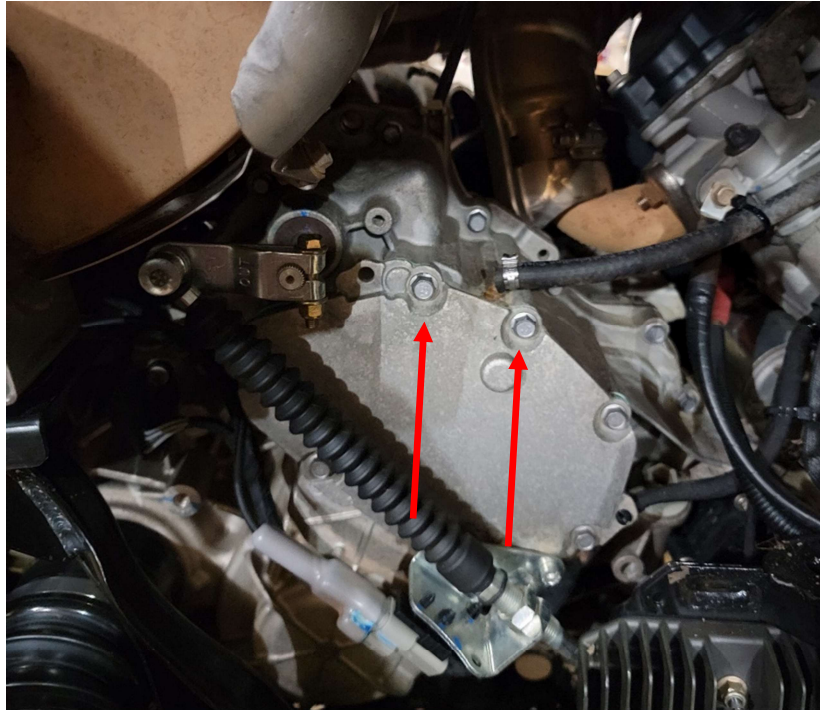


- Slide the switch to the bottom of the bracket to have the best access to the mounting bolt holes.

Thank you for your purchase.

For a list of more products we offer please visit [marqcadeng.com](http://marqcadeng.com) or message us on facebook at marqCAD Engineering if you don't see what you are looking for on the website.

- Remove the top two bolts from the transmission shown in the picture below.



- The two holes in the switch bracket will line up and mount to the holes in the transmission where the bolts were removed. Reuse the bolts that were taken out to attach the bracket to the transmission. These should be tightened down to 90in/lbs.

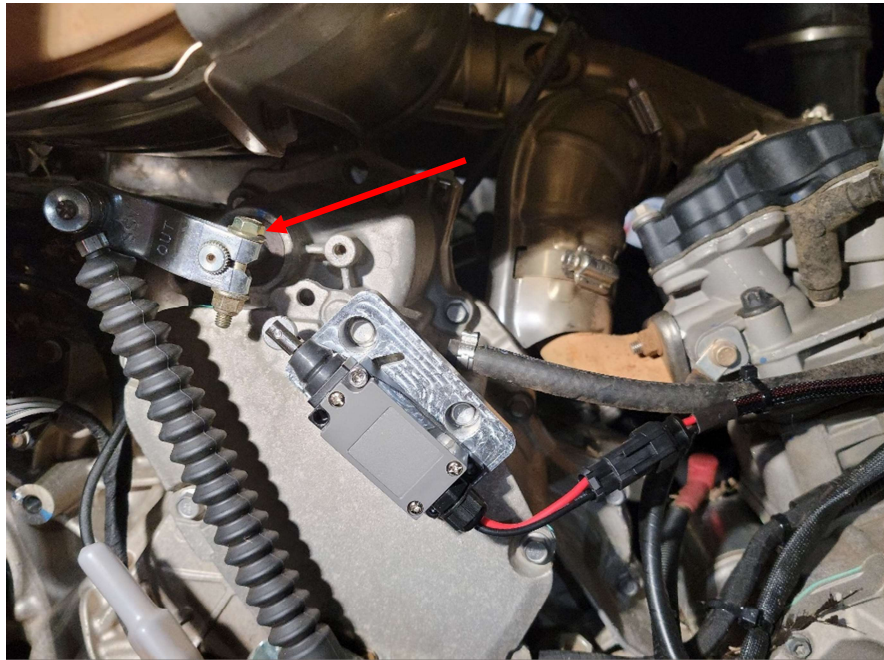


Thank you for your purchase.

For a list of more products we offer please visit [marqcadeng.com](http://marqcadeng.com) or message us on facebook at marqCAD Engineering if you don't see what you are looking for on the website.

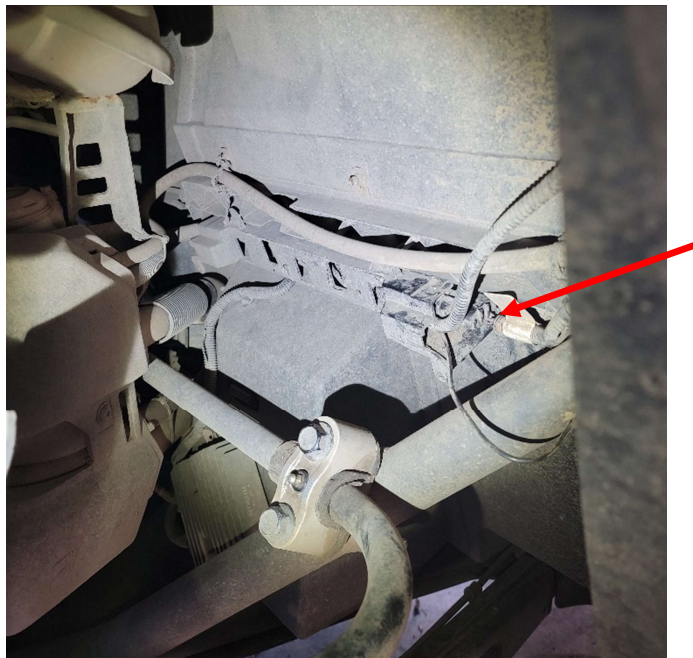


- If the bolt seems like it is too long and binding on the switch while shifting into reverse add the supplied washers to the bolt head side of the shifter linkage bolt.



#### Wiring Installation

- Locate the tail light plug on the passenger side rear firewall and separate the two plugs. Picture below.



Thank you for your purchase.

For a list of more products we offer please visit [marqcadeng.com](http://marqcadeng.com) or message us on facebook at marqCAD Engineering if you don't see what you are looking for on the website.

- Plug the ends of the OEM style plug into each end of the OEM tail light plugs.
- Run the end labeled trans switch down along the wiring and vent tube to the switch on the transmission that was installed in previous steps.
- Plug the end of the light harness (has driver and passenger labels on it) and run the wires along the OEM wires that go to each tail light. Once ran plug the bullet connectors into the reverse lights.
- Test the function of system and once everything is working tie up any loose wires with the supplied zip ties and re-attach any panels that were removed for the installation.

Thank you for your purchase.

For a list of more products we offer please visit [marqcadeng.com](http://marqcadeng.com) or message us on facebook at marqCAD Engineering if you don't see what you are looking for on the website.