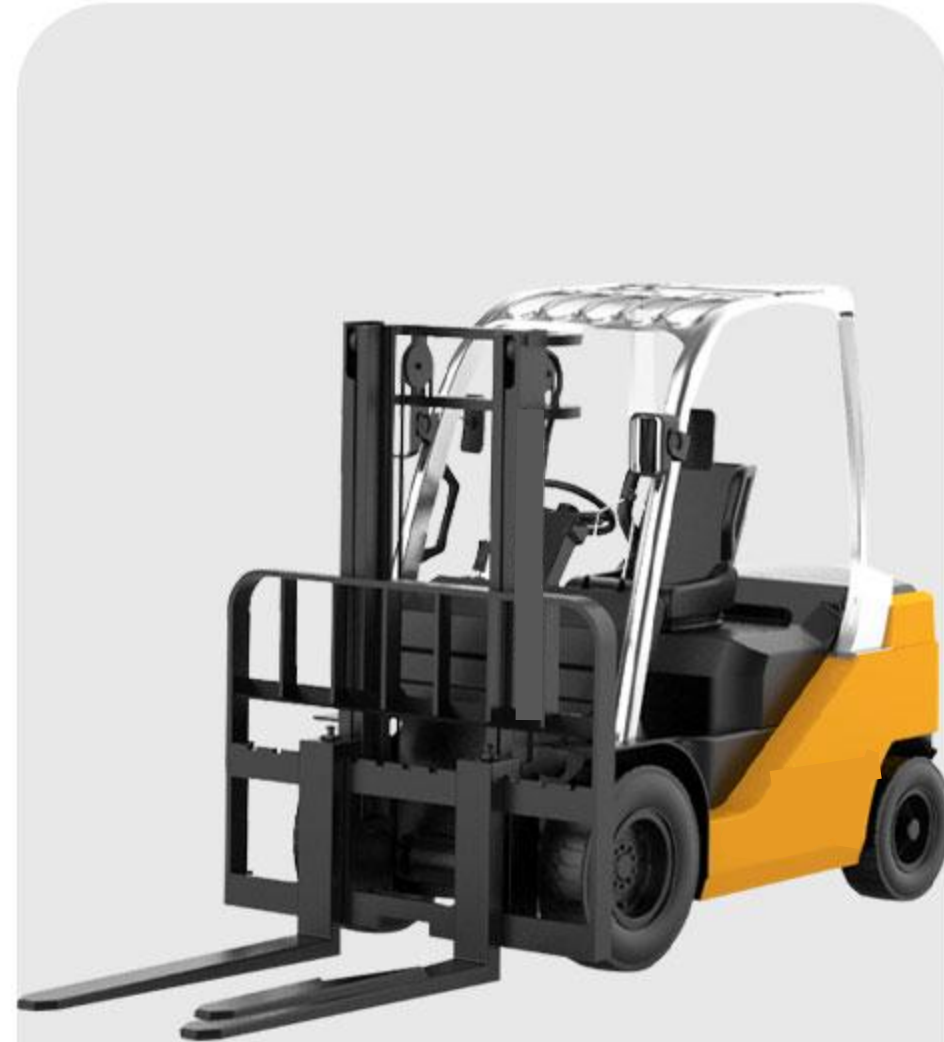




ELECTRIC FORKLIFT



HOT DEALS



CPD-30
ELECTRIC FORKLIFT



CPD-20
ELECTRIC FORKLIFT



CPD-10
THREE POINT FORKLIFT



CPB-30
ELECTRIC FORKLIFT



CBY-30
MANUAL PALLET TRUCK



CDD-15
WALKING STACKER



CDD-25
STANDING STACKER



CPY-15
ELECTRIC SCAFFOLDING

CPD-30 ELECTRIC FORKLIFT



Product parameters

Maximum lifting weight	3000kg
Full length	3870mm
Full width	1200mm
Total vehicle weight	4200kg
Lifting height	3000mm
Voltage	60V
Controller	Fuzhou Xinlianda
Continuous working hours	About 6 hours
Angle of climb	12 degrees

Product characteristics

- The tractor can work in narrow passage as compact appearance and small turning radius.
- Light weight, convenient energy saving, flexible, reliable and safe control mechanism.
- Usina battery as power source, pure power, no pollution, to meet the national environmental protection requirements.
- Fully open hood reasonable position of battery , motor, controller.etc. Convenient for maintenance.



LED searchlight

You can see clearly even when working at night



Adjustable seats

Seat suspension design
Adjustable back and forth



Thickened forged

Integrated forged forks are
more sturdy and durable



Solid rubber tire

Explosion proof tires are
safer



PRODUCT PARAMETERS

Vehicle parameter		
Parameters	Maximum lifting weight	3000kg
	long	2650mm without fork
	long	3870mm containing fork
	wide	1200mm
	high	2150m
	Total vehicle weight	4200kg
	Lifting height	3000mm
	Body material	Thickened one-piece stamped body
	Walking motor	7.5kw brushless AC motor
	Voltage	60v
	Controller	Fuzhou Xinlianda
	battery	10 Chaowei dry batteries (60V/170ah)
	Lights and Signals	Floodlights, left and right turnsignals, brake lights, runninglightsMeters, electric horns, etc
Chassis system	Drive axle	Fully suspended cast steel one-piece 310 bridge
	Tires	Front wheels 650-10(Class A high wear solid tires), rearwheels 500-8(Class A highwear solid tires)
	The steering bridge	Special rear axle for heavy-duty steel plate forklifts
	Braking mode	Handbrake brake, oil brake
	Lift the cylinder	High precision machining of wear-resistant sleeve with unidirectional double oil cylinder
	Fork length	1220m - body forged fork
	Hvdraulic lift motor	5kw brushless AC motor
	Gantry frame material	150mm special steel doorframe
	Steering mode	Hydraulic power steering
	Turning radius	2000mm
	Charging time	6-8 hours
	Continuous working hours	About 6 hours
	Angle of climb	12 degrees

Color body size and height, height and other configurations can be customized according to customer needs.

CPD-10 ELECTRIC FORKLIFT



Product parameters

Maximum lifting weight	1000kg
Full length	3070mm
Full width	1200mm
Total vehicle weight	1700kg
Lifting height	3000mm
Voltage	60V
Controller	Fuzhou Xinlianda
Continuous working hours	about 4 hours
Angle of climb	12 degrees

Product characteristics

- The tractor can work in narrow passage as compact appearance and small turning radius.
- Light weight, convenient energy saving, flexible, reliable and safe control mechanism.
- Usina battery as power source, pure power, no pollution, to meet the national environmental protection requirements.
- Fully open hood reasonable position of battery , motor, controller.etc. Convenient for maintenance.



LED searchlight

You can see clearly even when working at night



Adjustable seats

Seat suspension design
Adjustable back and forth



Thickened forged

Integrated forged forks are
more sturdy and durable



Solid rubber tire

Explosion proof tires are
safer



PRODUCT PARAMETERS

Vehicle parameter		
Parameters	Maximum lifting weight	1000kg
	long	2000mm without fork
	long	3070mm containing fork
	wide	1200mm
	high	2150mm
	Total vehicle weight	1700kg
	Lifting height	3000mm
	Body material	Thickened one-piece stamped body
	Walking motor	2.5kw brushless AC motor
	Voltage	60v
	Controller	Fuzhou Xinlianda
	battery	5 Chaowei dry batteries (60V/70ah)
	Lights and Signals	Floodlights, left and right turn signals, brake lights, running lights, meters, electric horns, etc
Chassis system	Drive axle	Fully suspended cast steel one-piece 220 bridge
	Tires	Front wheels 500-80(Class A high wear solid tires), rear wheels 400-8(Class A high wear solid tires)
	The steering bridge	Special rear axle for heavy-duty steel plate forklifts
	Braking mode	Handbrake brake, oil brake
	Lift the cylinder	High precision machining air wear casing one-way double cylinder
	Fork length	1070mm - body forged fork
	Hydraulic lift motor	1.5kw brushless AC motor
	Gantry frame material	100mm C-shaped steel gantry
	Steering mode	Hydraulic power steering
	Turning radius	2000mm
	Charging time	6-8 hours
	Continuous working hours	About 4 hours
	Angle of climb	12 degrees

Color body size and height, height and other configurations can be customized according to customer needs.

CPD-20 ELECTRIC FORKLIFT



Product parameters

Maximum lifting weight	2000kg
Full length	3620mm
Full width	1200mm
Total vehicle weight	2700kg
Lifting height	3000mm
Voltage	60V
Controller	Fuzhou Xinlianda
Continuous working hours	6-8 hours
Angle of climb	12 degrees

Product characteristics

- The tractor can work in narrow passage as compact appearance and small turning radius.
- Light weight, convenient energy saving, flexible, reliable and safe control mechanism.
- Usina battery as power source, pure power, no pollution, to meet the national environmental protection requirements.
- Fully open hood reasonable position of battery , motor, controller.etc. Convenient for maintenance.



LED searchlight

You can see clearly even when working at night



Adjustable seats

Seat suspension design
Adjustable back and forth



Thickened forged

Integrated forged forks are more sturdy and durable



Solid rubber tire

Explosion proof tires are safer



PRODUCT PARAMETERS

Vehicle parameter		
Parameters	Maximum lifting weight	2000kg
	long	2400mm without fork
	long	3620mm containing fork
	wide	1200mm
	high	2150mm
	Total vehicle weight	2700kg
	Lifting height	3000mm
	Body material	Thickened one-piece stamped body
	Walking motor	4KW brushless AC motor
	Voltage	60v
	Controller	Fuzhou Xinlianda
	battery	10 Chaowei dry batteries (60V/140ah)
	Lights and Signals	Floodlights, left and right turn signals, brake lights, running lights, meters, electric horns, etc
Chassis system	Drive axle	Fully suspended cast steel one-piece 220 bridge
	Tires	Front wheels 650-10(Class A high wear solid tires), rear wheels 500-8(Class A high wear solid tires)
	The steering bridge	Special rear axle for heavy-duty steel plate forklifts
	Braking mode	Handbrake brake, oil brake
	Lift the cylinder	High precision machining air wear casing one-way double cylinder
	Fork length	1220mm - body forged fork
	Hydraulic lift motor	3kw brushless AC motor
	Gantry frame material	120mm special steel door frame
	Steering mode	Hydraulic power steering
	Turning radius	2000mm
	Charging time	6-8 hours
	Continuous working hours	About 6 hours
	Angle of climb	12 degrees

Color body size and height, height and other configurations can be customized according to customer needs.

CPD-40 ELECTRIC FORKLIFT



Product parameters

Maximum lifting weight	4000kg
Full length	4020mm
Full width	1250mm
Total vehicle weight	4800kg
Lifting height	3000mm
Voltage	60V
Controller	Fuzhou Xinlianda
Continuous working hours	about 4 hours
Angle of climb	12 degrees

Product characteristics

- The tractor can work in narrow passage as compact appearance and small turning radius.
- Light weight, convenient energy saving, flexible, reliable and safe control mechanism.
- Usina battery as power source, pure power, no pollution, to meet the national environmental protection requirements.
- Fully open hood reasonable position of battery , motor, controller.etc. Convenient for maintenance.



LED searchlight

You can see clearly even when working at night



Adjustable seats

Seat suspension design
Adjustable back and forth



Thickened forged

Integrated forged forks are
more sturdy and durable



Solid rubber tire

Explosion proof tires are
safer



PRODUCT PARAMETERS

Vehicle parameter		
Parameters	Maximum lifting weight	4000kg
	long	2800mm without fork
	long	4020mm containing fork
	wide	1250mm
	high	2250m
	Total vehicle weight	4800kg
	Lifting height	3000mm
	Body material	Thickened one-piece stamped body
	Walking motor	13.5kw brushless AC motor
	Voltage	60v
	Controller	Fuzhou Xinlianda
	battery	12Forklift specific dry batteries (60V/140ah)
	Lights and Signals	Floodlights, left and right turnsignals, brake lights, runninglightsMeters, electric horns, etc
Chassis system	Drive axle	Integrated heavy-duty low-speed drive axle
	Tires	Front wheel 28 * 9-15 (high wear-resistant solid tire) 650-10 (high wear-resistant solid tire)
	The steering bridge	Special rear axle for heavy-duty forklifts
	Braking mode	Handbrake brake, oil brake
	Lift the cylinder	Strengthening the sealing of dual oil cylinders
	Fork length	1220m - body forged fork
	Hvdraulic lift motor	15kwbrushless AC motor
	Gantry frame material	Thickened and widened 1600mm
	Steering mode	Hydraulic power steering
	Turning radius	2000mm
	Charging time	6hours
	Continuous working hours	6-8 hours
	Angle of climb	25 degrees

Color body size and height, height and other configurations can be customized according to customer needs.

CPD-15 ELECTRIC FORKLIFT



Product parameters

Maximum lifting weight	1500kg
Full length	3220mm
Full width	1200mm
Total vehicle weight	2100kg
Lifting height	3000mm
Voltage	60V
Controller	Fuzhou Xinlianda
Continuous working hours	about 4 hours
Angle of climb	12 degrees

Product characteristics

- The tractor can work in narrow passage as compact appearance and small turning radius.
- Light weight, convenient energy saving, flexible, reliable and safe control mechanism.
- Usina battery as power source, pure power, no pollution, to meet the national environmental protection requirements.
- Fully open hood reasonable position of battery , motor, controller.etc. Convenient for maintenance.



LED searchlight

You can see clearly even when working at night



Adjustable seats

Seat suspension design
Adjustable back and forth



Thickened forged

Integrated forged forks are more sturdy and durable



Solid rubber tire

Explosion proof tires are safer



PRODUCT PARAMETERS

Vehicle parameter		
Parameters	Maximum lifting weight	1500kg
	long	2150mm without fork
	long	3220mm containing fork
	wide	1200mm
	high	2150mm
	Total vehicle weight	2100kg
	Lifting height	3000mm
	Body material	Thickened one-piece stamped body
	Walking motor	3KW brushless AC motor
	Voltage	60v
	Controller	Fuzhou Xinlianda
	battery	5 Chaowei dry batteries (60V/70ah)
	Lights and Signals	Floodlights, left and right turn signals, brake lights, running lights, meters, electric horns, etc
Chassis system	Drive axle	Fully suspended cast steel one-piece 220 bridge
	Tires	Front wheels 650-10(Class A high wear solid tires), rear wheels 500-8(Class A high wear solid tires)
	The steering bridge	Special rear axle for heavy-duty steel plate forklifts
	Braking mode	Handbrake brake, oil brake
	Lift the cylinder	High precision machining air wear casing one-way double cylinder
	Fork length	1070mm - body forged fork
	Hydraulic lift motor	2.2kw brushless AC motor
	Gantry frame material	120mm special steel door frame
	Steering mode	Hydraulic power steering
	Turning radius	2000mm
	Charging time	6-8 hours
	Continuous working hours	About 4 hours
	Angle of climb	12 degrees

Color body size and height, height and other configurations can be customized according to customer needs.

CPD-10 THREE POINT FORKLIFT



Product parameters

Maximum lifting weight	1000kg
Full length	1700mm
Full width	900mm
Total vehicle weight	1300kg
Lifting height	2000mm
Voltage	48V
Controller	Fuzhou Xinlianda
Continuous working hours	about 4 hours
Angle of climb	12 degrees

Product characteristics

- The tractor can work in narrow passage as compact appearance and small turning radius.
- Light weight, convenient energy saving, flexible, reliable and safe control mechanism.
- Usina battery as power source, pure power, no pollution, to meet the national environmental protection requirements.
- Fully open hood reasonable position of battery , motor, controller.etc. Convenient for maintenance.



LED searchlight

You can see clearly even when working at night



Adjustable seats

Seat suspension design
Adjustable back and forth



Thickened forged

Integrated forged forks are more sturdy and durable



Solid rubber tire

Explosion proof tires are safer



PRODUCT PARAMETERS

Vehicle parameter		
Parameters	Maximum lifting weight	1000kg
	long	1700mm without fork
	wide	900mm
	high	1650m
	Total vehicle weight	1300kg
	Lifting height	2000mm
	Body material	Thickened one-piece stamped body
	Walking motor	2.2KW brushless AC motor
	Voltage	48v
	Controller	Fuzhou Xinlianda
	battery	(48V/52A)
Chassis system	Tires	Front wheels 400-10(ClassA high wear solid tires), rearwheels300/100(Class A highwear solid tires)
	The steering bridge	Special rear axle for heavy-duty steel plate forklifts
	Braking mode	Handbrake brake, oil brake
	Lift the cylinder	High precision machining airwear casing one-way doublecylinder
	Fork length	0.8m to 1.6m can be customized
	Gantry frame material	special steel doorframe
	Steering mode	Mechanical assisted operation
	Charging time	6-8 hours
	Continuous working hours	About 4 hours
	Angle of climb	12 degrees

Color body size and height, height and other configurations can be customized according to customer needs.