



CERVANTES 1

VEGETATION MANAGEMENT PLAN

Executive Summary

Management Plan Type	Vegetation Management Plan
Proposal Name	Cervantes 1 Conventional Oil Exploration Well
Proponent Name	RCMA
Ministerial Statement Number	1178
Purpose of Management Plan	Avoid impacts to flora and vegetation from the implementation of the proposal and from changes to fire regime, dieback and weeds in accordance with implementation conditions 3, 8 and 9 of MS 1178.
Key Environmental Outcomes	<ul style="list-style-type: none"> • Disturb no more than 5.3 ha of native vegetation • Disturb no more than 0.99 ha of Priority Ecological Community 'Coastal sands dominated by <i>Acacia rostellifera</i>, <i>Eucalyptus oraria</i> and <i>Eucalyptus obtusiflora</i>' (PEC) • No fire originating from Cervantes 1 activities at any time • No introduction of dieback disease to the Cervantes 1 Development Envelope at any time • Foliage cover of weeds in rehabilitated areas is not greater than adjacent undisturbed remnant vegetation ^(Note 1) after 3 years.
Condition Clauses	Table 1
Proposed Construction Date	February 2022 (Management Plan required prior to Construction)

Note 1-Tracks are affected by the weed load on the opposite side of the track. The "edge effect" in comparison with adjacent track edge will be considered for the application of this outcome

Revision Control

v3	24/01/2022	Vegetation Management Plan revised on EPA and DBCA request for amendments	ASW	-	KA
v2	18/06/2021	Revised VMP based on Ministerial Statement conditions	ASW	-	KA
v1	03/02/2021	Vegetation Condition Table corrected as per DMIRS EP query	ASW	-	-
v0	12/11/2020	Approved VMP	ASW	-	-
vA	30/04/2020	Draft VMP provided to DBCA	ASW	MJ	KA
Rev	Date	Description	By	Checked	Appr.
Document Number RCMA-02-EM-PLN-004					

Distribution

Name	Position	Company
Murray Baker	Senior Environmental Officer	DBCA
Aidan Walsh	Environmental Officer	EPA Services
Ken Aitken	CEO	Metgasco
Chris Newport	Director Oil & Gas	RCMA Australia
Danny Burns	Executive - Exploration	Vintage
	Operations Manager	RCMA Australia

Table of Contents

Executive Summary	2
Revision Control	3
Distribution	4
Table of Contents	5
List of Figures	vi
List of Tables	vi
List of Appendices	vi
Terms & Abbreviations.....	7
Related Documents	7
1. Introduction	8
2. Vegetation Management Objective	8
3. Responsibility and Accountability	8
3.1 Responsibilities.....	8
3.2 Training	8
4. Baseline Vegetation Studies	12
4.1 Desktop	12
4.1.1 Regional Biogeography	12
4.1.2 Regional Vegetation	12
4.1.3 Conservation Significant Vegetation	13
4.1.4 Priority Flora	13
4.1.5 Vegetation Communities	14
4.2 Field Survey	15
4.2.1 Significant Flora	15
4.2.2 Vegetation Types	15
4.2.3 Vegetation Condition.....	16
5. Rationale and Approach	19
6. Avoidance and Mitigation	21
6.1 Land Clearing	21
6.2 Hygiene Management	23
6.3 Fire Management	24
6.4 Other Commitments	24
7. Monitoring	25
7.1 Inspections	25

7.2	<i>Compliance Auditing</i>	26
7.3	<i>Completion Criteria Monitoring</i>	26
8.	Rehabilitation Management	27
9.	Thresholds and Triggers	28
10.	Stakeholder Consultation	29
11.	Reporting	29
11.1	<i>Non-Compliance Reporting</i>	29
11.2	<i>Clearing Recording</i>	29
11.3	<i>Annual Environmental Report</i>	29
11.4	<i>Compliance Assessment Report</i>	29
12.	Adaptive Management and Management Plan Review	30
13.	References	32

List of Figures

Figure 1: Vegetation Type W1 Mapped Widely as part of Denison 3D Project	17
--	----

List of Tables

Table 1: Ministerial Statement Conditions	9
Table 2: Baseline Field Surveys – Flora and Vegetation	12
Table 3: Vegetation System Associations within Proposal Area	12
Table 4: Significant Vegetation Returned from DBCA Database Searches	13
Table 5: Significant Flora Taxa Known from Within the Desktop Study Area	13
Table 6: Proposed Project Disturbance – Vegetation Communities	14
Table 7: Proposed Development Envelope Vegetation Communities	15
Table 8: Vegetation Condition Ratings for each VT in the Project Area	18
Table 9: Vegetation Systems Disturbance	19
Table 10: Proposed Vegetation Communities Disturbance	19
Table 11: Routine Site Inspections	25
Table 12: Environmental Auditing	26
Table 13: Weed, Dieback and Rehabilitation Monitoring	26
Table 14: Cervantes Vegetation Management Plan Thresholds and Triggers	28
Table 15: Environmental Incident Reporting	31

List of Appendices

Appendix A	Vegetation Community Mapping
Appendix B	Stakeholder Consultation Register
Appendix C	Clearing Vegetation Record Form [RCMA-02-EM-FM-002]

Terms & Abbreviations

AER	Annual Environmental Report
AIEA	Annual Internal Environmental Audit
BKNR	Beekeepers Nature Reserve
DBCA	Department of Biodiversity, Conservation and Attractions (formerly Department of Parks and Wildlife (DPaW))
DMIRS	Department of Mines, Industry Regulation and Safety (formerly Department of Mines and Petroleum (DMP))
EP	Environment Plan
<i>EPBC Act</i>	<i>Environment Protection and Biodiversity Conservation Act 1999</i>
ERP	Emergency Response Plan
JPF	Jingemia Production Facilities
MNES	Matter of National Environmental Significance
PEC	Priority Ecological Community
RCMA	RCMA Australia Pty Ltd
TEC	Threatened Ecological Community
VMP	Vegetation Management Plan

Related Documents

Document #	Document Name
RCMA-02-EM-PLN-001	Cervantes 1 Conventional Well Environment Plan
RCMA-02-EM-PLN-003	Cervantes 1 Hygiene Management Plan
RCMA-02-EM-PLN-006	Cervantes 1 Site Preparation Plan
RCMA-02-EM-PLN-007	Cervantes 1 Fauna Management Plan
RCMA-02-EM-PLN-008	Cervantes 1 Rehabilitation Plan
RCMA-07-TM-FM-004	Cervantes 1 Induction

1. Introduction

RCMA Australia Pty Ltd (RCMA) propose to drill the Cervantes 1 conventional oil exploration well within Production Licence L14. Cervantes 1 is located within the Beekeepers Nature Reserve (BKNR) 10 km south of Dongara in Western Australia. The 'C' class nature reserve was established in 1979 for the purpose of apiculture and the conservation of flora over an area of more than 10,000 ha.

2. Vegetation Management Objective

The objective of this vegetation management plan (VMP) is to protect flora and vegetation so that biological diversity and ecological integrity are maintained.

Table 1 presents a table of the Ministerial Statement condition requirements with reference to the section they are addressed in the Vegetation Management Plan (VMP).

3. Responsibility and Accountability

3.1 Responsibilities

The RCMA Operations Manager has overall responsibility for the safe and environmentally acceptable management of the operation. The Project Manager must ensure that the commitments and requirements of this VMP are implemented. All personnel, contractors and visitors must adhere to the requirements of this VMP.

3.2 Training

Training on relevant sections of this VMP will be incorporated into the Cervantes 1 Induction [RCMA-07-TM-FM-004]. Upon completion, trained personnel will be signed off and recorded in the training log along with the date and the specific induction for which training was conducted. All personnel and contractors are required to undertake the induction. Visitors accompanied by an inducted person are not required to complete the induction for the purposes of this VMP.

Commitment #	Commitment	Responsibility	Timing
1.	All personnel and contractors undertake the Cervantes 1 Induction [RCMA-07-TM-FM-004] and the records are included in the training log	Project Manager	At all stages of the Cervantes 1 Project

Table 1: Ministerial Statement Conditions

Condition	Subject	Requirement	Management Plan Location
1178:M01.2	Limitation and Extent of Proposal (Physical element)	When implementing the proposal, the proponent shall ensure the proposal does not exceed the Disturbance footprint (Up to 7 ha)	Achieved through the measures outlined in Section 6.1
1178:M01.3	Limitation and Extent of Proposal (Physical element)	When implementing the proposal, the proponent shall ensure the proposal does not exceed the following extent of direct disturbance of native vegetation (Up to 5.3 ha)	Achieved through the measures outlined in Section 6.1 with trigger criteria presented in Section 9
1178:M03.1.1	Flora and Vegetation Outcomes	The proponent shall ensure the following outcomes are achieved: no more than 0.99 ha direct disturbance to Coastal sands dominated by <i>Acacia rostellifera</i> , <i>Eucalyptus oraria</i> and <i>Eucalyptus obtusiflora</i> PEC;	Outcomes will be achieved through the measures outlined in Section 7
1178:M03.1.2	Flora and Vegetation Outcomes	The proponent shall ensure the following outcomes are achieved: avoid impacts from the implementation of the proposal to flora and vegetation from changes to fire regime, dieback (<i>Phytophthora</i> spp) and weeds.	Outcomes will be achieved through the measures outlined in Section 6
1178:M08.1	Environmental Management Plan(s): Monitoring and Adaptive Management Program	<p>Prior to ground disturbance and for approval, the proponent must prepare and submit to the CEO Environmental Management Plan(s) to substantiate that the outcomes of condition 4 will be met. The Plans must include:</p> <ol style="list-style-type: none"> (1) threshold criteria that provide a limit beyond which the environmental outcomes are not achieved; (2) trigger criteria that will provide an early warning that the environmental outcomes are not likely to be met; (3) monitoring parameters, sites, control/reference sites, methodology, timing and frequencies which will be used to measure threshold and trigger criteria. Include methodology for determining alternate monitoring sites as a contingency if proposed sites are not suitable in the future; (4) baseline data; (5) data collection and analysis methodologies; 	Section 4, 5, 6, 7.3, 8 and 9 outline the elements required in this management plan under this condition

Condition	Subject	Requirement	Management Plan Location
		(6) adaptive management methodology; and (7) contingency measures which will be implemented if threshold or trigger criteria are met.	
1178:M08.2	Environmental Management Plan(s): Monitoring and Adaptive Management Program	The exceedance of a threshold criteria (regardless of whether threshold contingency measures have been or are being implemented), and / or failure to comply with the requirements of the Environmental Management Plan represents a non-compliance with these conditions.	Section 11.1, Table 15 outlines the definition of a non-compliance
1178:M08.3	Environmental Management Plan(s): Monitoring and Adaptive Management Program	The proponent must not commence operations until the CEO, on advice from DBCA, has confirmed in writing that the Environmental Management Plan(s) satisfies the requirements of this condition.	Operations will not commence until EPA approves this Management Plan
1178:M09.1.1	Environmental Management Plan(s): General Provisions	After receiving notice in writing from the CEO that the management plan(s) for conditions 4 of this Statement satisfy the requirements of condition 8 respectively, the proponent shall implement the proposal in accordance with the management plans	The proposal will be implemented in accordance with this Management Plan
1178:M09.1.2	Environmental Management Plan(s): General Provisions	After receiving notice in writing from the CEO that the management plan(s) for conditions 4 of this Statement satisfy the requirements of condition 8 respectively, the proponent shall continue to implement the approved plans and programs until the CEO has confirmed by notice in writing that it has been demonstrated that the condition requirements have been met and therefore the implementation of the actions is no longer required	The proposal will continue to be implemented in accordance with this Management Plan until the CEO confirms that all the conditions have been met
1178:M09.2	Environmental Management Plan(s): General Provisions	The proponent may review and revise the management plan(s).	Section 12

Condition	Subject	Requirement	Management Plan Location
1178:M09.3	Environmental Management Plan(s): General Provisions	The proponent shall review and revise the management plan(s) as and when directed by the CEO.	Section 12
1178:M09.4	Environmental Management Plan(s): General Provisions	The proponent shall implement the latest version of the management plan(s), which the CEO has confirmed by notice in writing, satisfies the requirements of conditions 4 and 8 respectively.	Revision Control on Page 3
1178:M09.5	Environmental Management Plan(s): General Provisions	Despite condition M9.4, but subject to conditions M9.6 and M9.7, the proponent may implement minor revisions to a management plan(s) if the revisions will not result in any new or increased adverse impacts to the environment or result in a risk to the achievement of the management plan(s) limits, outcomes or objectives.	Section 12
1178:M09.6	Environmental Management Plan(s): General Provisions	If the proponent is to implement minor revisions to a management plan(s) under condition 9-5, the proponent must provide the CEO with the following at least twenty (20) business days before it implements the revisions: <ul style="list-style-type: none"> (1) revised management plan(s) clearly showing the minor revisions; (2) explanation of reasons for the minor revisions; and explanation of why the minor revisions will not result in a new or increased adverse impacts to the environment or result in a risk to the achievement of the management plan limits, outcomes or objectives.	Section 12
1178:M09.7	Environmental Management Plan(s): General Provisions	The proponent must cease to implement any revisions which the CEO notifies the proponent in writing may not be implemented.	Section 12
1178:M09.8	Environmental Management Plan(s): General Provisions	Management Plans must be provided in electronic form suitable for publication on the EPA website within ten (10) business days of endorsement, and also be provided on the proponent's website.	Section 12

4. Baseline Vegetation Studies

The Project Area has been subjected to a number of previous surveys (Table 2). Although these surveys were undertaken 15 - 16 years ago, the surveys that have been undertaken are reliable and comprehensive (Woodman 2020). This includes the Denison 3D Seismic Survey Flora and Vegetation Study (Woodman Environmental 2005) which covers the entire proposed development envelope.

A desktop survey and two field surveys of the Cervantes 1 proposed development envelope have been conducted in 2020 with the results summarised in Sections 4.1 and 4.2 below.

Table 2: Baseline Field Surveys – Flora and Vegetation

Year Completed	Consultant	Survey Name
2003	Hart, Simpson and Associates Pty Ltd.	Proposed EP 413 Denison 3D Seismic Survey Flora and Fauna Investigation - prepared for Origin Energy
2003	Woodman Environmental	Cliff Head Development Oil Pipeline and Processing Plant Flora, Vegetation and Phytophthora cinnamomi Survey – prepared for ROC Oil Company Ltd. (ROC Oil)
2005	Woodman Environmental	Denison 3D Seismic Survey Flora and Vegetation Study – prepared for ARC Energy Pty Ltd / Origin Energy

4.1 Desktop

4.1.1 Regional Biogeography

The proposal is within the Geraldton Sandplains Interim Biogeographic Regionalisation for Australia Bioregion (DoEE, 2012). The vegetation of the region is described as scrub heath on sandplains near the coast, composed mainly of proteaceous shrub-heaths, rich in endemics, on the sandy earths of an extensive, undulating, lateritic sandplain (Beard 1990; Desmond and Chant 2001).

The proposal occurs specifically within the Geraldton Sandplains 3 (Lesueur Sandplain) subregion. The subregion contains shrub-heaths rich in endemics occurring on a mosaic of lateritic mesas, sandplains, coastal sands and limestones (Desmond and Chant 2001).

4.1.2 Regional Vegetation

Beard (1976) mapped vegetation of the Dongara area (including the proposed development envelope) related to physiognomy, at a scale of 1:1250,000. The vegetation mapping by Beard (1976) was used by Shepherd et al. (2002) and further updated in Beard et al. (2013) to describe vegetation system associations, at a scale of 1:250,000. A total of three vegetation system associations occur in the proposed development envelope, as summarised in Table 3. The majority (>99%) of the proposed development envelope is mapped as Greenough_432.

Table 3: Vegetation System Associations within Proposal Area

Vegetation System Association	Description	Current Extent (ha)	Pre-European Extent Remaining (%)	Current Extent Protected for Conservation (%)
Cliff Head_772	Shrublands; <i>Acacia lasiocarpa</i> and <i>Melaleuca acerosa</i> heath	4,615.26	95.61	81.15
Greenough_432	Shrublands; <i>Acacia rostellifera</i> and <i>Melaleuca cardiophylla</i> thicket	883.22	73.19	22.54

Vegetation System Association	Description	Current Extent (ha)	Pre-European Extent Remaining (%)	Current Extent Protected for Conservation (%)
Greenough_17	Shrublands; <i>Acacia rostellifera</i> thicket	8,098.26	48.02	10.49

4.1.3 Conservation Significant Vegetation

The interrogation of the DBCA TEC and PEC Database (DBCA 2019d) returned one significant community that has a record in the Desktop Study Area (Table 4). This community is located approximately 9 km north of the Proposal Area. The Subtropical and Temperate Coastal Saltmarsh Threatened Ecological Community (TEC) / Priority Ecological Community (PEC) is described as an assemblage of plants, animals and micro-organisms associated with saltmarsh in coastal regions of sub-tropical and temperate Australia under tidal influence (DBCA 2019b). The search of the DoEE SPRAT for Matters of National Environmental Significance (MNES) listed under the *Environment Protection Biodiversity Conservation Act 1999 (EPBC Act)* database did not return any TECs listed under the *EPBC Act*, which occur or have the potential to occur within the vicinity of the Desktop Study Area.

Table 4: Significant Vegetation Returned from DBCA Database Searches

Community	Conservation Status (WA)	EPBC Act Ranking
Subtropical and Temperate Coastal Saltmarsh	Priority 3	Vulnerable

4.1.4 Priority Flora

The desktop assessment identified a total of 19 significant flora taxa or habitat for significant taxa, which are known from within the Desktop Study Area including 16 DBCA-classified Priority flora, and six Threatened flora (Table 5). A likelihood of occurrence assessment taking into account vegetation communities mapped within the Proposal Area, identified a total of five significant flora taxa (all priority listed taxa) which are considered to potentially occur in the proposed development envelope including *Anthocercis intricata* (P3), *Dampiera tephrea* (P2), *Eucalyptus zopherophloia* (P4), *Haloragis foliosa* (P3) and *Thryptomene* sp. Lancelin (M.E. Trudgen 14000) (P3). The remaining 16 significant taxa are considered unlikely to occur primarily because suitable habitat is not considered to be present in the Proposal Area.

Table 5: Significant Flora Taxa Known from Within the Desktop Study Area

Taxon	Status	Source*
<i>Acacia telmica</i>	P3	DBCA
<i>Anthocercis intricata</i>	P3	DBCA; HAS; WEC
<i>Baeckea</i> sp. Walkaway (A.S. George 11249)	P3	DBCA; WEC
<i>Beyeria gardneri</i>	P3	DBCA
<i>Caladenia hoffmanii</i>	Threatened	DoEE
<i>Conostylis dielsii</i> subsp. <i>teres</i>	Threatened	DoEE
<i>Conostylis micrantha</i>	Threatened	DoEE
<i>Dampiera tephrea</i>	P2	DBCA; WEC
<i>Eucalyptus ebbanoensis</i> subsp. <i>photina</i>	P4	DBCA
<i>Eucalyptus impensa</i>	Threatened	DoEE

Taxon	Status	Source*
<i>Eucalyptus zopherophloia</i>	P4	DBCA; HAS; WEC
<i>Haloragis foliosa</i>	P3	DBCA; HAS
<i>Liparophyllum congestiflorum</i>	P4	DBCA
<i>Scholtzia calcicola</i>	P2	DBCA
<i>Stawellia dimorphantha</i>	P4	DBCA; WEC
<i>Stylidium</i> sp. Three Springs (J.A. Wege & C. Wilkins JAW 600)	P2	DBCA
<i>Tetratheca nephelioides</i>	Threatened	DoEE
<i>Thryptomene</i> sp. Lancelin (M.E. Trudgen 14000)	P3	DBCA; WEC
<i>Wurmbea tubulosa</i>	Threatened	DoEE
*Sources are: DBCA – DBCA WA Herbarium and TPFL Databases (2019c); NatureMap – (DBCA 2007-); DoEE – DoEE (2020) HAS – Hart, Simpson and Associates (2003); WEC – Woodman Environmental (2005).		P1 - P3: Poorly known species P4: Rare, Near Threatened and other species in need of monitoring Threatened: subset of 'Rare Flora' under <i>Wildlife Conservation (Rare Flora) Notice 2018</i>

4.1.5 Vegetation Communities

The vegetation of the entire proposed development envelope has been previously mapped as part of the Denison ARC Energy / Origin Energy 3D Seismic Survey Flora and Vegetation Study (Woodman Environmental 2005). A total of four vegetation communities have been mapped within the proposed development envelope (Table 6). In addition, areas of Mobile Dunes have been mapped, described as largely bare with outer slopes characterised by a closed scrub to low closed forest of *Acacia rostellifera* and *Melaleuca cardiophylla*. Dune slopes are to be avoided as part of this project.

Table 6: Proposed Project Disturbance – Vegetation Communities

Vegetation Community		Area to be impacted by Proposal	Area of Community recorded within Denison 3D Seismic Survey Study Area	Percentage Impact on Community
H8	Heath	3.17 ha	2261.78 ha	0.137%
T2	Dense Melaleuca thicket	0.05 ha	1528.11 ha	0.003%
T3	Dense Melaleuca thicket	0.10 ha	591.54 ha	0.017%
W1	Low woodland	1.00 ha	681.07 ha	0.147%
Ar	Disturbed community	0.15	-	-
TOTAL		4.47 ha		

4.2 Field Survey

4.2.1 Significant Flora

No significant flora was recorded within the Development Envelope during targeted searching in February 2020. Two individual priority flora (single plant) were identified in the project area during the September 2020 survey:

- *Eucalyptus zopherophloia* (P4) south of the east west access route
- *Thryptomene sp. Lancelin* (P3) west of the drill pad access track



These locations are both outside the proposed disturbance area and will be avoided. The project area was searched thoroughly but no other individuals were identified.




4.2.2 Vegetation Types

Vegetation community observations are presented in Table 7 and mapping in Appendix A. It is considered that vegetation community W1 represents the state listed PEC 'Copastal sands dominated by *Acacia rostellifera*, *Eucalyptus oraria* and *Eucalyptus obtusiflora*' (P1). This PEC is described as floristically similar to other *Acacia rostellifera* communities but is differentiated on structure, being dominated by mallee eucalypts. The vegetation community occurs on limestone ridges, in some swales in the coastal dunes between Cape Burney and Dongara, on the Greenough Alluvial Flats on limestone soil and near Tarcoola Beach. Some very small occurrences have also been recorded on the limestone scarp north of the Buller River (DBCA 2019b).

This PEC was mapped locally over 681 ha during the Denison 3D Seismic Survey and the area of impact within the proposed development envelope constitutes 0.147% of this area as presented in Figure 1.

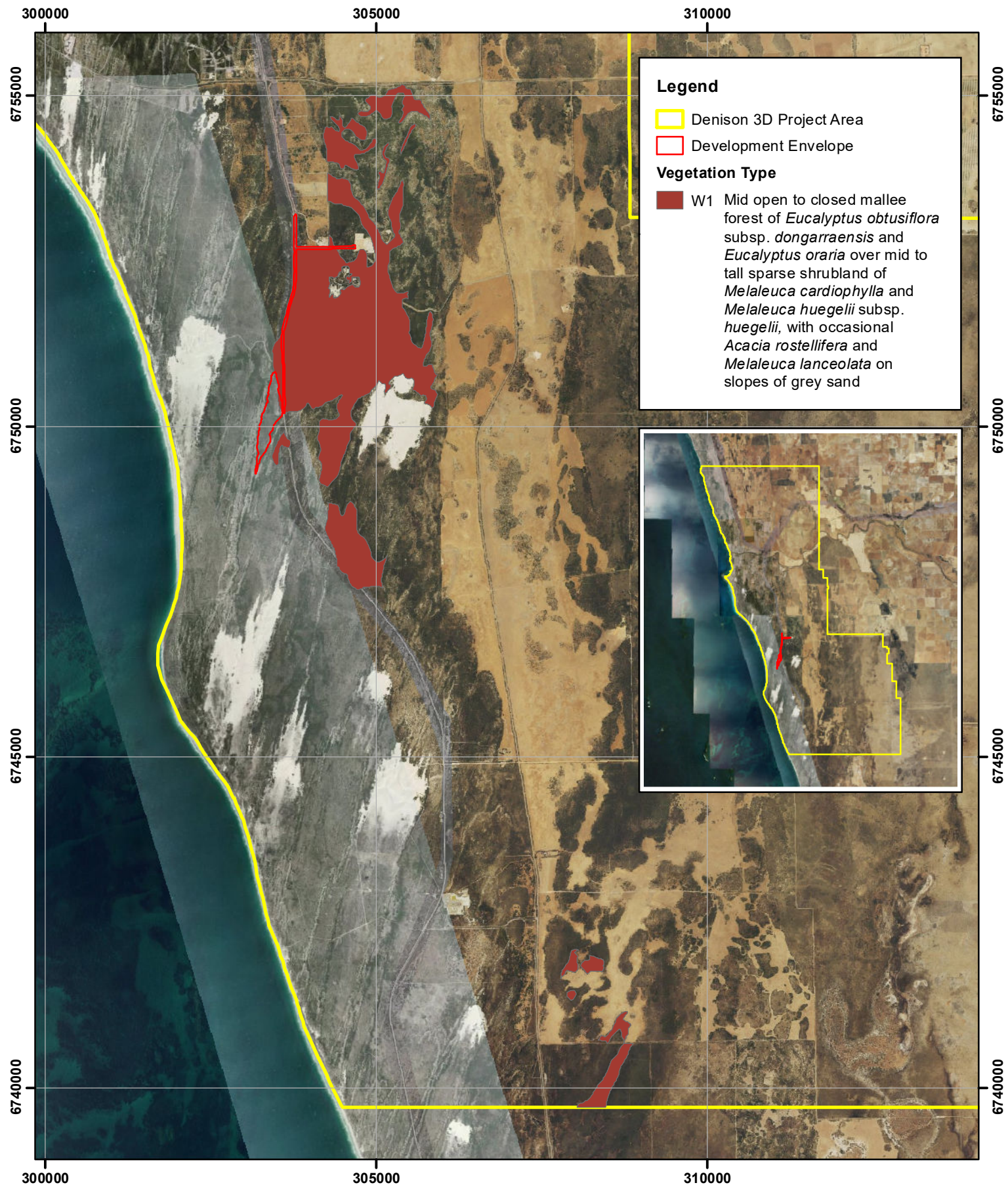
Table 7: Proposed Development Envelope Vegetation Communities

VT	Description	Image
H8	Tall to mid open shrubland of <i>Acacia rostellifera</i> , <i>Melaleuca cardiophylla</i> , <i>Melaleuca huegelii</i> subsp. <i>huegelii</i> and <i>Santalum acuminatum</i> over low sparse shrubland of <i>Melaleuca systema</i> over low open sedgeland of <i>Gahnia</i> sp. South West (K.L. Wilson & K. Frank K LW 9266) on grey clayey sand in swales between dunes. Plate 1: Vegetation Type H8 - Releve MET06	
T2	Tall closed shrubland of <i>Melaleuca cardiophylla</i> and/or <i>Melaleuca huegelii</i> subsp. <i>huegelii</i> on slopes of grey-brown sandy loam. Plate 2: Vegetation Type T2 - Releve MET12	

T3	<p>Tall closed shrubland to low sparse shrubland of <i>Acacia rostellifera</i>, <i>Melaleuca cardiophylla</i>, <i>Melaleuca huegelii</i> subsp. <i>huegelii</i>, <i>Melaleuca systema</i>, <i>Olearia</i> sp. Kennedy Range (G. Byrne 66) over low sedgeland of <i>Lepidosperma calcicola</i> on flats of grey-brown sandy loam.</p> <p>Plate 3: Vegetation Type T3 - Releve MET02</p>	
W1	<p>Mid open to closed mallee forest of <i>Eucalyptus obtusiflora</i> subsp. <i>dongarraensis</i> and <i>Eucalyptus oraria</i> over mid to tall sparse shrubland of <i>Melaleuca cardiophylla</i> and <i>Melaleuca huegelii</i> subsp. <i>huegelii</i>, with occasional <i>Acacia rostellifera</i> and <i>Melaleuca lanceolata</i> on slopes of grey sand.</p> <p>Plate 4: Vegetation Type W1 - Quadrat MET09</p>	
Ar	<p><i>Acacia rostellifera</i> over weeds (disturbance community)</p> <p>Plate 5: Disturbance Community Ar</p>	

4.2.3 Vegetation Condition

The vegetation condition recorded within the Project Area ranged from Excellent to Degraded with the majority of the vegetation in Excellent condition. Disturbances include weeds, clearing and disturbances associated with edge effects. The area of vegetation condition ratings for each VT in the areas to be disturbed are presented in Table 8.



W1 Vegetation Community Mapping over Region around Project Area

Author: Leah Firth

WEC Ref: Metgasco20-11-01

Filename: Metgasco20-11-01-f13

Scale: 1:75,000 (A4)

Projection: GDA 1994 MGA Zone 50

Revision: 1 - 02 July 2020



Figure

1



WOODMAN
ENVIRONMENTAL

Refer to WEC report Metgasco 20-11-01.

Table 8: Vegetation Condition Ratings for each VT in the Project Area

VT	Area Mapped (ha)							
	Cleared	Completely Degraded	Degraded	Good	Very Good	Excellent	Pristine	Total
H8	-	-	-	-	-	3.17	-	3.17
T2	-	-	(0.008)	-	-	(0.04)	-	(0.05)
T3	-	-	-	-	(0.005)	0.1	-	0.1
W1		-	0.2	0.1	0.7	(0.002)	-	1.0
Ar		-	0.15	-	-	-	-	0.15
Cleared	2.1	-	-	-	-	-	-	-
Total	2.1	-	0.36	0.1	0.7	3.3	-	4.5

5. Rationale and Approach

The well has been located specifically to avoid the sensitive dunes in the BKNR and minimise clearing by utilising existing tracks to the well pad.

Regional and Local Significance

Table 9 presents the current extent of each vegetation system association in relation to the area to be impacted by the proposal. As a temporary project which will be rehabilitated, the impact on the regional vegetation system is not significant (<0.5%).

Table 9: Vegetation Systems Disturbance

Vegetation System Association	Current Regional Extent (ha)	Vegetated Area to be impacted by Proposal	Impact on Regional Vegetation
Cliff Head_772	4,615.26 ha	0.04 ha	0.00%
Greenough_432	883.22 ha	4.42 ha	0.50%
Greenough_17	8,098.26 ha	0.01 ha	0.00%
TOTAL		4.5 ha	

Locally, the vegetation communities to be impacted include H8, W1, T2 and T3 with the majority of clearing proposed to occur within H8 and W1. Potential impacts of the proposal on any single vegetation community are presented in Table 10. Proposed impacts on these vegetation communities are considered very low with proposed impacts to vegetation communities all well below 1% of the area recorded for each during the Denison 3D Seismic Survey.

Vegetation community W1 has affinities with the Coastal sands dominated by *Acacia rostellifera*, *Eucalyptus oraria* and *Eucalyptus obtusiflora* PEC (P1). The proposal will not have a significant impact on this vegetation type (<0.147%) as identified during the Denison 3D Seismic Survey as presented in Table 10.

Table 10: Proposed Vegetation Communities Disturbance

Vegetation Community	Vegetated Area to be impacted by Proposal	Area of Community recorded locally***	Percentage Impact on Community
H8	3.17 ha	2261.78 ha	0.140 %
T2	0.05 ha	1528.11 ha	0.003 %
T3	0.10 ha	591.54 ha	0.017 %
W1	0.99 ha	681.07 ha	0.145 %
Ar	0.15 ha	-	-
TOTAL	4.6 ha		

***within Denison 3D Seismic Survey Study Area

Conservation Significant Vegetation

Two priority flora (individual plants) have been identified within the development envelope during Spring survey however both are outside of the Project Area. Extensive searching on a 10-15m grid was undertaken in the Project Area to ensure that there were no individuals within the Project Area and that there would be no impact on significant flora due to the Project. Both

locations where the priority flora were identified will be flagged prior to site preparation to ensure that a 2m separation distance is maintained from the priority flora. Given the relatively minor impacts to the vegetation communities presented in Table 10 and based on the absence of conservation significant taxa in the project footprint, any potential impacts of the proposal are not significant.

Rationale

RCMA have minimised their footprint through the use of existing tracks for the entire access route of their project. The required area of clearing for the Project has been reduced as far as practicable through design of the site layout. The Site Plan will be prepared in accordance with this MP and include the requirements for:

- Flora and vegetation survey identifies sensitivities to avoid
- Areas to be cleared will be clearly demarcated
- Cleared vegetation to be stockpiled separately from topsoil and in windrows less than 2 m high
- Induction of construction personnel on areas approved for clearing

The acceptability of the flora risks to the activity were assessed and based on the risk treatments implemented and the residual risk is deemed to be acceptable without the need to implement further controls.

6. Avoidance and Mitigation

6.1 Land Clearing

Commitment #	Commitment	Responsibility	Timing
2.	The area of land disturbance for the Cervantes 1 Project will be kept to the practicable minimum (including the drilling of a directional well)	Project Manager	Land Clearing
3.	Cleared areas no longer required for the project will be progressively rehabilitated	Project Manager	At all stages of the Cervantes 1 Project
Planning - Site Preparation Plan			
4.	<p>A Site Preparation Plan is prepared and approved by the Project Manager to specify all details of site preparation requirements:</p> <ul style="list-style-type: none"> • Areas to be cleared are clearly demarcated • Sensitivities identified in the flora and vegetation survey are avoided where possible • Site preparation activities occur during daylight hours only • Cleared vegetation is stockpiled in windrows less than 2 m high and separately stockpiled topsoil is lightly compacted in windrows to a height of no more than 2 m • All Crew have undertaken the site preparation induction [RCMA-07-TM-FM-004] • Vehicles and equipment to be used only within approved project footprint (specify areas) • Vehicles must be inspected and cleaned down (off site prior to mobilisation) • Construction refuelling vehicle to have refuelling drip tray, spill kit and contaminated soil bunding tarp (for segregation of material if a spill occurs prior to disposal) • Construction refuelling vehicle is on site during daylight hours only • Construction vehicles are left locked when unattended • Construction light vehicles preferentially refuel offsite • Sheeting materials are from Pearson (ex-Grice) marl borrow pit only with all borrow pit topsoil excluded 	Project Manager	Prior to Site Preparation

Commitment #	Commitment	Responsibility	Timing
Planning - Approvals and Permits			
5.	No clearing will be undertaken until the Project Manager has approved and issued the Site Preparation Plan	Earthmoving Supervisor	Prior to Clearing Activity
6.	The Site Preparation Plan cannot be issued until Department of Mines, Industry Regulation and Safety (DMIRS) has accepted the Cervantes 1 Conventional Well Environment Plan [RCMA-02-EM-PLN-001]	Project Manager	Prior to Clearing Activity
Planning - Awareness			
7.	All site preparation personnel will receive instructions on the areas approved for clearing in the form of the Cervantes 1 Induction [RCMA-07-TM-FM-004] and toolbox meetings	Earthmoving Supervisor	Prior to Clearing Activity
Planning - Schedule			
8.	All vegetation clearing is to occur in daylight hours only	Earthmoving Supervisor	During Clearing Activity
Minimisation of Land Clearing			
9.	Clearing is undertaken to the extent necessary for the activity only	Project Manager	Prior to Clearing Activity
		Earthmoving Supervisor	During Clearing Activity
Clearing Methodology			
10.	Sensitivities identified in the flora and vegetation survey are avoided where possible	Earthmoving Supervisor	Clearing Activities
11.	Areas to be cleared are clearly demarcated	Earthmoving Supervisor	Clearing Activities
12.	Cleared vegetation is stockpiled in windrows less than 2 m high and separately stockpiled topsoil is lightly compacted in windrows to a height of no more than 2 m and covered in brush	Earthmoving Supervisor	Clearing Activities
13.	All Crew have undertaken the site preparation induction [RCMA-07-TM-FM-004]	Earthmoving Supervisor	Clearing Activities
14.	Vehicles and equipment to be used only within approved project footprint (specify areas)	Earthmoving Supervisor	Clearing Activities

Commitment #	Commitment	Responsibility	Timing
Documentation			
15.	The person undertaking clearing is required to fill in a Clearing Vegetation Record Form [RCMA-02-EM-FM-002] (Appendix B) for clearing activities to provide a record of all clearing undertaken for the Project	Person Undertaking Clearing	Post Clearing Activities
16.	The Earthmoving Supervisor is required to submit completed Clearing Vegetation Record Forms [RCMA-02-EM-FM-002] (Appendix B) for all clearing activities undertaken for the Project	Earthmoving Supervisor	Post Clearing Activities
Vegetation Survey			
17.	If there were to be any additional vegetation clearing required, the VMP would require review and the identification of the requirement for any additional flora survey made well in advance of operations	Project Manager	Prior to Clearing Activities

6.2 Hygiene Management

Commitment #	Commitment	Responsibility	Timing
Awareness			
18.	Induction of personnel [RCMA-07-TM-FM-004] outlines the Project hygiene requirements	Project Manager	Prior to Clearing Activities
Hygiene Methodology			
19.	Sheeting materials are from Pearson (ex-Grice) marl borrow pit only	Earthmoving Supervisor	Site Preparation
20.	Borrow pit is managed to minimise the risk of weed transfer (topsoil exclusion during out loading)	Earthmoving Supervisor	Site Preparation
21.	Vehicles must be inspected and cleaned down (off site prior to mobilisation). Offsite clean down must ensure vehicle is free of all soil and plant matter as per requirements of Cervantes 1 Hygiene Procedure [RCMA-02-EM-PRO-001] Section 6	Earthmoving Supervisor	Prior to Mobilisation to Site
22.	A hygiene station is established at Jingemia Production Facility (JPF) during site preparation activities (including lined pad with drainage sump, brushes/brooms and weatherproof container for hygiene inspection log)	Earthmoving Supervisor	Site Preparation

Commitment #	Commitment	Responsibility	Timing
23.	Vehicles and equipment are to arrive on site in a clean state and conduct inspection on site at JPF hygiene station in accordance with the Hygiene Procedure [RCMA-02-EM-PRO-001] including sign off on the hygiene inspection log	Earthmoving Supervisor	At all stages of the Cervantes 1 Project
24.	Personnel are required to complete the induction which outlines weed and dieback hygiene requirements	Earthmoving Supervisor	Prior to Mobilisation to Site

6.3 Fire Management

Commitment #	Commitment	Responsibility	Timing
25.	Firebreaks shall be maintained and constructed in compliance with statutory requirements to provide protection to adjacent undisturbed remnant vegetation from a potential fire from the Project ie vegetation cleared to 100 mm: <ul style="list-style-type: none"> 1m on either side of access tracks 10 m around the well site 	Project Manager	At all stages of the Cervantes 1 Project
26.	Smoking is permitted in designated areas only	All Personnel	At all stages of the Cervantes 1 Project
27.	All site vehicles have serviceable fire extinguishers	Project Manager	At all stages of the Cervantes 1 Project
28.	Serviceable fire extinguishers are in place in accordance with the (ERP) rig diagram	Drilling Superintendent	During Drilling
29.	A mobile water cart is on site at the times specified in the ERP	Project Manager	At all stages of the Cervantes 1 Project

6.4 Other Commitments

Commitment #	Commitment	Responsibility	Timing
<i>Access Tracks and Off-Road Travel</i>			
30.	To prevent impact on native vegetation outside the project footprint, all personnel shall only drive on existing tracks, access roads, firebreaks, and service corridors. No travel outside designated access routes shall occur without the approval of the Project Manager	Project Manager	At all stages of the Cervantes 1 Project

Commitment #	Commitment	Responsibility	Timing
Dust			
31.	All personnel shall adhere to vehicle speed limits as sign posted and outlined in the induction to prevent dust from accumulating on vegetation	All Personnel	At all stages of the Cervantes 1 Project
32.	Should concerns of dust be raised, suppression measures will be investigated	Project Manager	At all stages of the Cervantes 1 Project
Surface Water Drainage			
33.	Where surface water drainage requires diversion away from operational areas, roads and other areas, the diversion shall be managed such that adjacent undisturbed remnant vegetation is protected from long-term inundation	Project Manager	At all stages of the Cervantes 1 Project
Completion Criteria Monitoring			
34.	Completion criteria monitoring is to continue annually until all completion criteria have been achieved.	Project Manager	Post Rehabilitation

7. Monitoring

7.1 Inspections

Routine Site Inspection

Routine site inspections are undertaken as per Table 11.

Table 11: Routine Site Inspections

#	Stage	Frequency	Inspection Descriptor
5.1.1	Site Preparation	Daily	Ground Condition Checks as part of Daily Vehicle Checks
5.1.2	End of Site Preparation	Once	Site Preparation Plan Check
5.1.3a	Drilling	Daily	Site Visual Inspection
5.1.3b	Well Testing	Daily	Site Visual Inspection
5.1.4	Care & Maintenance	Weekly	Visual Site Inspection (Security) noted on Daily Logbook
5.1.5	Decommissioning / Rehabilitation	Daily	Ground Condition Checks as part of Daily Vehicle Checks

#	Stage	Frequency	Inspection Descriptor
5.1.6	Post Decommissioning / Rehabilitation Activity	On Activity	Decommissioning / Rehabilitation Plan Check
5.1.7	Post Rehabilitation	Monthly	Visual Site Inspection [Workplace Inspection Checklist]

7.2 Compliance Auditing

Auditing of the management measures outlined in this VMP shall be undertaken as part of AIEA. Persons responsible for environmental auditing will be suitably qualified. Where audit findings show that environmental management actions are not effective, the audit may recommend changes to procedures. The AIEA will be undertaken as per the schedule in Table 12.

Table 12: Environmental Auditing

#	Timing
5.2.1	During or immediately post site preparation
5.2.2a	During drilling activities
5.2.2b	During well testing activities
5.2.3	During remediation / rehabilitation activities
5.2.4	Annual internal environmental audit (AIEA) - To continue annually where no activities are being undertaken on site until completion criteria has been achieved

7.3 Completion Criteria Monitoring

Weed, dieback and (when applicable) rehabilitation monitoring is conducted on an annual basis commencing within one year following the cessation of the Cervantes 1 drilling activity (when phot monitoring points will be established). The requirements of the monitoring are presented in Table 13. Completion criteria monitoring is to continue until completion criteria is achieved. Monitoring will continue until completion criteria have been determined to be met in consultation with DMIRS and DBCA.

Table 13: Weed, Dieback and Rehabilitation Monitoring

Aspect	Objective	Scope
<i>Photographs at Monitoring Points</i>		
Weed	Ensure weeds are managed to prevent their spread and establishment	<ul style="list-style-type: none"> Observe weed cover Recommend weed management

Aspect	Objective	Scope
Dieback	Ensure if dieback is introduced it is identified	<ul style="list-style-type: none"> • Observe suspicious vegetation deaths • Make recommendations on requirement for dieback survey
Rehabilitation	Ensure rehabilitation is progressing towards completion criteria	<ul style="list-style-type: none"> • Assess rehabilitation against completion criteria • Make recommendations to encourage rehabilitation success

8. Rehabilitation Management

Details of the rehabilitation program are included in the Rehabilitation Plan [RCMA-02-EM-PLN-008]. It has been approved by DBCA and EPA It outlines:

- Current Conditions and Issues
- Risk Assessment
- Earthworks and Site Preparation to be undertaken
- Propagule Introduction and Fertilising
- Closure and Specific Completion Criteria consistent with specific, measurable, attainable, relevant, time-bound (SMART) criteria
- Thresholds and Triggers
- Responsibility and Accountability
- Supervision & Schedule
- Monitoring and Maintenance
- Reporting and Review

Rehabilitated areas will be monitored to ensure the success of the rehabilitation program. Monitoring will be carried out against completion criteria on a regular basis to assess:

- The physical stability of the landform of rehabilitated areas
- The establishment of the vegetation in rehabilitated areas

Monitoring will cease when the rehabilitation objectives and completion criteria have been achieved. The results of these management and monitoring activities will be detailed in the Annual Environmental Report (AER) and Compliance Assessment Report.

9. Thresholds and Triggers

Table 14 presents the threshold criteria that provide a limit beyond which the vegetation outcomes are deemed not to have been achieved. It provides the trigger criteria that will provide an early warning that the vegetation outcomes are not likely to be met, how the criteria will be monitored and contingency measures that will be implemented if threshold or trigger criteria are met.

Table 14: Cervantes Vegetation Management Plan Thresholds and Triggers

#	Threshold Criteria	Trigger Criteria	Monitoring	Contingency Measures
1.	Disturbance of ≤ 5.3 ha of native vegetation	Disturbance of 5 ha of native vegetation	<ul style="list-style-type: none"> Survey prior to ground disturbing activities demarcating areas to be cleared Daily inspections compare cleared areas with survey markers Post clearing survey 	<ul style="list-style-type: none"> Reporting clearing outside of permitted area to DWER, DBCA and DMIRS Rehabilitation of non-permitted cleared area immediately
2.	Disturbance of ≤ 0.99 ha of Priority Ecological Community 'Coastal sands dominated by <i>Acacia rostellifera</i> , <i>Eucalyptus oraria</i> and <i>Eucalyptus obtusiflora</i> ' (PEC)	Disturbance of 9,000 m ² of PEC		
3.	No fire entering native vegetation originating from Cervantes 1 Activity	Fire any location, any size at Cervantes 1 Activity	<ul style="list-style-type: none"> Daily inspections ensure fire response equipment is in place, ignition sources are not left unattended, vehicles are parked in cleared areas and good housekeeping is in place Vehicle and equipment logbooks show that vehicles and equipment are maintained in accordance with service schedule to minimise risk of fire Audit ensures that all vehicles and equipment is maintained in accordance with service schedules to minimise risk of fire Drilling Project Manager monitors the DFES fire alerts Training records show that all required personnel have completed training at the required intervals; basic firefighting, site induction, emergency exercises 	<ul style="list-style-type: none"> Implement Emergency Response Plan Contact Emergency Services and DBCA All fires are reported as per Section 11.3 of the Cervantes 1 EP
4.	No introduction of dieback	Hygiene Procedure violation	<ul style="list-style-type: none"> Daily inspection of construction hygiene station including hygiene register Audit of hygiene records against vehicle movements Annual rehabilitation dieback site assessment 	<ul style="list-style-type: none"> Hygiene procedure review Dieback interpreter engaged Consultation with DBCA Reporting as per Section 11.3 of the Cervantes 1 EP
5.	The foliage cover of weeds in rehabilitation areas should not be greater than adjacent undisturbed remnant vegetation ^(Note 1)	Weed control program is not managing weeds in rehabilitation areas to foliage cover less than 80% of adjacent undisturbed remnant vegetation ^(Note 1)	<ul style="list-style-type: none"> Daily inspection of construction hygiene station including hygiene register Monthly weed inspections Annual monitoring of weed cover 	<ul style="list-style-type: none"> Review of weed control program and implement revised program Review of hygiene procedures Consultation with DBCA Reporting as per Section 11.3 of the Cervantes 1 EP

Note 1-Tracks are affected by the weed load on the opposite side of the track. The "edge effect" in comparison with adjacent track edge will be considered for the application of this completion criteria on tracks

10. Stakeholder Consultation

RCMA has consulted with key stakeholders in relation to its Cervantes 1 exploration activities. These stakeholders have included:

- DMIRS
- Environmental Protection Authority (EPA)
- DBCA
- Shire of Irwin
- ARC Infrastructure
- Public Transport Authority
- Yamatji Marlpa Aboriginal Corporation (YMAC)
- Yamatji Southern Regional Corporation (YSRC)
- Neighbouring hydrocarbon facility and permit owners
- Landowners

Appendix C summarises the key consultation events, topics raised and responses.

RCMA will continue to engage with stakeholders for the life of the Cervantes 1 Project.

11. Reporting

11.1 Non-Compliance Reporting

Environmental incidents shall be reported and investigated as soon as practicable following identification, enabling effective actions to be implemented without delay. Environmental incidents are defined as events that cause or could potentially cause harm to the environment. Vegetation management incidents and reporting protocols are included in Table 15. Further information is contained in the Cervantes 1 Conventional Well Environment Plan [RCMA-02-EM-PLN-001].

11.2 Clearing Recording

The person undertaking clearing is required to submit completed Clearing Vegetation Record Form/s [RCMA-02-EM-FM-002] (Appendix B) for clearing activities to provide a record of all clearing undertaken for the Project.

11.3 Annual Environmental Report

An AER is submitted to DMIRS annually under Regulation 16 of the *Petroleum and Geothermal Energy Resources (Environment) Regulations 2012*. The AER requires details of:

- Activities that have been undertaken
- Clearing or rehabilitation that has been undertaken
- Compliance for each objective and standard in the EP (includes compliance with VMP)
- Audits undertaken
- Incidents that have occurred
- Monitoring results

11.4 Compliance Assessment Report

A compliance assessment report will be submitted to EPA as per the requirements of the Compliance Assessment Plan [RCMA-02-EM-PLN-011] under the conditions of the Ministerial Statement. The report will contain evidence to substantiate statements of compliance against the requirements of this Vegetation Management Plan.

12. Adaptive Management and Management Plan Review

The need for adaptive management may be recognised in the following ways:

- Personnel undertaking routine tasks
- Routine Site Inspections (Section 7.1)
- Compliance Audit (Section 7.2)
- Completion Criteria Monitoring (Section 7.3)
- Near miss incidents
- Incidents
- Reaching a trigger (Section 9)
- Breaching a threshold (Section 9)

This VMP is to be reviewed by RCMA:

- When the need for adaptive management not covered in this FMP is recognised
- Every second year from the commencement of operations until the achievement of rehabilitation completion criteria, to ensure it remains current
- As and when directed by the EPA

RCMA shall implement the latest version of this plan, which the EPA CEO has confirmed by notice in writing, satisfies the requirements of Ministerial Statement 1178. Minor revisions must be treated in accordance with conditions 9-5 and 9-6 of Ministerial Statement 1178. Management Plans must be provided in electronic form suitable for publication on the EPA website within ten (10) business days of endorsement, and also be provided on the proponent's website.

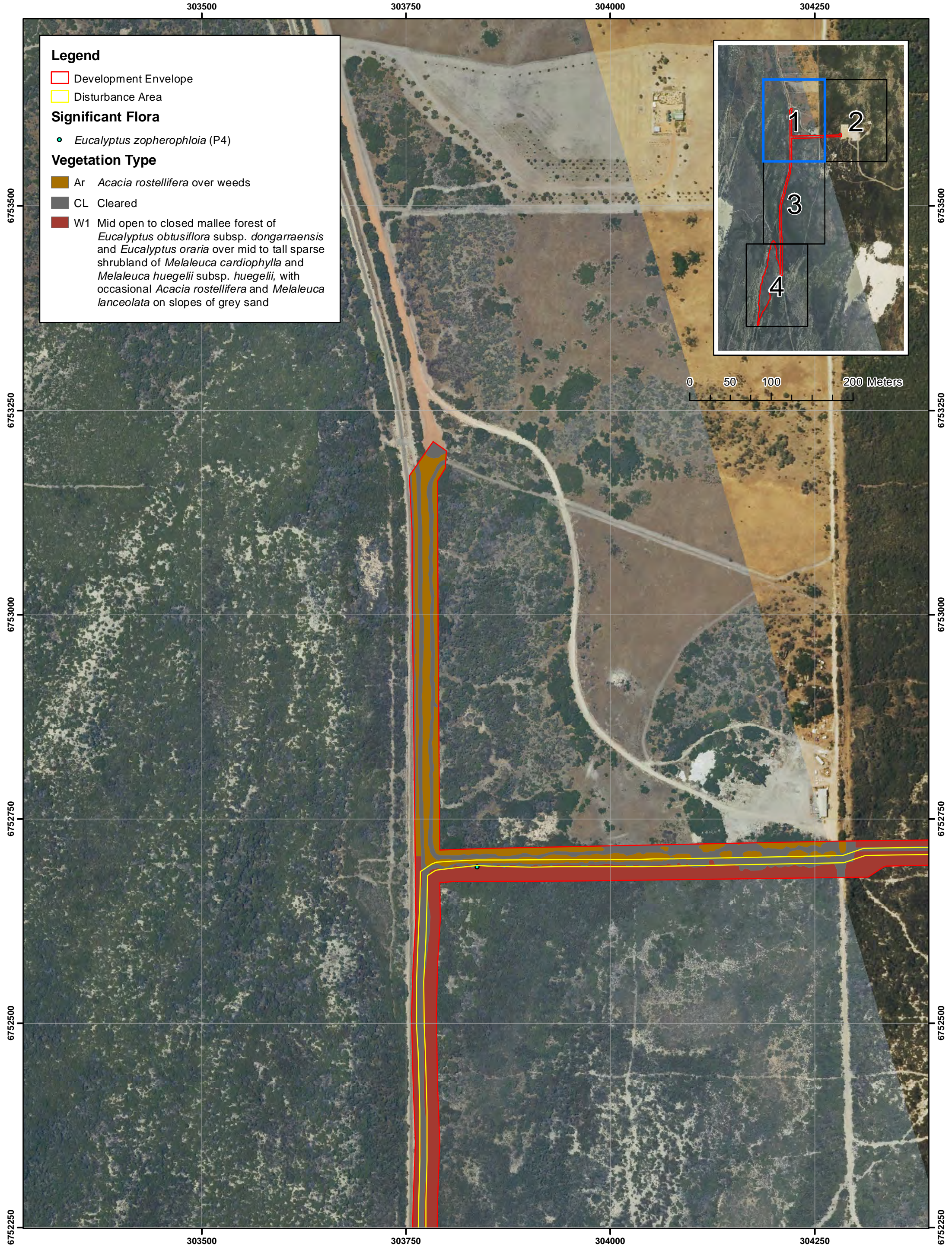
The proponent must cease to implement any revisions which the CEO notifies the proponent in writing may not be implemented.

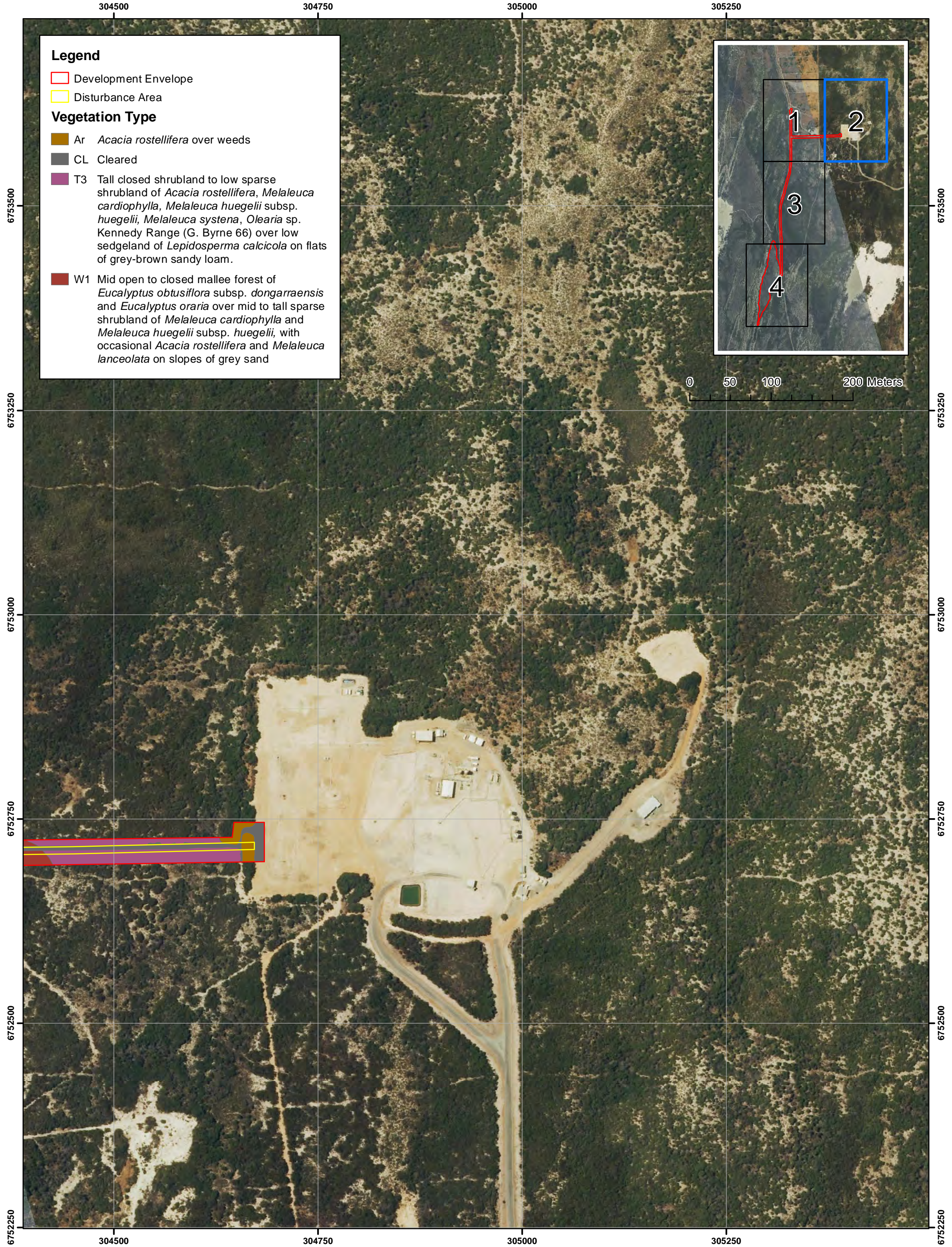
Table 15: Environmental Incident Reporting

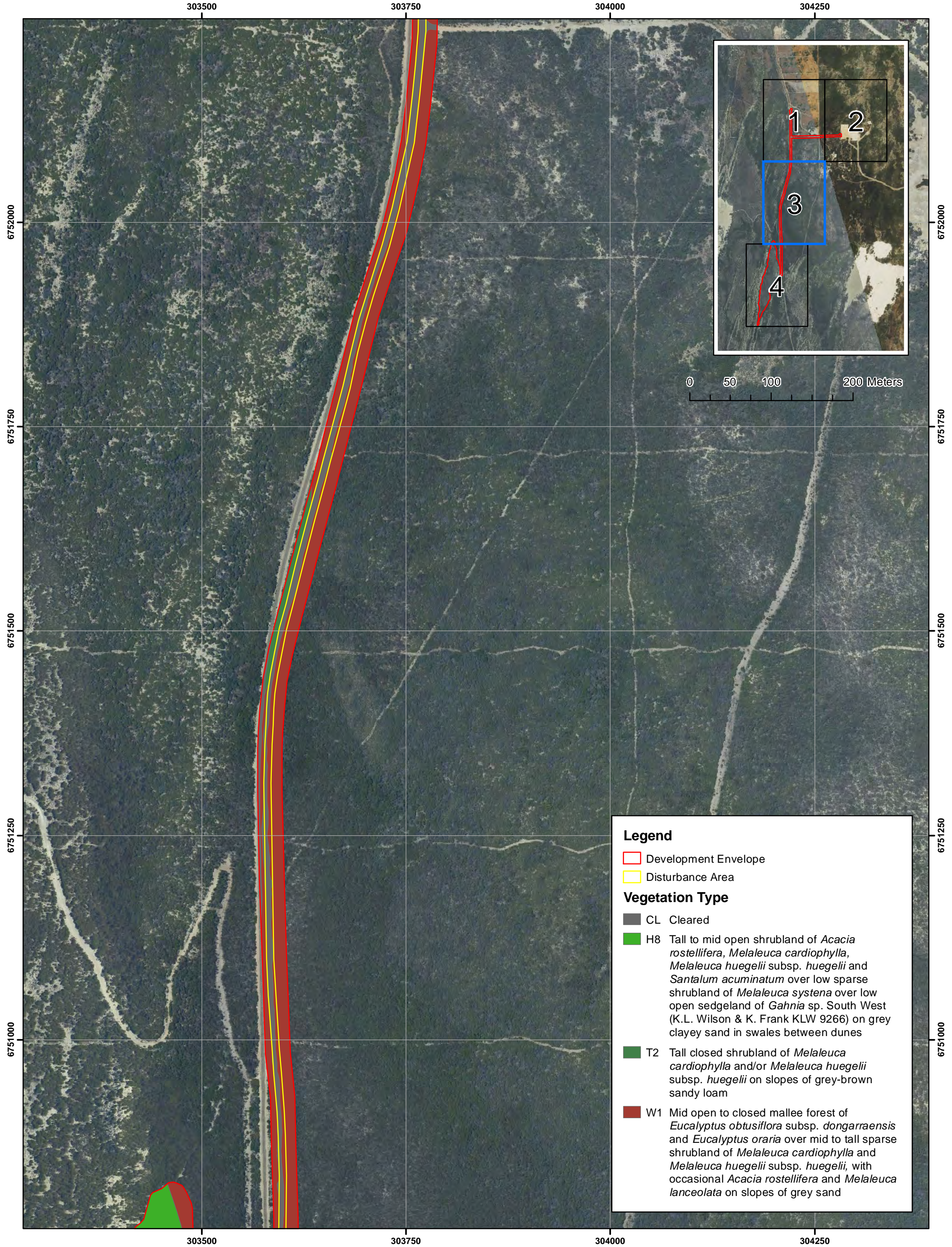
Report	Type of Incident	Frequency	Contact
RCMA Reporting	<ul style="list-style-type: none"> All incidents 	Upon discovery	Project Supervisor
DMIRS Reportable Incident	<ul style="list-style-type: none"> Illegal clearing Fire initiating from Cervantes 1 activity 	Within two hours of incident followed by a detailed written report within 3 days	In writing to petroleum.environment@dmirs.wa.gov.au or verbally on (08) 9222 3727
EPA Services Non-compliance Report	<ul style="list-style-type: none"> A limit, outcome or threshold criteria contained the Ministerial Conditions or this VMP has or is likely to be exceeded 	Within 7 days of RCMA becoming aware of followed by a further report within 21 days	Attn: EPA CEO compliance@dwer.wa.gov.au
DMIRS Recordable Incident Report	<ul style="list-style-type: none"> Noncompliance with VMP Noncompliance with Site Preparation Plan Failure to induct all personnel Noncompliance with Rehabilitation Plan 	Monthly (within 15 days of the end of the reporting period)	petroleum.environment@dmirs.wa.gov.au in the recordable incident report template
DBCA Notification	<ul style="list-style-type: none"> Fire in conservation estate 	Verbal notification immediately (mandatory)	DBCA Turquoise Coast District Duty Officer 0417 182 618
	<ul style="list-style-type: none"> Illegal impact to flora Fire in conservation estate 	ASAP	Regional Manager 08 9964 0901 GeraldtonEnquires@dbca.wa.gov.au Manager EMB 08 9219 9500 EMBAdmin@dbca.wa.gov.au
Arc Infrastructure Environmental Condition Report	The existence of environmental damage on or affecting the railway easement or there is a claim of failure of RCMA to comply with an Environmental Law or Authorisation in the railway easement.	Immediately	Hannah Mackey (08) 9442 8806 hannah.mackey@arcinfra.com

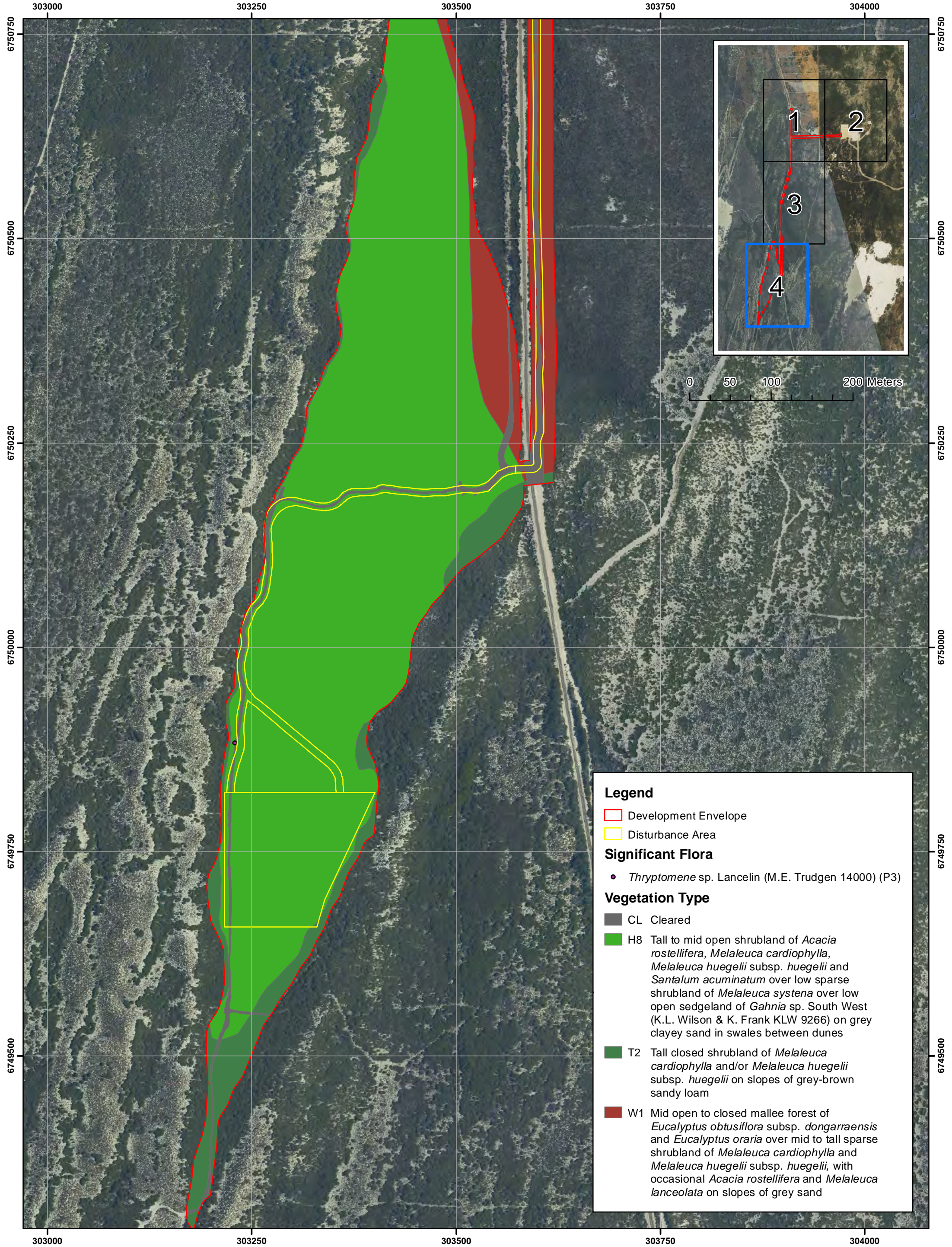
13. References

- Beard, J.S. 1976 The Vegetation of the Dongara Area Western Australia, Map and Explanatory Memoir Published by VegMap Publications, Perth.
- Beard, J.S. 1990 *Plant Life of Western Australia* Kangaroo Press, Perth.
- Beard, J. S., Beeston, G.R., Harvey, J.M., Hopkins, A. J. M. and Shepherd, D. P. 2013 *The vegetation of Western Australia at the 1:3,000,000 scale* Explanatory memoir. Second edition. Conservation Science Western Australia 9: 1-152.
- Department of Biodiversity, Conservation and Attractions (DBCA) 2019b *Priority Ecological Communities for Western Australia* Version 28. Species and Communities Program, Department of Biodiversity, Conservation and Attractions, 17th January 2019
- Department of Biodiversity, Conservation and Attractions (DBCA) 2019c Interrogation of the DBCA Western Australian Herbarium specimen database, Threatened and Priority Flora database and Threatened and Priority Flora List, performed 09/12/2019. Reference: 09-1219FL.
- Department of Biodiversity, Conservation and Attractions (DBCA) 2019d *Interrogation of the DBCA Threatened Ecological Communities and Priority Ecological Communities database*, performed 12/12/2019. Reference: 09-01212EC.
- Department of Biodiversity, Conservation and Attractions (DBCA) 2007- *NatureMap: Mapping Western Australia's Biodiversity*. Available: <https://naturemap.dpaw.wa.gov.au/> Last accessed August, 2019.
- Department of the Environment and Energy (DoEE) 2014 *Key Threatening Processes* <http://www.environment.gov.au/cgi-bin/sprat/public/publicgetkeythreats.pl> (accessed May 2014).
- Department of the Environment and Energy (DoEE) 2020 *Interrogation of Species Profile and Threats (SPRAT) Database using Protected Matters Search Tool* Queried 10/1/20, report reference JJEGBS. Available: <https://www.environment.gov.au/epbc/protected-matters-search-tool>.
- Desmond, A. and Chant, A. 2001 *Geraldton Sandplain 3 (GS3 – Lesueur Sandplain Subregion)*. A Biodiversity Audit of Western Australia's 53 Biogeographical Subregions in 2002.
- Hart, Simpson and Associates Pty Ltd. 2003 *Proposed EP 413 Denison 3D Seismic Survey. Flora and Fauna Investigation* Unpublished report to Origin Energy, November 2003.
- Shepherd, D., Beeston, G. and Hopkins, A. 2002 *Native Vegetation in Western Australia. Extent, Type and Status* Resource Management Technical Report 249. Department of Agriculture.
- Woodman Environmental 2020a *Cervantes 1 Conventional Well Level 1 Fauna Survey, Reconnaissance and Targeted Flora and Vegetation Survey* Unpublished report prepared for RCMA Australia Pty Ltd, April 2020.
- Woodman Environmental 2020b *Cervantes Conventional Well Flora, Vegetation and Fauna Desktop Assessment* Unpublished report prepared for RCMA Australia Pty Ltd, February 2020.
- Woodman Environmental 2005 *Denison 3D Seismic Survey Flora and Vegetation Study* Unpublished report prepared for Arc Energy Ltd, April 2005.
- Woodman Environmental 2003 *Cliff Head Development Oil Pipeline and Processing Plant Flora, Vegetation and Phytophthora cinnamomi Survey* Unpublished report prepared for ROC Oil Company Ltd, November 2003.









This map should only be used in conjunction with WEC project RCMA20-54-01.



Vegetation Type Mapping and Significant Flora within the Development Envelope

Revision: A - 22 Oct 2020

Scale: 1:4,000 (A3)

Author: Alison Saligari

WEC Ref: RCMA20-54-01

Filename: RCMA20-54-01-f04

Projection: GDA 1994 MGA Zone 50

Appendix

A.4

Appendix B Clearing Vegetation Record Form
[RCMA-02-EM-FM-002]

Clearing Vegetation Record Form

[RCMA-02-EM-FM-002v0]



Submitter:		Date:	
Project:		Working Area:	
Conditions			
1.	All Crew have undertaken the site preparation induction [RCMA-07-TM-FM-004v0]		
2.	Site preparation activities occur during daylight hours only		
3.	Areas to be cleared are clearly demarcated		
4.	Cleared Vegetation is stockpiled separately from topsoil and in windrows less than 2m high		
5.	Separately stockpiled topsoil is lightly compacted in windrows to a height of no more than 2m		
6.	Vehicles must be inspected and cleaned down (off site prior to mobilisation)		
7.	Sheeting materials are from the Pearson (ex-Grice) marl borrow pit only with all borrow pit topsoil excluded		
Clearing Undertaken (Sketch area or attach plan, describe vegetation impacted (m ²)):			
Cleared By:		Date:	
Supervisor:		Date:	
Project Manager:		Date:	

Appendix C Stakeholder Consultation Register

Stakeholder	Date	Type of Consultation	People Involved	Summary of Discussions	Outcomes of Consultation
DMIRS Environment	14/10/2019	Meeting	Ken Aitken (RCMA) Stan Bowes (DMIRS) Jacqui Middleton (DMIRS) Rohan Kok (DMIRS)	Cervantes 1 Proposal	MEL to Meet with EPA MEL to Appoint Environmental Professional MEL to prepare Env applications with DMIRS/EPA in parallel MEL to plan a cross functional planning meeting with all regulatory departments present in early November.
DMIRS Environment	16/10/2019	Email	Ken Aitken (RCMA) Stan Bowes (DMIRS) Jacqui Middleton (DMIRS) Rohan Kok (DMIRS) David Maher (Jade) Aveline Chan (RCMA) Chris Newport (RCMA)	Follow up to DMIRS Environment Meeting on Cervantes 1 Proposal	Documentation of Actions from Meeting: <ul style="list-style-type: none"> Meet with EPA within next 5-7 working days Appoint Environmental Professional before end of October Proceed preparing environmental applications with DMIRS/EPA in parallel on appointing environment professional Plan a cross functional planning meeting with all regulatory departments present in early November
DMIRS Environment	17/12/2019	Meeting	Ken Aitken (RCMA) Stan Bowes (DMIRS) Jacqui Middleton (DMIRS) Rohan Kok (DMIRS) Andrea Wills (RCMA)	Cervantes 1 Proposal Update <ul style="list-style-type: none"> Drilling surface location envelope identified Surveys underway Referral being drafted EP being compiled 	EP and OSCP to be submitted with referral end of January 2020
DMIRS Environment	20/02/2020	Meeting	Ken Aitken (RCMA) Stan Bowes (DMIRS) Jacqui Middleton (DMIRS) Rohan Kok (DMIRS) Andrea Wills (RCMA) Chris Newport (RCMA)	Cervantes 1 Proposal Update <ul style="list-style-type: none"> Cervantes 1 Referral Update EP and OSCP update, Metgasco have an office in West Perth 	Consensus for RCMA to submit EP and OSCP once supporting documentation has gone to DBCA
DMIRS Environment	24/07/2020	Online Database Email	EARS Andrea Wills (RCMA)	Submission of the Cervantes 1 Conventional Oil Exploration Well Environment Plan, Environment Plan Summary and Oil Spill Contingency Plan.	Application Summary received by email via adam@refinegroup.com.au
DMIRS Environment	19/08/2020	Email Phone	Laura Burns (DMIRS) Andrea Wills (RCMA)	DMIRS Request for further information on the Cervantes 1 Conventional Oil Exploration Well Environment Plan and Oil Spill Contingency Plan.	A phone discussion on rehabilitation was had on the 09/09/2020 to clarify the corresponding actions.
DMIRS Environment	24/09/2020	Phone	Laura Burns (DMIRS) Andrea Wills (RCMA)	RCMA queries on two of DMIRS requests for information <ul style="list-style-type: none"> Queries in regard to fauna management were relevant to a new marl pit. It wasn't clear in the EP that the marl pit was existing. This should be stated more clearly in the EP. The requirement for moderate is on the RCMA matrix and not on the sample DMIRS matrix despite the overly conservative RCMA matrix. 	DMIRS satisfied for RCMA to resubmit EP late October with Flora survey results only as long as heritage commitments have been included.
DMIRS Environment	19/10/2020	Phone	Stan Bowes (DMIRS) Andrea Wills (RCMA)	RCMA called DMIRS to ask for a contact in the Resources Safety Branch. DMIRS referred RCMA to Bruce Franz. RCMA gave DMIRS an update on the progress of the Cervantes 1 project.	RCMA to contact Bruce Franz
DMIRS Environment	20/10/2020	Phone	Laura Burns (DMIRS) Andrea Wills (RCMA)	RCMA gave DMIRS an update on the status of the Spring Survey and proposed resubmission of the EP and OSCP.	RCMA to resubmit EP and OSCP end of October
DMIRS Environment	28/10/2020	Phone	Laura Burns (DMIRS) Andrea Wills (RCMA)	RCMA has resubmitted the OSCP (22/10/2020) and EP (26/10/2020) however the contact directory, which has not been amended since the last submission was not uploaded with the OSCP. DMIRS advised to email the contact directory through. RCMA asked about the 15A referral which DMIRS advised would not be sent until RCMA put in their Titles Compliance Branch Application.	RCMA to email contact directory to DMIRS and follow up Titles Compliance Branch Application within RCMA.

Stakeholder	Date	Type of Consultation	People Involved	Summary of Discussions	Outcomes of Consultation
DMIRS Environment	10/11/2020 & 11/11/2020	Phone and email	Andrea Wills (RCMA) Laura Burns (DMIRS)	RCMA enquired whether Laura Burns could follow up with Petroleum Titles in regard to the Section 15A process as Titles had provided some confusing advice which indicated that it is the Environment Division who undertake this Referral.	DMIRS Followed up with Titles and advised by phone call on 11/11/2020 that the Resource Tenure Branch will be responsible for progressing any required section 15A referrals. This was followed up with an email with the Resource Tenure Branch contact.
DMIRS Environment	16/11/2020	Email & Phone	Laura Burns (DMIRS) Andrea Wills (RCMA)	DMIRS requested additional modifications on Rev 2 of the Environment Plan. RCMA contacted DMIRS by phone 17/11/2020 to discuss each request individually. Each item was discussed and consensus on how the item was to be addressed was achieved.	RCMA to modify the EP to address each item raised.
DMIRS Environment	18/11/2020	Phone	Laura Burns (DMIRS) Andrea Wills (RCMA)	DMIRS contacted RCMA to advise that a clearing permit would be required if the EPA did not assess the Cervantes 1 proposal. RCMA advised DMIRS that the clearing was exempt under Regulation 5 item 24 of the Clearing of Native Vegetation Regulations. DMIRS advised that Cervantes is in a Schedule 1 area, so it was not exempt. RCMA advised that Item 24 was clearing for Petroleum Exploration and not low impact petroleum activities which Schedule 1 applied to.	DMIRS were not aware of this provision and were going to follow up.
DMIRS Environment	18/11/2020	Email	Andrea Wills (RCMA) Laura Burns (DMIRS)	RCMA forwarded a copy of the Hygiene Management Plan and the Marl Assessment Report to DMIRS in response to query 18 sent through 16/11/2020.	DMIRS acknowledged receipt of the reports.
DMIRS Environment	15/12/2020	Phone	Andrea Wills (RCMA) Laura Burns (DMIRS)	RCMA enquired whether DMIRS received Rev 3 of the Cervantes 1 EP. DMIRS has received EP and will be assessing it either before or after the Christmas break. However, the EP will not be approved until the EPA decision and 15A processes are complete. DMIRS enquired whether there were any updates from EPA or DBCA. RCMA advised that EPA had received advice from DBCA and were now seeking advice from DMIRS on how they will manage the regulation of clearing associated with the proposal given that it is exempt from the requirements of a clearing permit. RCMA advised that DBCA had requested further information on bushfire management which RCMA had promptly provided. There was discussion on whether additional communications with DBCA were required.	DMIRS to call EPA to find out details of their request for advice. DMIRS will be in contact before the break to relay progress of assessment.
DMIRS Environment	22/12/2020	Email	Laura Burns (DMIRS) Andrea Wills (RCMA)	DMIRS provided queries on Rev 3 of the Cervantes 1 EP. Queries relate to Well Testing, Rehabilitation (including consultation with DBCA) and Reporting of Incidents.	RCMA are invited to contact DMIRS if they have any questions.
DMIRS Environment	5/01/2021	Phone	Andrea Wills (RCMA) Laura Burns (DMIRS)	Discussion and clarification on DMIRS queries provided on Rev 3 of the Cervantes 1 EP.	RCMA to consult DBCA on a revised Rehabilitation Plan with firm completion criteria. RCMA to then resubmit revised Cervantes 1 EP.
DMIRS Environment	21/01/2021	Phone	Andrea Wills (RCMA) Laura Burns (DMIRS)	Update on status of consultation with DBCA, heritage survey and EPA decision	RCMA to continue consulting with DBCA on Well Testing and Rehabilitation. RCMA to notify DMIRS of EPA decision.
DMIRS Environment	04/02/2021	Email	Andrea Wills (RCMA) Laura Burns (DMIRS)	RCMA forwarded excerpt from updated EP and a copy of the revised Rehabilitation Plan sent to DBCA for review and endorsement.	RCMA seek DMIRS feedback on the rehabilitation content provided.
DMIRS Environment	11/02/2021	Phone	Laura Burns (DMIRS) Andrea Wills (RCMA)	DMIRS responding to RCMA's request for feedback on the rehabilitation content proposed for the upcoming revision of the EP. In summary, DMIRS will be satisfied with the objectives and completion criteria when DBCA has endorsed them. The rest of the content is there with the exception of monitoring which RCMA explained is in the later section of the EP identical to the content provided in the Rehabilitation Plan. DMIRS noted that they had discussed their concerns with some of the current completion criteria with DBCA (eg. weeds not significantly greater than surrounding areas).	RCMA to continue consultation with DBCA prior to resubmitting EP once Rehabilitation Plan is endorsed.
DMIRS Environment	12/02/2021	Phone	Andrea Wills (RCMA) Laura Burns (DMIRS)	RCMA notifying DMIRS that RCMA would be committing to a rehabilitation bond in the Cervantes 1 Environment Plan. It would be	

Stakeholder	Date	Type of Consultation	People Involved	Summary of Discussions	Outcomes of Consultation
				for the amount of \$100,000 in place until the achievement of completion criteria.	
DMIRS Environment	30/04/2021	Phone	Andrea Wills (RCMA) Laura Burns (DMIRS)	RCMA notifying DMIRS that the Rehabilitation Plan has been finalised and sent to the EPA. DMIRS advised that RCMA should hold off resubmitting the EP until the conditions of the EPA assessment can be included in the EP.	RCMA to hold off submitting EP until it has been updated with EPA Ministerial Statement conditions.
DMIRS Environment	17/08/2021	Phone	Andrea Wills (RCMA) Laura Burns (DMIRS)	RCMA notification to DMIRS that the EP was ready to be resubmitted and provision of an update on the process with the Appeals Convenor.	EP and EP Summary Rev 4 uploaded to EARS 18/08/2021. Management Plans were emailed to DMIRS 18/08/2021. The email included an update on the meeting held with the Appeals Convenor earlier that day.
DMIRS Environment	09/11/2021	Phone	Andrea Wills (RCMA) Laura Burns (DMIRS)	RCMA update DMIRS on progress of EPA process and enquiry on revision of EP to include choice of supplier for cementing chemicals (either Schlumberger or Halliburton) as it depends if we get the rig after Strike or after Mitsui to which supplier will be used.	RCMA to update chemical disclosure as well as timing and rig details in EP.
DMIRS Environment	18/11/2021	Phone	Andrea Wills (RCMA) Laura Burns (DMIRS)	Discussion on Jingemia Production Facility audit. RCMA update on EPA process.	
DMIRS Environment	02/12/2021	Phone	Laura Burns (DMIRS) Andrea Wills (RCMA)	DMIRS plan to accept the Cervantes 1 EP Rev 5 however require RCMA to submit an email commitment to capping all drill pipe not in use. DMIRS followed this call with an email request.	RCMA responded 02/12/2021 with the commitment to cap all drill pipe not in use. The EP and FMP were updated and corresponding pages forwarded to DMIRS 03/12/2021.
DMIRS Environment	14/12/2021	Email	Andrea Wills (RCMA) Laura Burns (DMIRS)	A copy of the Ministerial Statement was forwarded to DMIRS.	RCMA forwarded the final environmental approval to DMIRS 15/12/2021.
DMIRS Environment	17/12/2021	Phone	Andrea Wills (RCMA) Laura Burns (DMIRS)	RCMA inquiry into status of Section 15A referral. RCMA advised DMIRS of the issue with EPA not reviewing the Management Plans and that these were waiting with DBCA.	DMIRS to follow up with Titles Branch on whether they have received signoff from Minister. DMIRS responded by phone to advise RCMA that the Section 15A referral signoff had not been received by Titles Branch.
DMIRS Environment	04/01/2022	Phone	Andrea Wills (RCMA) Laura Burns (DMIRS)	RCMA inquiry as to period of surveillance monitoring prior to drilling activities. DMIRS advised that as long as surveillance monitoring was undertaken before drilling it was acceptable. RCMA updated DMIRS on Management Plans (DBCA have until 19 th January to review) and Section 15A referral (will most likely wait until EPA has finished their process).	
DMIRS Environment, Safety and Titles	18/01/2022	Meeting	Ken Aitken (DMIRS) Laura Burns (DMIRS) Rohan Kok (DMIRS) Hassan Fatahi (DMIRS) Bruce Franz (DMIRS) Maggie Fleming (DMIRS) Mark Jenkins (Aztech) Carlo Cottino (Aztech)	Meeting held with DMIRS personnel to provide: <ul style="list-style-type: none"> • Cervantes Project Overview • HSE approvals status • Current Project Schedule • AOB Questions 	
DMIRS Safety	20/10/2020	Email	Bruce Franz (DMIRS) Andrea Wills (RCMA)	RCMA contacted DMIRS as part of their safety planning engagement for the Cervantes 1 project. Bruce directed RCMA to their case manager Kevin Clary.	Kevin Clary will get in contact with RCMA.
DMIRS Safety	26/10/2020	Phone	Kevin Clary (DMIRS) Andrea Wills (RCMA)	Discussion in regard to safety approvals for RCMA's Cervantes 1 proposal. RCMA advised that under Regulation 32 of the <i>Petroleum and Geothermal Energy Resources (Management of Safety) Regulations 2010</i> a bridging document to the Jingemia Production Facility Safety Management System is required.	Kevin Clary provided his contact details for RCMA to get in touch when required.
DMIRS Safety	30/11/2020	Phone	Kevin Clary (DMIRS) Andrea Wills (RCMA)	Discussion about the Civils safety management plan in relation to the Refine Bridging Document. Kevin most comfortable with the Refine BD only.	Chris Newport to resubmit the Refine BD to the Director of Petroleum Safety.
DMIRS Safety	28/05/2021	Phone	Andrea Wills (RCMA) Kevin Clary (DMIRS)	RCMA notified DMIRS that they would no longer be utilising the Refine Rig to drill the Cervantes 1 well and clarified the requirements for their submission. DMIRS requested the contact details for RCMA contacts be sent through.	RCMA followed call up with an email outlining new RCMA contacts since the Refine Rig will no longer be utilised and notification that a new submission will be provided.

Stakeholder	Date	Type of Consultation	People Involved	Summary of Discussions	Outcomes of Consultation
DMIRS Safety	18/07/2021	Email	Andrea Wills (RCMA) Kevin Clary (DMIRS)	RCMA submitted Civils Safety Management Plan and revoked Refine Drilling Safety Bridging Document	DMIRS acknowledged receipt of document 19/07/2021. DMIRS raised anomalies to correct in submission letter (reference to regulation, signatory) on 20/07/2021 and requested resubmission of document with revised cover letter 21/07/2021./
DMIRS Safety	22/07/2021	Email	Andrea Wills (RCMA) Kevin Clary (DMIRS)	RCMA submitted the Civils Safety Management Plan and revoked Refine Drilling Safety Bridging Document with a revised cover letter	DMIRS sent through an approval letter for the Civils SMP 10/08/2021. DMIRS provided some feedback on the Civils SMP and some guidance for the development of our Drilling SMP on 11/08/2021.
DMIRS Safety	16/12/2021	Phone	Andrea Wills (RCMA) Kevin Clary (DMIRS)	RCMA updated DMIRS on progress of Cervantes 1 proposal. RCMA let DMIRS know that the Drilling Safety Bridging Document was about to be submitted and the contact would be Mark Jenkins and to expect that submission from him shortly.	
DMIRS Safety	16/12/2021	Phone	Mark Jenkins (Aztech) Kevin Clary (DMIRS)	Submission of Drilling Safety Bridging Document	RCMA received approval for the document 23/12/2021.
DMIRS Safety	18/01/2022	Email	Kevin Clary (DMIRS) Andrea Wills (RCMA)	DMIRS request for RCMA contacts	RCMA sent list of contacts 19/01/2022
DMIRS Titles	09/11/2020	Email	Allison Cohen (DMIRS) Andrea Wills (RCMA)	DMIRS responded to RCMA's query on the Section 15A timeframe now that Cervantes 1 had been registered in PGR. The response was not clear referring RCMA to the Environment Branch and RCMA followed up the Environment Branch. DMIRS advised that the Authority to Act was not adequate before realising that their definition of a deviated well did not include wells deviated within the same permit. RCMA were to withdraw their registration and reapply as a non-deviated well.	RCMA emailed DMIRS to withdraw deviated well application. RCMA reapplied for non-deviated well.
DMIRS Titles	18/11/2020	Email	Sandip Patel (DMIRS) Mark Jenkins (RCMA)	DMIRS request for a brief technical summary of the Cervantes 1 well for the DBCA referral as the well application was not submitted with a WMP. Technical summary to include: <ul style="list-style-type: none"> • Exploration or Appraisal well? • Deviated? Maximum inclination? • Objectives (primary/secondary target) • Number of sections to be drilled (surface, intermediate, production) and section depth • Duration of the well operations • Purpose and status of the well at end of drilling 	Mark Jenkins submitted a Well Summary by email 20/11/2020.
DMIRS Titles	02/02/2021	Email	Andrea Wills (RCMA) Megan Harrison (DMIRS) Sandip Patel (DMIRS)	RCMA contacted DMIRS with issues uploading the Cervantes 1 Well Management Plan. Sandip loaded the WMP onto the PGR System but noted that the application would remain on hold until the insurance information is provided.	
DMIRS Titles	02/02/2021	Email	Paul O'Shea (RCMA) Sandip Patel (DMIRS)	RCMA inquired as to whether the WMP assessment could proceed in the absence of insurance details. DMIRS advised that if the application does not contain all information it is put on hold.	
DMIRS Titles	03/12/2021	Email	Andrea Wills (RCMA) Sandip Patel (DMIRS) Ikae Brown (DMIRS) Sunil Varma (DMIRS) Walter Law (DMIRS)	RCMA submission of amended Well Management Plan.	DMIRS responded with acknowledgement and confirmation of loading document into PGR.
DMIRS Titles	24/12/2021	Email	Sandip Patel (DMIRS) Andrea Wills (RCMA) Sunil Varma (DMIRS) Walter Law (DMIRS) Hassan Fatahi (DMIRS) Maggie Flemming (DMIRS)	DMIRS request for further information on the Cervantes 1 Well Management Plan.	RCMA acknowledged the request 24/12/2021.
EPA	23/10/2019	Email	Helen Butterworth (EPA) Chris Newport (RCMA)	Confirmation of meeting on 28/10/2019	Request to complete "1.1 Pre-Referral EPA Factors Objectives Table" prior to meeting
EPA	28/10/2019	Meeting	Helen Butterworth (EPA)	Briefing on proponents and Cervantes 1 Proposal	MEL to conduct flora and vegetation survey

Stakeholder	Date	Type of Consultation	People Involved	Summary of Discussions	Outcomes of Consultation
			Robert Hughes (EPA) Chris Newport (RCMA) Ken Aitken (RCMA)		MEL to refer proposal
EPA	16/12/2019	Email	Helen Butterworth (EPA) Ken Aitken (RCMA)	Request for an update meeting	Meeting organised for the 23/12/2019 and the Pre-referral EPA Factors Objectives Table submitted to EPA 18/12/2019
EPA	23/12/2019	Meeting	Helen Butterworth (EPA) Robert Hughes (EPA) Ken Aitken (RCMA) Andrea Wills (RCMA)	MEL updated EPA on Cervantes 1 Proposal progress.	Outcomes included: <ul style="list-style-type: none"> Robert offered to provide names / links of relevant offset policies possibly relevant to track clearing EPA also suggested repeated reference to “conventional” and “this proposal is not fraccing” in the referral documentation EPA suggested that the Woodman report be submitted for EPA technical review ahead of a January meeting pre-referral submission to ensure the submission was acceptable on first submission
EPA	10/02/2020	Email	Helen Butterworth (EPA) Andrea Wills (RCMA)	Submission of Desktop Flora Fauna Report	Confirmation of receipt email.
EPA	13/02/2020	Phone Email	Helen Butterworth (EPA) Andrea Wills (RCMA)	Advice from EPA on adequacy of Desktop Flora Fauna Report for referral submission	EPA advise MEL to conduct their on ground surveys in accordance with EPA guidance and submit to EPA for technical assessment prior to submission of the Cervantes 1 Referral
EPA	03/04/2020	Email	Helen Butterworth (EPA) Andrea Wills (RCMA)	Submission of Field Flora Fauna Report	Confirmation of receipt email.
EPA	30/04/2020	Phone and Email	Skye Tuffin (EPA) Andrea Wills (RCMA)	Submission of memo clarifying areas of impact	Confirmation of receipt email.
EPA	15/05/2020	Phone and Email	Skye Tuffin (EPA) Andrea Wills (RCMA)	Letter from Robert Hughes (EPA) in response to submission of field Flora and Fauna report.	RCMA to prepare a response and organise a meeting
EPA	26/05/2020	Phone	Skye Tuffin (EPA) Andrea Wills (RCMA)	Request for a meeting to discuss EPA feedback on RCMA field Flora and Fauna report as there appears to be a misinterpretation of the vegetation part of the report for example the feedback states that community and condition mapping is required however there is community and condition mapping in Appendix K and N. The feedback also reports a significant reliance on the Denison data and requirements for surveying above and beyond the requirements of the EPA Guideline. The fauna specialist is working to respond to all concerns raised with no major issues on the feedback.	ST agreed to organise a “Microsoft TEAMS” meeting with the relevant EPA personnel. AW to email a list of RCMA attendees
EPA	03/06/2020	Meeting	Skye Tuffin (EPA) Helen Butterworth (EPA) Kelly Freeman (DWER) Ken Aitken (RCMA) Andrea Wills (RCMA) Greg Woodman (WEC)	Meeting to discuss flora and vegetation aspects of EPA feedback on RCMA Flora and Fauna report. Apologies submitted by Wendy Hudleston (DWER) who was the DWER/EPA person who had reviewed the report. Without Wendy at the meeting it was difficult to have any meaningful discussion about the issues raised in her review namely the requirement for detailed survey, the requirement for Spring survey and the reliance on Denison data.	Group resolved that RCMA would forward their three main questions on the feedback and a second meeting with Wendy in attendance would be organised once she had reviewed the questions.
EPA	09/06/2020	Phone Message & Email	Skye Tuffin (EPA) Andrea Wills (RCMA)	Enquiry into status of second meeting	Advice that there will be no meeting before 15/06/2020
EPA	10/06/2020	Phone	Helen Butterworth (EPA) Ken Aitken (RCMA)	Delay in meeting timing	Follow up email from HB advising that Kelly Freeman and Wendy Hudleston are reviewing and drafting a response to RCMA’s three questions provided immediately following the first meeting. Once they have a response the EPA will contact RCMA to discuss
EPA	17/06/2020	Phone & Email	Skye Tuffin (EPA) Andrea Wills (RCMA)	Advice from EPA that a Spring survey is required to confirm the findings of the February survey	RCMA responded with proposed scope of Spring survey
EPA	23/06/2020	Email & Phone	Robert Hughes (EPA) Andrea Wills (RCMA)	Request for meeting to discuss scope of Spring survey	
EPA	24/06/2020	Meeting	Robert Hughes (EPA) Helen Butterworth (EPA)	Discussion on level of survey required to confirm the findings of the February survey	RCMA to liaise with Greg Woodman on another scope and present to EPA

Stakeholder	Date	Type of Consultation	People Involved	Summary of Discussions	Outcomes of Consultation
			Skye Tuffin (EPA) Andrea Wills (RCMA) Ken Aitken (RCMA)		
EPA	29/06/2020	Email & Phone	Andrea Wills (RCMA) Skye Tuffin (EPA)	RCMA provided scope for Spring survey	EPA phoned and provided email affirming that the scope was endorsed by EPA
EPA	09/07/2020	Email	Andrea Wills (RCMA) Jaren Hart (DWER)	RCMA submitted formal referral of Cervantes 1 Project	Acknowledgement email receipt of the Cervantes Conventional Oil Exploration Well Project referral Case Management System (CMS) number of CMS17821.
EPA	01/09/2020	Letter via email	Anthony Sutton (EPA) Skye Tuffin (DWER) Andrea Wills (RCMA) Chris Newport (RCMA)	Request for further information in regard to Cervantes 1 Conventional Well Drilling Proposal: <ul style="list-style-type: none"> Requirement for Spring Survey Details of Fauna observed during February 2020 on-ground survey Scale bars on two flora/vegetation figures in the April Field Report 	
EPA	22/10/2020	Phone	Skye Tuffin (EPA) Andrea Wills (RCMA)	RCMA query on whether EPA expect a resubmission of the Referral, submission of an addendum to the Referral or an explanatory cover letter in response to their request for further information. EPA advised that a cover letter only is required.	Further information including Spring Survey was submitted by RCMA on 22/10/2020.
EPA	28/10/2020	Phone	Andrea Wills (RCMA) Skye Tuffin (EPA)	RCMA enquired whether EPA had received RCMA's 22/10/2020 submission as no receipt response had been received from the EPA Registrar. EPA were having a meeting on this proposal 29/10/2020 and the proposal will then be advertised. EPA were not sure on the period it would take them to make a decision on whether to assess the proposal.	EPA will notify RCMA when the proposal is placed on the EPA website.
EPA	10/11/2020	Phone	Andrea Wills (RCMA) Skye Tuffin (EPA)	RCMA enquiry as to when Cervantes 1 activity will be advertised on the EPA website. EPA advised that advice was being sought from the DBCA. Current progress on that was that the advice was with the Director for sign off. EPA are continuing with review of documents in parallel with this process.	EPA assurance that process is progressing and outcomes were not being delayed.
EPA	20/11/2020	Phone	Andrea Wills (RCMA) Skye Tuffin (EPA)	EPA are still waiting on advice from DBCA which is due back 01/12/2020. EPA then have 28 days to make their decision which they should not need that long. Helen Butterworth will be the new contact as of 23/11/2020. Skye is being seconded into the waste division of DWER.	
EPA	23/11/2020	Email	Andrea Wills (RCMA) Helen Butterworth (EPA) Robert Hughes (EPA) Skye Tuffin (EPA)	RCMA advice of IBSA data package numbers: <ul style="list-style-type: none"> IBSA-2020-0468 IBSA-2020-0469 	Confirmation of receipt was received from Helen Butterworth 23/11/2020.
EPA	02/12/2020	Phone	Andrea Wills (RCMA) Helen Butterworth (EPA)	RCMA enquiry as to status of Cervantes 1 Proposal. EPA advised that DBCA comments have been received and the period for public comment ends 03/12/2020. Once EPA have received those comments, they will write up their decision for assessment for the Minister. EPA do not see the number of comments until the comment period is finished.	Helen will notify RCMA when there is any progress.
EPA	15/12/2020	Phone	Andrea Wills (RCMA) Helen Butterworth (EPA)	RCMA inquired as to number of submissions from the public on the Cervantes 1 proposal. EPA informed RCMA that there were a lot of submissions, in the order of 150. EPA advised that they had received advice from DBCA and now they had reached out to DMIRS for an outline on how they propose to regulate the clearing of native vegetation element of the project given that it is exempt from a clearing permit. EPA want to ensure that there are no appeals on their decision "not to assess".	EPA are to commence working through submissions.

Stakeholder	Date	Type of Consultation	People Involved	Summary of Discussions	Outcomes of Consultation
EPA	08/01/2021	Phone	Andrea Wills (RCMA) Helen Butterworth (EPA)	RCMA inquired as to progress of Cervantes 1 referral. EPA have not received a response from DMIRS but are expecting one by 15/01/2021.	EPA to provide decision on level assessment once they receive DMIRS advice.
EPA	19/01/2021	Phone	Andrea Wills (RCMA) Helen Butterworth (EPA)	RCMA inquired as to the nature of the submissions received by the EPA on the Cervantes 1 project. EPA informed RCMA that all submissions were regarding the activity being in the Nature Reserve and that there were objections to “mining” type activities with the potential for large scale developments to be in areas preserved for the conservation of flora and fauna. EPA mentioned that they had received the advice they were waiting for from DMIRS and would be having a meeting with the EPA Chairman later this week.	EPA to meet with Chairman this week to discuss level of assessment for Cervantes 1 Project.
EPA	22/01/2021	Phone	Ken Aitken (RCMA) Helen Butterworth (EPA)	Discussion in regard to EPA’s board meeting where the level of assessment for the Cervantes 1 project was discussed following RCMA leaving a message for Robert Hughes to call RCMA. EPA mentioned that the EPA might assess the project to enable a rehabilitation performance bond to be placed on the project. EPA inquired as to the heritage status of the project and RCMA updated EPA on the recent survey results. EPA advised that they could provide a summary of the public submissions which had been made on RCMA’s enquiry.	EPA to notify RCMA of assessment decision beginning of February.
EPA	25/01/2021	Phone	Ken Aitken (RCMA) Robert Hughes (EPA)	Robert Hughes returning RCMA’s call. EPA let RCMA know that a number of options had been presented to the board at the meeting for consideration. EPA let RCMA know that the redacted submission letters could all be provided to RCMA for review.	EPA to contact RCMA if they require any further information.
EPA	01/02/2021	Phone	Ken Aitken (RCMA) Helen Butterworth (EPA) Robert Hughes (EPA)	RCMA called EPA in regard to their proposal to voluntarily put up a Rehabilitation Bond. EPA sort advice from Robert Hughes (EPA) who had questions on whether the bond would be enforceable under the DMIRS Environment Plan.	RCMA to provide a letter to EPA advising them of their intent to put in place a rehabilitation bond. Upon receipt of the letter EPA requested that it be readdressed to the Chair or the Executive Director as they are delegates under the Act.
EPA	02/02/2021	Letter	Ken Aitken (RCMA) Registrar (DWER) Helen Butterworth (EPA) Robert Hughes (EPA) Andrea Wills (RCMA)	RCMA’s letter to the EPA advising them of their intent to put in place a rehabilitation bond.	
EPA	03/02/2021	Email	Helen Butterworth (EPA) Andrea Wills (RCMA)	EPA requested further information on Heritage aspect of the Cervantes 1 project.	RCMA responded with details of the Heritage Survey Agreement, January Heritage Survey and Heritage commitments noting that the official Heritage Survey Report is expected 12/02/2021. EPA acknowledged receipt of information.
EPA	10/02/2021	Phone	Andrea Wills (RCMA) Helen Butterworth (EPA)	RCMA called EPA for an update on decision to assess timeline. EPA advised that the Chairman was reviewing the recommendation memo this afternoon and making a decision today. The decision will be advertised on Monday 15/02/2021.	EPA will find out if EPA is allowed to call RCMA to disclose decision earlier. RCMA may expect a call Thursday or Friday.
EPA	12/02/2021	Email/Letter & Phone	Helen Butterworth (EPA) Andrea Wills (RCMA)	Email advice that EPA will assess the Cervantes 1 project on referral information. RCMA inquired whether EPA would like a copy of the Rehabilitation Plan for assessment	RCMA sent the Rev 0 of the Rehabilitation Plan (version sent to DBCA) to EPA with comment that the DBCA approved version would be sent once endorsed.
EPA	15/02/2021	Phone	Andrea Wills (RCMA) Helen Butterworth (EPA)	RCMA enquired whether they should send a memo to EPA outlining any management strategies that have been added since the time of the referral. EPA agreed and added that clarification of cleared areas is needed in the memo.	RCMA agreed to prepare a memo. Letter memo was sent to Matthew Tontsd (EPA) 16/02/2021 clarifying information regarding the Cervantes Project: <ul style="list-style-type: none"> • Area of Impact • Management Measures • Heritage • Consultation

Stakeholder	Date	Type of Consultation	People Involved	Summary of Discussions	Outcomes of Consultation
EPA	15/02/2021	Phone	Robert Hughes (EPA) Ken Aitken (RCMA)	EPA rang RCMA to discuss the decision to assess the Cervantes project. Items to note included: <ul style="list-style-type: none"> The EPA had noted that RCMA had offered a Rehab Bond but EPA were still concerned that DMIRS would be unable to legally enforce the JV in regard to that bond whereas EPA have this authority. DBCA formally wrote to EPA requesting that the proposal be formally assessed There is significant public interest in the Cervantes Project as it is in Nature Reserve and in the context of increased oil and gas activity in the Northern Perth Basin 	
EPA	19/02/2021	Phone & Email	Helen Butterworth (EPA) Andrea Wills (RCMA)	EPA notified RCMA that if they wanted to reduce the size of the area of impact for their proposal they would need to put an application for change of proposal under s43A of the EP Act 1986. EPA provided the Procedures Manual for Reference. RCMA discussed the option of leaving the impact area as 5.5ha even though there is no intent to impact more than 4.5ha. As the difference in areas is the initial 12m track reduction to 9m track it is easy to remain within the 4.5ha proposal. EPA advised that this could be done, and EPA would place a 1 ha limit on the clearing of W1 vegetation (PEC) in line with the 4.5 ha proposal.	RCMA advised by email that they would not change their proposal as discussed by phone but will impact no more than 4.5 ha native vegetation (including no more than 1 ha of W1 PEC). EPA acknowledged this and noted that they will continue to assess the proposal and write the draft report. The next milestone being taking the draft report to the EPA meeting. EPA will advise the date and time of the EPA meeting.
EPA	23/02/2021	Email	Aidan Walsh (EPA) Andrea Wills (RCMA)	EPA requested polygon .shp files as the previous files provided were line files. RCMA provided the .shp files on 09/03/2021. EPA raised issues with the .shp files on 10/03/2021 where part of a polygon was out side of the original submitted development envelope. EPA provided a map on 15/03/2021 illustrating that the alternative access track was a line file and not a polygon. RCMA provided an updated .shp file and EPA provided an updated map. RCMA updated the .shp file due to vegetation coverage issues on 15/03/2021 and EPA provided an updated map on 16/03/2021. The email contained the footprint however double counted the two access tracks when the tracks are options (either or).	EPA responded by phone and follow up email that RCMA could apply for a S43a change to remove the alternative track otherwise it would remain in the total footprint. RCMA confirmed that they did not wish to apply for a S43a change.
EPA	04/03/2021	Phone	Aidan Walsh (EPA) Andrea Wills (RCMA)	EPA discussion on contemporary survey of W1 vegetation in the Beekeepers Nature Reserve	RCMA sent the GEMEC report to EPA 05/03/2021
EPA	04/03/2021	Phone	Aidan Walsh (EPA) Andrea Wills (RCMA)	EPA request for emissions associated with the Cervantes 1 Project including sited preparation and rehabilitation	RCMA responded with an email of 800 t CO ₂ -e 04/03/2021
EPA	05/03/2021	Phone	Aidan Walsh (EPA) Andrea Wills (RCMA)	EPA request for hydrogeological study associated with the Cervantes 1 Project	RCMA sent the GEMEC report to EPA 05/03/2021
EPA	31/03/2021	Phone	Aidan Walsh (EPA) Andrea Wills (RCMA)	Discussion on progress of Cervantes 1 assessment.	
EPA	01/04/2021 received 06/04/2021	Letter	Anthony Sutton (EPA) Andrea Wills (RCMA)	EPA's letter to proponent in regard to the Cervantes 1 bond and proposed contingency offsets containing comments from DBCA.	RCMA to provide comments by the 08/04/2021
EPA	12/04/2021	Meeting	Robert Hughes (EPA) Helen Butterworth (EPA) Aidan Walsh (EPA) Ken Aitken (RCMA) Andrea Wills (RCMA)	Meeting to discuss letter to proponent (EPA and DBCA feedback on Cervantes 1 bond conversation).	EPA to send RCMA the DBCA decommissioning and rehabilitation breakdown and offset checklist. EPA sent this following the meeting. RCMA to respond to letter to proponent. RCMA sent an acknowledgement email after the meeting to confirm that they would send their response by the 20/04/2021.
EPA	19/04/2021	Phone	Aidan Walsh (EPA) Andrea Wills (RCMA)	RCMA rang to enquire about what form the financial security would take in practicality	EPA advised by phone on 20/04/2021 that the financial security would be in the form of a bank deposit held by the DWER Compliance Branch.
EPA	20/04/2021	Letter	Anthony Sutton (EPA) Ken Aitken (RCMA) Helen Butterworth (EPA)	RCMA's response to the letter received from EPA on 06/04/2021 addressing questions on bonds and proposed contingency offsets related to the Cervantes 1 project.	

Stakeholder	Date	Type of Consultation	People Involved	Summary of Discussions	Outcomes of Consultation
			Aidan Walsh (EPA) Robert Hughes (EPA) Andrea Wills (RCMA)		
EPA	23/04/2021	Phone	Aidan Walsh (EPA) Andrea Wills (RCMA)	EPA enquiry as to timing of submission of Rehabilitation Plan.	RCMA are waiting on one figure and will have it to EPA and DBCA early next week.
EPA	28/04/2021	Phone	Aidan Walsh (EPA) Andrea Wills (RCMA)	EPA enquiry as to whether they can have a figure of the vegetation mapping over the project area.	RCMA promised to modify the monitoring transect figure and provide once available.
EPA	29/04/2021	Phone	Aidan Walsh (EPA) Andrea Wills (RCMA)	EPA enquired on progress of Rehabilitation Plan and requested the .shp files for the vegetation mapping.	RCMA let EPA know that the Rehabilitation Plan was being compiled for sending and that the .shp files would be sent in an email directly following the Rehabilitation Plan. Both submissions were made by email.
EPA	30/04/2021	Phone	Andrea Wills (RCMA) Aidan Walsh (EPA)	RCMA checked with EPA that RCMA's submission of the Rehabilitation Plan met with DBCA's response "It is understood that the plan will be submitted to the Department of Water and Environmental Regulation (DWER) for review and approval; DBCA will provide any further comment on the plan to DWER if required to inform their review." on submission of their revised Rehabilitation Plan.	EPA advised that EPA were the agency at DWER and that they would follow up with DBCA.
EPA	11/05/2021	Email	Andrea Wills (RCMA) Aidan Walsh (EPA)	RCMA provided EPA with research on PEC.	
EPA	31/05/2021	Phone	Aidan Walsh (EPA) Andrea Wills (RCMA)	EPA called to advise that conditions consultation letter was being signed off today and would be sent through today.	
EPA	02/06/2021	Letter	Anthony Sutton (EPA) Ken Aitken (RCMA) Aidan Walsh (EPA) Andrea Wills (RCMA)	Conditions consult letter sent through with Draft Ministerial Statement.	RCMA confirmed receipt of letter and arranged a meeting with EPA to discuss the conditions in the Ministerial Statement.
EPA	03/06/2021	Meeting	Robert Hughes (EPA) Aidan Walsh (EPA) Andrea Wills (RCMA) Ken Aitken (RCMA)	Meeting was held with EPA to discuss the conditions on the Ministerial Statement.	RCMA submitted comments on the Ministerial Statement following the meeting.
EPA	09/06/2021	Phone	Aidan Walsh (EPA) Andrea Wills (RCMA)	EPA called to advise DBCA had no issues with the Rehabilitation Plan and that RCMA were to submit the revised version addressing the conditions of the draft Ministerial Statement now.	RCMA submitted the Rehabilitation Plan to EPA as well as a track changes version 09/06/2021.
EPA	18/06/2021	Email	Andrea Wills (RCMA) Aidan Walsh (EPA)	RCMA enquired what email address they should place in documents in case a non-compliance requires reporting	EPA responded 18/06/2021 that compliance@dwer.wa.gov.au should be included in the documents.
EPA	22/06/2021	Phone	Andrea Wills (RCMA) Aidan Walsh (EPA)	EPA updated RCMA on progress of Cervantes 1 proposal; the Ministerial Statement is with Anthony Sutton and will be released next week.	
EPA	01/07/2021	Email	Andrea Wills (RCMA) Aidan Walsh (EPA)	RCMA submission of Compliance Assessment Plan and inquiry into Cervantes 1 proposal progress. EPA should have had the report on their website but are having difficulties. The CAP should be sent to compliance@dwer.wa.gov.au but advise sending after the Ministerial Statement is published EPA also advised that the Management Plans go to the EPA at registrar@dwer.wa.gov.au	
EPA	02/07/2021	Email	Robert Hughes (EPA) Ken Aitken (RCMA) Aidan Walsh (EPA) Andrea Wills (RCMA)	EPA advice that the Cervantes 1 report is now published on the EPA website	
EPA	18/07/2021	Email	Andrea Wills (RCMA) registrar@dwer.wa.gov.au Aidan Walsh (EPA) Ken Aitken (RCMA)	Submission of Management Plans: <ul style="list-style-type: none"> Vegetation Management Plan Hygiene Management Plan Fauna Management Plan 	

Stakeholder	Date	Type of Consultation	People Involved	Summary of Discussions	Outcomes of Consultation
EPA	22/07/2021	Meeting	Aidan Walsh (EPA) Robert Hughes Ken Aitken (RCMA) Andrea Wills (RCMA)	Discussion on appeals received for the Cervantes 1 project	RCMA to provide a response to the appeals
EPA	14/12/2021	Email	Aidan Walsh (EPA) registrar@dwer.wa.gov.au Andrea Wills (RCMA)	RCMA inquiry as to the status of the Management Plans that were submitted 18/07/2021.	EPA phoned RCMA on 16/012/2021 to let them know that the plans were with DBCA.
EPA	17/12/2021	Email	Ken Aitken (RCMA) Natalie McAlpine (EPA) Aidan Walsh (EPA) Andrea Wills (RCMA)	Introductory email and request for email to discuss Cervantes 1 Management Plans and rehabilitation forward regulatory approval timeline.	EPA responded with a suggested meeting date of 17/01/2021. RCMA responded with a request for an earlier date.
EPA	21/01/2022	Letter (email)	Aidan Walsh (EPA) Ken Aitken (RCMA) Andrea Wills (RCMA) Natalie McAlpine (EPA)	EPA request for amendments to Management Plans following EPA and DBCA review.	
Appeals Convenor	19/07/2021	Letter (email)	Zoe Laing (AC) Chris Newport (RCMA) Ken Aitken (RCMA)	Notification of one appeal to the Cervantes 1 proposal and potential for second appeal. AC providing opportunity for RCMA to respond to appeal by 16 th August 2021	AC phoned RCMA to outline that second appeal was a caller to the Minister that did not formally lodge an appeal. AC forwarded on the 20/07/2021 the second appeal to RCMA.
Appeals Convenor	09/08/2021	Letter (email)	Zoe Laing (AC) Ken Aitken (RCMA) Chris Newport (RCMA) Andrea Wills (RCMA)	RCMA submitted their response to the two appeals provided by the AC.	Acknowledgement of receipt of appeals response received from AC
Appeals Convenor	18/08/2021	Meeting	Emma Gaunt (AC) Michael Power (AC) Chris Newport (RCMA) Ken Aitken (RCMA) Andrea Wills (RCMA)	Introductory meeting to run through the process that will be undertaken for the Cervantes 1 proposal and outline a timeframe.	
Appeals Convenor	24/09/2021	Email	Michael Power (AC) Ken Aitken (RCMA) Chris Newport (RCMA) Andrea Wills (RCMA)	Request for the Office of the Appeals Convenor for a copy of the Cervantes 1 Rehabilitation Plan.	RCMA forwarded Version 1 and 2 and the tracked changes version of the Rehabilitation Plan to the AC 27/09/2021.
Appeals Convenor	05/11/2021	Letter (email)	Zoe Laing (AC) Ken Aitken (RCMA) Chris Newport (RCMA)	Advice from AC on Minister for Environment's decision on the Cervantes 1 appeal. Correspondence contained the determination and the Appeal Convenor's report.	
Appeals Convenor	05/11/2021	Letter (email)	Zoe Laing (AC) Ken Aitken (RCMA) Chris Newport (RCMA)	AC seeks advice from RCMA on the implementation conditions for the Cervantes 1 proposal.	RCMA responded 8/11/2021 stating they have reviewed the amendments made to the conditions, agree with the changes and have no further comment.
Appeals Convenor	03/12/2021	Phone	Ken Aitken (RCMA) Emma Gaunt (AC)	RCMA see update on appeal. AC advises that all three ministers have signed off and the project is waiting on overarching Minister signature. Then there will be a period where RCMA can appeal before the project will be officially posted on the EPA website.	
Appeals Convenor	14/12/2021	Letter (email)	Emma Gaunt (AC) Chris Newport (RCMA) Ken Aitken (RCMA)	Letter issuing Ministerial Statement 1178 and notifying RCMA that they have 14 days to appeal the conditions or they can waive the right to appeal. Also accompanied by another email notifying RCMA that the Statement is published on the EPA website with a link provided.	RCMA sent the Appeals Convenor a letter waiving their right to appeal on 14/12/2021. Receipt of this letter was acknowledged by the Appeals Convenor and the final approval letter was issued 14/12/2021. The email informed RCMA that the decision-making authorities have been advised that they may now exercise their powers with respect to the proposal.
DWER	12/11/2020	Email	IBSA Submissions (DWER) Andrea Wills (RCMA)	Submission and acceptance of IBSA data packages <ul style="list-style-type: none"> Cervantes 1 Conventional Well Spring Targeted Survey Cervantes Conventional Well Level 1 Fauna Survey, Reconnaissance and Targeted Flora and Vegetation Survey 	Receipt of IBSA numbers: <ul style="list-style-type: none"> IBSA-2020-0468 IBSA-2020-0469
DWER	04/01/2022	Phone / Email	Jack Elwin (DWER) Andrea Wills (RCMA)	DWER Compliance and Enforcement have reviewed RCMA Compliance Assessment Plan and require amendments to meet the departments requirements.	

Stakeholder	Date	Type of Consultation	People Involved	Summary of Discussions	Outcomes of Consultation
Shire of Irwin	31/01/2020	Phone	Andrea Wills (RCMA) Reception (Sol)	Organisation of a meeting to present the Cervantes 1 Proposal to the Shire of Irwin	Email sent with information on project to Brendan Jeans (Sol)
Shire of Irwin	27/02/2020	Phone	Andrea Wills (RCMA) Brendan Jeans (Sol)	Proposed window for meeting date General discussion on oil and gas industry in Shire of Irwin including MEL personnel experience in Perth Basin	BJ to get back to MEL with proposed date and any additional information to be presented at meeting by MEL
Shire of Irwin	13/11/2020	Phone & Email	Andrea Wills (RCMA) Brendan Jeans (Sol)	Organisation of meeting for the 19/11/2020 1pm	Change of meeting time to 10am
Shire of Irwin	19/11/2020	Meeting	Andrea Wills (RCMA) Peter Traylen (Sol) Mark Teale (Sol) Ken Aitken (RCMA) Mark Jenkins (RCMA) Paul Bird (Metgasco)	Discussion of general activities in the Shire of Irwin and the Cervantes 1 Proposal.	RCMA to provide a summary document outlining the Cervantes 1 proposal for the Shire CEO Shane Ivers. This was emailed through 23/11/2020.
Shire of Irwin	30/11/2020	Phone & Email	Andrea Wills (RCMA) Brendan Jeans (Sol)	Discussion of DoA and Sewage for workers accommodation on rig site. If there is to be sleepers (not just office and ablutions) at rig site then a DoA and Bushfire Management Plan will be required. See the Department of Planning website and a bushfire consultant for further information. Main requirements will be potable water and firebreaks.	Brendan to check with the EHO on whether there are any approval requirements for self contained storage of effluent to be disposed offsite.
Shire of Irwin	11/12/2021	Phone	Andrea Wills (RCMA) Brendan Jeans (Sol)	Discussion of the adequacy of a Bushfire Management Statement to meet the requirements for the DoA application. Consensus was that it depended on what was covered in the BMS and that Chadwick Barron (Bushfire Consultant proposing the BMS) would need to get in contact with the Sol.	Andrea Wills to get Chadwick Barron to contact Sol in regard to the BMS.
Shire of Irwin	07/01/2021	Phone	Andrea Wills (RCMA) Brendan Jeans (Sol)	Confirmation that based on the emails with Chadwick Barron (BMS), the Shire is confident with the Bushfire Management Statement Approach to be provided by BBS. RCMA are free to use either consultant (Bushfire Planning Australia or BBS) for their submission. RCMA will most likely go with BBS due to their experience with drilling proposals.	RCMA to provide submission for Sol assessment.
Shire of Irwin	08/01/2021	Phone	Andrea Wills (RCMA) Mark Teal (Sol)	RCMA inquiry as to upcoming week and potential fire bans. The current week has been horrific but next week the weather pattern is from the south so less likely to have vehicle movement bans. RCMA to contact Sol Monday to get an update on situation.	RCMA phoned Sol 11/01/2021 and the weather still looks good. RCMA to check phone app in morning before commencing survey.
Shire of Irwin	07/10/2021	Email	Mark Jenkins (Aztech) Brendan Jeans (Sol)	RCMA submission of Temporary Camp DA.	Sol responded with a query on 13/01/2022 in regard to the owner of the property for the location of the temporary camp. The owner has to be as per the planning regulations and not as per the petroleum licence as was advised by DBCA.
Arc Infrastructure	03/12/2019	Phone	Garry Bird (Arc Geraldton) Andrea Wills (RCMA)	MEL to drill adjacent to Arc Infrastructure near Dongara-Eneabba Railway Line	Garry to forward details on to state government party responsible for consulting with industry such as Western Power etc
Arc Infrastructure	03/12/2019	Phone	Karen van der Merwe (Arc) Andrea Wills (RCMA)	MEL to provide some preliminary info on activity in the aim to set up a meeting	ASW forwarded information pack via email to thirdparty.services@arcinfra.com on 04/12/2019
Arc Infrastructure	16/12/2019	Phone	Karen van der Merwe (Arc) Andrea Wills (RCMA)	MEL information pack has not been received by Arc. ASW to resend	KVDM confirmed receipt of resent information pack
Arc Infrastructure	20/12/2019	Email	Jason Crowden (Arc) Andrea Wills (RCMA)	Jason suggested a meeting time after 06/01/2020	Meeting arranged for 10/01/2020
Arc Infrastructure	10/01/2020	Meeting	Jason Crowden (Arc) Cameron (Arc) Ken Aitken (RCMA) Andrea Wills (RCMA)	MEL introduction of project and discussion of information required to determine constraints on railway. MEL provided approximate railway crossing coordinates	Email confirmation of outcomes: <ul style="list-style-type: none"> Arc to provide MEL with the width of the railway easement and the restrictions on the use of the railway crossing. MEL are then to provide layouts showing proposed impacts under varying scenarios (construction, development, rehab)
Arc Infrastructure	27/02/2020	Email	Jason Crowden (Arc) Andrea Wills (RCMA)	Arc provided width of railway easement and advised that the crossing is a private crossing	Arc to provide further details on the private crossing. MEL to provide project layouts to Arc.

Stakeholder	Date	Type of Consultation	People Involved	Summary of Discussions	Outcomes of Consultation
Arc Infrastructure	15/04/2020	Email	Jason Crowden (Arc) Andrea Wills (RCMA)	MEL provided layouts covering project scenarios from site preparation through to rehabilitation	Meeting to follow
Arc Infrastructure	02/06/2020	Meeting	Jason Crowden (Arc) Ken Aitken (RCMA) Andrea Wills (RCMA)	Discussion on Arc internal questions on RCMA's proposal	Arc to send through queries for RCMA to respond to. Arc approval anticipated in 4 weeks.
Arc Infrastructure	15/06/2020	Phone	Jason Crowden (Arc) Andrea Wills (RCMA)	Enquiry as to status of Arc internal queries to be sent through to RCMA	Queries still being compiled and will be sent through once final submission has been provided to JC
Arc Infrastructure	01/07/2020	Email	Jason Crowden (Arc) Andrea Wills (RCMA)	RCMA enquiry as to progress of Cervantes 1 proposal since 02/06/2020 meeting.	Arc notified RCMA on 02//07/2020 that they will provide further updates ASAP – by 06/07/2020.
Arc Infrastructure	03/08/2020	Phone Email	Sudip Saha (Arc) Andrea Wills (RCMA)	RCMA enquired on the status of the Cervantes 1 proposal in the absence of Jason Crowden. Sudip was unaware of the project despite being Jason's Manager. Sudip requested details of the project and all correspondence which had taken place with Jason to be emailed through.	An email with a proposal summary and correspondence details was provided to Sudip Saha 03/08/2020.
Arc Infrastructure	06/08/2020	Email	Hannah Mackey (Arc) Andrea Wills (RCMA)	Notice from Arc Infrastructure that they will be unable to licence RCMA's use of the railway corridor.	RCMA request a suitable contact name at the PTA.
Arc Infrastructure	07/08/2020	Email	Hannah Mackey (Arc) Andrea Wills (RCMA)	Arc let RCMA know that they can contact Shelly Brindal (Corridor and Heritage Coordinator) at PTA.	RCMA request a time to meet with Arc to discuss the issues with access to the railway corridor.
Arc Infrastructure	11/08/2020	Email	Hannah Mackey (Arc) Andrea Wills (RCMA)	Arc notify in the morning that RCMA that they are reviewing their decision again internally. Late in the day they reiterate their previous decision not to licence RCMA's use of the railway corridor.	
Arc Infrastructure	17/08/2020	Email	Ken Aitken (RCMA) Sudip Saha (Arc) Hannah Mackey (Arc) Andrea Wills (RCMA)	Email from Ken introducing himself and requesting a meeting to: <ul style="list-style-type: none"> Clarify the scope of work to drill the 23 day Cervantes-1 exploration well (planned for late Q1 CY2021) Clearly articulate why we believe this project has extremely low risk to your track infrastructure, and why we believe this project has the potential to be a win/win for both our organisations 	
Arc Infrastructure	26/08/2020	Meeting Email	Ken Aitken (RCMA) Sudip Saha (Arc) Hannah Mackey (Arc) Andrea Wills (RCMA)	RCMA provided a project overview, timeline, summary of stakeholder engagement, discussion of risks and mitigation and project potential during a meeting with Arc. Arc raised their concerns in regard to the potential for a new contract to initiate during RCMA's use of the railway corridor.	Outcomes of the meeting as per RCMA email 26/08/2020: <ul style="list-style-type: none"> RCMA will arrange a meeting with the PTA to present the slides from today Arc will follow up with their executive RCMA will revert with feedback from the meeting with PTA Arc will advise on the private owner of the railway crossing
Arc Infrastructure	27/08/2020	Email	Hannah Mackey (Arc) Andrea Wills (RCMA)	Clarification of railway corridor tenure between Arc and RCMA.	
Arc Infrastructure	02/09/2020	Email	Hannah Mackey (Arc) Ken Aitken (RCMA) Andrea Wills (RCMA) Sudip Saha (Arc)	Notification of approval from Arc for RCMA to use the rail corridor subject to conditions.	RCMA requested a meeting to discuss the conditions by email on 03/09/2020.
Arc Infrastructure	07/09/2020	Meeting	Hannah Mackey (Arc) Ken Aitken (RCMA) Andrea Wills (RCMA) Sudip Saha (Arc)	Meeting to discuss licence conditions on RCMA corridor access agreement.	RCMA sent through a follow up email on the 07/09/2020 summarising the actions for all parties to follow up. RCMA sent through the items assigned to RCMA on the 07/09/2020 by email and Dropbox.
Arc Infrastructure	10/09/2020	Email Phone	Hannah Mackey (Arc) Andrea Wills (RCMA)	Hannah was initially unable to download the files Andrea sent through for the Arc Environment Team however the Arc Environment Team managed to download the files. Hannah is working on the draft contract but waiting for the details of trucks and access track construction from RCMA.	Andrea to follow up details of trucks and access track construction.
Arc Infrastructure	07/10/2020 - 08/10/2020	Emails	Hannah Mackey (Arc) Helen Ainsworth (Arc) Andrea Wills (RCMA)	Email requests clarifying details for contacts and addresses for licences and agreements	RCMA provided requested information
Arc Infrastructure	09/10/2020	Email	Hannah Mackey (Arc) Andrea Wills (RCMA)	Arc forwarded draft Licence to Use and Occupy Corridor	LTU under review by RCMA

Stakeholder	Date	Type of Consultation	People Involved	Summary of Discussions	Outcomes of Consultation
			Ken Aitken (RCMA)		
Arc Infrastructure	13/10/2020	Email	Helen Ainsworth (Arc) Chris Newport (RCMA) Andrea Wills (RCMA)	Arc forwarded an Early Engagement Agreement (EEA) (agreement for reimbursement of Arc services).	EEA under review by RCMA
Arc Infrastructure	15/10/2020	Email	Andrea Wills (RCMA) Hannah Mackey (Arc)	RCMA forwarded details of the proposed track construction to RCMA.	Arc acknowledged receipt and advised that the information had been passed on to the Third Party Projects Team.
Arc Infrastructure	02/11/2020	Email	Ken Aitken (RCMA) Hannah Mackey (Arc) Andrea Wills (RCMA)	RCMA provided a copy of the Licence to Use marked with RCMA's feedback	Arc sent through an email acknowledgement of receipt.
Arc Infrastructure	02/11/2020	Email	Ken Aitken (RCMA) Helen Ainsworth (Arc) Hannah Mackey (Arc) Andrea Wills (RCMA)	RCMA provided a copy of the Early Engagement Agreement marked with RCMA's feedback	
Arc Infrastructure	12/11/2020	Email	Ken Aitken (RCMA) Hannah Mackey (Arc) Andrea Wills (RCMA)	RCMA offered to hold a VC to assist in going through the documents.	Arc responded 13/11/2020 that they would have responses back shortly.
Arc Infrastructure	20/11/2020	Email	Sarah Fitzgerald (Arc) Ken Aitken (RCMA) Andrea Wills (RCMA) Hannah Mackey (Arc) Helen Ainsworth (Arc)	RCMA provided a response to RCMA's requested contract departures.	RCMA to respond.
Arc Infrastructure	20/11/2020	Email	Andrea Wills (RCMA) Sarah Fitzgerald (Arc) Ken Aitken (RCMA) Hannah Mackey (Arc) Helen Ainsworth (Arc)	RCMA provided final feedback on Arc's Licence to Use and Early Engagement Agreement. RCMA extended an invitation to Arc to participate in a meeting / zoom teleconference to accelerate final alignment and contract execution.	Arc to advise a suitable time to meet.
Arc Infrastructure	09/12/2020	Phone and Email	Andrea Wills (RCMA) Sarah Fitzgerald (Arc)	RCMA called to follow up on offer of meeting to discuss responses on departures. Arc relayed that they would have responses by the end of the week. The follow up email contained copies of the standard deed of indemnity for construction works and a construction licence template.	Arc to provide responses to RCMA contract departures by the end of the week. RCMA to review the terms of the documents provided.
Arc Infrastructure	10/12/2020	Email	Andrea Wills (RCMA) Sarah Fitzgerald (Arc) Ken Aitken (RCMA) Hannah Mackey (Arc) Helen Ainsworth (Arc)	Arc provided responses to RCMA's departures on the Licence to Use and EEA. Arc proposed Tuesday or Wednesday for a meeting time.	RCMA responded by email that all the responses look good and that RCMA look forward to receiving Schedule 2 Table 1 of the EEA before a meeting on Tuesday at a time suitable to Arc. Arc responded with a request for further information on the works that were proposed on the rail crossing before Table 1 could be populated. RCMA to follow up.
Arc Infrastructure	15/12/2020	Email	Andrea Wills (RCMA) Sarah Fitzgerald (Arc)	Arc offered to provide the marked up documents for RCMA to review and finalise. Arc provided times available for meeting.	RCMA followed up with a phone call 15/12/2020 to delay the meeting until after RCMA had provided the information for Table 1 and it had been populated by Arc. This was followed up with a confirmatory email that included a request to finalise the Licence to Use now.
Arc Infrastructure	10/12/2020	Email	Andrea Wills (RCMA) Helen Ainsworth (Arc) Sarah Fitzgerald (Arc) Ken Aitken (RCMA) Stella Seo (Arc) Hannah Mackey (Arc)	RCMA provided a description of the upgrade works to be undertaken at the railway crossing along with photos.	Arc to populate EEA Schedule 2 Table 1 before a meeting with RCMA.
Arc Infrastructure	16/12/2020	Email	Andrea Wills (RCMA) Sarah Fitzgerald (Arc)	Arc forwards updated (tracked) versions of the EEA and Licence to Use, noting that a licensed area plan will be added to the Licence to Use as part of EEA costs.	RCMA inquired on the 22/12/2020 whether the existing plan was satisfactory for the purpose. Arc responded that a new layout is required as Arc would like details in a specific format on the layout.
Arc Infrastructure	22/12/2020	Email	Andrea Wills (RCMA) Sarah Fitzgerald (Arc) Ken Aitken (RCMA) Hannah Mackey (Arc) Helen Ainsworth (Arc)	RCMA provided details of their review of the Deed of Indemnity (Construction Works) and proposed amendments.	

Stakeholder	Date	Type of Consultation	People Involved	Summary of Discussions	Outcomes of Consultation
Arc Infrastructure	06/01/2021	Email	Andrea Wills (RCMA) Sarah Fitzgerald (Arc) Ken Aitken (RCMA) Hannah Mackey (Arc) Helen Ainsworth (Arc)	RCMA provided their review of the Construction Licence marked up directly into the licence and cross referenced in the schedule of departures.	
Arc Infrastructure	15/01/2021	Email	Helen Ainsworth (Arc) Andrea Wills (RCMA)	Arc inquiry as to RCMA's Cervantes 1 project environmental status internally within Arc. Also request for any clearing permits.	RCMA advised by email 15/01/2021 that all documents (including environmental) have been provided to the Arc legal team with no feedback on the Arc internal processes. Separately RCMA advised that the Cervantes 1 activity was exempt from the requirements of a clearing permit.
Arc Infrastructure	14/01/2021	Phone / Email	Andrea Wills (RCMA) Sarah Fitzgerald (Arc)	RCMA enquired as to the status of the EEA. Arc is finalising the cost estimate prior to sending through.	Email sent by Arc with lump sum cost estimate however itemised list of deliverables has been removed.
Arc Infrastructure	15/01/2021	Email	Andrea Wills (RCMA) Sarah Fitzgerald (Arc)	RCMA requested a list of deliverables in the scope of services.	Arc sent a revised EEA with a list of tasks to be conducted under the EEA.
Arc Infrastructure	21/01/2021	Email	Andrea Wills (RCMA) Sarah Fitzgerald (Arc)	RCMA request to make it clear that third party costs are part of the lump sum estimate in the EEA.	Arc provided updated EEA.
Arc Infrastructure	22/01/2021	Email	Andrea Wills (RCMA) Sarah Fitzgerald (Arc)	RCMA provided signed EEA to Arc.	Arc provided fully executed EEA to RCMA.
Arc Infrastructure	03/02/2021	Email	Andrea Wills (RCMA) Sarah Fitzgerald (Arc)	RCMA provided a copy of the Railway Reserve Site Preparation Plan and Vegetation Management Plan.	Arc acknowledge receipt and intent to send to the third party projects team.
Arc Infrastructure	10/02/2021	Phone	Andrea Wills (RCMA) Sarah Fitzgerald (Arc) Helen Ainsworth (Arc)	RCMA contacted Sarah to find out the contact at Third Party Services. Sarah provided Helen Ainsworth's details. RCMA contacted Helen to check that she had all documents she required to undertake design review. Helen advised that she was waiting for legal to complete their work before they commenced any activities. RCMA contacted Sarah who advised that legal had completed all their work.	Arc Legal to advise Third Party Services that all Legal work is complete and Third Party Services can commence design review.
Arc Infrastructure	10/02/2021	Email	Helen Ainsworth (Arc) Andrea Wills (RCMA)	Arc requested RCMA Safety Management Plan. RCMA sent through Cervantes 1 Civils Safety Management Plan [RCMA-02-SAF-PLN-002v0].	Arc acknowledged receipt of SMP and notified RCMA that Arc will get the construction licence completed.
Arc Infrastructure	25/02/2021	Email	Helen Ainsworth (Arc) Andrea Wills (RCMA) Sarah Fitzgerald (Arc)	Arc sent through the Construction Licence. RCMA reviewed the Licence and sent through the updated Schedule of Departures. Sarah Fitzgerald (Arc) responded with a marked up Schedule of Departures.	Arc provided responses to the requested departures on 04/03/2021 and again to RCMA's response (18/3/2021) on 18/03/2021. RCMA agreed to final changes 26/03/2021.
Arc Infrastructure	31/03/2021	Email	Sarah Fitzgerald (Arc) Andrea Wills (RCMA)	Arc forwarded the Construction Licence for Execution which RCMA signed and returned.	Arc provided the fully executed Construction Licence 24/05/2021.
Arc Infrastructure	15/09/2021	Email	Helen Ainsworth (Arc) Andrea Wills (RCMA)	Arc enquiry as to whether RCMA had commenced works in the railway easement. RCMA advised that they were still waiting on the EPA and would contact Arc when they had an anticipated construction date.	RCMA to contact Arc with estimated construction date.
Arc Infrastructure	16/09/2021	Email	Hannah Mackey (Arc) Andrea Wills (RCMA)	Arc enquiry as to whether there were any outstanding issues on the Licence to Use. RCMA followed up with the departures previously provided. Arc responded 23/09/2021 and forwarded the Licence to Use for execution 19/11/2021.	RCMA to execute the Licence to Use.
Arc Infrastructure	23/09/2021	Email	Hannah Mackey (Arc) Andrea Wills (RCMA)	RCMA follow up with Arc on whether the Deed of Indemnity is outstanding. Arc provided the Deed for execution 12/10/2021. RCMA provided executed version 12/10/2021.	Arc provided fully executed version of document 14/10/2021.
Arc Infrastructure	27/10/2021	Email	Hannah Mackey (Arc) Andrea Wills (RCMA)	Arc query on track widening for final checks on Licence to Use. Licence to Use was provided for execution 19/11/2021. RCMA provided executed version to Arc 03/12/2021.	Arc provided fully executed version of document 13/12/2021.
Public Transport Authority	12/08/2020	Phone	Shelley Brindal (PTA) Andrea Wills (RCMA)	RCMA contacted PTA in regard to Arc refusal to licence RCMA's use of the railway corridor. Shelley requested further information on the project noting that PTA generally follow Arc's decisions.	RCMA to email PTA a summary of the Cervantes 1 Project in regard to the railway corridor usage.

Stakeholder	Date	Type of Consultation	People Involved	Summary of Discussions	Outcomes of Consultation
Public Transport Authority	18/08/2020	Email	Shelley Brindal (PTA) Andrea Wills (RCMA) Ken Aitken (RCMA)	RCMA forwarded a summary of the Cervantes 1 Project in regard to the railway corridor usage.	RCMA followed the email up with a phone call on the 19/08/2020 which PTA acknowledged by email.
Public Transport Authority	26/08/2020	Phone	Shelley Brindal (PTA) Andrea Wills (RCMA)	Conversation where RCMA informed PTA of Arc meeting outcomes. PTA proposed to review documents provided by RCMA and contact Arc.	PTA to contact Arc with relevant clauses for an access agreement with RCMA.
Public Transport Authority	27/08/2020	Email	Shelley Brindal (PTA) Andrea Wills (RCMA) Ken Aitken (RCMA)	Notification that PTA has made recommendations for options in terms of clauses to counteract their arguments for not allowing its use.	Shelley to contact RCMA when there is an update.
Public Transport Authority	03/09/2020	Phone	Andrea Wills (RCMA) Shelley Brindal (PTA)	Discussion in regard to Arc's reversal of decision to allow access to railway corridor. Discussion centred on condition allowing Arc to revoke licence mid activity. Shelley advised that PTA would place same condition on access agreement and RCMA should tread carefully if going back to Arc on this condition. Suggestion to talk to Arc about the notice period associated with this clause.	
MEPAU	06/01/2020	Phone	Steve McCracken (MEPAU) Andrea Wills (RCMA)	MEL requested access to vegetation communities mapping conducted by ARC Energy across the Cervantes 1 Proposal Area	ASW provided an email with MEL's official request.
MEPAU	16/01/2020	Email	Steve McCracken (MEPAU) Andrea Wills (RCMA)	MEPAU permit MEL to access the Denison 3D ARC GIS files as requested 06/01/2020	SMc would like to discuss north Perth basin generally with Ken Aitken. ASW passed on Steve's details to Ken.
MEPAU	23/01/2020	Email	Ken Aitken (RCMA) Steve McCracken (MEPAU)	Organisation for a meeting to discuss North Perth Basin	Meeting organised and held. Personnel continue to meet on a social basis unrelated to the Cervantes 1 project.
DBCA	06/01/2020	Phone	Murray Baker (DBCA) Andrea Wills (RCMA)	Andrea briefed Murray on the Cervantes 1 Proposal to provide enough information for a meeting with appropriate DBCA personnel.	Murray is to get back to Andrea with possible meeting times. Andrea is to prepare material on: <ul style="list-style-type: none"> Who is Metgasco / RCMA? Proposal background including access routes Management measures to be implemented
DBCA	15/01/2020	Meeting	Murray Baker (DBCA) Cass Gray (DBCA) Alanna Channa (DBCA)(phone) Ken Aitken (RCMA) Andrea Wills (RCMA)	Briefing on Cervantes 1 Proposal	RCMA to determine portion of access track in reserve vs railway easement RCMA to submit management strategies / management plans to DBCA prior to 15A referral: <ul style="list-style-type: none"> Fire Vegetation Hygiene (Weed & Dieback) Fauna Access & Communications Protocol
DBCA	04/02/2020	Phone	Murray Baker (DBCA) Andrea Wills (RCMA)	DBCA Jurien Bay Feedback on Cervantes 1 Proposal: <ul style="list-style-type: none"> There is a known PEC in that area (as was discussed in the meeting) What is the fate of the marl on completion of the project? MEL anticipate removal for Wellpad however access tracks are dependent on DBCA desired long-term track requirements What fill type will MEL be using? Limestone Marl 	DBCA to follow up: <ul style="list-style-type: none"> DBCA marl testing / interpretation requirements Feedback MEL comms to Jurien Bay
DBCA	06/02/2020	Phone	Murray Baker (DBCA) Andrea Wills (RCMA)	DBCA follow up from previous conversation: <ul style="list-style-type: none"> At this stage MEL proposal for Marl is adequate and should be documented in their Hygiene Management Plan DBCA will need to consider decommissioning requirements 	MEL to put together a proposal on decommissioning for DBCA to comment and amend.
DBCA	30/04/2020	Email	Murray Baker (DBCA) Andrea Wills (RCMA)	RCMA provided DBCA with supporting documents for DBCA review and endorsement	Confirmation of receipt email provided Cassyanna Gray (DBCA) also requested the "Description of the Activity" from the EP
DBCA	01/05/2020	Email	Cassyanna Gray (DBCA) Andrea Wills (RCMA)	DBCA request for Description of Activities	Section 1 and 2 of the Cervantes 1 EP provided to DBCA by RCMA
DBCA	04/06/2020	Phone	Cassyanna Gray (DBCA) Andrea Wills (RCMA)	Update on progress of DBCA document review	

Stakeholder	Date	Type of Consultation	People Involved	Summary of Discussions	Outcomes of Consultation
DBCA	23/06/2020	Phone	Murray Baker (DBCA) Andrea Wills (RCMA)	Update on progress of DBCA document review	
DBCA	30/06/2020	Email and Phone	Cassyanna Gray (DBCA) Andrea Wills (RCMA)	DBCA notification that the Environmental Management Branch is going to present the Cervantes 1 proposal to the Conservation and Parks Commission (CPC). DBCA requested .shp files of the project area.	RCMA provide .shp files to DBCA and requested to see the information that was being presented to CPC
DBCA	07/07/2020	Email	Murray Baker (DBCA) Andrea Wills (RCMA)	DBCA provided advice on the supporting documents submitted by RCMA for DBCA review and endorsement. Recommendations centred around dieback and rehabilitation management.	RCMA will address DBCA's comments and recommendations and provide a response.
DBCA	21/07/2020	Email	Andrea Wills (RCMA) Murray Baker (DBCA)	RCMA request for discussion with DBCA on follow-up to each of DBCA's recommendations.	
DBCA	27/07/2020	Email Phone	Andrea Wills (RCMA) Murray Baker (DBCA) Cassyanna Gray (DBCA)	RCMA Response to DBCA Section 15A Recommendations including desktop and field flora and fauna surveys.	
DBCA	31/08/2020	Phone	Cassyanna Gray (DBCA) Andrea Wills (RCMA)	Discussion was held in regard to rehabilitation plan requirements and when the updates to the hygiene management plan will be completed with reference to the timing for the September Conservation Commission Meeting.	Andrea to contact Glevan to determine hygiene management plan timeframe.
DBCA	08/09/2020	Email	Andrea Wills (RCMA) Cassyanna Gray (DBCA) Michelle Corbellini (DBCA) Ken Aitken (RCMA)	Submission of the updated hygiene management plan and updated RCMA response to DBCA recommendations. Notes include that DBCA is to provide dates for September marl pit visit and RCMA to provide rehabilitation timeframes once signed off next week.	The Rehabilitation excerpt containing rehabilitation timeframes was provided by email on the 09/09/2020.
DBCA	14/09/2020	Phone Email	Cassyanna Gray (DBCA) Andrea Wills (RCMA)	Discussion on Conservation Commission submission deadline of 05/10/2020 and requirement for updated Environment Plan by that date. Also discussed either 22 nd or 23 rd September for marl pit visit. Alanna Chant to attend.	Confirmation email of Alanna Chant attendance at marl pit visit received 14/09/2020. Andrea emailed Alanna to confirm 22/09/2020 meeting at 11:30am at the corner of Mt Adams Rd and Brand Hwy.
DBCA	22/09/2020	Site Visit	Evan Brown (Glevan Consulting / RCMA) Allan Lenane (RCMA) Steve Buitenhuis (DBCA) Alanna Chant (DBCA)	Site visit to proposed marl pit and two site where marl from that pit has been utilised in past 18 months to interpret sites for dieback.	Glevan took samples on location. DBCA made observations to provide advice to the Environmental Management Branch.
DBCA	02/10/2020	Email	Cassyanna Gray (DBCA) Andrea Wills (RCMA) Alanna Chant (DBCA) Steve Buitenhuis (DBCA) Michelle Corbellini (DBCA)	DBCA Environmental Management Branch provided advice on hygiene management for the Cervantes 1 project following the DBCA site visit. Existing commitments are made more specific.	RCMA updated the Hygiene Management and Environment Plan with specific commitments outlined in DBCA's advice.
DBCA	07/10/2020	Email	Andrea Wills (RCMA) Cassyanna Gray (DBCA)	RCMA forwarded the latest revision of the Environment Plan and Weed and Dieback Hygiene Management Plan to DBCA for submission to the Conservation Commission. A note was provided that the Glevan report and Woodman report will be forwarded once available.	DBCA confirmed receipt of the documents.
DBCA	19/10/2020	Email	Andrea Wills (RCMA) Cassyanna Gray (DBCA)	RCMA sent DBCA the Glevan Marl Pit Interpretation Report	
DBCA	23/10/2020	Phone	Cassyanna Gray (DBCA) Andrea Wills (RCMA)	DBCA called to say that all documents had been received and were with the Conservation Commission who were sitting 23/10/2020. DBCA requested a copy of the updated HMP (with the marl pit report incorporated) and the initial Rehabilitation Plan referred to in the EP. RCMA also advised that the Spring Survey Report was available and would send it through with the other documents.	RCMA to provide documents to DBCA: <ul style="list-style-type: none"> • Spring Survey • Rehabilitation Plan • Hygiene Management Plan
DBCA	30/10/2020 & 10/11/2020	Email	Andrea Wills (RCMA) Cassyanna Gray (DBCA)	RCMA provided promised documents to DBCA: <ul style="list-style-type: none"> • Spring Survey • Rehabilitation Plan • Hygiene Management Plan 	DBCA responded via email 11/11/2020 confirming receipt of documents

Stakeholder	Date	Type of Consultation	People Involved	Summary of Discussions	Outcomes of Consultation
DBCA	13/11/2020	Email and Phone	Andrea Wills (RCMA) Cassyanna Gray (DBCA)	RCMA and DBCA discussed Section 15A process and how the Section 15A Referral will now come through as RCMA have lodged a well application (not just an EP). DBCA outlined that the process of providing advice to the Minister was nearly complete only waiting on the outcome of the Conservation Commission. DBCA enquired about the EPA Referral and were not aware that the DBCA Director had been asked for advice by the EPA. DBCA mentioned that they would follow up the progress of this.	DBCA to follow up progress of EPA request for advice on Section 38 Referral
DBCA	17/11/2020	Phone	Andrea Wills (RCMA) Cassyanna Gray (DBCA)	RCMA and DBCA discussed rehabilitation planning in light of DMIRS new requests. DBCA have not reviewed the Rehabilitation Plan yet and could not comment on whether they require further detail. RCMA enquired about the monitoring bore which is in our EP. DBCA were not sure if a separate CALM application was required from the petroleum drilling CALM application.	DBCA to review Rehabilitation Plan DBCA to check CALM application covers all aspects of EP (including monitoring bore)
DBCA	30/11/2020	Phone	Andrea Wills (RCMA) Cassyanna Gray (DBCA)	Conservation Commission has further queries on Fire Response Preparedness. RCMA to provide details. DBCA are preparing a submission to EPA by 01/12/2020. DBCA have not had an opportunity to review RCMA's Rehabilitation Plan as yet.	RCMA to provide information on Fire Response Preparedness. Email memo sent to DBCA 30/11/2020.
DBCA	14/01/2021	Phone	Andrea Wills (RCMA) Cassyanna Gray (DBCA)	RCMA and DBCA discussed the status of the rehabilitation plan and RCMA's intent to further develop the plan in line with DMIRS requests. DBCA are satisfied with the current intended completion criteria and would like to see the further development include specific targets.	RCMA to provide DBCA with Rehabilitation Plan in next two weeks.
DBCA	20/01/2021	Phone and email	Cassyanna Gray (DBCA) Andrea Wills (RCMA)	DBCA request for a summary memo on well testing to address suitable timing, surveillance, and planned response to ignitions in relation to fire management during well testing, as well as soil/groundwater contamination management and monitoring measures.	RCMA provided the memo 21/01/2021.
DBCA	03/02/2021	Email	Andrea Wills (RCMA) Cassyanna Gray (DBCA)	RCMA forwarded the updated Cervantes 1 Rehabilitation Plan [Rev 0] to DBCA for review and approval.	DBCA confirmed receipt of the Rehabilitation Plan.
DBCA	09/02/2021	Phone	Andrea Wills (RCMA) Cassyanna Gray (DBCA)	RCMA following up DBCA on Rehabilitation Plan Review. EMB currently waiting on comments from the region.	DBCA to provide comments on Rehabilitation Plan
DBCA	24/02/2021	Phone	Andrea Wills (RCMA) Cassyanna Gray (DBCA)	RCMA and DBCA catching up on progress since last conversation. Now that project will be assessed by the EPA, DBCA has received a submission request from the EPA. DBCA will be briefing the Conservation Commission although they may not have time to present at a meeting. DBCA have received comments from the Region on the Rehabilitation Plan and will provide feedback soon. EPA have notified DBCA that RCMA have proposed an \$100,000 Rehabilitation Bond. The basis of this bond is the cost of remediation if the site does not achieve its completion criteria.	DBCA to provide comments on Rehabilitation Plan
DBCA	15/03/2021	Phone	Andrea Wills (RCMA) Cassyanna Gray (DBCA)	DBCA personnel have been away on sick leave. DBCA promise to have the Rehabilitation Plan back to RCMA by 16/03/2021.	DBCA to send Rehabilitation Plan to RCMA.
DBCA	16/03/2021	Email	Cassyanna Gray (DBCA) Andrea Wills (RCMA)	DBCA provided a table of comments to RCMA on the Rehabilitation Plan.	RCMA to address comments in a revised Rehabilitation Plan
DBCA	29/04/2021	Email	Andrea Wills (RCMA) Cassyanna Gray (DBCA) Michelle Corbellini (DBCA) Alanna Chant (DBCA) Laura Burns (DMIRS) Aidan Walsh (EPA) Ken Aitken (RCMA) Charlotte Patrick (DBCA)	RCMA provided a revised Rehabilitation Plan to DBCA and EPA.	DBCA advised that "It is understood the plan will be submitted to the Department of Water and Environmental Regulation (DWER) for review and approval; DBCA will provide any further comment on the plan to DWER if required to inform their review." RCMA clarified with EPA that the RCMA submission to EPA met DBCA's expectation 09/06/2021.

Stakeholder	Date	Type of Consultation	People Involved	Summary of Discussions	Outcomes of Consultation
			Murray Baker (DBCA)		
DBCA	15/11/2021	Phone	Andrea Wills (RCMA) Cassyanna Gray (DBCA)	RCMA enquired as to who they needed to put down as the landowner on their development application with the Shire of Irwin for the temporary buildings on the drill site. DBCA advised that in the first instance RCMA should put down RCMA as the Petroleum Licence holder.	RCMA to submit the DA as the “landowner”.
DBCA	16/12/2021	Phone / Email	Andrea Wills (RCMA) Charlotte Patrick (DBCA) Cassyanna Grey (DBCA) Murray Baker (DBCA)	RCMA request that DBCA phone RCMA to update RCMA on status of DBCA’s advice to EPA on the Cervantes 1 Management Plans.	Murray Baker called RCMA 16/12/2021 and advised that the EPA had only sent them the MPs 16/12/2021. They also had not sent through the Rehabilitation Plan. RCMA to provide a copy of the Rehabilitation Plan to DBCA.
DBCA	17/12/2021	Phone	Ken Aitken (RCMA) Murray Baker (DBCA)	RCMA inquiry as to timing of DBCA’s provision of advice to EPA. DBCA advised that the advice would be provided prior to the due date of 19/01/2022. It was noted that DBCA had only received three MPs and were missing the Rehabilitation Plan.	RCMA forwarded the Rehabilitation Plan to DBCA and EPA 17/12/2021. This document had previously been provided to both parties (29/04/2021 and 09/06/2021).
Other Perth Basin Petroleum Operators	Nov 2019 to Jan 2020	Meetings and Phone Calls	Various	Discussing availability of onshore drilling rigs planned to be in the Perth Basin in 2nd half of 2020. Collaboration/negotiation to secure well slot on a rig for Cervantes	Understand two rigs technically capable of drilling Cervantes will be mobilized to Perth Basin. Another smaller rig currently based in WA may also be available
YMAC	18/03/2020	Phone	Callum Forsey (YMAC) Andrea Wills (RCMA)	Potential for heritage sites in Cervantes 1 Project Area and arrangements required to be made for on ground heritage assessment	RCMA to send email to YMAC outlining project footprint so that YMAC can provide details of steps to be taken
YMAC	23/03/2020	Email	Callum Forsey (YMAC) Andrea Wills (RCMA) Glenn Archer (YMAC)	YMAC follow up email from phone call to provide details of YMAC lawyer for Southern Yamatji matters who will assist with progressing a survey agreement Provision of Survey Request Form	RCMA completed and returned the Survey Request Form and left messages with Glenn Archer to discuss the survey agreement
YMAC	02/06/2020	Email	Ebony Paskov (YMAC) Andrea Wills (RCMA)	Contact regarding draft agreement for on ground heritage survey prior to ground disturbing activities	Will phone 03/06/2020 AW forwarded draft information pack previously provided to Callum Forsey
YMAC	03/06/2020	Email	Ebony Paskov (YMAC) Andrea Wills (RCMA)	Advice that if a Petroleum Exploration and Heritage Protection Agreement was not in place then one would need to be drafted.	Follow-up phone call where EP agreed that she would draft the agreement and get back to AW by 05/06/2020
YMAC	16/06/2020	Email	Ebony Paskov (YMAC) Andrea Wills (RCMA)	Update from YMAC that the draft heritage agreement is being reviewed by the YMAC Heritage Unit	YMAC requested clarification on which party the agreement was with. RCMA confirmed that the agreement was with RCMA Australia.
YMAC	07/07/2020	Email	Ebony Paskov (YMAC) Andrea Wills (RCMA)	Notice from YMAC that the agreement is progressing and will be presented to the Southern Yamatji Working Group on 14/07/2020 and the agreement will be sent to RCMA on the 15/07/2020.	The SYA Petroleum Exploration and Heritage Protection Agreement was emailed to Andrea Wills 15/07/2020.
YMAC	03/08/2020	Meeting Letter	Ebony Paskov (YMAC) Jeremy Brown (YMAC) Ken Aitken (RCMA) Andrea Wills (RCMA)	Meeting held to discuss RCMA concerns regarding the standard agreement that has been provided to RCMA. YMAC stated that “The Southern Yamatji recognise that RCMA want something from them so they want something in return”.	YMAC agreed to review the agreement in light of RCMA’s concerns and get back to RCMA.
YMAC	10/08/2020	Email	Ebony Paskov (YMAC) Ken Aitken (RCMA) Jeremy Brown (YMAC) Andrea Wills (RCMA)	YMAC send through a revised SYA Petroleum Exploration Heritage Agreement inviting RCMA to add any comments or changes directly to the document using track changes.	RCMA notified YMAC 19/08/2020 that their response was taking longer than expected and anticipate a response next week which YMAC acknowledged by email.
YMAC	02/09/2020	Email	Ebony Paskov (YMAC) Ken Aitken (RCMA) Jeremy Brown (YMAC) Andrea Wills (RCMA)	Request for progress on review of revised SYA Petroleum Exploration Heritage Agreement.	RCMA notified YMAC on the 02/09/2020 that their response was being finalised and should be sent through on the 04/09/2020 which was acknowledged by email 02/09/2020. Submission timeframe altered to the 08/09/2020 on the 04/09/2020.
YMAC	07/09/2020	Email	Ken Aitken (RCMA) Ebony Paskov (YMAC) Jeremy Brown (YMAC) Andrea Wills (RCMA)	RCMA sent through a revised Cultural Heritage Survey Agreement for YMAC review and amendment.	
YMAC	17/09/2020	Email	Ken Aitken (RCMA) Jeremy Brown (YMAC) Ebony Paskov (YMAC) Andrea Wills (RCMA)	YMAC sent through a revised Cultural Heritage Survey Agreement for RCMA to review prior to the Southern Yamatji Meeting on the 07/10/2020.	Ken acknowledge receipt of the document via email.

Stakeholder	Date	Type of Consultation	People Involved	Summary of Discussions	Outcomes of Consultation
			Callum Forsey (YMAC) Philippa Hunter (YMAC)		
YMAC	24/09/2020	Email	Ken Aitken (RCMA) Jeremy Brown (YMAC) Ebony Paskov (YMAC) Andrea Wills (RCMA) Callum Forsey (YMAC) Philippa Hunter (YMAC)	RCMA sent back a revised draft accepting the majority of YMAC's amendments except for clause 13A.	Jeremy acknowledged receipt of the document and stated that his initial impression was that the amendment to clause 13A captures what YMAC are trying to convey.
YMAC	12/10/2020	Email	Jeremy Brown (YMAC) Ken Aitken (RCMA) Ebony Paskov (YMAC) Andrea Wills (RCMA) Callum Forsey (YMAC) Philippa Hunter (YMAC)	YMAC advice that cultural heritage survey agreement went to the Southern Yamatji working group who have a few further minor amendments to the agreement.	RCMA to review the amendments to the agreement.
YMAC	21/10/2020	Email	Jeremy Brown (YMAC) Ken Aitken (RCMA) Ebony Paskov (YMAC) Andrea Wills (RCMA) Callum Forsey (YMAC) Philippa Hunter (YMAC)	YMAC flagging to RCMA that the Southern Yamatji claim will end once the Yamatji Nation Indigenous Land Use Agreement is registered (26/10/2020). It is not anticipated that this will represent any issues for the agreement or the survey.	
YMAC	28/10/2020	Email	Jeremy Brown (YMAC) Ken Aitken (RCMA) Ebony Paskov (YMAC) Andrea Wills (RCMA) Callum Forsey (YMAC) Philippa Hunter (YMAC)	RCMA providing updated draft following CJV review of heritage survey agreement.	YMAC provided feedback by phone and by email 29/10/2020 that with the exception of the report preparation period, YMAC consider the drafting of the agreement substantially completed. RMCA agreed to a period of 20 business days.
YMAC	03/11/2020	Email	Jeremy Brown (YMAC) Ken Aitken (RCMA) Ebony Paskov (YMAC) Andrea Wills (RCMA) Callum Forsey (YMAC) Philippa Hunter (YMAC)	YMAC advised that there is a legal issue with YMAC's role / capacity to act as agent for Southern Yamatji now that the claim has ended.	
YMAC	20/11/2020	Phone & Email	Jeremy Brown (YMAC) Ken Aitken (RCMA)	YMAC advised that the survey agreement could not be executed. It is unlikely that this agreement would be able to be executed until January 2021. RCMA have the option to progress the matter through the Yamatji Southern Regional Corporation.	
YSRC	23/11/2020	Phone	Andrea Wills (RCMA) Glenda Jackmarra (YSRC)	RCMA introduced who they were and that they had gotten her contact details from Terra Rosa as RCMA intend to undertake an on-ground heritage survey. YSRC instructed RCMA to send an introductory email to her.	RCMA to send an introductory email to YSRC. Email sent 23/11/2020.
YSRC	26/11/2020	Email	Danial Puletama (S&S) Andrea Wills (RCMA) Glenda Jackamarra (YSRC)	YSRC had advised S&S that RCMA wanted to undertake an on-ground heritage survey. S&S provided advice as to how to get an agreement in place. S&S also requested a project information package.	RCMA emailed S&S the YMAC agreement and requested S&S to call RCMA to discuss.
YSRC	27/11/2020	Phone	Danial Puletama (S&S) Andrea Wills (RCMA)	RCMA and S&S discussed the existing YMAC agreement and its suitability. S&S were confident it was suitable. RCMA requested clarification on the parties to be named in the agreement.	S&S responded by email on 30/11/2020 with the names of the parties to be named in the agreement and instructions on whom to send the signed agreement.
YSRC	03/12/2020	Email	Andrea Wills (RCMA) Danial Puletama (S&S) Glenda Jackamarra (YSRC) Paul Case (YSRC) Ken Aitken (RCMA)	RCMA forwarded a copy of the signed heritage survey agreement as discussed with S&S on 27/11/2020 for consideration by YSRC on 07/12/2020.	Email receipt confirmation received from S&S 06/12/2020.
YSRC	15/12/2020	Email	Andrea Wills (RCMA) Danial Puletama (S&S)	RCMA enquiry as to the progress of the meeting on the 07/12/2020.	S&S advised that it was agreed to sign the agreement and to get it to RCMA as soon as possible.

Stakeholder	Date	Type of Consultation	People Involved	Summary of Discussions	Outcomes of Consultation
YSRC	22/12/2020	Email	Andrea Wills (RCMA) Danial Puletama (S&S)	RCMA enquiry as to how to kick off the heritage survey. S&S requested by email a heritage survey request 04/01/2021 and provided a template 05/01/2020.	RCMA returned the completed heritage survey request form with attachments and .shp files. It was noted that RCMA had not received a copy of the signed agreement so the agreement # on the request form was left blank.
YSRC	07/01/2021	Email / Phone	Danial Puletama (S&S) Andrea Wills (RCMA)	S&S provided a cost estimate for the heritage survey and proposed Tuesday 12/01/2021 for the survey. RCMA spoke to S&S to discuss details of the survey and arrange a last minute confirmation on Monday morning based on the fire weather bans however the forecast looks good.	RCMA provided a layout showing directions to meet at Jingemia.
YSRC	11/01/2021	Phone	Andrea Wills (RCMA) Danial Puletama (S&S)	Confirmation that the fire ban status looks favorable for us to undertake a survey tomorrow.	Meet at Jingemia at 8:30am
YSRC	12/01/2021	Email	Allan Wedderburn (RS) Andrea Wills (RCMA) Ken Aitken (RCMA) Danial Puletama (S&S) Carol Martin (YSRC) Del Whitby (YSRC) Shirley McPherson (YSRC) Paul Case (YSRC) Roxanne Lines (YSRC)	Provision of signed heritage agreement for Cervantes 1 Project.	RCMA confirmed receipt of heritage agreement 14/01/2021.
YSRC	12/01/2021	Site Visit	Andrea Wills (RCMA) Allan Lenane (Lenanes) Daniel Puletama (S&S) Phil Czerwinski (S&S) Michael Taylor F. Taylor Karen Whitby Darren Callow Jai Taylor Kirk Taylor	S&S Anthropologist, Archaeologist and 6 elders undertook a heritage survey over the Cervantes 1 Project Area. Personnel walked the entire area and made observations before providing initial recommendations for a follow up report.	Daniel Puletama to coordinate the compilation of a heritage survey report.
YSRC	12/02/2021	Phone	Andrea Wills (RCMA) Danial Puletama (S&S)	RCMA enquiry as to progress of the Heritage Survey Report. Report has been delayed sign off by the board due to corona virus lock down.	S&S will send through the unratiified version to RCMA in the meantime.
YSRC	16/03/2021	Email and Phone	Andrea Wills (RCMA) Danial Puletama (S&S)	RCMA enquiry as to when the cultural heritage report would be sent through. S&S notified they had sent through on 24/02/2021. RCMA checked and found some of the emails in junk folder.	S&S to send remainder of files through via email.
YSRC	18/03/2021	Email	Andrea Wills (RCMA) Danial Puletama (S&S)	RCMA raised an issue with the boundary presented in the Heritage Survey Report did not match where was physically traversed during the survey or match the proposed project footprint. This could be a relic of the original .shp file provided by RCMA.	S&S reviewed the discrepancy 19/03/2021 and reissued the survey report 03/05/2021. Nine more spots were identified, these were reviewed and the survey report reissued 07/05/2021.
YSRC	07/05/2021	Email	Andrea Wills (RCMA) Danial Puletama (S&S)	RCMA seeking advice in regard to the Heritage Survey Report recommendation for a 'Site Discovery Procedure'. S&S provided a copy.	
YSRC	24/11/2021	Phone	Andrea Wills (RCMA) Danial Puletama (S&S)	RCMA notifying YSRC that they anticipate preparing the Cervantes 1 site mid January 2022. S&S advised that personnel are back on the ground 2 nd January so this will be ok. RCMA to contact S&S in December with an Activity Notice.	RCMA to develop and forward activity notice to S&S.
Wattandee Tribe	05/07/2021	Email	Chris Newport (RCMA) Thomas Cameron (Wattandee Tribal Elder)	Email introduction to a tribe from Mingenew interested in industry activities during the EPA Report public appeal period.	RCMA thanked Thomas for the introduction and welcome a meeting with the Wattandee Tribe.
Landowners	10/01/2022	Letter	Six Local Landowners Ken Aitken (RCMA)	Letter to six local landowners north of the Beekeepers Nature Reserve fire break (4km north of Cervantes 1 well site) notifying them of upcoming civils activities and proposed drilling timing.	The landowner with a residence on their property had their letter hand delivered on 12/01/2022. The project was discussed and the landowner was pleased that the overgrown firebreak was being maintained. The landowner noted many years ago noise issues with the Jingemia Facility.