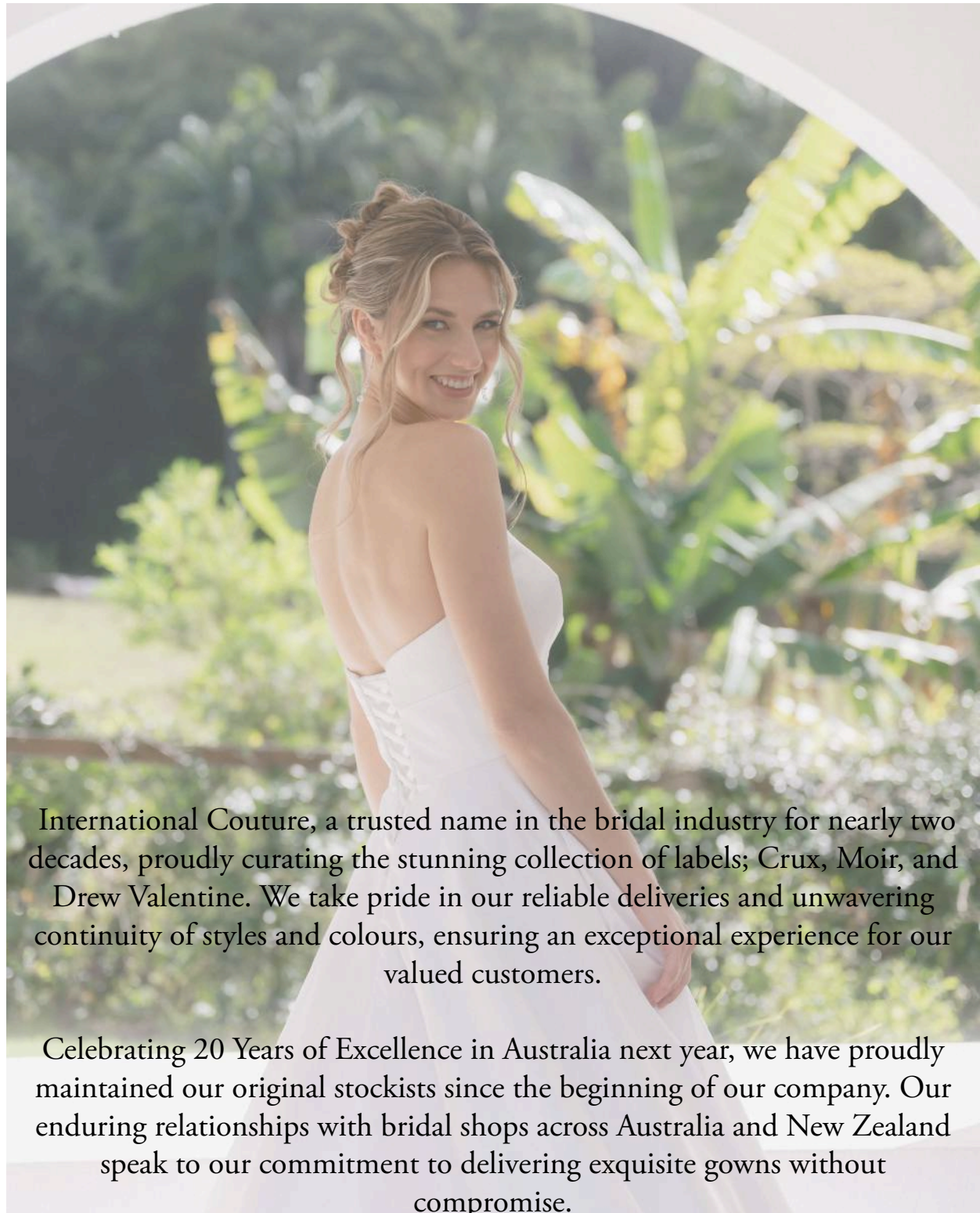




INTERNATIONAL COUTURE

COLLECTIONS



International Couture, a trusted name in the bridal industry for nearly two decades, proudly curating the stunning collection of labels; Crux, Moir, and Drew Valentine. We take pride in our reliable deliveries and unwavering continuity of styles and colours, ensuring an exceptional experience for our valued customers.

Celebrating 20 Years of Excellence in Australia next year, we have proudly maintained our original stockists since the beginning of our company. Our enduring relationships with bridal shops across Australia and New Zealand speak to our commitment to delivering exquisite gowns without compromise.

Julie Waterston

Creative Director

Meet Julie, one of the driving forces behind International Couture. With an impressive background in the bridal industry since 1988, her passion and expertise have been instrumental in shaping the company's success.

Julie started her career in bridal initially within design and manufacturing. She opened her first retail store in Scotland in 1993, and was an Executive Council Member of the RBA during the late 90's. Since emigrating to Australia in 2004 she has been working on design and product development for all our collections. With over three decades experience in the industry, Julie's knowledge from manufacturing and retail to wholesale, allows her to understand every aspect of the bridal business. Julie's wealth of knowledge bring forth the incredible designs that shape the essence of the brand.



Daniel Morey

Sales Director

At International Couture, our commitment to exceptional customer care is embodied by Daniel, who goes the extra mile for our stores and customers. You'll often find him on the road, personally visiting each store to nurture rapport and ensure that our customers receive the utmost attention and support.

Having ventured into the bridal and menswear realm, Dan's understanding of fashion trends and customer needs grew exponentially. His experience as a Rep in the UK further enhanced his knowledge of the industry, allowing him to forge lasting relationships with designers and partners alike.

Drew Morey

Operations Manager

Born into the industry, Drew has extensive knowledge of the bridal trade. After working 3 years in bridal retail it was time for Drew to transfer her knowledge into the design and manufacturing side of the industry.

Drew is a helpful and positive addition to any team, always ready to lend a hand and provide friendly customer service. Drew focuses on running the operational side, but can seen out on the road too.



Deliveries

Our standard delivery time for all gowns is 12-14 weeks. However, we do offer our retailers a rush cut service which is 6-8 weeks delivery, or in some circumstances

an emergency cut may be offered, which is 6 weeks and under. These services do incur an extra charge. Not only do we offer the best quality and delivery, but also peace of mind from our experienced team.

Colours and Sizes

Drew Valentine Bridal is available from a Size 4 to a Size 30, and in most cases available in white, ivory and champagne.

Trade Shows

International Couture have been exhibiting at the Australian bi-annual trade shows since 2004. They also play a large role in the organisation and co-ordination of the shows. Not only will you see us at the shows, but you will often see Dan on the road, taking the time to personally visit our stores.

DREW VALENTINE



DV
DREW VALENTINE

Slinky slipper satin with strapless
seckline, zip up back with faux
buttons to end of train.



DV24022

Available in sizes 0-30
Available in ivory only.

Slipper satin bridal gown with flattering
ruched bodice, puff sleeve, zip up back, and faux buttons



DV24023

Available in sizes 0-30

Available in ivory only.

Satin bridal gown with classic square style neckline, zip up back, and faux buttons



DV24024

Available in sizes 0-30

Available in white, ivory, and champagne.

Satin bridal gown with ruched bodice,
one shoulder with bow design, zip up back, faux buttons
to end of train



DV24025

Available in sizes 0-30

Available in white, ivory, and champagne.

Mikado a-line gown, stunning beaded neckline detail, rounded drop waist*, zip up back and faux buttons



DV24026
Available in sizes 0-30
Available in ivory only.

DV24027

Available in sizes 0-30
Available in ivory only.



Fitted crepe skirt, unique tulle cross over bodice and off the shoulder straps with zip up back

DV24029

Available in sizes 0-30
Available in ivory only.



Lace bodice with classic square neck design, a-line crepe skirt with zip up back

DV24028

Available in sizes 0-30
Available in ivory only.



Lace bodice with v neck line, attached tulle bow straps, with tulle skirt and zip up back

Fitted lace gown with exposed boning style,
deep v neckline, and zip up back



DV24030

Available in sizes 0-30
Available in ivory only.



DV24031

Available in sizes 0-30
Available in ivory only.

Lace and tulle wedding gown with
beautiful floral lace, one shoulder,
and lace train detail.



DV24032 Available in sizes 0-30
Available in ivory only.



Unlined beaded lace, fitted crepe skirt, zip up back
and beaded lace detail straps.



DV24033

Available in sizes 0-30
Available in ivory only.



stretch crepe gown with exposed
boning, cowl neck, drop waist and zip
up back



DV24034

Available in sizes 0-30
Available in ivory only.



Strapless mikado gown with
rouched bodice, and
detachable puff sleeve

Satin bridal gown, with flattering thick waist band, pointed sweetheart neckline, lace up back, and pockets.



CW554

Available in sizes 0-30
Available in white, ivory, and champagne.

Mikado bridal gown, with flattering thick waist band, zip up back, faux buttons and pockets.



DV23010
Available in sizes 0-30
Available in ivory only.



DV24002



DV24004



DV24013



DV24004



DV24002

A woman with blonde hair in a bun, wearing a white sleeveless gown with a long train, stands looking out a large window. The view outside shows a garden with greenery and yellow flowers. The scene is softly lit, creating a romantic and elegant atmosphere.

Contact Us

To become a Crux, Moir, or Drew Valentine stockist simply reach out to the International Couture team.

Our collections are exclusively available to distanced stores, preserving the uniqueness of our gowns and avoiding market saturation.

www.intcouture.com

0431 910 999

enquires@intcouture.com

@int_couture