



# innovo

**Innovating for a  
better built tomorrow**

[innovogroup.com](https://innovogroup.com)

# Table of Contents

innovo

Who We Are 03

Our Commitments 09

What We Do 14

Our Projects 18

Our Legacy 53

Embracing Partnerships 63





**Who We Are**

**innovo**



# About Us

Innovo is a fully integrated global business revolutionising the built environment landscape.

Headquartered in the United Kingdom and spanning four continents, with a team of highly experienced and dedicated people, Innovo provides groundbreaking solutions by assimilating **cutting-edge technology** and **innovative sustainability practices**.

Innovo operates across **diverse industries of the built environment**, ranging from construction to real estate development, project financing and management, procurement and strategic investments.

Maintaining a prominent reputation rooted in the heritage of the ASGC Group, a renowned construction conglomerate for over 35 years, Innovo **inherited** its **legacy** in upholding the benchmark of impeccable project delivery and exceptional health and safety records.

## Our Vision

To provide the world's best construction and real estate services for our clients, enabling a more sustainable future and a better way of life for the communities in the built environments we help to create.

## Our Mission

To be pioneers in the built environment, using cutting-edge technology to create real social value and protect the environment.





# Our Board of Directors



**Rt. Hon. Lord Hammond** CBE, is a non-executive director and Chairman of the Board at Innovo. He has a distinguished career in British politics as a Member of Parliament from 1997 to 2019.

**Rt Hon Lord Philip Hammond**  
Chairman of the Board

**Bishoy Azmy**, founder and CEO of Innovo, and former CEO of ASGC Group, a globally acclaimed construction conglomerate. Bishoy is a passionate advocate of responsible construction and the advantages of leveraging technology and innovation.



**Bishoy Azmy**  
Founder & CEO



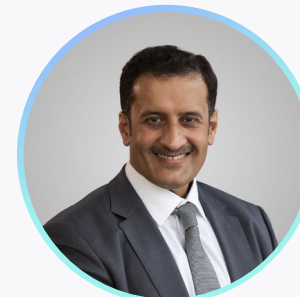
**Mei Chen**  
Independent/Non-Executive Board Member



**Juergen Maier CBE**  
Independent/Non-Executive Board Member



**Neil Martin**  
Independent/Non-Executive Board Member



**Abdulaziz Bin Shafar**  
Board Member



**Tom Tildesley**  
Chief Financial Officer



**Kate Teh**  
General Counsel & Company Secretary

# Our Leadership Team

---



**Bishoy Azmy**  
Founder & CEO,  
Innovo Group



**Mariam Azmy**  
Chief People Officer,  
Innovo Group



**Raouf Ezzat**  
CEO, Innovo  
International



**Sameh Fam**  
CEO, Innovo Build



**Paul Woodman**  
CEO, Innovo Projects



**Ibrahim Salib**  
CEO, Maplelands



**Tom Tildesley**  
Chief Financial Officer,  
Innovo Group



**Roger Wahl**  
Chief Technology  
Officer, Innovo Group



**Kate Teh**  
General Counsel &  
Company Secretary



**Fawaz Goth**  
Managing Director,  
Innovo KSA



**Arsany Thabet**  
Managing Director,  
Innovo Solutions



**Ahmed Saleh**  
Managing Director,  
Innovo Ventures



**Mohamad Gamal**  
Managing Director,  
Innovo Build Egypt



**Khalid Sharbatly**  
Managing Director,  
Innovo MEP



**Rayan El Eid**  
Managing Director,  
Innovo Roads  
Infrastructure & Marine  
Works

# Overview of Innovo

## Construction

As a general contractor, we lead innovation in the built environment by addressing complex engineering challenges, prioritising sustainability, and incorporating groundbreaking technology.

- **MEP 2.0**

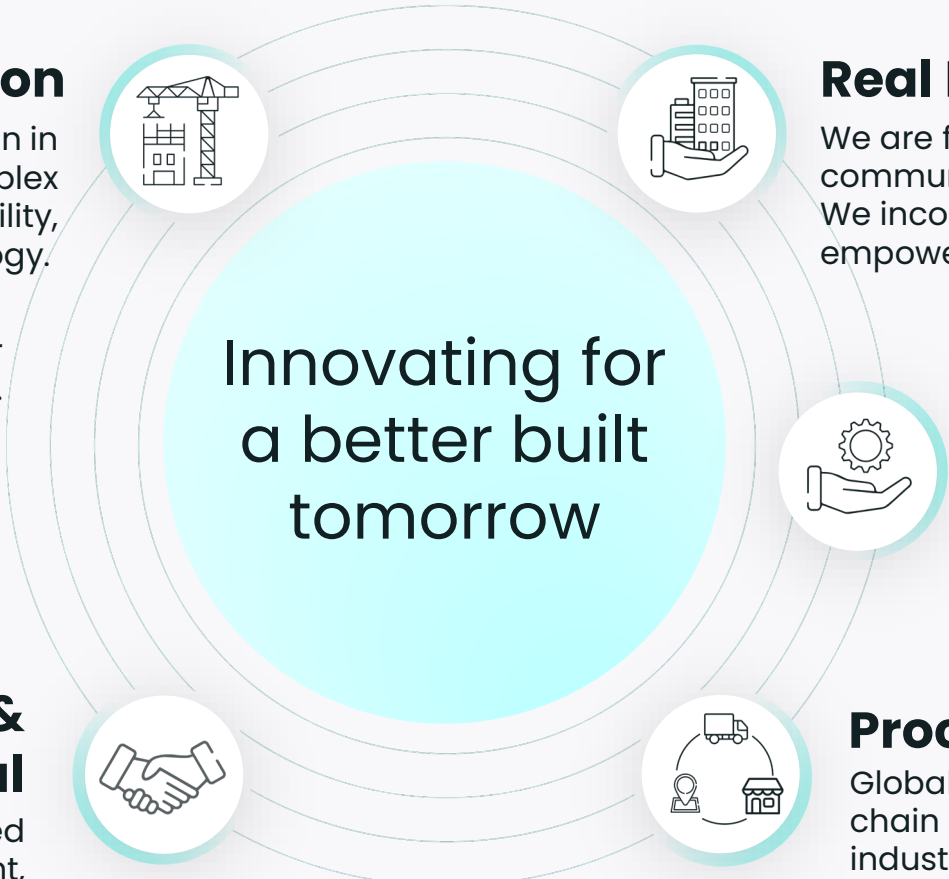
Providing industry leading MEP services for all types of construction projects.

- **Infrastructure, Roads & Marine Works**

Unrivalled experience spanning critical infrastructure projects from wastewater and desalination to transportation and energy.

## Investment & Venture Capital

Subsidising exceptional tech-enabled businesses adjacent to the built environment, with the potential to create a meaningful and sustainable impact on society.



**Innovating for  
a better built  
tomorrow**

## Real Estate Development

We are focused on building sustainable and inclusive communities that improve everyday life. We incorporate smart home automation which empowers residents with advanced features.

## Capital Projects & Project Management

Organising export credit finance and project management solutions for urban developments and critical infrastructure projects .

## Procurement & Distribution

Global procurement solutions and supply chain management for commercial, industrial and residential projects.

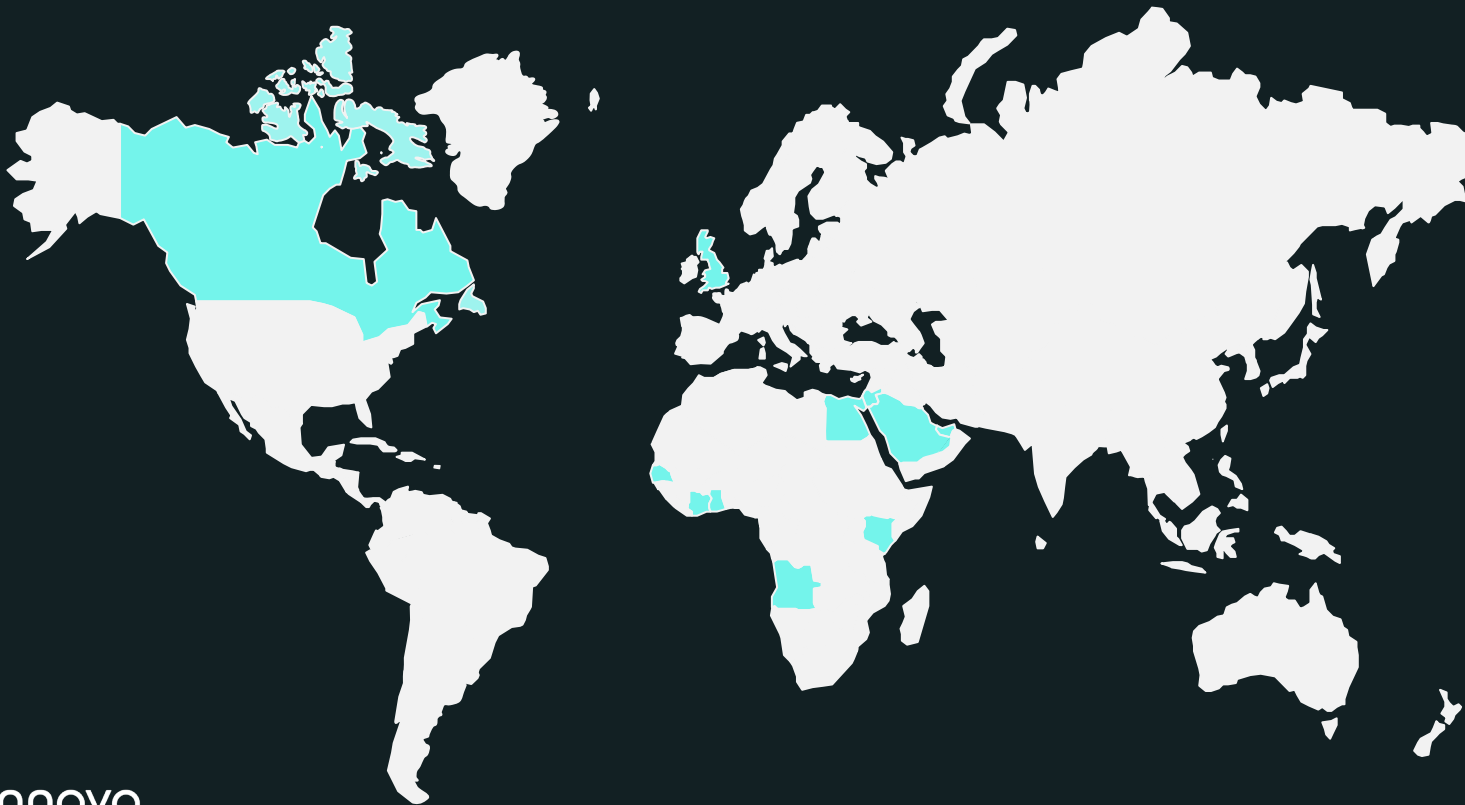


# Global Reach

UK, Europe  
UAE, Asia  
Egypt, Africa  
Canada, North America

KSA, Asia  
Jordan, Asia  
Kenya, Africa  
Angola, Africa

Ghana, Africa  
Senegal, Africa  
Ivory Coast, Africa



5

Industries

4

Continents

5000+

People

70+

Major  
Clients

100+ £1 Billion+

Ongoing  
Projects

Operating  
Revenue\*

\*Including ASGC



# **Our Commitments**

**innovo**

# Our Commitments

---



## Embracing Innovative Technology

We actively seek out, develop and deploy smart tech that enables us to complete projects faster and more proficiently with sustainable and cost-effective building methods.

## Fostering Sustainability

Focused on developing strong, sustainable, welcoming communities that enhance everyday life.

## Cultivating a Healthy Work Culture

We prioritise the well-being of our employees, customers and communities by embracing proactive safety measures and ensuring the highest standards within the industry.

**We Are  
Committed**

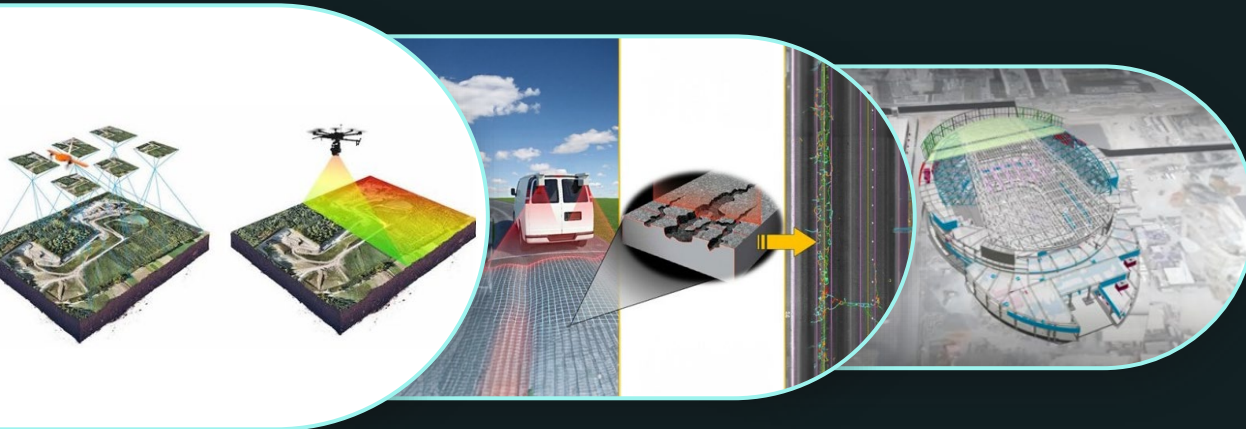


# Innovation & Technology

Innovo utilizes state-of-the-art technology, seamlessly integrating innovation into every project we undertake, redefining industry norms, and exceeding client expectations.

We are constantly on the lookout for new, smart tech that not only makes clients' projects faster and more efficient, but also enables more sustainable, safe, and cost-effective building methods.

Some of the smart tech we currently use includes:



Photogrammetric Drone

Asphalt Assessment  
Laser Crack System

Virtual Design &  
Construction (VDC):  
Coca-Cola Arena 4D  
Simulation



**BIM Models** enable us to digitally manage project data, improve coordination and communication, mitigate risk, and reduce cost.

**IoT** and connected sensors to remotely monitor sites and project performance, including wearable sensors that can capture real-time data on operating conditions, productivity levels, and the health and safety of workers.

## Digital Twin

digital replicas of physical entities – that enable us to correct design inaccuracies and prevent operational and safety risks.

**AI-powered** project monitoring and computer visualizations, enable us to predict and prevent operational, environmental, and safety issues.

AI also enables us to better monitor inventory from point of origin to delivery.

# Sustainability

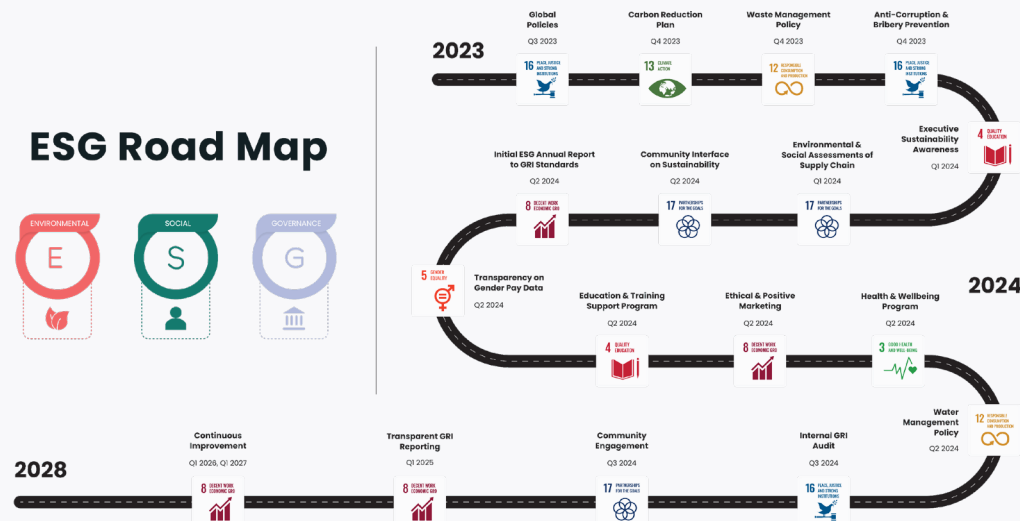
## Environmental, Social and Governance

Operating a **sustainable business model** is core to Innovo's values. We are committed to sustainability in all aspects of our operations and have developed a robust ESG strategy in alignment with the United Nations Sustainable Development Goals.

From waste reduction and recycling to sustainable procurement, we set ambitious targets and track our progress. We carefully select reputable partners to build a transparent and sustainable supply chain. As a result, many of our completed projects are LEED-certified.

We are a purpose-driven business dedicated to making **a positive impact on the communities** we serve. Through affiliations with educational establishments, we provide students with internships and work experience, empowering them to develop their skills and contribute to special projects. We strive to improve the lives of those we work with, fostering long-lasting change and creating a better future for all.

To ensure transparency in ESG and align with global standards, we have created an **ESG roadmap** outlining our targets to reach by 2028.



## Race to Zero

Innovo is contributing towards the United Nations **Race to Zero Campaign** through **Business Declares**. We strive to lead by example and inspire others to embrace sustainable practices, ultimately contributing to the global goal of achieving net zero emissions by 2050.

## Carbon Footprint Reduction

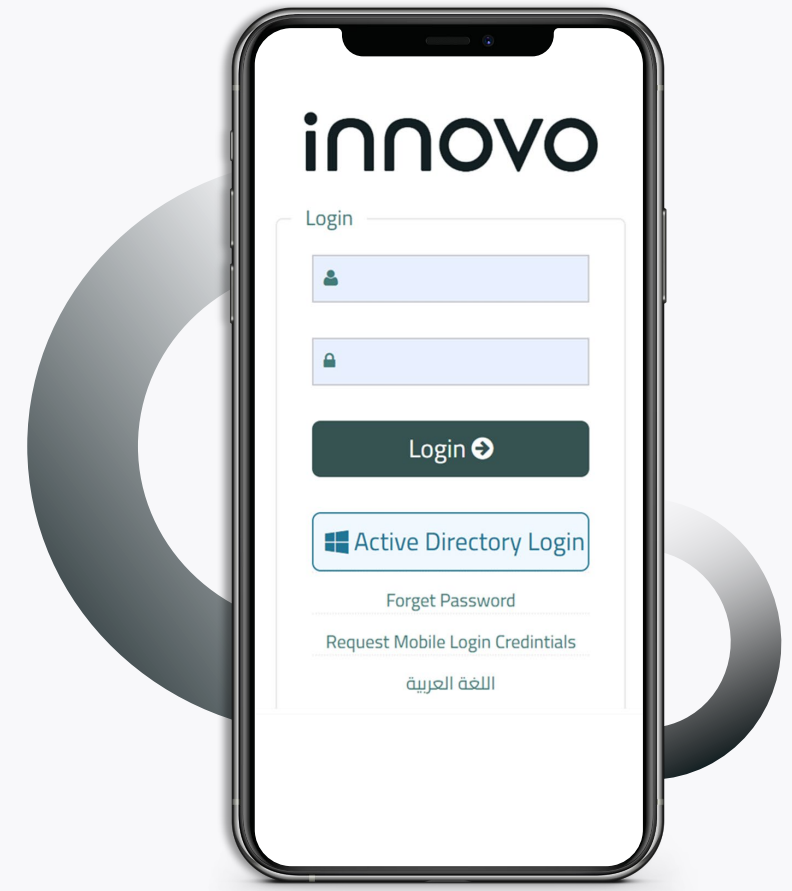
We stand as a leading force in carbon reduction efforts, aligning with global emission management strategies and recognising the pressing imperative of climate change.

# Health, Safety & Environment

At Innovo, the health, safety, and wellbeing of our employees and all those affected by our activities, along with the communities in which we operate, is fundamental to our business.

As a proud **member of the British Safety Council**, comprehensive health, safety, and environmental policies and procedures have been implemented throughout our operations to mitigate risk, prevent injuries and incidents of ill health, as well as ensuring the protection of the surrounding environment.

Our **tailored HSE management system** is accredited to international standards (ISO 14001 and ISO 45001). Additionally, Innovo operates its own custom-made HSE software “In-safe” that allows HSE performance tools to be accessible to everyone via a mobile app.







**What We Do**

**innovo**

# Construction

## Building Beyond Boundaries

### General Contracting

With over 35 years at the forefront of the construction industry as a general contractor, we develop innovative solutions to complex engineering challenges, emphasize sustainability, and integrate pioneering technology such as augmented reality and modular developments.

We combine exceptional design expertise with the superior build quality and efficient performance that underpin our asset-light approach to construction.

Our projects range from the design and construction of high-rise towers, residential developments, commercial centres and community-focused projects, such as hospitals, schools and transportation hubs.



### MEP 2.0

Innovo is at the leading edge of delivering advanced MEP solutions, catering to a diverse range of construction projects. We specialize in design, value engineering, prefabrication, and installation, integrating cutting-edge technologies such as BIM, Trimble 3D Laser Scan, VR/AR, HoloBuilder.

### Infrastructure, Roads & Marine Works

Innovo excels in delivering critical Infrastructure across sectors like wastewater, renewable energy, and transportation, utilising advanced and safe construction methods.



## Real Estate Development

### Reimagining Community Development

Specialising in residential and mixed-use developments, Innovo champions community well-being and environmental stewardship. At our core, we aspire to craft spaces that allow for seamless living within sustainable, lifelong communities. This vision is brought to life by integrating cutting-edge technologies and intelligent systems, ensuring state-of-the-art designs with impeccable green credentials.

From initial land acquisition to after-sales services, our holistic approach covers every aspect of property development. Driven by innovation, integrity, and inclusivity, our hallmark developments are prominent in Canada, the UAE, Egypt and the UK. By constantly seeking to harmonise ingenuity, sustainability, and community in our projects, Innovo is setting new global standards, and transforming communities around the world.

## Capital Projects

### Export Credit Solutions and Project Management

Innovo holds expertise in offering export credit financing solutions, primarily focusing on developing and emerging markets in Africa and the Middle East. With a distinguished track record with UK Export Finance and active partnerships with various ECAs in the Middle East and Europe, we leverage extensive resources and networks to deliver tailored and comprehensive project management and financing solutions to our clients.

Demonstrating outstanding record in deal structuring, international procurement, and liaising with banks and lenders, Innovo has seamlessly delivered over 50 critical and social infrastructure projects in manifold sectors, including healthcare, education, hospitality and leisure, commercial, power, water, roads, airports, agriculture and industrial.

We provide bespoke management solutions to meet the requirements of any given project. Our proficiency in environmental and social monitoring, reporting, and commercial management ensures the flawless execution and sustainable impact of each project.



## Procurement & Distribution

### Global Supply Chain Mastery

Innovo excels in providing comprehensive procurement solutions for an array of global projects, spanning commercial, industrial, residential, and infrastructure sectors. We act as a pivotal link between manufacturers and clients, supplying a diverse range of building materials and fit-out solutions, from cement to sophisticated lighting and sanitaryware.

Leveraging established relationships with premier global suppliers, we streamline construction procurement cycles, expedite purchasing processes, and empower clients with insightful decision-making on their acquisitions. Our services extend to supply chain management for a multitude of projects, including prestigious developments and critical infrastructure, ensuring efficiency and excellence in every endeavour.

## Investment & Venture Capital

### Bridging Business and Benefaction

Innovo invests in pioneering tech-enabled businesses poised for elevated growth in the built environment, focusing on enhancing project outcomes, community well-being, and environmental sustainability.

Our mission is to identify and nurture early-stage technology disruptors, offering support in business development, governance, and operations. We provide our partners with collaboration opportunities on innovative projects and access to our extensive network of industry peers, big tech, academia, and government bodies, all committed to fostering sustainable, profitable, and socially beneficial building practices.

# **Our Projects**

**innovo**

## Six Senses

### Description

A LEED-certified 61-room Dubai luxury hotel and 162 branded residences along a private stretch of beach on Palm Jumeirah's West Crescent.

Client	Location	Value
Select Group	Dubai, UAE	GBP 280 Million





# Saadiyat Lagoons

## Description

Construction of Saadiyat Lagoons Package 3 master community, comprising 975 sustainably designed villas spread over 615,000 m<sup>2</sup>. The project is strategically located in the Emirates of Abu Dhabi nestled amongst lush greenery and offering a serene lifestyle to the residents. Innovo's scope of works includes civil, infrastructure, soft & hard landscaping, MEP and associated interior finishes.

### Client

Aldar Properties

### Location

Abu Dhabi, UAE

### Value

GBP 740 Million





## St. Regis Residences

### Description

Construction of the St. Regis Residences, located in the Opera District, Downtown Dubai, comprising two sleek and modern art-deco inspired towers, rising to 262m and 171m respectively with a connecting platform. The residences are the epitome of modern luxury living.

Client	Location	Value
Emaar	Dubai, UAE	GBP 300 Million

EMAAR





# Beach Mansion

## Description

Construction of a high-end beachfront residential development comprising two 37 and 20-story towers connected with a 7-story podium. Beach Mansion encompasses the sophistication of urban cool and the essence of living by the sea.

### Client

Emaar

### Location

Dubai, UAE

### Value

GBP 110 Million

EMAAR



# Louvre Residences

## Description

Construction of three residential buildings with 186 residential units, including retail spaces and community facilities. Louvre Residences is an inclusive community complex connected to the world-famous Louvre Museum in Abu Dhabi.

### Client

Aldar Properties

### Location

Abu Dhabi, UAE

### Value

GBP 175 Million





# Elysian Mansions

## Description

Construction of 94 luxury villas at Elysian Mansions, a prestigious residential waterfront development nestled at the lagoon of Tilal Al Ghaf. This luxury development is inspired by the Elysian Fields of Greek mythology.

### Client

Majid Al Futtaim

### Location

Dubai, UAE

### Value

GBP 235 Million





# ORLA by Omniyat

## Description

An iconic luxury residential development on Palm Jumeirah with a unique connection to the sea. Situated on a 29,000 sq m. beachfront plot at the apex of the Palm's crescent, it comprises three apartment towers with 89 keys, a spa and beach club, and 270-degree views of Dubai's skyline. Orla is set to achieve the LEED Gold certification.

### Client

Omniyat

### Location

Dubai, UAE

### Value

GBP 200 Million

OMNIYAT



# Ava at Palm Jumeirah

## Description

A residential enclave that is the epitome of luxury, inviting residents to indulge in an exclusive lifestyle amidst the iconic Palm Jumeirah. Ava includes 17 ultra-luxury and exclusive residential units with expansive 270-degree views across the city.

**Client**  
Omniyat

**Location**  
Dubai, UAE

**Value**  
GBP 70 Million

OMNIYAT





# Jebel Ali Village Villas

## Description

Construction of 278 Villas 4 & 5 Bedrooms and Infrastructure works including roads, utility networks, signage and wayfinding. Jebel Ali Village is a brand new upscale residential development offering a luxurious living experience.

**Client**  
Nakheel

**Location**  
Dubai, UAE

**Value**  
GBP 180 Million

**NAKHEEL**





Harmony – Tilal Al Ghaf



Description

Harmony I, Harmony II and Harmony III are a master community development comprising 750 townhouses and villas. The development is strategically connected to major road networks in Dubai and offers a resort-style experience.

Client	Location	Value
Majid Al Futtaim	Dubai, UAE	GBP 300 Million



Villanova La Rosa



Description

Development of Phases 3, 4, 5 & 6 of the residential community includes constructing 872 townhouses spread across four phases, along with ample green spaces and contemporary pool houses.

Client	Location	Value
North Dubailand Projects	Dubai, UAE	GBP 130 Million





# Majestic Vistas

## Description

A collection of 40 Lamborghini-branded villas in the Dubai Hills Estate with a premium golf course view. The design of the villas was inspired by Automobili Lamborghini, with Lamborghini patterns used throughout the architecture, interiors, and landscaping of the villas.

<b>Client</b> Emaar	<b>Location</b> Dubai, UAE	<b>Value</b> GBP 65 Million
------------------------	-------------------------------	--------------------------------

EMAAR



# Bvlgari Ocean Mansions

## Description

Design and construction of 8 ultra-luxury villas, including the associated infrastructure, marine, landscaping and MEP works.

The villas sit atop the turquoise waters of the Arabian Sea and gracefully join the northern shores of Jumeirah Bay Island in Dubai.

<b>Client</b> Meraas	<b>Location</b> Dubai, UAE	<b>Value</b> GBP 60 Million
-------------------------	-------------------------------	--------------------------------





# New Garden City

## Description

Construction of 75 buildings including excavation, infrastructure, concrete skeleton, Finishes & MEP works.

### Client

New Urban  
Communities  
Authority

### Location

New  
Administrative  
Capital, Egypt

### Value

GBP 250 Million





# Downtown New Alamein - Phase 2

## Description

Construction of 24 Residential buildings including excavation, infrastructure, concrete skeleton, Finishes & MEP works.

Client	Location	Value
New Urban Communities Authority	New Alamein City, Egypt	GBP 170 Million



هيئة المجتمعات العمرانية





# Magra Al Oyouun

## Description

Construction of 60 new Residential buildings.

### Client

New Urban  
Communities  
Authority

### Location

New Administrative  
Capital, Egypt

### Value

GBP 50 Million



هيئة المجتمعات العمرانية





# ETAPA Square Project

## Description

Multi-purpose mixed-use development with various elements such as shopping mall, medical centre, business & commercial centre.

Client	Location	Value
City Edge Developments	Sheikh Zayed City, Egypt	GBP 60 Million





New Administrative Capital  
Infrastructure Works



Description

Infrastructure works, including Water, Irrigation & Sewage Networks, Valve Chambers, Transformers, Distributors, MV & LV Networks

Client	Location	Value
New Urban Communities Authority	New Administrative Capital, Egypt	GBP 85 Million



Water Body Facility at  
Saadiyat Island



Description

Construction of the Water Feature Canal is a manmade lake and fountains that wrap around three sides of the Sheikh Zayed National Museum

Client	Location	Value
Aldar Properties	Abu Dhabi, UAE	GBP 29 Million





## El Dabaa Agricultural Land Reclamation



### Description

It includes an integrated system of irrigation and agricultural mechanisms using the latest equipment and techniques, it will also include thousands of center pivot irrigation systems.

Client	Location	Value
National Company of Egypt	Dabaa – North Coast, Egypt	GBP 80 Million



## Toshka Canal



### Description

Involving in first and second phases of the project, construction of a 5km canal that serves as a lifeline for efficient water distribution throughout agricultural lands. We established a well-connected road network, facilitating smooth transportation of goods within the area.

Client	Location	Value
National Service Projects Organization	Toshka, Egypt	GBP 67 Million





# Alia Developments Project

## Description

A prestigious mixed-use development in the heart of the Dubai International Financial Centre, catering to the ever-growing market demand for ultra-luxury residences and top-tier offices in Dubai.

The project involves the development of a Class A office component, a hotel with branded residences, as well as a series of retail and F&B locations to complete the experience.

## Location

Dubai, UAE





# Autograph by Park St.

## Description

Comprising residential, office, and retail spaces, the project also boasts an on-site hotel, offering enhanced convenience to both residents and guests. In addition to the serviced apartments, the project features an office building, providing a range of benefits for businesses and employees. The surrounding commercial and retail projects like Park St. East further add to the appeal of the project, providing a vibrant atmosphere and a wide range of dining, shopping, and entertainment options.

## Location

Sheikh Zayed City, Egypt



### The Verge

#### Description

10-storey, 203-suite mid-rise condominium, and a 17-storey, 341-suite high-rise condominium, each with its own distinct lobby and expansive indoor and outdoor amenity space.

Location | Etobicoke, Canada



### Dufferin Plaza

#### Description

Mixed-use development in the heart of Lawrence Heights with condominium and retail spaces.

Location | Toronto, Canada





### Bronte Gates

#### Description

10-storey mixed-use community providing urban living in Oakville.

Location | Oakville, Ontario, Canada



### The Pickering project

#### Description

A master-planned community in the heart of Pickering comprises nine towers in phase 1 of the development with residential, commercial and retail elements.

Location | Pickering, Ontario, Canada



# Marsa Al Arab

## Description

Graded with 5+ stars, this ultra-lavish waterfront hotel is being designed and built by ASGC. Marsa Al Arab Hotel was constructed on a 21,389 m2 area and consists of 483 keys: 376 hotel rooms, 8 marine suites and 99 residential apartments, and 9 signature villas.

**Client**  
Jumeirah/  
Dubai Holding

**Location**  
Dubai, UAE

**Value**  
GBP 400 Million





## Coca-Cola Arena

### Description

A multi-purpose indoor arena spanning an area of half-a-million square feet seating 17,000 people. Coca-Cola Arena is one of the most technologically advanced arenas in the world, boasting a façade lighting system made up of 4,600 LEDs. The arena is lit up in red to represent the name of the arena, and hosts a jam-packed calendar of concerts, sporting events, festivals and comedy shows.

**Client**  
Meraas/  
Dubai Holding

**Location**  
Dubai, UAE

**Value**  
GBP 235 Million



# The Address Harbour Point

## Description

Two slender 65-storey and 54-storey towers, a luxury hotel, and serviced apartments. The project is strategically located at the tip of the Creek Island and is steps away from the exclusive Dubai Creek Harbour Marina.

**Client**  
Emaar

**Location**  
Dubai, UAE

**Value**  
GBP 255 Million

EMAAR





## 25hours Hotel

### Description

A five-star development located in the Dubai World Trade Centre comprising 434 keys. The hotel boasts a unique concept by Accor (4B+G+9) and is the first and largest 25hours property outside Europe.

**Client**  
DWTC

**Location**  
Dubai, UAE

**Value**  
GBP 140 Million



مركز دبي التجاري العالمي  
DUBAI WORLD TRADE CENTRE



# Capital Projects

## Infrastructure

### PSD Road Programme

**Description**

Programme Special Desenclavement includes design and build of around 100 roads across 1100 km in land in rural areas.

**Client**

L'Agence des Travaux et de Gestion des Routes

**Location**

Senegal, Africa

**Value**

GBP 600 Million



### Benguela Infrastructure

**Description**

Implementation of the design and construction of emergency packages of infrastructure projects in Benguela's Province, Angola

**Client**

Ministry Of Public Works and Spatial Planning

**Location**

Angola, Africa

**Value**

GBP 400 Million



### Kitgum to Kidepo Road

**Description**

The project consists of upgrading of 115.8km of road between Kitgum and Kidepo.

**Client**

Uganda National Road Authority - UNRA

**Location**

North of Uganda, Africa

**Value**

GBP 81 Million





## West Dakar Sanitation Programme

### Description

It forms part of the long-term water sector programme defined by the Government of Senegal with the support of the World Bank. The aim is to improve the health, environmental and socio-sanitary conditions of Senegalese communities.

**Client**  
Ministry of Water  
& Sanitation

**Location**  
Senegal, Africa

**Value**  
GBP 155 Million



## Solar Water Supply

### Description

The installation, commissioning and maintenance of 150 integrated R1 Nano-filtration units with AQtap payment and 12 small town water supply systems.

**Client**  
Aqua Africa Limited  
Ministry of Sanitation &  
Water Resources

**Location**  
Accra,  
Ghana, Africa

**Value**  
GBP 25 Million





## Aqaba Garment Complex

### Description

A garment factory consisting of corporate office, warehouses, factories, centralized cutting unit, printing unit, facilities for workers and staff like accommodation, centralized kitchen, recreation facilities, training center, clinics etc. with a total built up area of 318,071 sqm.

Client	Location	Value
Classic Fashion & Apparel Industry	Aqaba, Jordan	GBP 79 Million



## Eko Atlantic Infrastructure

### Description

The construction of critical infrastructure such as wastewater treatment plant, water treatment plant and power distribution lines within Eko Atlantic city in Lagos.

Client	Location	Value
South Energyx Development	Lagos, Nigeria, Africa	GBP 32 Million





# NAFCO Fire Fighting Equipment

## Description

The project consists of the supply of firefighting and medical equipment including trucks and ambulances to the Government of Senegal.

Client	Location	Value
Ministry of Interior & Public Security	Senegal, Africa	GBP 120 Million



Supported by:   
UK Export Finance

# Capital Projects

## Healthcare

### Mother & Child Hospital

**Description**

The hospital consists of a total of 200 beds and 297 car parking bays.

**Client**  
Ministry of Health,  
Angola

**Location**  
Luanda,  
Angola, Africa

**Value**  
GBP 162 Million



### Cabinda General Hospital

**Description**

The hospital unit has a capacity for 200 beds.

**Client**  
Ministry of Health,  
Angola

**Location**  
Cabinda, Angola,  
Africa

**Value**  
GBP 138 Million



### Burns Hospital

**Description**

250 beds general hospital in Luanda with a specialized department for burns care.

**Client**  
Ministry of Health,  
Angola

**Location**  
Luanda,  
Angola,  
Africa

**Value**  
GBP 128 Million





## Pediatric Hematology Institute

### Description

The hospital consists of a total of 8 beds and 62 car parking bays with a BUA of 11,000 m2.

Client	Location	Value
Ministry of Health, Angola	Luanda, Angola, Africa	GBP 32 Million



## St. Louis Hospital

### Description

A new design, build and fit out project, consisting of a 400 bed Level 4 National Hospital Centre, including 50 beds in a single bedroom wing.

Client	Location	Value
Ministry of Health & the Social Action	Saint Louis, Senegal, Africa	GBP 102 Million





# Cabinda International Airport

## Description

Design and build of an international airport capable of accommodating Boeing 777 as the critical aircraft. The airport will have a 3.5km runway and will include one terminal building, one control tower, fire station and hangars.

Client	Location	Value
Ministry of Transport	Cabinda, Angola, Africa	GBP 248 Million





# 56 Schools in Ivory Coast

## Description

The project consists of design and build of 56 schools across various regions within Ivory Coast. Each middle school comprise construction of several single-story buildings with a total built up area of around 3,400 sqm, and includes an administration block, classrooms blocks, library, infirmary, outdoor sports areas, changing rooms, and toilets blocks.

Client	Location	Value
Ministry of National Education & Literacy	Across Ivory Coast, Africa	GBP 115 Million



Supported by:   
UK Export Finance

# **Our Legacy**

With its roots in the ASGC Group, a construction conglomerate established over 35 years ago, Innovo continues the ASGC legacy to deliver landmark projects and iconic developments.



## MBR Library

**Description:** A LEED Platinum certified library in the shape of a lectern. The project includes a 500-seat theatre that accommodates 4.5 million books, 1 million audio books and 2 million e-books.

**Location:** Dubai, UAE  
**Value:** GBP 210 Million | **Client:** Dubai Municipality



## Dubai Harbour Cruise Terminal

**Description:** The construction of two main cruise terminal buildings, service buildings, CBU building including all associated fit out works, FF&E (fixtures fittings and equipment) and external works.

**Location:** Dubai, UAE  
**Value:** GBP 63 Million | **Client:** Meraas/Dubai Holding





## MC2 – Masdar City

**Description:** A 'greenprint' mixed use sustainable development, split across three different plots, consists of six office buildings, a car park and a Headquarters office building.

**Location:** Abu Dhabi, UAE  
**Value:** GBP 122 Million | **Client:** Mubadala Investment Company



## Sustainability Pavilion

**Description:** A LEED Platinum certified Pavilion Building which produces 80% of its own energy, with solar canopy and multiple energy trees.

**Location:** Dubai, UAE  
**Value:** GBP 186 Million | **Client:** EXPO 2020





## City Walk Residential

**Description:** 34 high grade residential buildings.

**Location:** Dubai, UAE  
**Value:** GBP 530 Million | **Client:** Meraas/  
Dubai Holding



## Bluewaters Island Residential Buildings

**Description:** 10 high-grade residential building and 17 townhouses.

**Location:** Dubai, UAE  
**Value:** GBP 300 Million | **Client:** Meraas/  
Dubai Holding





## Saadiyat Grove

**Description:** Integrated sustainable development of The Grove with construction works for substructure package and Design & Build for superstructure package of five mixed-use buildings, town square, and cinema block.

**Location:** Abu Dhabi, UAE  
**Value:** GBP 355 Million | **Client:** Aldar Properties



## Al Gurm Resort

**Description:** Phases II works including infrastructure, marine, water, sewer and power networks for 71 plots on artificial islands with private beaches.

**Location:** Abu Dhabi, UAE  
**Value:** GBP 45 Million | **Client:** Aldar Properties





# Projects



## Waldorf Astoria

**Description:** LEED Silver certified 5 Star beach resort with 319 keys.

**Location:** Dubai, UAE  
**Value:** GBP 142 Million

**Client:** Dubai National  
Investment Company



## Bloom Marina

**Description:** The master-planned development consists of Estidama 2 Pearl rated Abu Dhabi Edition 5-star hotel with 198 keys, 57 serviced apartments and residential buildings.

**Location:** Abu Dhabi, UAE  
**Value:** GBP 135 Million

**Client:** Bloom Properties





# Projects



## SeaWorld

**Description:** MEP works for the world's largest marine life theme park and animal research, rescue & rehabilitation center.

**Location:** Abu Dhabi, UAE  
**Value:** GBP 140 Million | **Client:** Miral



## IL Primo at Opera District

**Description:** MEP works for 77 storey residential tower

**Location:** Dubai, UAE  
**Value:** GBP 41 Million | **Client:** Emaar





# Projects

---



## Harbour Views

**Description:** 2 High rise Residential buildings (50F+ 3R)  
762 apartments.

**Location:** Dubai, UAE

**Value:** GBP 163 Million

**Client:** Emaar



## Mediclinic Park View Hospital

**Description:** 10-storey, 500,000 square feet development  
with 188 beds and 6 operating theatres.

**Location:** Dubai, UAE

**Value:** GBP 100 Million

**Client:** Mediclinic





# Projects

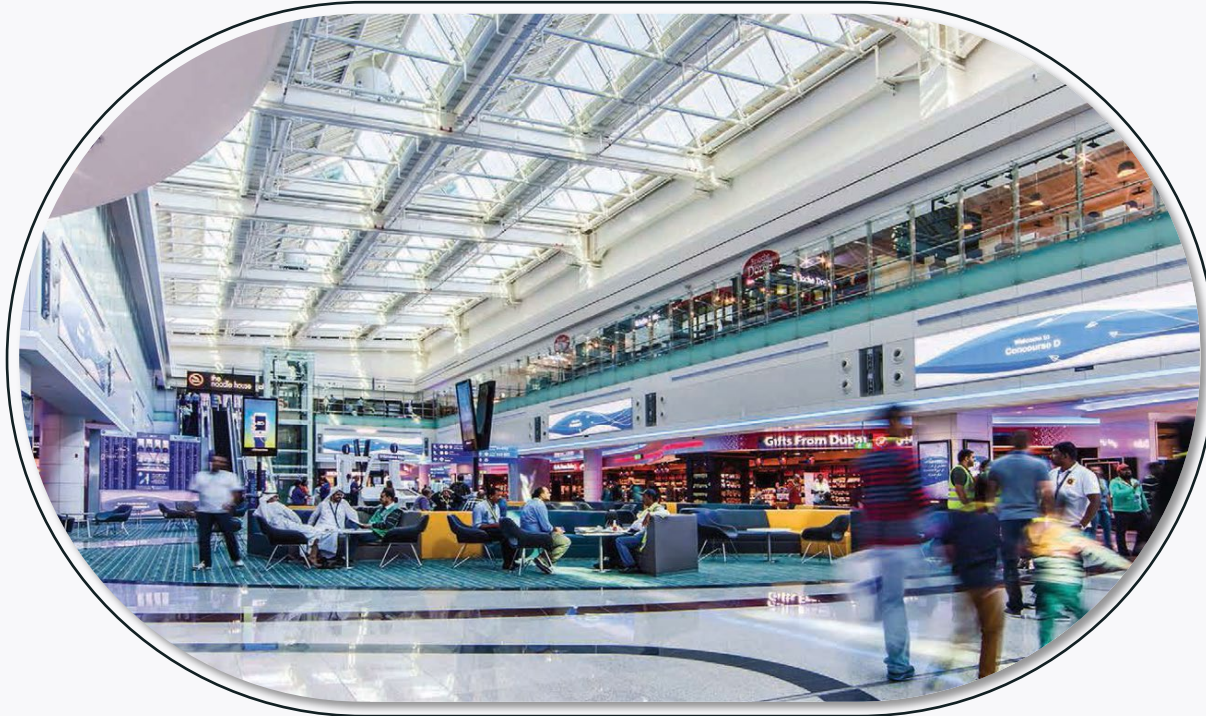


## Dubai International Airport Expansion & Improvement Works

**Description:** Improvement of Dubai International concourses B & C and upgrade of aircraft stands. Also, refurbishment of BHS Halls C & D, Duty-Free and Control Tower.

**Location:** Dubai, UAE  
**Value:** GBP 170 Million

**Client:** Dubai Aviation Engineering Projects



## Improvement of Dubai Metro Stations

**Description:** Design & construction for improvement of selected metro stations – Dubai Internet City, UAE Exchange, DAMAC.

**Location:** Dubai, UAE  
**Value:** GBP 50 Million

**Client:** Road and Transport Authority (RTA)





# Projects

## Route 2020 Metro



**Description:** MEP works for the 4 elevated metro stations of the Expolink Route 2020

**Location:** Dubai, UAE  
**Value:** GBP 42 Million

**Client:** Road and Transport Authority (RTA)



## Doha Metro Phase 1



**Description:** Supply and installation of 12,000-ton structural steel works for the Doha metro.

**Location:** Qatar  
**Value:** GBP 21 Million

**Client:** Qatar Railways Company





# **Embracing Partnerships**

**innovo**



# Embracing Partnerships

- At Innovo, we firmly believe in cultivating strong and meaningful partnerships with a broad range of **clients**. This approach allows us to listen, learn, and collaborate, ensuring that our solutions align with the individual requirements of each client.
- **Our people** are our most important asset. We take great pride in nurturing a work environment that embraces a diverse team of professionals from around the globe, each bringing their unique expertise, perspectives, experiences, and ideas to the table.
- Whether you join our team or engage with us as a client, our aim is for you to feel welcomed and valued. At Innovo, there is a place for everyone, and importantly, an opportunity to **work together toward shared success**.





**Thank You**

**innovo**