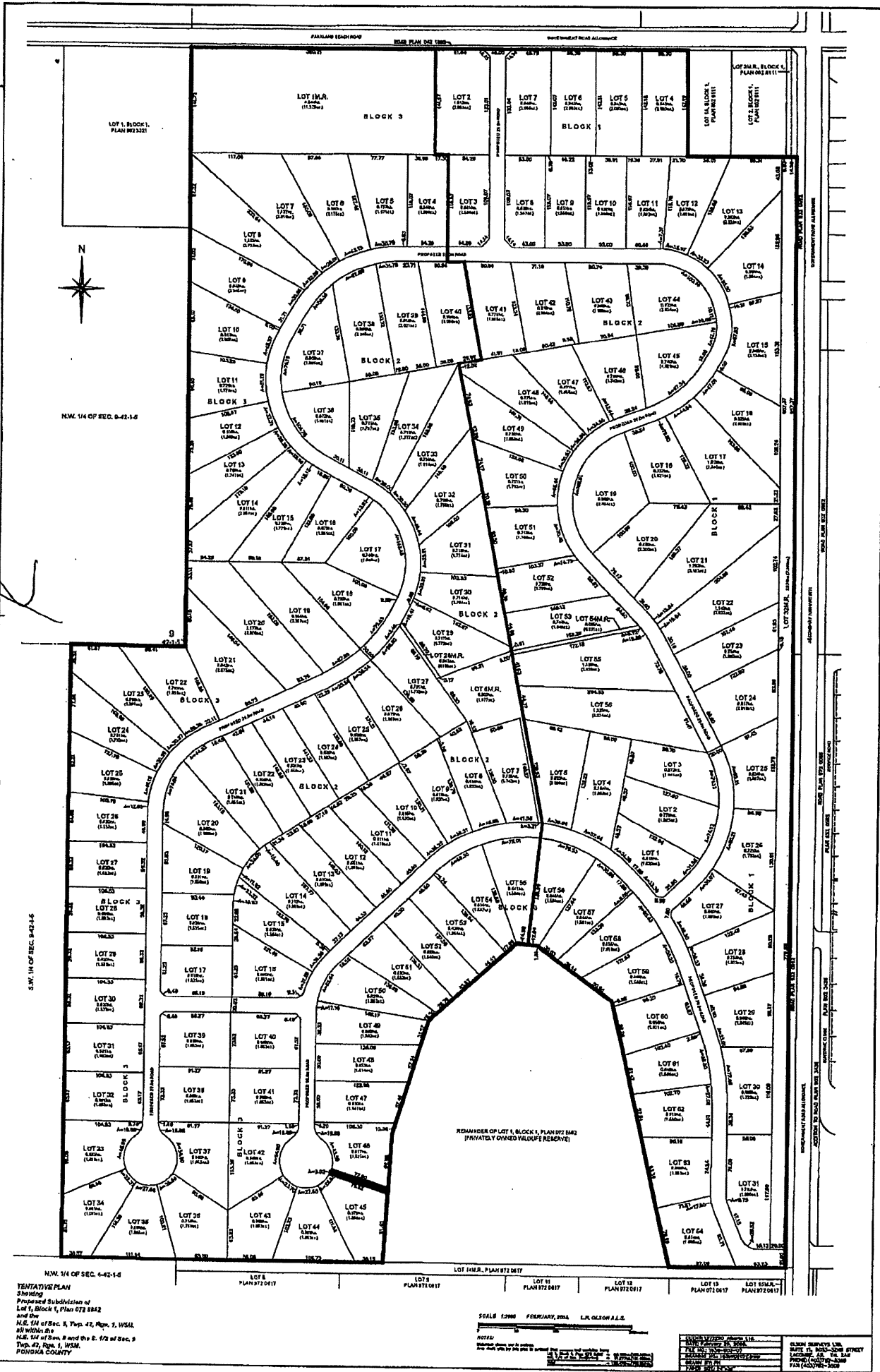


This is the map referred to in WCPA subdivision approval dated 12 September 2008



N.W. 1/4 OF SEC. 6-42-14

TENTATIVE PLAN
Showing
Proposed Subdivision of
Lot 1, Block 1, Plan 072 2842
and the
N.E. 1/4 of Sec. 6, Twp. 42, Rgn. 2, W50,
31/2 W 60 S
N.E. 1/4 of Sec. 6 and the E. 1/2 of Sec. 6
Twp. 42, Rgn. 2, W50,
PONDOKA COUNTY

SCALE 1:2000 FEBRUARY, 2004 L.K. OLSON A.S.C.

OWNER/PLANNING	OLSON SURVEYS, L.L.C.
PREPARED BY	DAVE H. OLSON - 2008 STREET
DATE OF SURVEY	JANUARY 14, 2008
PROJECT NO.	072-2842
DATE OF PLAN	FEBRUARY 2004
SCALE	1:2000