

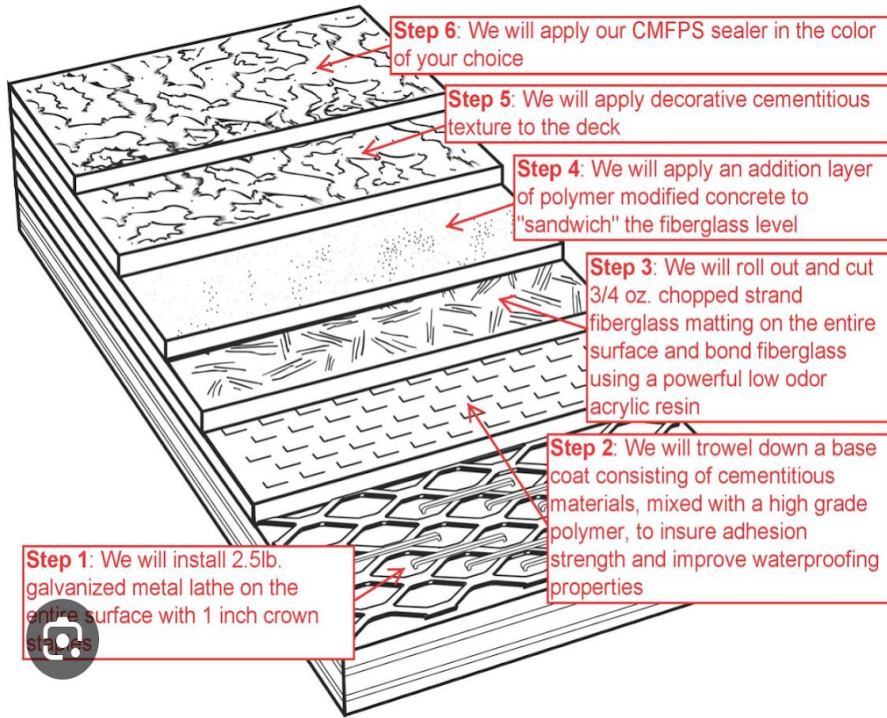
WALKING DECK WATERPROOF SYSTEMS

“PLI - DECK”

IDEAL USES:

- *New & Rehabilitation*
- Multi-Family
- Tract Homes
- Custom Residence





Step 1: Feasibility Assessment

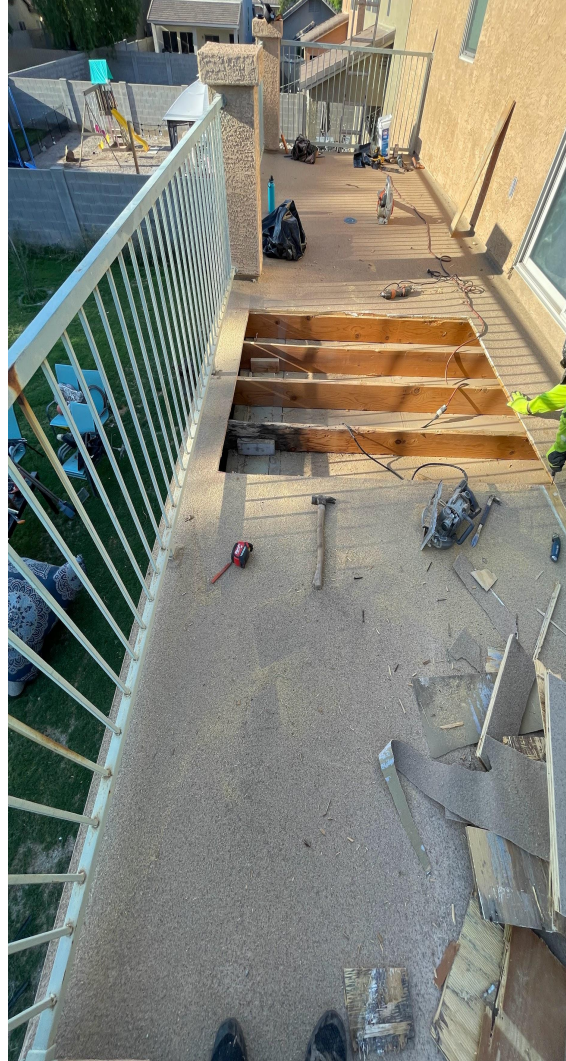
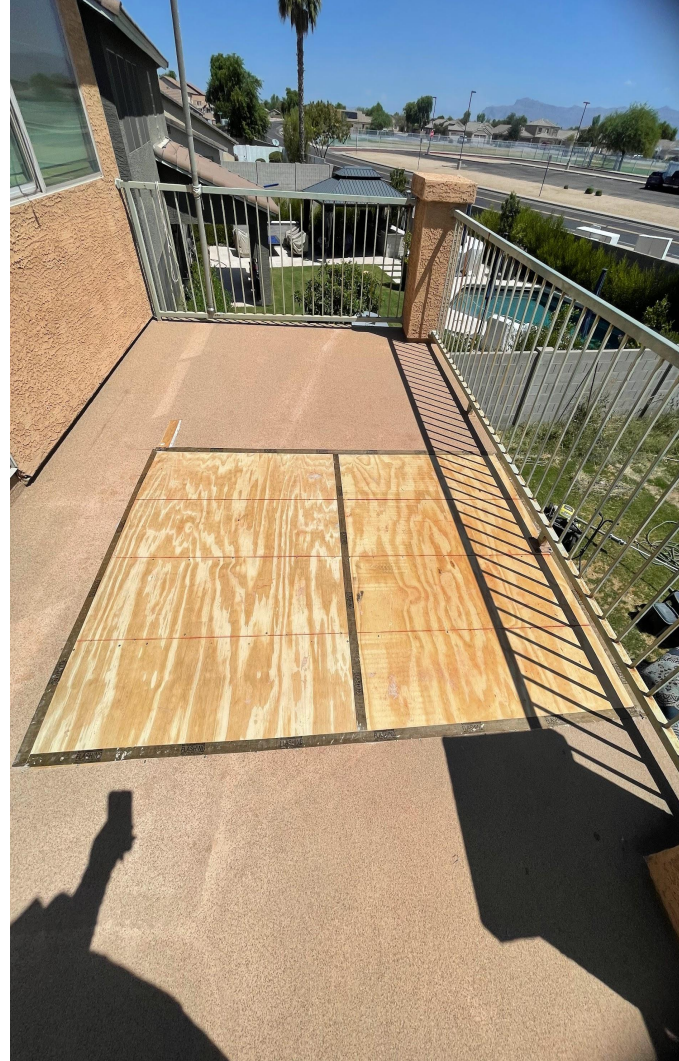
- Evaluate the structural integrity of the building to ensure it can support the added weight of the PLI-DECK and water.
- Consider factors such as local climate, rainfall patterns, and sunlight exposure to determine if a PLI-DECK roof is suitable for the location.

Step 2: Design and Planning

- Determine the intended use of the walking deck roof (e.g., recreational space, wildlife habitat, stormwater management).
- Work with architects, engineers, and landscape designers to create a detailed plan for the PLI system.

Step 3: Waterproofing and Drainage

- Install a high-quality waterproof membrane to prevent water leakage into the building.
- Incorporate drainage layers such as water retention mats, drainage boards, and geotextiles to manage

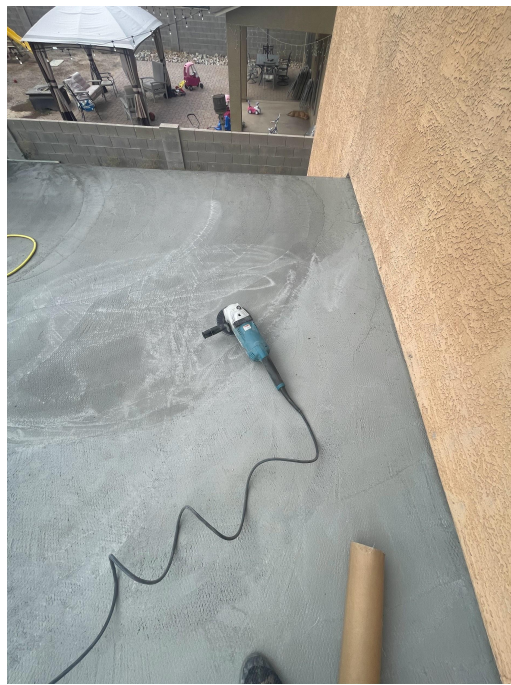


**“FIX ANY STRUCIAL
DAMAGE”**



LAY OUT MESH / STAPLE DOWN





1st LAYER OF BASE CEMENT / GRIND
DOWN AFTER FOR EVEN LEVEL



LAY OUT FIBERGLASS / LAYER OF ACRYLIC RESIN





2nd LAYER OF CEMENT / WE APPLY DECORATIVE CEMENTITIOUS TEXTURE TO THE DECK





“FINAL STEP”

WE WILL APPLY OUR CMFPS SEALER TOP
COAT IN THE COLOR OF YOUR CHOICE

