



CAPABILITY STATEMENT

2025

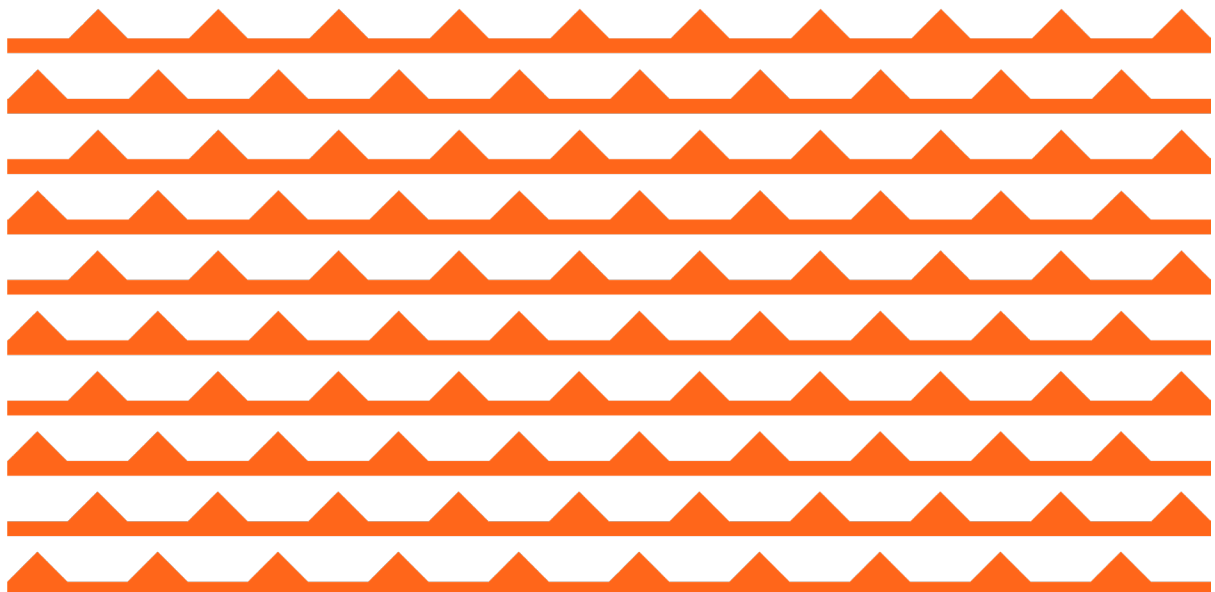


TABLE OF CONTENTS

1.0 Company Overview

2.0 Capabilities

2.1 Earthworks

2.2 Civil works

2.3 Roadworks & car parks

3.0 Projects

4.0 Gallery



1.0 COMPANY OVERVIEW

RMA CIVIL Pty Ltd is a privately owned and operated company in Western Australia, specialising in commercial and industrial earthworks for tier 1 and 2 building companies. We offer extensive knowledge and expertise in a wide range of services, including commercial civil works, earthmoving, roads, carparks and land development. Our ability to successfully deliver a quality, cost-effective and safe project is underpinned by our core value of working together with our clients to achieve their vision. This has resulted in building a successful reputation for RMA Civil demonstrated by productive ongoing relationships with our clients.

2.0 CAPABILITIES

RMA Civil is capable of delivering a range of projects varying in uniqueness and complexity with a variety of versatile plant and equipment available as well as experienced staff and operators.

2.1 EARTHWORKS

RMA Civil are earthworks specialists, able to undertake works on commercial and industrial projects involving:

- Site clearance
- Bulk excavation
- Rock excavation
- Cut to fill
- Bulk fill
- Detailed excavation (batters, raft slabs, footings, services)
- Ground remediation
- Contiguous pile cropping & trimming



2.2 CIVIL WORKS

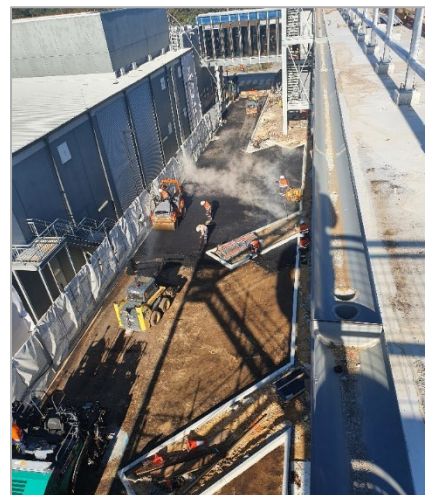
RMA Civil has extensive experience working on industrial-size and large-scale projects, including:

- Industrial facilities
- Warehouses
- Processing plants
- Sporting facilities, racetracks & ovals

2.3 ROADWORKS & CARPARKS

RMA Civil's roadworks services include:

- Road construction
- Hardstand construction
- Carparks for schools, shopping centres, hospitals etc.
- Playing courts
- Kerbing, line marking, signage provision



3.0 PROJECTS

RMA Civil has 30 years of experience in earth, civil and roadworks and has been involved in the construction of many projects over this time. Some projects highlighting our broad capabilities are listed in the table below:

PROJECT	CONTRACT VALUE	RMA CIVIL WORKS DESCRIPTION
WACA Redevelopment	\$7.25 M	Piling mat/hardstand construction, ground remediation & contaminated spoil removal, bulk excavation & fill, concrete foundation pile cropping & trimming
Hitachi Warehouse Facility – Kwinana	\$6.96 M	Earthworks, carparks & hardstand construction under concrete areas
Puma Energy Terminal – Kwinana	\$5.74 M	Tank base & bund wall footing excavation, detailed footing excavation, pile cropping, bund floor aggregate installation, access road & carpark works including kerbing
Sims Metal Stage 1 & 2 – Kwinana	\$3.84 M	Earthworks, carparks & hardstand construction under concrete areas
Komatsu Warehouse – Kewdale	\$1.9 M	Earthworks, carparks & roadways
Burswood Park Road Remediation	\$1.7 M	New roadway, carparks & contaminated spoil removal
Joondalup Health Campus Stage 5A & 5B	\$1.7 M	Bulk earthworks, rock excavation, hardstand installation, detailed footing preparation & backfill
Cannington Greyhounds	\$1.54 M	Earthworks for the track & facilities, carpark & roadways construction
Shenton College – Shenton Park	\$1.3 M	Bulk excavation, carparks & roadways
Claremont on the Park Apartments	\$1.1 M	Bulk excavation (rock excavation), contiguous pile cropping
Vantage Apartments – Rivervale	\$1 M	4 level basement car park (80000m3 spoil excavation), contiguous pile cropping & trimming
Indian Ocean Marine Research Centre UWA – Crawley	\$960,000	Earthworks, carparks & roadways
Ace Apartments – Rivervale	\$882,000	Bulk earthworks
Aveley Shopping Centre	\$870,000	Earthworks, carparks & roadways
Red Castle Apartments – Lathlain	\$830,000	Earthworks, carparks & roadways
The Beach House – Cottesloe	\$800,000	Bulk excavation (rock excavation) & detailed earthworks
New Academic Building – Murdoch University	\$767,000	Site clearance, existing carpark demolition, bulk earthworks, detailed ground slab, footings & staircase excavations/backfill, roadworks, landscaping preparation
Essence Apartments – Claremont	\$590,000	Bulk excavation (rock excavation), contiguous pile cropping & trimming
St John of God Murdoch Carparks	\$540,000	Remediation works to hospital roads & carparks
All Saints College – Bull Creek	\$456,000	New playing courts construction, infrastructure works & seating
Beenyup Bus Depot Site Remediation	\$410,000	Remediation of contaminated works

4.0 GALLERY



*Extended capability statement available on request

RMA Civil Pty. Ltd.
5 Malcolm Road, Maddington WA 6109
Ph: 08 9452 3261
Email: info@rmacivil.com.au
Website: www.rmacivil.com.au
ABN: 33 165 309 142 ACN: 165 309 142