

The Maple Crest



2,195 SQUARE FEET



THREE MAIN FLOOR BEDROOMS



TWO AND A HALF BATHROOMS



THREE CAR GARAGE



KEY LIVING HOMES

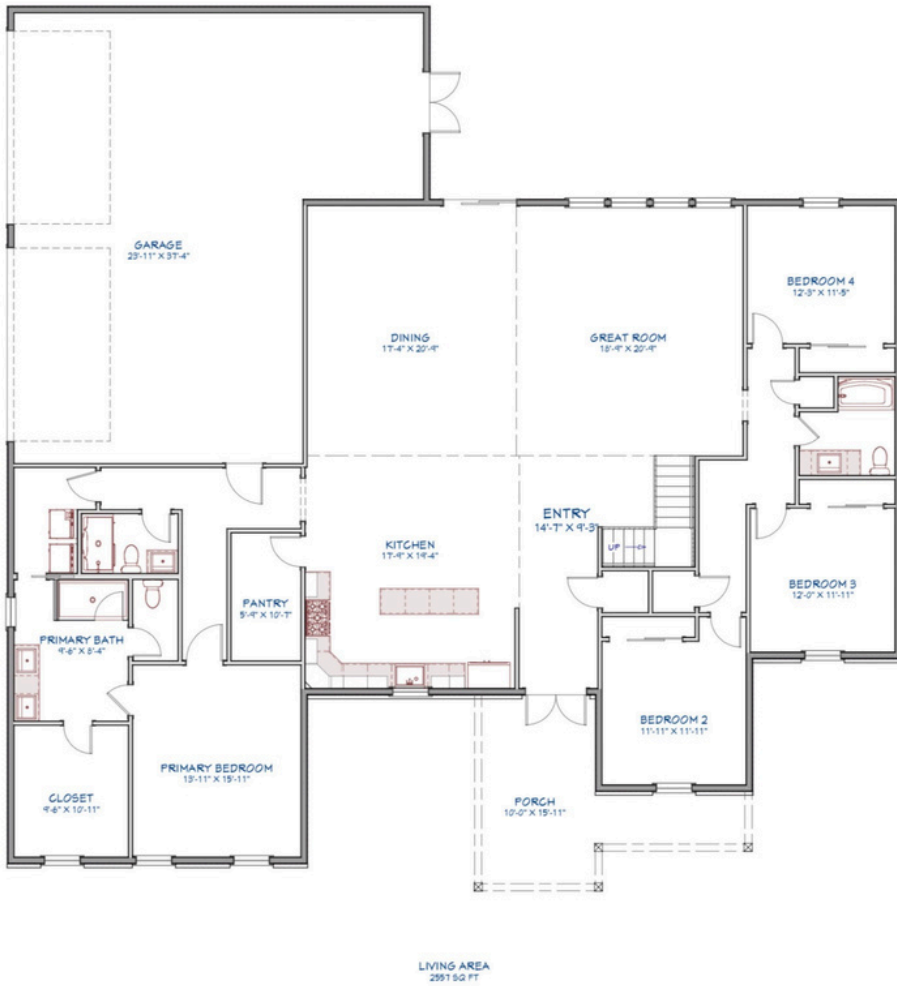
The KEYS you've been looking for.



The Maple Crest

A Key Living Homes Original
Elegant. Functional. Adaptable.

With 2,195 square feet of smart design, The Maple Crest combines open-concept living with three main-floor bedrooms, two and a half bathrooms, and a three-car garage. Every element of this plan can be tailored to you—from layout changes to finishes—because every Key Living Home is built your way.



The Silver Birch



2,557 SQUARE FEET



FOUR MAIN FLOOR
BEDROOMS



THREE FULL
BATHROOMS



FOUR CAR GARAGE

KEY LIVING
HOMES

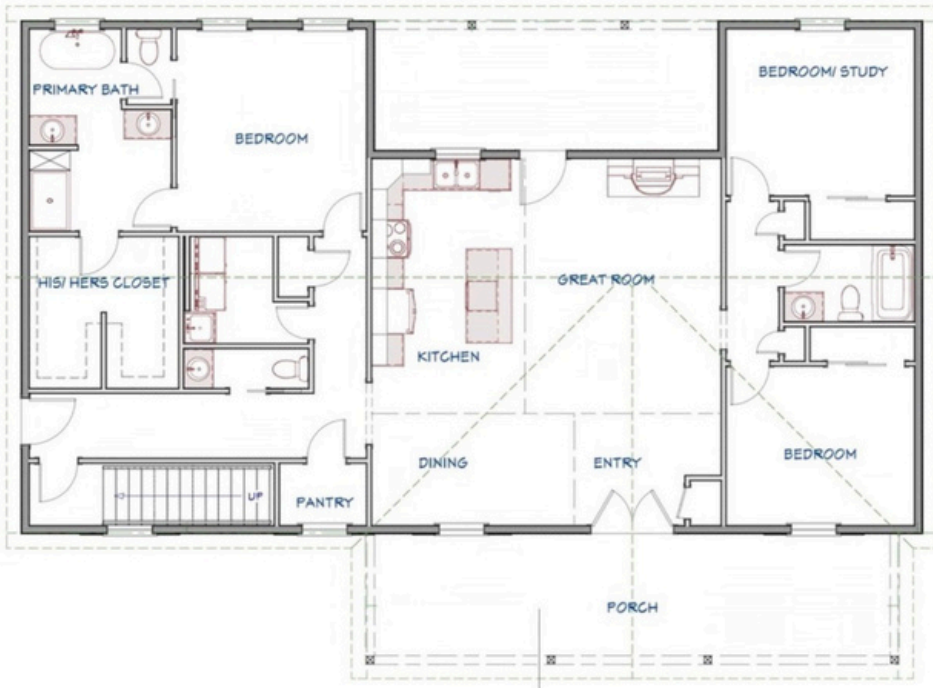
The KEYS you've been looking for.



The Silver Birch

A Key Living Homes Original
Spacious. Versatile. Timeless.

This 2,557-square-foot design offers four main-floor bedrooms, three full bathrooms, and a four-car garage—all thoughtfully laid out for comfort and functionality. Like every Key Living Homes plan, The Silver Birch is fully customizable to match your lifestyle, aesthetic, and family needs.



The Cypress



1,787 SQUARE FEET



THREE MAIN FLOOR BEDROOMS



TWO AND A HALF BATHROOMS



GAS FIREPLACE



KEY LIVING HOMES

The KEYS you've been looking for.



The Cypress

Thoughtfully designed with long-term comfort in mind, this layout prioritizes accessibility, functionality, and ease without sacrificing style. The Cypress offers true main-floor living with an inviting front porch adding timeless architectural character.

The Cypress delivers elevated craftsmanship in a practical footprint making it ideal for growing families, downsizers, or homeowners building their forever home.



The Elm

House

A HISTORIC
MAIN STREET RESIDENCE
BY

KEY LIVING
HOMES

The KEYS you've been looking for.



3,409 SQUARE FEET



STUDY



THREE BEDROOMS



LUXURY KITCHEN



TWO BATHROOMS

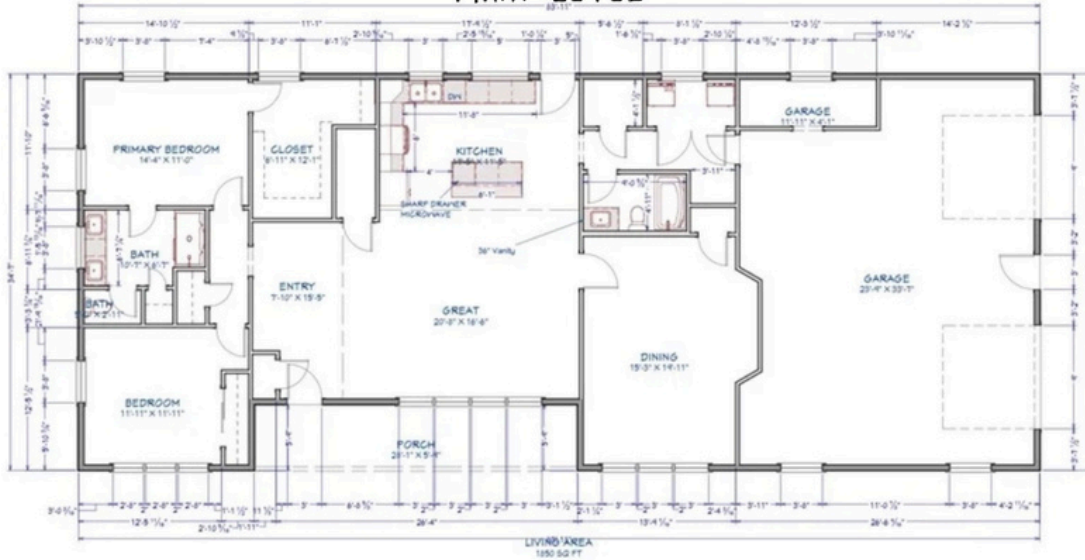


BUTTERS PANTRY

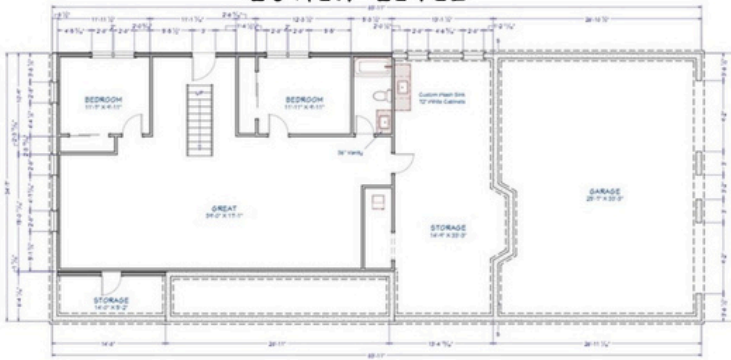
The Elm House

Along historic Main Street, in a reimagined building, our plan, The Elm house is a full floor residence that brings together the charm of small town architecture with the comfort of modern luxury living. With over 3400 ft.² this plan preserves the character and scale of its original structure while introducing an open functional layout with a luxury kitchen and Butler's pantry, dedicated study and expensive storage. It's a rare opportunity to experience the feel of Main Street, living without sacrificing the space and features of a custom home.

MAIN LEVEL



LOWER LEVEL



The Pin Oak

A WHOLE HOME
RENOVATION ON ACREAGE

KEY LIVING
HOMES
The KEYS you've been looking for.



3,140 SQUARE FEET



FOUR BEDROOMS



THREE BATHROOMS



WITH OUTBUILDINGS

The Pin Oak

The Pin Oak is a whole home renovation driven by a distinct homeowner vision and executed through a collaborative design-build approach. Every element of this home was tailored to support the way this family lives, creating a space that is uniquely theirs. We believe the best homes are not defined by trends or templates, but by how well they reflect the people who live in them.