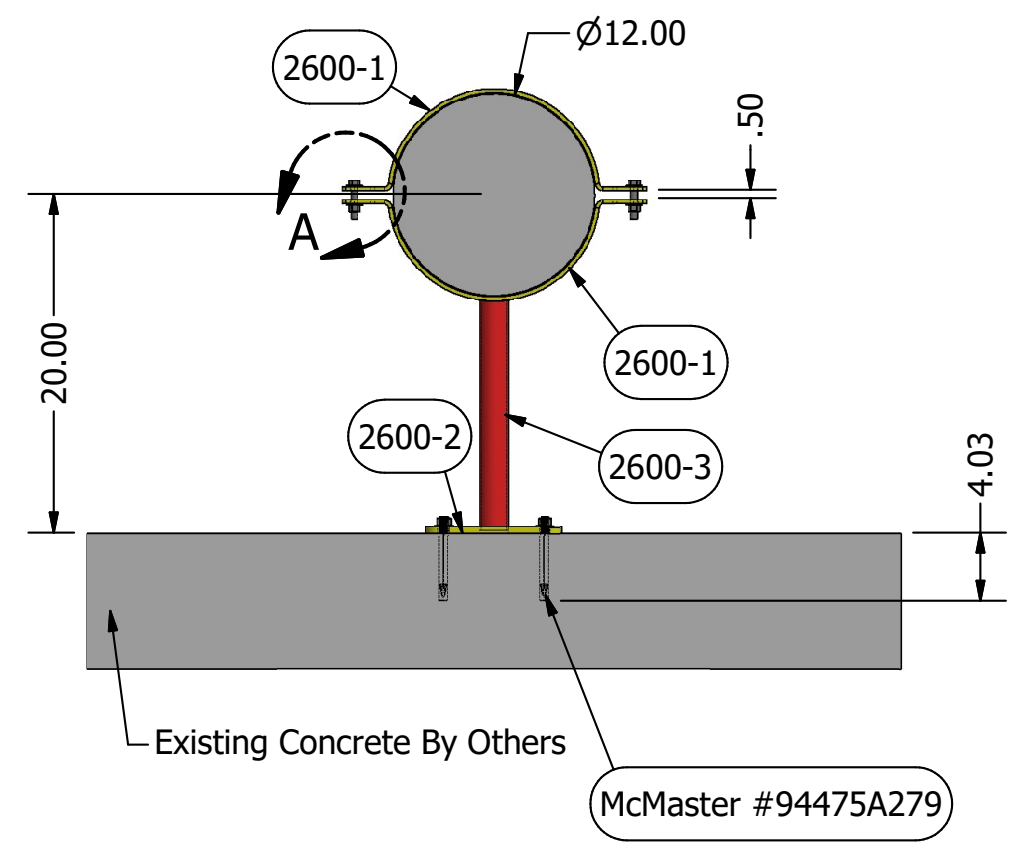


DETAIL A

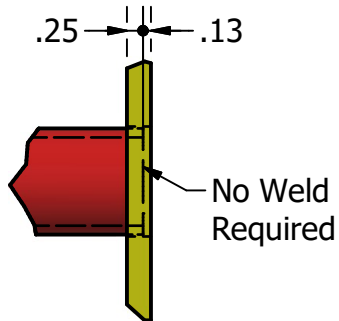
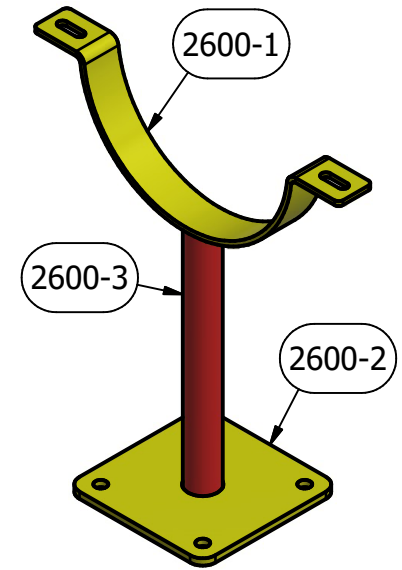
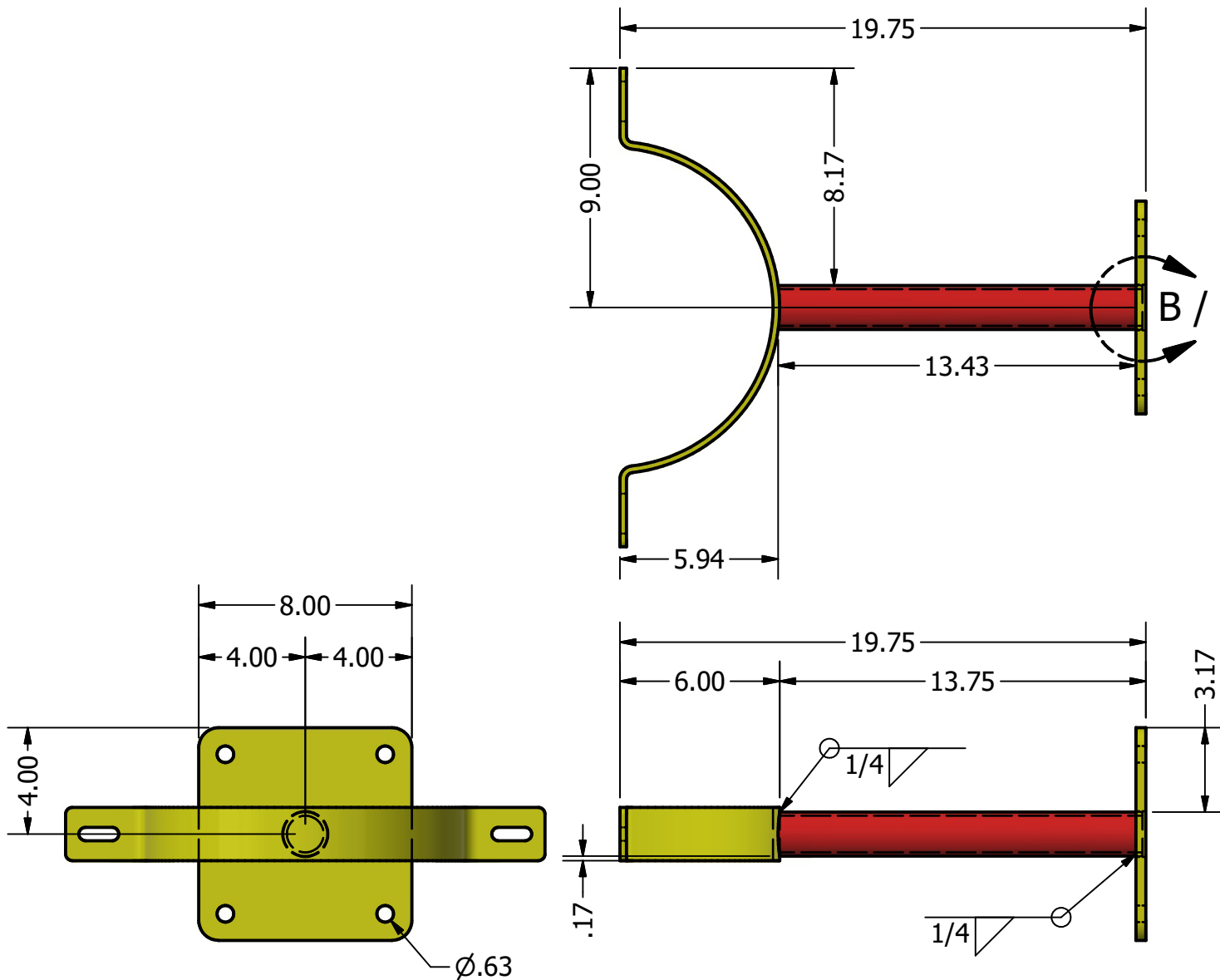


- INSTALLATION NOTES:**
- Install anchors per manufacturer specifications
 - Verify field dimensions prior to installation
 - All hardware stainless steel unless noted
 - Tighten hardware to standard torque values
 - Contractor responsible for field fit-up

Field Installation Drawing

HIS DRAFTING & DESIGN	HIS Drafting & Design	Material: As Noted
	Designed by:jacob scott	
Date:4/7/2026		2600
Pipe Support Assembly		
Waste Water Facility	Revision: A	
UNLESS OTHERWISE NOTED .X ±0.1 .XX ±0.03 .XXX ±0.010 ANGLES ±1°	General Notes: 1. INTERPRET DIMENSIONS PER ASME Y14.5 2. REMOVE ALL BURRS AND SHARP EDGES 3. BREAK ALL EDGES .010-.030 4. DO NOT SCALE DRAWING 5. ALL DIMENSIONS IN INCHES UNLESS OTHERWISE SPECIFIED 6. UNLESS OTHERWISE SPECIFIED, TOLERANCES APPLY 7. GEOMETRIC TOLERANCES PER ASME Y14.5	

PARTS LIST			
QTY	PART NUMBER	MASS	DESCRIPTION
2	2600-1	3.364 lb	.250 SS 304 (1) Ships Loose
1	2600-2	6.499 lb	.500 SS 304
1	2600-3	2.59 lb	1-1/4 Sch. 40 SS 304 Pipe
2	ANSI 3/8-16 x 2	0.085 lb	Plain Hex Head Machine Screw
4	SAE 3/8" Flat washer	0.013 lb	SS Flat metal washers
2	SS 3/8" Hex Nut	0.023 lb	SS Hex Nut
4	McMaster #94475A279	0.306 lb	Wedge Anchor SS, 3/8"



DETAIL B

PARTS LIST

QTY	PART NUMBER	MASS	DESCRIPTION
2	2600-1	3.364 lb	.250 SS 304 (1) Ships Loose
1	2600-2	6.499 lb	.500 SS 304
1	2600-3	2.59 lb	1-1/4 Sch. 40 SS 304 Pipe

HIS
DRAFTING & DESIGN

HIS Drafting & Design
Designed by:jacob scott
Date:4/7/2026

Pipe Support Assembly

Waste Water Facility

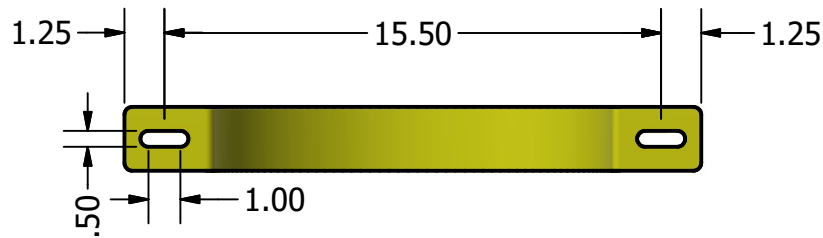
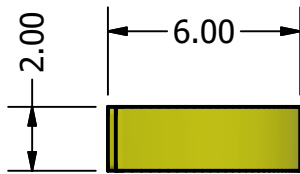
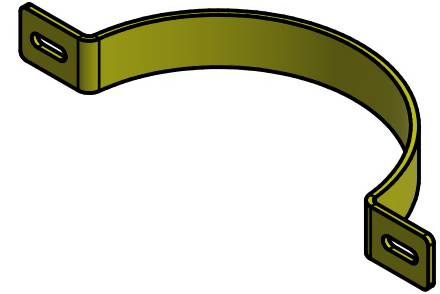
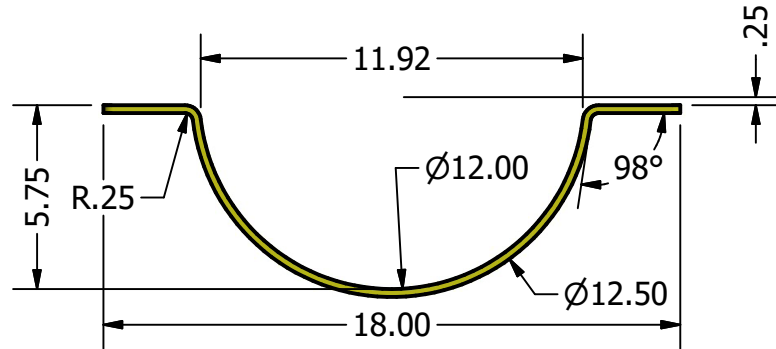
Revision: A

UNLESS OTHERWISE NOTED
.X ±0.1
.XX ±0.03
.XXX ±0.010
ANGLES ±1°

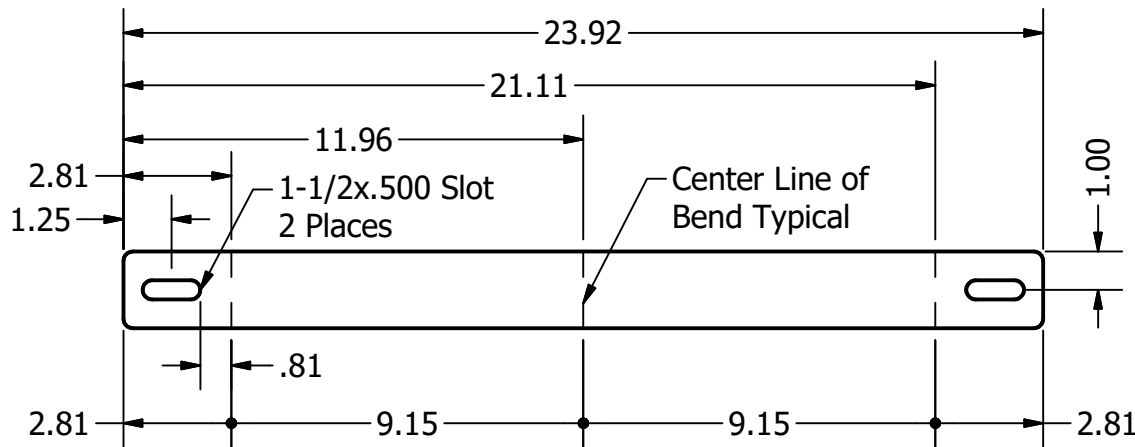
General Notes:
1. INTERPRET DIMENSIONS PER ASME Y14.5
2. REMOVE ALL BURRS AND SHARP EDGES
3. BREAK ALL EDGES .010-.030
4. DO NOT SCALE DRAWING
5. ALL DIMENSIONS IN INCHES UNLESS OTHERWISE SPECIFIED
6. UNLESS OTHERWISE SPECIFIED, TOLERANCES APPLY
7. GEOMETRIC TOLERANCES PER ASME Y14.5

Material:
As Noted

2600



Formed View



Flat Layout

Note: Flat Pattern Developed From K-Factor



HIS Drafting & Design
 Designed by:jacob scott
 Date:4/7/2026

Pipe Strap - Formed

Waste Water Facility

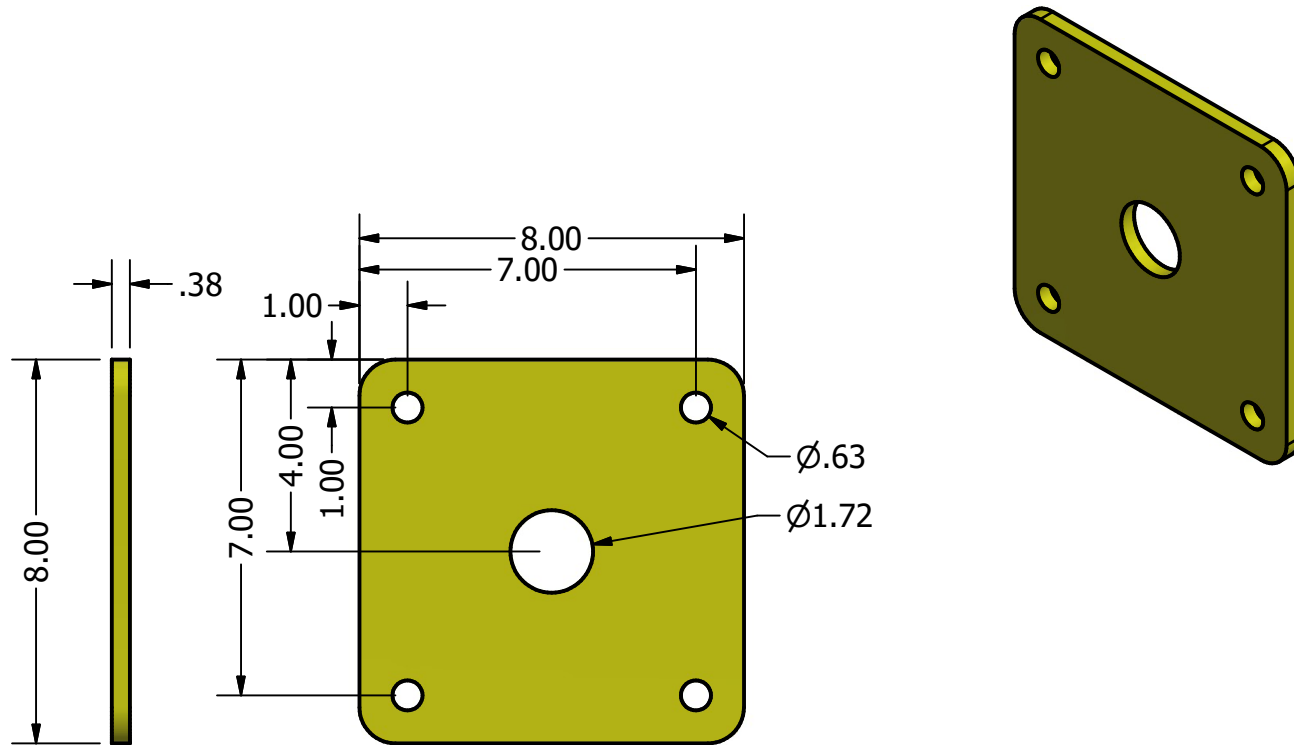
Revision: A

PARTS LIST			
QTY	PART NUMBER	MASS	DESCRIPTION
2 Per Assembly	2600-1	3.364 lb	.250 SS 304 (1) Ships Loose

UNLESS OTHERWISE NOTED
 .X ±0.1
 .XX ±0.03
 .XXX ±0.010
 ANGLES ±1°

General Notes:
 1. INTERPRET DIMENSIONS PER ASME Y14.5
 2. REMOVE ALL BURRS AND SHARP EDGES
 3. BREAK ALL EDGES .010-.030
 4. DO NOT SCALE DRAWING
 5. ALL DIMENSIONS IN INCHES UNLESS OTHERWISE SPECIFIED
 6. UNLESS OTHERWISE SPECIFIED, TOLERANCES APPLY
 7. GEOMETRIC TOLERANCES PER ASME Y14.5

Material:
 .250 SS 304
 2600-1



HIS
DRAFTING & DESIGN

HIS Drafting & Design
Designed by:jacob scott
Date:4/8/2026

Base Plate

Waste Water Facility

Revision: A

PARTS LIST			
QTY	PART NUMBER	MASS	DESCRIPTION
1 Per Assembly	2600-2	6.499 lb	.500 SS 304

UNLESS OTHERWISE NOTED
.X ± 0.1
.XX ± 0.03
.XXX ± 0.010
ANGLES $\pm 1^\circ$

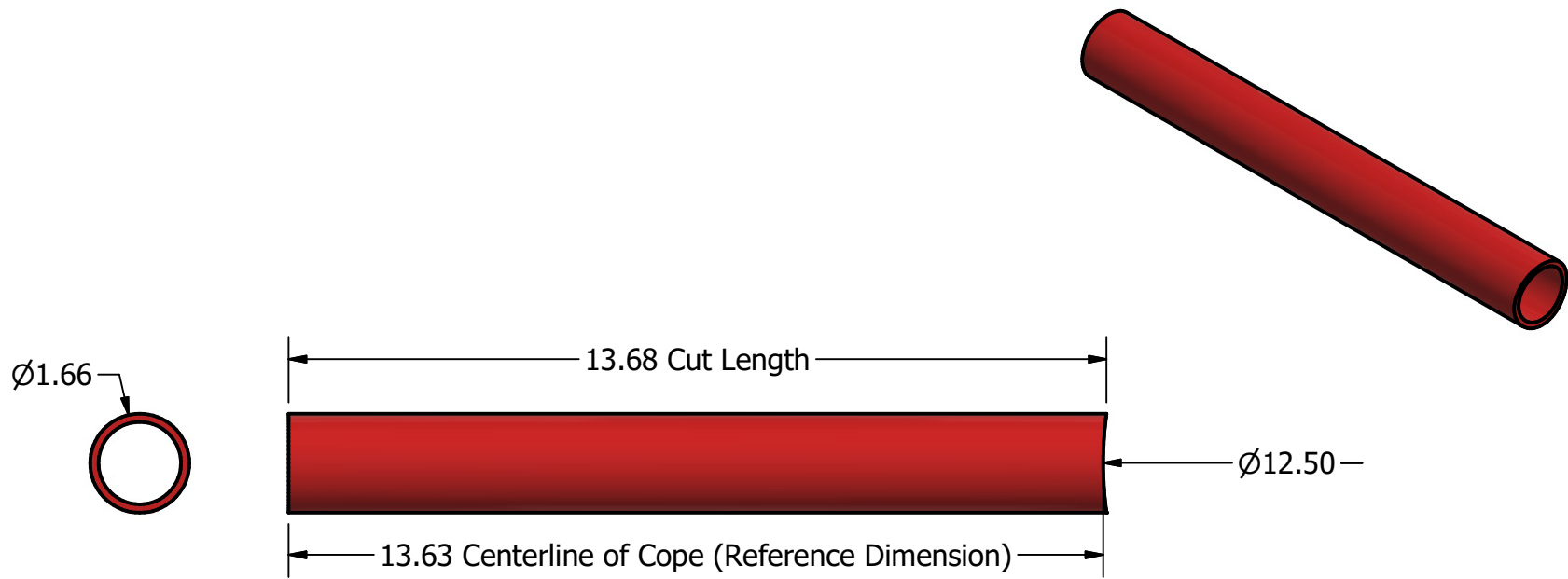
General Notes:

1. INTERPRET DIMENSIONS PER ASME Y14.5
2. REMOVE ALL BURRS AND SHARP EDGES
3. BREAK ALL EDGES .010-.030
4. DO NOT SCALE DRAWING
5. ALL DIMENSIONS IN INCHES UNLESS OTHERWISE SPECIFIED
6. UNLESS OTHERWISE SPECIFIED, TOLERANCES APPLY
7. GEOMETRIC TOLERANCES PER ASME Y14.5

Material:

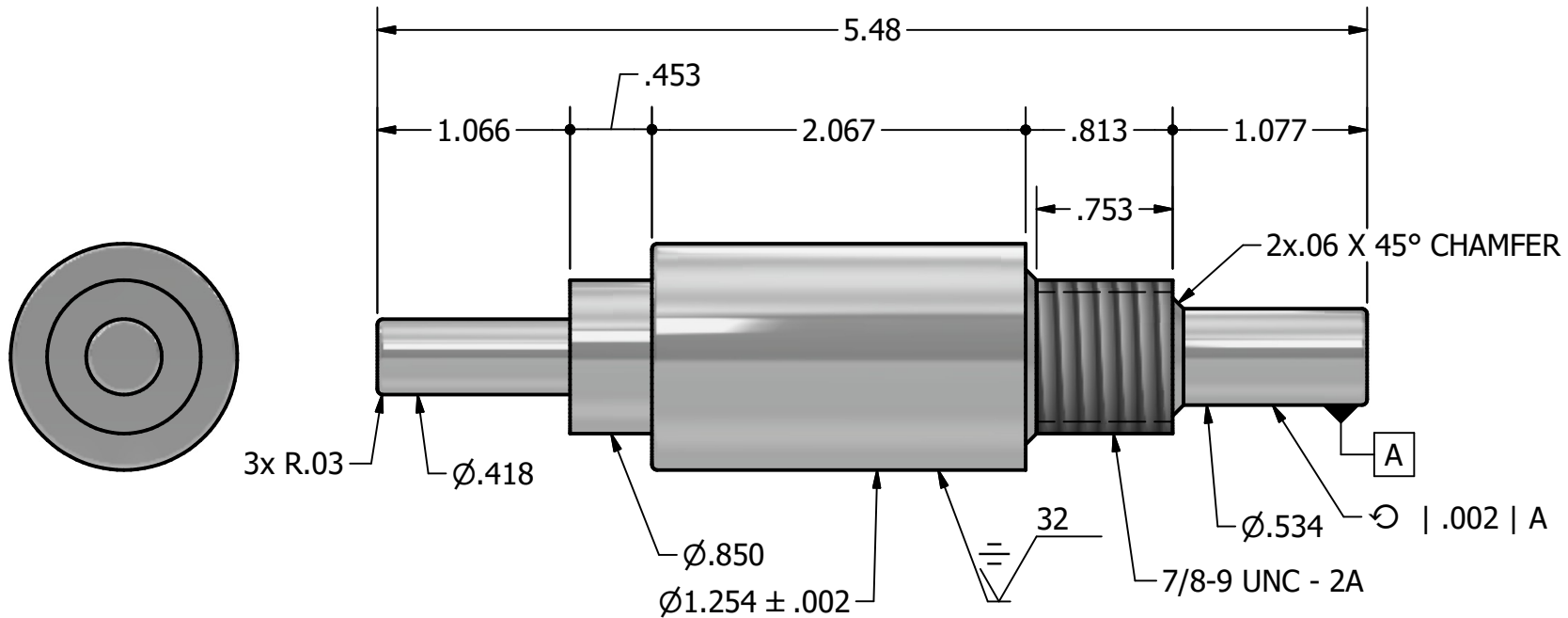
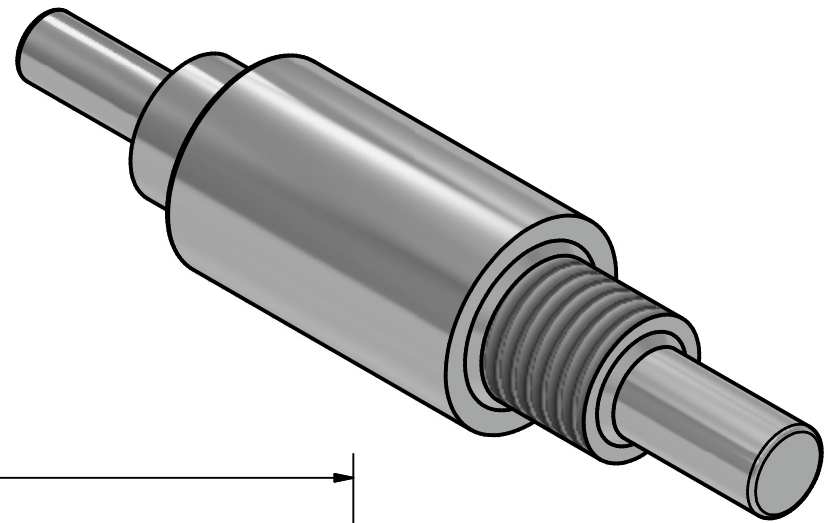
.500 SS 304

2600-2



	HIS Drafting & Design
	Designed by:jacob scott
	Date:4/7/2026
Pipe - Cut Length	
Waste Water Facility	Revision: A
<small>UNLESS OTHERWISE NOTED</small> .X ± 0.1 .XX ± 0.03 .XXX ± 0.010 ANGLES $\pm 1^\circ$	General Notes: 1. INTERPRET DIMENSIONS PER ASME Y14.5 2. REMOVE ALL BURRS AND SHARP EDGES 3. BREAK ALL EDGES .010-.030 4. DO NOT SCALE DRAWING 5. ALL DIMENSIONS IN INCHES UNLESS OTHERWISE SPECIFIED 6. UNLESS OTHERWISE SPECIFIED, TOLERANCES APPLY 7. GEOMETRIC TOLERANCES PER ASME Y14.5
Material: 1-1/4 Sch. 40 SS 304 Pipe	2600-3

PARTS LIST			
QTY	PART NUMBER	MASS	DESCRIPTION
1 Per Assembly	2600-3	2.59 lb	1-1/4 Sch. 40 SS 304 Pipe



1. Material: Nickel Copper Alloy
2. Break All Sharp Edges .01-.03
3. Deburr And Clean
4. Dimensions In Inches
5. Interpret Dimensions And Tolerances Per ASME Y14.5

HIS

DRAFTING & DESIGN

HIS Drafting & Design

jacob scott

4/10/2026

Precision Stepped Shaft

Conveyor Shaft

A

UNLESS OTHERWISE NOTED

.X ± 0.1
 .XX ± 0.03
 .XXX ± 0.010
 ANGLES $\pm 1^\circ$

General Notes:

1. INTERPRET DIMENSIONS PER ASME Y14.5
2. REMOVE ALL BURRS AND SHARP EDGES
3. BREAK ALL EDGES .010-.030
4. DO NOT SCALE DRAWING
5. ALL DIMENSIONS IN INCHES UNLESS OTHERWISE SPECIFIED
6. UNLESS OTHERWISE SPECIFIED, TOLERANCES APPLY
7. GEOMETRIC TOLERANCES PER ASME Y14.5

Nickel-Copper Alloy 400

2601