

# Gold Wing Road Riders Association Region 'H'

# The Kansas Winger

The Official Publication of the  
Kansas District Newsletter By the  
Members of The Gold Wing Road  
Riders Association, Region 'H'

Bill Tucker  
Publisher

Jack & Doris Schoeck  
Directors



# Kansas Winger



## REGION 'H' GWRRA

### Friends for Fun, Safety, and Knowledge

Jack & Doris Schoeck, Directors

Grand Master Riders

Jack #1961 Doris #2389

## Kansas Monthly Newsletter



#### Contents

Pg 2 District Directors Article  
Pg 4 District & Chapter Officers  
Pg 5 Chapter Information  
Pg 6 District Rider Ed Article  
Pg 7 Chapter 'A'  
Pg 13 Chapter 'B'  
Pg 14 Chapter 'C'  
Pg 16 Chapter 'F'  
Pg 17 Chapter 'H'  
Pg 28 Chapter 'P'  
Pg 31 Chapter 'Q'  
Pg 34 District Couple  
Pg 35 Chapter Couples  
Pg 37 Kansas Twisters  
Pg 40 Events Calendar

#### HAPPY FALL!!

Hope everyone is enjoying the nice fall weather we are having. It is practically perfect riding weather.

It has been a busy month for your state staff in Kansas, but what a great month it has been for seeing friends and making some new ones!

On September 7, 2014 we had a great turnout for our Kansas State Fair Sunday in Hutchinson. We had a total of 36 bikes and 49 people that I counted. Hopefully I did not miss anyone. Sometimes it is hard to count people when they are always on the move!

It was great day weather wise and everyone had a good time walking around the fair and visiting with friends. As always there were many opportunities to talk to people that walked by, about our motorcycles and our organization. Being up front by the Administration Building is always a great place to be as everyone at the fair walks by that area at one time or another. Thank you to all who came and shared the day with us.

The weekend of September 12-14, 2014 brought our yearly Convention to Abilene, Kansas for the second year. On behalf of the Kansas State GWRRA Staff, We would like to extend a HUGE

THANK YOU to all our Kansas Chapters and their Directors and members who helped make this year's Convention a SUCCESS! Without each of you we could not have had this Convention. You are all a great blessing to the Kansas State Staff. We would also like to thank those of you who came on Sunday Morning to help us finish cleaning up the building! It was very much appreciated.

We had a total of 145 attend this year, and everyone seemed to have a good time. We had people from Oklahoma, Texas, Louisiana and other states as well as our own Kansas people.

The Twisters put on an excellent show at the Abilene High School parking lot on Saturday morning and had approximately 80 people in attendance.

We had a total of 9 vendors and each seemed to be busy with customers.

We had 10 people who camped on site at the Fairgrounds and many other people giving their money to the motels in the area. There were a lot of places to go and eat and I know that many of you found those places!

Next Page



*District Continued*

Friday the weather was chilly and cold but Saturday was a beautiful day for everyone.

Many of our vendors gave us door prizes and we want to thank each one of them for that. We would also like to acknowledge our Major Sponsors for their contributions to our Convention.

**The Major Sponsors are: Horizon Trike from Clarksville, Arkansas, Dan's Cycle from Hesston, Kansas, Merle Snider Motors from Winfield, Kansas, and Dairy Queen from El Dorado, Kansas, which is our very own Garry and Phyllis Van Buskirk.** We truly appreciate all they do for Kansas GWRRA. **We also want to acknowledge the Dairy Queen of Abilene, who provided the Dilly Bars for our Ice Cream Social on Friday night. They provided these at no cost to us.**

We ended up with three (3) times for the Trolley Rides around Abilene this year and a total of 67 people enjoyed those rides. Abilene had a lot of beautiful homes and those people who rode got to see a lot of them.

Sarah Taylor from Chapter H in Hutchinson won the quilt that we raffled off and was very excited to win it! Alvalin Woodul from Killeen, Texas won the Wood Wing Art Plaque that we auctioned off and was also excited to take that home.

It was announced at closing ceremonies that next year's convention will be held September 18-19, 2015 at the Best Western Motel at 915 E. 53<sup>rd</sup>, Wichita, Kansas. This is where we held Mid-Winter Rendezvous last January and it is where we will have Mid-Winter this coming January. The people at this Motel are excited to have us come and are great people to work with.

On Sunday, September 21, 2014 we had 32 people attend our East Picnic Ride to Wamego, Kansas. We had a beautiful day for the picnic and 26 people went through the Wizard of Oz Museum in downtown Wamego. We had the shelter house next door to the miniature train and some of our people even rode that train! It was a beautiful fall day for the ride and all of us enjoyed the day.

The weekend of September 26-27, there were several people from Kansas who attended the Oklahoma Convention in Shawnee, Oklahoma. They put on a great time and we all had a wonderful time visiting with friends and attending the events.

The main upcoming event is the Region Staff Meeting for the core Kansas Staff and it will be held in Marshall, Texas on November 15, 2014.

There are several chapters that are planning Fall Foliage Rides through Kansas, Missouri, and Arkansas and I am sure that they would welcome anyone that wants to attend those rides with them. Give one of them a call and they would be glad to have you go along!

Until next time, Ride Safe and Ride Often!

Jack and Doris Schoeck, Kansas District Directors

# KANSAS DISTRICT STAFF

## DISTRICT DIRECTORS

**Jack & Doris Schoeck**  
620-341-0426

## ASSISTANT DISTRICT DIRECTORS

**Rick & Brenda Kistler**  
316-200-0726

### DISTRICT RIDER EDUCATOR

**Bill & Sheila Tucker**  
316-777-1052

### DISTRICT TREASURER

**Judy & Ron Eggleston**  
580-269-1221

### DISTRICT PATCH LADY

**Sheila Tucker**  
316-777-1052

### DISTRICT TRAINER

**Marty & Ruth Dannar**  
316-260-5272

### DISTRICT MEC

**Bill Watts**  
620-665-3877

### DISTRICT NEWSLETTER EDITOR

**Bill & Sheila Tucker**  
316-777-1052

### DISTRICT COUPLE OF THE YEAR COORDINATOR

**David & Sherri McDonald**  
316-650-3238

### DISTRICT COUPLE OF THE YEAR

**Steve & Terri Bockhaus**  
316-772-6603

### DISTRICT MEDIC FIRST AID TRAINERS/INSTRUCTORS

**Steve & Terri Bockhaus**  
**Jack & Doris Schoeck**  
**Marv Ayers & Bill Tucker**

### RIDER COACHES

**Bill Tucker**  
**Jim Lamb**  
**Rick Stevens**

### DISTRICT MOTOR AWARENESS COORD.

**Gary & Susan Drake**  
785-828-4801

### DISTRICT HISTORIAN

**Brenda Kistler**  
316-250-8920

### DISTRICT WEB MASTER

**Dale Tritsch**  
620-921-5941

### FRANK PATTON AWARD 2014/15

**Rick & Brenda Kistler**  
316-200-0726

### Chapter 'A' CD

**Rod & Ann Gillett**

### Chapter 'B' CD

**Allen & Lee Ann Robertson**

### Chapter 'C' CD

**Ron & Marj Crawford**

### Chapter 'F' CD

**TBA**

### Chapter 'H' CD

**Terry & Judy Mann**

### Chapter 'P' CD

**David & Sherri McDonald**

### Chapter 'Q' CD

**Jack & Teresa Kistler**



## ***GWRRA Kansas Chapters, Chapter Directors and Get-Together Time & Place***

**Feel free to attend any Chapter meeting and introduce yourself.  
You will be welcome.**

Call the CD if you need more information about a Chapter activity.  
If you are interested in organizing a Chapter in your area,  
Please contact JACK & DORIS SCHOECK 620-341-0426  
for more information.

### **Chapter "A"**

Rod & Ann Gillett, CD  
316-721-0638  
Second Thursday at 7:00 p.m.  
**Bishop's Family Dining**  
4200 w Kellogg Dr, Wichita  
[rgillett@cox.net](mailto:rgillett@cox.net)

### **Chapter "B"**

Allen & Lee Ann Robertson, CD  
(785) 979 4831  
3rd Thursday at 7:00 p.m.  
**JTs Grill**  
33255 Lexington Ave., DeSoto  
[Allen.robertson1@gmail.com](mailto:Allen.robertson1@gmail.com)

### **Chapter "C"**

Ron & Marj Crawford CD  
785-764-0626  
Third Tuesday at 7:00 p.m.  
**Perkins Restaurant**  
1720 SW Wanamaker Road, Topeka  
[solpokbluesolpokblue@yahoo.com](mailto:solpokbluesolpokblue@yahoo.com)

### **Chapter "F"**

TBA  
Fourth Tuesday at 7:00 p.m.  
**Old Oil Rd School**  
West 6th Ave, El Dorado

### **Chapter "H"**

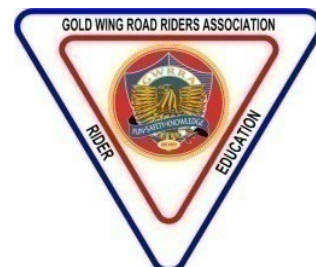
**Hutchinson, Kansas**  
Terry & Judy Mann CD  
620-728-9320  
4th Thursday 7:00p.m.  
**Sirloin Stockade**  
East 17th, Hutchinson  
[remotemann@gmail.com](mailto:remotemann@gmail.com)

### **Chapter "P"**

David & Sherri McDonald CD  
316-650-3238  
2nd Friday at 7:00p.m.  
**Derby Church of Christ**  
225 N. Derby St. Derby  
In Fellowship Hall, South End of Building  
[dlovessh@sbcglobal.net](mailto:dlovessh@sbcglobal.net)

### **Chapter "Q"**

Jack & Teresa Kistler, CD  
(316) 651-7423  
1st Thursday at 7:00 p.m.  
**Laurie's Kitchen**  
Mulvane KS  
[Actionjackson@wheatstate.com](mailto:Actionjackson@wheatstate.com)



# RIDER EDUCATION BULLETIN BOARD



## District Educators

Bill & Sheila Tucker

316-777-1052

Life Grand Master #242

Life Grand Master #527



## Asst District Educators

Jim & Carol Lamb

620-545-8465



CE-KS-A	CE-KS-B	CE-KS-F	CE-KS-H	CE-KS-P
Larry Mazur	Eric Wadman	Russel Harrold	Marv Ayres	Rick & Carolyn Stevens
316-688-5696	913-219-6678	316-648-4714	620-241-2499	316-213-4630

Hello all,

The Kansas convention had a first. At least I don't recall the weather being what it was in September.

Cold! Yes, cold. For our light parade ride it was a cool 40 plus degrees at 8pm. It got as low as 39 degrees during the night. We did catch a break Saturday as the day warmed up, if you call 50 degrees warm, in time for the Twister Drill Team performance and the Maze ride challenge was going on.

We had 30 bikes and a bunch of hearty Co-riders in the light parade. The \$50.00 winner was Ray Cassatt of Iowa District.

A big thank you to Steve Bockhaus and those who helped with setting up the Maze Challenge. Sorry, I wasn't given any names of those that were involved. But your efforts are appreciated. Steve said there were total of ten bikes & Trikes that participated and seem to enjoy the challenge. I'm told that one rider towed his trailer behind his trike and did very well.

The 7:30am Level IV breakfast at the Hitching Post Restaurant had 55 in attendance. Our guest speaker was Officer Kris Kobiski, of the Abilene Police Department. He spoke on 'Identity Theft' and had everyone's attention during his presentation. There was a Q&A time available.

Kansas, Oklahoma, Colorado, Texas, Iowa, Louisiana were represented. From the International Team we had Bill & DeeAnn Gray. Region 'H' was well represented. RD Jack Wagner, ARD Garry & Phyllis VanBuskirk, RE Sam Belinoski, Region MEC Steve Fleming, Region MFA Coordinators Rick & Karen Frazier. We thank them for coming to the Level IV breakfast.

Three Rider Education seminars were presented. My thanks to Marv Ayers and Rick Stevens for presenting the seminars. Rick gave two seminars. He substituted for his wife Carolyn. She was unable to attend due to her father becoming very ill. Thanks for jumping in there Rick. All three seminars were well attended.

At closing ceremonies, Rick Stevens, Chapter Educator for Kansas 'P' was presented his certificate of appointment to Senior Chapter Educator. Rick also serves on my staff as a rider course instructor. Thanks for all you do Rick.

Rider Ed had several drawings. Two \$125.00 cash prizes and three First Aid Kits were given away.

What's ahead for the Educator team. I'm in the process of scheduling a training session that will include Motor Awareness Seminar and CPR/First Aid. More on the location later. I'm waiting to see what part of the district has the most interest to have it.

## **PRACTICE MAKES PERMANENT! YOU ARE WHAT YOU PRACTICE!**

*Do yourself and your loved one a favor. Take a Riders course!*

(If you keep on doing what you are doing, you will keep getting what you are getting!)

Bill

# Chapter A – Wichita

[www.geocities.com/gwrrachaptera](http://www.geocities.com/gwrrachaptera)



<b>Chapter Directors</b> Rod & Ann Gillett 316-721-0638	<b>Newsletter Editors</b> Mary Mazur 316-688-5696	<b>Phone Tree</b> Rod & Ann Gillett 316-721-0638	<b>Chapter Historian</b>
<b>Asst. Chapter Director</b> Marty & Ruth Dannar 316-260-5272	<b>Chapter Educator</b> Larry & Mary Mazur 316-688-5696	<b>Chapter Treasurer</b> Jerold Shook	<b>Chapter Couple</b> Bob & Barb Brown

Hello everyone

Welcome to October. I don't know about everyone else but I'm going to have to use October to recover from a very busy September. In fact there were so many rides going on this month that I couldn't make them all so I want to thank Marty Dannar & Barb Brown for sending me information on 2 of the rides

1<sup>st</sup> thing right out of the box was September 1<sup>st</sup>, Labor Day when a lot of us didn't have to work so Larry decided that this day would be a good day to take a ride to southeast Kansas to the very small town called West Mineral to see Big Brutus. For those of you who do not know who or what Big Brutus is...it's one of the largest electric shovels in the world and it has lived in Kansas since 1962. It has not operated since 1974 & was donated as the main attraction for a museum which opened in 1985. We sent out an invitation to our GWRRA family & had 5 others join us for our little ride...here are a few pictures



Charlie, Michelle Chris, Larry, Mary,



Marv & Dale Larry, Chris, Charlie in the loader



Michelle & Mary In the loader



Chris & Larry in the track



Marv in the track



Dale on the inside looking out



*KSA Continued*

The very next weekend was our yearly trip to the State Fair which is always great because we get to park our bikes on the fairgrounds and all the people passing by get a chance to see them and get information about what it's like to belong to GWRRA. I know that more than one of us joined GWRRA from talking to someone at the State Fair. Here are just a few pictures from this trip.



One view of some of the bikes



a few of the bike looking the other direction



a few of us on the tram



Larry taking in the sights & sounds

So...we are barely over our fun in the sun from being at the Fair and what do you know it's now time for our monthly chapter meeting on the 11<sup>th</sup>. It wasn't a big group there that night but that might be because the District Rally started the next day





*KSA Continued*

Talking about the Kansas District Rally which was again held in Abilene Kansas. I have to say that the weekend was a lot cooler than we're all used to and we all started out the mornings wearing extra shirts or coats or whatever we needed to keep warm but the weather really did turn out to be very nice for this weekend. I think we all need to give a big round of applause to our District Staff because they did a wonderful job putting on this year's event. Dale Tritsch did a great job Friday evening helping to put on the entertainment (not sure I trust him anymore with a carrot). The Twisters gave a great performance Saturday morning for the 2<sup>nd</sup> year in a row. There were classes and bike shows and just a great time for everyone. Congratulations to Rick & Brenda Kistler on receiving the Frank Patton award this year. They work very hard for GWRRA at both the chapter level and the district level so it is very well deserved. I'm sorry to say that although I took the camera with me I left it in my room so you will have to depend on others for pictures.

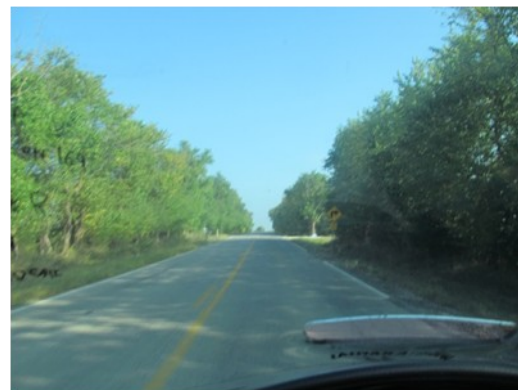
Wow...that was just the first 2 weeks but the next week was just as busy all by itself with 3 different rides within 4 days.

Our monthly dinner ride on the 18<sup>th</sup> which Barb & Bob Brown were in charge of and here's what Barb wrote about this evening.

*We had 6 bikes show up with 7 people. The weather was perfect coming down from Newton. We met at the Quik Trip at Kellogg & Maize and then rode over to Auntie Mae's for some delish Chicken Fried Steak, Pan Seared Pork Chops, Cheese burgers & HUGE cinnamon rolls. All attended were from Chapter A this included the Hosts, Steve & Terri Bockhaus, Bob Davis, Marty Dannar & Hal Williams. Thank you everyone who attended & we missed all those who did not....Maybe next time!!! We had a Great time!!*

Next is the Day ride hosted by Marty Dannar on the 20<sup>th</sup> and here's his report of what all happened on this ride

*On 9/20/14 the group rode up to the Cheesecake Factory, in Leawood, Ks. Group had great ride, lots of laughter and deep discussions. pictures attached of the ride's view of, NO turnpike, just back roads.*



*The group's lunch discussions, for the ride home, varied from, "Which one of us needs a facial?" "Who are you?", "What gun shop are we shopping at, later?"*

*KSA Continued*

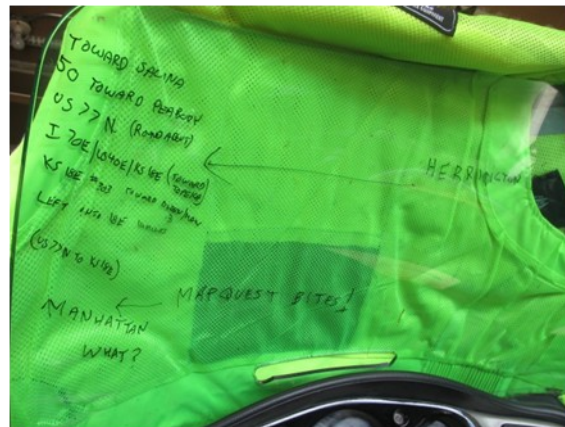
or “Do we ride back as a group, then just everyone meet at the Braums, Dairy Queen, in El Dorado, after looking at the car show there?” Thank you Marty for being the ride captain, tail-gunner and photographer.

Yes you read that right...poor Marty couldn't find anyone who could go with him on this ride except for his biker buddy Chance. But as you can see Marty and Chance had no problem finding someone who would let them share their table.

So now let's talk about the district ride to Wamego on the 21<sup>st</sup> . If you've never been to Wamego it's about 3 hours to the north-northeast and it has a great Wizard of Oz museum! Marty, Larry and I met at the vacant lot @ the corner of Hydraulic & Lincoln @ 9:15 and had a nice ride until we hit the detour @ Herrington.



View of two of us from Marty's side mirror



Marty's instructions and his message about how “mapquest bites”

Our problem is that we were not using a GPS and did not know that when we turned to the right to follow the detour signs that they would take us in a circle from the south side of Herrington where a bridge was out around to the north side of the same bridge so it added a little bit of time and around 40 miles to our trip and almost made us late for lunch.

*KSA Continued*

Bob showing Terri his little camera



Dale &amp; Brenda feeding their inner child on the swings



After lunch most of us went over to tour the Oz museum (for those of us that are Wizard of Oz fans this was a very sweet treat)

After the museum we went back over to the park and a few decided that they would take a ride on the Reading Railroad. The train could only hold 3 adults at a time so most of us decide to pass on the ride but here are pictures of those that rode



Gene Shannon w/2 junior riders



Brenda &amp; Rick Kistler w/Terri Bockhaus in the caboose

I did not count them so I do not know just how many bikes show up for this ride but there were quite a few. And the ride back home was great. Steve led 6 us (himself, Terri, Bob, Marty, Larry and me) on some great road with lots of curves (and he managed to avoid the Herrington detour). The only thing I know that's left to do in September is the Oklahoma Rally. I know that a few from Chapter A will be going to but it's happening after my deadline to submit this article so maybe someone can write something about it in next month's newsletter.



***KSA Continued***

Speaking of next month, here are a few things coming up in October

Oct 9<sup>th</sup> / Monthly meeting @ Bishops on West Kellogg (in front of K-Mart) meeting starts @ 7:00 but come early to enjoy a meal and visit with the other members

Oct 10<sup>th</sup> thru 12 / Chapter Q's fall foliage ride. Contact Jack or Teresa Kistler from Chapter Q for more information about this ride

Oct 12<sup>th</sup> / Lynn Joynt's birthday

Oct 13<sup>th</sup> / Jerold Shook & Bob Davis share this date for their birthday (I'll let you guess which one is the oldest)

Oct 16<sup>th</sup> / chapter dinner ride...Not sure who will be leading this one but I'm sure our fearless leader will give us more information as it becomes available

Oct 25<sup>th</sup> / Halloween Party...more information to follow

That's all for now so until then...ride safe



Mary Mazur  
Chapter A Newsletter editor



# Chapter B – DeSoto

**Senior Chapter Directors**  
**Allen & Lee Ann Robertson**  
 785-979-4831

**Ass't Chapter Director**  
**Paula Aiken**  
 785-842-8503

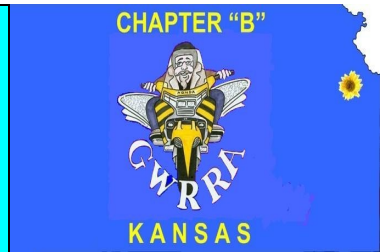
**Chapter Educator**  
**Eric Wadman**  
 913-219-6678

**Chapter Treasurer**  
**Ed James**  
 816-225-2679

**Chapter Couple**  
**Steve & Brenda Milam**

**Chapter MEC**  
**Joe Magnant**

**Chapter Editor**  
**Paula Aiken**  
 785-842-8503



Everybody loves a parade and Chapter B is no exception. On August 30 Johnny and Sharon Crow led a breakfast ride to Pegah's in Shawnee where twenty-two members enjoyed great food and fel-

lowship. Then eighteen members headed back to DeSoto to participate in the DeSoto Days Parade. This always proves to be a great opportunity to showcase our group since we hold our monthly meetings there. Members had a good time showing off their bikes and Governor Brownback even found time to walk through the group and shake a few hands.

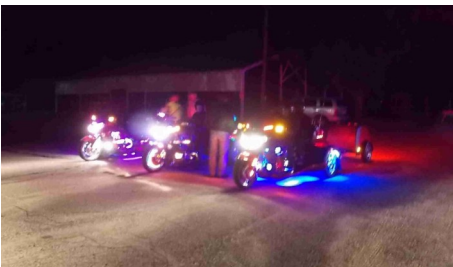
Mick Schurer made arrangements for the September dinner ride to Guy & Mae's Tavern in Williamsburg.



Guy & Mae's Tavern is one of the Eight Wonders of Kansas Cuisine because of their tender ribs that they serve wrapped in foil and newspapers. Many of

the twenty-four Chapter B members present indulged in those delicious ribs.

The highlight of the month was the Kansas District Convention attended by fifteen Chapter B members. After a very cold start on Friday, the sun came out and warmed us up on Saturday. Several members enjoyed the trolley ride through Abilene and learned new facts about the city, while



others had a fun time exploring the Russell Stover gift shop. Members rode in the light parade and Chapter Director, Allen Robertson won the people's choice in the bike show as well as first place in the Valkyrie category.

It was wonderful to watch the Kansas Twisters Drill Team and several Chapter B members tested their driving skills as they maneuvered through the maze. Trikes and bikes did well as they sailed through the course without knocking over the cones.



Chapter B members were happy to receive their new shirts and will be showing them off at upcoming events.



- Chapter B events for October:
- October 2 - Dinner Ride
  - October 4 - Fall Color Ride
  - October 9-12 - Barber Museum
  - October 16 - Chapter Meeting
  - October 25 - Breakfast Ride & Halloween Party

Safe travels,  
 Paula Aiken

## Chapter C - Topeka

### Chapter Directors

Ron & Marjie Crawford  
785-764-0626

### Asst. Chapter Directors

Don & Brenda Williams  
785-537-1988

### Web Master

John Gull  
785-266-6735

### Chapter Educator

Open

### Treasurer

Sandy Davis  
785-691-7000

### Chapter Editor

Don Williams  
785-537-1988



September started off hot for our supper ride to McFarland's on the second. Most all showed up in cars. The only two bikes were Al & Sandy Davis. Brenda and I made it most of the way on our trike but ended up riding to supper with John & Teresa Gull in their car as we were leaving the next morning early and dropped our trike off at their house. We had 10 people in attendance with excellent food as always. We got lucky when the waitress remembered Al from a previous outing and didn't ask management to have us leave, however she did warn the others at the table to keep an eye on him and that she was going to also. There was one couple that tried three different tables before they got far enough away from us for comfort. We weren't sure if somebody forgot to shower or put on antiperspirant or what it was since we weren't even making our normal amount of noise. Normally I don't mention rides that aren't related to GWRRA in some way or another but I am going to make an exception in this case. As stated above Brenda and I were leaving early the morning after our supper ride on a trip with John & Teresa Gull so they were kind enough to invite us to spend the night and save us the extra hour of riding home and another hour to get to their place. This was a God send since we woke up to it raining pretty hard. The trip had been "meticulously" planned with the distant destination of Destin, FL. John had a good friend that retired to Destin and had invited him down since he loved the area and was proud of it. John didn't make it down before his friend died suddenly, so the ride was basically a tribute to his friend. We decided to eat breakfast prior to leaving in order to give the rain a chance to move on (modification 1). After breakfast the rain had almost stopped so we put on rain gear and hit the road heading south out of Topeka (modification 2). Our initial destination was someplace between Topeka and Ft. Rucker, AL where we had planned to tour the Army Aviation Museum and also allow Brenda and I to visit our old stomping grounds, since I was stationed there for a total of eight years, during my

army career. We also managed to ignore Susan Drake in Lyndon on the way by, she was waving at us and we just kept going since none of the four of us saw her. When we finally were able to skirt south of the rain and head eastward we were almost in Oklahoma so according to Garmin it was faster to go straight to Destin instead of through Ft. Rucker (modification 3). As we were riding south of Fayetteville, AR and I was given the opportunity to use three of Bill Tucker and Rick Stevens teachings from the trike course, all at the same time: emergency braking, quick zig zag and as Bill says squashable or not squashable (don't think that's a word). Anyway, I started around a set of double trailers at about 70 miles per hour on the interstate and there were two pieces of wood that appeared to me to be table legs. I hit the brakes zig zagged as close to the semi as I dared then ended up catching the end of one of the pieces with my left rear tire tweaking the wheel a bit and scaring the devil out of me. John said the wood went about 25 feet in the air. This constituted a stop in Russellville at the Honda dealer to see if I needed to buy a new wheel. I was lucky it didn't need any repairs or replacement (modification 4). Shortly after leaving Russellville Teresa's headset quit working. After switching cords and trying other fixes to no avail we ended up stopping at a Honda dealer in Hattiesburg, MS to see if we could purchase an intercom cord for the rear of the bike. They didn't have one but did have a used headset so we tried the mic from it and that was the problem (modification 5). After getting the communications fixed the rest of the ride to Destin was uneventful. We spent around 24 hours there (early afternoon to early afternoon) and had a blast with great food and playing tourist without the crowds. John & Teresa took a helicopter ride along the beach and got to see several sharks, turtles and dolphin plus the pilot actually gave them a little longer ride than they paid for.

*KSC Continued*

It was the first time Teresa has ever flown in a helicopter and was as happy as a lark when she got back. We ended up reversing the ride back through the Ft. Rucker area spending the night and finding out the museum is closed on Sundays so we just ended up spending the night in Enterprise, AL and leaving for home the next morning (modification 6). We did manage to see the only statue for a bug in the United States, better known as the Bole Weevil Monument. This is to honor the bug for messing up the ability to grow cotton in large amounts in the area forcing the farmers to switch to peanuts instead, which turned out to be the best crop ever for the area. The trip from Enterprise home was uneventful and very enjoyable other than being hot. The moral of this story is when you leave on a long ride be flexible and things should still work out in the long run.

While we were off on our “excursion” Ron & Marjie held a reception at their home on the 6<sup>th</sup> of September for Marjie’s graduation for her associate’s Business degree. Congratulations Marjie! Ron said the party was a success with perfect weather and lots of friends and family. They had visitors from Chapter C, their church, swim club and friends and family from all over. Their girls provide the food and took care of the work for getting things organized for the party

The District rally was held the 12th and 13th in Abilene with good representation from Chapter C. We had 11 members in attendance and as seems to be the trend we made a good showing with walking away with prizes even though we got off to a slow start with many prizes going to other people. Then we caught fire when the money started to come into play. Ron won \$123 in 50/50, Teresa took another \$49 from 50/50 and Brenda took credit for \$150 from the grand prize drawing even though my name was on the ticket as the seller worth \$50. For those of us in attendance we aren’t sure who could yell the loudest or quickest when their numbers were called. Personally I think it is Ron since as we all know his hearing isn’t the greatest but he sure heard when they called his number, but then again Teresa was a very close second in that regard. Teresa also came up with the idea to bring a container full of taffy to sell guesses of the total number of taffy pieces. The money earned went to support the Couple of the Year program. It was pretty successful as it brought in over \$56. It turned out to be a bit weird as Jack Kistler said he was going to win because he hated to lose at anything. When the tickets were checked, he was the only one to guess the exact number.

Friday started off with rain/drizzle and clouds but they cleared out later in the day and Saturday was sunny and cool which meant most people were not miserable. The chapter managed to cover all the time slots for registration thanks to the draft that was overseen by yours truly. I managed to draft Ron for the last shift on Friday (next time he’ll learn not to sit right in front of the registration area).

On Saturday Brenda and I were headed to Abilene for our morning shift and saw a Goldwing on the side of the road (I know that’s a very rare site). We stopped to see if he needed any help and he said he had been looking for gas for 50 miles and hadn’t seen any, which isn’t surprising as foggy as it was, so I ran to a gas station and got him a couple of gallons for his dry bike. I cannot believe how well convenience stores like their plastic gas containers but when they have you it doesn’t much matter. John and Teresa were kind enough to sit in for us for about 20 minutes and even missed the twisters performance, so John and Teresa get a huge thank you from us.

Next year’s rally will be at the Best Western in, I think, Park City. More information will follow at a later date. The district is having a contest for naming the theme. I can’t remember the date for closing entries but it’s near the 15th of October so I would recommend you get them in by the 10th. The entries can be e-mailed to Bill Tucker at [wtucker1@cox.net](mailto:wtucker1@cox.net).

On Sunday the 21<sup>st</sup> after the worst breakfast I can remember in many years (I won’t mention the restaurant since the food is normally very good) six of us on 3 bikes rode from Topeka to Wamego for the district “sandwich ride”. There was a pretty good showing from the District and the stories were plentiful along with the fantastic weather. Since we had been in Topeka for a couple of hours prior to riding to Wamego we cheated and stopped at the Cream Kup for sandwiches, so the whole day wasn’t spent with bad food. After a few hours of conversations with many people we departed for home and it was naturally via Cream Kup for ice cream. After the ice cream John & Teresa Gull and Gary and Susie Drake headed east and Brenda and I headed west for a relaxing remainder of the afternoon.

Anniversary  
26 Rick & Rita Thompson

*Don & Brenda Williams*  
*ACD/Newsletter Editors*

# Chapter F - El Dorado



**TBA**  
**Chapter Directors**

**Asst Chapter Director**  
Steve & Lajuana Pena  
316-250-4450

**Chapter Educator**  
Russel Harold  
316-648-4714

**Chapter Treasurer**  
Gene Shannon

**Chapter News Letter Editor**

**Chapter Couple**  
Rick & Brenda Kistler  
316-259-8920

**Chapter Scrapbook**  
Rick & Brenda Kistler  
316-259-8920

**Chapter MEC**  
Rick Kistler

Greetings All,

I'm (Bill Tucker-District Editor) writing this article in behave of KSF as they do not have a Chapter Director yet.

They are active and meeting the fourth Tuesday every month, brown bagging it at 6:00pm ,followed by the meeting at 7:00pm. They always have a neat game to participate in and WOW, the desserts they take turns bringing is second to none.

**They have changed their meeting place.** They will meet at the Oil Grade School (I'm not sure if it is a grade school or middle school) located just about one block west on 6th street from the fire station, their former meeting place.

Enter the school on the west side. Plenty of parking.

**Don't forget, Brown Bag, or you might get hungry before the meeting is over.**

They are still planning to have their Christmas dinner this year but that location has moved from Burns to Cassody Community Center. It is the same building that the Shannon's had their 50th anniversary celebration. Sorry I don't have the date or exact address for that event.

Contact Gene Shannon or Rick Kistler for more information.

Please support this chapter.

Thank you!

Bill





**KS-H Newsletter  
October 2014**

<b>Senior Chapter Directors</b> Terry & Judy Mann 620-728-9320 remotemann@gmail.com	<b>Asst Chapter Director</b> Dale & Georgeanna Tritsch 620-921-5941 dalet@cox.net	<b>Chapter Educator</b> Marv Ayres 620-241-2499 ayersmjta@cox.net	<b>Chapter MEC</b> Bill Watts 620-728-9320 watts_bill@yahoo.com
<b>Chapter Treasurer</b> Chris & Janice Scheurer 620-899-5772 c.scheurer@cox.net	<b>Chapter Editor</b> Dale & Georgeanna Tritsch 620-921-5941 dalet@cox.net	<b>Chapter Scrapbook</b> Ann Whithorn 785-493-1541 izzy2freckles@hotmail.com	<b>Chapter 'H' Couple of the Year</b> Dale & Georgeanna Tritsch 620-921-5941 dalet@cox.net

Our regularly scheduled gathering is 7pm on the 4<sup>th</sup> Thursday of the month.  
 We go to the Sirloin Stockade on 17<sup>th</sup> street in Hutchinson, KS (just a little west of 17<sup>th</sup> & K-61 Hwy).  
 We begin the feeding frenzy at 6pm.

From your Chapter Directors



Terry & Judy Mann

We started the month with a great turnout for a Friday evening ride to the Lumberyard Steakhouse in Zenda on September 5.

The Gwrra Goldwing show at the Kansas State Fair was on Sunday Sept. 7, had 36 bikes on display, also a good day to recruit new members.

The next weekend the Gwrra District Convention in Abilene had 24 Chapter H members in attendance. Lots of great fun was had by all.

On Sunday September 14th we had a good turnout for a benefit poker ride and auction to help the surviving children of the Shellenger couple that were killed in a freak accident between a motorcycle and careening trailer, over \$29000 was raised.

September 20th we did a breakfast ride to Perkins in McPherson and a scenic ride afterwards.

On Sunday September 21st we joined all the Gwrra Chapters in Kansas for a ride to Wamego and toured the Wizard of Oz museum after lunch.

KSH Continued

The last weekend will see several from our Chapter going to the Gwrra Oklahoma district convention in Shawnee, OK.

Thanks

Terry and Judy Mann, senior directors of Chapter H.

From your Assistant Chapter Directors



Dale & Georgeanna Tritsch

How does a chapter gathering become fun? Member participation. Get involved. Bring forth ideas for Fun, Safety, and Knowledge. This is not a political organization; this is a family oriented organization. We all can give input and be heard. Just as in any family there may be a little dissention, but we always work it out.

Our gatherings/meetings need not be just someone reading something but should be interactive and fun. Who says we cannot have games? Short games are fun and stimulate our thinking. If you have something to contribute, bring it along. Rides need not be choreographed, they can be spontaneous. Think up a ride and bring that idea. If you do not want to lead a ride, someone will. Every ride does not have to be a "let's go eat" ride. However we all know that stopping for fuel and ice cream is a necessity. There are many sights to see, museums, other rides to join, rallies, visiting other chapters, and the possibilities are endless.

Let's always welcome others to attend our events. That is how we meet new friends and learn new things.

Let's do things together and keep our chapter strong.

Send your photos and descriptions or short article of what you have been doing to Ann Whithorn [izzy2freckles@hotmail.com](mailto:izzy2freckles@hotmail.com) so she can add it to the chapter scrapbook. Also send it to Dale Tritsch [dalet@cox.net](mailto:dalet@cox.net). Even a short ride for ice cream or pleasure would be appreciated.

From your Chapter Educator



Marvin Ayers

September is almost gone, the Kansas Rally is behind us, yet our journey with Chapter H continues. Have you noticed being a member of Chapter H is like being on a long motorcycle ride, there is always a new adventure around the next twisty. A Chapter is only as active as the membership, let's keep our Chapter active. Join the rides and take the training offered by GWRRA.

Continued

*KSH Contined*

GWRRA and Chapter H Officers realize the importance of training and safety. As Rider Educator I will strive to see that Chapter H members have the opportunity to participate in any and all training offered by GWRRA. If you do not see the training you want or need make your wishes known, I'm sure that training can and will be offered. As a Rider Educator I have a mentor in District Educator Bill Tucker and have no qualms in yelling "HELP!" when I need it. So my friends step up and take the training. Gear up, throw a leg over, trust in your training, and enjoy the ride.

Marv

From your Chapter MEC



Bill Watts

Greetings my GWRRA family. Wow, what a busy past month, and month it has been so far, but I know one thing for sure I am enjoying every minute of it, well almost every minute of it anyway! Another KS District Rally has come and gone and I hope each of you that attended had as much fun as I did, as it is always great to be able see all the great extended family members we have from around the region and from other regions as well. I want to thank each and every one of you from Chapter H that attended and supported the rally and I think I can speak for all of your chapter officer's that once again you made us proud, not only each and every one of you but our chapter as well. Because I believe that Chapter H is and continues to set very good examples for other chapters to work at duplicating and that continues to be a good thing because GWRRA is about supporting each other, district and region wide, and even national. You all continue to find, invite, and sign new members. Our membership is increasing and I get to keep paying some membership dues and trust me I am not complaining about it either. I gave each of you a challenge and you all are stepping to the plate and holding me to it and I thank you for this and what these new members will soon learn is that they are now in an organization of some of the greatest friends they could ask for and also share the same passions to gain knowledge, be a safer rider, and have as much fun as they expect to have.

Chapter H had six of its members attend the Colorado Dist. rally August 21st-23rd held in beautiful Breckenridge, CO. The six members were Jeff and Ann Whithorn, Dale and Georgeanna Tritsch, and Bill Watts and Sarah Taylor. The weather was a perfect 65-70 degrees while it was about 100 here, but of course like all good things it had to end and we had to return Kansas heat as it was 39 degrees on Sunday morning when we left Breckenridge and rode straight into triple digit temps. Talk about going from one extreme to the other, it was about Burlington, CO when I realized I wanted to turn around and go back but as we all know those same temps will be here sooner than most of us will be ready for them. That is why I am encouraging all of you to get out and ride, take advantage of some of our chapter and other chapter rides. We, like many other chapters, still have some great and fun rides coming up. If you can and have the time, and I will borrow a line from Marv here (Throw a leg over and enjoy the ride) Thanks Marv. While on the subject of rides, if those of you thinking about going on the ride Oct. 17<sup>th</sup> -19<sup>th</sup>, please take a look at the e-mail I sent to Terry. It will give you an idea of some of the planned things we will be doing and as many of you know, we always seem to find a few more along the way.

Continued

*KSH Continued*

And before I close I would also like to give a big heartfelt Thank You to all of the Chapter H members who participated in the Schellenger benefit ride this past Sunday 09-14. We helped raise a sizable sum of money to help these two young children whom tragically lost both their mother and father last month. It was an awesome showing from motorcyclists from state wide and other states and it showed the willingness of not only our chapter but others as well to come together and support a worthy cause.

Have Fun and Ride Safe!

Bill Watts

Chapter H MEC

From your Chapter COY



Dale & Georgeanna Tritsch

We were with the group that went to the KS District Ride to Wamego. Doris Schoeck said she counted 32 for the picnic. 26 people went to the museum. We saw and visited with many friends who we do not see often enough. We also met some folks who are interested in joining GWRRA. I introduced them to Bill Watts who told them all about GWRRA and chapter H. Bill always carries info to give out with him. (I need to restock my trunk)

We really enjoy meeting people and finding out what their interests are. It is amazing how many things we all have in common and how much we can learn just by interacting with others. The GWRRA family is one of the best and easiest to interact with and learn from. (I was told not to use a preposition to end a sentence with, but it is better than letting my participle dangle)

A friend of Georgeanna's, Mary Ann Ross, rode with her in the van. Mary Ann commented on how nice a group we all are and fun and ornery. Mary Ann told Georgeanna that any time she wanted some company on our trips to just call, that she would like to go.

Georgeanna is one who cannot ride far but enjoys going and seeing everyone. There are a lot of others who feel the same I suppose. That is why anyone who cannot or doesn't want to ride a motorcycle but wants to go along is always welcome to ride in the van.

I don't know how national looks at it, but if I have to give up or sell my Wing, I still want to be part of this organization. The day will come for all of us, but we should keep the spirit of GWRRA and go however we can.

We appreciate the honor of being KS-H COY

Dale & Georgeanna Tritsch

Continued



*KSH Continued*

From your Chapter Newsletter Editors



Dale & Georgeanna Tritsch

The August 28 gathering was a fantastic turnout and a lot of fun. We had a total of 31 at the meeting, 25 from KS-H and 6 from visiting chapters. We were honored once again to have visitors who wanted to know what GWRRA and chapter H is all about.

We gained two new recruits to GWRRA and KS-H. Bill Watts honored his commitment and paid a year membership 315036 to the two members who signed up our newest GWRRA members. Thanks to Jeff & Ann Whithorn and also Don & Jan Schroeder for helping build our membership base.



Terry Mann, our fearless leader, who uses two or more GPSs to guide us on our rides, and still manages a wrong turn or U-turn, was presented with an official hat to designate his proficiency in direction calculation.



A few photos from the KS District Ride to Wamego





KSH Continued



# Member Rides

## Daryl & Nita Regier

Deal's Gap heading for Weekend at the Opry





*KSH Continued*



Opening Ceremony

**Don & Jan Schroeder**



At Fat Boyz just for the ride





KSH Continued

Blue Ridge Parkway



Mt Nebo, AR

18% grade with 9 back to back sharp switch backs. Awesome. Friday morning September 19.

# Bugsy

I have been busy traveling with my chapter H family. This month I am with Leon & Ellen Deges. I have traveled to other chapter meetings, went on rides, helped fix a blown tire, and got a big hug from Ellen.





KSH Continued

I went to the Rolling Hills Zoo with Leon & Ellen



At the zoo



Are we here?



Chow time



I'm hungry



Mmmmm good



Where are the carrots?



I wuv you



*KSH Continued***Arkansas Ride Oct 17 to 19**

At this present time, we plan to depart from Kmart parking lot Friday morning the 17th at 7:00 am. accuweather says it may be a little chilly that morning so please keep this in mind when dressing for the ride that morning, but the afternoon temps look great.

We will ride as far as Harrison, AR on Friday as trying to make it to Mountain View, AR would make for a long day on the bike and we want everyone to relax and enjoy and have fun on this ride.

There are a couple of different hotel options in Harrison. There is the historic Hotel Seville (870)741-2321 and at the time of this e-mail they only have 5 rooms available for this weekend as there is also a fall festival in Harrison this same weekend, so if you are thinking that you may want to stay here for the experience of staying at the Seville I would suggest you get a reservation made soon. Nothing or no one says we have to stay in the same hotels. Remember this is as much your weekend trip as it is for Sarah and I, so none of us will be offended with what you choose. As I said it's about having some fun.

The other hotel is the Days Inn and I can say it's a pretty nice hotel. We stayed there last year when we went down there and the staff was friendly & helpful. They even have places we can secure our trailers; as I don't plan to pull mine on the twisties on Saturday. The number for the Days Inn is (870)391-3297 The rate is right at \$60.00 per night with an AARP membership or GWRRA, or perhaps some of you may have some other type of discount that would apply and we all know every and any little bit helps.

After arriving in Harrison and if we still have enough afternoon daylight, I would like for all of us to ride out to the Maple Grove Cemetery which is not far from town. Now I know you must all be thinking what the heck is he taking us to a cemetery for and the answer is this, they have some of the most gorgeous sugar maple trees you will see in fall colors and it is a great opportunity to get some photos of your bike and each other under them or as a backdrop. After that we can kind of settle in for the evening and as group decide on supper and I bet after supper we can find some Ice Cream somewhere.

On Saturday morning we will depart by 8 or 8:30 am for Mountain View, AR. We will be taking what is called the Mountain View Run and believe me this is a fun ride with plenty of scenic curves, 602 of them to be exact and fuel stops will not be an issue as there are several on this route. We will spend some time in Mountain View. They have some great little shops on main but the draw to this little town is that it is the Folk Music Capital of the world, and the musical entertainment is priceless; and the locals are very friendly, it's almost like a Norman Rockwell kind of place. We will depart Mt.View early enough that we are not riding these curvy and unfamiliar roads without daylight and get all of us back into Harrison with daylight to spare.

We will figure out our evening plans from there as group. As far as the route for returning home on Sunday, we as group will look at some options or suggestions as every ones input will be welcomed as long as what is decided gets us home safely by dark. What I want to stress to everyone is that this is as much your ride as well and if you have an idea share it as some of the funnest things we do in life are often really unplanned. Remember it's all about Friends (Family), Fun, Safety, Knowledge. I look forward to taking this trip with each of you.

Bill Watts



# Chapter P – Wichita

Website <http://autos.groups.yahoo.com/group/chapterp/>

## Chapter Director

Dave & Sherri McDonald  
316-650-3238



## Asst Chapter Director

Dennis & Kathy Chesnut  
316-214-1995

## Senior Rider Educator

Rick & Carolyn Stevens  
316-683-1138

## Chapter Couple

Dennis & Kathy Chesnut  
316-214-1995

## Web Master

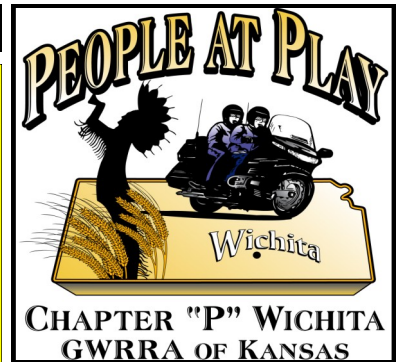
Dan & Tammy Vickers  
316-524-7808

## Member Enhancement

Glenn Bindley  
316-880-2396

## Treasurer

Carolyn Stevens  
316-683-1138



**Meeting Night** -Friday, October 12th - Brown Bag at 6:30pm Meeting 7:00pm Derby Church of Christ 225 N. Derby St, Derby Ks. 67037 in the fellowship hall at the south end of the building

Rides last month:

Kansas State Fair



Chapter P at the Kansas District Convention:

Our chapter was in charge of the bike show, Sherri McDonald and Kathy Chesnut were responsible for the vendor walk and Rick Stevens taught Rider Ed courses. All actives went well. I would like to say a special "Thank You" to all who helped in my absence. Without all of you events like this would not be possible.

Congratulations to Rick for Senior Rider Educator award!

Denny The Engineer





*KSP Continued*

Rides

Chapter P held a dinner ride on Friday, September 19 at Sweet and Spicy in Howard, Kansas. Some members of chapter A, F and Q either rode along with us or met us at the restaurant and all had a great time.



The second dinner ride of the month was held on September 26 to Stearman restaurant in Benton. Special thanks to Joe and Janet for putting on this ride.

**Chapter P Fall Ride**

The Chapter P Fall ride will be held on October 17, 18, 19 2014. The ride will be leaving the Walmart Parking Lot located at Kellogg and Greenwich road on Friday, October 17. Helmet time is 8:30am. We will be riding the back roads through Kansas, Oklahoma and Missouri. We will arrive in Eagle Rock, Missouri late afternoon Friday. Some lodging is still available at our house in Missouri and the Mooney's house in Arkansas, first come first serve. Other lodging can be obtained at Lazy Eagle Resort, Missouri 417-271-3390.

**Lazy Eagle Resort**  
 30986 State Hwy. 86  
 (MO Hwy. 86 at Table Rock Lake)  
 P.O. Box 141  
 Eagle Rock, MO 65641



War Eagle Mill's 18-foot undershot water wheel rotates when water strikes the paddles or blades at the bottom of the wheel. The force of the water's movement drives the blades of the wheel, which rotates a turbine that drives the mill's machinery. This, in turn, allows the millstone to grind grain into flour.

*KSP Continued*



**War Eagle Mill**

11045 War Eagle Rd | Rogers, Arkansas  
72756

[Map & Directions](#)

**Open Daily:** March - Jan. 1 | 8:30 am - 5:00 pm

**Winter Hours:** Jan. 2 - Jan. 31 | Closed.  
Feb. open Friday - Sunday | 8:30 am - 5:00 pm

1-866-492-7324 | [Contact](#)

Saturday evening we will be traveling back to Holliday Island Arkansas for a cookout and fun.



We will be returning to Wichita on Sunday October 19<sup>th</sup>. For those planning on attending Contact Sherri McDonald at 316-650-3238 or [dlovessh@sbcglobal.net](mailto:dlovessh@sbcglobal.net)

Everyone have a safe month!

David & Sherri McDonald

Directors Chapter P

# Chapter Q – Wellington


**Senior Chapter Directors**

Jack & Teresa Kistler  
620-782-9636

**Chapter Treasurer**

Becky Mangus

**Chapter Couple**

Steve & Sue Boone

**Chapter MEC**

Ron & Judy Eggleston

**Ass't Chapter Directors**

Bill & Sheila Tucker  
316-777-1052

**Chapter Educators**

Open



September was a busy month for all of us, with lots of chapter rides and our District convention. Some of you even attended the Oklahoma District convention.

This years State Fair ride was an overwhelming success, with 36 bikes and over 40 people. Not sure how many new members were signed up that day, but we do know that Rick Kistler got his bike sold. Way to go Rick! The weather this year for the fair was perfect, not to hot, not to cold just very enjoyable.

We want to congratulate Rick and Brenda Kistler; they are this years recipients of the Frank Patton Award. The two of them have been very active within the organization since they joined and continue to help promote GWRRA where ever they go. CONGRATULATIONS!

Jack and Doris and all the district staff did a wonderful job once again with the District Convention. Thank you to each and every one of you for the dedication that you put forward for all the members.

This years winners of the Engine races where Chapter "A" on Friday it was a tough race, but Ann Gillett pulled it our for the win for her chapter. On Saturday Chapter "Q" finally got to shine. We had a close one; however Jim Owens hung in there and brought home the second day title for our very own Chapter "Q". WooHoo Jim!!

We would like to say Thank You for the honor of being appointed Senior Chapter Directors at the Rally. We will continue to do our best for not only our Chapter members, but also the GWRRA organization as a whole. Thank You All once again.

One other ride that looked like a good time was the Dist. Ride to Wamego. Jack and I were unable to attend, but from the pictures we've seen it looks like those that did get to attend had a nice time.

Next month we will let you all know how the Fall Foliage Ride went. Look forward to seeing many of you there.

Until the next time,  
Ride Safe,  
Jack and Teresa Kistler

October Birthdays: Sheila Tucker 12<sup>th</sup>  
Rodger Webb 12<sup>th</sup>  
Gayle Webb 12<sup>th</sup>

Anniversaries: Vern & Zola Trenkle 17<sup>th</sup>  
Dick & Barb Shaw 25<sup>th</sup>



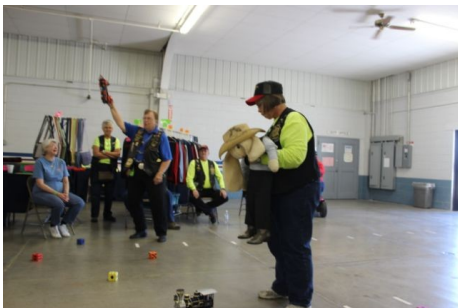
The 'Q' Crew Photo Album of Kansas District Rally



The Steam engines races were a hit. Even the mascots were involved!



The Winner is Kansas Q





KSQ Photo Article Continued

*Drakes at Closing Ceremonies.*



*Rick & Brenda Kistler's Waiting for Start*



*Rick Stevens Appointed Senior CE KSP*



*Jack & Teresa Kistler Appointed Senior CD KSQ*



*The Frank Patton Outstand Service Award Presentation 2014/15.  
And the winner is.... Rick & Brenda Kistler, KS-F*

*1. Jack & Teresa waiting to present traveling plaque.*

*2. Hugs all around .*



*3. Brenda responding with tears of joy!*

*4. Standing ovation.*





Kansas Couple of The  
Year 2014



**Steve & Terri Bockhaus**

**KS-A**

# Kansas Chapter Couples 2014

**CHAPTER A COUPLE OF THE  
YEAR**

**Robert & Barb Brown**



**CHAPTER F COUPLE OF THE  
YEAR**

***Rick & Brenda Kistler***



**CHAPTER B COUPLE OF THE  
YEAR**

***Steve & Brenda Milam***



**CHAPTER H COUPLE OF  
THE YEAR**

***Dale & Georgeanna  
Tritsch***





# Kansas Chapter Couples 2014

**CHAPTER P COUPLE OF THE YEAR**  
*Dennis & Kathy Chesnut*



**CHAPTER Q COUPLE OF THE YEAR**  
*Steve & Sue Boone*





# The Kansas Twisters

## Drill Team

Steve Bockhaus, Team Captain



I can only start this article one way --- Good Job Twisters!! I am so very proud of being a part of this team. If you did not see the performance at the Kansas District Convention in Abilene, then you do not understand the statement. This team did a very good job. I also want to thank everyone one who came to the Abilene High School to see us. This year we had to move the range away from the convention site. This move did not stop people from watching. I think the audience was even bigger than last year. I even talked to some people who told me that the Drill Team was why they came to Abilene. Once again, it shows that Drill Teams increase attendance.



*Twister's Continued*

Just before the performance, the team gave a short trailering demonstration. This just shows that even with a trailer, these moves can be completed.



The team also recognized the Lady Riders who rode to the convention.



After the performance, the team set up a “Maze” on the range and challenged people to solve it by riding it. There were a few who attempted it. But all solved it and stated that they enjoyed riding the “Maze”. If you missed it, we may set it up again at another time.

I want to include something that Terri “Twisted Lady” Bockhaus wrote. I think it says a lot about the bond this team has-----

At chapter H's meeting last night, stories were shared about our great Gold Wing family, and how we are always there for each other. It made me realize how fortunate I am to be a part of not only the greater Gold Wing family, but of the smaller Twister team. Many of you know that while at Wing Ding this year, Steve Pena blew a fork seal. Thank goodness it happened AFTER our drill team performance. He was able to get it fixed prior to leaving Madison. However, after returning home, it leaked again. I am positive he was none too happy, having to pay to have it fixed twice. Anyway, while it was in the shop, Rick Kistler loaned him his 1500 wing, so he wouldn't have to miss practice. (Rick has an 1800, but has been trying to sell his 1500.)

*Twister's Continued*

While Steve P.'s bike was still in the shop, my starter went out, AND my fork seal blew. Bob Brown spent several hours helping my husband to take the old starter out, and several more hours putting the new one in a few days later. He then patched my fork seal so I could practice with the team the following day without getting covered with oil. (Rick was willing to loan me his bike as soon as Pena's was fixed.)

The next day during practice, right in the middle of a routine, Bob yelled at me to pull off the range. I knew there was nothing wrong with my driving, so it had to be something else. He told me to shut off my bike, and get off. I couldn't figure out why he was ready to deck me, but I got off the bike, ready for anything. He pointed to the puddle of gas under my bike. After the rest of the team stopped, he walked my bike all the way across the range to the little bit of shade available in the late afternoon. Tools appeared from all the saddle bags.

Suddenly, Bob walked away holding his face. I soon realized that he was more than just distressed. He had been sprayed in the eyes by the busted fuel hose. It was a hot day, so we had plenty of water on hand. Larry and Mary Mazur and I spent the next 30 minutes flushing Bob's eyes. He never complained as the cold water dripped down his back and filled his jeans. (This was prior to the ALS ice bucket challenge.) The guys had the fuel leak fixed before we drowned Bob, and we were able to finish our practice.

"**T**ogether **E**veryone **A**chieves **M**ore" is the true definition of what a team is. It makes me very proud to be a member of the Kansas Twisters Motorcycle Drill Team. Thank you to all the Twisters for your great teamwork!!!!

***Terri Bockhaus***

Until we meet again, remember

Riders Education Saves Lives, Not Loud Pipes

Steve – Twisted "One"- Bockhaus

Captain – Kansas Twisters Motorcycle Drill Team



---

# GOLD WING ROAD RIDERS ASSOCIATION KANSAS DISTRICT

## 2014-2015 SCHEDULE OF EVENTS Kansas - Region - National

November 15, 2014:           Region Staff Meeting, Marshall, TX

## 2015 SCHEDULE OF EVENTS Kansas & Region

January 16-17:           Kansas Mid Winter Rendezvous, Park City, KS  
March 26-28:           Louisiana District Convention, Lafayette  
April 16-18:           Region 'H' Rally, Marshall, TX  
May 4/30-5/2:           Texas Convention  
September 3-6:        Wing Ding  
September 18-19:     Kansas Convention Best Western Hotel, Park  
City KS.

# SUPPORT OUR SPONSERS



Products that Exceed Your Expectations

9:00 - 6:00 pm M-F (open til 8 pm on Thurs) • 9-3 Sat.



**Dan's Cycle**

ATV Specialists  
Service - Accessories

Kansas largest supply of parts & accessories for all makes

7901 N HOOVER RD.  
HESSTON, KS 67062

620-327-5001  
www.danscycle.com



**Action Jackson**  
Automotive & Tire  
620-782-3700

GWRRA  
MEMBER  
SINCE  
1999  
#143053

114 W. K65 Hwy., Udall, Ks. Look for us under the water tower.

Jack and Teresa Kistler, Owners

We also sell Motorcycle Tires and DynaBeads



479-754-8484 Telephone  
479-754-8486 Fax  
horizontrikes.com  
2210 East Main  
Clarksville, AR 72830

Mize Auto Body, Inc.



# SUPPORT OUR SPONSERS

## BIKES AND TRIKES, LLC

**SALES AND SERVICE**



Steve Alexander  
1800 Cypress St.  
West Monroe, La. 71291

Phone: 318-388-0448  
Fax: 318-855-5608  
E-mail: [steve@bikesandtrikesllc.com](mailto:steve@bikesandtrikesllc.com)  
Web: [www.bikesandtrikesllc.com](http://www.bikesandtrikesllc.com)

- California Sidecar Motortrike
- Roadsmith and Champion Trike Kits Sold & Installed
- Tires
- Accessories
- Service on all Motorcycles



## 24/7 KLONDIKE








**102"x132" DECK**

**SPECIALIZED MOTORCYCLE SERVICE PROVIDER**



**Motorcycle Medevac & Transport**

Jim "JC" Culver, Owner  
[klondikemotorcyclemedevac@gmail.com](mailto:klondikemotorcyclemedevac@gmail.com)  
Wichita's Coast to Coast Transport Service **(316) 789-3200**




**Bikes • Side Cars • Trikes • Spyders • Boss Hoss • Scooters to Stallions**

## Merle Snider

**MOTORS INC.**

*Just over the hill from the fairgrounds*

**2301 W. 9th Ave. Winfield, KS**

Ph# 620-221-1030 or 800-748-8430

**\$25,995**



'08 1800 Gold Wing  
8,700 Miles, New Trike

**We have partnered with Motor Trike!**



**Showroom Hours:**  
Mon - Fri: 8am - 6pm  
Saturday: 9am - 3pm

**We Can Turn Your Motorcycle Into A Beautiful Motor Trike!**

[www.merlesnider.com](http://www.merlesnider.com)