

Gold Wing Road Riders Association Region 'H'

The Kansas Winger

The Official Publication of the
Kansas District Newsletter By the
Members of The Gold Wing Road
Riders Association, Region 'H'

Bill Tucker
Publisher

Jack & Doris Schoeck
Directors



Kansas Winger



REGION 'H' GWRRA

Friends for Fun, Safety, and Knowledge

Jack & Doris Schoeck, Directors

Grand Master Riders

Jack #1961 Doris #2389

Kansas Monthly Newsletter



Contents

District Directors Article, Pg 2
 District & Chapter Officers, Pg 3
 Chapter Information, Pg 4
 District Rider Ed Article, Pg 5-6
 "By The Book", Pg 7
 Chapter 'A', Pg 8-9
 Chapter 'B' Pg 10-11
 Chapter 'C' Pg 12
 Chapter 'F' Pg 13
 Chapter 'H' Pg 14-21
 Chapter 'P' Pg 22-23
 Chapter 'Q' Pg 24-27
 District Couple Pg 28
 Chapter Couples Pg 29-30
 Kansas Twisters Pg 31-33
 District Events Pg 34
 KS Rally Flyer Pg 35
 KS Rally Reg Form Pg 36
 Rally Agenda Pg 37
 KS Sponsors Pg 38-39

Greetings from your State Staff!!

Hope all of you are staying relatively cool with all the hot weather we have been having. It is still nice to be able to ride!!

Our first activity coming up in September is the State Fair Day on Sunday, September 7, 2014. If you plan on going to that activity, please be sure to get your Fair Tickets ahead of time. We are to meet at the Hutchinson Airport Parking Lot at 8:00 am and we will leave there to go to the fair as a group at 9:00 am. We will be given parking permits at the Airport. Come join us as this is always a fun day and there are a lot of people who come by our bikes and always ask questions. It is a good way to recruit new members and new friends!!

We are excited as our Convention is getting closer! We will have a lot of fun things to do and participate in and we are really looking forward to seeing a lot of you there! Remember that the convention date is September 12-14, 2014 at Abilene, Kansas. There are a lot of interesting places and things to see in Abilene also. We will have three different times for the Abilene Trolley to take patrons around Abilene to show you all the beautiful homes. The cost of riding the Trolley will be \$3.00 per person and the times of the Trolley Rides are: 10:00 am, 11:00 am, and 12:00 noon. They can only take 30 people per Trolley ride. This is always a popular part of our Convention so there will be sign-up sheets at the registration table. If you want to go on one of these rides, please be sure and sign up. We will also have the normal events, such as the Bike Show, Light Parade, Light Staging and Judging after the parade. We will have our picnic after closing on Saturday evening and the State will be furnishing the meat for that picnic with all of the chapters helping with the other needed items. We will be having a couple of new things going on at the Convention this year that we have not done previously and are excited to share those with all of you. So you will have to come to see what those are!!

There has been a lot of riding statewide by the chapters and state staff. We would like to thank

everyone that participates in their chapters and attend other chapter's functions. This is what holds us together and is a source of a lot of fun!! Keep on doing exactly what you are doing as we are sure every one of the Chapter Directors appreciates your efforts. There are several chapters right now that are planning Fall Foliage Rides, so check out the Web to see what chapter and where they are going.

Remember our East Picnic Ride on Sunday, September 21, 2014 to Wamego, KS. We have the smaller shelter house beside the Small Train Depot reserved from 11:00 to 3:00 pm. It is at the corner of 6th and Pine. So if you go on that ride, we can be there earlier than the 12:30 pm time we are to eat. The Wizard of Oz Museum people were excited we are coming. The cost of going through the Museum is normally \$8.00 for an adult, but if we have 15 or more people going through, then the cost will be \$6.00 per person. They did ask if possible to show your GWRRA Membership card. If you forget they did say they would take your word that you are a GWRRA member. They know not everyone will show up at the same time, so if you go let them know you are part of our group so we can get the discount. There is also a City Museum just east of the Windmill. Information about the cost of that was not furnished and I will have to find that out. Additional information will be given at our State Convention in Abilene, but be sure and save the date as it should be a lot of fun and Wamego people are excited we are coming. Wamego has several good eating places and there will be a display table about the town at our Abilene Convention.

The Oklahoma Convention is the weekend of September 25-27, 2014 in Shawnee, Oklahoma and sounds like it will be a lot of fun. We have a lot of Oklahoma people come to our functions so let's support them at their convention.

Until we see you again, stay cool, Ride Often and Ride Safe!!

Jack and Doris Schoeck, Kansas District Directors



KANSAS DISTRICT STAFF

DISTRICT DIRECTORS

Jack & Doris Schoeck
620-341-0426

ASSISTANT DISTRICT DIRECTORS

Rick & Brenda Kistler
316-200-0726

DISTRICT RIDER EDUCATOR **DISTRICT TREASURER** **DISTRICT PATCH LADY**
Bill & Sheila Tucker **Judy & Ron Eggleston** **Sheila Tucker**
316-777-1052 580-269-1221 316-777-1052

DISTRICT TRAINER **District Rider Coaches** **DISTRICT NEWSLETTER**
Marty & Ruth Dannar **Jim Lamb** **EDITOR**
316-260-5272 **Rick Stevens** **Bill & Sheila Tucker**
Bill Tucker 316-777-1052

DISTRICT COUPLE OF THE **Kansas Twisters** **DISTRICT COUPLE OF**
YEAR COORDINATOR **Drill Team** **THE YEAR**
David & Sherri McDonald **Steve Bockhaus** **Steve & Terri Bockhaus**
316-650-3238 **Team Captain** 316-772-6603

DISTRICT MEDIC FIRST AID **DISTRICT HISTORIAN**
TRAINERS/INSTRUCTORS **Brenda Kistler**
Steve & Terri Bockhaus 316-259-8920
Jack & Doris Schoeck
Marv Ayers

DISTRICT MOTOR AWARENESS COORD. **DISTRICT MEC**
Gary & Susan Drake **Bill Watts**
785-828-4801 620-665-3877

DISTRICT WEB MASTER **FRANK PATTON AWARD 2013/14**
Dale Tritsch **Jack & Teresa Kistler**

Chapter 'A' CD **Chapter 'B' CD** **Chapter 'C' CD** **Chapter 'F' CD**
Rod & Ann Gillett **Allen & Lee Ann Robertson** **Ron & Marj Crawford** **TBA**

Chapter 'H' CD **Chapter 'P' CD** **Chapter 'Q' CD**
Terry & Judy Mann **David & Sherri McDonald** **Jack & Teresa Kistler**

GWRRA Kansas Chapters, Chapter Directors and Get-Together Time & Place

**Feel free to attend any Chapter meeting and introduce yourself.
You will be welcome.**

Call the CD if you need more information about a Chapter activity.
If you are interested in organizing a Chapter in your area,
Please contact JACK & DORIS SCHOECK 620-341-0426
for more information.

Chapter "A"

Rod & Ann Gillett, CD
316-721-0638
Second Thursday at 7:00 p.m.
Bishop's Family Dining
4200 w Kellogg Dr, Wichita
rgillett@cox.net

Chapter "B"

Allen & Lee Ann Robertson, CD
(785) 979 4831
3rd Thursday at 7:00 p.m.
JTs Grill
33255 Lexington Ave., DeSoto
Allen.robertson1@gmail.com

Chapter "C"

Ron & Marj Crawford CD
785-764-0626
Third Tuesday at 7:00 p.m.
Perkins Restaurant
1720 SW Wanamaker Road, Topeka
solpokbluesolpokblue@yahoo.com

Chapter "F"

TBA
Fourth Tuesday at 7:00 p.m.
El Dorado Fire Station
West 6th Ave, El Dorado
moonetoon@gmail.com

Chapter "H"

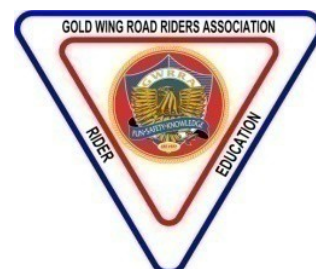
Hutchinson, Kansas
Terry & Judy Mann CD
620-728-9320
4th Thursday 7:00p.m.
Sirloin Stockade
East 17th, Hutchinson
remotemann@gmail.com

Chapter "P"

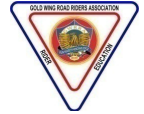
David & Sherri McDonald CD
316-650-3238
2nd Friday at 7:00p.m.
Derby Church of Christ
225 N. Derby St. Derby
In Fellowship Hall, South End of Building
dlovessh@sbcglobal.net

Chapter "Q"

Jack & Teresa Kistler, CD
(316) 651-7423
1st Thursday at 7:00 p.m.
Fabiola's Mexican Restaurant
302 North Washington
Wellington, KS
Actionjackson@wheatstate.com
Note Location & Time Change



RIDER EDUCATION BULLETIN BOARD



District Educators

Bill & Sheila Tucker

316-777-1052

Life Grand Master #242

Life Grand Master #527



Asst District Educators

Jim & Carol Lamb

620-545-8465



CE-KS-A

Larry Mazur

316-688-5696

CE-KS-B

Eric Wadman

913-219-6678

CE-KS-F

Russel Harrold

316-648-4714

CE-KS-H

Marv Ayres

620-241-2499

CE-KS-P

Rick & Carolyn Stevens

316-213-4630

Get ready for 'FUN'. Yep! It is going to happen at the Kansas Convention (actually a rallyJ) "Where the Rails Meet the Trails!" September 12 & 13 in Abilene Kansas.

FIRST- A location change. The Kansas Twister Precession Drill Team will be performing at

The high school parking lot. Directions to the location will be provided at the rally.

Check at the Rider Education booth for additional information.

Here are the Rider Education opportunities during the rally.

Seminars: 'Team Riding' by Marv Ayers; 'Co-Rider 2 seminar' by Carolyn Stevens; 'Motorcycling for Mature Riders' by Rick Stevens.

On Bike Games: 'The Maze Ride'. A non-competitive ride to challenge your skills but having fun doing it. For Bikes and Trikes. Location is at the high school parking lot.

The Level IV breakfast will be held Saturday morning at the Hitchin' Post Café 100 SE 5th St., 7:30am. This year we have a guest speaker that will talk about 'Identity Theft'. Something we all should be interested in because of all the traveling we do on our favorite ride. If you are a Level IV in good standing, pick up your 'FREE' meal ticket at the Rider Education Booth. Space is limited to 50 people. Snooze you loseL.

The escorted Light Parade Friday night will start an

hour earlier, staging at 7:45pm and leaving at 8:00pm. We will have our traditional \$50.00 drawing for participating in the parade.

Want some extra money? We offer you the opportunity to win \$125.00, not once but twice. We are drawing for two winners. Purchase the tickets at the Rider Education Booth. Drawing at closing ceremonies and you MUST be present to win!

Our next riding course is the Trike-Trailing course scheduled for September 6th at our super range in Wichita. Contact me Bill Tucker at wtucker1@cox.net if interested in participating. We would love to have you join us.

This is a good time to clarify a few myths. I've been asked by some members as to why the fees they pay for the riding courses go to national and been asked how much do the instructors get? The instructors get absolutely 'zero' for their time with the participants. They get 'zero' when preparing the range, i.e. painting, cone purchases, beverages and snacks for the classes, etc.. Another words, we are volunteers. Where does the money end up? In Kansas the money goes into the District's Rider Education Fund. National does not receive any of the money.



Next Page

*Educator Continued**Educator Continued*

We have members take a trike course (TRC) or the BRC2 for \$30.00 then follow it up the same year with the Trike Trailering course (TTRC) or BRC2 Trailering (TC) for \$25.00. If they do the same thing next year, it will be \$20.00. And **ALWAYS**, the Co-Rider participates "FREE". Most of you have a Co-Rider so you need to practice your riding with them on board. And they can receive credit toward their level requirements.

Speaking of the level program. Some of our new members have asked me if they can take the course although they are not in the levels program. **ABSOLUTELY!!!** The rider courses are for anyone interested in perfecting and improving their riding skills. That is why we allow non-members to take the courses if space is available. Obviously, our GWRRA family has priority. And **YES**, we would like you to be involved in the Levels program. Level I is 100% Free. Levels 2, 3, 4 have some costs because of the requirements to take a riding course and take a First Aid course. Seminars are always (in Kansas) free.

Anytime you would like to have a discussion about our seminars, riding courses, the levels programs, Medic First Aid, etc, just contact any of the Kansas Rider Education Team. Here is my Super Rider Ed Team: Jim Lamb Instructor, Rick Stevens Instructor, and Bill Tucker Instructor. My front line team members, the Chapter Educators are:

KSA Larry Mazur; KSB Eric Wadman; KSF Russel Harrold, KSH Marv Ayers, KSP Rick Stevens. The MFA Instructors are: Marv Ayers, Carolyn Stevens, Doris & Jack Schoeck, Steve & Teri Bockhaus and Bill Tucker. The seminar facilitators are: Marv Ayers, Carolyn Stevens, Doris Schoeck, Jim Lamb, Rick Stevens, and Bill Tucker.

Hope to see you at our next training session and certainly at the Kansas Rally this month.

"That's All Folks!"

PRACTICE MAKES PERMANENT! YOU ARE WHAT YOU PRACTICE!

*Do yourself and your loved one a favor
Take a Riders course!*





BY THE BOOK

By: Jack Wagner
Region H Trainer



“By the Book” articles are intended to help familiarize GWRRA Volunteer Leaders and Members with the policies, procedures, and information contained in the GWRRA Officer’s Handbook (OHB). A Copy of the Officer’s Handbook can be found at the following Internet website: www.gwrro.org/oconnect/officerhandbook.html
Please feel free to reprint these articles in Region, District, or Chapter newsletters.

How Can I Participate?

In last month's By the Book article, I expressed that we are all Chapter participants. So what does that mean? There are lots of ways to participate in a Chapter. They range from just showing up and taking part in activities to becoming involved as an officer or other team member. There are lots of positions that can be created within a Chapter. In addition to Chapter Director, the other required officer roles that each Chapter must have are Chapter Educator and Chapter Treasurer. While not 'required, every Chapter will benefit from including the other Chapter level offices of Assistant Chapter Director and Membership Enhancement Coordinator. If your Chapter is large enough there could be a multitude of other positions. Every Chapter should have a newsletter editor, but any Member is more than welcome to contribute articles for the newsletter. One of my favorite suggestions is to create a phone tree coordinator - someone to take charge of developing a quick method of contacting Members by phone for sharing time sensi-

tive information. There can be ride or activity coordinators, photographer, historian, technical adviser, webmaster - in fact, if you can come up with a responsibility, you can create a position. I've even seen Chapters with official hug collectors. Don't just create a position for the sake of giving someone a title; make sure the position has responsibility. When Members are included in the operation of the Chapter, they will become much more supportive and less likely to become dissatisfied. I'm not saying everyone should be given a position or that anyone has to do more than just show up and take part. But I think you will find that the more involved you get, the more fun you will have. So talk to your Chapter Director about any area that may interest you. For more information on position description and responsibility, see the Officer Handbook starting on page D-4.

The more you know, the better it gets!

Jack Wagner
Region H Trainer

Chapter A – Wichita

www.geocities.com/gwrrachaptera



Chapter Directors

Rod & Ann Gillett
316-721-0638

Asst. Chapter Director

Marty & Ruth Danner
316-260-5272

Newsletter Editors

Mary Mazur
316-688-5696

Chapter Educator

Larry & Mary Mazur
316-688-5696

Phone Tree

Rod & Ann Gillett
316-721-0638

Chapter Treasurer

Jerold Shook

Chapter Historian

Chapter Couple

Bob & Barb Brown

Hello everyone...

August started out very nice. The weather was cool and nice for riding (which is strange for August in Kansas but who's going to complain) Larry Mazur lead a group of us on a ride up to Cassoday on the 3rd. 7 bikes met @ the Quik Trip @ 61st & I-135 and rode east & got on 254 where we lost Steve & Marty because of a problem with equipment but we picked up 3 more bikes in Benton. The route we took was very nice we went on the south side of El Dorado Lake past the dam. Not a lot of traffic but we did get to enjoy a few curves. If you've never gone to Cassoday on "Biker Sunday" you should try it some month.

I would like to thank Chapter F for having a little place there in town where you can park your bike, have breakfast once you've walked around town looking at all the other bikes and a place to rest. Or you can just hang out and visit with all the other people that come to town

Our monthly meeting was held on the 14th @ Bishops and by my count we had 37 people there so it was a nice group. We were given information on some of the rides people went on during the month of July and some of the rides coming up during August and the next few months. (Chapter Q's ride coming up in October sounds like it's going to be a blast)



KSA Continued

Larry gave a nice lesson about some safe riding tips and then we had a lady with Eagle Med talk to us about what it is that her company does when it comes to transporting patients in a helicopter or fixed wing plane. She explained how much it costs a person if they have to be flown to a hospital and how if you sign up at the rate of \$65.00 a year everyone in your household is covered so you won't get a bill if that service is ever needed. It was very interesting and a few of us went ahead and signed up for the service. I figure it's just like getting insurance on your home, car or motorcycle you hope you never need it but it's good to know you are covered.

Our monthly dinner ride was held on the 21st and was led by Debbie Gattenby...I hope everyone who attended had a good time and I'm sorry that I missed it.

So now let's talk a little bit about what is coming up in September...it's going to be very busy.

6th Trike Trailing class, if you are interested you should contact Bill Tucker

7th State Fair ride.

11th Monthly meeting @ Bishops on West Kellogg (in front of K-Mart) meeting starts @ 7:00 but come early to enjoy a meal and visit with the other members

12th & 13th Kansas district rally in Abilene Kansas

18th Monthly dinner ride this one Joe Gattenby is in charge of more information to follow

That's all for now so until then...ride safe

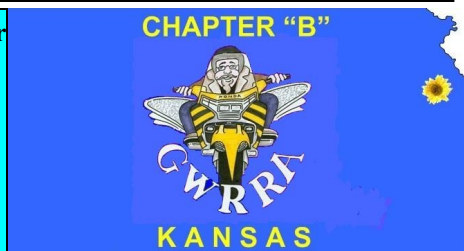


Mary Mazur

Chapter A Newsletter editor

Chapter B – DeSoto

Chapter Director Allen & Lee Ann Robertson 785-979-4831	Ass't Chapter Director Paula Aiken 785-842-8503	Chapter Educator Eric Wadman 913-219-6678	Chapter Treasurer Ed James 816-225-2679
Chapter Couple Steve & Brenda Milam	Chapter MEC Joe Magnant	Chapter Editor Paula Aiken 785-842-8503	



There's nothing better than fresh produce from the garden and the month of August found Chapter B journeying throughout the surrounding area for it. On August 2 it was time for the annual "Peach Run", this year led by Roger and Missy Shores. The weather was perfect as some gathered at the Big Biscuit in Independence for a hearty breakfast before venturing out. Twenty-two left from there for a nice ride along the Missouri River toward Lexington, Missouri where the first stop was the courthouse. A cannonball can still be seen lodged in one of the columns. A movie about the Battle of Lexington and a tour of the Anderson House completed that portion of the history lesson.

From Lexington it was a short ride to Dover where members enjoyed the celebration of Dover Days. There was a nice lunch prepared by the American Legion post, products from the local wineries, crafts, quilts and homemade pies at the local church. Mary Rose Enderle, Bogie Bogenrife, and Big Dave Patton slipped into the parade while the rest watched from the sidelines.



After the parade the group headed to the orchards. The first stop was Schreiman Orchards where members loaded up lots of peaches and a few melons. Then it was off to Waverly and Peters Market. There were some other varieties there and more room was made in the bikes for additional fruit.

From Waverly it was back toward Kansas City with a stop at the chapel and Confederate Cemetery in Higginsville to complete the day's history lesson. Many thanks go to Roger and Missy for a wonderful day.

August 7 was the Chapter B monthly dinner ride. Thirty four members enjoyed the evening and ride to K & M Barbecue in Spring Hill, Kansas. Dave Aiken, ride leader, had forewarned the restaurant that we would be coming, telling them to prepare for about twenty-five. We had to move additional tables into the back room to accommodate everyone. But good food and company prevailed and a great time was had by all.

Next page

KSB Continued

It was time to set off for more fresh produce on August 9 with a trip to Louisburg, Kansas. Twenty-eight members ate breakfast at Miss B's Café to gather strength for the search for blackberries fresh from the patch owned by the brother of ride leader, Dave Aiken. The blackberries weren't as plentiful as in years past, but three rows had been saved just for our picking. The weather cooperated and stayed cool enough for picking and we found plenty of blackberries and purchased other farm fresh tomatoes and corn.

On Tuesday, August 12, Mary Rose Enderle and Bogie Bogenrife led twelve members to watch the MR340 Canoe/Kayak races on the Missouri River. The group arrived at LaBenite Park approximately fifteen minutes before the first kayak. This allowed time to visit with the ground crews that provide support to these adventuresome people along the three hundred forty mile river route from Kansas City to St. Charles, Missouri. Many of the two hundred thirty paddlers have GPS trackers on board their canoes and kayaks. After an hour of watching, the group rode to the Corner Café in Liberty, Missouri for continued fun and good food. It was a wonderful day of good times thanks to Mary Rose and Bogie.



Seven Chapter B members ventured to Harrisonville, Missouri on August 16 to participate in the Tenth Annual Healthy Angels Ride. Steve and Brenda Milam led the group to the Cass County Regional Medical Center where they met up with one hundred thirty of their friends to support the Nurses' Assistance Fund. After registering and enjoying free coffee and cinnamon rolls, eighty-four bikes paraded out of Harrisonville and journeyed about one hundred miles through the countryside. Stops were made at three other medical clinics for water, snacks, and to roll the dice for the high low dice games.



The group arrived back in Harrisonville about 1:00 p.m. for a catered lunch and concert by a young man who had been on the American Idol show. Over fifty door prizes were given out. Steve and Brenda Milam, and Mary Rose Enderle were all winners of donated gift cards and Paul Korb received a \$100 gift card for the highest total on the dice rolls. It was a great day to ride and support the nurses at the medical center.

Chapter B events for September:

September 4—Dinner Ride

September 20- Foremost Dairy Ride

September 12-13 KS District Convention

September 27- Breakfast Ride

September 18—Chapter Meeting

Safe travels, Paula

Chapter C - Topeka

Chapter Directors

Ron & Marjie Crawford
785-764-0626

Asst. Chapter Directors

Don & Brenda Williams
785-537-1988

Web Master

John Gull
785-266-6735

Chapter Educator

Open

Treasurer

Sandy Davis
785-691-7000

Chapter Editor

Don Williams
785-537-1988



August started out with a bang for Chapter C. Gary and Susan Drake “hosted” the supper ride on the 6th. The reason I said hosted the ride they provided the chapter with supper at their home. The rest of us departed the Topeka at 6:00 pm heading to Lyndon with 5 bikes and 12 people. Two couples decided to make the trip in cars since the temperature was around 100°. Bill and Margaret Hanson also joined us at the Drake’s so we had 16 people in total for the evening.

The food was excellent they are both good cooks judging from the smoked pork, baked beans, potatoes and pies that were scarfed down. Fortunately their deck was in the shade so sitting outside was very pleasant for the whole evening until dusk when the bugs decided to come out and start biting. That could have been a hint for everybody to head home not that it mattered. None of us on bikes were looking forward to riding home in the dark anyway. Brenda and I made it home just at full darkness so the rest on bikes should have made it home in daylight since we had to ride the farthest.

We has some lively discussions since Gary was talking about recently having a sleep study and finding out that he was much more rested after sleeping with a machine blowing air up his nose all night. It turned out that he has joined a pretty good size group of folks in the chapter that use those machines. It appears the chapter is out to help out the medical profession provide for their families with all the homemade joints and other repairs that keep cropping up.

We passed around a signup sheet to cover the registration booth at the District Rally in September and just about filled it up completely. Hopefully the hot weather will be behind us at the rally.

On the 16th we held our Chapter birthday party at John & Teresa Gull’s we had 18 people in attendance. There was plenty of food to go around with enough left for those that wanted to leave with doggie bags. We had our normal combat croquet games with Al Davis winning the first game and Brenda winning the second after providing Al with some distractions during his shots. (*all I did was goose him once*) John and Earl Barnes had their own competition going on with a washer toss game that Earl brought. It appeared to be a lot of fun and not all that easy to play either.

We held our monthly meeting also with Ron saying the Chapter has been asked to furnish ice tea for the rally so if anybody has

a large cooler they would be willing to loan for the event please let Ron know. We will be holding our September supper ride on the 2nd to McFarland’s restaurant in Topeka leaving from the Kwik Shop at 6:00PM or else arriving at the restaurant shortly after that if it’s more convenient to the individuals. We won’t be having an extended ride in September due to the District Rally being that weekend.

Gary and Phyllis VanBuskirk said the annual ride at the State Fair would be on the 7th of September. The bikes will be on display from 8:00AM and the ride will be at 7:00PM. Parking passes will be provided, however you will have to pay for entry to the fairgrounds.

Ron also stated the mobile Vietnam Wall will be in Topeka September 25th thru the 28th at the National Guard Museum on Forbes Field. Easy directions are: take Topeka Blvd either north from US 75 or south from I-470 and turn into Forbes Field at the KC 135. For those that aren’t airplane nuts like me it’s the big plane with 4 engines on it sitting by a little plane. I think Ron said it was free to see and that pencils and paper will be available for those that want to “rub” a name on the wall. Ron also invited everybody to Marjie’s graduation on Sept 5th at 7:00 P.M. It will be held at the VA located at 21st and Gage Blvd in building 22. There will be a reception at Ron & Marjie’s home, 3220 NE Seward Ave. on Sept 6th, you can come and go anytime from 2:00 P.M. to 6:00 P.M.

Birthdays

3	Gary Drake
10	Earl Barnes
27	Deb McCullough

Don & Brenda Williams
ACD/Newsletter Editors

Chapter F - El Dorado



TBA
Chapter Directors

Asst Chapter Director
Steve & Lajuana Pena
316-250-4450

Chapter Educator
Russel Harold
316-648-4714

Chapter Treasurer
Gene Shannon

Chapter News Letter Editor
Dale Mooney
316-775-0211

Chapter Couple
Rick & Brenda Kistler
316-259-8920

Chapter Scrapbook
Rick & Brenda Kistler
316-259-8920

Chapter MEC
Rick Kistler
316-259-8920

Hi everyone,

It's been quite a ride this summer and it's not over yet. The Kansas and Oklahoma conventions are coming up in September. And don't forget the State Fair 'ride in' the 7th and the district ride to Wamego.

Our chapter ride was picked by Lois and Russell Harold. We rode to Taqueria El Paisa in Wichita. They had a good turn out and missed the ones who couldn't make it.

As most of you know Dale and Janis got moved down to Arkansas. Dale hurt his shoulder from lifting and moving boxes and things. Janis got him into a Dr. the 14th and they gave him meds to help it heal. Talked to her the 23rd and she said he was doing a lot better. She thought he should be back to unpacking the garage the 1st of the week. lol

Saturday was a very busy and hot day. We met up with all the Twisters Drill Team and ate lunch. Let me just tell you these people are crazy but are so much fun to be around!! We then went down to the parking lot that they were to perform at 2pm and again at 4pm. At the 2 o'clock performance was very disappointing for the Twister Drill Team, as the Black-Top Nationals didn't advertise their performance so very few people were there to watch. Then the 4 o'clock show wasn't much better but a few more, mostly people that different drill team members invited. Very discouraging for the twist-ers but they had two great practices. And did I mention how HOT it was out there!!

Then at 6:30pm Chapter Q had their Chapter Birthday party at Bill and Sheila's beautiful home in Mulvane. It was a great turn out. People I haven't seen for a long time. Chuck and Marilyn were there (who by the way was also at the Twister performance).

Bill and Sheila and Jack & Teresa did a great job

of organizing, cooking, serving and making everyone feel very welcome. It was a wonderful time for all that was there. Thanks Chapter Q and a special thanks to Bill & Sheila for once again opening their home to the GW family. This Tuesday, the 26th is Chapter F's meeting and Rick and I will be conducting the meeting until we have someone step up and take it over PLEASE!!! Lol

This next month's supper ride or breakfast will be announced later when Dave Wilson lets us know. Hint hint Dave.

Hope to see a lot of you at the State Fair and especially hope to see a lot more at our Ks Convention in Abilene on the weekend of 12-14th. Can't wait to see all our friends from the other states. Always enjoy each and every one of you!

If anyone knows of any vendors that you might know that would like to come to our Ks Convention please call Kathy Chesnut at 316-214-1994 or me, Brenda Kistler at 316-259-8920. Thank you!

September Birthdays: Steve Pena 9/6
Janis Mooney 9/7



September Anniversary's: John & Karen Glaves
9/7



Stay cool, Ride Safe and hope to see you soon!

Chapter 'F'
Rick & Brenda Kistler



Chapter H – Hutchinson

Blue Dragon Country

Chapter Director

Terry & Judy Mann
620-728-9320

Asst Chapter Director

Dale & Georgeanna Tritsch
620-921-5941

Chapter Educator

Marv Ayres
620-241-2499

Chapter MEC

Bill Watts
620-728-8347

Chapter Treasurer

Chris & Janis Scheurer
620-899-5772

Chapter Editor

Georgeanna & Dale Tritsch
620-921-5941

Chapter Couple

Georgeanna & Dale Tritsch
620-921-5941

Our regularly scheduled gathering is 7pm on the 4th Thursday of the month. We go to the Sirloin Stockade on 17th street in Hutchinson, KS (just a little west of 17th & K-61 Hwy).

We begin the feeding frenzy at 6pm.

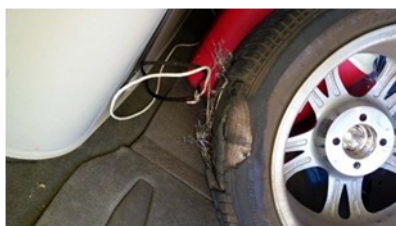
From your Chapter Directors



Terry & Judy Mann

We started the month with a great ride to Big D's House of Bar B Q in Gypsum on Aug. 2. We had 14 bikes and 1 van, and had a great finish with ice cream at Leon and Ellen Deges house in Salina, thanks for the hospitality Leon and Ellen. Unfortunately the Chapter H curse started just south of Salina when Bill Watts threw a drive shaft on his trike, thanks to ACD Dale Tritsch for hauling him home. On Sunday we had 3 bikes that went to Cassoday and enjoyed the food and fellowship at Gene and Delores Shannon mc club house. After Cassoday we traveled to Goessel for their annual thresher days. When leaving there the Chapter H curse hit my trike with a burnt out starter, the result of a sticking solenoid. We had enough people to give it a push start and rode it home. The next day the curse hit Dale Tritsch's trike when his brakes went out. All three trikes were scheduled to be in a car/bike show the following Sunday but were not repaired in time. We did take a trike that is owned by Carolyn Colahan to show.

The weekend of Aug. 16-17 we had a mostly enjoyable ride to SE KS that had another Chapter curse by blowing a rear trike tire on Leon and Ellen Deges trike just north of Wichita.



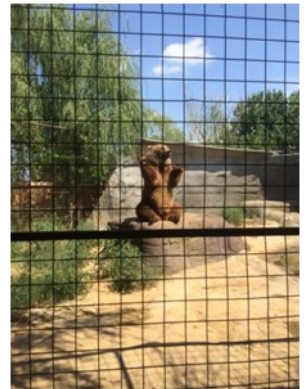
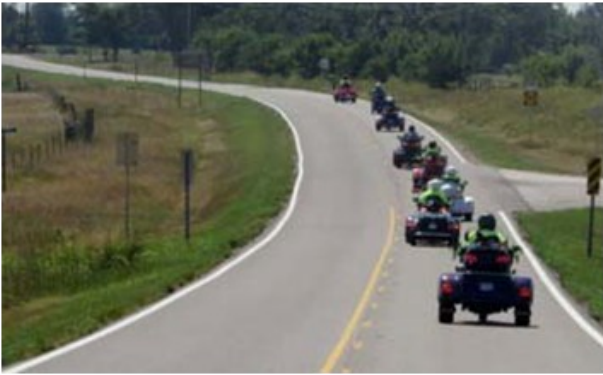
KSH Continued

After an almost speedy tire removable, our RV (rescue vehicle) manned by Georgeanna Tritsch and Carolyn Colahan ran the tire to Wichita for replacement.

We made it to Leon to pick up 2 more trikes and then on to Howard to pick up another trike and on to Moline for pictures on the historical swinging bridge.



After that we went to Sedan for lunch in the The Hollow. We had planned on touring the Emmett Kelly museum while there, but had to make arrangement for a special showing on Sunday on the way back. After leaving Sedan we headed for the Safari Zoo in Caney, very much a need to see zoo with its guided tours.

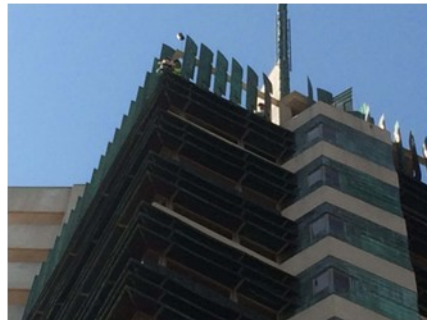


KSH Continued

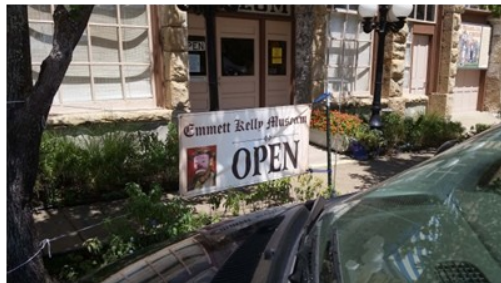
It was on to Bartlesville, OK for a Braums stop and then lodging at a very nice Candlewood Suites Hotel. We had a great meal at El Maguey Mexican restaurant that evening



Sunday we ate breakfast at Golden Corral and then went to the landmark Price tower where our mascot tried to skydive from the 16th floor.



Shortly after leaving Bartlesville, Leon's curse returned when his rear bumper on his bike came loose on one side and was dragging the hiway; a quick reattachment and we were back on the road to Sedan and the Emmett Kelly Museum. The museum has a lot of clown history and some town history as well.



KSH Continued

We then rode to the Henry Candy factory in Dexter, where everybody indulged in their favorite sweets. After an ice cream stop and fuel in Winfield, the group split up and went several different ways home. It was a fun ride and we all enjoyed having the Ohlers from KS-B join us.

We have several going to the GWRRA Rally in CO this week, and hopefully cooler temp's. Judy and I will finish the month in Osage Beach, Mo. and the Regiers are going to represent the Chapter at the GWRRA rally in Nashville. Hope to see several of you at the KS state fair show on Sept. 7th.

Ride safe.

Terry and Judy Mann Chapter H directors.

From your Assistant Chapter Directors



Dale & Georgeanna Tritsch

Send your photos and descriptions or short article of what you have been doing to Ann Whithorn iz-zy2frewckles@hotmail.com so she can add it to the chapter scrapbook. Also send it to Dale Tritsch dalet@cox.net. Even a short ride for ice cream or pleasure would be appreciated. We want to show everyone what a fantastically fun chapter we are.

From your Chapter Educator



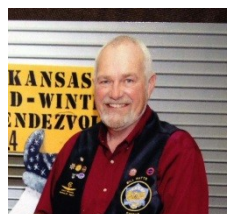
Marvin Ayers

Rider Ed. Bits

Another month of riding behind us and sad to say way too many fatal motorcycle accidents throughout our state. A motorist not seeing a motorcycle or a motorcyclists not being aware of the traffic or conditions. Fail to Yield Right of Way, Disobey Stop Sign, Improper Passing, Defective Equipment, Reckless Driving, traffic violations that if removed from the equation would produce a completely different outcome. Don't be a statistic, be a solution! Be aware! Ride to arrive alive!

Let's make this next month a safe riding month. Marv

From your Chapter MEC



Bill Watts

Greetings my GWRRA family. I hope you are all well and enjoying what is left of this summer, yes it has flown by already but not to worry, we all still have plenty of good

KSH Continued

days ahead as the temps will start to cool a little but the down side to that is the days will also get shorter. That is just some food for thought as you plan your evening rides if you, like a lot of us, really don't care to ride after dark unless there is no other choice and if any of you have to, please be very careful.

So this month I am not going to talk a lot about finding and recruiting new members Whoa! Whoa! I regress, yes I am, but it's going to have a little bit of a different message this month, it will be one that sets us as GWRRA members apart from so many others. We at Chapter H have seemed to have had our share of mechanical and even tire issues this month so far as most of you know I lost the front yoke on my drive shaft when returning back to Hutchinson from a dinner ride to Big Ds house of BBQ in Gypsum, KS and this past Saturday morning Leon and Ellen blew a rear tire while we as chapter were on our scheduled ride to SE Kansas and over to Bartelsville, OK for the weekend. Ok, now I know some of you are thinking so what's that got to do with membership and recruiting. My answer is A LOT! Because when I lost my drive shaft every chapter member in our group stopped and started doing something from signaling to approaching motorists to move over to checking my bike out to find the problem and when it was determined I was not going to be able to limp my baby home Dale Tritsch was off in a flash to ride 35 miles to his house, pick up his truck and trailer, drive 35 miles back, load up my bike and then drive 35 miles back again to get us home and never thought twice about it, not to mention that Georgeanna stayed with us in their van until he returned. And on this past Saturday morning when the call came over the radio from the tail gunner (Dale) that Leon had just lost a rear tire the entire group pulled to the right shoulder of I-35 and sprung into action so quick that I think we may have made a few NASCAR pit crews look like the Keystone Cops. While the tire was getting removed from their trike there were at least two chapter members on cell phones calling tire dealers in Wichita to get a new Tire. A soon as one was located the tire was in the back of Georgeanna's van and on the way for a replacement. This was all done in about an hour and 15 minutes from the time of the blow out to back up and running. There is no way I myself would not have been back up and running in just a little over a week had it not been for Dale taking charge and locating the parts I needed and getting them shipped asap. I can't thank him enough.

Now I know that some other motorcycle groups would have left a member of their group sitting on the side of the road and told them they would go try and find some help or get ahold of some guy with a truck and be back as soon as they could find someone etc. etc. but we as GWRRA members don't and would never do that, because we look out and take care of each other as well as aiding non GWRRA members we may encounter having trouble out there on the road. It is who we are and what sets us apart but does not make us better than any other group or organization but does serve as an example. And if and when we can't take care of the problems on the road ourselves we call Rescue Plus! So members, remember the next time you are talking to a potential new member you might mention the fact that we look out for each other out there on the road and no GWRRA member is ever left behind.

Ride Safe
Bill Watts
Chapter H MEC

From your Chapter COY Dale & Georgeanna Tritsch



We have been busy checking out the info on other chapters online and getting ready for the Kansas State Convention in Abilene, Ks. We have been to the Colorado State Convention where we found out it is definitely much cooler in the mountains. We are looking forward to seeing many of our GWRRA friends in Abilene, KS.

KSH Continued

From your Chapter Newsletter Editors



Dale & Georgeanna Tritsch

KS-H had a fun ride to Hoof & Horn in Sedgwick, KS on Saturday, July 26. There were 19 from chapter H and 14 from other chapters joining us. We want to thank Wayne Champlin from Colorado for joining us. It is always great to have out of area visitors. Even Buggy had a good time and posed with our waitress.



Schroeder and Martens at Peel Ferry
“It was fantastic riding weather”

Jan Schroeder had a run-in with some gravel.
Jan is alright, the bike – not so good.



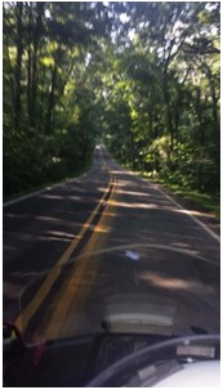
Overlook AR Hwy 7

Picnic on AR Hwy 74



KSH Continued

The Hiway



The broken bike



Jan hit some gravel and this was the result
Jan was not seriously injured.



Oark AR. BBQ and soda for lunch. Then back to the Pig Trail. Perfect weather for riding, and great GWRRA friends to ride with. Don & Jan Schroeder and Lowell & Joyce Martens.



Five of us (that includes Buggy) went to the KS-P meeting on Friday, August 08. We all had a good time and enjoyed the visit and information gained from all the GWRRA members there.

The Colorado State Rally wound down on Saturday. I think everyone had a good time. It was a cool weekend. Going home to 100 degrees is going to be rough.



KSH Continued

Bill & Sarah and Jeff & Ann rode to Leadville, CO. No rain, just a little snow.



On Saturday evening several friends got together in the suite for food and conversation.



Bugsy



I stayed with Terry & Judy Mann the month of August. I had many pleasant times and got to go to a lot of places. I even got to go to the Colorado State Convention. I helped Dale & Georgeanna at the vendor booth.

Upcoming Events

Kansas District Convention
September 12 thru 14
 Abilene, KS

Oklahoma District Convention
September 25 thru 27
 Shawnee, OK 348323

Birthdays

Anniversaries

Carolyn Goering 09-12
 Ron Regehr 09-16
 Georgeanna Tritsch 09-18
 Toni Ayers 09-28

Bud and Alice Mounts 09-04
 Ron and Jan Regehr 09-16

Website <http://autos.groups.yahoo.com/group/chapterp/>

Chapter Director

Dave & Sherri McDonald
316-650-3238



Asst Chapter Director

Dennis & Kathy Chesnut
316-214-1995

Rider Educator

Rick & Carolyn Stevens
316-683-1138

Chapter Couple

Dennis & Kathy Chesnut
316-214-1995

Web Master

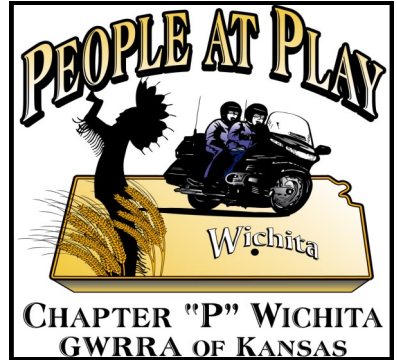
Dan & Tammy Vickers
316-524-7808

Member Enhancement

Glenn Bindley
316-880-2396

Treasurer

Carolyn Stevens
316-683-1138



Meeting Night - Friday, August 8th - Brown Bag at 6:30pm Meeting 7:00pm
Derby Church of Christ 225 N. Derby St,
Derby Ks. 67037 in the fellowship hall at the south
end of the building

Meeting Night - There will be a short stand up meeting at the Kansas State Convention in Abilene Kansas

Ride last month:

Chapter P breakfast ride was to Sweet and Spicy in Howard Kansas. The food was great and a very nice place. Some members of chapter Q met us at the restaurant and all had a great time.



On August 9th Bike trailer course at the water department parking lot and of course we had lunch at TJ's.



of our members attended the August 3rd Cassoday Kansas bike day .



Next Page

KSP Continued

Rides

The Chapter P Fall ride on October 17, 18 and 19 will be to the Eureka Springs area. We will travel to War Eagle Mill on Saturday for a fun filled day. Come out and visit Dale and Janice Moody at their new house in Holliday Island Arkansas. More details will be given at the October Chapter P gathering. Contact the Lazy Eagles Resort P.O. Box 141 Eagle Rock Mo 65641 (417-271-3390) for hotel reservations. Anyone wanting to attend please Contact Sherri or David McDonald to RSVP 316-650-3238 or dlovessh@sbcglobal.net.



Dinner rides and dessert for the meeting this month will be planned by Joe and Janet Gonsalves.



September Birthdays-None



September Anniversaries- None

Everyone have a safe month!
David & Sherri McDonald
Directors Chapter P



479-754-8484 Telephone
479-754-8486 Fax
horizontrikes.com
2210 East Main
Clarksville, AR 72830

Mize Auto Body, Inc.

Kansas State Rally

September 12-14 Chapter P will be handling classification and staging for the bike show

Sherri McDonald and Kathy Chesnut will be responsible for the vendor walk

Chapter Q – Wellington



Chapter Directors
Jack & Teresa Kistler
620-782-9636

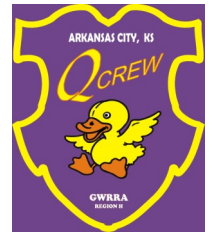
Chapter Couple
Steve & Sue Boone

Ass't Chapter Directors
Bill & Sheila Tucker
316-777-1052

Chapter Treasurer
Becky Mangus

Chapter MEC
Ron & Judy Eggleston

Chapter Educators
Open



WOW! WOW! WOW! Now for some fun spell it backwards. !WOW !WOW !WOW. For those of you that have been getting out and going to Kansas GWRRRA events lately the word WOW explains the excitement going on.

Most of you know we moved our meeting place to Laurie's Kitchen in Mulvane for our August meeting. We are happy to say we had a great turnout with 30 members to help us break in our new location. The following night took us to Chapter P's meeting and they had 29 members present. That wasn't all of it, the next week we all went to Chapter A's and they had a huge crowd, way to go KS!

On August 23rd we held our Birthday Bash celebrating the 24th year of KSQ. It was hosted by our own Bill & Sheila Tucker, Thank You Both for your hospitality. The attendance was overwhelming, we had 40 members that braved the heat and had a great evening of Fun, Food & Friends.

With Labor Day and the summer heat coming to an end the best riding season is just around the corner. It's time to get out the Wings and share in the fun. So everyone get your calendars out because we have several great events coming up.

To begin with on September 7th we will once again have the Ks. State Fair ride. This is always a good time to enjoy the fair and meet new potential members (and show off our bikes).

Then the following weekend is the Ks. Dist. Convention in Abilene on Sept. 12-14th. We hope to see all of you there, we know that the district staff has

worked hard to make this event a success. One more ride coming up in September is the Dist. Fall Ride to Wamego on Sunday, Sept. 21st. The last thing to keep is our breakfast ride on September 27th we will be riding up to Auntie Mae's Café in Wichita, we will get more information out as it gets closer.

Now we get to October and it's time for our annual KSQ Fall Foliage ride. The ride is scheduled for Oct. 10-12th and we are having several members making their reservations to go. We will spend our first evening in Fort Smith, Arkansas at the Baymount Inn and our second night will be in Eureka Springs, Arkansas. Call or email us for more information. We're looking forward to a great weekend, hope you can join us.

September Birthdays: Dick Shaw 7th
Virginia Fiske 16th
Jimmy Gardner 30th

Anniversaries: Ray & Norma Wirtz 28th

Until the next time,
Ride Safe,
Jack and Teresa Kistler

From Asst CD Bill & Sheila Tucker

Thanks to all that visited our home to celebrate KSQ's 24th birthday.

The next few pages are photographs of the event. Thanks Teresa for taking them and sending them to me.

Enjoy!

KSQ Continued



Happy Birthday KSQ 24 years



Okay! Jack wants to Talk!
How do I keep that from happening?



Jack Talking! Bill Agreeing!



Burgers are done! Here comes the Wieners
OOP! I burnt the Wieners



Bill gives brief history of the start
of Chapter Q



Sheila gave Wendy Daniels a cake &
Birthday card.



Hey! Where's Ours? (Shaw's labs)



Ron said: Can't hear you!
I'm going to eat anyway!



Sherry isn't waiting on David?



Wait for me. It's my Birthday!



The serving line is long but quick



Jim & Carol Owens must have cut
in front of the line.

KSQ Continued

Everyone is full. Dessert has been gobbled up. It's time for visiting and sharing stories.....



It was great to have Chuck & Marilyn Powell join us



Jack found some one to talk to. He got you trapped Jim Owens

Gary Mangus is looking for someone to talk with!

View from deck to new Fire Pit that Sheila built.



More on Fire Pit row!

KSP David, Dennis, Sherri, Kathy

VanBuskirks & Boones on Fire Pit Row.



These four wants to know what Was said at the very beginning?

Jack explains to Tom what was said. Doris is thinking. "I don't think so."

Andrea Shepherd looking at the scrapbooks. Duane likes them too

KSQ Continued

Rick, Barb, the Shepherds and Duane



Gabby (Ron) & Judy are busy flapping their jaws.



Powells, Charlie & Others Enjoying each others company



Hey! Where are you two going?



Right here. It's snack time.

Well readers that's the end of the photo show for the 24th birthday of Chapter Q. Here is a brief history of the beginning of Chapter 'Q'.

In March 1991 an organization meeting was held in Wellington Ks. In attendance were the State Directors Jim & Wanda Wilks; Bill Tucker; Ralph & Lee Sistrunk; Calvin Young;; Roger & Carla Rains. Dir. Wilks asked the Rain's to be the Chapter Directors, (Formerly called Area Representatives), they accepted. In May 91, Bill & Sheila Tucker was appointed Asst Chapter Directors.

Because of his farming duties, Roger asked Bill to handle the up coming kick off for the chapter. Bill began with sending out a newsletter to potential 'Q' participants and having meetings in his home. Sheila would bake cakes and pies and the attendees would pay for the desserts. That was the first source of chapter income.

The first Bubba's Birthday Burger Bash (Bill Tuckers Birthday Party) took place June 91 at the Tucker's. Although it was Bill's birthday, a 50/50 was held and a mini auction to make some operation money for the new but not yet official chapter.

August the 18th was the kick off. It was held at the steak house in Wellington Ks. 105 were in attendance. Bill & Sheila were appointed the first official Chapter Directors (Area Reps). Roger's farming duties were a factor.

KSQ's very first official meeting (gathering) as a chartered chapter was September 17, 1991.

A couple of other dates of some interest. KSQ first official 'Chapter' fund raiser was Chili/Potato Soup Feed at the Tuckers. Sheila & Becky Bodine, made crafts items and auctioned them off. Entertainment was provided with showing of Mid-Winter Rendezvous and Rally events on video. That was 11-19-91.

In April 92, Ron & Judy Eggleston were appointed Asst Chapter Directors. In June of 92, Judy Eggleston became the first Q member to be placed on the state (District) staff. She was appointed Treasurer.

I believe she has served as the District Treasurer for almost every District Director since. That has got to be a record.

Running out of space. Jack & Teresa CD's and Sheila & I ACD's wish to thank everyone that took time to be with us at the birth place of KSQ (Our home) August 23rd to celebrate the birthday of KSQ.

Bill Tucker

Kansas Couple of The Year 2014



Steve & Terri Bockhaus

KS-A

Kansas Chapter Couples 2014

CHAPTER A COUPLE OF THE YEAR

Robert & Barb Brown



CHAPTER F COUPLE OF THE YEAR

Rick & Brenda Kistler



CHAPTER B COUPLE OF THE YEAR

Steve & Brenda Milam



CHAPTER H COUPLE OF THE YEAR

Dale & Georgeanna Tritsch



Kansas Chapter Couples 2014

CHAPTER P COUPLE OF THE YEAR
Dennis & Kathy Chesnut



CHAPTER Q COUPLE OF THE YEAR
Steve & Sue Boone



The Kansas Twisters

Drill Team

Steve Bockhaus, Team Captain



My where has the time gone? It seems like just yesterday we were in Madison putting on a show. On Saturday 08/23/2014, we put on two shows for the Black-top Nationals. There was NO advertising of us being there other than what we promoted. As expected, the attendance was low. However, those who watched were impressed. We got the usual "I didn't know a motorcycle could be handled like that". Of course we told them that with training and practice it can be done. A Big "Thank You" goes out to our GWRRA friends who came out to the shows.



Twisters Continued

I am going to insert a little Medic First Aid at this point. I brought a cooler full of bottled water to the shows. It was 102 – 105 on the range at show time. The team drank most of the water that I brought along with bottles from other coolers and some food vendors. I want to give a very BIG – THANK YOU! for drinking that much water in the heat. Everyone tried very hard to stay hydrated. Keep up the good work and stay healthy along with stay safe. Remember, you cannot stay safe if you are not healthy.



Twister Continued

Our next show will be at the Kansas District Convention in Abilene Kansas. It will be on Saturday September 13th. You will find the time on the schedule. Unfortunately it not be at the same location as last year as that lot will be in use by the manufacturing plant. We will be at the Abilene High School parking lot. You can get directions on how to get there at the Riders Ed booth at the Convention site. After the show, please stick around as we will be setting up the “Maze Ride” at the same lot as the Drill team show. This “Maze Ride” will be open to ALL riders of ALL skill levels. It will not be for competition, but for the fun of it. Trike riders please note that this is open to trikes also. This maze was run at Wing Ding and I saw a trike run a perfect, clean ride on this course. All riders also note that it is OK to hit a cone or move it. It is also OK to go outside of the markings. The goal is to solve the maze as best you can. There will be timers there for those who wish to challenge fellow riders. The timing will be optional.



See you Down the Road --- Remember - -Riders Ed Saves Lives

Steve “Twisted One” Bockhaus - Captain
Kansas Twisters Motorcycle Drill Team

GOLD WING ROAD RIDERS ASSOCIATION
KANSAS DISTRICT

2014 SCHEDULE OF EVENTS

- September 6, 2014: Rider Course Trike with Trailer
September 12-14, 2014: Kansas Convention, Abilene Kansas
"Where The Rails meet the Trails"
September 21, 2014 District Brown Bag Ride to Wamego
September 25-27, 2014: Oklahoma District Rally, Shawnee OK.
November 15, 2014: Region Staff Meeting, Marshall, TX

2015 SCHEDULE OF EVENTS

- January : Kansas Mid Winter Rendezvous, Park City, KS
March 26-28: Louisiana District Rally, Lafayette
April 16-18: Region 'H' Rally, Marshall, TX
September 18-20: Kansas Rally- Location & Theme TBA later

Kansas District Convention

"Where The Rails Meet the Trails"



At the Kansas Free Fair Grounds, 619 N.
Rogers, Abilene, KS

September 12-14, 2014



Vendors, Seminars, On/Off Bike Games, Chapter/Team Challenges, Grand Prize Drawing, RiderEd Drawing, Night Light Parade, District Cookout, 50/50, Kansas Twisters Drill Team and much more.

Motel Information

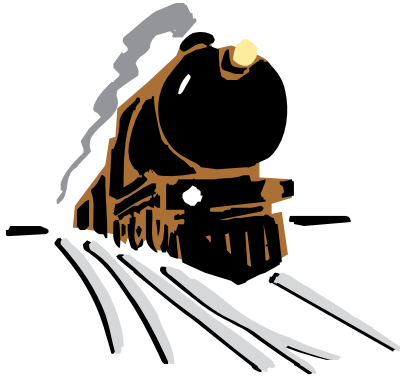
The following motels are available. Prices for convention attendees are listed on Rally Registration Form.

Super 8 Motel, Holiday Inn, America's Best Value Inn

A camp ground is on site. Electric hook up only. Dump station near by. Restrooms available in Sterl Building and showers will be available in another building. There is a second camp ground off site.

The Kansas Team hope you will meet us "Where The Rails Meet The Trails" to enjoy family fun and entertainment!

Registration Form and additional information on Motel & Camping fees are on the web page and in the Kansas Winger.



KANSAS DISTRICT CONVENTION
 September 12-13, 2014
 Abilene, Kansas
"Where The Rails Meet the Trails"
 Registration Form



Super 8: Continental Breakfast; 2 people \$58.48; 4 people \$70.18 tax included 1.785.263.4545
 Holiday Inn: Full Breakfast; \$109.01; suite \$120.48 plus tax until 8-12-14 1.785.263.4049
 America's Best Value Inn: Continental Breakfast; \$53.93 tax included 1.785.263.2050
 Fair Grounds Camping: \$15.00/day. Electric Hookups only. Showers & restrooms available on site.

GWRRA Members: \$25.00 After August 29th \$30.00

Life Members: \$20.00

Non-Members: \$30.00 After August 29th \$35.00

Rider: _____ GWRRA # _____ Age _____ Email _____

Co-Rider: _____ GWRRA # _____ Age _____ Email _____

Address: _____ City _____ State _____ Zip Code _____

Phone# _____ Chapter _____ District _____ Region _____

Your Level: IV - SM - GM - LGM - Will you attend the Level IV Breakfast? Yes - No
 (Please Circle) (Please Circle)

I/We agree to hold harmless GWRRA and/or any Co-sponsoring organization(s), and any property owners for any loss or injury to self or property by reason of attending and/or participating in activities at this convention. I/We also agree to assume responsibility for any property that I/We damage.

Rider Signature _____ Date _____ Miles to Rally _____

Co-Rider Signature _____ Date _____ Miles to Rally _____

For more information contact Jack or Doris Schoeck, District Directors at 620-341-0426 or email
Kspowerstroke01@sbcglobal.net

Please make checks payable to: Kansas District-GWRRA

Mail registration and check to: Judy & Ron Eggleston, #20 Northfork Rd., Kaw City OK 74641

Come join your Kansas GWRRA Family
"Where The Rails Meet the Trails"

**KANSAS DISTRICT CONVENTION
'Where The Rails Meet The Trails'
Abilene, Kansas**

DAY	ACTIVITY	ASSIGNED TO	CONTACT
Friday 9/12/14			
8:00am-8:00pm	Camping Registration/set up	Jack & Rick	Schoecks/Kistlers
9:00am-6:00pm	Registration	Chapter 'C'	Judy Eggleston
9:00am-6:00pm	Sign up for seminars & other activities at registration	Judy Eggleston	Judy Eggleston
9:00am-5:00pm	Security	Chapter 'H'	Terry/Judy Mann
9:00am-5:00pm	Grand Prize & 50/50 Tickets (Purchases)	Chapter Couples	McDonalds
9:00am-5:00pm	Vendors		Vendor Coord.
10:00am-4:00pm	Vendor Walk	Chapter 'P'	Sherri & Kathy
10:00am-5:00pm	Booths open: REd-MEC-MAC-LTD		Directors
10:00am-11:00am	Bingo	Chapter 'F'	Karen Glaves
11:00am-12:00pm	LTD Seminar	Ruth & Marty	Dannar's
12:00pm-1:00pm	LUNCH		On your own
1:00pm-2:00pm	MEC Seminar	Bill Watts	Bill Watts
2:00pm-3:00pm	Steam Engine Races for chapters & individuals	Chapter 'Q'	Jack & Teresa
3:00pm-4:00pm	Outside Games (Off Bike)	Chapter 'A'	Steve Bockhaus
5:00pm-6:00pm	SUPPER		On Your Own
6:00pm-6:30pm	Opening Ceremony	Jack & Doris	The Schoecks
6:45pm-7:15pm	Skits-Talent Show (Non-competitive)	Chapter 'H'	D. Tritsch
7:45pm-8:00pm	Light Parade Staging (Full Riding Gear Required)	Bill, Jim, Rick	Bill Tucker
8:00pm-8:30pm	Light Parade Begins (Full Riding Gear Required)	Bill, Jim, Rick	Bill Tucker
8:30pm-9:00pm	Light Show Staging & Judging	Chapter 'B'	Paula Aikens
	Drawings		
	Light Parade participants \$50.00- Present to Win		
	50/50 drawings - Must be Present to Win		
	Ice Cream Social		
	GOOD NIGHT		
Saturday 9/13/14			
7:30am-8:30am	Level IV Breakfast -Guest Speaker from Abilene PD	Bill & Jim	Bill Tucker
9:00am-1:00pm	Registration	Chapter 'C'	Judy Eggleston
9:00am-3:00pm	50/50 & Grand Prize tickets sales	Chapter Couples	McDonalds
9:00am-1:00pm	Security	Chapter 'H'	Terry/Judy Mann
9:00am-1:00pm	Booths open: REd-MEC-MAC-LTD		Officers
9:00am-4:00pm	Vendors Open		Vendor Coord.
9:00am-9:30am	Twister Drill Team Performance at H. S. Parking Lot	The Twisters	Steve Bockhaus
9:00am-3:00pm	Vendor walk	Chapter 'P'	Sherri & Kathy
9:30am-10:30am	MEC Seminar	Bill Watts	Bill Watts
9:30am-10:30am	Crafts 'Picture Puzzle Frame'	Sheila Tucker	Sheila Tucker
10:00am-11:00am	Trolley Tour	Sign Up at Reg.	Judy Eggleston
10:00am-12:00pm	On Bike Games (Maze Ride-non-competitive)	Chapter 'A'	Steve Bockhaus
10:00am-11:00am	Rider Ed Seminar- " Team Riding "	Marv Ayers	Bill Tucker
11:00am-12:00pm	Trolley Tour	Sign up at Reg.	Judy Eggleston
11:00am-12:00pm	LTD Seminar	Ruth & Marty	The Dannar's
11:00am-12:00pm	Bingo	Chapter 'F'	Karen Glaves
12:00pm-1:00pm	LUNCH		On Your own
12:00pm-1:00pm	Trolley Tour	Sign up at Reg.	Judy Eggleston
1:00pm-1:30pm	Bike Show Classification/Staging	Chapter 'P'	McDonalds
1:00pm-2:00pm	Steam Engine Races for chapters and individuals	Chapter 'Q'	Jack & Teresa
1:30pm-3:30pm	Bike Show Judging & Peoples Choice Voting	Chapter 'P'	McDonalds
2:00pm-3:30pm	Steam Engine Finals - chapters & individuals	Chapter 'Q'	Jack & Teresa
	Open Social Time & Bingo		Karen
3:00pm-4:00pm	Rider Ed Seminar " Co-Rider 2 "	Carolyn Stevens	Bill Tucker
4:00pm-5:00pm	Rider Ed Seminar- " Motorcycling for Mature Riders "	Rick Stevens	Bill Tucker
5:30pm	Closing Ceremonies/Drawings	Staff	Schoecks
	50/50 & Rider Ed Drawing Must be Present to Win		Schoecks
	Grand Prize Drawing Do Not have to be present to win		
7:00pm	Cookout Vendors & police escort team are our guests!		Staff
Sunday 9/14/14			
8:30am-9:00am	CMA Fellowship		

SUPPORT OUR SPONSERS

Merle Snider
MOTORS INC.
Just over the hill from the fairgrounds



Products that Exceed Your Expectations

9:00 - 6:00 pm M-F (open til 8 pm on Thurs) • 9-3 Sat.



Kawasaki
 Let the good times roll.

Dan's Cycle

ATV Specialists
 Service - Accessories

Kansas largest supply of parts & accessories for all makes

7901 N HOOVER RD.
 HESSTON, KS 67062

620-327-5001
www.danscycle.com



Action Jackson
Automotive & Tire
620-782-3700

GWRRA
 MEMBER
 SINCE
 1999
 #143053

114 W. K65 Hwy., Udall, Ks. Look for us under the water tower.

Jack and Teresa Kistler, Owners

We also sell Motorcycle Tires and DynaBeads



479-754-8484 Telephone
 479-754-8486 Fax
horizontrikes.com
 2210 East Main
 Clarksville, AR 72830

Mize Auto Body, Inc.

SUPPORT OUR SPONSERS

BIKES AND TRIKES, LLC

SALES AND SERVICE



Steve Alexander
1800 Cypress St.
West Monroe, La. 71291

Phone: 318-388-0448
Fax: 318-855-5608
E-mail: steve@bikesandtrikesllc.com
Web: www.bikesandtrikesllc.com

- California Sidecar
Motortrike
Roadsmith and
Champion Trike
Kits Sold & Installed
- Tires
- Accessories
- Service on all
Motorcycles



24/7 KLONDIKE








102"x132" DECK

SPECIALIZED MOTORCYCLE SERVICE PROVIDER



Jim "JC" Culver, Owner
klondikemotorcyclemedevac@gmail.com
Wichita's Coast to Coast Transport Service **(316) 789-3200**




Bikes • Side Cars • Trikes • Spyders • Boss Hoss • Scooters to Stallions

Merle Snider

MOTORS INC.

Just over the hill from the fairgrounds

2301 W. 9th Ave. Winfield, KS

Ph# 620-221-1030 or 800-748-8430

\$25,995



'08 1800 Gold Wing
8,700 Miles, New Trike

**We have partnered
with Motor Trike!**



Showroom Hours:
Mon – Fri: 8am - 6pm
Saturday: 9am - 3pm

We Can Turn Your Motorcycle Into A
Beautiful Motor Trike!

www.merlesnider.com