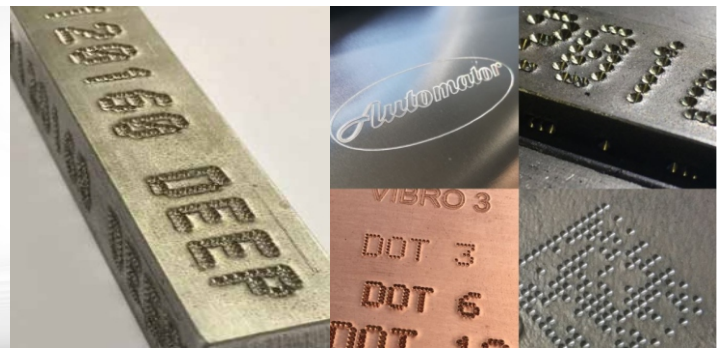


# DOT PEEN MARKING TECHNOLOGIES



## ADP 2560

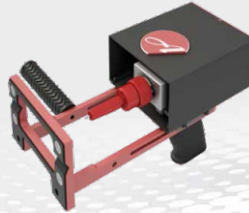


Dot peen marking on anodized aluminium, burnished metals, cardboards, ceramic, ebony, wood, metals and alloys, hard plastic, polycarbonate, silicon, painted materials, and glass.

Thanks to the very versatile software and the available I / O signals, the ADP model is particularly suitable for industrial integrations, network systems, data customization and production controls.



FOR INTEGRATION



PORTABLE

### OPTIONAL:

- Base and column available for use in the "benchmark" version.
- Standard height 500 mm.
- Other heights available upon request



## AC500

**DOT PEEN AND SCRIBE UNIVERSAL CONTROLLER:**



## ADP 25120

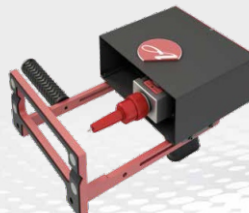


Dot peen marking on anodized aluminium, burnished metals, cardboards, ceramic, ebony, wood, metals and alloys, hard plastic, polycarbonate, silicon, painted materials, and glass.

Thanks to the very versatile software and the available I / O signals, the ADP model is particularly suitable for the industrial integration, network systems, data customization and production controls.



FOR INTEGRATION



PORTABLE

### OPTIONAL:

- Base and column available for use in the "benchmark" version.
- Standard height 500 mm.
- Other heights available upon request

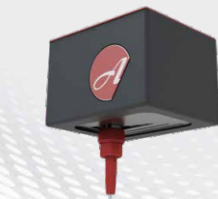


## ADP 5090



Dot peen marking on anodized aluminium, burnished metals, cardboards, ceramic, ebony, wood, metals and alloys, hard plastic, polycarbonate, silicon, painted materials, and glass.

Thanks to the very versatile software and the available I / O signals, the ADP model is particularly suitable for the industrial integration, network systems, data customization and production controls.



FOR INTEGRATION



PORTABLE

### OPTIONAL:

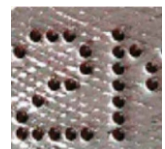
- Base and column available for use in the "benchmark" version.
- Standard height 500 mm.
- Other heights available upon request



**VIBRATING DOT PEEN**  
Characters are marked with a small pin while vibrating. Highly recommended for fast marking with very high quality needs.



**ELECTRIC DOT PEEN**  
The pin is moved electrically by pneumatic spring assisted. As not required Recommended for high quality needs.



**DEEP DOT PEEN**  
The Pin is moved with an increased capacity. Specialized pins are required for deep markings on the most resistant materials.



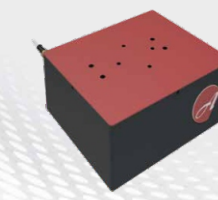
**CONTROLLED DOT PEEN**  
Font characters are created with possibility to specify the density of the dots to be marked from 0 to 80 pixels/cm. Recommended for deep marking.

## ADP 120160

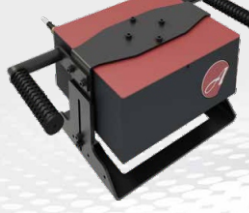


Industrial marking machine.

Lightweight and compact, ADP120160 is the most versatile system for dot peen marking.



FOR INTEGRATION



PORTABLE

### OPTIONAL:

- Base and column available for use in the "benchmark" version.
- Standard height 500 mm.
- Other heights available upon request



**PNEUMATIC DOT PEEN**  
The Pin is moved automatically by opening and closing the drive and return air. Recommended for marking on irregular and rough surfaces.



**SCRIBE MARKING**  
Markings are made by striking the surface and removing the material for deep and silent marking.

**Automator Marking Systems Inc. USA | Canada**  
475 Douglas Ave, Chillicothe, OH 45601  
Tel: (+1)740-983-0157

[www.automator.com](http://www.automator.com)

Your Global Marking Partner since 1940



## THE PINS:

### PNEUMATIC CONTROLLED DOT

Air actuated / spring return mechanism



### ELECTRIC

With solenoid valve



### PNEUMATIC VIBRATING PIN

Air actuated / spring return mechanism



### SCRIBE PIN

Deep and silent scribe marking



## ADP 300400



Dot Peen marking on anodized aluminum, burnished metals, cardboard, ceramic, ebony, wood, metals and alloys, hard plastics, polycarbonate, silicon, painted and glass.

Thanks to the very versatile software and to the available I / O signals, the ADP model is particularly suitable for industrial integrations, network systems, customizations in production data and controls.



FOR INTEGRATION

#### OPTIONAL:

- Base and column available for use in the 'benchtop' version.
- Standard height 500 mm.
- Other heights available upon request.



## ASM 6090



The quietest and the fastest solution for marking on metals and plastics.

It provides a large marking area in a very light and compact technology unit. The piston, specially designed by Automator, pushes the pin deep into the material to be marked continuously.



FOR INTEGRATION

#### OPTIONAL:

- Base and column available for use in the 'benchtop' version.
- Standard height 500 mm.
- Other heights available upon request.



## ASM 40150



The best solution for silent and continuous marking on metals and hard plastics.

The piston, specially designed by Automator, pushes the pin deep into the material to be marked continuously.



FOR INTEGRATION

#### OPTIONAL:

- Base and column available for use in the 'benchtop' version.
- Standard height 500 mm.
- Other heights available upon request.



## ACCESSORIES:

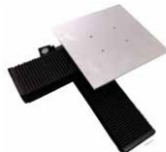
### THETA AXIS

Software-driven rotation axis for circumferential marking



### XY AXIS

Stroke 300mmx300mm Stepper motor, maximum supported weight 40kg



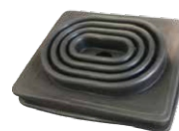
### ELECTRIC Z AXIS

Available in standard height from 500 mm up to 1200 mm



### RUBBER CAP FOR ADP HEADS

To protect the marking head from infiltrations



### MARKING START PEDAL

With communication cable and adapter



### COMMAND BOX

With start / stop buttons and cable



**Automator Marking Systems Inc. USA | Canada**  
**475 Douglas Ave, Chillicothe, OH 45601**  
**Tel: (+1)740-983-0157**

**www.automator.com**

**Your Global Marking Partner since 1940**

