



WORLD'S LEADING TECHNOLOGY COMPANY FOR  
**PERSONAL COOLING APPAREL**

# KEEP YOUR HEAD COOL

---

INUTEQ is world's leading company in developing & manufacturing innovative personal cooling technologies and products.

Whether it be at work, during sports or your daily routines, you can trust to have INUTEQ at your side to keep you comfortably cool!

Proud official supplier of several ProCycling Teams, Formula-1 Teams and many more high-profile & Olympic athletes.



## SCIENTIFIC ADVISORY BOARD

The Scientific Advisory Board consists of two independent, recognized medical scientists, which together shape a highly important advisory body for INUTEQ. The Scientific Advisory Board sees to it that the quality of research is maintained. Its primary tasks are:

### TO EVALUATE, GUIDE AND ADVISE ON NEW COOLING TECHNOLOGIES, STRATEGIES & APPLICATIONS

The Scientific Advisory Board is officially installed by INUTEQ and consists of members that come from diverse fields of research of various medical scientific institutions.

#### **Prof. dr. Thijs Eijvogels**

Dr. Eijvogels is appointed as Associate Professor in exercise physiology at the Department of Physiology of the Radboud University Medical Center (Nijmegen, The Netherlands). Thijs is interested in the physiological and cardiac responses of the human body to acute and chronic exercise.



#### **Prof. dr. Julien Périard**

Dr. Périard is an Associate Professor at the University of Canberra Research Institute for Sport and Exercise (UCRISE). His scientific interests lie in the area of environmental physiology where he examines the physiological mechanisms that mediate health and performance.



PERSONAL  
COOLING



## MAIN MARKETS



### On the job

Workers who are exposed to extreme heat or work in hot environments may be at risk of heat stress. Heat stress can result in stroke, exhaustion, cramps or rashes. This can lead to occupational illnesses and injuries. Avoid this by wearing the right personal cooling apparel for your job.



### Sports

Sports activities in high temperatures for long periods of time can lead to dehydration and heatstroke. Heatstroke is a life-threatening condition. Be prepared and protect yourself from heat stroke and heat exhaustion by wearing the right cooling apparel!



### Animals

It is normal for your dog to be panting on a hot summer day, but your dog can quickly go from being a bit warm to suffering from the initial stages of heat stroke. Heat stroke is incredibly dangerous and often fatal. It affects dogs of all shapes, sizes and ages. Keep your dog comfortably cool with a dog cooling vest or a cooling mattress!



### Wellness

Cooling is proven to be a safe and effective way to burn extra calories and lose weight, we've made it easy by developing the right garment and making it accessible for everyone, this by using our lifelong experiences and innovative technology. On page 38 you can find the new Cool2Shape products



### Healthcare

With multiple sclerosis (MS), you may experience heat intolerance, which is worsening your symptoms when exposed to heat. Wearing a cooling vest will make you feel more comfortable and may even relieve some of your symptoms. The INUTEQ products are also used to keep doctors and nurses cool in protective suits.



### Motorcycling

Riding in extreme temperatures not only feels like having a giant hair dryer blowing at you, but it can also be very dangerous. The beginnings of heat stroke can affect your judgement and impair your ability to ride a motorcycle safely. By taking precautions and wearing the right cooling apparel, you can beat the heat and ride safely!



### Military / Police

The very nature of the soldier's or agent's profession -- training outdoors, wearing uniforms and carrying equipment -- practically guarantees they will be exposed to heat stress. Combat the heat by wearing the right professional personal cooling apparel.



### Outdoor recreation

Recreative activities in high temperatures for long periods of time can lead to dehydration and heatstroke. Heat stress may affect people aged 65 years and over even more than others. Wear a cooling vest or one of the cooling accessories to stay comfortably cool.

# HELP ME CHOOSE WHICH COOLING SOLUTION IS THE BEST FOR ME

Check here which technology and related product work best for your personal application and in which environmental condition.

	Effective cooling time during average use	Does it perform well							Suitable for high activity	Requirements to activate
		in warm conditions under 40°C / 104°F	in hot conditions above 40°C / 104°F	in low-mid humid conditions	in high humid conditions	underneath breathable garments	underneath hazmat / airtight suits	without airflow		
<b>DRY®</b>	Up to 72 hours	✓	Low	✓	Low	✓	✗	✗	✗	Tap Water
<b>H2O®</b>	Up to 8 hours	✓	Low	✓	Low	✓	✗	✗	✓	Tap Water
<b>PVA®</b>	Up to 4 hours	✓	✓	✓	✓	✓	✗	Low	✓	Tap Water
<b>QCK®</b>	Up to 1 hour	✓	✓	✓	✓	✓	✗	Low	✓	Tap Water
<b>PAC®   16,5°C / 44°F</b>	Up to 2 hours	✓	✓	✓	✓	✓	✓	✓	✓	Freezer
<b>PAC®   15°C / 59°F</b>	Up to 2,5 hours	✓	✓	✓	✓	✓	✓	✓	✓	Freezer/Fridge/Ice Water or in temp<10°C / 50°F
<b>PAC®   21°C / 70°F</b>	Up to 3 hours	✓	✓	✓	✓	✓	✓	✓	✓	Freezer/Fridge/Ice Water or in temp<19°C / 66°F
<b>PAC®   24°C / 75°F</b>	Up to 3,5 hours	✓	✓	✓	✓	✓	✓	✓	✓	Freezer/Fridge/Ice Water or in temp<21°C / 70°F
<b>PAC®   29°C / 84°F</b>	Up to 4,5 hours	✓	✓	✓	✓	✓	✓	✓	✓	Freezer/Fridge/Ice Water or in temp<26°C / 79°F

## WHY IS **PERSONAL COOLING** ESSENTIAL?

Everybody owns a rain coat, and in every house you will find clothes for colder periods. But only few people use wearables to protect them from the heat.

Isn't that odd?

Are you going to jump into the water when it's getting really warm? Take a cold shower? Or take off your clothes? In many cases that's not an option. When you are at the office for example, playing golf, playing golf, tennis, jogging, attending a festival or working in a factory.

Cooling is essential in these circumstances. To continue what you are doing, stay comfortable, and to keep your performance up. To stay safe, to not overheat, and to not lose control.



*Avoid alcohol,  
coffee and soda*



*Drink water  
every hour*



*Wear personal  
cooling apparel*



*Take a 15 minute  
break every 2 hours*

### **HEAT STRESS** PREVENTION TIPS



## COOLING PRODUCTS HELP TO AVOID HEAT STRESS

Heat is an occupational safety and health hazard. Excessive heat during work creates health risks; it restricts a worker's physical functions and capabilities, work capacity and productivity. Temperatures above 24 – 26°C are associated with reduced labour productivity. At 33 – 34°C, a worker operating at moderate work intensity loses 50% of his or her work capacity.

Exposure to excessive heat levels can lead to heatstroke, sometimes even with a fatal outcome. Workers in all sectors are affected, but certain occupations are especially at risk because they involve more physical effort and/or take place outdoors. Such jobs are typically found in agriculture, environmental goods and services (natural resource management), construction, refuse collection, emergency repair work, transport, tourism and sports. Industrial workers in indoor settings are also at risk if temperature levels inside factories and workshops are not regulated properly. At high heat levels, performing even basic office and desk tasks becomes difficult as mental fatigue sets in.

## THE ADVANTAGES OF WEARING PERSONAL COOLING APPAREL:

- Better thermal comfort
- Reduces sweating & transpiration
- Decreases core and skin temperature
- Lowers the heart rate
- Better concentration
- Increases performance
- Avoid heat stress symptoms
- Quicker recovery

### WHAT ARE THE EFFECTS WHEN YOUR BODY FIGHTS THE INCREASING TEMPERATURE?



Excessive sweating,  
clammy skin



Your heart  
rate will increase



You start to  
feel uncomfortable



You will  
get tired



Dizziness and  
confusion, fast  
breathing or pulse



You will lose  
concentration  
(up to 40 %)



Productivity  
drops significantly



You will get  
a headache



Your ability to react  
slows down, which may  
imply unsafetyness

## INUTEQ DRY TECHNOLOGY

---

INUTEQ-DRY® is a revolutionary evaporative cooling technology. The INUTEQ-DRY® cooling solution only requires a limited quantity of water (a vest filled with 500 ml) to provide maximum cooling for 8 up to 72 hours. Our products can be easily activated by filling them with tap water, after which the cooling process will start instantly. The cooling effect is based on the principle of natural evaporation, and therefore the result is dependent on local humidity and airflow.

The INUTEQ-DRY® technology is a durable solution, all products are machine washable and have antibacterial treatment. INUTEQ-DRY® guarantees that you will stay 100% dry. Our products will cool you down from 5°C up to 15°C below ambient temperature. The INUTEQ-DRY® products perform best in environments with a low to average degree of humidity. The level of airflow determines the cooling effect.







STAY COOL  
KEEP THE  
FOCUS

### ACTIVATION IS EASY



#### FILL WITH WATER

Just fill the product with (tap) water.



#### DIVIDE & SQUEEZE

Distribute the water evenly and squeeze out any excess water.



#### ENJOY IMMEDIATE COOLING

Your product is now ready to use, instantly creating a cooling effect for up from 8 until 72 hours, depending on the ambient temperature, humidity and airflow.

## INUTEQ-DRY PRODUCTS

- Easy to use and re-use
- Machine washable
- Antibacterial treatment
- Provides up to 15°C cooling relief below ambient temperature
- Offers 8 to 72 hours of cooling comfort



**Colors:** Black  
Fluor yellow  
White

**Size:** S/M, L/XL,  
2XL/3XL

### Components

**Exterior:** INUTEQ-DRY®  
Nylon Jersey 50%,  
PU 50%, Antibacterial  
treatment

**Core:** INUTEQ-DRY® technology  
wicking polyester fleece

**Interior:** INUTEQ-DRY® Nylon

**Black:** #11020101

**Yellow:** #11020107

**White:** #11020109



**Colors:** Black  
Silver Grey  
Fluor yellow

**Size:** XS, S, M, L, XL, 2XL,  
3XL, 4XL, 5XL

### Components

**Exterior:** INUTEQ-DRY® Nylon Jersey  
50%, PU 50%, MICROBAN®  
Antibacterial treatment

**Core:** INUTEQ-DRY® technology  
wicking polyester fleece

**Interior:** INUTEQ-DRY® Nylon

**Black:** #11130601

**Silver Grey:** #11130602

**Fluor Yellow:** #11130607



**Colors:** Silver Grey  
Fluor Yellow  
White

**Size:** One size

**Components**

**Exterior:** INUTEQ-DRY®  
Nylon Jersey 50%,  
PU 50%, Ultra Fresh  
Antibacterial treatment

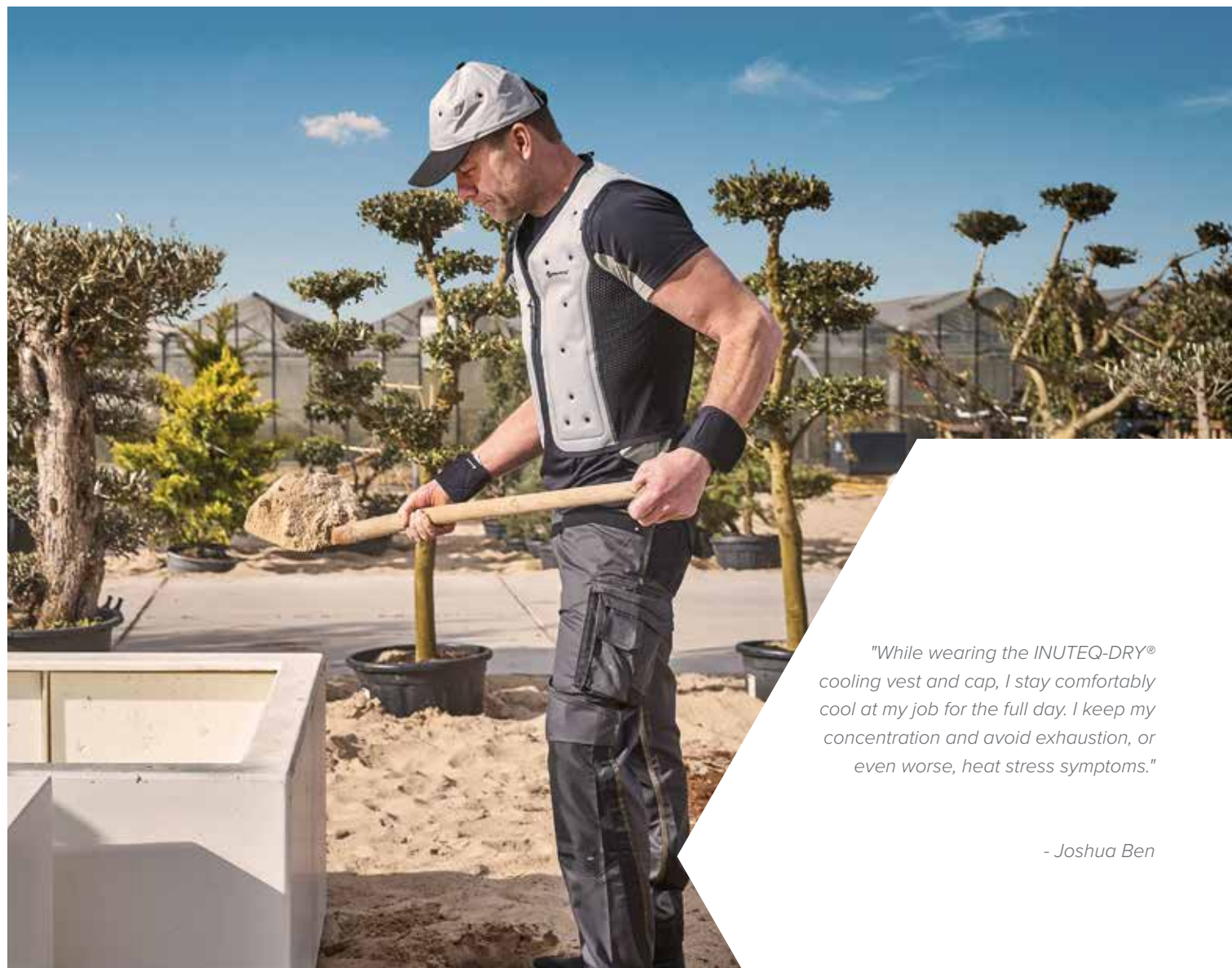
**Core:** INUTEQ-DRY®  
technology wicking  
polyester fleece

**Interior:** INUTEQ-DRY® Nylon

**Silver:** #1111020200

**Fluor Yellow:** #1111020700

**White:** #1111020900



*"While wearing the INUTEQ-DRY® cooling vest and cap, I stay comfortably cool at my job for the full day. I keep my concentration and avoid exhaustion, or even worse, heat stress symptoms."*

- Joshua Ben

## INUTEQ H2O TECHNOLOGY

---

INUTEQ-H2O® technology offers the highest standard in evaporation cooling at low cost. The INUTEQ-H2O® products are activated by soaking them in water for 2 minutes. After excess water is gently squeezed out they are ready to wear. Depending on the humidity and airflow, these products will cool you down from 5°C up to 15°C below the ambient temperature for 2 up to 8 hours.

All INUTEQ-H2O® evaporative products are machine washable and have antibacterial properties. The INUTEQ-H2O® cooling vests are finished with water-repellent lining to keep the inside dry. The INUTEQ-H2O® products perform best in environments with a low to average degree of humidity. The level of airflow determines the cooling effect.





STAY COOL  
STAY  
SHARP

## ACTIVATION IS EASY



### SOAK IN WATER

Just soak in water for a maximum of two minutes.



### GENTLY PRESS OUT EXCESS WATER



### ENJOY IMMEDIATE COOLING

Your product is now ready to use, instantly creating evaporative cooling for two up to eight hours, depending on the ambient temperature, humidity and airflow.

## INUTEQ-H2O PRODUCTS

- Easy to use and re-use
- Machine washable
- Antibacterial properties
- Lightweight
- Provides cooling relief up to 15°C below ambient temperature
- Offers 2 to 8 hours of cooling comfort



BODYCOOL T-SHIRT

**Colors:** Black, White, Bright Blue

**Size:** XS, S, M, L, XL, 2XL, 3XL

### Components

**Exterior:** 100% Polyester Fabric

**Core:** INUTEQ-H2O® superabsorbent cooling fabric with antibacterial properties

**Interior:** 100% Polyester Fabric with PU coating

**Black:** #12000101  
**White:** #12000109  
**Bright Blue:** #12000103



BODYCOOL SPEED COOLOVER

**Colors:** Black/Grey

**Size:** 2XS/XS, S/M, L/XL, 2XL/3XL

### Components

**Exterior:** 100% Polyester Fabric

**Core:** INUTEQ-H2O® superabsorbent cooling fabric with antibacterial properties

**Interior:** 100% Polyester Fabric with PU coating

**Black/Grey:** #120202



BODYCOOL PRO-X

**Colors:** Blue, Orange

**Size:** 3XS, 2XS, XS, S, M, L, XL, 2XL

### Components

**Exterior:** 100% Polyester Fabric

**Core:** INUTEQ-H2O® superabsorbent cooling fabric with antibacterial properties

**Interior:** 100% Polyester Fabric with PU coating

**Panels:** Polyester Mesh

**Blue:** #12180203  
**Orange:** #12180205



**Colors:** Black, Silver, Yellow

**Size:** XS, S, M, L, XL, 2XL, 3XL, 4XL

**Components**

**Exterior:** 100% Polyester Fabric

**Core:** INUTEQ-H2O® superabsorbent cooling fabric with antibacterial properties

**Interior:** 100% Polyester Fabric with PU coating

**Black:** #12130201  
**Yellow:** #12130207  
**Silver:** #12130202



**Colors:** Yellow, Orange, Orange-RWS

**Size:** S, M, L, XL, 2XL, 3XL, 4XL

**Components**

**Exterior:** 100% Polyester Fabric

**Core:** INUTEQ-H2O® superabsorbent cooling fabric with antibacterial properties

**Interior:** 100% Polyester Fabric with PU coating

**Yellow:** #12040207  
**Orange:** #12040205  
**Orange-RWS:** #12050105



## THE ADVANTAGES OF WEARING PERSONAL COOLING APPAREL:

- Better thermal comfort
- Reduces sweating & transpiration
- Decreases core and skin temperature
- Lowers the heart rate
- Better concentration
- Increases performance
- Avoid heat stress symptoms
- Quicker recovery



## INUTEQ-H2O PRODUCTS

- Easy to use and re-use
- Machine washable
- Antibacterial properties
- Lightweight
- Provides cooling relief up to 15°C below ambient temperature
- Offers 2 to 8 hours of cooling comfort



HEADCool  
POWER

**Colors:** Black, Grey, Blue, Khaki, Orange, Yellow  
**Size:** S/M, L/XL

### Components

**Exterior:** 100% Polyester Fabric  
**Core:** INUTEQ-H2O® superabsorbent cooling fabric with antibacterial properties  
**Interior:** 100% Polyester Fabric with PU-coating

**Black:** #12110101  
**Grey / Black:** #12110102  
**Blue / Black:** #12110103  
**Khaki / Black:** #12110104  
**Orange / Black:** #12110105  
**Yellow / Black:** #12110107  
**White / Black:** #12110109



HEADCool  
BANDANA

**Colors:** Black, Bright Blue, Orange, Yellow  
**Size:** One size

### Components

**Exterior:** 100% Polyester Fabric  
**Core:** INUTEQ-H2O® superabsorbent cooling fabric with antibacterial properties  
**Interior:** 100% Polyester Fabric

**Black:** #1216010100  
**Bright Blue:** #1216010300  
**Orange:** #1216010500  
**Yellow:** #1216010700



NECKCool  
PRO

**Colors:** Black, Grey  
**Size:** One size

### Components

**Exterior:** 100% Polyester Fabric  
**Core:** INUTEQ-H2O® superabsorbent cooling fabric with antibacterial properties  
**Interior:** 100% Polyester Fabric

**Black:** #1223020100  
**Grey:** #1223020200





WRISTCOOL  
PRO (SET)

**Colors:** Black, Grey

**Size:** One size

**Components**

**Exterior:** 100% Polyester Fabric  
**Core:** INUTEQ-H2O® superabsorbent cooling fabric with antibacterial properties

**Interior:** 100% Polyester Fabric

**Black:** #1227020100  
**Grey:** #1227020200



NECKCOOL  
HELMET  
BASIC

**Colors:** Yellow, Silver

**Size:** One size

**Components**

**Exterior:** 100% Polyester Fabric  
**Core:** INUTEQ-H2O® superabsorbent cooling fabric with antibacterial properties

**Interior:** 100% Polyester Fabric with PU coating

**Yellow:** #1222010700  
**Silver:** #1222010200



HEADCOOL  
HELMET  
BASIC

**Colors:** Yellow, Silver

**Size:** One size

**Components**

**Exterior:** 100% Polyester Fabric  
**Core:** INUTEQ-H2O® superabsorbent cooling fabric with antibacterial properties

**Interior:** 100% Polyester Fabric with PU coating

**Yellow:** #1218010700  
**Grey:** #1218010200



Neckcool  
Helmet  
Basic

Headcool  
Helmet  
Basic

## INUTEQ PVA TECHNOLOGY

---

The INUTEQ-PVA® evaporative cooling technology is a highly absorbent Polyvinyl Alcohol Fabric. INUTEQ-PVA® products are activated by soaking them in water for one minute. After squeezing out excess water they are ready for use.

The INUTEQ-PVA® products will cool you down for several hours. Products are machine washable. Using the INUTEQ-PVA® evaporative cooling products is a fast and easy way to beat the heat and stay fresh and cool.

The INUTEQ-PVA® products perform best in environments with a low to average degree of humidity. The level of airflow determines the cooling effect.





STAY COOL  
BECOME A  
CHAMP

### ACTIVATION IS EASY



#### SOAK IN WATER

Just soak the product in water for one minute.



#### SQUEEZE

Gently squeeze out the excess water.



#### ENJOY IMMEDIATE COOLING

Your product is now ready to use, instantly creating a cooling effect for up to several hours.

## INUTEQ-PVA PRODUCTS

- Easy to use and re-use
- Machine washable
- Provides up to 15°C cooling relief below ambient temperature



BODYCOOL  
XTREME

**Colors:** Black/Grey, Blue

**Size:** XS, S, M,  
L, XL, 2XL

### Components

**Exterior:** 100% Polyvinyl Alcohol Fabric with Polyester breathable knitted eyelet fabric.

**Black/Grey:** #15130201

**Blue:** #15130103



COOLING  
TOWEL

**Colors:** Blue, Orange, Grey  
Yellow, Green, Pink

**Size:** 78 cm x 33 cm  
30,7 inch x 12,9 inch

### Components

**Exterior:** 100% Polyvinyl Alcohol Fabric

**Blue:** #1530010300

**Orange:** #1530010500

**Yellow:** #1530010700

**Green:** #1530010600

**Pink:** #1530011000

**Grey:** #1530010200



BODYCOOL  
XTREME  
SPORT

**Colors:** White/Grey

**Size:** XS, S, M,  
L, XL, 2XL

### Components

**Exterior:** 100% Polyvinyl Alcohol Fabric with Polyester breathable knitted eyelet fabric.

**White/Grey:** #15080309



**Colors:** Yellow/Grey

**Size:** XS, S, M,  
L, XL, 2XL

**Components**

**Exterior:** 100% Polyvinyl Alcohol Fabric with Polyester breathable knitted eyelet fabric.

**Yellow/Grey:** #15080107



*'We work constantly on training, innovation, nutrition, aerodynamics and everything else that ensures top performance during the races. Being in cycling, it's all about total body control. Science goes fast, everything is getting better and more efficient. That is why I am really happy with INUTEQ, who continuously designs new products that absolutely help us with that.'*

*The most important thing is that the vest cools on a very large body surface and at the same time you hardly feel that you are wearing something extra with additional weight. If you have that comfort level, you will benefit more and more from it. And that is what we notice when our riders use the INUTEQ vests, which is why I am convinced of these cooling products!'*

*- Mathieu Heijboer  
head of performance*



## INUTEQ QCK TECHNOLOGY

The cooling effect generated by these products and technology is not chemically treated, but comes from the special technology within the INUTEQ-QCK® cooling fabric.

The INUTEQ-QCK® fabric is extremely strong, soft and flexible as well as lightweight. INUTEQ-QCK® products are ideal for sports, camping, exercising, leisure or any outdoor activity where you need some comfortable cooling. Simply 'WET IT' – 'WRING IT' and 'SNAP IT' – ready to use!



**Colors:** Blue  
Black

**Size:** 85 cm x 30 cm  
33,4 inch x 11,8 inch

Including  
storage box

### Components

**Exterior:** 100% Instant  
Cooling Fabric

**Blue:** #1631019300

**Midnight**

**Black:** #1631020200





STAY COOL  
FAST, EASY  
AND  
EFFECTIVE

### ACTIVATION IS EASY



#### WET IT - SOAK IN WATER

Just soak in water for a maximum of two minutes.



#### WRING IT - SQUEEZE

Gently squeeze out the excess water.



#### SNAP IT

Just wave the product 2 times and it's ready to use.



#### ENJOY IMMEDIATE COOLING

Your product is now ready for use, an immediate cooling effect for up to a few hours.

# INUTEQ PAC TECHNOLOGY

The INUTEQ-PAC® is a revolutionary performance technology. This bio-based Phase Change Material (PCM) is available in 5 different temperatures: 6,5°C / 44°F, 15°C / 59°F, 21°C / 70°F, 24°C / 75°F and 29°C / 84°F.

This unique INUTEQ-PAC® phase change technology has a high latent heat, which makes it ideal for use in various thermal management applications.

The INUTEQ-PAC® products, powered by CrodaTherm bio-based PCM, offer higher flash fire points than their paraffin equivalents. As proven during fire safety tests, the INUTEQ-PAC® products out-perform their paraffin equivalents, providing a safer product for professionals dealing with strict fire safety regulations.

**The only REACH and USDA certificated 100% bio-based PCM on the market!**







KEEP COOL  
STAY  
HEALTHY

## ACTIVATION IS EASY



### COOL THE PACK

Simply put the product in ice water, refrigerator or freezer, or store it at a lower temperature until it becomes fully solid.



### INSERT IN YOUR GARMENT



### ENJOY CONSTANT COOLING

Your garment is now ready to wear, creating cooling on a constant temperature level.

## INUTEQ-PAC PRODUCTS

- For when exact temperatures are essential
- Perform under any extreme temperature and under every level of humidity
- 100% bio-based phase change material
- Biodegradable
- Non-toxic, non-hazardous, noncorrosive
- Long term stability
- High latent heat capacities
- USDA certified
- REACH compliant



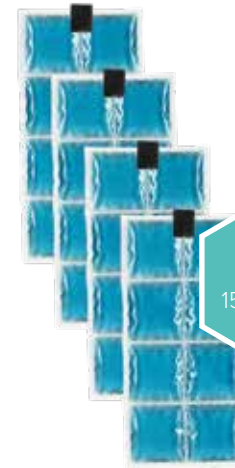
BODYCOOL  
PRO

**Colors:** Black  
**Size:** S, M, L, XL, 2XL, 3XL, 4XL

### Components

**Exterior:** Robust canvas  
**Liner/pockets:** Polyester mesh  
**Pockets for inserts:** Four (2 front, 2 Back)  
**Adjustable:** Waist line  
**Closure:** Front opening zipper

**Black:** #131301



PACS  
15°C / 59°F

**Colors:** Aqua  
**Size:** 15 cm x 31,4 cm  
5,9 inch x 12,3 inch

### Components

**Exterior:** INUTEQ-SEAL®  
**Interior:** 100% bio-based phase change material

**Aqua:** #1364031508



PACS  
21°C / 70°F

**Colors:** Yellow  
**Size:** 15 cm x 31,4 cm  
5,9 inch x 12,3 inch

### Components

**Exterior:** INUTEQ-SEAL®  
**Interior:** 100% bio-based phase change material

**Yellow:** #1364022108

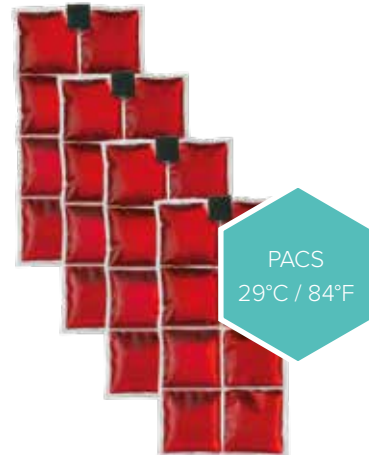


**Colors:** Transparent  
**Size:** 15 cm x 31,4 cm  
 5,9 inch x 12,3 inch

**Components**

**Exterior:** INUTEQ-SEAL®  
**Interior:** 100% bio-based phase change material

**Transparent:** #1364022408



**Colors:** Red  
**Size:** 15 cm x 31,4 cm  
 5,9 inch x 12,3 inch

**Components**

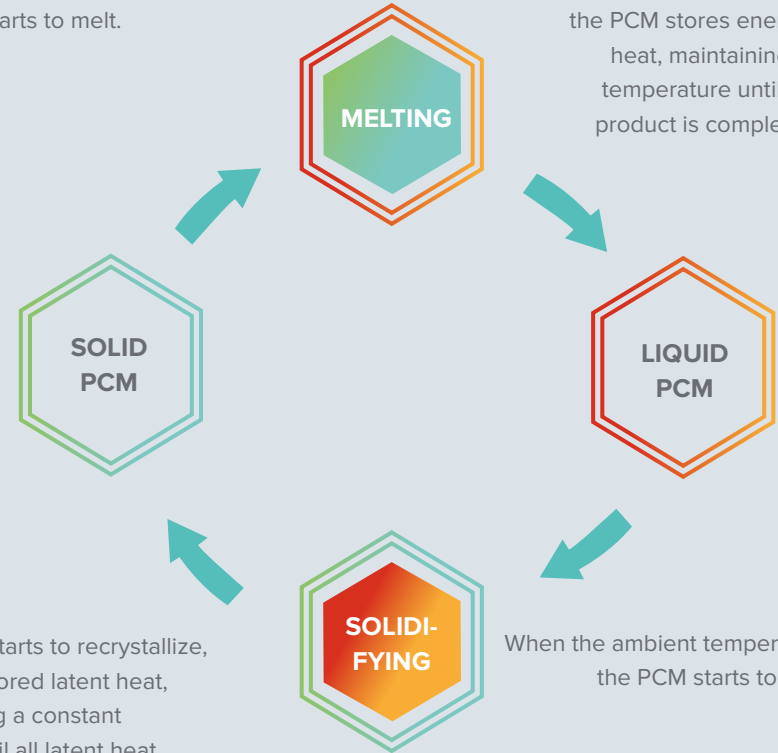
**Exterior:** INUTEQ-SEAL®  
**Interior:** 100% bio-based phase change material

**Red:** #1364022908

## THE PROCESS

When the ambient temperature rises, the PCM starts to melt.

During the phase transition, the PCM stores energy as latent heat, maintaining a constant temperature until the cooling product is completely melted.



When the PCM starts to recrystallize, it releases the stored latent heat, while maintaining a constant temperature, until all latent heat has been released.

When the ambient temperature lowers, the PCM starts to recrystallize.

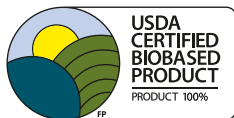
# THE PCM COOLOVER

This PCM CoolOver, manufactured in The Netherlands, offers constant cooling and heat stress protection for professionals who need expert cooling underneath protective clothing in (extreme) heat situations. This PCM CoolOver performs under extreme temperatures and under every level of humidity. Offering exact temperatures, the INUTEQ-PAC® PCM CoolOver is often used under military combat gear, hazardous materials suits, mascot costumes and other professional apparel.

Reactivation is fast and easy; simply put the PCM CoolOver in ice water, freezer or fridge, or just store it at a 3°C lower temperature until the CoolOver becomes fully solid.

Example: the 21°C / 70°F CoolOver can be activated in a room temperature of <18°C / 64°F.

Cleaning: simply clean with cleaning cloth with water or disinfectant.



PCM COOLOVER\*  
6,5°C / 44°F



PCM COOLOVER\*  
15°C / 59°F

**Color:** Orange  
**Size:** One size  
Maximum chest circumference:  
120 cm / 4,2 inch

**Components**  
**Material:** Biobased Phase Change Material  
**Foil:** INUTEQ-SEAL®  
**Adjustment:** Waist line  
**Closure:** Buckle system

**Orange:** #1302036536

**Color:** Aqua  
**Size:** One size  
Maximum chest circumference:  
120 cm / 4,2 inch

**Components**  
**Material:** Biobased Phase Change Material  
**Foil:** INUTEQ-SEAL®  
**Adjustment:** Waist line  
**Closure:** Buckle system

**Aqua:** #1302041536



PCM  
COOLOVER\*  
21°C / 70°F

**Color:** Yellow  
**Size:** One size  
Maximum chest circumference:  
120 cm / 4,2 inch

**Components**

**Material:** Biobased Phase Change Material  
**Foil:** INUTEQ-SEAL®  
**Adjustment:** Waist line  
**Closure:** Buckle system

**Yellow:** #1302022136



PCM  
COOLOVER\*  
24°C / 75°F

**Color:** Transparant  
**Size:** One size  
Maximum chest circumference:  
120 cm / 4,2 inch

**Components**

**Material:** Biobased Phase Change Material  
**Foil:** INUTEQ-SEAL®  
**Adjustment:** Waist line  
**Closure:** Buckle system

**Transparant:** #1302032436



PCM  
COOLOVER\*  
29°C / 84°F

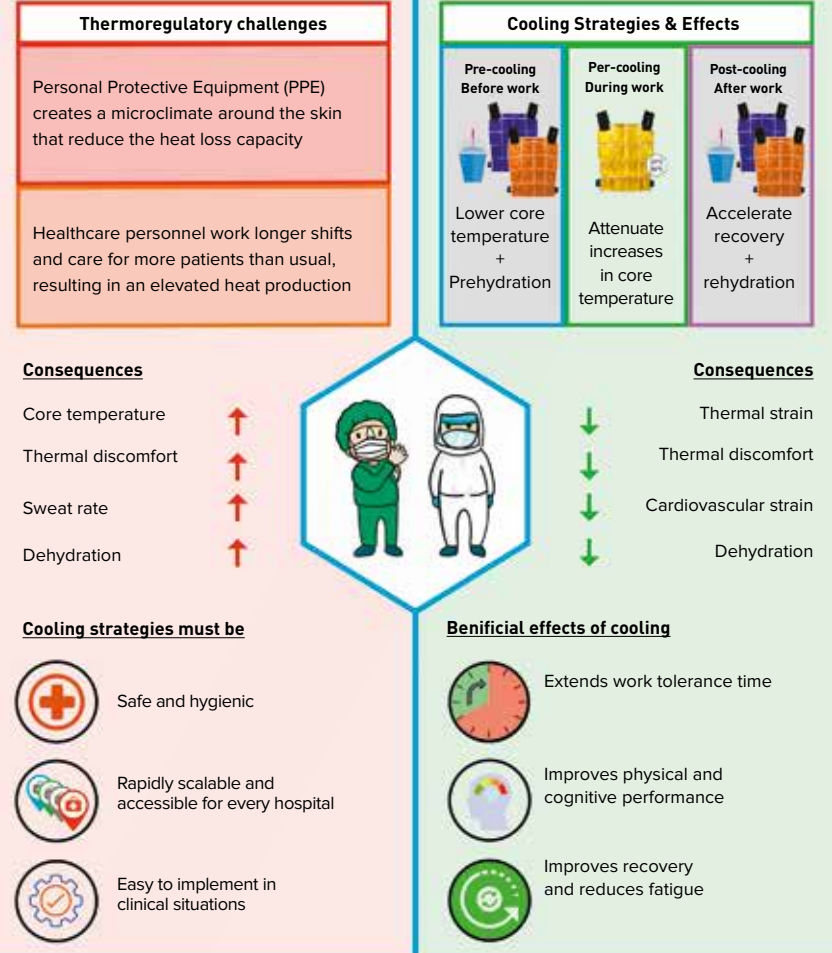
**Color:** Red  
**Size:** One size  
Maximum chest circumference:  
120 cm / 4,2 inch

**Components**

**Material:** Biobased Phase Change Material  
**Foil:** INUTEQ-SEAL®  
**Adjustment:** Waist line  
**Closure:** Buckle system

**Red:** #1302032936

**COOLING STRATEGIES TO ATTENUATE PPE-INDUCED HEAT STRAIN DURING THE COVID-19 PANDEMIC**



Twitter: @BongersCoen  
Email: Coen.Bongers@radboudumc.nl



## INUTEQ PAC & H2O TECHNOLOGY

'Athletes who precool can increase performance with 5,7% ( $\pm 1\%$ ) and with percooling (cooling during exercise) with 9,9% ( $\pm 1.9\%$ ). The combination of precooling and percooling technologies could be the most effective strategy to improve exercise performance in the heat', according to Dr. Thijs Eijvogels, one of the top authorities on thermoregulation.

*\*published 2015, British Journal of Sports Medicine \*\* Dr. Thijs M.H. Eijvogels, Department of Physiology, Radboud University Medical center - The Netherlands.*





STAY COOL  
BECOME  
AN OLYMPIC  
CHAMPION

## PAC ACTIVATION IS EASY



### COOL THE PACK

Simply put the product in ice water, refrigerator or freezer, or store it at a lower temperature until it becomes fully solid.



### INSERT IN YOUR GARMENT



### ENJOY CONSTANT COOLING

Your garment is now ready to wear, creating cooling on a constant temperature level.

## H2O ACTIVATION IS EASY



### SOAK IN WATER

Just soak in water for a maximum of two minutes.



### GENTLY SQUEEZE OUT EXCESS WATER



### ENJOY IMMEDIATE COOLING

Your product is now ready to use, instantly creating evaporative cooling for two up to eight hours, depending on the ambient temperature, humidity and airflow.

Photo: Toth Boglarka

## INUTEQ-PAC & H2O PRODUCTS

The Bodycool Hybrid vest is created for multiple sports purposes and commonly used as pre-post cooling vest by athletes, in combination with the INUTEQ-PAC® 6.5°C / 44°F or 15°C / 59°F bio-based PCM packs.

Hybrid cooling solution for ultimate relief: evaporative INUTEQ-H2O® Cooling Fabric for 2 - 8 hours of cooling relief per soaking and INUTEQ PAC® bio-based Phase Change Material inserts maintain a comfortable 6.5°C / 44°F or 15°C / 59°F for up to three hours.



**Colors:** Black/Grey  
White/Black

**Size:** XS, S, M, L, XL, 2XL

### Components

**Exterior:** 100% Polyester Fabric

**Core:** Superabsorbent INUTEQ-H2O® cooling fabric with antibacterial properties

**Liner:** Polyester with PU coating

**Pockets:** Polyester Mesh Four (2 Front, 2 Back)

**Closure:** Front Opening Zipper

**Black/Grey:** #14130102  
**White/Black** #14130109



**Colors:** Orange

**Size:** 15 cm x 31,4 cm  
5,9 inch x 12,3 inch

### Components

**Exterior:** INUTEQ-SEAL®

**Interior:** 100% bio-based phase change material

**Orange:** #1364022408



**Colors:** Aqua

**Size:** 15 cm x 31,4 cm  
5,9 inch x 12,3 inch

### Components

**Exterior:** INUTEQ-SEAL®

**Interior:** 100% bio-based phase change material

**Aqua:** #1364031508





Rinus van Kalmthout (born 11 september 2000) is an extremely talented Dutch racing driver, professionally known as Rinus VeeKay. He is the 2018 Champion of the Pro Mazda series, winning 7 of 16 races in his debut season. VeeKay is signed to drive the No. 21 Dallara-Chevrolet for Ed Carpenter Racing in the NTT IndyCar Series, in May 2021 he won his first IndyCar Victory . Rinus wears the Bodycool Hybrid for pre-post cooling and several evaporative cooling accessories to stay comfortably cool.



Some of our Elite Sports references:



# cool2shape

calorie burn by cooling

Cool2Shape is the new product line from INUTEQ® focusing on burning calories and increasing metabolism by cooling.

## The science

Cooling Vests stimulate Brown Adipose Tissue (brown fat) causing the consumption of calories. The science is backed by numerous international studies, scientific research and tests. Several studies mention the importance of brown fat and the potential of cold exposure to prevent increase in body weight.

## Benefits:

- Burn calories (potential to burn several hundred calories a day)
- Boost metabolism
- Activate brown fat (BAT) by blood supply and nerve impulses
- Induce cold thermogenesis
- Easy to use in daily routine
- Comfortably cool
- Constant Cooling Temperature



“Cooling is proven to be a safe and effective way to burn extra calories and lose weight, we’ve made it easy by developing the right garment and making it accessible for everyone, this by using our lifelong experiences and innovative technology.”

NEW!



**Color:** Black  
**Size:** One size

**Components**

**Exterior:** 50% nylon  
 5% spandex  
 45% neoprene

**Black:** #1313010100



**Color:** Aqua  
**Size:** 30 cm x 30 cm  
 11,8 inch x 11,8 inch

**Components**

**Exterior:** INUTEQ-SEAL®  
**Interior:** 100% bio-based  
 phase change  
 material

**Aqua:** #1313011516

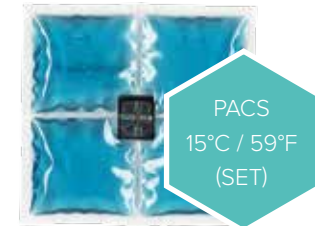


**Color:** Black  
**Size:** One size

**Components**

**Exterior:** 50% nylon  
 5% spandex  
 45% neoprene

**Black:** 1326010100



**Color:** Aqua  
**Size:** 15 cm x 15 cm  
 5,9 inch x 5,9 inch

**Components**

**Exterior:** INUTEQ-SEAL®  
**Interior:** 100% bio-based  
 phase change  
 material

**Aqua:** #1326011504

## COOL2SHAPE

Cool2Shape is the new product line from INUTEQ® focusing on burning calories and increasing metabolism by cooling.

### The science

Cooling Vests stimulate Brown Adipose Tissue (brown fat) causing the consumption of calories.

The science is backed by numerous international studies, scientific research and tests.

Several studies mention the importance of brown fat and the potential of cold exposure to prevent increase in body weight.



**Color:** Black  
**Size:** One size

### Components

**Exterior:** 50% nylon  
5% spandex  
45% neoprene

**Black:** #1329010100



**Color:** Black  
**Size:** One size

### Components

**Exterior:** 50% nylon  
5% spandex  
45% neoprene

**Black:** #1325010100



**Color:** Aqua  
**Size:** 15 cm x 31,4 cm  
5,9 inch x 12,36 inch

### Components

**Exterior:** INUTEQ-SEAL®  
**Interior:** 100% bio-based phase change material

**Aqua:** #1364031508

## INSULIN TRAVEL COOLER BAG

Insulin, a temperature-sensitive medication, is the only solution for many diabetics. When exposing your insulin to extremely high or low temperatures it can change its chemical composition. This can cause insulin to not behave as it should and not control your blood sugar.

Traveling is a part of life that can't be avoided, so there is only a single solution left. Carry your diabetic medication in an insulin travel cooler bag while traveling to keep your insulin safe and cool.

The INUTEQ insulin travel cooler bag keeps in-use insulin cool and safe at a constant cooling temperature of 15°C / 59°F for approximately one full day.



Powered by INUTEQ-PAC® 15°C / 59°F phase change material inserts; the only REACH compliant and USDA certificated 100% biobased PCM available on the market.



**Color:** Aqua  
**Size:** 20 cm x 11 cm x 5 cm  
 7,8 inch x 4,3 inch x 1,9 inch

### Components

**Outer material:** 100% 1680D waterproof polyester  
**Middle layer:** PE foam  
**Inner material:** Aluminium foil  
**Blue:** #1338010300

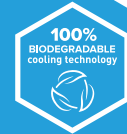


**Color:** Aqua  
**Size:** 18,5 cm x 8,5cm  
 7,0 inch x 3, 3inch

### Components

**Exterior:** INUTEQ-SEAL®  
**Interior:** 100% bio-based phase change material  
**Aqua:** #1362021501

NEW!



## INUTEQ BRANDING PRODUCTS

For more info or any  
questions, please  
contact us at:

Tel. +31 (0) 85 065 3797  
E-mail: support@inuteq.com



**Color:** Blue  
**Sizes:** 32 x 18 x 38 cm  
12,5 inch x 7,0 inch x  
14,9 inch

### Components

**Outer material:** 100% 1680D  
waterproof  
polyester  
**Middle layer:** PE foam  
**Inner material:** Aluminium foil

**Blue:** #1038020307



**Color:** Black  
**Sizes:** XS, S, M, L,  
XL, 2XL, 3XL

### Components

**Material:** 100% Polyester

**Black:** #10000201



REFRI-  
GERATOR  
LARGE



REFRI-  
GERATOR  
SMALL

This unique, lock-protected refrigerator is specially designed and furnished for the activation of the PCM CoolOvers.

#### Specifications

**Model Small:** LIEBHERR FKv  
1800

**Sizes small:** 85 x 60 x 60 cm  
33,4 inch x 23,6 inch x  
23,6 inch

**Productcode:** #1039010307

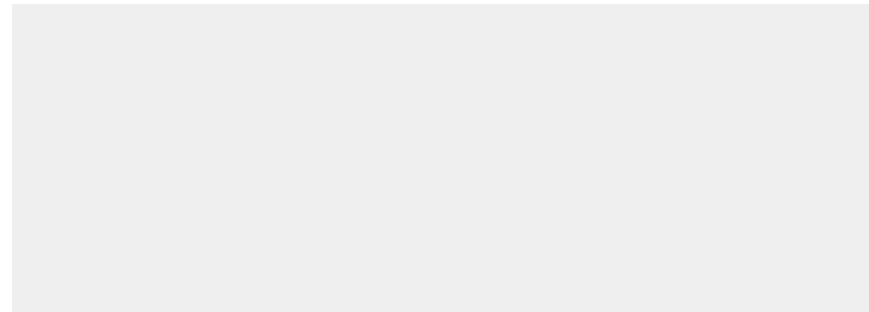
**Model Large:** LIEBHERR MRFvc 4001-20

**Sizes Large:** 188,4 x 59,7 x 65,4 cm  
74,0 inch x 23,2 inch  
x 25,5 inch

**Productcode:** #1039010309



## YOUR LOCAL DISTRIBUTOR



### **INUTEQ INTERNATIONAL B.V.**

Osnabrückstraat 30  
7418 BN Deventer  
The Netherlands

**Contact:**

Tel. +31 (0) 85 065 3797  
E-mail: [support@inuteq.com](mailto:support@inuteq.com)

**For sales or to**

**become a distributor:**  
[sales@inuteq.com](mailto:sales@inuteq.com)

[WWW.INUTEQ.COM](http://WWW.INUTEQ.COM)

