



EXTERIOR GUIDELINES

TABLE OF CONTENTS

The **Brand**

Renderings

Overall

Views

Site Plan

Store Plan

Elevations: Large & Small Marquee

Construction Materials

Signage

Illuminated Exterior Signage

Primary Logo

Secondary Logo Vertical Version

The Arrow

Signage Lockup Guidelines

Post and Panel

Cart Corral

Bicycle Rack

Eyebrow

Site Details

THE BRAND

We believe
LESS IS MORE
except when it comes to our
VALUES & STANDARDS.

We bring
**FRESH, HEALTHY, &
AFFORDABLE FOOD**
to more people in more places
EVERY DAY.



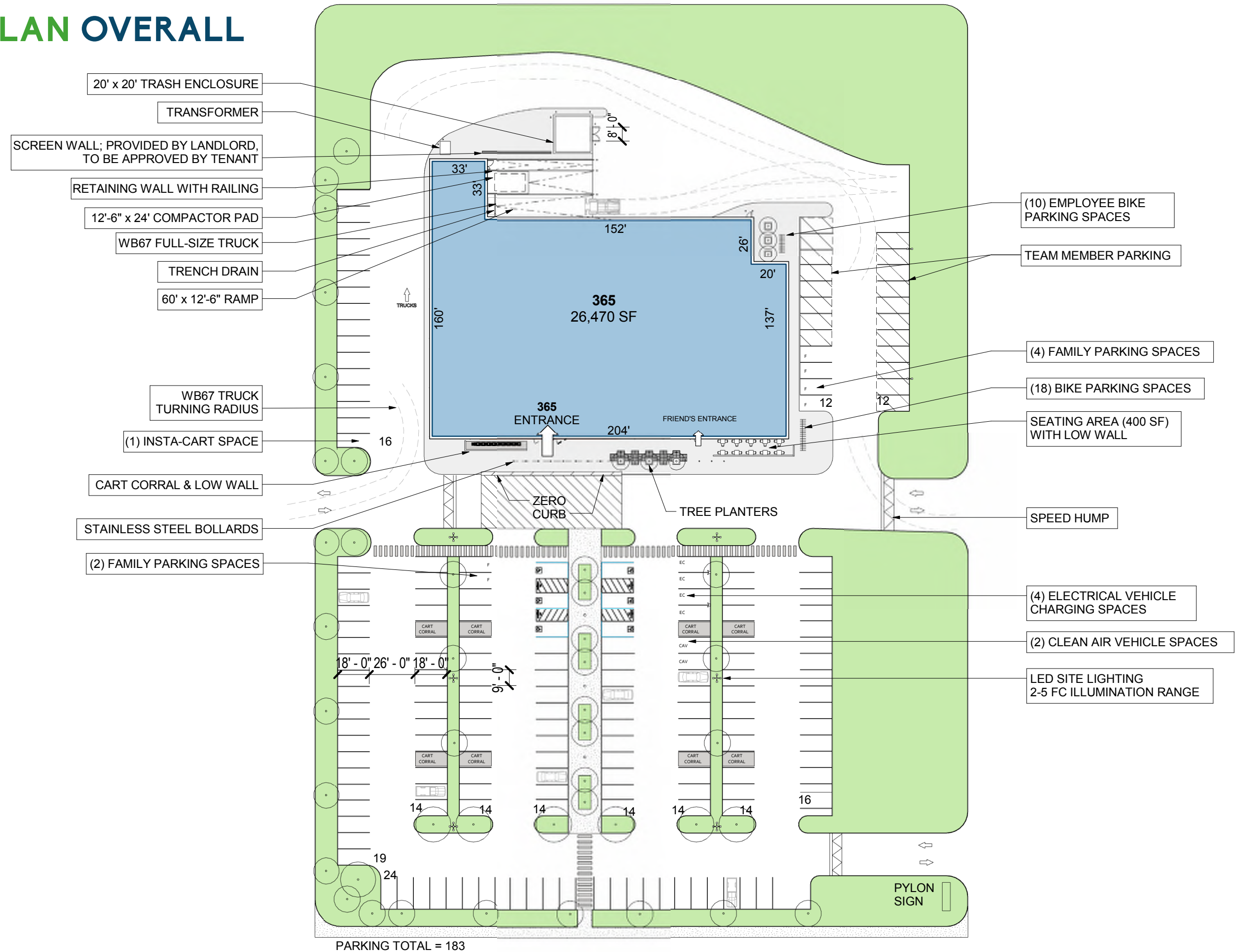
RENDERINGS OVERALL



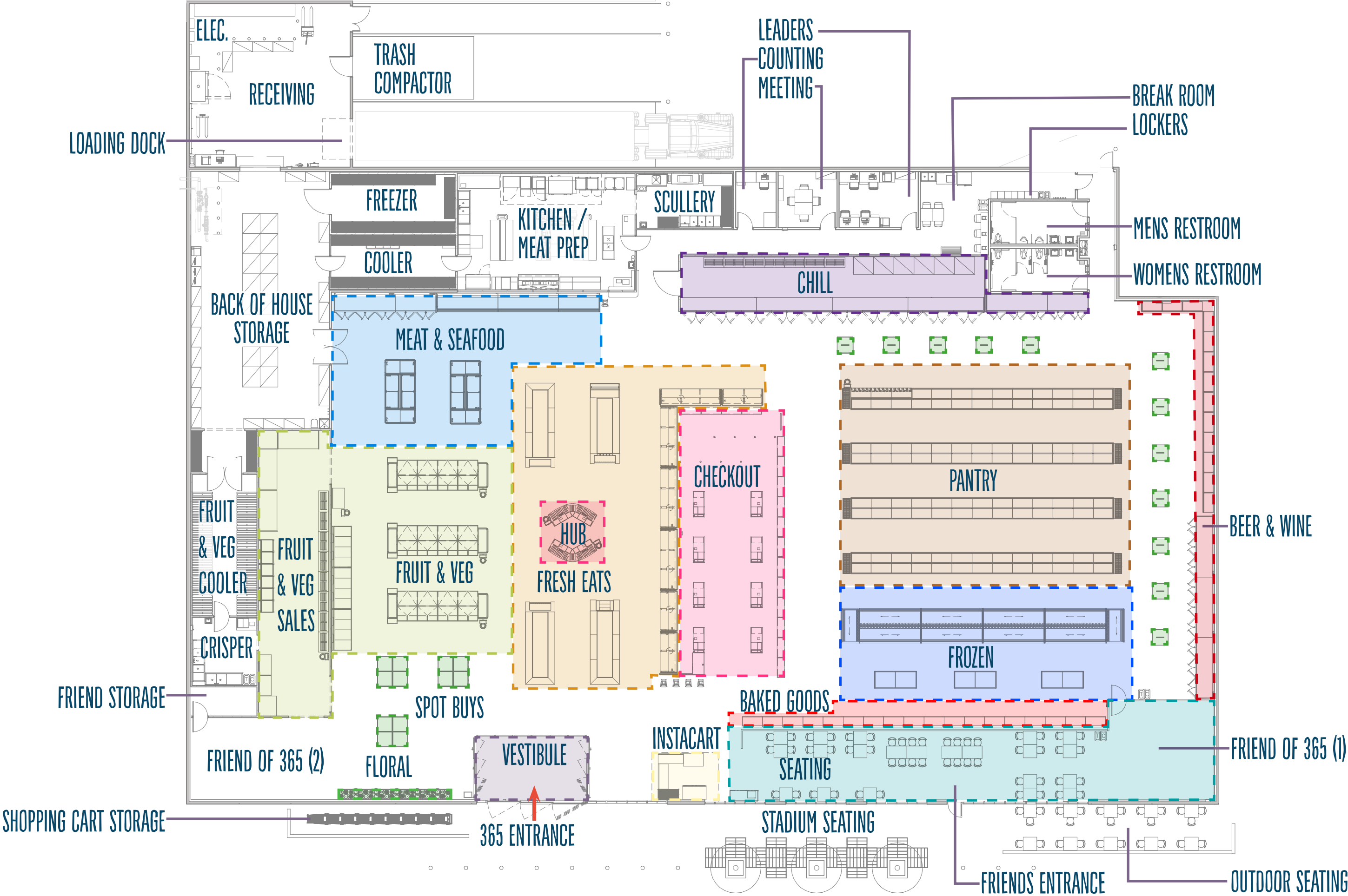
RENDERINGS VIEWS



SITE PLAN OVERALL



STORE PLAN DEPARTMENT ZONING



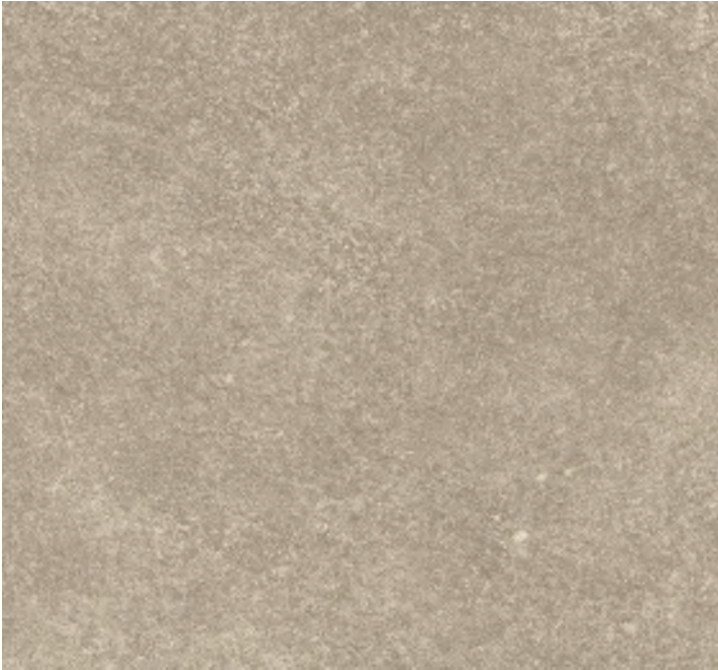
ELEVATION LARGE MARQUEE



ELEVATION SMALL MARQUEE



CONSTRUCTION MATERIALS



MARQUEE: COMPOSITE RESIN PANEL
Trespa NA 13 Silver Quartzite; rock texture



BASE BUILDING: PRECAST PANEL
Gate Precast: Color 152
Sandblasted white w/ granite aggregate.



BASE BUILDING AND LOW WALLS: MASONRY
Surface Matters masonry: color: Fire Ash,
dry block. Stack bond.



BASE BUILDING: GROOVED STUCCO
Horizontal and vertical parallel grooved stucco, w/
4'-0" O.C. black expansion joints. Color: Benjamin
Moore (low VOC) - Snow White 2212-70.



MULLION COLOR + STOREFRONT SYSTEM
Natural annodized aluminum mullions.
Clear glazing.



COLORED GLAZING FILM
3M
Colors to match 365 logo + arrow red



AUTOMATIC SLIDING DOOR
TORMAX: TX9430 Full breakout telescoping
slider RH, SX-SX-SO Conf: color: PMS 2188



EYEBROW - DARK BLUE
Morin: metal panels. Dark blue custom color, PMS
2188 part solid / part perforated.

SIGNAGE ILLUMINATED EXTERIOR



1 OVERALL ELEVATION



3 OPTION A - EXTERNALLY ILLUMINATED

PAINT APPLICATION APPLIED DIRECTLY ON BUILDING FACADE.

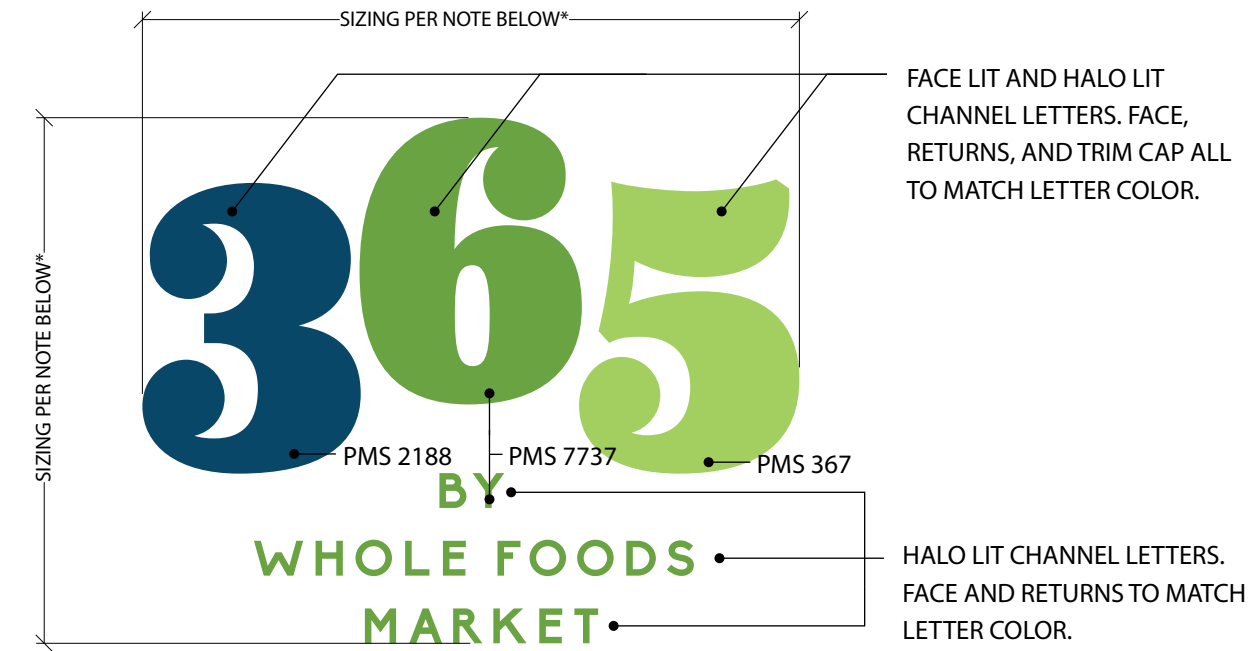
UPLIGHT FIXTURE TYPE: IGUZZINI LINEALUCE B752, LED WARM WHITE, 4'-0" LINEAR
FIXTURE SPACED 2'-0" APART. MOUNT AT BASE OF EYEBROW.

LOGO FILES TO BE PROVIDED.

*FINAL SIZE TO BE DETERMINED BASED ON LOCAL ZONING REQUIREMENTS AND FACADE
DESIGN.



2 DETAIL ELEVATION



4 OPTION A - INTERNALLY ILLUMINATED

POWER SUPPLY TO BE LOCATED BEHIND BUILDING FACADE. RACEWAY
MOUNTING TO BE AVOIDED.

LOGO FILES TO BE PROVIDED.

*FINAL SIZE TO BE DETERMINED BASED ON LOCAL ZONING REQUIREMENTS
AND FACADE DESIGN.

SIGNAGE PRIMARY LOGO



OPTION A
300 SQ FT

SCALE [1/4" = 1'-0"]



OPTION B
250 SQ FT

SCALE [1/4" = 1'-0"]



OPTION C
200 SQ FT

SCALE [1/4" = 1'-0"]



OPTION D
100 SQ FT

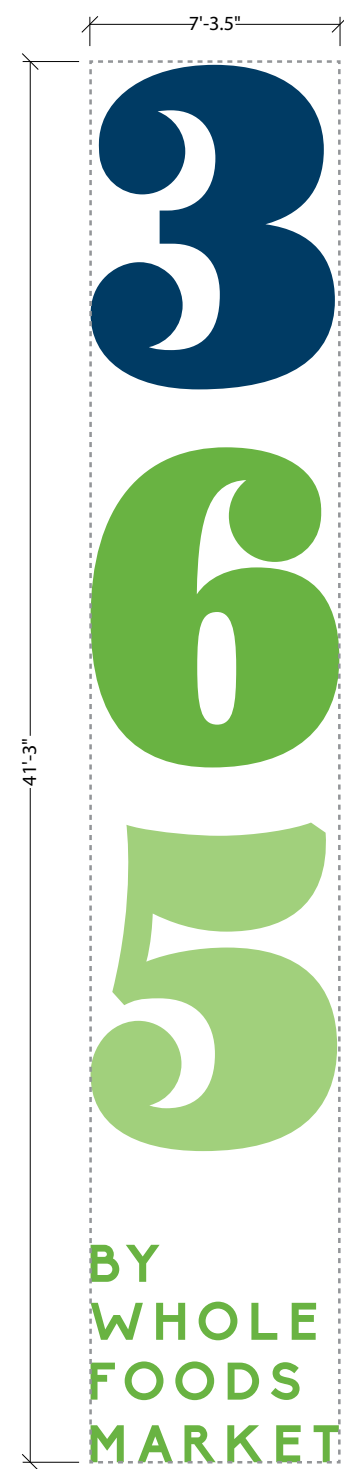
SCALE [1/4" = 1'-0"]



OPTION E
60 SQ FT

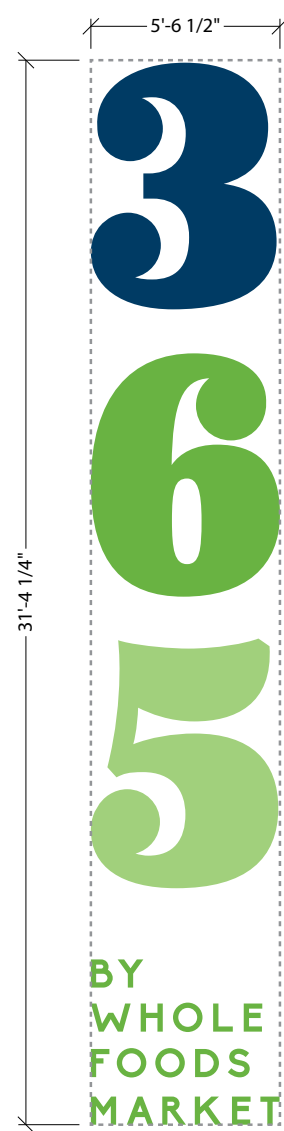
SCALE [1/4" = 1'-0"]

SIGNAGE SEONDARY LOGO VERTICAL VERSION



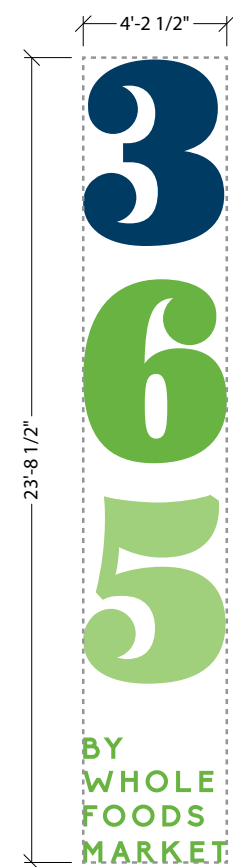
OPTION A
300 SQ FT

SCALE [3/16" = 1'-0"]



OPTION B
175 SQ FT

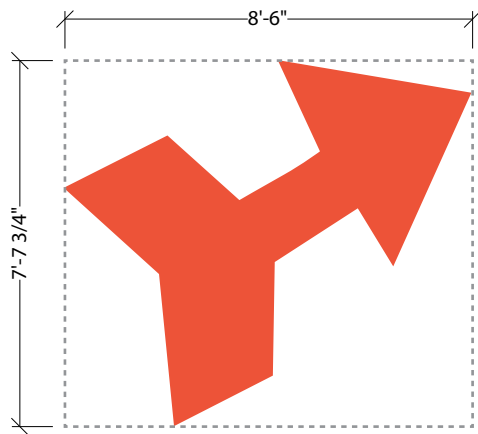
SCALE [3/16" = 1'-0"]



OPTION C
100 SQ FT

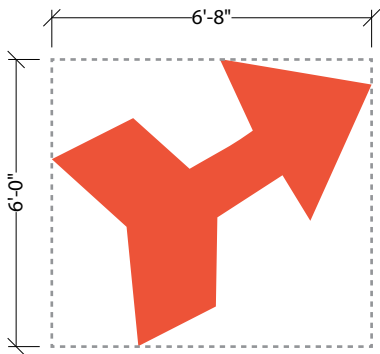
SCALE [3/16" = 1'-0"]

SIGNAGE THE ARROW



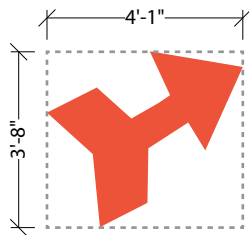
OPTION A
65 SQ FT

SCALE [1/4" = 1'-0"]



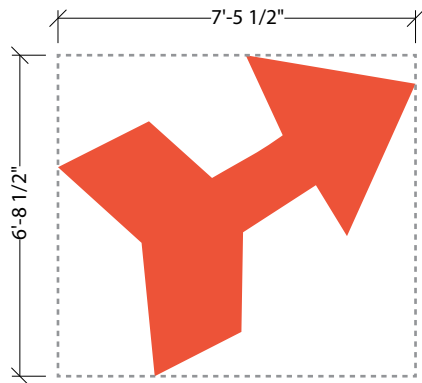
OPTION C
40 SQ FT

SCALE [1/4" = 1'-0"]



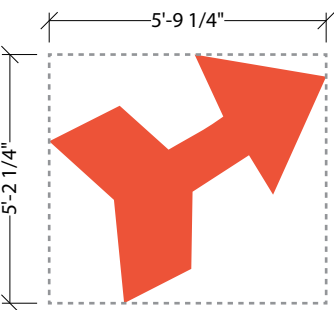
OPTION E
15 SQ FT

SCALE [1/4" = 1'-0"]



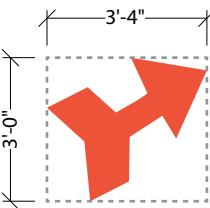
OPTION B
50 SQ FT

SCALE [1/4" = 1'-0"]



OPTION D
30 SQ FT

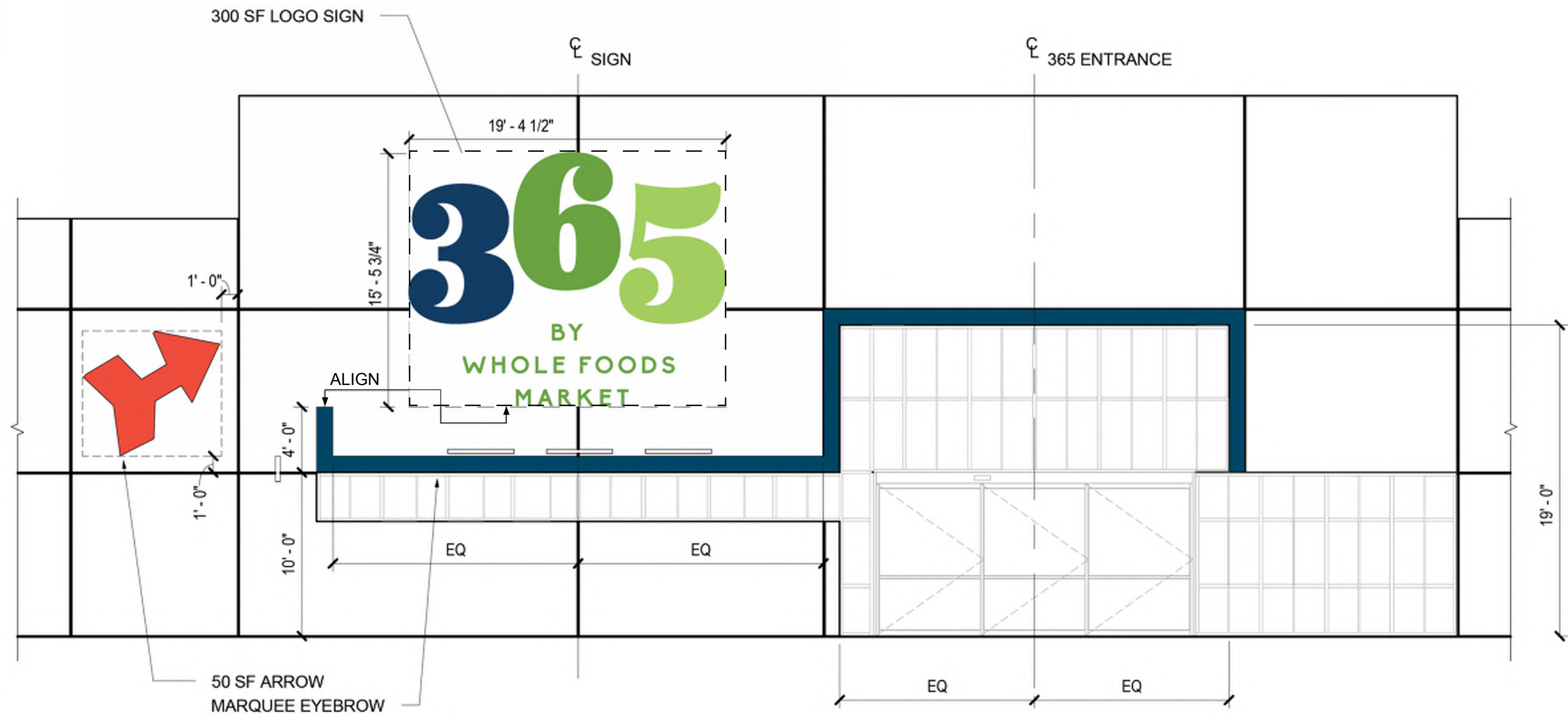
SCALE [1/4" = 1'-0"]



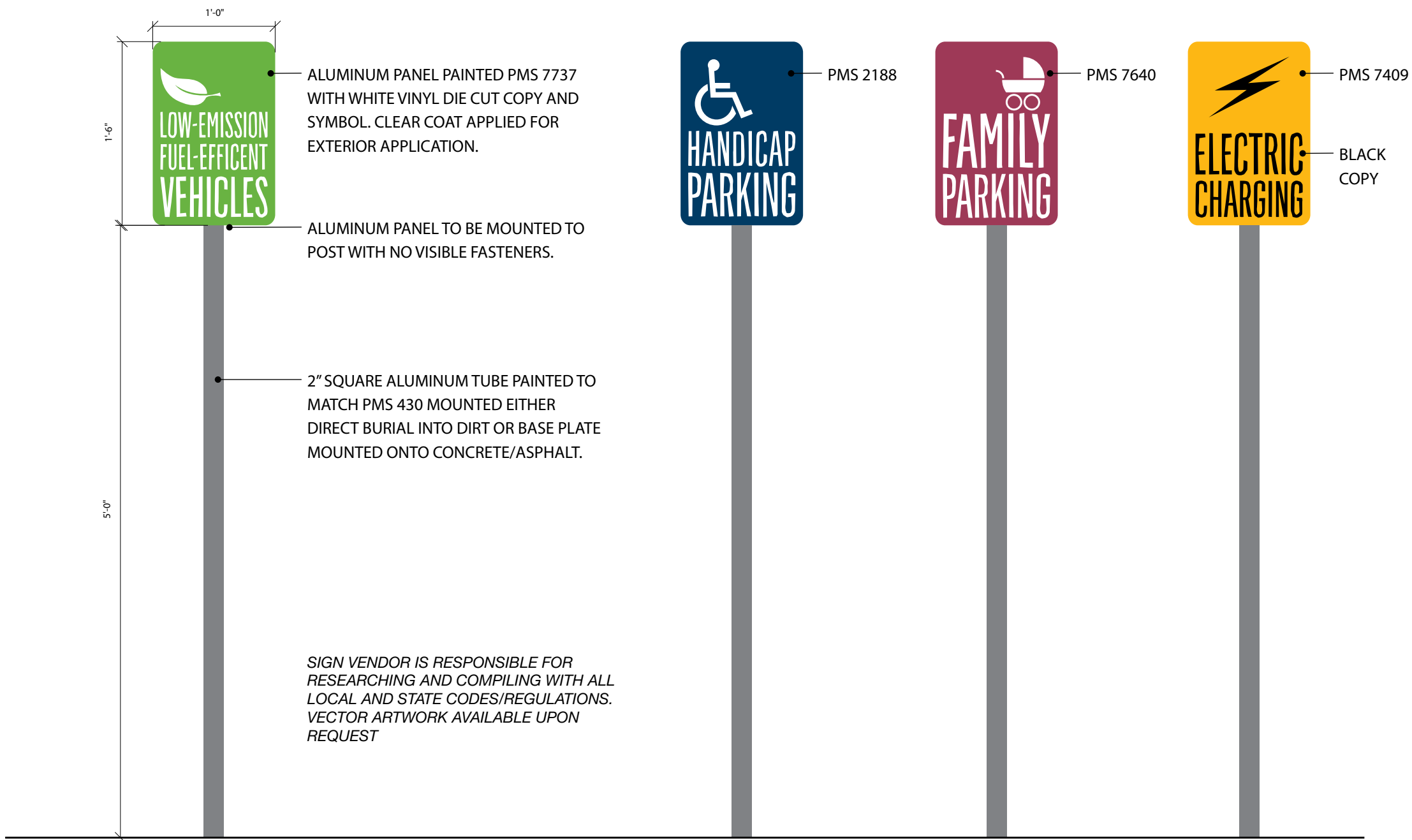
OPTION F
10 SQ FT

SCALE [1/4" = 1'-0"]

SIGNAGE LOCK UP GUIDELINES



SIGNAGE POST AND PANEL



1 ELEVATION - DOT STYLE POST AND PANEL
1"=1'-0"

SITE DETAILS CART CORRAL



Single-sided

Manufacturer: Brasco International
Product ID: CC2000 (fits 2 carts side by side)
Finish: Recycled anodized aluminum or Recycled aluminum with custom powder coated colors
Grillwork: Square
Banner: Square
Column Caps: Flat
Optional: Center divider rail

Banner artwork to be provided.



Double-sided

BICYCLE RACK

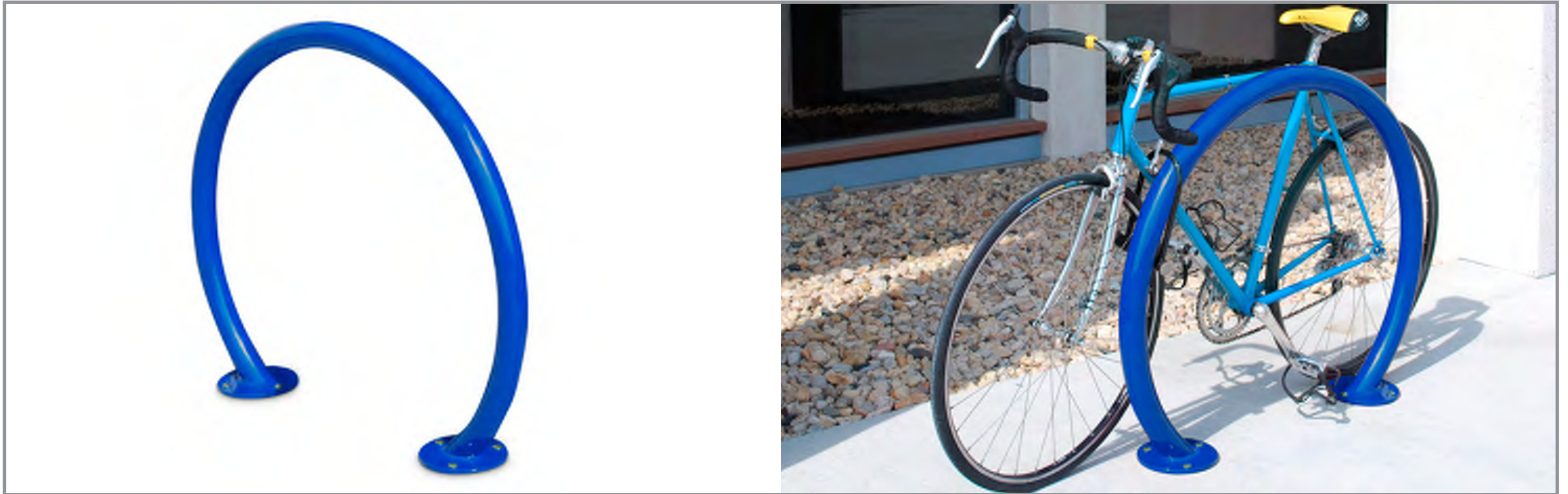
Manufacturer: Belson Outdoors

Product Name: Orion Bike Rack with Round Tubing

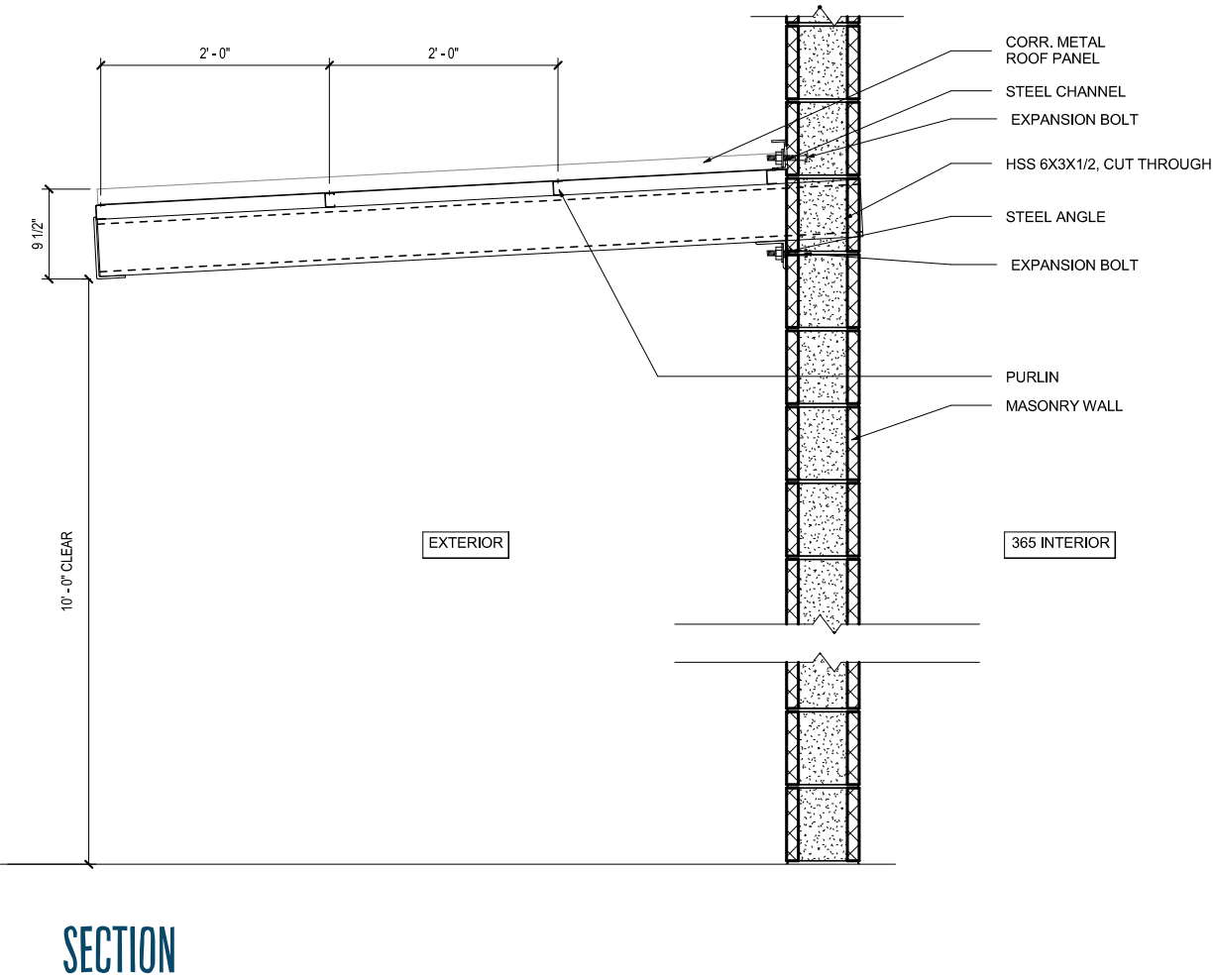
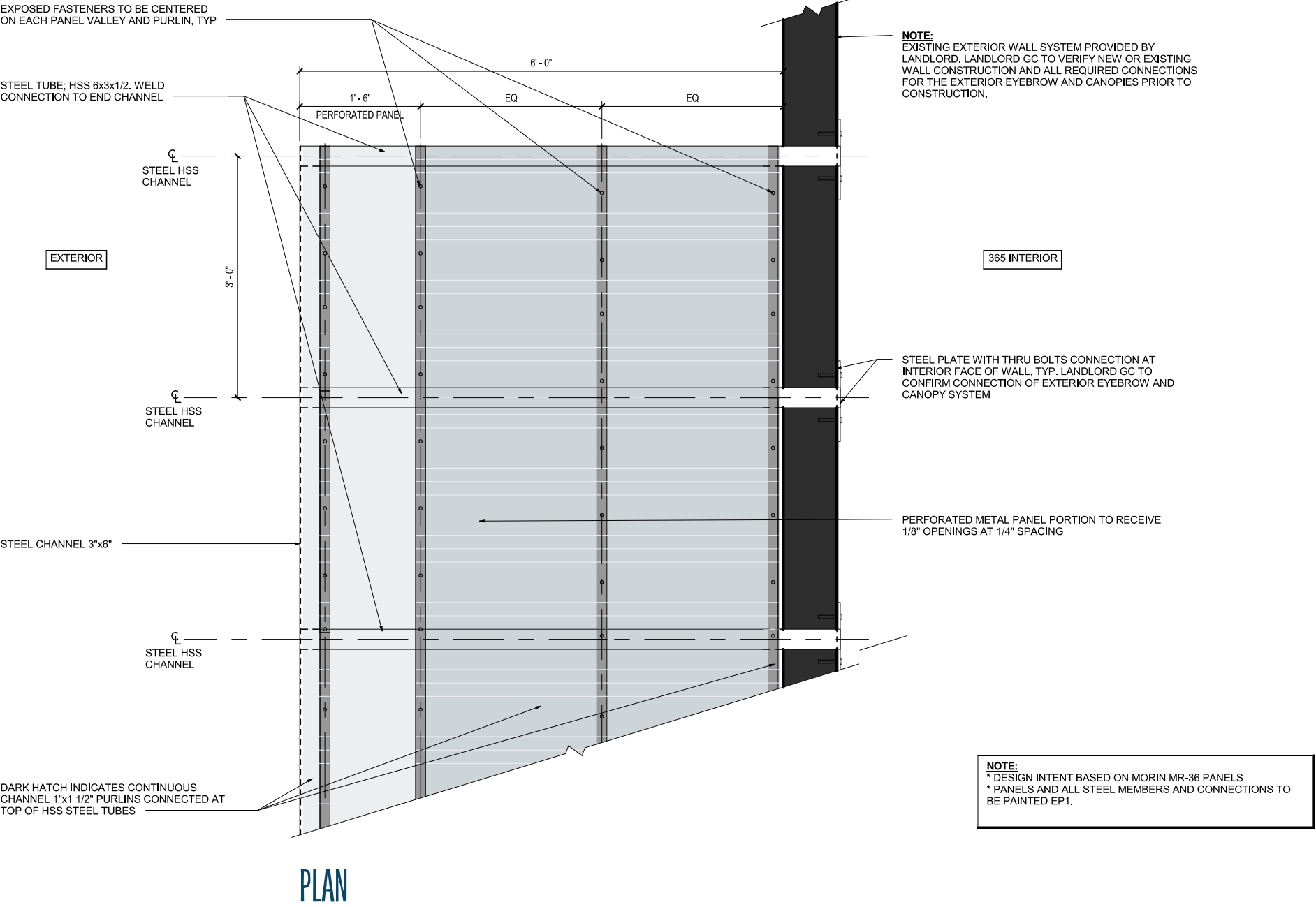
Product ID: ORN

Finishes: Galvanized Steel

Galvanized Finish



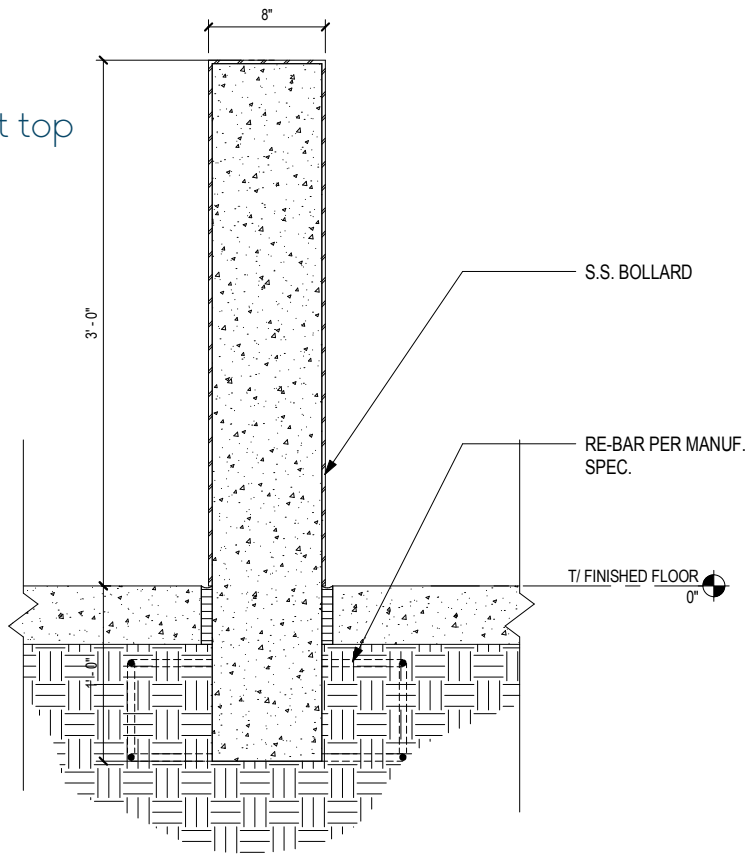
EYEBROW



SITE DETAILS

BOLLARD

Manufacturer: Calpipe
Product Name: Heavy Security Bollard with flat top
Product ID: SSF08080
Finishes: Stainless Steel



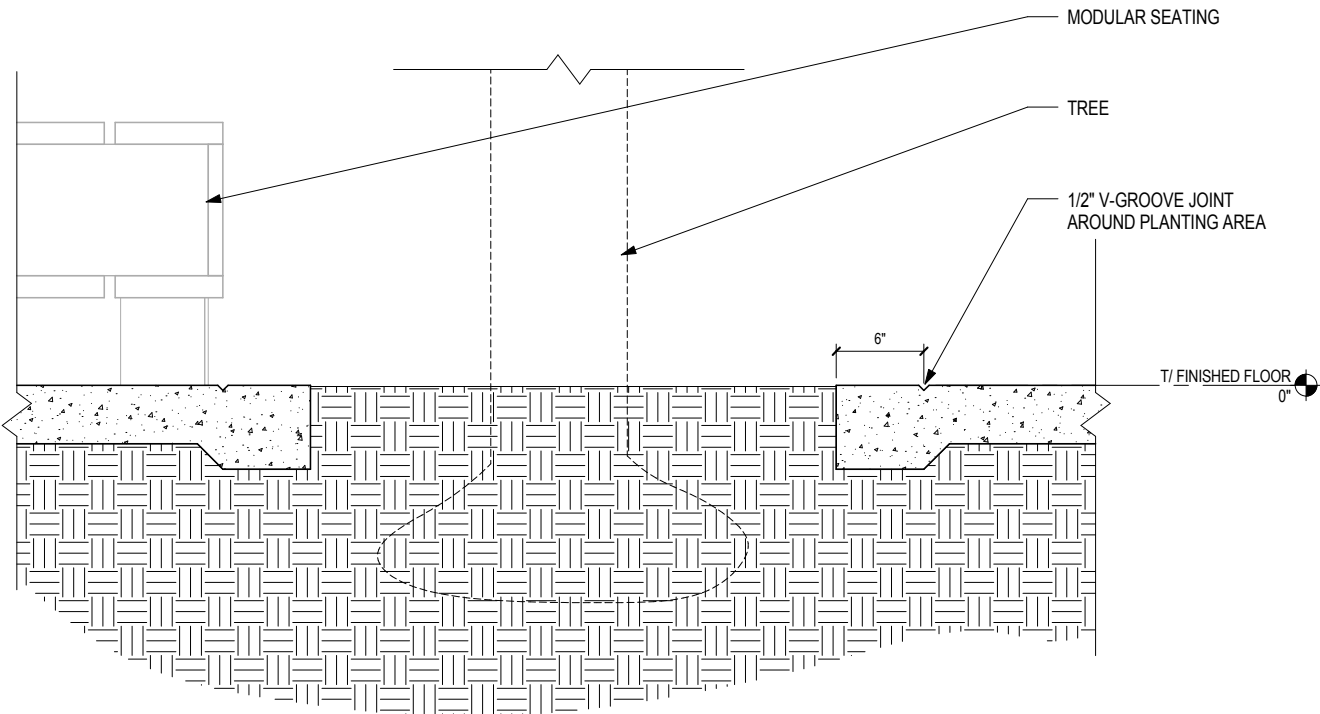
Typical Bollard Detail

TRASH COMPACTOR SCREEN WALL

Manufacturer: Morin
Product Name: X-16 Concealed Fastener Perforated metal panel;
10% open; 1/8" Hole, 3/8" Spacing
Product ID: X-16; MR-36 corrugation
Finishes: Aluminum with painted Dark blue custom color, PMS 2188



PLANTER DETAIL



LOW WALL DETAIL SECTION

