

# BEST BUY TEEN TECH CENTER

## HENNEPIN COUNTY LIBRARY

**PRESENTATION LAST UPDATED:** Jan. 8, 2013 - 02:53 PM

# BEST BUY® TEEN TECH CENTER

## WHAT IS A TEEN TECH CENTER?

### WHY IS BEST BUY DOING THIS?

Best Buy believes that access to technology provides access to opportunity. This is the cornerstone of the Community Relations Program.

The Teen Tech program will:

- Tell a long-term, focused, Best Buy philanthropic story
- Inspire and engage employees
- Align with our business strategy
- Maximize the value of current partners and programs
- Have measurable impact on teens.

Goal: To help teens explore their passions in technology and inspire future education and career choices.

### WHAT IS A TEEN TECH CENTER?

Best Buy believes a Teen Tech Center should be a space where access to technology promises to inspire creativity, promote inter-personal collaboration, build individual confidence and develop career opportunities.

It is a place to learn, experiment, collaborate and play with the latest technologies.

It is located in high teen traffic and safe locations within existing community sites such as libraries, museums, community centers or schools.

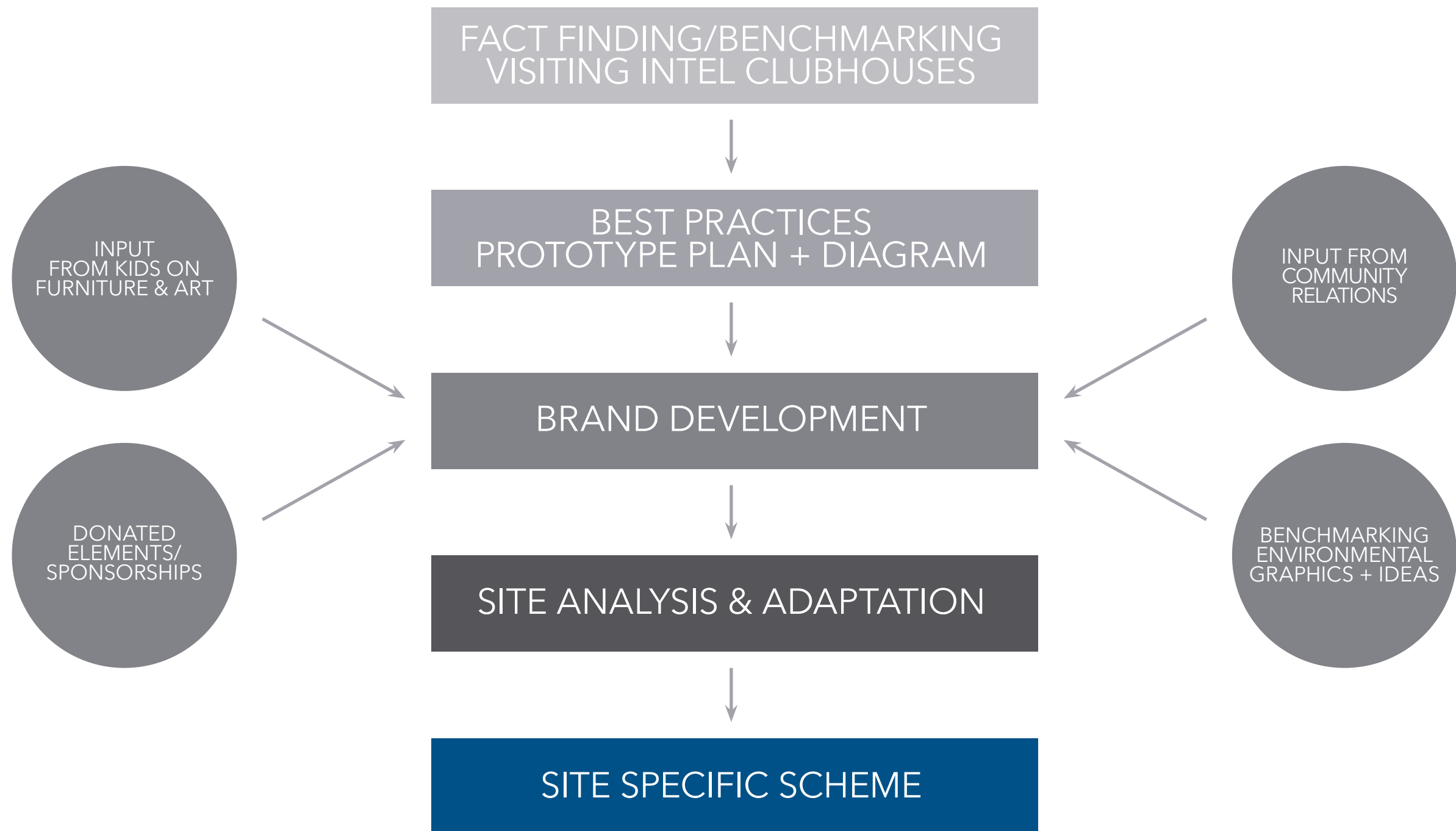
The program will provide:

- Digital Photography
- Filmmaking and videography
- Graphic Design
- Digital Music
- Robotics
- Gaming
- Computing

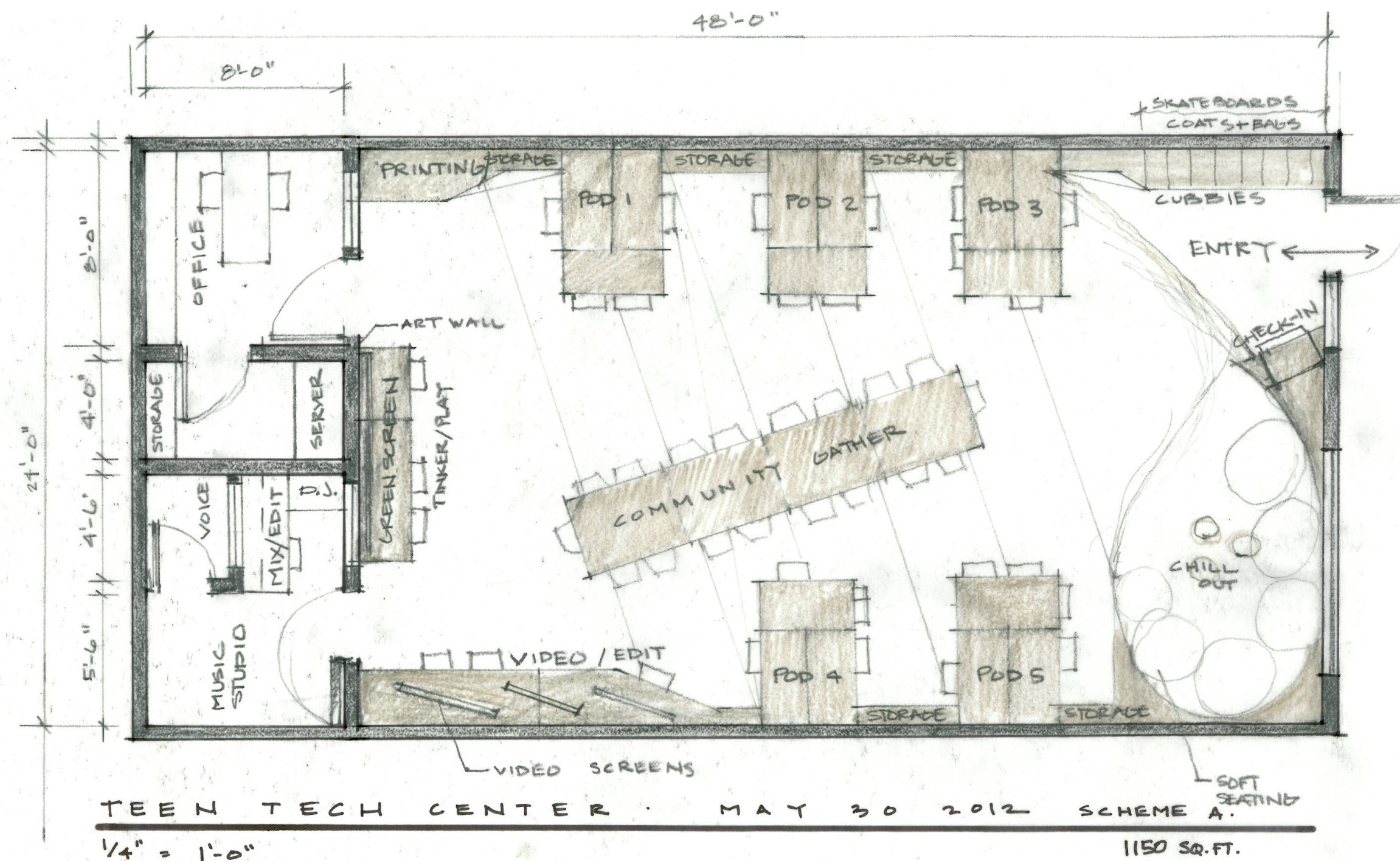
Each Best Buy Teen Tech Center should have a consistent look and feel that is fun, inviting and uniquely Best Buy.

# BEST BUY® TEEN TECH CENTER

## DESIGN PROCESS



# BEST BUY® TEEN TECH CENTER MINNEAPOLIS PROTOTYPE PLAN / OPERATIONAL DIAGRAM





# BEST BUY® TEEN TECH CENTER BACKGROUND & INSPIRATION





# BEST BUY® TEEN TECH CENTER

## LOGO LOCKUP + PALETTE

4CP



SPANISH 4CP



GRAYSCALE



1C REVERSE



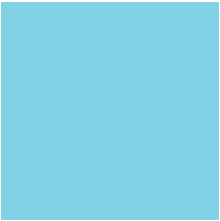
4C ON 2955



4C ON 636C



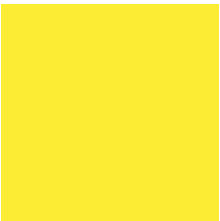
PRIMARY PALETTE



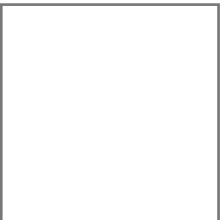
**PMS 636C**  
C: 41 M: 2 Y: 0 K: 0  
Benjamin Moore 787  
Grandma's Sweater



**Pantone® 2955**  
C: 100 M: 45 Y: 0 K: 37  
Benjamin Moore 2064-20  
Patriot Blue



**Pantone® Process Yellow**  
C: 0 M: 0 Y: 100 K: 0  
Benjamin Moore 336  
Bold Yellow



**White Paint**  
Benjamin Moore 2141-70  
Vanilla Milkshake

SECONDARY PALETTE



**PMS 549C**  
C: 40 M: 0 Y: 6 K: 28  
B. Moore 549 Sea Relections



**PMS 390C**  
C: 40 M: 1 Y: 93 K: 0  
B. Moore 2027-30 Eccentric Lime



**PMS 116C**  
C: 0 M: 10 Y: 100 K: 0  
B. Moore 321 Viking Yellow



**PMS 158C**  
C: 0 M: 10 Y: 100 K: 0  
B. Moore 2015-10 Electric Orange



**PMS 186C**  
C: 0 M: 100 Y: 81 K: 4  
B. Moore 2001-10 Ruby Red



**PMS Cool Gray 3C**  
C: 0 M: 0 Y: 0 K: 45  
B. Moore 1605 Winter Solstice

# BEST BUY® TEEN TECH CENTER **LOCKUP + ELEMENTS**

## HEXAGONS

The hexagon stems from the Teen Tech Center logo and can be used as a graphic element. When used independent of the lockup, they appear as a whole shape.



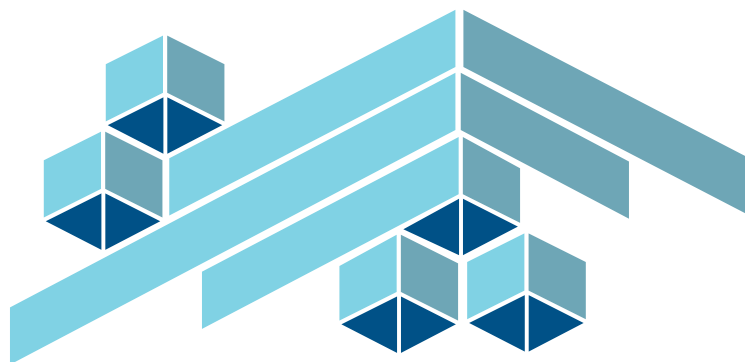
## STRIPES

The stripes are extensions of the Teen Tech Center logo. They can be used in creating materials but should always match the thickness of other stripes or hexagons in the composition.



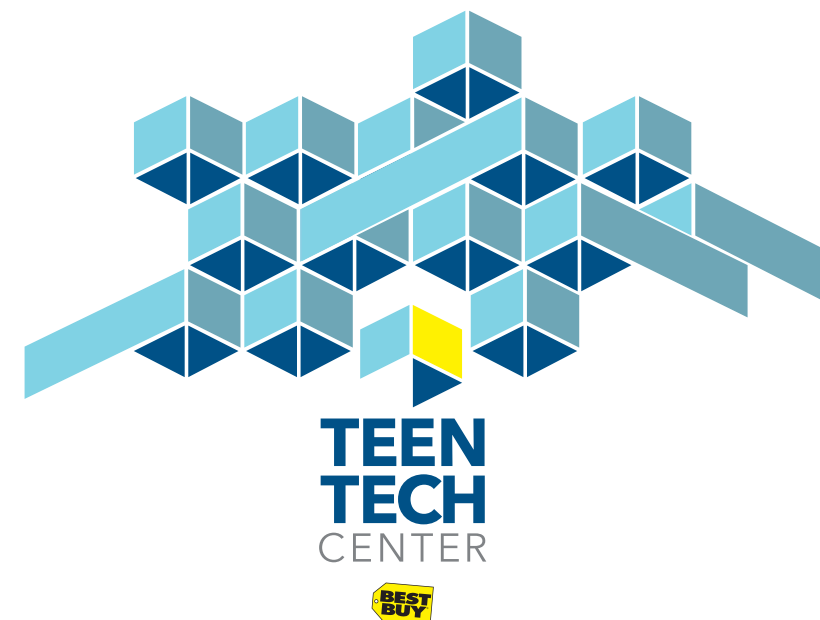
## HEXAGONS + STRIPES

One should strive to use the hexagons in concert with the stripe elements to create a unique composition. There are no solid guidelines surrounding this other than keeping the composition simple. See the example below and the included interior renderings to get a feel for using the two elements together.



## ELEMENTS + LOCKUP

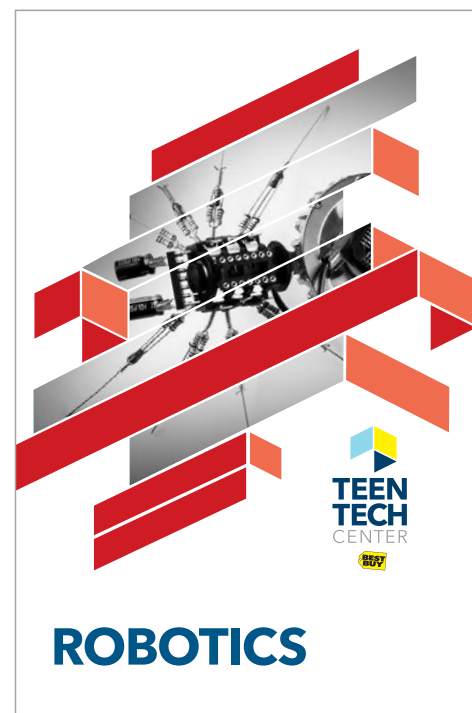
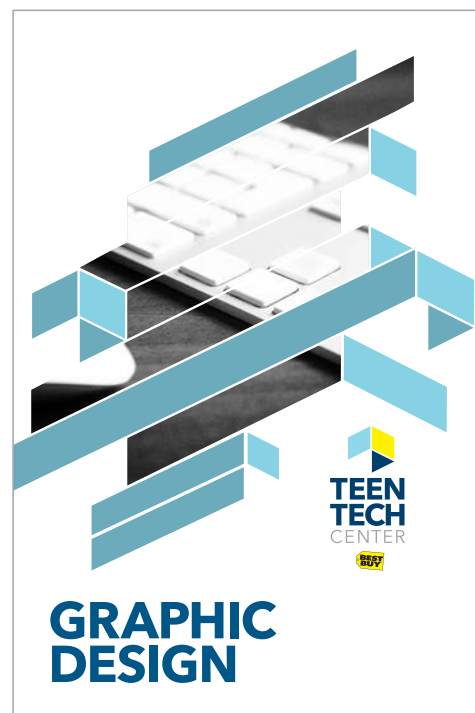
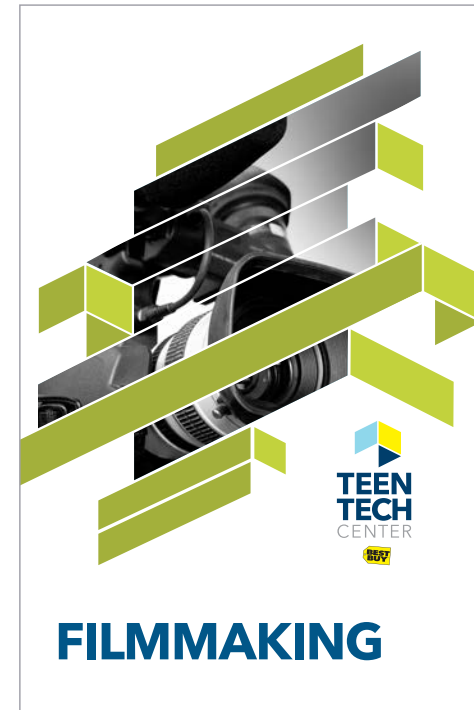
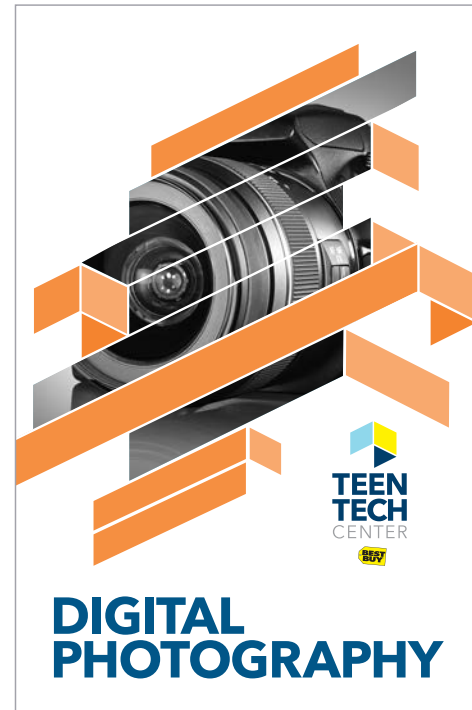
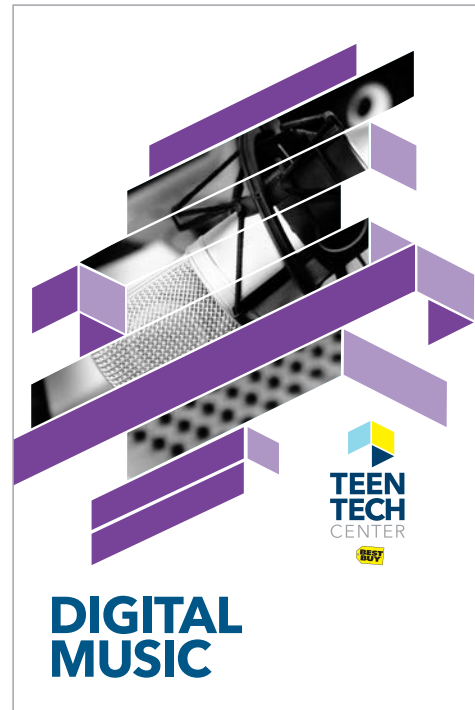
It's possible to use the lockup with the graphic elements surrounding it, so as to suggest the lockup is connecting into the composition. The elements may be separated from the lockup but use these guidelines as way to draw excitement to the lockup.



## NOTE ON COLOR:

When the graphic elements shown on this page are used on white, they should appear as they do here in terms of color. Once in a space, more of our secondary palette is used and the graphic elements appear in opaque white so as to not become overwhelming or busy, please refer to the renderings to see this in action.

# BEST BUY® TEEN TECH CENTER PRODUCT/DEPARTMENT PHOTOS





# BEST BUY® TEEN TECH CENTER

## DETAIL MAP



# BEST BUY® TEEN TECH CENTER

## WELCOME SIGN



# BEST BUY® TEEN TECH CENTER MINNEAPOLIS

## FURNITURE



Big Lounge in Flame and Ivory/Black fabric



Jenny Chair/No Arms in Red-Orange fabric



Ultra Plush Rug



Move Chair in Citron seat, Flash frame



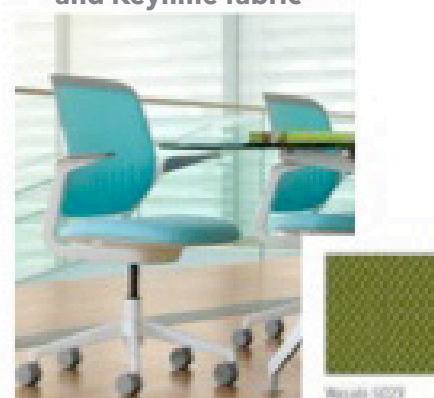
Alight Ottoman in Lime, Caribbean and Keylime fabric



Various Tables in Marble Micro finish



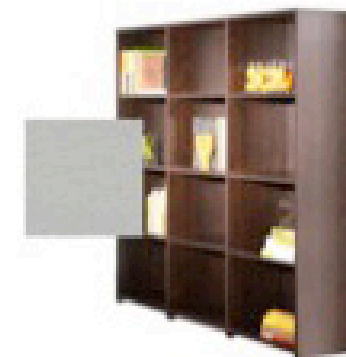
Fat Boy Bean Bag in Red and Dark Denim



Cobi Chair/No Arms in Wasabi fabric



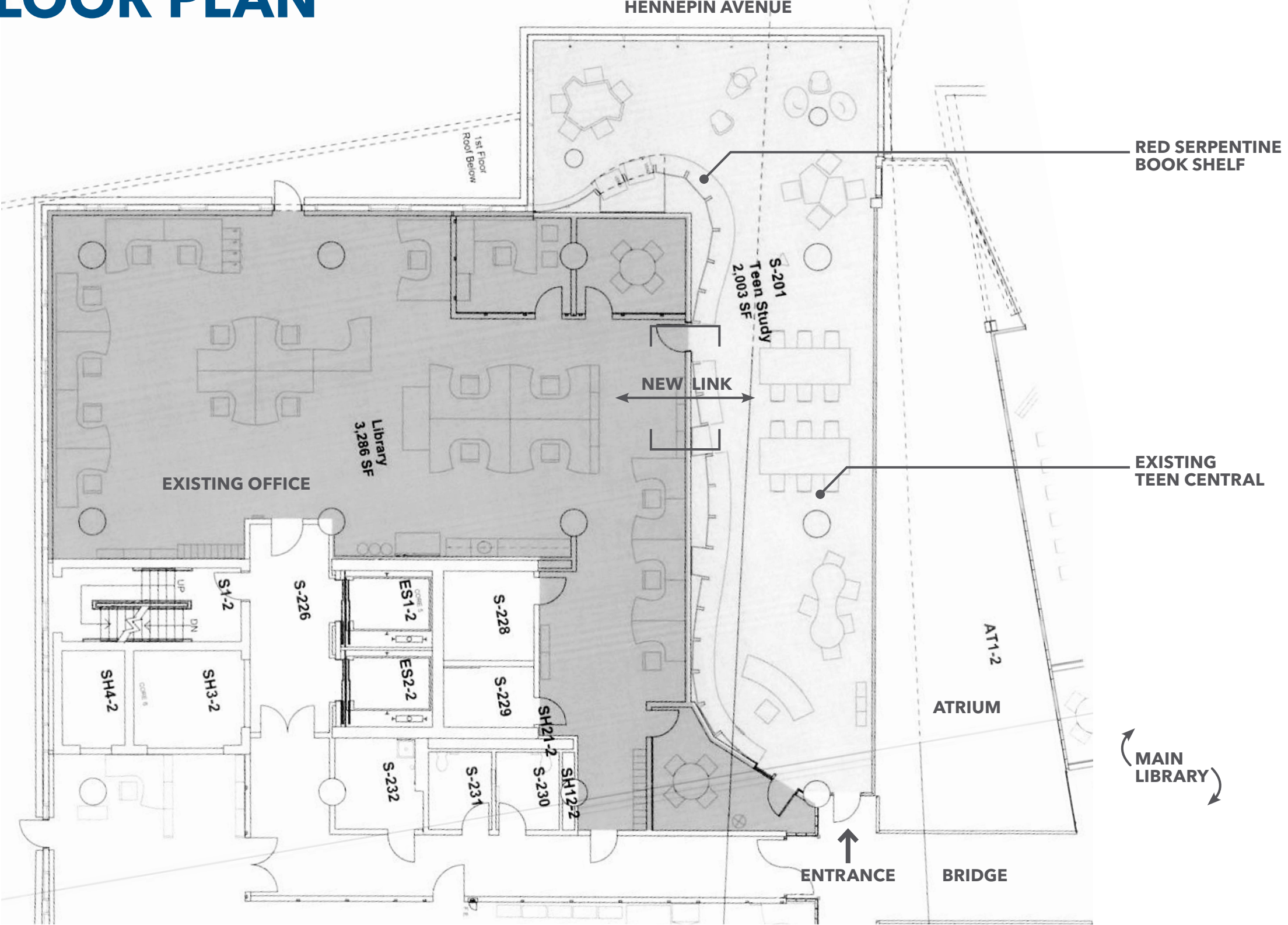
Campfire Personal Table



Workwall/Storage unit, two high; Brushed Silver finish

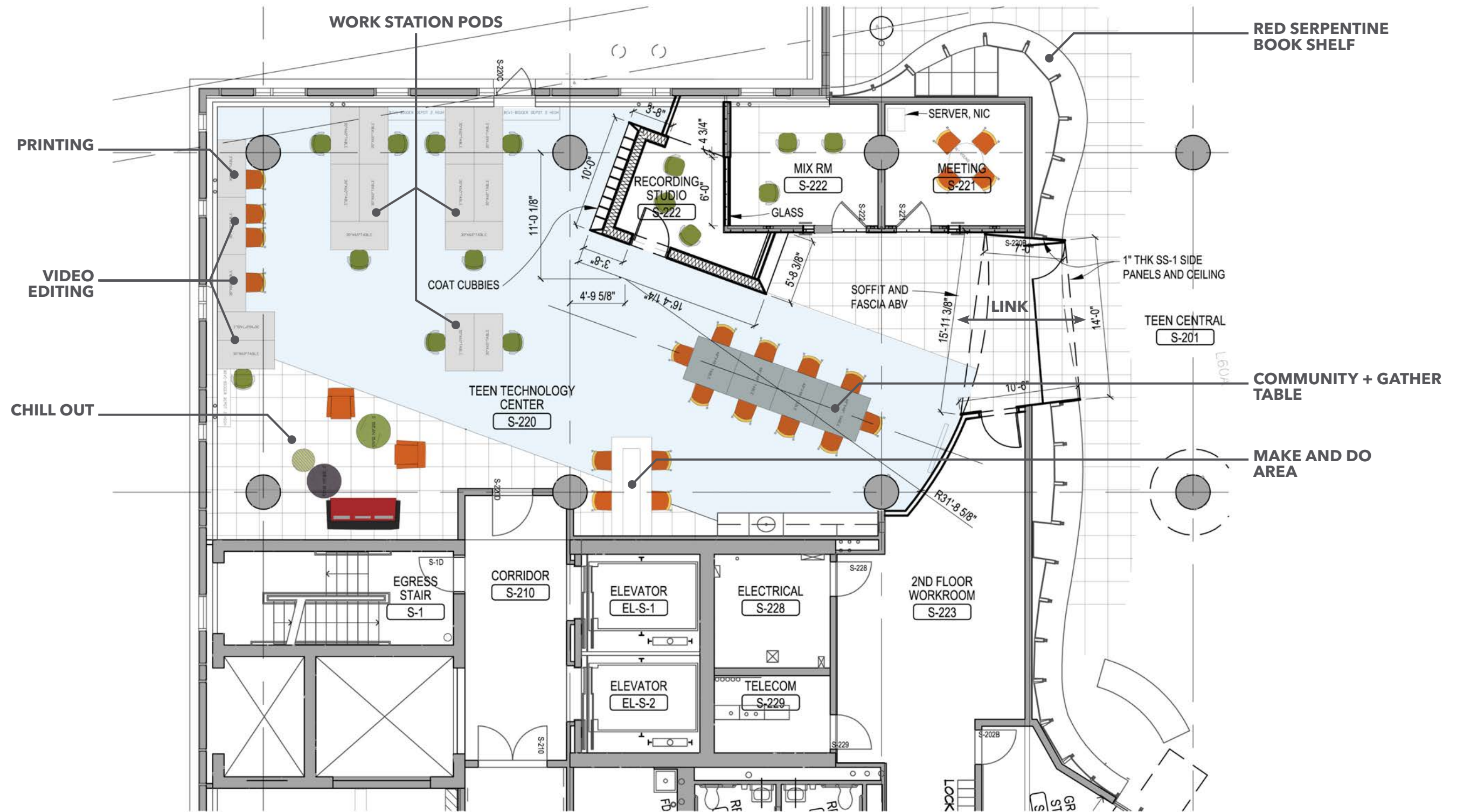
# BEST BUY® TEEN TECH CENTER MINNEAPOLIS

## EXISTING FLOOR PLAN





# BEST BUY® TEEN TECH CENTER MINNEAPOLIS **PROPOSED FLOOR PLAN**





BEST BUY® TEEN TECH CENTER MINNEAPOLIS  
**AXONOMETRIC** VIEW 1





BEST BUY® TEEN TECH CENTER MINNEAPOLIS  
**AXONOMETRIC** VIEW 2





# BEST BUY® TEEN TECH CENTER MINNEAPOLIS BRIDGE

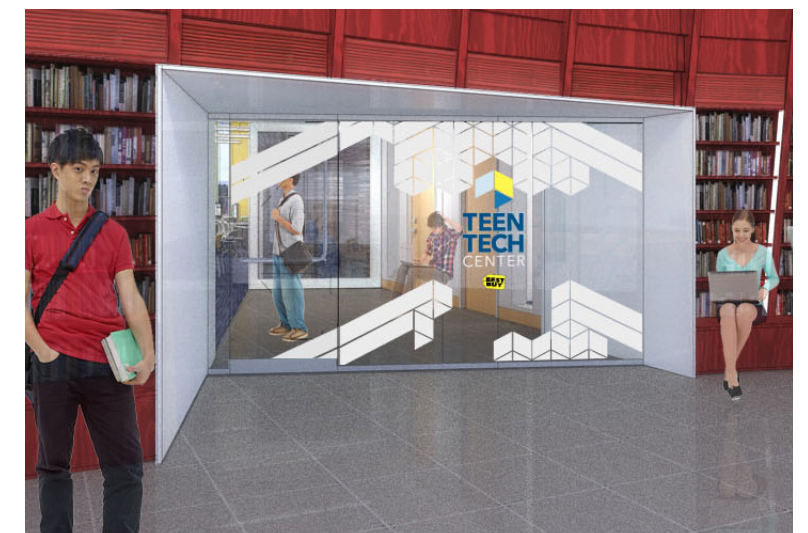


**WHITE  
SOLID/OPAQUE**

**ELEVATION**



**SHOWN IN SPACE**



**ENTRANCE (TEEN CENTRAL AND TEEN TECH CENTER)**



# BEST BUY® TEEN TECH CENTER MINNEAPOLIS **ENTRANCE**



Hennepin County Public Library Location



# BEST BUY® TEEN TECH CENTER MINNEAPOLIS

## INTERIOR VIEW 2



- Red wall already exists within the space
- Sound booth is skinned in BBY Blue

- Citrus and lime panels with opaque white graphic elements



# BEST BUY® TEEN TECH CENTER MINNEAPOLIS

## INTERIOR VIEW 3 (SHOWING MAP)



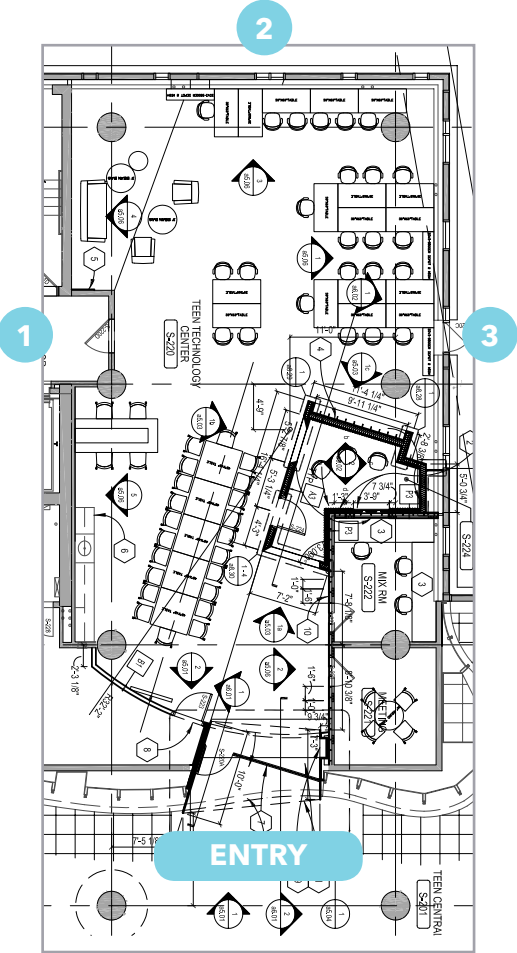
- Red wall already exists within the space
- Sound booth is skinned in BBY Blue

- Citrus and lime panels with opaque white graphic elements
- World map (work in progress) mounted on concrete focal wall

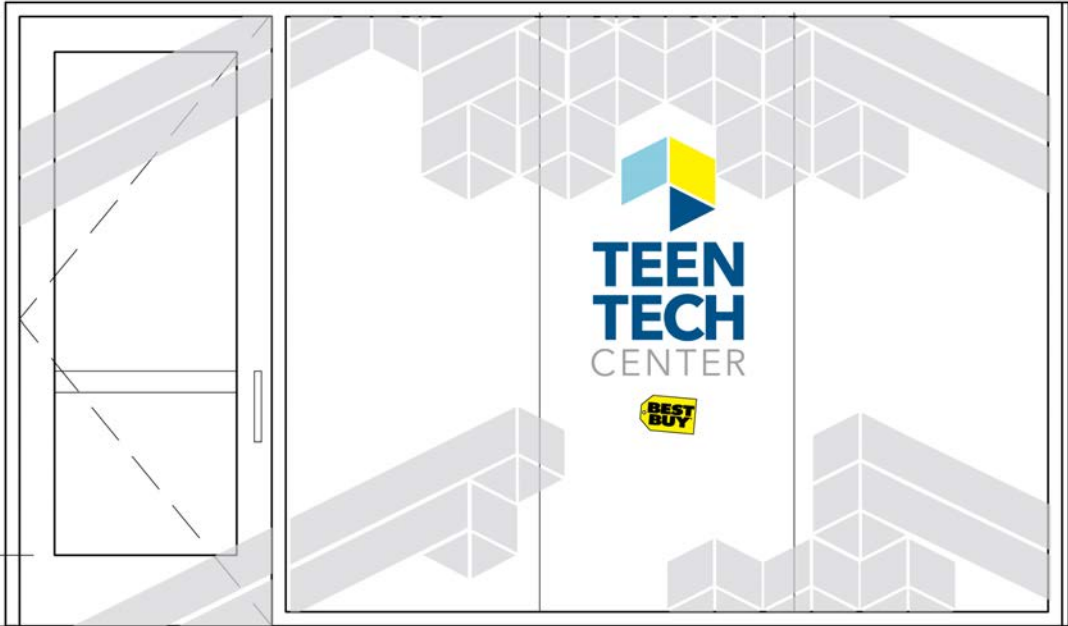


# BEST BUY® TEEN TECH CENTER MINNEAPOLIS

## ENTRANCE



FLOORPLAN



ELEVATION



UNDER CONSTRUCTION

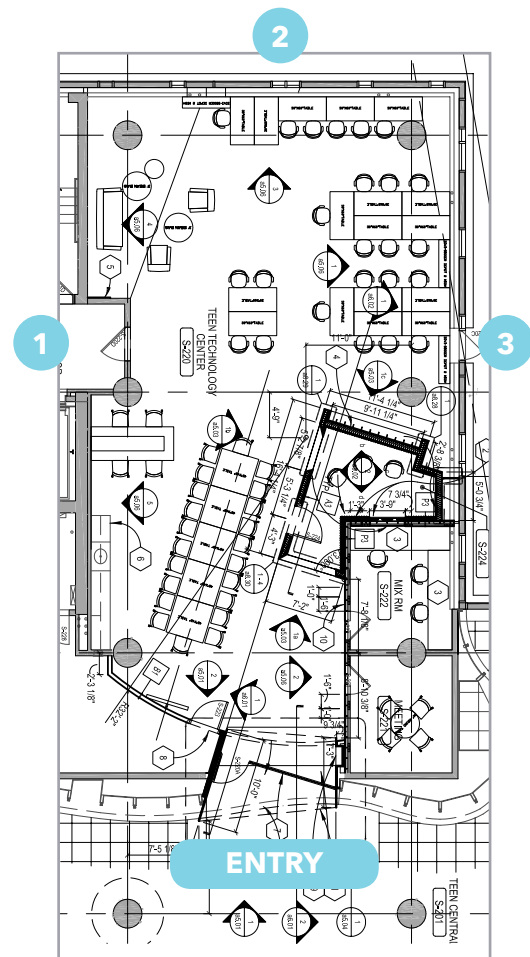


PHOTOS OF SPACE

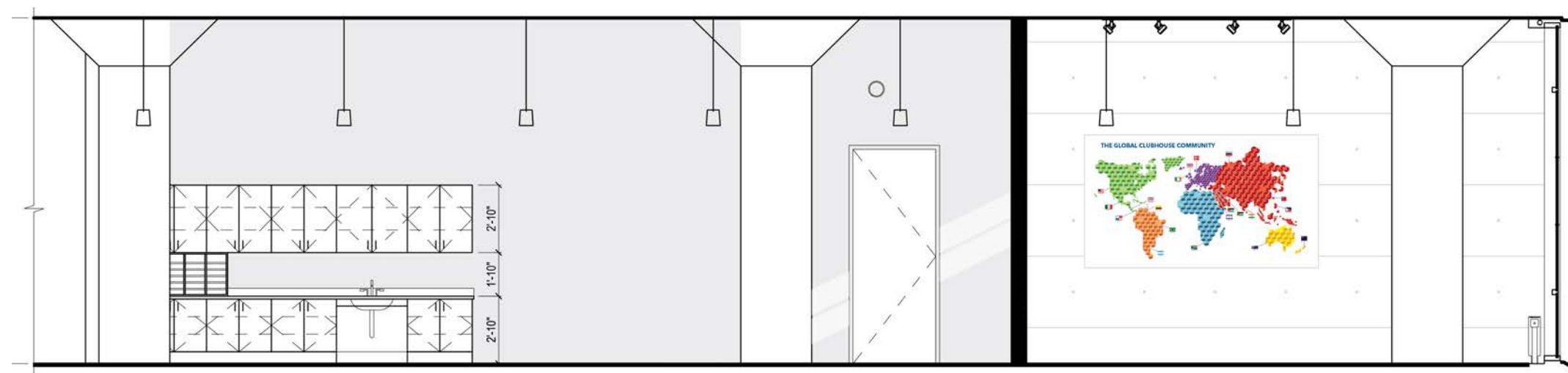


# BEST BUY® TEEN TECH CENTER MINNEAPOLIS

## WALL 01



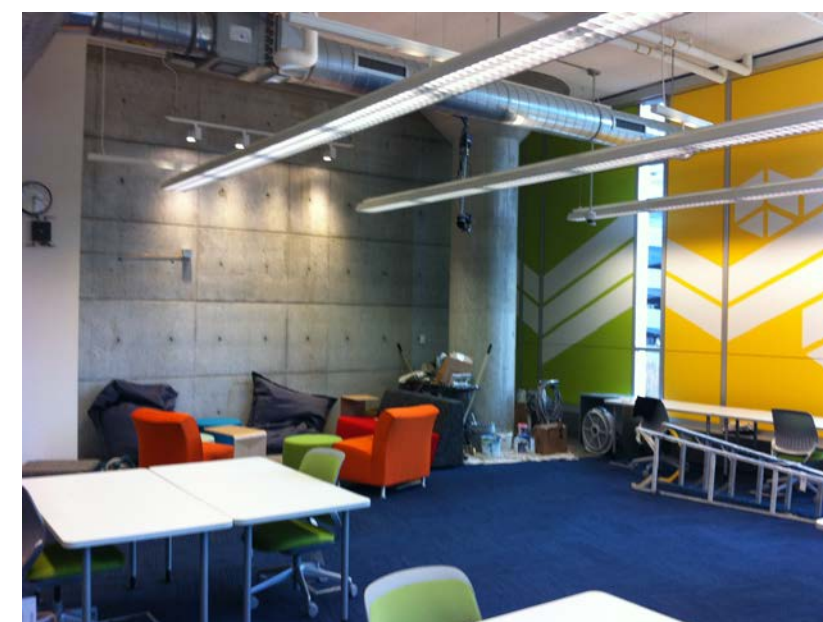
FLOORPLAN



ELEVATION

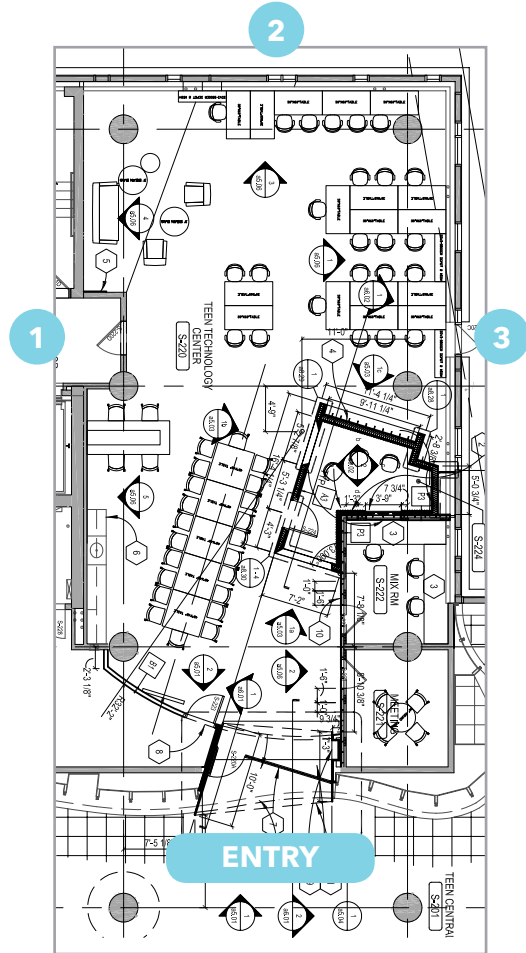


UNDER CONSTRUCTION

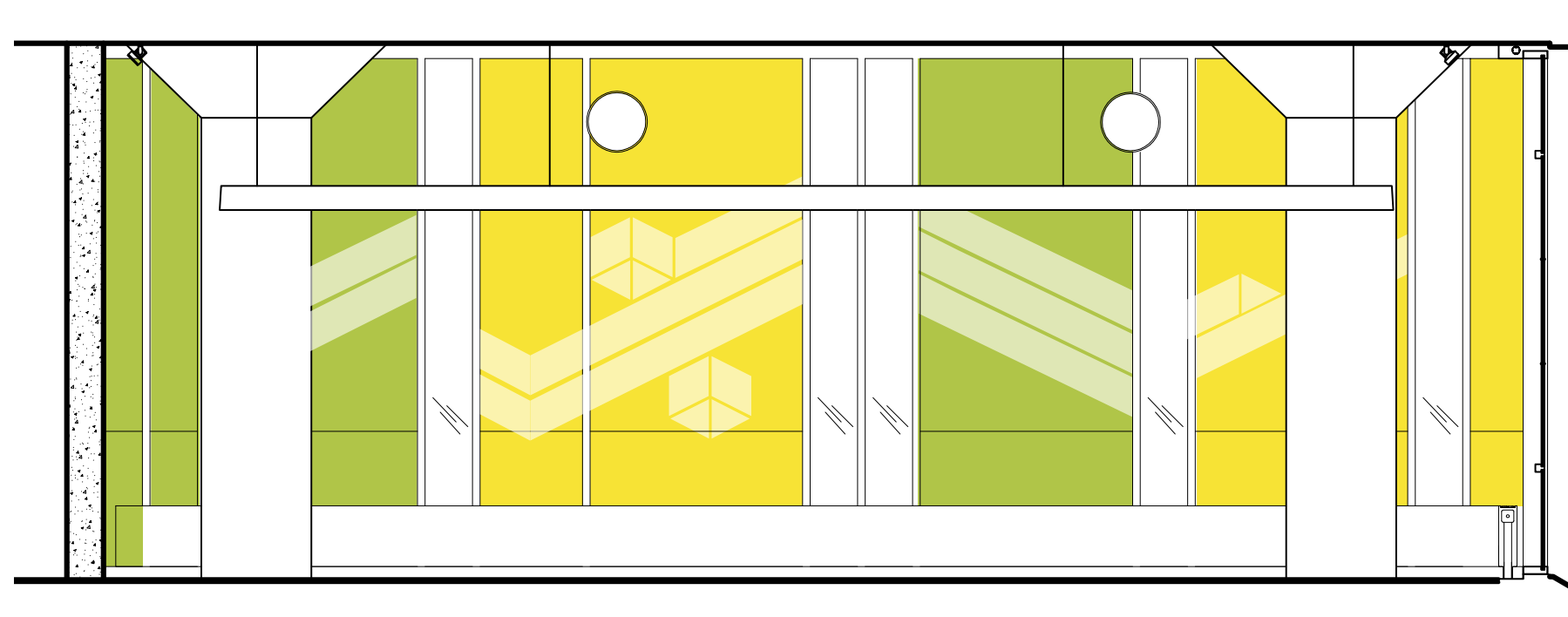


# BEST BUY® TEEN TECH CENTER MINNEAPOLIS

## WALL 02



FLOORPLAN



ELEVATION

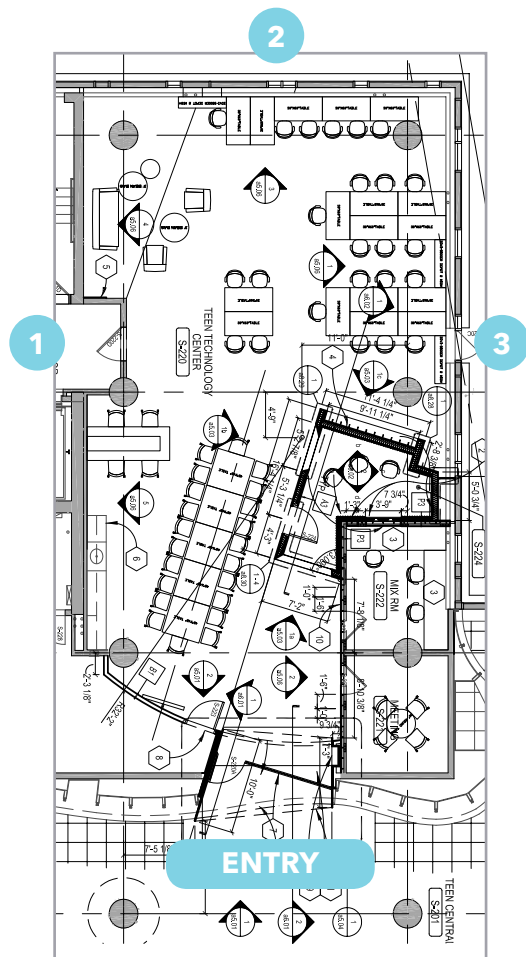


UNDER CONSTRUCTION

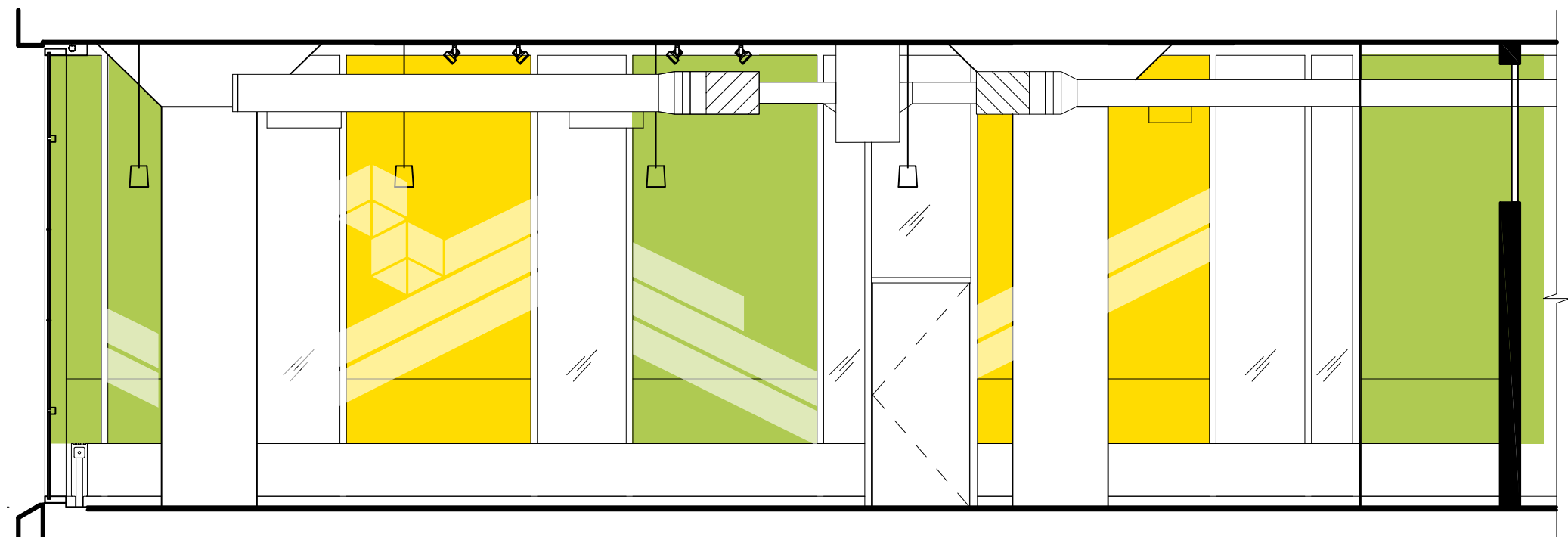


# BEST BUY® TEEN TECH CENTER MINNEAPOLIS

## WALL 03



FLOORPLAN



ELEVATION



UNDER CONSTRUCTION



# BEST BUY® TEEN TECH CENTER PHOTOS





# BEST BUY® TEEN TECH CENTER PHOTOS





# BEST BUY® TEEN TECH CENTER PHOTOS





# BEST BUY® TEEN TECH CENTER PHOTOS

