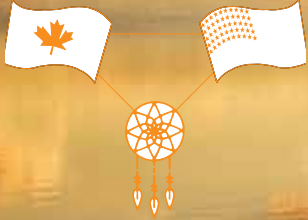


best kept secrets

WAY DOWNEAST MAINE

Saint Croix Valley



FREE

St Croix Valley Chamber of Commerce



International Commerce

A crossroads to grow your business

With a bustling border on the St. Croix River, Calais offers a unique opportunity for your business to build an international client base.

Whether you own an established business looking to expand its offering, or you're just breaking into an international market, the city of Calais offers the location and support to grow your business.

Quick Facts

- Over one million cars carrying 1.5 million people cross the Calais border every year
- The Calais port of entry is the eighth busiest Canada/U.S. border
- Border crossing open 24 hours a day, 7 days a week

Bridging Culture and Community

We invite you to live, work and play in Calais

Rich with stunning architectural treasures, overlooking a rugged and beautiful coastline, Calais has a remarkable endowment of historical buildings, natural beauty and a friendly, welcoming community.

Calais now has fiber-optic high speed internet. The advantage of high speed internet is the ability to work from home. The small town feel with global connections.

For the outdoor enthusiast, Calais is surrounded by a wealth of natural wonders including: lakes, streams, hiking trails -- perfect for fishing, hiking, paddling, biking and exploring.

Quick Facts

- Settled in 1779, incorporated as a city in 1850
- Population of 3,123; 1400 households
- Mayor/Council form of government

Education

- Calais is home to an elementary, middle and high school, as well as regional technical school and community college

Development Office:
11 Church Street, Calais, ME 04619
T: + 1 207.454.2521

Open 8am - 5pm EST, Mon-Fri

www.calaismaine.org

Calais ▪ Baring ▪ Baileyville ▪ Princeton
 Indian Township ▪ Pembroke ▪ Dennysville
 Grand Lake Stream ▪ Vanceboro ▪ Perry
 Robbinston ▪ Eastport ▪ Pleasant Point
 Charlotte ▪ Machias ▪ Cooper ▪ Marion
 Crawford ▪ Waite ▪ Alexander ▪ Cathance
 Meddybemps ▪ Jonesport ▪ East Machias
 Jonesboro ▪ Lubec ▪ Whiting ▪ Trescott
 Addison ▪ Columbia Falls
 Harrington ▪ Cutler ▪ Beals ▪ Northfield
 Whitneyville ▪ Wesley ▪ Brookton ▪ Cherryfield
 Columbia ▪ Danforth ▪ Deblois ▪ Milbridge
 Machiasport ▪ Marshfield ▪ Beddington
 Roque Bluffs ▪ Steuben ▪ Talmadge
 Topsyfield ▪ Codyville ▪ St. Stephen
 Milltown ▪ St. Andrews
 Campobello - New Brunswick, Canada

St. Croix Valley Chamber of Commerce
 39 Union St., Calais, ME 04619
 207-454-2308
 visitstcroixvalley.com
 email: visitstcroixvalley@gmail.com

Contributing Writers/Organizations:
 Kaileigh Deacon
 Georgina Kendall
 Kara Mitchell
 Jim Thompson
 St Croix Historical Society
 St Croix Valley Chamber of Commerce
 DeeDee Travis

Photography:
 Brewer Andrews
 Carrie Cropley
 Amie Flowers
 Julie Keyes
 Kara Mitchell
 Mark Roussel
 Emily Ruttan
 DeeDee Travis
 Sandi Wheaton

Cover Photos:
 St Croix Valley Chamber of Commerce

If you are interested in advertising for the
 2025 season, please email
 visitstcroixvalley@gmail.com

Printed in Canada 2024



What to Do

- 4 Ongoing
- 8 Events & Festivals
- 22 Summer Camps
- 29 Fishing & Hunting
- 38 Camping & Paddling
- 44 Maine State Star Party

The Trails

- 34 Hiking
- 23 Orange River Water Trail
- 41 Camp the International Waterways
- 42 Motorized & Biking Fun
Snowmobile ATV Bike & Motorcycle

Art/Museums/Education

- 12 Alexander Art Trail
- 14 Art Gallery - Dennysville
- 33 Native American Culture
Down East

Small Town Living

- 4 Farmers Markets
- 4 Life Along the Border
- 6 Calais
- 11 Grand Lake Stream
- 13 Baring, Alexander, Baileyville & Princeton
- 15 Pembroke & Dennysville
- 17 Robbinston
- 18 Machias & Roque Bluffs
- 19 Machiasport, Jonesboro & Jonesport
- 20 Lubec & Cutler
- 21 Campobello
- 24 Eastport & Perry
- 26 Romanticizing Rhubarb
- 27 International Festival
- 41 Getting Around
- 45 Business Directory

Some Best Kept Secrets

- 30 A Hidden Calais Treasure
- 31 Princeton Maine Prisoner of War Camp
- 32 Passamaquoddy Chief Joseph Nicholas and the Indian Motorcycle

What to do ONGOING

CHOCOLATE MUSEUM

Hands-on exhibits, vintage chocolate boxes. Open year round, 73 Milltown Boulevard, N. Canada. Admission fee. 506-466-7848. www.chocolatemuseum.ca

SEASONAL FARMERS MARKETS

See listing in side bar.

THE HUNTSMAN FUNDY DISCOVER AQUARIUM

Mid May to Mid October. Open 10 to 5 daily; St Andrews, NB 506-529-1200; www.huntsmanmarine.ca

MCCURDY SMOKEHOUSE MUSEUM & ART GALLERY

June 1 opening, Lubec ME: Tours daily 11-4. Adjacent McCurdy Art Gallery: local artisans, photographers, crafters & painters. Admission FREE. www.lubeclandmarks.org

MUSIC ON THE GREEN

June to September, 6:30 pm, Tuesdays, downtown at Flat Iron Park. Weekly concert series. Admission FREE. See the facebook page for a schedule of performers.

PASSAMAQUODDY CULTURAL HERITAGE MUSEUM

Open Mon-Fri, 10-3. See artifacts of the Passamaquoddy, birch bark baskets, woven baskets, beadwork, and much more. 197 Rt 1, Princeton, ME 207-796-5533.

ST CROIX COUNTRY CLUB & GOLF COURSE

Nine hole golf course, pro shop, full service bar, lounge and grill, youth clinics (free), and lessons. Right on the St Croix River, Rt 1, Calais, ME. Open seasonally. 207-454-8875.

www.stcroixcountryclub.com

ST CROIX HISTORICAL SOCIETY

Main St, Calais, ME. Offering literature and public meetings. Open during the summer months or by appointment for tours. Admission FREE

ST CROIX INTERNATIONAL PARK

International historic site with sculptures, tours, exhibits, book sales, youth programs, restrooms, picnic areas and rudimentary boat launch. Rt 1, Calais, ME 207-288-3338.

www.nps.gov/sacr

SUMMER MUSICAL CONCERT SERIES

St Stephen NB David Alison Ganong Chocolate Park. Local talent for free public concerts every Thursday night through summer months. Admission FREE.

Farmers Markets

Calais Triangle Park, Calais; Tuesdays, 12 pm - 2 pm Beginning June 18

C&E Feeds 482 North Stree, Calais; Open daily 8 am-5pm. We work closely with Washington County farmers and artisans to provide you with the best Maine made products. Our community market boasts the largest selection of local produce and meats in Calais.

Eastport Saturdays, 11am-1pm in the Port Authority Parking Lot

Lubec: "the Easternmost market in the U.S.A." every Saturday, June - Oct; 10 am - noon; Lubec Community Outreach Center, 44 South St, Lubec

Machias Valley starting date Friday, May 19; perennial plants, seafood, a food truck, wild blueberries, mixed produce; eventually the market will be Fridays, Saturdays and Sundays; hours 9 am - 2 pm

Milbridge 29 Main St (Camden National Bank parking lot on Route 1) 04658 • every Saturday 9 am - 12 pm

Franklin open Late July - early October, every Saturday, 9 am - 1 pm, 33 Blackwood Road (Rt. 182)

So I go North to get Way Down East? That Seems Odd!

The term "Down East" or "Downeast" is most often defined in Maine as the eastern coastal region of the State in Washington and Hancock Counties. Way Down East would then refer to the northern most section of this area. The description leaves many visitors scratching their heads trying to figure out why the most northeastern area of the United States is referred to as Down East.

The origin of the phrase "Down East" is typically traced to nautical terminology referring to direction, rather than location. In the warm months most suitable for sailing, the prevailing winds along the coast of New England and Canada blow from the southwest, meaning ships sail downwind to go east. As such, the northeastern stretches were said to be "Down East" in relation to major western cities such as Boston. Correspondingly, sailors spoke of going "up to Boston" from Down East ports, a phrase still common in Maine, despite the fact that Boston is around fifty miles to the south of Maine. The term can be used as an adverb, adjective, or noun. The Oxford English Dictionary traces the earliest known use in print to 1825. The phrase "down-easter", meaning a person from "Down East", appeared in print in 1828.

Life Along The Border *by Jim Thompson*

Europeans set foot in the Valley in 1604, when a group of European traders led by Samuel Champlain built a settlement on St. Croix Island, a few miles downriver from Calais. The group suffered severely from scurvy and nearly half of the 70 or so expedition members died before the group pulled up stakes and moved across the Bay of Fundy. The Champlain expedition is memorialized at the St. Croix Island International Historic Site, on US Route 1 adjacent to the island. (See more info on pg 6)

It wasn't until the American Revolution that significant European settlement began in the region. Several coastal New Brunswick towns were founded by families fleeing Revolutionary bias against English loyalists. Similarly, Calais grew after the Revolution as a ship-building and manufacturing center.

Today, Calais, Maine, and St. Stephen, New Brunswick, together are the center of a market area that includes about 20,000 people. Despite being in different countries, the communities are closely tied by social, economic and cultural relationships. Many families, for example, include members living on both sides of the border. The St. Croix River often is regarded as an element that joins communities rather than separates them.

With its "gateway to Canada" location, St. Stephen is located on the tidal St. Croix River, a Canadian heritage river that serves as the narrow international boundary between Canada and the United States, and is part of the historic resort area of the world renowned Bay of Fundy. Canada's "Chocolate Town" has a blend of small and large parks, riverfront walk trail, modern multi-purpose recreational facility, historical buildings, unique downtown boutiques and eateries, park with splash pad for the kids, and the Chocolate Museum. With beauty everywhere, watch 25 foot tides (the highest in the world, change twice daily), watch eagles and osprey fish along the river. Visit Dover Hill Park with trails & a view of the International Bridge, take a walk along

continued on page 16



CALAIS

Calais Riverfront Walkway travel along the International Saint Croix River, separating Calais, Maine and New Brunswick, Canada. The 1.5-mile rail-trail marks the first mile of the East Coast Greenway, a project envisioned as a 3,000-mile off-road trail for non-motorized transportation, stretching from Calais to Key West, Florida; this section has many highlights, view some of the river's rapids; a special section located in front of the Wabanaki Cultural Museum has been dedicated to Ken Berry by the city, for his hard work and dedication to the trail; the section is lined with rose bushes and gives a close view of the old working waterfront from the past, and often views of bald eagles resting www.greenway.org/states/maine



Calais Skatepark All are welcome - skateboards, bmx, rollerblades and scooters. Open dawn til dusk. Use at own risk - helmets recommended. Proudly built and maintained by volunteers. FMI visit: <https://www.brendanleddymemorialfund.org>



Downtown Mural by national award-winning artist Amy Bartlett Wright is courtesy of a grant received by the local food pantry from the George G Wright Endowment for the Humanities Fund. The mural includes a 30' rendition of the famous local steamship, the Rose Standish.

St Croix International Historical Society was formed to preserve, protect, and promote the history of the St. Croix Valley, through literature, public meetings, participation and preservation. The Society publishes a quarterly newsletter, sells books and cards, has a large collection of photos and an extensive research library. The Society owns and maintains the Whitlock Mills Lighthouse, the Holmes Cottage and the Holmestead on Main Street, Calais. These buildings contain our artifacts collection. FMI: <https://stcroixhistorical.com/>

Calais Free Library 9 Union St., Calais • computer access • free wifi • summer programs • the 2nd floor children's section • book sales www.calaisfreelibrary.com

Thomas DiCenzo Athletic Complex 54 Calais Ave, Calais; two baseball diamonds, batting cages, tennis courts, basketball court, public playground, skatepark and Howard Fox Memorial Pool (public pool). The entire compound is located in one large squared off section.

State Cinema 239 Main St, Calais; watch a movie; visit www.statecinemascalais.com for a full movie listing or call (207) 454-8830

St Croix Country Club & Golf Course US Rte 1, Calais; nine hole golf course; pro shop; full service bar; FREE youth clinics; lounge and grill; directly on St. Croix River, seasonal; FMI call (207) 454-8875 or visit www.stcroixcountryclub.com

Whitlock's Mill Lighthouse Located on the south side of St. Croix River, Calais. The lighthouse and grounds are not open to the public, but can be viewed from the St. Croix River rest area on Route 1 or be seen from the river. The lighthouse was named after Colin Whitlock, who tended the lantern before the lighthouse was built. Its location makes it the northernmost lighthouse in New England; stcroixhistorical.com/?page_id=28

Wabanaki Culture Center 39 Union St., Calais; Monday - Friday 8am - 4pm, marine touch tank, exhibitions featuring the history of St. Croix Valley and shipbuilding, Wabanaki baskets, beadwork and artwork; FMI call (207) 454-7878

WCCC Disc Golf Located in the middle of WCCC's campus is a 9 hole disc golf course available to the public. Course has par 3s and 4s to practice long and short distance game. Rental equipment available, including drivers, mid range discs, and putters. This course is usually open all year-round. visit wccc.me.edu/oac or call (207) 454-1060

www.theinternationalmotel.com

Free WiFi • Pet-Friendly
Clean • Comfortable

Walking distance to Dining,
Shopping, Hiking trails

1 (800) 336-7515

THE INTERNATIONAL MOTEL
626 Main Street
Calais, Maine 04619
207-454-7515
1-800-336-7515

Keenes Lake Family Campground 70 Keenes Lake Rd., Calais; (207)454-2022; open early May to late October, swim for the day, play volleyball on the beach, rent a SUP or paddleboat, offers a variety of camp sites, dog friendly, small store, offers ice, drinks, pizza, souvenirs, propane is available to fill up your tanks before you hit the road; FMI visit keeneslakecampground.com

Holmes Cottage & Museum 527 Main St., Calais • The museum is open during the summer months or by appointment • monthly presentations are given on the first Monday of the month. <http://stcroixhistorical.com>

Calais Memorial Park Located on Main St, Calais, ME 04619; a playground for younger kids, featuring Civil War monument; picnic area and gazebo; FMI visit: www.maine.gov/civilwar/monuments/calais.html

C & E FEEDS
FRESHLY HARVESTED
CALAIS FARMERS MARKET
EST. 1982

482 North St, Calais, ME 04619
(207) 454-3666

Mon - Sat 8 am - 5 pm
Sundays - 8 am until noon

Blue Seal Feeds
Fresh Baked Goods
Gardening Supplies & Gifts
Farm Fresh Produce & Whole Foods

Family owned and operated since 1982

What *to do* EVENTS & FESTIVALS

JANUARY

Sardine & Maple Leaf Drop New Year's Eve celebration; music, kids crafts in Bank Square, downtown Eastport, ME; from the third story of the Tides Institute & Museum of Art; FMI visit <https://www.tidesinstitute.org/new-years-eve/>

FEBRUARY

Hearts for the Arts; An auction of heart themed artwork by local artists to benefit the Eastport ArtWalk Weekends. Reception held first weekend of February; FMI www.eastportartwalk.com

MARCH

WCCC Annual Polar Dip is held yearly, often around the first Friday in March – the event fundraises for the Ronald McDonald House and Sarah's House of Maine. FMI see the WCCC website www.wccc.me/edu

Maine Maple Sunday Weekend is held the fourth Sunday in March. Sugarhouses across the State open to the public and hold a variety of activities. Duvall Maple Lane Sugary in Robbinston occasionally takes part, but search out the web to see if others in the area have festivities planned.

APRIL

Annual Smelt Fry Columbia Falls each year in April as a Spring tradition celebrating migratory fish, with a particular focus on smelts; activities throughout downtown Columbia Falls, art displays, Union Hall, Downeast Salmon Federation booths; local foods featured with smelts, alewives, and mackerel smoking; free fly tying workshop; "Late for Lunch" canoe race/paddle; fried Smelt meal; FMI call (207) 483-4336 or visit www.mainesalmonrivers.org/

Black Fly Brewfest held each Spring; sample a wide variety of beverages from the wineries and breweries; a corn hole tournament in the morning. Hours: 11am-5pm Millar Civic Center, 109 Main St. Houlton, ME FMI visit www.blackflybrewfest.com/

MAY

Intermediate to Professional Level Pottery Classes Wednesdays in May & Jun, 6-8pm, These Wednesday classes are intended for people who have some basic clay experience, and who can work somewhat independently on projects; register at cobscookinsitute.org

Mixed Level Pottery Classes Thursdays in May & Jun, 2:30-4:30, These community classes are targeted toward creating both aesthetic and functional work, and although we learn in a focused manner, we also have fun.; register at cobscookinsitute.org

Harald Saeverud Music Program Spring Event; May 10-12; Events held in Machias, Eastport and Calais. FMI see www.hsmusicprogram.com

Huntsman Marine Science Centre | Fundy Discovery Aquarium St. Andrews, NB, Canada; open for season from 10 am- 5 pm daily from mid May to Oct; FMI visit www.huntsmanmarine.ca/

West Quoddy Head Lighthouse Open for season Memorial Day weekend; 10 am - 4 pm; 973 South Lubec Rd, Lubec, ME; FMI visit visitlubecmaine.com

Downeast Spring Birding Festival Memorial Day Weekend, a unique birding experience during spring migration and the breeding season with guided hikes and boat tours, Over 400 bird species have been sighted in Maine. Downeast Land Lakes Trust is hosting tours as part of the 20th annual Downeast Spring Birding Festival Forestry for the Birds Walk - Saturday at 3-6pm; There are a full list of events, many are free. Register to see a full list of events, times and locations call (207) 733-2233, or visit www.thecccl.org/birdfest

Opening Day - St Croix Island Park; Memorial Day Weekend; US Rte 1, Calais; Saint Croix Island International Historic Site, part of the National Park Service system opens for season; FMI www.nps.gov/sacr

JUNE

Intermediate to Professional Level Pottery Classes Wednesdays in May & Jun, 6-8pm, These Wednesday classes are intended for people who have some basic clay experience, and who can work somewhat independently on projects; register at cobscookinsitute.org

Mixed Level Pottery Classes Thursdays in May & Jun, 2:30-4:30, These community classes are targeted toward creating both aesthetic and functional work, and although we learn in a focused manner, we also have fun.; register at cobscookinsitute.org



Eastport Artfests

- June 28-30, 2024
- August 3, 2024
- October 26, 2024
- February 2025

Downeast Pride
Mermaid Festival & Parade
Witches of Eastport
Hearts for the Arts

eastportartfests.org



DOWNEAST RAINBOW ALLIANCE

downeast pride

Last Weekend in June

presented by
eastportartfests.org
lampsdowneast.org
downeastrainbowalliance.com



Mermaid Festival

First Saturday in August



Witches of Eastport

Saturday before Halloween

Down East Hospice Volunteers Annual Race held each year the first Sunday of June - run, walk or stroll; 10K / 5 K; one mile fun run - kids ten and under; FMI call (207) 214-2877 or emaucicette90@gmail.com; register online www.cobscookbayroadraces.org

Rhubarb Festival Jun 1; 12-5 pm; Kendall Farms, 20 Kendall Ln, Perry, Maine; live music, food booths, raffles, games, cooking competitions, demos, tasting, FMI visit KendallFarmCottages/RhubarbFestival

Abbe Museum Indian Market the weekend of Jun 2-4; on the Village Green, Bar Harbor; FMI www.abbemuseum.org/indian-market

Moosehorn National Wildlife Refuge's Annual Childrens Fishing Derby; Jun 16, 10 am-12 pm, Cobscook Bay State Park; prizes, family fun, food, drinks and even some fishing supplies. FMI www.fws.gov/refuge/mossehorn

Spring Clean-up in Grand Lake Stream Jun 15, 8:30 am – 2 pm. Celebrate spring by helping pick up trash along the roads and trails. Gloves, trash bags, water and lunch included. FMI visit info@downeastlakes.org

Margaretta Days Festival Jun 14 & 15, UMM Campus, Machias, Maine; Colonial re-enactments on Friday night; Liberty Ball on Saturday night, dance lessons during the day, colonial garb, dancing and music, demonstrations, arts & crafts, parades, food vendors exhibits; admission FREE; FMI call (207) 255-3422 or visit www.margaret-tadays.com

Summerkeys Concert; free admission; Jun 19, 7:30 pm; Congregational Christian Church, Lubec, ME; John Newell – piano, Ina Litera – Viola, Matt Goeke – Cello www.summerkeys.com

Bird Walk with Ken Grant Jun 22, 10 – 11:30 am meet at DLLT headquarters. Learn about common and uncommon bird species to the Grand Lake Stream area. Open to everyone! FMI visit info@downeastlakes.org

Crush Cancer 5K Jun 22; Jonesboro, Maine; hosted by Jonesboro Grange. Craffair, kids fun run, raffle, spaghetti dinner. More info at <https://runsignup.com/Race/ME/Jonesboro/CRUSHCancer5kWalkRun>, or email crush-cancer@outlook.com

Moosabec Summerfest Jun 22 – Jun 30; downtown Jonesport, Maine; lobster dinners, lobster boat races, crate races, music, fireworks, vendors, parade. admission FREE; FMI visit <https://www.townofjonesport.com>

Summerkeys Concert; free admission; Jun 26, 7:30 pm; Congregational Christian Church, Lubec, ME; Alan Kryszak - Piano - Piano www.summerkeys.com

ATV Jamboree Jun 28-29; 9am - 8pm; Machias, ME; craft fair, food vendors, benefit ride for The Ark Animal Shelter in Cherryfield, live band; Middle River Park. FMI www.machiasatvjamboree.com/

Down East Pride; Jun 28-30; Celebrate creativity, inclusivity and Pride in partnership with the Downeast Rainbow Alliance, Lubec Area Musicians Society (LAMPS) and all of our "Partners in Art". We will welcome back the Curbside Queens drag show and offer rainbow themed art activities for all ages. Moonlight movie Friday in Eastport. Events in Eastport all day Saturday and Lubec on Sunday. FMI: www.eastportartfests.org

Join LAMPS, Downeast Rainbow Alliance and ArtWalk for a concert at Stockford Park, Lubec. Celebrate Pride and enjoy ArtWalk events. FMI visit <https://www.lampsdowntoneast.org/event>

Canoe Shop and Museum Tour; Jun 29, 12:45 – 3 pm meet at DLLT headquarters. Learn about the craft of building canoes and the historical significance of canoes to the Grand Lake Stream guiding industry. FMI visit info@downeastlakes.org

LAMPS Summer Concert Series Jun 30. 1-5 pm; South Water St, Lubec, Maine; Pride in the Park with music from the Extreme BEER Trio, Hot Velvet and The Milk & Honey Rebellion! Rain Venue: Lubec Brewing Company;

Bay of Fundy International Marathon cancelled for 2024. FMI visit www.bayoffundymarathon.com

JULY

Canada Day Jul 1; celebrations St Stephen NB – beginning at 8am; at the waterfront; farmers market, water inflatables for kids, live music, cake.

Summerkeys Concert; free admission; Jul 3, 7:30 pm; Congregational Christian Church, Lubec, ME; Gregory Biss - Piano, Dan Alcott – Cello www.summerkeys.com

Eastport 4th & Homecoming; Jul 1 - 5, Eastport, Maine; art, music, food vendors, fireworks, 7 mile race, sail boat, bike and Cod races; Admission FREE; FMI call (207) 853-7076 www.eastport4th.com

Machias 4th Jul 4; Machias, Maine; parade at 6 p.m. followed by fireworks at the dike

Independence Day GLS; Jul 4, DLLT, race for Grand Lake Stream, 3 mile foot race, beginning at the shores of Big Lake, and ending in the village; afternoon parade, and then grab a tube and float down the river. FMI visit info@downeastlakes.org

Trail to Tomorrow + Geocaching; Jul 6, 10 am – 12 pm. At the DLLT walk along the Trail to Tomorrow with us and learn about the fun hobby of Geocaching. FMI visit info@downeastlakes.org

Summerkeys Concert; free admission; Jul 10, 7:30 pm; Congregational Christian Church, Lubec, ME; Halcyon DUO – Eve Friedman – Flute, Roberto Pace – Piano www.summerkeys.com

Summerkeys Concert; free admission; Jul 17, 7:30 pm; Congregational Christian Church, Lubec, ME; Jennie Litt, David Alpher - Cabaret www.summerkeys.com

Quill Jewelry Making Demonstration at DLLT headquarters; Jul 15, 12-3 pm; Reanna will showcase pieces of quilled art, demonstrate her methods, and will provide materials for the first 12 registrants to create their own quill jewelry! FMI visit info@downeastlakes.org

Puckerbrush Primitive Gathering; Jul 19-21; Pleasant River Fish & Game Conservation Assoc, Columbia; celebration of traditional archery, bushcraft, art, outdoors, and ancestral skills; "hands on" event, kids of all ages encouraged to get their hands dirty; food options available; feel free to bring a musical instrument for afterward. FMI <https://www.prfgca.org/events>

Summerkeys Concert; free admission; Jul 24, 7:30 pm; Congregational Christian Church, Lubec, ME; Charles Jones – Piano; www.summerkeys.com

Grand Lake Stream Folk Art Festival; Jul 27-28; Grand Lake Stream, Maine; music, folk art, crafts, activities; FMI call (207) 796-8199 or visit <https://grandlakesstream.org/events.htm>

Downeast Lakes Land Trust Annual Picnic; Jul 28 at DLLT headquarters, 12-2 pm; annual meeting, picnic, and auction; FMI visit <https://downeastlakes.org/>

LAMPS Summer Concert Series; Jul 28, 1-5 pm; Join us for a concert of traditional Gaelic and folk music featuring Fiddlechick, Picky & Plucky and O'McCrelli; Stockford Park, South Water St, Lubec, Maine; FMI visit <https://www.lampsdowntoneast.org/event>

Summerkeys Concert; free admission; Jul 31, 7:30 pm; Congregational Christian Church, Lubec, ME; Faculty Chamber Concert No 1 www.summerkeys.com

AUGUST

New Brunswick Day Aug 1; celebrations – beginning at 8 am at the St Stephen NB waterfront; each year, the first Monday of Aug; foster the spirit of togetherness.

continued on page 28



137 Milford Rd, Grand Lake Stream, Maine 04668 (207) 796-2100 downeastlakes.org



We protect and improve fish and wildlife habitats...

Support jobs in the forest and on the water...

Provide public recreation opportunities...

Offer educational programs...

Discover...



Downeast Lakes Land Trust is a 501(c)(3) nonprofit organization

GRAND LAKE STREAM



The reflection of celebration at Grand Lake Stream.

Photo by Julie Keyes

Little Falls Recreation Area Located two miles southeast of town, accessed by Water Street; public access area managed by Maine IF&W, and provides great access to the stream to fish

Middle Walk & Childrens Canal A wooded walkway alongside the canal; each year the canal is stocked with brook trout for children's fishing only (15 and under)

Downeast Land Lakes Trust has eleven water-accessed sites on several area lakes and streams. Two sites on Rolfe Brook are drive-up only, about four miles west of town, both are available for day-use and camping. Each site has a privy and picnic tables. Camping at DLLT sites is free, available on a first-come basis; three-night maximum stay. Campfires are allowed with a permit from the Maine Forest Service at (207) 827-1800.

Tennis, Pickleball & Basketball Courts located off of Milford Road (before you get into town); open to the public, visit the GLS Chamber of Commerce website FMI: grandlakestream.org

Geocaching the DLLT Geocache Challenge consists of 25 geocaches placed in different areas throughout the Downeast Lakes Community Forest; sites highlight the local history, ecology, and geology of the Grand Lake Stream region. Find the list under the title "dlltgeochallenge" by visiting www.geocaching.com

Swimming available at the town beach, located off of Shaw Street

Fishing & Hunting a destination for fishing and hunting since the first "sports" hired Passamaquoddy guides in the 1800s. The Community Forest is open to the public and adheres to all federal and state laws. Regulations and licenses are available online or at the Pine Tree Store. Find a Registered Maine Guide to lead your next adventure at grandlakestreamguides.com

Historic Museum Open Sundays or by appointment. Memorial Day to Labor Day 1-3 pm

Fish Hatchery Operated by Maine IF&W, the Grand Lake Stream Fish Hatchery was established in 1936. Call (207) 796-5580 to schedule a tour.

Fly fishing West Grand Lake has more than 14,000 acres of clear stream-fed waters. It has been regulated as fly fishing only since 1903 and the salmon for which it's famous follow the smelt up river each spring, in waters that anglers dream about. Of course, there are other lakes as well, including Big Lake and Love Lake, where trout, bass and togue are plentiful. Hire a fishing guide to help you improve your casting and find the best spots.

Hiking and Camping There are an abundance of hiking trails, day use and camping areas in Grand Lake Stream. See the Trails and Camping sections for more information.



Photo by Brewer Andrews

Grand Lake Stream Area

Traditional Sporting Camps
Country Inns · Lakeside Cottages
40,000 acres of connecting lake and river systems
Tour fish hatchery and museums

grandlakestream.org

Big Lake RV Park & Campground
www.biglakerv.com
207-796-2987

Alexander Art Trail - A Wonderful Summer Escape *by Kaileigh Deacon*

Out amongst the trees along the edge of Barrows Lake there is a winding path that will lead you through the woods and on a journey of a most unusual kind. The Alexander Art Trail is off Route 9 down a dirt road or two.

Constructed nearly ten years ago the project has become a “labor of love,” according to Edward Paegle. The trail



was started by his father, Roland Paegle who got the idea for the trail while in the Baltics. There he saw trails that had sculptures along them and noticed that the landscape was very much like the Maine landscape he called home. With this idea he came home to Alexander and aimed to create a similar concept here. Initially, it was meant to be a heritage trail, but it soon changed into an art trail featuring the sculptures that Roland himself made.

The trail has grown over the years and while a majority of the pieces along the trail are those of Roland but there are other pieces along the trail that are made by local artists as well as a few from other places as well. Walking through main entrance of the trail you

are welcomed by cases containing some of the smaller pieces, tree ornaments, painted rocks created by other artists including local school children who have visited the trail.

The pieces along the trail are wonderful and full of character each one seeming to have a story to tell. What story, well Paegle like to leave that to the people walking the trail as did his father. “What does it look like to you?” is their response when asked what a piece is supposed to be.

Aside from the sculptures a little further down the trail over a bridge you will enter Driftwood Court. “All the driftwood comes from our lake,” Grazina says. Roland studied art and specifically abstract art and this education and appreciation is evident in the Driftwood Court.

The Trail is more than a short walk through the woods is a place to escape the fast paced busy world we are so accustomed to living in. Along the path there are benches for people to stop, rest, and relax on. “We’ve had people come out here with their meals and just sit



and enjoy,” Edward says. There is a serenity that falls around you as you walk through entrance to the trail as the magic of the woods and the art settle around you.

Local schools and summer groups go out to the trail not only to walk it and get exposed to the various pieces of art along it but to add to it as well. Along the trail is a sculpture that was created by one of the groups of kids that has visited the trail based on a story they read called “The Very Hungry Cater-

continued on page 16

Specializing in Coastal Maine Real Estate

 Samra Kuseybi	 Libby Bryant
 Shirley Erickson	 Aaron Currier

Call us today to start your home buying or selling journey with one of our expert agents!
877-350-4409 www.tcgre.net

BARING, ALEXANDER, BAILEYVILLE & PRINCETON

Pocomoonshine Lake Boat Launch from Calais go north on US Route 1/US-1 N towards Baileyville; continue to follow US-1 N, pass through the roundabout, (9.15 miles), turn slight left onto S Princeton Rd., (2.30 miles), S Princeton Rd becomes Woodland Rd. (2.13 miles), Woodland Rd becomes Lake Rd., (0.34 miles), Pocomoonshine Lake Boat Launch; your destination is just past Seamans Rd. If you reach Shore Dr you've gone about 0.1 miles too far.

Lawrence Lord Old Farm Museum 1260 Airline Road, Alexander; two barns full of unique and interesting farm tools, lanterns, wagons and antiques; farm museum is open by chance, and a suggested donation of \$5 is always nice. If you are interested in this unique museum visit Lawerce Lord & Sons Inc (next door) or call (207) 454-2612

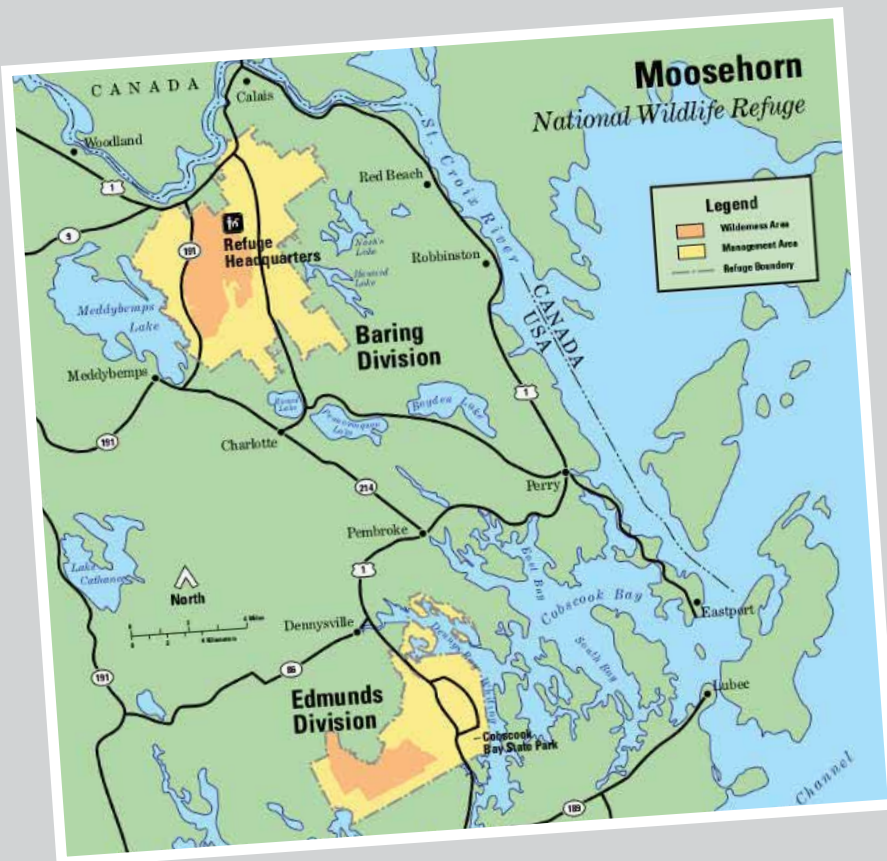
Pleasant Lake Campground 371 Davis Rd, Alexander, 04694; swim area / beach; FMI check Facebook page

Passamaquoddy Cultural Heritage Museum 197 Rte 1, Princeton, Maine; open Mon - Thurs, 10am - 3pm; see artifacts of Passamaquoddy, birch bark baskets, woven baskets, beadwork and much more.

Woodland Parks and Recreation Department part of the town of Baileyville - offers a variety of activities for children and adults. Tennis, pickle bal and basketball courts, softball and baseball fields can all be foud around town. FMI see the Facebook page.



ART TRAIL 70 Barrows Lake Road, Alexander, features a large, hand-carved, outdoor sculpture collection; For more information look up the Alexander Art Trail on Facebook or www.arttrail.net



Moosehorn National Wildlife Refuge is a northern treasure in the National Wildlife Refuge System at 103 Headquarters Rd, Baring. It consists of nearly 30,000 acres of federally protected lands. The refuge provides nesting, feeding and breeding habitats for many different species, from tiny golden crowned kinglets to black bears and bobcats. Visitors can enjoy the refuge by car, foot, bike or horseback. A large portion of the refuge is a designated wilderness area, and provides an escape from the chaos of modern life. Hiking trails provide access to remote areas of the refuge. See the Trails section or website for more info. <https://www.fws.gov/refuge/moosehorn>

A Gallery of Fine Art and Abstract Expressionist Art in Dennysville

by Kara Mitchell

The building that currently houses Atelier LaForest Gallery at 3 Cemetery Road, Dennysville, has a long history. Built around 1912, and serving as a mill building on the Dennys River, the building saw much changeover. In 1930 the building was moved, and served as a parking garage for oil trucks, and for a long time it was a chicken barn. The three surrounding towns came together and purchased the building at a low cost, to use as a youth recreation / community center. Melinda Munford Jaques purchased the building in 2013. The only thing remaining true to the origin of the building (besides the structure) is the floor; everything else has been added and improved. The building tilts because there was no foundation on three sides. There is an 18 inch difference from one side to the other. The posts are all secured by concrete, but prevent the building from ever being leveled. Jaques considers it her own Tower of Pisa.

Jaques is the daughter of the prolific artist and sculptor, Mei Savage Brady, and the late wife of the famous artist, Robert Munford. Her mother's works were exhibited widely on Long Island and in New York City for over 50 years. Several of Brady's pieces are in the permanent collection of the Islip Art Museum, but Jaques holds much of her mother's work in her personal archive. Living most of her life in New York Jaques saw a change in a semi underdeveloped Hampdens to a crowded place. Someone had told her about the rural area of Washington County and she and husband, Bob Munford visited in 1987 and bought a summer home in Machiasport. Munford passed away in 1991, but Jaques kept returning to the pristine beauty of Washington County.

Robert Watson Munford was an American artist, educator, and founding member of the artist group Grupo Ibiza 59 in Spain, his work evolved after arriving in Spain to early Pop art (an observation first written about by writer John Ashbery in his reviews about Munford's work in



A mill building built in 1912 which used to sit on the Dennys River; but got moved across the street in 1930.

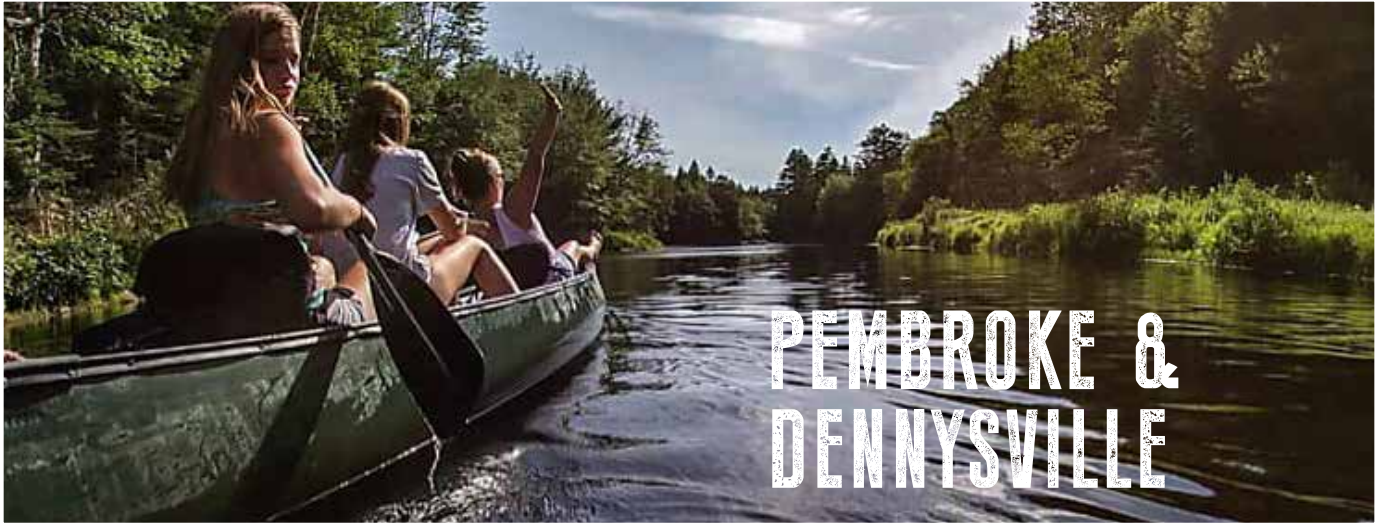
t h e

Paris Edition of the N.Y. Herald Tribune.) His European work has also been described as Neo-Expressionism. His artwork is in the permanent collections of the Hirshhorn Museum and Sculpture Garden in Washington, DC; the Museum of Modern Art in New York, and the Städtische Galerie Wolfsburg in Germany.

Abstract expressionism is a post-World War II art movement in American painting, developed in New York City in the 1940s. It was the first American movement to achieve international influence, and put New York at the center of the Western art world, a role formerly filled by Paris. Artists were deeply influenced by the idea of exploring the unconscious, and often studied the ideas of Carl Jung, and his exploration of myths and archetypes. The movement expressed emotions and universal themes through their post-war mood of trauma and anxiety. Valuing freedom, spontaneity and personal expression, the art naturally produced a variety of technical and aesthetic innovations around two major tendencies: action painting and color field painting. Color field painting is a style of a single flat color, meant to produce a contemplative or meditative response, searching for transcendence, and their expansive, emotive fields of color were meant to engulf the viewer and inspire spiritual contemplation and intense feeling. Beautiful Ghosts, an exhibition shown last summer at the museum in Dennysville featured work of five internationally shown artists, who all actively exhibited together as an organized entity of Grupo Ibiza 59 in Ibiza, Spain from 1959 to the early 1970's. The Grupo 59 artists moved to Spain shortly after WW2 from Sweden, Germany, Canada, and United States to do their art on this quiet island in the Mediterranean Sea. The building is a beautiful gallery space with a north-east facing light. If interested about upcoming exhibitions and would like to be added to the invite list email melindajaques620@gmail.com.



Atelier LaForest is located at 3 Cemetery Road in Dennysville.



Complimentary canoes are provided at Robinson's Cottages to enjoy the Denny's River

Smithereen Farm 4 Leighton Point Rd, camping accommodations, pick berries at the farm, join a seminar or event or check out their website for more information greenhorns.org or email office@greenhorns.org



Lincoln Memorial Library 17 King St, Dennyville, hours: Mon: 4-7, Tue: 1:30-4, Fri: 1:30-4; FMI call (207) 726.4750

Dennys River from the outflow of Meddybemps Lake in Meddybemps, the river runs about 23 miles southeast and east to Dennyville; where it becomes tidal and soon joins the Hardscrabble River estuary to form Denny Bay. An Etchemin tribe arrived first by coming up the winding Denny River from the coast and set up camp on shore, west of the rapids.

Reversing Falls is an unusual phenomenon on the coast, whirlpools, and turning tides in Pembroke, Maine. The walking trail begins at the eastern parking lot, continues along the wooded shore, two spur paths lead off the trail onto peninsulas that provide varying views of the falls and a panorama of Cobscook Bay. Directions: Take Route 1 to Pembroke; turn east onto the extension of Route 214, (immediately beside the construction spot of the new Freshies); turn right at the stop sign, take an immediate left up a small hill onto the Leighton Point Road; continue 3.3 miles, then turn right onto Clarkside Road; continue for 1.2 miles; at the end of Clarkside Road, turn left onto a dirt road and continue for 1.5 miles to the parking area.

Sawyer Observatory America's most easterly observatory; several different types of telescopes including reflectors and refractors; FMI email [Charlie Sawyer7@roadrunner.com](mailto:CharlieSawyer7@roadrunner.com)

Atelier LaForest Gallery located at 3 Cemetery Rd, Dennyville, the building boasts a beautiful gallery space. For info on upcoming exhibitions or to see the in house collections email melindajaques620@gmail.com.

Patrick Lake Boat Landing Picnic area (for day use only) and privy at Patrick Lake; take coastal US Rte 1; turn right on Route 86 at the Denny's River, follow the winding road, and Patrick Lake is on the right.



SMITHEREEN FARM
CERTIFIED ORGANIC
 ALL THE WAY DOWNEAST IN PEMBROKE, MAINE

**FARMSTORE OPEN
 May 1-October 1**

FRESH ORGANIC VEGETABLES AND FRUIT • JAMS
 LOCAL DAIRY • CHEESES • MEAT • FISH • BREAD • TEAS
 COFFEE • CHOCOLATE • HONEY • BOOKS • GIFTS



ORGANIC PRODUCE AND PRODUCTS FROM SMITHEREEN FARM
 PLUS DELICIOUS TREASURES FROM LOCAL MAINE PRODUCERS

Stop in for your local food + farm map
 12 LITTLE FALLS ROAD, PEMBROKE

SMITHEREENFARM.COM

Redclyffe Shore Motor Inn

www.redclyffeshoremotorinn.com

Seasonal
Opening Date: May 30th to
October 30th 2023

207-454-3270

US Rte 1, Robbinston, Maine

Life Along The Border

continued from page 5

Stephen, NB and spend the day at Ganong Nature Park right down the road.

The three international border stations between Calais and St. Stephen comprise one of the busiest border crossings between the United States and Canada. But, according to border officials, Mainers and New Brunswickers make up the majority of the traffic.

While St. Croix River Valley residents share much in their lives, they do not share a common clock. Calais is located in the Eastern Time Zone. St. Stephen is in the Atlantic Time Zone, one hour later than Calais. Consequently, if one overhears two local folks planning a lunch date, the parting question always is, “Are we meeting at noon your time or my time?”

The Canadian side of the River also measures speed and distance in kilometers, snow and rain in millimeters, weight in kilograms, and temperature in Celsius. So don’t be alarmed, for example, if a Canadian driver claims to be speeding down the road at a 100 – that’s 63 mph.

Both sides of the border enjoy abundant news and entertainment media outlets. It’s as easy to learn about proceedings in the New Brunswick Legislature as it is to learn about decisions made in the Maine Legislature. News of the U.S. Congress in Washington is as easily obtained as news of the Canadian Parliament in Ottawa. Learn the history of the area at the Charlotte County Museum; open summer season.

Alexander Art Trail

continued from page 12

pillar” by Eric Carle. Each kid got to decorate one of the stones that makes up the body of the caterpillar.

The Alexander Art Trail is open from when the snow is cleared away, usually May, through October. The Trail is run through a cooperation of a non-profit organization and a local land owner so guests are asked for a \$2 donation if they can. The Alexander Art Trail is also interested in getting more kids out the trail to show them the different pieces of art. If you are interested in the Alexander Art Trail you can check out their Facebook page as well as their website www.arttrail.net.

If you’re looking for something fun and different to do this summer take a drive out past the Pleasant Lake Campground an park in the Boathouse workshop area and let yourself get lost in the pieces.



**See you August 3 at
Robbinston Days!**



Photo by Amie Flowers

ROBBINSTON

During the mid-19th century, Robbinston was a last stop for the Underground Railroad where escaping slaves would cross over into Canada and freedom. One of the houses that supported them still stands, the John N. Brewer Sr Mansion. Built in 1785 with an addition added around 1821, it is on the National Register of Historic Places. The John N. M. Brewer Jr House built in 1826 is across hwy 1 and is now operated as a B&B. Other historical sites in Robbinston are the Grace Episcopal Church, James S. Pike Racing Milestones, Pulpit Rock, Henrietta Brewer Cottage (wife of John Brewer Jr) (Redclyffe Shore Motel) and Sewall Memorial Congregational Church, with its roots in 1817.

Boyden Lake Boat Launch is located on the Ridge Rd, .8 miles past Hilltop Campground **Elton R. Brooks Memorial Rest Area** on Rte 1. There is a picnic area; outhouse; boat launch; beach access; views of St. Andrews, New Brunswick, Canada

The Edge Gallery 685 US Route 1. Peter Johannes - multi-disciplinary artist- writer, sculptor, photographer; award-winning author; is the owner/operator of The Edge Gallery. FMI call (207) 436-3473 or email moc.asu@sennahojretep

Robbinston Historical Society is a nonprofit organization; visitors' center located on Route 1 next to the Grace Chapel, available for event rental; FMI call (207) 454-3455 or visit <https://townofrobbinston.org>

Hilltop Campground 317 Ridge Rd. camping, playground, pool, rec hall, planned activities, Trout pond paddle boat rentals, horseshoe pits, basket ball court; FMI call (207) 454-3985 or visit <https://www.hilltopcampground-maine.com>

Mill Cove has been a popular picnic spot for well over a century. In the past, high school classes and social groups often took steamship to Robbinston to spend the day at Mill Cove; today one must drive.



Pulpit Rock One mile out from the shoreline of Mill Cove this unique formation is a single mass of red sandstone that is 38 feet high and only 18 feet at the base. The top of the rock is 21 feet in diameter and has hearty plants living on it. Be sure to check the tide chart and time your hike with low tide, as the tide can leave you stranded, (meaning you must swim with the tides to return)



MACHIAS



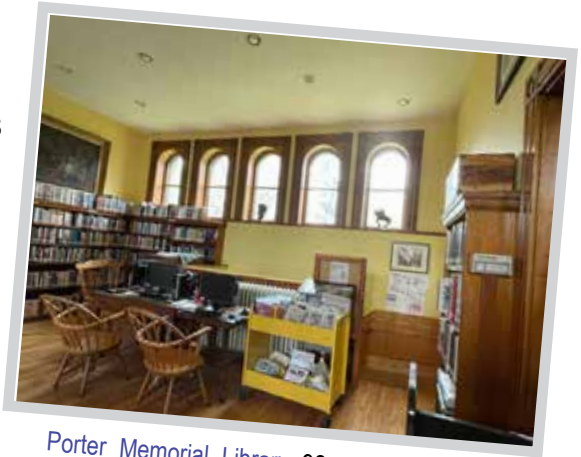
Mahoney Gaming Emporium 4 Main St, Suite 2, Machias; a public space to utilize board games (free), shop for Magic, Star Wars Legion and Dungeons & Dragons or Pokemon official cards and events; get lessons on gaming or meet people with like interests, FMI call (207)814-8112 www.mahoneysgamingemporium.com

Wild Blueberry Land 1067 US Hwy 1, Columbia Falls; Wed-Sun, 9am-2pm; museum and shop; FMI visit <http://www.wildblueberryland.com>

Bad Little Falls Park bridge and platform over Machias river, overlooking waterfall; short path; Machias grange; open year-round at the Rte 1 www.downtownfisheriestrail.org

Historic Railroad Station 2 Kilton Ln, Machias; historic railroad station near the junction of Court and Main Streets; built in 1898; one of five surviving stations built by the ambitious but unsuccessful Washington County Railroad. The station is used as a visitor center and community meeting space.

Burnham Tavern dates back to the American Revolution; filled with artifacts; the Daughters of the American Revolution give tours; call for reservations



Porter Memorial Library 92 Court Street, Machias; public hours: Tues – Fri, 10am to 5 pm; Sat 10 am - 1 pm; www.porter.lib.me

Sunrise Canoe and Kayak guided trips on the Machias River; Maine master guides, 20+ years experience; custom itineraries available for large groups; delivery system for canoes and kayaks to numerous lakes, rivers and bays of the region; St Croix River expeditions are also available; they have a base camp at Cathance Lake; call (207) 255-3375 or visit www.sunrisecanoeandkayak.com or www.sunriseexpeditions.com



Pictured above is the sandy beach of Roque Bluffs State Park

Photo by Jessica Griffin

Roque Bluffs State Park 274 acres on Schoppee Point (south of Machias); coast of the Atlantic Ocean; 274-acre state park overlooks Englishman Bay from Schoppee Point and includes 60-acre Simpson Pond and six miles of walking trails; inspect glacial striations attesting to the Ice Age history of the Maine coast. The park is managed by the Maine Department of Agriculture, Conservation and Forestry.

Great Cove Golf Course 387 Great Cove Rd, Roque Bluffs; 9-hole course; a par of 27; designed by Paul Brown, the Great Cove golf course opened in 1977. FMI call (207) 434 7200

Roque Bluffs Community Center Roque Bluffs; all are welcome; some programs you'll find at the community center are Barre Workout, Line Dancing, Yoga, watercolor painting, and photography. During the year the organization also hosts an Annual Quilter's Show in June, Artists and Crafters shows, and gallery exhibits. FMI see the Facebook page or call Bob McCollum – bob81848@msn.com or 207-263-8579

MACHIASPORT

Jasper Beach Machiasport; rocky shoreline; singing rocks, since (they create a melodic tone when the tides move); the beach is backed by fresh and saltwater lagoons and a salt marsh

Gates House 344 Port Road (Maine State Route 92), Machiasport; museum built in 1807; listed on the National Register of Historic Places in 1975; FMI <https://www.machiasporthistoricalsociety.org>

Fort O'Brien State Historic Site Machiasport; constructed in 1775, the fort is open to the public as a state park during the summer months; overlooks the site of the first naval battle of the Revolutionary War, June 12, 1775, between the British armed schooner *Margaretta* and the colonist's sloop *Unity*, which emerged victorious.

JONESBORO

A town in Washington County, incorporated on March 4, 1809; previously known as Chandler's River. Hannah Westin, and her sister, carried 50 pounds of lead through the woods from Jonesboro to Machias to support the effort to capture the British vessel *Margaretta* in 1775.

Barren View Golf Course Jonesboro, Maine (Machias Bay area); nine-hole, par 35 course plays to 5,622; driving range, putting green, practice sand trap, Pro Shop, snack bar, electric carts; late April – Nov. 1st; FMI call (207) 434-6531

Hatch Knoll Farm 29 Hatch Knoll Rd., Jonesboro, Maine; a small diversified family farm specializing in award winning Goat Milk Cheese, Blueberries, Pasture raised meats; open by chance, baby goats, and home to Garden Side Dairy and Woodland Oasis Camping; FMI call (207) 434-2674



JONESPORT

A fishing town neighboring Beals Island, Jonesport offers quiet nature trails and scenic vistas complete with colorful lobster boats bobbing in the harbor. Jonesport stakes its claim as home to the world's fastest lobster boats. The Annual Lobsterboat Races are posted in the calendar of events. Ask the locals to tell you about Tall Barney, one of the town's colorful characters, perhaps on a local boat tour charter. There is also a public boat launch if you wish to ply the waters of Moosabec Reach yourself. Drone photo by Laurie Churchill

Downeast Institute Black Duck Cove, Great Wass Island; Year-round (M-F 9-3); Since 1987, the Downeast Institute for Applied Marine Research and Education has worked with fishermen to enhance populations of marine species that sustain the Downeast Maine economy. With

sters, all in partnership with fishermen and growers. Tour the hatchery or learn how the Institute engages students of all ages in their work at the annual Shellfish Field Day. FMI call (207) 497-5769 or visit www.downeastinstitute.org



Kyle Pepperman gives tours of the institute, shown here is where they grow the algae to feed shellfish. DEI uses various different methods to circulate water and feed the young clams, oysters, mussels, and scallops.

Maine Coast Sardine History Museum- Jonesport; open from the third Sunday in June through Sept; Tues through Fri and Sat from 12 - 4 pm.

Jonesport Historical Society Sawyer Building at 21 Sawyer Square; open to visitors from May to Oct; discover the history of the area; FMI call (207) 497-3003 or email jonesporthistoricalsociety@peabody.lib.me.us

origins in the development of methods to raise and grow soft-shell clams, the Downeast Institute for Marine Research and Education has provided juvenile or "seed" clams to replenish clam flats in more than 60 Maine coastal towns and has expanded to study hard clams (quahogs), European oysters, Arctic surf clams, sea scallops, and lob-



The Scissor Wall is a tribute to all of the sardine packers, originals used by the ladies in the factory, with their names displayed.




Eastern most gift shop in the United States
Proudly serving customers since 1990

16 Loon Lane,
Lubec Maine 04652

www.westquoddygifts.com

LOCAL BEER,
LOCAL CHARACTER



43 WATER STREET, LUBEC
(207) 733-4555




Reservations: 207-733-5501

Route 189, 385 County Road
Lubec, Maine 04652



Perched atop the rocky black cliffs of the bold coast, *Quoddy Head State Park*
Photo by Nicole Michaud

Stockford Park is a park located on Lower Water Street. The park features a stage, the "Beyond the Horizon" sculpture by Valerian Jikia, a picnic area and a view of Campobello Island, NB. Free concerts are held during the summer. FMI see the Facebook page.



Lost Fisherman's Memorial The names of the lost fishermen are honored on the park's Wave sculpture created by Jesse Salisbury. Lost fishermen who perished in the waters of Washington County, Maine or Charlotte County, New Brunswick, or fishermen that lived in those two counties and were lost in other waters while fishing are displayed. The list also includes those lost since the year 1900.

Gateway Campobello Island International border crossing; the largest and only inhabited island in Campobello, New Brunswick, Canada. The island was originally settled by the Passamaquoddy Nation, who called it Ebaghuit. It's only highway, Route 774, is connected by the Franklin Delano Roosevelt Bridge to Maine – the easternmost town in the continental United States. The only transportation link with the rest of Canada is a seasonal ferry service to Deer Island Point, New Brunswick.

Mowry Beach Take U.S. Route 1 to Lubec village, bearing right on Washington St, take third right onto Pleasant St. (just before the International Bridge) and continue to the end (0.3 mile) to the beachside parking lot and trailhead; 48-acre Mowry Beach Preserve; convenient public access to one of the easternmost sandy beaches in the country. Situated along the edge of the village; this location protects 1,800 feet of shoreline along a 1.2 mile beach overlooking Lubec Channel and Campobello Island. Within the inland portion of the preserve, a 1,700 foot wooden boardwalk passes through coastal-scrub woodland and skirts a sphagnum bog and cattail swamp. Along the lower portions of the beach at low tide, the remains of ancient tree stumps can be seen indicating the location of a primeval forest. This preserve was acquired with the support of the Land for Maine's Future program in 2004.

Little River Lighthouse Cutler, Maine; FMI visit www.littleriverlight.org/



*Little River Light Station, Cutler, ME;
American Lighthouse Foundation photo*

See the Trails and Camping sections as well for many other points of interest in these towns.



Canadian Whale Institute Marine Life Interpretation Centre on Mulholland Point, Campobello Island; education on North Atlantic right whale biology, research and conservation, as well as local marine life on the Bay of Fundy shore.

Mulholland Point Lighthouse 1B4, Narrows Rd, Welshpool, NB, Canada; built in 1885, Mulholland Point Lighthouse overlooks the narrow Lubec Channel between Lubec and Campobello

Carriage Roads & drives a variety of scenic views; bike along: soft and hardwood forests, salt water coves, sand and gravel beaches, cliffs, offshore islands, and an array of migratory birds and wildlife. Vegetation is allowed to remain close to the road to retain the original character of the drives. Please note the carriage roads are not suitable for campers, buses, or recreational vehicles.

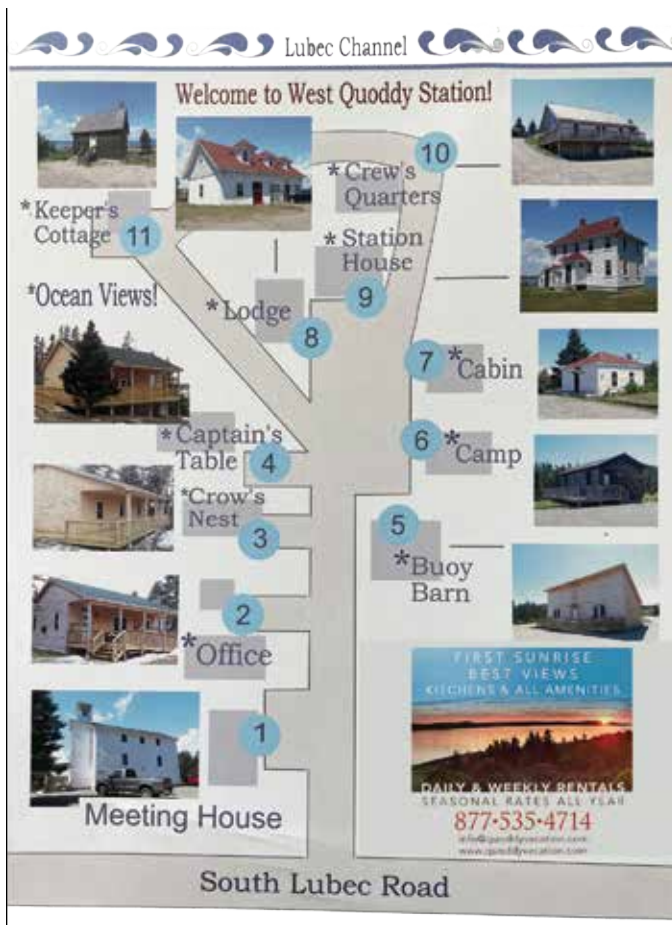


CAMPOBELLO

Roosevelt Campobello International Park NB, Canada; park is open May-Oct. The park is a singular example of international cooperation - jointly administered, staffed, and funded by the peoples of Canada and the United States. Franklin and Eleanor Roosevelt's magnificent summer home is preserved here in a combination indoor museum and outdoor nature park.

Sunsweep sculpture along the Raccoon Beach trail; aligned to trace the sun's path; only three in the world, spanning across North America; all three carved from a single slab of polished Canadian black granite, all three laser etched, an image of a woman's hand (traced by concentric rings fanning to resembling a topographical chart,

each ring becoming more circular to form a perfect circle with the last ring); along the Raccoon Beach trail; Roosevelt Campobello International Park's Sunsweep sculpture features an arc of polished granite truncated with a rough granite edge at the high point of the arc, which faces inland. Sculptor, David Barr John 1939-



East Quoddy Lighthouse Head Harbour (or East Quoddy) Lighthouse, built 1829; accessible by land (only at or near low tide) by a road between the north end of the island and Wilson's Beach. The first lighthouse constructed in New Brunswick outside of the Saint John Harbour; provides a daymark for navigating the St. Andrew's portion of the Bay of Fundy; various steam whistles, signal guns, and lamps to help aid navigation; the oldest surviving lighthouse in New Brunswick; received classified status from the Federal Heritage Building Review Office

What *to do* SUMMER CAMPS

CALAIS RECREATION DAY CAMP from 7:30 am - 4:30 pm for ages 6 years and up; weekly fee; includes swim lessons; and field trips and other activities. FMI call (207) 454-2761 or email calaisrec@calaismaine.org



Calais Day Camp Fun

DOWNEAST LAKES LAND TRUSTS CHILDREN'S AND FAMILY PROGRAMS happening all summer long, events vary each year. Past events have included camping, tours, crafts, geocaching, and many more public events in the 57,703-acre Downeast Lakes Community Forest. Stay tuned to www.downeastlakes.org, and follow Downeast Lakes Land Trust on social media for further details. To register for an event or FMI, email info@downeastlakes.org, or call (207) 796-2100

UNIVERSITY OF MAINE 4-H CAMP & LEARNING CENTERS

at Bryant Pond and Greenland Point coed; resident; many different types of camps such as leadership, woodcraft, wilderness survival, art exploration, aqua adventure, naturalist, warden, fishing, conservation, science adventure, hooked on bass, hunter appreciation, and others, 1-6 weeks; ages 6-18; FMI call (207) 665-2068 or visit umaine.edu/bryantpond or umaine.edu/greenland-point.



4-H Wilderness Survival Camp at Greenland Point

OUTDOOR SKILLS CAMP June 24-28; 10 am - 4 pm; optional overnight camp out Thursday night grades 6-8; Cobscook Institute, Trescott; Learn and practice basic

skills to keep you safe and fun in the woods and on the water; learn basic canoe skills; mess around building shelters in the woods; visit some of Washington County's amazing wild places; hike, hang out on beaches and swim; gather wood and learn to build fires, with s'mores of course; learn about "Leave No Trace" ethics and techniques, build personal camp stoves & survival kits; FMI visit <https://cobscookinstitute.org>

CANOE CAMP July 8-12; learn canoe skills, wilderness camping skills, food cooked on an open fire, participants sleep in tents, swim, fish, journal, and play games; FMI visit cobscookinstitute.org

DOWNEAST TEEN LEADERSHIP CAMP July 21-26; Cobscook Institute, Trescott; in-person; grades 7-9; DownEast Teen Leadership Camp (DETL) is Healthy Acadia's annual, five-day residential summer camp program for teens entering grades 7 through 9. DETLC primarily serves the youth of Washington County Maine, though teens from Hancock County and beyond are also welcome. DETLC offers five action-packed days filled with games and team building activities, amazing motivational speakers, and daily workshops focused on social issues that are important to you, like tackling peer pressure, substance use, embracing diversity, and more. And, of course, it wouldn't be summer camp without a pizza party, s'mores, and bonfires! FMI call (207) 255-3741 or e-mail me at sara@healthyacadia.org

KIDS HERBAL DAY CAMP July 17-19, 10 am - 3 pm. Join us for a 3 day exploration of that plants that surround us. Learn about the medicinal and mystical properties of some common wild herbs, like Cedar and Rose. There will be lots of fun outdoor games, and plant based art projects. FMI visit cobscookinstitute.org

RIVER CAMP July 22 - August 2; free; grades 9-12; A joint program of Downeast Salmon

Federation (DSF) and Cobscook Institute, teens who are accepted to River Camp are part of a co-ed youth crew and work alongside professionals on projects focused on habitat restoration and recreational access. Base camp is at the historic Wigwams Camp on the Wigwams Rapid on the Machias River, and participants venture out each day for work, skill building, exploration, and fun. Participants also experience camp life – swimming, playing games, and building outdoor skills. River Camp is a career-building experience. Just like a job, those who want to join River Camp submit an application and participate in an interview (see deadlines below). And, just like a job,



Sailing Camp held at two locations in the area.

those who successfully complete the River Camp experience go home with a stipend (not to mention new friends, new skills, and tons of great memories). The stipend recognizes the hard work that River Camp participants put into the conservation projects and the career skills built along the way. FMI call (207) 255-7348 or visit cobscookinstitute.org

YOUTH SAILING CAMP: Introduction to Sailing choose from the following date and location options: Indian Lake, Whiting Aug 5-9 or Keene's Lake, Calais Jul 29 - Aug 2; rising grades 4-9; beginner class for children; promoting positive experiences on the water and while sailing. cobscookinstitute.org

CAMP EAGLE WING Gardner Lake, Marion Township, Maine; traditional summer camp; coed; 150 acre; 75 campers; 25 staff members from all over the country; 1 to 6 weeks; FMI visit <http://www.campeaglewing.com>

EDGE SUMMER CAMPS Washington County students can register for five, week-long day camps running from the end of June to the end of July; K5 - 8th grade; outdoor exploration, sports, technology, cooking, crafts and field trips are some topics in years past; FMI call (207) 546-4466 or visit <https://www.seacoastmission.org>

YOUTH SAILING CAMP: Intermediate Sailing, Indian Lake, Whiting Aug 12-16 or Keene's Lake, Calais Aug 5 - Aug 9; rising grades 4-9; beginner class for children; promoting positive experiences on the water and while sailing. cobscookinstitute.org

Orange River Water Trail Boasts Paddling, Camping, Picnicing, and Wildlife Watching

By Downeast Coastal Conservatory

The Orange River Water Trail, located in the town of Whiting, is an easy to access, easy to paddle 9-mile flat-water trail including miles of fresh water teeming with wildlife. Paddlers have multiple access points and can begin their adventure towards the top of MCHT's Rocky Lake Preserve or by using the day use boat launch managed by IF&W at the end of Halls Mill Road to access Rocky Lake. Featuring miles of lakeshore, Rocky Lake is a fantastic place to load your canoe or kayak with camping or fishing gear and start exploring. Outdoor enthusiasts can extend their trip spending a night at one of the two reservable lakefront campsites or continue their journey portaging into Orange Lake for a day use picnic site provided by DSF or reserve an overnight stay at the Orange Lake Campsite, ideal for group camping.

The adventure can continue downstream through the Orange Lake Outlet and into the Orange River. The marshes and wetlands that fringe the river provide excellent habitat for nesting ducks, as well as beavers, muskrat, otters, mink and many other kinds of animals. The shoreline of the water trail has several designated day-use areas to enjoy picnicking, wildlife watching, and relaxing. DCC maintains paddle-accessed hiking trail leading to the summit of Estey Mountain, which offers stunning views of Roaring Lake and the surrounding wild landscape; and maintains two additional two established campsites on a first-come, first-serve basis. Paddlers can take out at Cobscook Shores' Reynold's Brook Picnic Area or continue to a hand-carry access point at Playhouse Lane.

The Orange River Water Trail is brought to you by a partnership of organizations including: Maine Coast Heritage Trust, Downeast Coastal Conservancy, Cobscook Shores, Downeast Salmon Federation, and Maine Dept. of Inland Fisheries and Wildlife. Access points to the Orange River Water Trail are on U.S. Route 1 about 13-16 miles east of Machias, Maine or about 3-5 miles west of Whiting, Maine. For more information, please visit: <https://www.orangeriverwatertrail.org/>



EASTPORT

SHACKFORD HEAD STATE PARK on Moose Island, the 87-acre state park occupies a peninsula separating Cobscook Bay and Broad Cove. The land is named for John Shackford, an American Revolutionary War soldier who once owned the headlands. The park is managed by the Maine Department of Agriculture, Conservation and Forestry. Offers hiking trails.

Raye's Mustard is North America's last remaining traditional stone-ground mustard mill. Four generations of the Raye family have been grinding mustard since 1900, when 20-year old J. Wesley Raye founded the business to produce mustard for Maine's burgeoning sardine industry

Festivals Eastport has a variety of festivals throughout the year including Independence Day "Old Home Week"; Pirate Festival, Salmon Festival, Downeast Pride, Mermaid Festival, Witches of Eastport and more. Check out the calendar of events FMI

Off Leash Dog Park Deep Cove Rd off Rte 190, the park is on the left before the entrance to Cony and Shackford Head State Park; waste station and users are required to pickup after use




Sculpture Trail "Nature's Grace," by Canadian artist James Boyd, is situated right along Water Street in downtown Eastport. It is one of a number of public art pieces along the waterfront.


Tennis & Pickleball Pickleball is the fastest growing recreational sport in the U.S. Eastport has a thriving community league with over 50 players; 14+ sessions a week offered at Eastport Elementary School; drop-in sessions several times a week at the new outdoor tennis and pickleball courts at Shead High School; visitors at all levels welcome; equipment to loan.

Eastport
Invites you . . .

to get out on the water, to delight in our many festivals & events, to shop & dine along our historic waterfront & to discover our rich history, nature & culture.



visiteastport.com



45th Parallel Marker A small roadside park found on US Rte 1 first marked the halfway point between the equator and North Pole with a brass pin in 1896, made by the Maine Red Granite Company in Red Beach, Maine. It was placed and dedicated in 1899, on the 4th of July, making it the first such marker in the U.S. Maine is just about in the middle since the 45 degree line (or 45th parallel) splits the state almost at its midpoint. Latitude is expressed in degrees, minutes, and seconds. Each degree represents about 60 nautical miles or 69 statute miles (our common land measure).

Food If you arrive in the "off" season, it can be hard to find restaurants open. Many places are seasonal and don't open until very late May. **The Farmers' Union** located at Perry Corner - 966 US Rte 1; open year round with a meat deli, beer, wine, fresh produce and other grocery. **The Polar Treat** is a seasonal A-frame building located 816 US Rte 1, famous for ice cream, but offer seafood takeout, burgers and more. **The Lobster Crate** located at 243 County Rd (the road headed through Sipayik), open for breakfast and lunch. **Mainly Smoked Salmon** has salmon sticks sold in a variety of quantity and flavors, salmon dip and more.

Quoddy Crafts crafts by local artists; funding goes to historical preservation efforts and the Border Historical Society; antiques; locally-made items at reasonable prices

Eastport Arts Center theater, art, music, film, education and community outreach; available for rental; an array of programs for children and adults. They collaborate with the Eastport Gallery; the Northern Lights Film Society; Passamaquoddy Bay Symphony Orchestra; Quoddy Voices and Stage East. Check out the concert series, seminars, Kinder Arts, ecstatic dance, yoga and much more, call (207) 853-4650 or visit: <https://eastportartscenter.org>

Overlook Park & Sutherland Amphitheater on Eastport's waterfront; where the Wilbur Theater once stood is a stone amphitheater that hosts musical and other events. The Park also makes a great place to sit and watch the workings of Eastport's Harbor, the waters of Passamaquoddy Bay, and Canada's Campobello Island, while enjoying a meal or snack purchased from a local business

Whale Watch or Day Cruise Eastport Windjammers offers whale watches, lobster cruises, deep sea fishing trips, private cruises; call (207) 853-2500 or visit www.eastportwindjammers.com

Water Taxi take a ride on the water, if the tide is up get dropped off at Treat Island, explore the trails and have a picnic.

Art Galleries Water Street has a robust arts scene, with over a dozen galleries to explore.

The **Barracks Museum**, moved from its original site, was one of the barracks buildings from Fort Sullivan.

Original site of Fort Sullivan, which was renamed Fort Sherbrooke by the British when they took control of it in 1814. In 1818, Moose Island, Eastport and the fort were returned to the US and it was once again known as Fort Sullivan.



Cony Park A large pavilion with picnic tables, outdoor musical instruments, horseshoe pits, and a hand carry boat launch



Passamaquoddy Cultural Heritage Museum photo

Waponahki Museum & Resource Center 59 Passamaquoddy Rd, (upstairs from the Si-payik Youth Center) Phone (207) 853-2600, ext. 227. Hours of operation 1 pm to 4 pm Monday - Thurs and every 2nd Sat; FMI visit www.wabanaki.com



Sunflowers at Gleasons Photo by Joan Lowden

Gleasons Cove Take US Rte 1, to the Shore Rd, to Gleason Cove Rd. There you will find a gravel beach, swing set, picnic area; Passamaquoddy Bay, including Gleason Cove, Western Passage, and Deer Island in New Brunswick, Canada. View traditional fish traps made of sticks and brush (herring weirs) that lead migrating herring along a maze-like fence into an enclosure, they are netted and transported to shore with small boats. The vertical sticks of the weirs still stand, but the weir may or may not be active, depending on the season, year, and the whims of the herring.

Romanticizing Rhubarb in Perry, Maine

The Rhubarb Festival is held the first Saturday of June each year at Kendall Farm in Perry, Maine. This year it will be held on Saturday, June 1, 2024 from 12:00 pm – 5:00 pm. The festival draws over 300 people each year interested in learning more about this versatile vegetable, rhubarb. The event offers demonstrations for caring for plants, harvest, preserving, and cooking. The event features lively music, local art and edible vendors, poetry, rhubarb leaf printmaking, and an obstacle course for kids of all ages. For more information about the rhubarb festival visit: KendallFarmCottages.com/RhubarbFestival or join our event on Facebook!

Rhubarb is hearty and has grown for centuries around the world. Many properties in Washington and Charlotte counties host perennial rhubarb plants. Rich with vitamins and fiber rhubarb stalks are packed with a healthy punch as an early summer source of freshness though its' leaves are poisonous. Contrary to popular belief red stemmed types are not necessarily sweeter because color and sweetness are not always related. This festival offers a variety of ways for attendees to learn to love rhubarb.



Think Pink Rhubarb Festival



Admission by
DONATIONS

Live local music by
OATMEAL BEAR

Cooking demos

Plant care & sales

Food & craft vendors

Stalk eating competition

Obstacle course & poetry

SATURDAY, JUNE 1, 12-5 PM

Kendall Farm, Perry, Maine

20 Kendall Lane (off Golding Road)



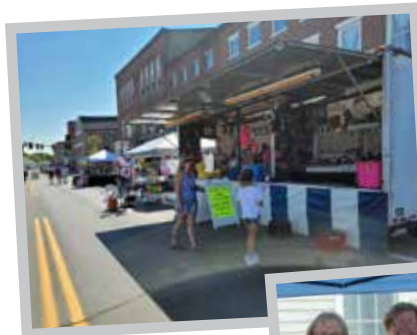
KendallFarmCottages.com/RhubarbFestival

No Pets. No Smoking. No Vaping.

International Homecoming Festival



The International Homecoming Festival celebration brings two international communities together. St. Stephen, New Brunswick, Canada and Calais, Maine, USA start the celebration with hands across the border, where the mayors of both communities and a small parade come together on the Ferry Point Bridge to shake hands. The first weekend in August, after New Brunswick Day, marks the beginning of the international activities. This sense of community began



Street Fair Vendors

with the first settlers. Even with Americans on one bank and Loyalists on the other, holding opposing sides during the Revolutionary War, the relationship has been successful for over two centuries.



Calais Lioness Superdraw during the Street Fair

International Frontier Week 1961, was the predecessor of today's International Festival, and it was a big deal. The first and only international election was held on the U.S.-Canadian border. Bob Treworgy, Calais, was elected to serve as mayor of the international community from June 30, 1961 to July 8, 1961. The program for Frontier Week is 100 pages long. The booklet listed nine days of events. It included messages of congratulations



The always popular Street Dance

from President, John F. Kennedy; Prime Minister, John Diefenbaker and other political notables. Original poetry in the program was interspersed with local histories, and advertisements from nearly every business in the area were included.

In present day, International Homecoming Festival is a five day event, celebrating on both sides of the St Croix River. The chil-



Fireworks Close Out the Festival

children's street dance starts on Wednesday night. The Peanut Fair is typically held at the Calais

Elementary School on Thursday afternoon. Concerts can be heard going both ways on the river. The Saturday Street Fair hosts many craftsmen, vendors, activities, a parade, craft shows, and so much more; ending with the spectacular Duty Free Americas, Hardwicke's Fireworks display.

Each year a small group of volunteers take on the challenge of planning the festivities, and raising the funds to for the activities. It is with support from our local merchants, civic groups, organizations and citizens that this festival happens.

2024 INTERNATIONAL HOMECOMING FESTIVAL
AUGUST 7-10 | CALAIS, ME | ST. STEPHEN, NB

What *to do* EVENTS & FESTIVALS

continued

continued from page 9

Campobello Island Fog Fest Aug 1-4; Campobello, NB. Five days free music performances, art and cultural events. Admission FREE; FMI visit <https://campobellofogfest.org>

Robbinston Days Celebration; Aug. 3, Robbinston Community Parade & Picnic

Mermaid Festival; Aug 3-6; Celebrate our creative connection to the sea with the 3rd Annual Mermaid Parade on Saturday August 3rd. Local artists will help you create mermaid attire, make sea creatures out of beach trash. The "Tales of Quoddy Bay" puppet theater returns, plus live music and more. Watch for details about parade float making workshops coming in spring. Even limited edition Mermaid mustard by Raye's Mustard for National Mustard Day! FMI: www.eastportartfests.org

Summerkeys Concert; free admission; Aug 7, 7:30 pm; Congregational Christian Church, Lubec, ME; Faculty Chamber Concert No 2 www.summerkeys.com

Peanut Fair and Doll Hospital; Aug 7, 4-6 pm, behind Calais Elementary School; plastic peanuts can be purchased and used for games to win prizes. Bring your sick or injured dolls and stuffed animals for the "doctors" and "nurses" at the Doll Hospital to make better. Sponsored by Calais PTO

50th International Homecoming Festival; Aug 7-10, Calais, ME and St Stephen, NB; Hands Across the Border, Street Fair; kids play day fun; International Street Dance for Kids, Calais City Building parking lot; Homecoming food and music festival (majority of restaurants in town will have live entertainment through the day); pre-concert fun in the Garcelon Civic Center parking lot including axe throwing; concert 9pm (doors open at 8); Coastal Link Trail International 15k challenge, marathon begins at Ganong Nature Park and runner will join the parade and end in Calais; parade; farmers market on the waterfront; pre-fireworks live show on the waterfront, music in St Stephen, NB; fireworks; Annual Battle of the NB Bands at the Garcelon Civic Center. FMI internationalhomecomingfestival.org

Lioness Super Draw; Aug 10, during the International Homecoming Festival Street Fair, Calais. Have many chances to win items, gift certificates, and cash donated by friends and local merchants. Tickets are sold all day at \$5 per sheet, with prizes drawn at 2 pm.

Passamaquoddy Ceremonial Days; yearly the 2nd weekend of Aug, Passamaquoddy Tribe Pleasant Point, Maine; ceremonial dance, canoe trips, crafts, demonstrations. Admission FREE; FMI call (207) 853-2600 or visit www.passamaquoddy.com

Summerkeys Concert; free admission; Aug 14; 7:30 pm; Congregational Christian Church, Lubec, ME; Andrea Maurer – Flute, Richard McIntyre – Piano www.summerkeys.com

Guided Pineo Peaks Trail Hike meet at DLLT headquarters; Aug 16, 9:45 -11:45 am. Free, no registration required; led by DLLT volunteer, Board member, and recreation enthusiast Lindsay Wheaton; the Pineo Peaks Trail explores a remote section of the Community Forest located entirely within ecological reserve. Your guide will lead you on a 1.3-mile hike (round-trip) up to Pineo Peak. The trail winds through mixed hardwood forest, climbing a ridge with partial views of West Grand Lake. Near the top, the trail forms a small lollipop loop, exploring unique geological formations of granite ledges, small crevasses, and extensive caves and rockfalls. FMI visit <https://downeastlakes.org/>

Machias Wild Blueberry Festival; Aug 16-18, Machias, ME; Battle of the Rim commemoration with the Machias Historical Society (featuring the Reenactors); 200 vendors, live play, parade, contests, activities; admission FREE; FMI call (207) 255-6665 or visit www.machiasblueberry.com

Downeast Fall Migration Birding Festival; Aug 16-18, celebrate the fall migration downeast, with expert local guides, this festival focuses on shorebirds, gulls and the migration. Local expert guides make this a wonderful and intimate festival; register at cobscookinsitute.org

Summerkeys Concert; free admission; Aug 21, 7:30 pm; Congregational Christian Church, Lubec, ME; Rachel Clemente – Celtic Harp; Andrea Hoag - Fiddle www.summerkeys.com

Taming the Wild Teaberry; Aug 22, 1-4 pm; meet at DLLT headquarters; Come learn about teaberry plants, how to extract the oils. Then head into the community forest to collect leaves to make oleo-saccharum, or flavored sugar. FMI visit <https://downeastlakes.org/>

LAMPS Summer Concert Series; Aug 25, 1-5 pm; Coast Variety Show and potluck; part of ARTwalk; Join us at Stockford Park for a variety show featuring local performers and a potluck picnic Stockford Park, South Water St, Lubec, Maine; FMI visit <https://www.lampsdowneast.org/event>

continued on page 40

Eastport Invites you

36th Annual Salmon & Seafood Festival
Labor Day Weekend, Aug 31-Sept 1, 2024

visiteastport.com/salmon

What Fishing and Hunting to do



Photo by Brewer Andrews

Down East Maine is well known for its great fishing and hunting - a true sportsman's paradise. Taking part in these activities require a license, but those are easy to get all over the state, from convenience stores to sporting goods stores and online.

The area boasts freshwater and saltwater fishing. With thousands of miles of river and streams and hundreds of

freshwater lakes in addition to the vast ocean, you can constantly find new places to fish and species to go after. The variety of fishing available Down East makes the sport easy for everyone in the family, young to old, novice to skilled because reeling in a wriggling fish on

the end of a line is a thrill enjoyed by all! No experience is necessary and local outfitters offer basic fishing gear and instruction to equip you and your family for a Maine fishing adventure. You can also hire a Maine guide for a guided fishing excursion, all your supplies are provided, and your only job is to dress warmly and be patient. There are numerous guides in the region, most operating as small independent businesses that offer highly personal, customized experiences.



Ice fishing is a great family fun activity for all ages! photo by Carrie Cropley

The Down East area is noteworthy because of the wide variety of angling experiences it offers. Anglers can choose among coldwater and warmwater fisheries in lakes, easily accessible and remote wilderness-type waters, wading or fishing from a canoe for wild brook trout in streams, as well as heading out into the ocean for saltwater catches. Numerous waters offer good fishing for one or more of 9 species of sportfish; landlocked salmon, brook trout, lake trout (togue), brown trout, splake, smallmouth bass, largemouth bass, white perch, and pickerel. The region boasts one of the top 10 salmon and togue lakes in Maine (West Grand Lake), one of the top 5 riverine fisheries for salmon (Grand Lake Stream), some of the very best smallmouth bass angling in the state, and the premier lake for whitefish in eastern Maine.

And when winter hits, there's no reason to put away your bait and tackle just because it's cold outside because in this area we love ice fishing as well. Spending time on a frozen lake with friends and family is one of the best ways to have fun and (hopefully) catch dinner in the winter. Ice fishing begins on Jan. 1 and lasts until March 31. Ice fishing derbies are a great way to see if you like ice fishing. Derbies are a fun way for the community to gather and enjoy all that winter in Maine can offer. Round pond in Charlotte was home to two derbies in 2024. In January the Calais Lions Club hosted a derby and in February the Calais Rod and Gun Club hosted a derby. Check their social media pages or websites for upcoming derbies in 2025, or the Maine Inland Fisheries and Wildlife website also has a page listing all derbies statewide.

Hunters are drawn to Down East Maine for its reliable, varied and superb hunt-



A little hunting pre Thanksgiving Dinner. photo by Carrie Cropley

ing. Moose, black bear, white-tail deer and wild turkey, snowshoe hare, ruffed grouse, woodcock, partridge and other game birds all call the Maine woods home. The area's untouched forests and thousands of acres of unpopulated terrain make it a dream destination for hunters and offer plenty of cover for some of the most desirable game on any hunter's checklist. The vast and varied terrain in Down East Maine provides a great opportunity to challenge any hunter's skills.

Staying overnight in a Maine hunting camp or cabin makes for a great getaway. Picture sharing stories around the campfire back at your cabin, a home cooked dinner after a day of hunting in the Maine woods. There are a variety of camp and cabin rentals near prime hunting grounds available Down East. Make sure to check the current hunting season and plan your trip accordingly. You can either travel the terrain on your own and test your luck or have a local hunting guide show you the best hunting spots. Whichever method you choose, this region is sure to offer excitement for all ages. For information on Maine's hunting season dates and bag limits visit the Maine Department of Inland Fisheries and Wildlife website.

For many that live in Down East Maine, hunting and fishing are simply activities of their everyday life. The way they spend time with family and friends and carry on time-honored traditions. For those visiting, it's a great way to simply relax and enjoy the great outdoors creating memories that will last a lifetime.

A Hidden Calais Treasure

By Kaileigh Deacon

Did you know that right in the middle of Calais is a National Historic Site? On the corner of Lincoln and North Streets is a little known spot called Meridian Park. Most would think it was part of the drive to get to the back parking lot of the recreation center or just a rocky hillside in the middle of town, but few know the location's historic significance.

At the highest point on the hill stand two granite stones that seem a bit out of place from the rest of the settings around them. The placement of the two stones is anything but accidental and has more thought put into the placement than anyone would realize. These two pieces of granite are actually platforms that at one time were used to hold astronomical equipment while taking measurements. The shorter of

the two stones is known as the transit stone, which is precisely located so that the sides of the stone align with the cardinal compass

points and the top of it would hold an astronomical transit. While the actual function of the taller stone, also known as the clock stone, was believed to have been the mount of a Hardy pendulum clock that was used by survey crews.

Meridian Park, as it has become known, is the name for the area surrounding the original site of the Calais Observatory, where astronomical work was done from a building that is no longer standing. When the telegraph established the first transatlantic means of communication, astronomers were able to finally



of accurate longitude lines could mean the difference between getting home and getting lost, especially for a fisherman on the ocean.

With the observations made in Calais, it helped establish Greenwich, England as the base for setting all longitude distances worldwide. This often overlooked historical site in the center of town has played an important part in not only the history of Calais, but helped shape something that is felt worldwide. At the time it was believed with the measurements taken that December in 1866 that Calais was then the most pre-

establish more concrete longitude lines. The importance

cisely located place in the United States.

In 1998 the large granite stone was found toppled and out of place, and thanks to a group of volunteers and the St. Croix Historic Society, it was moved back to where it was historically located. The site has also had several clean-up days over the course of the years, where volunteers worked together to clean up the park and beautify the historic spot.

With all the history, it wasn't until 2012 that then-city manager Jim Porter was able to get the site declared as a historic landmark and put on the National Register of Historic Places. Seven years before that, in 2005, the very first "Preservation Partnership" disk was placed on the top of the hill. The disk marks the Calais Observatory as part of the National Oceanic and Atmospheric Association (NOAA) Heritage Trail.

Princeton Maine Prisoner of War Camp

By Kaileigh Deacon

It's a lesser known fact that during the later years of World War II a Civilian Conservation Corps Camp in part of Princeton and what is now parts of Indian Township was repurposed into a Prisoner of War Camp. The need for POW camps for the Allies hadn't been a problem as they struggled to gain the upper hand in theater. It wasn't until they entered the African Theater that things changed. With significant victories in Africa German forces retreated leaving an estimated 134,000 soldiers who became prisoners of war.

The question of what to do with these POWs was solved when many were brought over to the United States. Senator Margaret Chase Smith proposed the men be brought to the now all but abandoned CCC Camps and their labor used to replace that of men who were now fighting overseas. These POWs were to work on farms and at logging camps across the state.

Prisoners for the Princeton Camp arrived by train in Woodland (Baileyville) taking two cars to deliver 286 German Prisoners. They were unloaded while students and townspeople watched while a roll call was taken and they were loaded into trucks before being driven to the camps. Prisoners were trucked from the site in Princeton to logging sites in Grand Lake Stream.

Treated well, prisoners and those in charge of the camps had a good working relationship and there was little conflict at the sites. Despite the lack of conflict



Photo courtesy of St Croix Historical Society. Above is a rare photograph of prisoners at the camp in Princeton. Taking photographs of the camps, its prisoners or the guards was strictly verboten and few photos survive. The locals were somewhat ambivalent about their new neighbors-some were, in the beginning, overtly hostile but most were simply curious. according to Jocelyn Curtis info to the Historical Society.

there was a Prisoner Escape from the Princeton site that led to multiple escape attempts from both the Crawford and Topsfield Sites where Prisoners were working totaling six prisoners. This was not the first escape attempt but the longest and the one that led the prisoners the furthest from their originating work sites.

SHERWIN WILLIAMS.

Calais
305 North St.
(207) 454-7518
Calais, ME

Sunrise Canoe and Kayak ~since 1996~

Canoe the lively St. Croix River or sea kayak historic Machias Bay!

- Half and full day trips led by master Maine guides
- Beginners, families, and large groups welcome

Book your adventure today!
207-255-3375 ★ 877-980-2300
www.sunrisecanoeandkayak.com
@sunrisecanoeandkayak
168 Main Street, Machias, ME



Passamaquoddy Chief Joseph Nicholas and the Indian Motorcycle from St. Croix Historical Society

When Joseph Nicholas turned 30 in 1925, he was elected Chief of the Passamaquoddy Tribe, a singular honor for one so young. He held the position for five years and for a dozen additional terms until his death in 1948. Nicholas's wife Margaret lived well past 100.

In their younger days, they would often travel to fairs in Massachusetts to demonstrate the art of basket making. It was at one of these fairs that Nicholas was noticed by representatives of the Indian Motorcycle Company of Springfield, Massachusetts.

In 1922, the Indian Motorcycle Company was developing a new model to be called the Chief. They were so impressed by Nicholas's profile that they asked him to pose for the motorcycle's logo which is why he, also known as Chief Leaping Deer, came to travel the world over on one of the most famous motorcycles ever made.

DREAM FIRST



We live by a simple idea, and hope you do too: Dream First, then go from there.

Because you can.



Find us on Facebook!

A Division of The First Bancorp • 800.564.3195 • TheFirst.com • Member FDIC

ENTREPRENEURS

**2025 IS THE
"NOW" TO YOUR "DREAMS"**

...to have your own business?

...to enjoy a more relaxed lifestyle?

...to shed the stress of urban living?

...to live in a beautiful environment?

If your answer is **"YES"** then give us a call.

UNLOCK YOUR POTENTIAL
with a team that is passionate about your success



DOWNEAST
economic development.

Calais, ME
Baileyville, ME
ewced@outlook.com
207.214.5926

**OPEN YOUR
BUSINESS**

Native American Culture In Down East Maine

By: Richard Auletta

Many people are fascinated by the culture of the Native American peoples. It is often assumed that such cultural diversity is found primarily in the American West. You may be surprised to know that the state of Maine has a rich history of Native American heritage and culture, and that Way Down East is host to a large part of that heritage.

The Passamaquoddy nation has two geographic concentrations, one a short drive north of Calais, near Princeton, and a second a short drive south of Calais, near Eastport. Both offer colorful festivals, and both have museums of Passamaquoddy culture, history and heritage, including collections of Passamaquoddy baskets. The



Photo courtesy of Passamaquoddy Cultural Heritage Center.

Passamaquoddy nation is also known for its remarkable skills of canoe and wigwam construction. The canoes are built from birch bark, and are completed without the use of nails.

The Pleasant Point Passamaquoddy nation reservation, known as Sipayik, is situated between Perry and Eastport. Its museum is called the Pleasant Point Museum. It contains numerous exhibits about Passamaquoddy history and Passamaquoddy crafts, including the famous Passamaquoddy baskets. Phone the museum's director at 207-853-2600 to schedule a time for a visit. The museum is open on request.

Just north of Princeton lies Indian Township, its museum located on Rte 1 is called the Indian Township Museum or Passamaquoddy Cultural Heritage Museum. This museum as well offers

exhibits about both Passamaquoddy history and Passamaquoddy basket-making and other crafts. This museum is open by appointment. Phone 207-796-5533 to set up a time for your visit.

Indian Day celebrations take place at both reservations each summer and offer opportunities to observe

colorful Indian dancing, Native American crafts, and the chance to sample Native American foods. Spend an afternoon – or a day -- to get to know the

fascinating and educational cultures of the Passamaquoddy nation, which has resided in this region for more than ten thousand years, at least ten times farther back in time than the appearance of any Europeans.

Native American crafts can be purchased at a number of stores, museums and events, including Indian Ceremonial Days and



Joan Dana and Blanche Sockabasin, Ceremonial Blessings for the Water. Photo courtesy of Passamaquoddy Cultural Heritage Center.



Walter Sockabasin with Head Dress, Ceremonial Days. Photo courtesy of Passamaquoddy Cultural Heritage Center.

Pleasant Point Ceremonial Days during the summer months and at the Wabanaki Museum, 39 Union Street, Calais,



THE trails HIKING

PERRY

The 1.8-mile [Sipayik Trail](#) extends across the Passamaquoddy Native American reservation at Sipayik, (also known as Pleasant Point), Maine. The paved trail overlooks scenic views at various points as the river watershed transitions to salt marsh and then to Passamaquoddy Bay.

Access to the [Lincoln Cove Preserve](#) is via Birch Point Road. From U.S. Route 1 southbound just past the Perry Town Office, turn left onto Cannon Hill Road. After 1.6 miles, turn right on Birch Point Road, and continue 0.9 miles. The property is on both sides of the road, with limited parking and an informational kiosk on the right, just across from the woods road that leads left to the shore. There are no formal trails.

Explore [Sipp Bay's](#) 1.5 miles of trails, a short loop in the south and a longer, more forested excursion to the north. Both offer great views of the rugged coastline. Access to the preserve by taking US Route 1 in Perry to the Burby Road. Follow the Burby Road 0.75 miles onto the peninsula.

BARING

[Moosehorn Wildlife Refuge](#) is home to five hiking trails with access on Rt 191 in Baring, have narrow footpaths that are minimally maintained. Bring a map and compass while exploring trails because they can be difficult to follow at times. FMI www.fws.gov/refuge/moosehorn

[Woodcock Trail](#) 0.3 miles; a short paved loop trail; handicap accessible, This trail has a particular focus on the requirements for the protected American woodcock.

[Greg's Pond Trail](#) 1.0 mile; trail contains grassy pathways and elevated wooden walkways for wet areas; trail passes by Greg's Pond, great for wildlife viewing. The low canopy and overhanging brush will be sure to keep you cool.

[Charlotte Trail](#) 0.7 miles; a short path through flowering fields and forest. This trail can be a loop or connected with other nearby trails.

[Raven Trail](#) 1.4 miles; this moderate trail has hilly terrain, high dense canopy cover,

and a dense understory. This is a great option if you're looking for something more than a brisk walk. Schedule: open year-round, some activities are seasonal; hours: daily from 1/2-hour after sunrise to 1/2-hour before sunset; FREE; pets welcome; (207) 454-1700

[Conic Trail](#) 3.4 miles; back trail located in Baring, take Rt 1., to Rt 191, look for Moosehorn National Park trail signs on the left

GRAND LAKE STREAM

[Little Mayberry Cove Trail, GLS](#) - mossy, single-track trail; approximately 2.5 miles along the western shoreline of West Grand Lake. Trail begins at the dam at the head of the Stream. Walk a short distance along the gravel camp road and follow the trail over moderately rolling terrain, with occasional viewpoints along the shore ending at a quiet cove. Hikers can return on the same trail, or loop back via interior logging roads.

[Pocumcus Lake Trail](#) - Trail provides options for short or moderate loop hikes to undeveloped shoreline of Pocumcus Lake. Shorter loop is 1.3 miles round trip, while those who hike the entire trail cover 3.6 miles. The trail traverses a wide range of forest habitats. Hikers can expect to hear a variety of songbirds and loons as they approach the lake. The trailhead is located on the north side of the Fourth Lake Road about 7.5 miles west of Grand Lake Stream.



Wabassus Mountain Trail - 1.0 mile climb to the summit, the Wabassus Mountain Trail follows a small cascading seasonal brook, and passes through forest. The trailhead is on the Wabassus Mountain Road, with access from the north via the Fourth Lake Road, or the south via the Little River Road and Third Lake Ridge Road.

Dawn Marie Beach Path - DLLT's shortest trail at 0.25 mile: path leads you from a raspberry patch by the side of the road to an undeveloped beach on Wabassus Lake. It's a great spot for a family picnic, or to cool off if you worked up a sweat on the way up Wabassus Mountain. Even here, a completely undeveloped sand beach is a rare commodity. Take the Fourth Lake Road west from Grand Lake Stream for 3.6 miles, and turn left on the Wabassus Mountain Road. Pass a side road on your right, and then look for the trailhead sign on your right.

Storybook Trail - Leaving from DLLT's future headquarters at 214 Milford Road, this 0.6-mile trail winds through a cedar-filled forest with wooden signage along the trail that depicts children's stories that tell of the natural and cultural history of the region. Be sure to visit multiple times, as the stories change throughout the year. The trail intersects at the Tower Hill Trail, forming a 3.5-mile loop option from the heart of Grand Lake Stream.

Tower Hill Trail - Located atop Tower Hill, the Grand Lake Stream fire tower was built in 1934, and is the oldest enclosed wooden fire tower remaining in New England. DO NOT attempt to climb the tower, due to

safety concerns. Parking is at the West Grand Lake Dam. Follow the snowmobile trail (orange tags) east, as it winds up the hill. From the tower, the trail begins 100 yards to the north, and heads east, winding 1.1 miles through mixed woodlands to Bonney Brook Road. After crossing Bonney Brook Road, the trail meanders along shallow Bonney Brook Lake. Upon reaching the road again, turn right and follow the road for 50 yards, then turn left, continuing along the trail. The trail ends at a camp road called "Pappy's Way." Turn left and follow the snowmobile trail back up Tower Hill, creating a 3 mile loop.

Trail to Tomorrow - Inspired by a 1957 essay by John R. Schaefer, an interpretive and educational walk through several distinct forest types. A round-trip loop of 0.6 miles, leaves from the end of Tough End in the village of Grand Lake Stream (parking is available at



Students from Lee Academy breaking the new trail at Horseshoe Lake.

the West Grand Lake Dam).

Musquash Esker Trail - located on the north side of Milford Road, roughly 5.5 miles east of Grand Lake Stream; from the parking area, travel along the former "Talmadge Road," built along a glacial esker, 1.4 mile (2.8 round trip) trail ends at Big Musquash Stream, and offers gorgeous views of Amazon Mountain and more than 5,000 acres of pristine wetlands.



THE trails HIKING

Dobsis Narrows Trail - Located in Lakeville, this hiking trail follows the shore of Sysladobsis Lake and ends at a campsite. Future plans include extending this trail to loop back to the road, but it's currently an in-and-out 0.3 mile hike. Recreationists will have almost 360° views of the lake, and will likely hear loons calling.

Horseshoe Lake Trail - turn off the East Shore Rd in Lakeville onto West Shore Drv, and park at the intersection with Horseshoe Lake Rd.; a boat launch for Horseshoe Lake is under construction. Follow the launch path and begin hiking on the west side. This easy-walking trail parallels the pristine lake and then cuts back to the Horseshoe Lake Road. Hikers will find two benches for resting or lunch along the trail. Trail length is 0.4 miles one-way.

Pineo Peaks Trail - a remote section of the Community Forest located within ecological reserve. Head north on the Amazon Road for 8 miles, turn left onto the Pineo Point Road and drive for 1.6 miles. There are two trailhead access points from the parking area. The left trailhead leads to a 1.3-mile hike (round-trip) up to Pineo Peak, climbing a ridge with partial views of West Grand Lake. You can explore unique geological formations of granite ledges, small crevasses, and extensive caves and rockfalls. The right trailhead leads to the lake. It parallels the shore for 1.6 miles, crossing Oxbrook Stream, and ends at the Princeton Island campsite.

EASTPORT

Located between Eastport and Lubec; **Treat Island** is a 1.2 mile network of trails; monument where American Revolutionary War Col. John Allan is buried; both Lubec and Eastport have municipal boat ramps, which offer all-tide access for hand-carry and motor boats. Small boats can land easily on the island's southern shore on either side of the dike between Treat and Dudley Islands. Despite close proximity, access from both Lubec and Eastport is made challenging by very strong currents and an average 22 foot tides in this part of Passamaquoddy Bay.

Matthews Island is a short trail that leads across the island, accessed via a right-of-way that begins at the end of Deep Cove Road. The right of way leads through private property and over a bar to the island (exposed at low to mid tides). From the intersection of Route 1 and Route 190 in Perry, take Route 190 for approximately 5.5 miles into Eastport. Turn right on Deep Cove Road and continue 1.6 miles. Park at the end of the tar road on the right. Follow the gravel drive 0.2 mile to the footpath that leads through the field to the exposed bar. Please respect the privacy of the landowners, stay on the path, and do not dawdle on your way to the island. Access to the island is also possible from the water, with the ideal landing spot on the southern side of the bar that connects Matthews with tiny Sumac island.

CALAIS

Magurrewock A few miles north of the refuge headquarters on the outskirts of Calais is Magurrewock Mountain, a 384-foot peak accessed by a one-mile trail. To the south, Bells Mountain and Crane Mountain in the Edmunds unit of the refuge offer two fun loop hikes just shy of a mile each.



Devil's Head Conservation Just off Rt 1 in Calais, the 315-acre conservation has approximately three miles of moderate foot trails, a dirt road loop running from the road to the waterfront. Devil's Head itself is a 340-foot-high granite cliff overlooking the St. Croix River. Schedule: April - October; hours: sunrise to sunset; FREE; Pets: Welcome; (207) 454-2521; calaismaine.org/devils-head

PEMBROKE

Hersey Point Preserve 1.5 miles, Round Trip; moderate; a 28-acre preserve on the peninsula separating Hersey Cove from the Pennamaquan River offers a short hike through woodland to a quiet, sheltered cove and gravel beach, with a spur leading to a nearby point; trail entrance ; (please stay on trail) to enter a mixed oak-aspen-spruce woods; FMI visit www.nature.org

CUTLER/TRESCOTT

Bog Brook Cove Directions: take Rte. 189, continue 1.1 miles on the road, go straight at an intersection with Bog Brook Road, near the midway point. Moose River Road ends at the parking area. Use this lot to access the universally accessible trail, the beaches at Moose Cove, the Chimney Trail, and the Ridge Trail; features gravel and cobble beaches, breathtaking views of the Bold Coast and universally-accessible trail; FMI or a printable map visit <https://www.mcmt.org>

LUBEC

Located directly along the South Lubec Road, the **Alan Brooks Salt Pond** provides a scenic view of Lubec Channel as well as two intriguing tidal salt ponds. Approximately half of the 4.4 acre property is composed of Spartina saltmarsh which is a rare natural community type in Maine. This preserve was acquired with the support of the Land for Maine's Future program in 2008. Directions: Take US Route 1 and turn right on State Route 189 East. Follow Route 189 east approximately 10 miles to South Lubec Road. Turn right onto South Lubec Road and in 0.6 mile, the destination will be on the left.

Klondike Mountain take US Rte 1 to Rte 189, leading to Lubec, after 9 miles, turn left on the North Lubec Rd at McFadden's Variety, go 1 mile to the Klondike Mountain Preserve sign on the left and park in the parking area. Bald nubble summit with a 360 degree view of the surrounding bay and landscape; 46-acre preserve, originally owned by a local family which raised dairy cows

and apples in the surrounding pasture near the base of the mountain. The name of the mountain references the story of two men (1897) devised a scheme claiming that they could extract gold from the nearby seawater, the men worked as con artists who — after hiring hundreds of workers and collecting funds from investors — fled the area never to be prosecuted for their deception.

Cobscook Shores free public access, Huckins Beach Trail; Old Farm Point Shorefront Park; Reynold's Brook - Orange River Wildlife Preserve and Paddle; Whiting Bay Beach Picnic and Paddle; Race Point Meadow and Reversing Falls Trail; Morong Cove Picnic and Paddle; South Bay Narrows; Black Duck Cove; Pike Lands Cove Crescent Beach and Lagoon; Denbow Bluffs; and more; privately owned by Cobscook Shores Inc., a family funded Maine charitable foundation. FMI and maps visit cobscookshores.org

Boot Head, Lubec Directions: take South Lubec Road toward Quoddy Head State Park and bear right in 2.7 miles onto Boot Cove Road. Travel 3.9 miles to the parking areas on both sides of the road and the trailhead on the left; 2.0 miles; catch the sun rising over the Grand Manan Channel; terrain is level in the beginning; head across the bog bridging to a viewpoint of the bog on the right; approach quietly and remain alert for spruce grouse in this area. Ahead reach a junction and the start of a loop. The turn left leads to Boot Cove, a wide cobble beach (please respect the privacy of our neighbor, who owns the northern part of the beach)

Quoddy Head State Park 5.5 miles of groomed hiking trails, a candy-striped lighthouse (schedule in calendar of events) 9am to sunset; FREE; Pets: Welcome; (207) 733-0911

Pike Lands take US Rte 1 to Lubec, after 9 miles, turn left on the North Lubec Road at McFadden's Variety, go 5 miles to the Downeast Adventures sign (on the right) near the end of the paved road, park past the sign on either side of the road; two open-access properties along the North Lubec Rd; at one time the entire property was owned by esteemed naturalist Radcliffe Pike who planted an eclectic variety of horticultural plants now featured as an educational arboretum. The two properties also include a total of 1.5 miles of hiking trails which traverse a unique variety of plant, bird, and wildlife habitats as well as a sandy beach. This preserve was acquired with the support of the Land for Maine's Future program in 2005.

ROBBINSON

Shares a trail system weaving through forests and lakes with Calais. Check out the information on the clubs on page 22.



BEALS

Great Wass Island Preserve A 4.5-mile trial system; unique forests and wetlands, exposed granite bedrock drops steeply into the sea, giving evidence of the "Fundian Fault," a long crack in the Earth's crust that extends from the Bay of Fundy to the coast of New Hampshire. Due to the extent of exposed bedrock and uneven terrain, the trails may be difficult or even dangerous in bad weather. Hikers should be particularly careful when hiking in dense fog—a frequent feature of the preserve. Please come well prepared for any kind of weather, and be sure to wear sturdy shoes suitable for a long hike through all kinds of terrain. Due to the terrain, your hike will take you longer than you think—you should allow yourself six hours to complete the full 4.5-mile loop. Visiting Guidelines: day use only, no camping, no fires, carry out all trash, leave no trace, bikes and motorized vehicles prohibited, no pets, stay on the trail

Little Cape Point Trail (2.2 miles): leads to the shore at Cape Cove and Little Cape Point. It winds through deep moss-floored spruce and fir forests interspersed with open ledges of jack pine woodland. After about a mile, these ledges offer beautiful views of a coastal raised bog. Further on, a boardwalk allows the visitor to walk through a sedge-shrub marsh without harming the vegetation. After the trail reaches the shore, it is just a short walk northeast along the shore to Little Cape Point (3-hour round trip).

Mud Hole Trail (1.2 miles): The left fork 100 feet east of the parking lot leads to the edge of a long, narrow, fjord-like tidal cove known as the Mud Hole. From there the

trail winds east to Mud Hole Point, where it intersects with the Shoreline Trail.

Shoreline Trail (1.1 miles): Hike along pink granite cliffs that are exposed to the waters of the Gulf of Maine. This trail offers spectacular views of the islands of Eastern Bay. Just northwest of Little Cape Point, the trail takes you along a cobble beach formed by the force of the ocean. Shoreline Trail intersects the Little Cape Trail on Little Cape Point. Note that the trail is directly on the coast and is not blazed.

CAMPOBELLO

Herring Cove Provincial Park NB Canada; includes six unique trails of varying length, a campground and golf course. (see more detailed info and map in the camping section)

Roosevelt Campobello International NB, Canada; park opens in May.

Fox Farm Loop 1.8 mi, coastal / lighthouse views

Raccoon Beach-Liberty Point Loop 4.7 mi, numerous narrow foot bridges; views from Liberty Point; blazed, flat, easy trail

Customs House Trail 1.7 mi, easy route, takes an average of 36 min to complete

Raccoon Beach-lower Duck Pond 2.4 mi, out-and-back trail; easy route; 49 min

MACHIAS

Machias River Preserve 5.5 -mile trail network of interconnecting hiking trails that provide scenic and recreational access to the river as well as the Down East Sunrise Trail; managed as a community forest with the goal of balancing low-impact forestry, outdoor recreation, wildlife habitat, educational opportunities, and river protection; parking: Rte 1A in Machias, 0.5 mile south of the Down East Community Hospital and the second is on Rte 1A in Whitneyville, about 0.3 mile north of the bridge over the Machias River. From the Sunrise Trail, ATVs and snowmobiles will find small parking areas where the Homestead Trail and Hemlock Trail intersect with the Sunrise Trail. As well as a large parking area across the trestle bridge in Whitneyville.

Machias River Walk an easy 5-6 miles long gravel path along the Machias River used by hikers, cyclists and mostly four wheelers.

What to do CAMPING & PADDLING

Famous for its rocky shores and numerous bodies of water, Maine is a haven for canoeing, kayaking and paddle boarding - all activities that go great with camping in the vast outdoors of Maine.

MARION TOWNSHIP

Rocky Lake Public Lands has eleven primitive campsites; South Bay on Rocky Lake, two sites can accommodate medium RVs and two are walk-in tent sites (there are additional walk-in sites at Mud Landing). Water-access sites include: Loose Rock (a lean-to), Eagle Ledge (on Second Lake); Lower Riffles (E. Machias River); West Beach, Piney Point, and Rocky Lake Island; hand-carry boat access point at South Bay; parking for six cars at South Bay, and two cars at Mud Landing

BAILEYVILLE

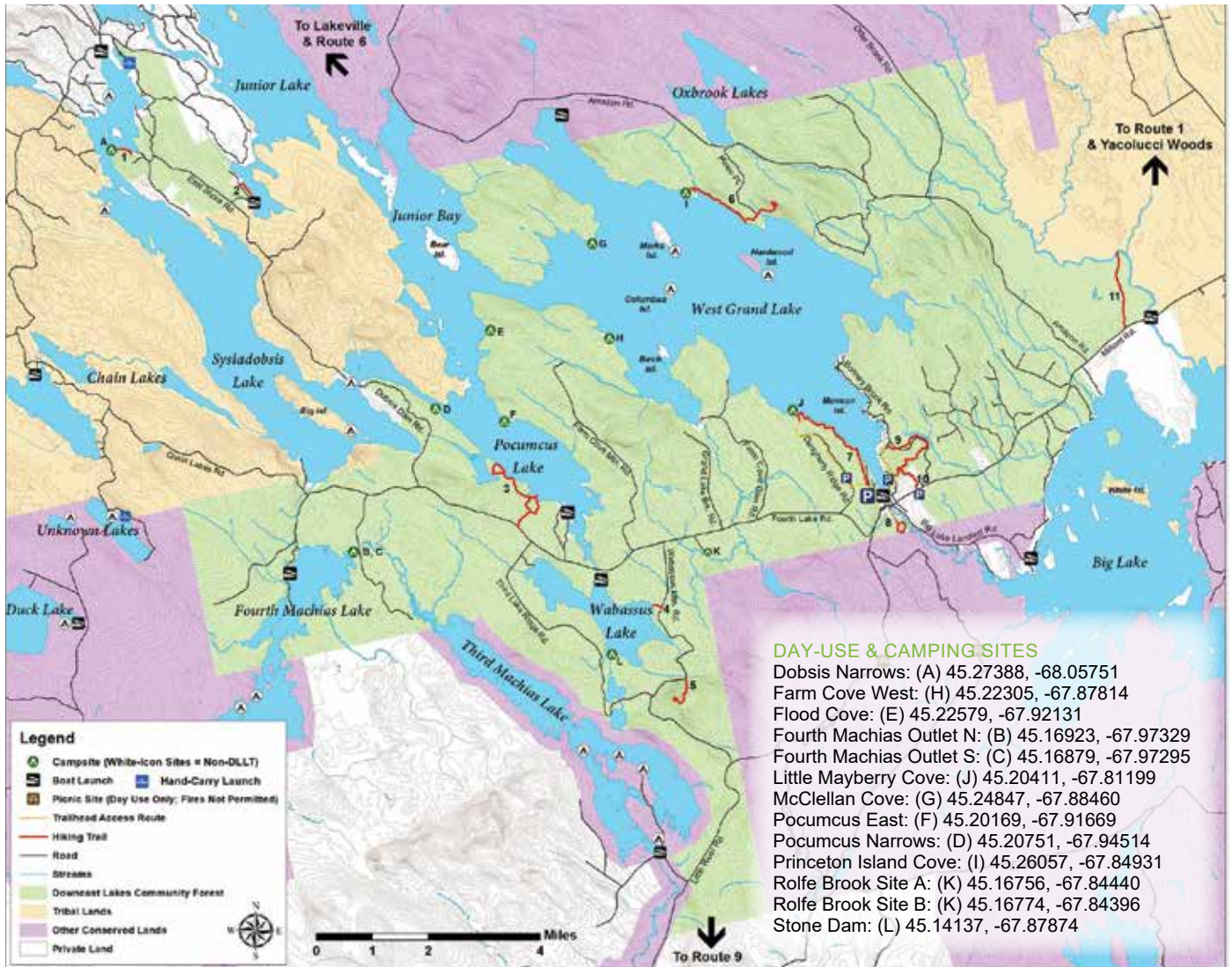
The St Croix River has a long heritage and serves as the narrow international boundary between Canada and the US. The area of interest to most canoeists is the 33 mile wilderness from the control gate at Vanceboro, ME and St Croix, NB to the Grand Falls dam. Class I and II rapids, with one Class III pitch. There is some flatwater. Since the flow is controlled, it is easily paddled from May until Oct. The flow is determined by a system of dams and rainfall. Water levels are monitored

CALAIS

Keenes Lake Family Campground 10 miles from Canadian Border, crystal clear lake. RV storage, access to ATV trails, cabin rentals, large wooded and private sites, boat ramp, open water kayaking, hiking trails. boat rentals, arcade, themed weekends, activities, pancake breakfast, pets welcome. 70 Keenes Lake Rd., Calais FMI (207)454-2022 or Facebook page.

GRAND LAKE STREAM

Downeast Land Lakes Trust has eleven water-accessed sites on several area lakes and streams. Two sites on Rolfe Brook are drive-up only, about four miles west of town, both are available for day-use and camping. Each site has a privy and picnic tables. Camping at DLLT sites is free, available on a first-come basis; three -night maximum stay. Campfires are allowed with a permit from the Maine Forest Service at (207) 827-1800. See map below.



CAMPOBELLO

Herring Cove Provincial Park 136 Herring Cove Rd, Welshpool, NB Canada; accessible by taking two ferrie or alternatively by driving through Maine six unique trails of varying lengths; Camp by the sea at Herring Cove Provincial Park. The campground offers 88 campsites (40 with electricity) and five rustic shelters; fire pits, restrooms, picnic tables, kitchen shelters and playgrounds are all available on-site. The park also features a 9-hole golf course with pro shop. FMI call (506) 752-7010 or email ac.bng@skrapbnsrap

Rock of Gibraltar 1.24 mi. (linear length); easy; a large boulder was left along this trail over 10,000 years ago. It's no wonder U.S. President Roosevelt had a tea house nearby on Glensevern Lake.



Adams Estate Promenade 0.62 mi. (linear length); intermediate; the forest trail is part of the original Adams Estate (1914 to 1997). The trail passes a small man-made pond. Its ice was used for refrigeration in ice houses during the summer.

Herring Cove Loop 2.914 mi. (loop); intermediate; short gravel road passes through a spruce forest and leads to Herring Cove beach, passing a secluded picnic area whose presence is indicated by a sign in the shape of a teddy bear (teddy bear was Theodore's nickname Roosevelt).

Herring Cove Beach 1.116 mi. (linear); easy; at low tide explore this expansive beach that changes from sand to baseball-sized rocks across its 1.2-mi. length. At high tide follow the grassy edge of Glensevern Lake

Carriage Road 1.302 mi. (loop); intermediate; the old carriage and logging road travels through a moss-laden forest and near streams on the way to Herring Cove Beach.

Eagle Hill Nature Trail 0.46 mi, wide boardwalk; travels through Eagle Hill Bog

Lake Glensevern 0.93 mi. (linear); intermediate; the Roosevelt family used this old carriage road



to access a tea house on Glensevern Lake near Herring Cove. The spruce forest transitions into a hardwood forest before reaching the lake.

Eastern Head Cove Trail 0.434 mi. (linear); intermediate; continue past the lookout platform and walk on an old road until you descend down to the gravel beach at Eastern Head Cove.

Friars Bay 0.372 mi. (linear); intermediate; short trail starts at a man-made pond and travels through a mature spruce forest. The trail cuts a deep path through the moss as it accesses the historic Roosevelt estate.

ALEXANDER

Pleasant Lake Campground is located halfway between Bangor ME and Saint John, N.B. Canada. Family camping with planned activities, swimming and boating, sandy

beach, playground, large pull through sites. 50 amp. 371 Davis Rd , Alexander; (207) 454-7467

DENNYVILLE

Cobscook Bay State Park is surrounded on three sides by the salt waters of Cobscook bay has over 100 campsites, The name Cobscook comes from the Indian word meaning "boiling tides." The average tide is twenty feet. At low tide, adventuresome campers may dig for soft shell clam. (207) 726-4412

CUTLER

Cutler Coast Public Reserved Land (also known as the Bold Coast) has three designated tent sites near Fairy Head, and you'll have to hike four to five miles to reach them. It's worth it, though, because the trails that snake alongside Cutler Coast toward the campsites cover some pristine territory.



What *to do* EVENTS & FESTIVALS

continued

continued from page 28

Summerkeys Concert; free admission; Aug 28, 7:30 pm; Congregational Christian Church, Lubec, ME; Peter Lewy, Cello, Richard McIntyre, Piano www.summerkeys.com

SEPTEMBER

Salmon Festival; Eastport; yearly on Labor Day Weekend; 10-4 pm salmon dinner, craft beer; Historic Downtown Eastport. Local seafood with vendors, events and food. Admission FREE. 207-853-0800; www.eastportchamber.net

Lubec Pirate Invasion; Saturday of Labor Day Weekend. An annual duel over the best of pirates and plunder. Pirates from across the country arrive by land, sea and air. Admission FREE; FMI visit www.visitlubec.com

Eastport Pirate Festival; yearly the weekend following Labor Day; downtown Eastport, Maine. Fun family weekend of pirate activities on the waterfront. Admission FREE. FMI www.eastportpiratefestival.com

LAMPS Summer Concert Series; Sept date TBD, 1 pm; after the Lubec Pirate Invasion for some good ol' fun at Stockford Park. Performers to be announced; South Water St, Lubec, Maine; FMI visit <https://www.lampsdowneast.org>

Harvest Fair & Fiber Festival; Sep 14, 9am-4pm; Machias Train Station and Pellon Center, Machias. Vendors, food, farmers market www.machiaschamberofcommerce.com

Fall Festival; Sep TBD, 12 - 4pm, experience Cobscook Institute's campus, and explore homeplace activities; cider pressing, tasting, fiber arts, group projects, live music; FMI cobscookinstitute.org

Common Ground Fair; Sep 20-22, gates open each day at 9 am; Unity, Maine; Vendors open until 6 p.m. on Friday and Saturday, 5 p.m. on Sunday.

Apple Fest; Sep, 8am - 2pm; St. Anne's Episcopal Church, Calais, ME. Breakfast, pies, jellies, crafts. Admission FREE; TBA, FMI visit stannescalais.org

OCTOBER

Baileyville Octoberfest; first weekend in Oct; Baileyville; arts, crafts, food vendors, adult & childrens' activities and demonstrations

Annual Perry Harvest Festival; Oct TBA; Perry, ME; fair w/ over 90 vendors; arts, crafts, farmer's market, live entertainment; check Perry Harvest Festival on Facebook

Scarecrow Contest; Oct, Main Street, Calais, ME. Main Street poles will be decorated with scarecrows for your viewing and photo taking fun. Admission FREE. Sponsored by Calais Downtown Revitalization Coalition

Black Magic Bash; Oct TBA; Halloween custom party at the Calais Motor Inn, Calais, Maine; hosted by the Lioness Club; admission will be donated to local charity

Witches of Eastport; Oct 26; The ArtWalks announce the return of Witches of Eastport with all-ages interactive experiences. Pumpkin carving, wizard hat and wand making, witch and warlock costume parade, Quidditch broom decorating, Harry Potter Sorting Hat team challenge for kids, pumpkin derby race, and more! www.eastportartwalk.org

Trunk or Treat; Oct. TBA, Walmart, Calais, Maine; before dusk.

Auto Fall Foliage Tour; Oct; Moosehorn Wildlife Refuge, Charlotte Road Entrance, Baring, ME. Look for signs that say Auto Foliage Tour is open. Admission FREE. (207) 454-1700; www.fws.gov/refuge/moosehorn

NOVEMBER

Harald Saeverud Music Program; Fall/Winter Event; held in Nov/Dec each year; Events held in Machias, Eastport and Calais. FMI see www.hsmusicprogram.com

Community Tree Lighting / Shop Small Saturday; the Saturday after Thanksgiving, 10 am - 5 pm, Calais; St Croix Valley Chamber of Commerce event; shop local promotion; tree lighting in Triangle Park at dusk with carolers, hot chocolate and more.

DECEMBER

Lioness Christmas Parade & Moonlight Madness; the first Friday of Dec; Main St., Calais, ME. Christmas parade starts at 6 pm, shops open late, specials throughout town. Admission FREE.

New Year's Eve events posted in January.

**Lioness Christmas Parade
in Calais is
always a
family fun
event to kick
off the season!**





Spednic Lake, a lake in the Chiputneticook Lakes chain along the Canada – United States border between the state of Maine and the province of New Brunswick. photo by Emily Ruttan

Camp the International Waterways - St. Croix

The St. Croix International Waterway Commission maintains various backwoods wilderness campgrounds along the St. Croix River where the waters act as the international boundary of the United States and Canadian shores of the St. Croix Watershed which includes Spednic Lake, St. Croix River and East Grand Lake. Opening on the Victoria Day and Labour Day long weekend, the St. Croix River maintains three Provincial Park in Canada, Spednic Lake Provincial Park, Scott Brook and Gravel Island. St. Croix International Waterway also maintains campsites throughout the St. Croix River that are FREE to use in both Maine and Canada that are to use on a first come - first camp basis. All campsites are a true backcountry camping experience, as there is no electricity, water, or sewer services. All campsites follow the carry in/carry out policies along with the leave no trace program, which means there are no garbage cans or recycling bins - you are required to take all waste and recycling with you when you leave the park .



Experience free backcountry camping at places like Scott Brook. Photo by Sandi Wheaton

Remote sites along the river are only accessible through water in both Maine or New Brunswick. These sites do not require a reservation but are often occupied during weekends and holidays. It is highly recommend that those looking for a quiet wilderness experience visit during the week.

There are three sub-regions in the St. Croix boundary system: Chiputneticook Lakes - (North Lake, East Grand Lake, Mud lake Falls, Spednic Lake and Palfrey Lake), which have

outstanding sport fishery resources, forested shorelands, backcountry recreational resources and wildlife habitat. River Mainstem - Recognized

as one of the most unspoiled recreational river corridors in the Northeast, this river is highly valued by canoeists, fishermen and naturalists. Estuary - Where 25 ft/7.5 m tides rise along the shores of historic port communities and St. Croix Island, where in 1604 French explorers established the first permanent New World colony north of Florida.

Getting Around

EAST COAST FERRIES

Deer Island - Campobello Car Ferry
www.eastcoastferriesltd.com
 Eastport Lubec Ferry (207) 853-2635 (Breakwater Pier)
 Downeast Water Taxi (207) 904-8029 (Breakwater Pier)
 Eastport Windjammers (207) 853-2500 (104 Water Street)

AIRPORTS

Bangor Airport (866) 359-2264
 Bar Harbor Airport (207) 667-7329

BETWEEN CALAIS & BANGOR:

West Bus Service: public bus service between Bangor and Calais. Major stops between Calais and Bangor include Perry, Machias and Ellsworth. Flag stops are located in Pembroke, Dennysville, Whiting, Jonesboro, Columbia, Milbridge, Gouldsboro, Sullivan and Hancock. FMI (800) 596-2823
www.westbusservice.com

BETWEEN BANGOR & PORTLAND:

Concord Coach Lines: (800) 639-3317
concordcoachlines.com
 (bicycles stored below the coach if there's room)

BETWEEN PORTLAND & BOSTON:

Concord Coach Lines: (800) 639-3317
concordcoachlines.com
 (bicycles stored below the coach if there's room)
 Amtrak Downeaster: (800) 872-7245
amtrakdowneaster.com
 (purchase bike ticket, loaded in luggage car)

CAR CHARGING STATIONS

Tesla Supercharger - 5 Walton Dr, Brewer, ME • 1941 Medway Rd, Medway • 32 Houlton Rd, Baileyville • The Algonquin Resort, 184 Adolphus St., St. Andrews • Ganong Nature Park, 350 Todd's Point Rd, Dufferin • Rossmount Inn Hotel Restaurant & Bar, 4599 Route 127, St Andrews, NB
EV Connect Station - 143 S River Rd, Calais ChargePoint Station 626 Main St, Calais

THE trails Motorized and Biking Fun



Breakneck Mountain Sno-Riders Maintains 100 miles of trails in Alexander, Crawford, Cooper and Township 19; open 24/7; rest rooms, kitchen and seats 40

East Grand Snowmobile Club Danforth, ME; 80 miles of well groomed trails; Troy Fish (207) 538-6980

Grand Lake Snowmobile Club maintains two sets of trails; 42.1 miles of municipal trails, including 28.1 miles of ITS 84, connecting Calais to Old Town, Maine. All trails open to public. Lodge in town, open year round, the Canalside Cabins, FMI call (207) 227-8457 or email grandlakesnowmobileclub.com

Ridge Riders Trail Club Machias; 700 miles in the local trail system; for more info email: rtrailclub@yahoo.com

Grand Lakers ATV Club Danforth; for more information call the president, Roger Rossignol at (207) 448-7739; to become a member contact Linna McLaughlin at (207) 448-7088

Sunrise Snowmobilers Formed in Calais in the 1970s; approximately 21 family members and 16 business members. This is strictly a snowmobile club, which maintains approximately 40 miles of trails. All trails open to the public. Trails connect to the Down East Sunrise Trail through the Moosehorn National Wildlife Refuge.

Sunrise Trail Riders ATV Club Calais; always seeking new members; \$20 annually; maintains 5 miles of trail. All trails are open to the public.

St. Croix Trail Riders formed in the 1970's in Baileyville. Both a snowmobile and ATV club. Maintains 48 miles of multi-use trail open to the public. Trails connect with trails maintained by Grand Lake, Breakneck, Calais, and connect with the Down East Sunrise Trail via trails maintained by other clubs.

Robbinston Bushwackers club is strictly ATV, maintaining 48 miles of trails, most of which are multi-use. All trails open to the public. The trails are accessible to the Sunrise Trail through trails maintained by other clubs.

Princeton Pathfinders FMI email: princeton.pathfinders@hotmail.com



Bold Coast Scenic Bikeway 211-mile, on-road trail winding along the rugged Atlantic coastline through 23 Bold Coast communities; In Calais, the Bold Coast Scenic Bikeway joins with the northern points of the East Coast Greenway and US Bike Route 1, which extend south to Florida. When combined with the Bold Coast Scenic Bikeway, these interconnected, mapped on-road trails make it easy to plan single- and multi-day riding opportunities throughout the Bold Coast region and beyond. Cyclists carrying valid passports can cross the international border into New Brunswick, Canada from Calais into St. Stephen and from Lubec onto Campobello Island, home to Roosevelt Campobello International Park. For more information visit discoverboldcoast.com



East Coast Greenway Spine Route: 336 miles. Protected Greenway 125 miles. www.greenway.org/states/maine



Photo by Mark Roussel

Motorcycling the Area The roads and scenery of Washington County Maine provide lots to explore and is an experience unlike many others. Motorcyclists are treated to some wonderful views, tasty stops along the way and maybe best of all few other vehicles to compete for space on the highway.

Downeast Maine is a great destination for riders searching for a virtual scenic paradise to explore. Motorcycle rides take place among natural

beauty that remains largely unspoiled by time or man.

There are area coordinated rides for various events as well as local club events.

There are many local group rides that are open to the public or scheduled as part of community events. A couple places to find information on rides are the Facebook pages listed below.

Down East Biker Group: A place for local bikers to coordinate rides and support local bike runs.

Wabanaki Warriors MC (WWMC): Rides are open to the public and listed on the page along with other events. The address of the clubhouse on the Airline Rd is listed. Anyone with an interest in riding is welcome to stop in.

As of the date of this printing there were a few dates confirmed for rides.

Check the sites above often during the riding season for updates on others as they are scheduled.

Jul 14: WWMC Fallen Brothers ride. Starts at the clubhouse.

Aug 25: Blaire Emery ride. A motorcycle ride in memory and honor of an Iraq War veteran.



The St Croix Valley Chamber of Commerce has been working with local representatives, the Downeast Sunrise County Trail Coalition, the city of Calais, the towns of Baring and Charolette to finish the 87 mile, multiuse trail that runs from Ellsworth to Ayers Junction, into Calais, Maine.

Breakneck Mountain ATV a division of Sno-Riders; they share the Sno-Rider trails and have access to municipal roads. FMI call (207) 454-8775

Dennysville Snowmobile & ATV AKA the Eastern Rail Riders is located 1+/- mile west on Route 86, from U.S. Route 1 in Dennysville, Maine. Club house located on the Down East Sunrise Trail; open 24/7 all year. A place to stop for a soft drink or cup of coffee. The club maintains 75 miles of multi-use trails, of which 52 miles outside the Down East Sunrise Trail. All trails open to the public, FMI call (207) 263-6306 or email Dennysvillesnowatvclub@gmail.com

Sunrise Trail - Machias Rte 1; parking at boxcar, Station 98, west of causeway or on causeway (no trailers); four miles, Machias to East Machias; cross over extensive salt marshes and experience views across the Machias and East Machias rivers. The trail crosses the Machias Dike, where both flea and farmers' markets take place in the summer. A motel, ATM and nationally famous blueberry pie-making restaurant provide amenities just west of the causeway. Explore town, then consider a side trip to Roque Bluffs State Park for an on-road bike loop ride.

East Stream ATV Riders Clubhouse on East Stream Road, Cutler, Maine. FMI contact, Mike Look at (207) 255-4167

Downeast Trailriders East Machias; FMI call Grant Hanscom, (207) 557-7816

Sunrise Trail - East Machias East Machias to Rocky Lake Crossing, trail crosses US 1 and ME 191; seven mile trail length; limited parking at ME 191/DEST crossing; trail runs through fields and forest while paralleling ME 191. The trail intersects the southeast corner of Rocky Lake Public Lands, accessed by a multi-use trail, before swinging east toward Dennysville. It is just a short side trip to the boating and camping areas on Rocky Lake's shore; visit the East Machias Aquatic Research Center (EMARC) to learn about Maine's fisheries. Cutler Coast Public Lands, Cobscook Bay and Quoddy Head State Parks and lighthouse are recommended side trips. For maps and information visit sunrisetrail.org

19th Annual

Maine State Star Party

CAMP UNDER THE STARS

August 9th - 11th

ABOUT THE EVENT:

Founded in 2006 as an effort to bring together the Maine stargazing community and all those with a passion for astronomy, the Maine State Star Party is a free to the public annual gathering of astronomers across the state and greater New England Area. This event is open to astronomers of all levels are welcome. There is a shared free camping space, scopes for free viewing, trivia, games and prizes for all ages, and more!



WHAT TO BRING:

- Bathrooms (including showers) are available at the park - bring your own soap
- Food & Water (fountains available onsite)
- Camping gear (tent, sleeping bag)
- Red Flashlights or Red Light Filters
- Outhouses are onsite



[Click Here or Scan Code to Check Out Our Video From the 2023 Maine State Star Party](#)



WHERE IS IT LOCATED:



Cobscook Bay State Park
40 S Edmunds Rd
Dennysville, ME 04628

Friday 8/9/24

- 12:00 PM - 7:00 PM **Arrival & Set-Up**
- 7:00 PM - 2:00 AM **Open Sky Gazing & Meet the Astronomers**

Saturday 8/10/24

- All Day Solar Viewing**
Viewing through filtered telescopes will occur throughout the day
- 10:00 AM - 1:00 PM **Astronomy Games for Kids**
A series of prizes will be awarded
- 2:00 PM - 2:45 PM **Building & Operation of Ancient Pines Observatory**
Speaker: Paul Butler, Amateur Astronomer
- 3:00 PM **Astronomer of the Year Award**
- 3:15 PM **Astronomy Jeopardy Game**
- 8:00 PM **Evening Viewing**

Sunday 8/11/24 11:00 AM **Check-Out**

Contact:

Charlie Sawyer
President, Downeast Amateur Astronomers



csawyer7@roadrunner.com

Business Directory

ACCOMMODATIONS

Bellmard Inn

86 Main St., Princeton (207) 796-2261
www.bellmardinn.com

Big Lake RV Park & Campground

55 True North Ln., Big Lake Twp
(207)796-2987 www.biglakerv.com

Canalside Cabins

31 Canal St., Grand Lake Stream
(207) 796-2796 www.canalsidecabins.com

Eastland Motel

385 County Road, Lubec (207)733-5501
www.eastlandmotel.com

Hilltop Campground

317 Ridge Rd., Robbinston (207)454-3985
www.hilltopcampgroundmaine.com

The International Motel

626 Main Street, Calais (207)454-7515
www.internationalmotel.com

Keenes Lake Family Campground

70 Keenes Lake Rd., Calais (207)454-2022
http://keeneslakecampground.com

Kendall Farm Cottages & Event Barn

20 Kendall Ln, Perry (207) 214-1124
https://www.kendallfarmcottages.com/

Redclyffe Shore Motor Inn

Route 1, Robbinston (207) 454-3270
www.redclyffeshoremotorinn.com

West Quoddy Station

823 S Lubec Rd, Lubec (877) 535-4714
www.quoddyvacation.com

ACCOUNTING

H&R Block

109 North St., Calais (207) 454-3966
www.hrblock.com

Tammi Smith Tax & Accounting Service

166 A North St., Calais (207) 454-0065
www.tammismith.com

AGRICULTURE

Smithereen Farm/Greenhorn Farm Store

12 Little Falls Road, Pembroke, ME
(207)726-2141 www.smithereenfarm.com

APPLIANCES/SERVICES

Eastern Maine Appliance

337 North St., Calais (207) 454-3650

Androc Plumbing

484 North St., Calais (207) 454-2339

Border Electric

337 North St., Calais (207) 454-8619
www.borderelectric.com

Riverside Electric, Inc.

334 North St., Calais (207) 454-7815
www.riversideelectricinc.com

SHOPS

C&E Feeds Calais Package Hub & Community Market

482 North Street, Calais (207) 454-3666
www.candefeeds.com

Rachel Ashley Jewelers

293 Main St., Calais (207) 454-8814
Check Facebook FMI

West Quoddy Gifts

16 Loon Lane, Lubec (207) 214-5653
www.westquoddygifts.com

ATTORNEYS

Mahar & Clark

110 North St., Calais (207) 454-7641

AUTOMOTIVE

O'Brien's Autocare and Sales

520 Main St., Calais (207) 454-8460
o-care.edan.io

Pratt Associates, Inc.

Automotive Sales / Service
143 S. River Rd, Calais
(207) 454-0600 or (866) 561-9596
www.prattchevrolet.com

BANKS

Bangor Savings Bank

232 North St., Calais (207) 454-0223
54 Washington St, Eastport (207) 853-2534
1 Center Street Machias (877) 226-4671
www.bangor.com

Camden National Bank

344 Main St, Calais (207) 454-2123
6 M & M Place, Machias (207) 255-0041
51 Main St., Jonesport (207) 497-5902
29 Main St., Milbridge (207) 546-2521
www.camdennational.com

Downeast Credit Union

254 North St, Calais (207) 454-8940
23 Third Ave, Baileyville (207)427-3333
211 Main St., Machias (207) 255-0172
www.downeastcu.com

First National Bank

319 North St., Calais (207)454-2141
102 Washington St, Eastport
(207) 853-6270 www.thefirst.com

Machias Savings Bank

210 North St., Calais (207) 454-7178
127 Main St., Princeton (207) 796-5109
4 Center St., Machias (207) 255-3347
357 US Hwy 1, Columbia (207) 483-6561
38 Depot St., Danforth (207) 448-9048
138 North St., Houlton (207) 532-7996
www.machiassavings.com

CANOEING & KAYAKING

Sunrise Canoe & Kayak

168 Main St, Machias
(207)255-3375 or (877)980-2300
www.sunrisecanoeandkayak.com

St Croix International Waterway Commission

(207)952-9069 www.stcroix.org

CARGO/FREIGHT/MOVING

A.N. Deringer

12 Whitney St., Calais (207) 454-3951
www.anderinger.com

Able Moving Services

P.O. Box 22, Baileyville (207) 316-3247
www.ablemovingmaine.com

CHAMBER OF COMMERCE

Eastport Chamber of Commerce

141 Water St., Eastport (207) 853-4644
www.eastportchamber.net

Grand Lake Stream Area Chamber of Commerce

15 Water Street, Grand Lake Stream
grandlakestream.org

Greater East Grand Lake Chamber of Commerce

PO Box 159, Danforth (207) 448-2321
eastgrandlake.net

APPLE (Association Promoting & Protecting the Lubec Environment)

www.visitlubecmaine.com

Machias Bay

Chamber of Commerce

Station 1898, 2 Kilton Ln., Machias
(207) 255-4402 www.machiaschamber.org

St. Croix Valley

Chamber of Commerce

39 Union St., Calais (207) 454-2308
www.visitstcroixvalley.com

St. Stephen

Chamber of Commerce

34 Milltown Blvd, St. Stephen, N.B. Canada
(506) 466-7703 www.ststephenchamber.com

Interested in Advertising for 2025?

Contact us at:
visitstcroixvalley@gmail.com

Advertising opens October 2024



Business Directory

ART/MUSEUMS

Eastport Art Fests

Find us on Facebook
eastportartwalk@gmail.com
www.eastportartfests.org

Schoodic Sculpture

Symposium

PO Box 122, Stueben (207)749-1536

ECON DEVELOPMENT/CIVIC

Calais Downtown

Revitalization Coalition

P.O. Box 146, Calais

Calais Rotary Club

P.O. Box 165, Calais (207) 454-2293

ridist7810.org/clubInfo/calais

Downeast Economic

Development

63 Broadway, Baileyville
11 Church St., Calais (207)214-5926

Sunrise County

Economic Council

330 North St., Calais
7 Ames Way, Machias (207) 255-0983
sunrisecounty.org

EDUCATION / TRUSTS / INITIATIVES

Downeast Lakes Land Trust

4 Water St., Grand Lake Stream
(207) 796-2100 www.downeastlakes.org

Robbinston Historical Society

P.O. Box 39, US Rte 1, Robbinston
(207) 454-2854 townofrobbinston.org/hs

St Croix International

Waterway Commission

email: programs@stcroix.org
(207)-952-9069 www.stcroix.org

St Croix Regional

Technical Center

34 Blue Devil Hill, Calais (207) 454-2581
www.stcroixtech.org

Washington County

Community College

One College Dr., Calais (207) 454-1000
www.wccc.me.edu

FOOD & DRINK

Crumbs Cafe & Bake Shoppe

257 Main St, Calais (207) 454-8995
www.crumbslunch.com

Divots & Outside Deck

@ St Croix Country Club
48 River Rd, Calais (207) 454-3344
www.stcroixcountryclub.com

Dunkin Donuts

131 North St., Calais (207) 454-3301
www.dunkindonuts.com

Jo's Diner and Pizzeria

195 Main St., Calais (207) 454-8400

Lubec Brewing

41 Water St, Lubec (207)733-4555
or visit Facebook

McDonald's of Calais

191 North St., Calais www.mcdonalds.com

Riverview Restaurant

& Lounge

421 Main St, Calais
(207) 454-4177 or check Facebook

GOLF COURSE & COUNTRY CLUB

St. Croix Country Club

48 River Rd., Calais (207) 454-8875
www.stcroixcountryclub.com

NEWS/RADIO

The Calais Advertiser

23 Church St., Calais (207) 454-3561
https://www.calais.news

Discover Maine Magazine

207-874-7720
info@discovermainemagazine.com

WQDY Inc. & WCRQ

637 Main St., Calais (207) 427-7545
www.wqdy.fm or www.wcrq.fm

HOME IMPROVEMENT SUPPLIERS

Ace Homecenter

295 North St., Calais (207) 454-2309
www.calaisacehomecenter.com

Hammond Lumber Company

372 South St., Calais (207) 454-2576
www.hammondlumber.com

Sherwin Williams

305 North St, Calais (207)454-7518
www.sherwin-williams.com/

HEALTH SERVICES

Calais Community Hospital

24 Hospital Lane, Calais (207) 454-7521
www.calaihospital.org

Aroostook Mental

Health Services

127 Palmer St, Calais (207)454-0775

INSURANCE

Down East Insurance Agency

254 North St. Calais
(inside Downeast Credit Union)
(207) 427-3126 or 23 3rd Ave, Baileyville
www.downeastinsurance.com

FA Peabody Co.

254 Main St, Calais (207) 454-2556
www.fapeabody.com

Varney Agency Inc.

325 North St, Calais (207) 454-2227
varneyagency.com

RENTAL SPACE

Calais Armory

Rental Program

53 Calais Ave., Calais
daniel.p.nadeau2.nfg@army.mil

Kendall Farm Cottages & Event Barn

20 Kendall Ln, Pery (207) 214-1124
www.kendallfarmcottages.com

MANUFACTURING

Woodland Pulp LLC

144 Main St, Baileyville (207) 427-4004
www.woodlandpulp.com

MOVING / FREIGHT

Able Moving Services

PO Box 22., Baileyville (207) 427-4004
www.ablemovingmaine.com

A.N. Deringer

12 Whitney St., Calais (207)454-3951
www.anderinger.com

MUNICIPALITIES

Town of Alexander

50 Cooper Rd, Alexander
(207) 454-3011 Fax (207)454-3058
alexandermaine.com

Town of Baileyville

63 Broadway, Baileyville
(207) 427-3442

www.baileyvillemaine.org

City of Calais

Church St., Calais
(207) 454-2521

www.calaismaine.org

Grand Lake Stream

15 Water St, Grand Lake Stream
(207) 796-2001
https://grand-lake-stream.org/

Town of Princeton

15 Depot Street Princeton
(207) 796-2744

REALTORS

The Christopher Group

5 Main St, Blue Hill, ME
Samra Kuseybi (207) 214-7401
Libby Bryant (207) 461-9170
Shirley Erickson (207) 255-6043
Aaron Currier (207) 200-1697
https://www.tcgre.net

Realty of Maine

458 Main St., Bangor
(207) 214-1124
georgiekendall.agent.realtyofmaine.com

UTILITY SERVICES/REPAIR

Androc Plumbing

339 North Street, Calais (207) 454-2339

Border Electric

337 North Street, Calais (207) 454-8619
www.borderelectricinc.com

Dead River

18 South St, Calais (207) 454-7511

Eastern Maine Electric Co-Op

21 Union St, Calais (207) 454-7555
www.emec.com

PCT Communications

483 North St., Calais (207) 454-2174
www.uscellular.com

Pioneer Broadband

34 Military St, Houlton (207) 335-1254
www.pioneerbroadband.net

Riverside Electric

334 North St., Calais (207) 454 7815
www.riversideelectricinc.com

Join Us!

www.visitstcroixvalley.com

visitstcroixvalley@gmail.com

207-454-2308

St. Croix Valley

CHAMBER OF
COMMERCE

Insurance

As a Maine Insurance Agency, we understand **your needs**. We live by the "*People helping people*" philosophy and are ready to assist you with:

- Life Insurance
- Home & Auto Policies
- Recreational Vehicle Coverage
- Umbrella Policies
- Business Insurance

Get a free quote today:
866.897.1365
downeastinsurance.com



Downeast Insurance is a wholly-owned subsidiary of Downeast Credit Union. Insurance products are not Federally Insured by NCUA.

Credit Union

At Downeast Credit Union and Insurance, we want to **reward you for your Loyalty**. That is why Loyal Members can enjoy perks like *rate discounts* on loans, *no closing costs* on HELOCs, even chances to *win cash*, and more!

Learn about Loyalty Rewards:
800.427.1223
downeastcu.com/loyalty

Best Places to Work in Maine
2017 | 2018 | 2019 | 2020 | 2021 | 2022 | 2023

Federally Insured by NCUA.





R.M Realty of Maine  

Georgie Kendall – Broker, Realtor

207.214.1124

georgiekendall@gmail.com

Specializing in Way Downeast Properties



Raw Land & Farms
Cottages
Commercial
Fixer-Uppers
Retirement Castles
Waterfront



Home of the Rhubarb Festival
100-year-old Event Barn
Boyden Lakeside Cottage
Passamaquoddy Bay Cape
Mowry Beach RV Lot



Unplug. Relax. Be still.

KendallFarmCottages.com