

best kept secrets

WAY DOWNEAST MAINE

Saint Croix Valley



2025

FREE

St Croix Valley Chamber of Commerce

Photo by Amie Flowers



bridging culture, commerce and community



International Commerce

A crossroads to grow your business

With a bustling border on the St. Croix River, Calais offers a unique opportunity for your business to build an international client base.

Whether you own an established business looking to expand its offering, or you're just breaking into an international market, the city of Calais offers the location and support to grow your business.

Quick Facts

- Over one million cars carrying 1.5 million people cross the Calais border every year
- The Calais port of entry is the eighth busiest Canada/U.S. border
- Border crossing open 24 hours a day, 7 days a week

Bridging Culture and Community

We invite you to live, work and play in Calais

Rich with stunning architectural treasures, overlooking a rugged and beautiful coastline, Calais has a remarkable endowment of historical buildings, natural beauty and a friendly, welcoming community.

Calais now has fiber-optic high speed internet. The advantage of high speed internet is the ability to work from home. The small town feel with global connections.

For the outdoor enthusiast, Calais is surrounded by a wealth of natural wonders including: lakes, streams, hiking trails -- perfect for fishing, hiking, paddling, biking and exploring.

Quick Facts

- Settled in 1779, incorporated as a city in 1850
- Population of 3,123; 1400 households
- Mayor/Council form of government

Education

- Calais is home to an elementary, middle and high school, as well as regional technical school and community college

Development Office:

11 Church Street, Calais, ME 04619

T: + 1 207.454.2521

Open 8am - 5pm EST, Mon-Fri

www.calaismaine.org

Calais ■ Baring ■ Baileyville ■ Princeton Indian Township ■ Pembroke ■ Dennysville
Grand Lake Stream ■ Vanceboro ■ Perry
Robbinston ■ Eastport ■ Pleasant Point ■ Charlotte ■ Machias ■ Cooper ■ Marion Crawford ■ Waite ■ Alexander ■ Cathance
Meddybemps ■ Jonesport ■ East Machias
Jonesboro ■ Lubec ■ Whiting ■ Trescott
Addison ■ Columbia Falls
Harrington ■ Cutler ■ Bangor ■ Northfield
Whitneyville ■ Wesley ■ Brookton ■ Cherryfield
Columbia ■ Danforth ■ Deblois ■ Milbridge
Machiasport ■ Marshfield ■ Beddington
Roque Bluffs ■ Steuben ■ Talmadge
Topsfield ■ Codyville ■ St. Stephen
Milltown ■ St. Andrews
Campobello - New Brunswick, Canada

St. Croix Valley Chamber of Commerce
39 Union St., Calais, ME 04619
207-454-2308
visitstcroixvalley.com
visitstcroixvalley@gmail.com

Contributing Writers/Organizations:
Kaileigh Deacon
Downeast Coastal Conservatory
Downeast Salmon Federation
Karen Raye
Jayna Smith
St Croix Valley Chamber of Commerce
DeeDee Travis

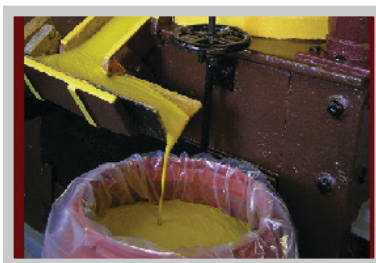
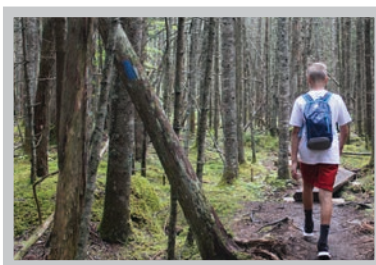
Photography:
Capshore Photography
Carrie Cropley
Kaileigh Deacon
Amie Flowers
Kara Mitchell
Karen Raye
St Croix Historical Society
DeeDee Travis

Cover Photo:
Amie Flowers

Editor: DeeDee Travis

If you are interested in advertising for the 2026 season, email us!

Printed in Canada 2025



What to Do

- 4 Ongoing
- 8 Events & Festivals
- 16 Tradition of Maine Maple Syrup
- 22 Summer Camps
- 27 Beachcombing
- 28 Fishing & Hunting
- 38 Camping & Paddling
- 44 Maine State Star Party

The Trails

- 23 Orange River Water Trail
- 34 Hiking
- 42 Motorized & Biking Fun
Snowmobile ATV Bike & Motorcycle

Art/Museums/Education

- 47 Wabanaki Culture Center

Small Town Living

- 4 Farmers Markets
- 5 Welcome Downeast
- 6 Calais
- 9 Nothing Like a County Fair
- 12 Grand Lake Stream
- 13 Baring, Alexander, Baileyville & Princeton
- 15 Pembroke & Dennysville
- 17 Robbinston
- 18 Machias & Roque Bluffs
- 19 Machiasport, Jonesboro & Jonesport
- 20 Lubec & Cutler
- 21 Campobello
- 24 Eastport & Perry
- 31 Bold Coast Runners
- 31 Getting Around
- 33 Eat Downeast
- 41 International Festival
- 45 Business Directory

Some Best Kept Secrets

- 11 Raye's Mustard Story
- 14 Dennys River Sportsman Clubhouse to Public Pavilion
- 26 If These Walls Could Talk

What to do ONGOING

CHOCOLATE MUSEUM

Hands-on exhibits, vintage chocolate boxes. Open year round, 73 Milltown Boulevard, N. Canada. Admission fee. 506-466-7848.
www.chocolatemuseum.ca

THE HUNTSMAN FUNDY DISCOVER AQUARIUM

Mid May to Mid October. Open 10 to 5 daily; St Andrews, NB 506-529-1200;
www.huntsmanmarine.ca

MCCURDY SMOKEHOUSE MUSEUM & ART GALLERY

June 1 opening, Lubec ME: Tours daily 11-4. Adjacent McCurdy Art Gallery: local artisans, photographers, crafters & painters. Admission FREE. www.lubeclandmarks.org

MUSIC ON THE GREEN

June to September, 6:30 pm, Tuesdays, downtown at Flat Iron Park. Weekly concert series. Admission FREE. See the facebook page for a schedule of performers.

PASSAMAQUODDY CULTURAL HERITAGE MUSEUM

Open Mon-Fri, 10-3. See artifacts of the Passamaquoddy, birch bark baskets, woven baskets, beadwork, and much more. 197 Rt 1, Princeton, ME 207-796-5533.

SEASONAL FARMERS STANDS

See listing on page 33.

ST CROIX COUNTRY CLUB & GOLF COURSE

Nine hole golf course, pro shop, full service bar, lounge and grill, youth clinics (free), and lessons. Right on the St Croix River, Rt 1, Calais, ME. Open seasonally. 207-454-8875.
www.stcroixcountryclub.com

ST CROIX HISTORICAL SOCIETY

Main St, Calais, ME. Offering literature and public meetings. Open during the summer months or by appointment for tours. Admission FREE

ST CROIX INTERNATIONAL PARK

International historic site with sculptures, tours, exhibits, book sales, youth programs, restrooms, picnic areas and rudimentary boat launch. Rt 1, Calais, ME 207-288-3338.
www.nps.gov/sacr

SUMMER MUSICAL CONCERT SERIES

St Stephen NB David Alison Ganong Chocolate Park. Local talent for free public concerts every Thursday night through summer months. Admission FREE.

Farmers Markets

C&E Feeds 482 North Stree, Calais; Open daily 8 am-5pm. We work closely with Washington County farmers and artisans to provide you with the best Maine made products. Our community market boasts the largest selection of local produce and meats in Calais.

Eastport Saturdays, 11am-1pm in the Port Authority Parking Lot

Lubec: "the Easternmost market in the U.S.A," every Saturday, May - Oct; 10 am - noon; Lubec Community Outreach Center, 44 South St, Lubec

Machias Valley, May - Oct; Fridays, 9 am - 2 pm perennial plants, seafood, a food truck, wild blueberries, mixed produce.

Milbridge 29 Main St (Camden National Bank parking lot on Route 1) 04658 • every Saturday 9 am - 12 pm

Franklin open Late July - early October, every Saturday, 9 am - 1 pm, 33 Blackwood Road (Rt. 182)

So I go North to get Way Down East? That Seems Odd!

The term "Down East" or "Downeast" is most often defined in Maine as the eastern coastal region of the State in Washington and Hancock Counties. Way Down East would then refer to the northern most section of this area. The description leaves many visitors scratching their heads trying to figure out why the most northeastern area of the United States is referred to as Down East.

The origin of the phrase "Down East" is typically traced to nautical terminology referring to direction, rather than location. In the warm months most suitable for sailing, the prevailing winds along the coast of New England and Canada blow from the southwest, meaning ships sail downwind to go east. As such, the northeastern stretches were said to be "Down East" in relation to major western cities such as Boston. Correspondingly, sailors spoke of going "up to Boston" from Down East ports, a phrase still common in Maine, despite the fact that Boston is around fifty miles to the south of Maine. The term can be used as an adverb, adjective, or noun. The Oxford English Dictionary traces the earliest known use in print to 1825. The phrase "down-easter", meaning a person from "Down East", appeared in print in 1828.



Downeast Maine is characterized by its stunning natural beauty, including rugged rocky coastlines, charming harbors, and mountains-to-the-sea views. The area is a hub for outdoor activities like fishing, hunting, hiking, and boating. It's also known for its vibrant farming, fishing and lobster communities, as well as a thriving grass roots arts and food scene. Way Downeast Maine is within Washington County, which is referred to as the "Sunrise County" because it includes the eastern most point in the United States. The area is full of beautiful scenery, but it is also a place with a long history and a proud heritage. Living here can be a unique and exciting experience full of rural charm. Visiting here can bring tranquil peace and a chance to recharge before returning to the hustle and bustle of a busy life. The area is full of down to earth people, small town charm and a friendly community atmosphere. To experience it best you just have to put yourself out there, take part, and join in.

Welcome to Downeast Maine!

CALAIS



Calais Skatepark All are welcome - skateboards, bmx, rollerblades and scooters. Open dawn til dusk. Use at own risk - helmets recommended. Proudly built and maintained by volunteers. FMI visit: <https://www.brendanleddyememorialfund.org>



Calais Free Library 9 Union St., Calais • computer access • free wifi • summer programs • the 2nd floor children's section • book sales www.calaisfreelibrary.com

Photo by Capshore Photography

Calais Riverfront Walkway travel along the International Saint Croix River, separating Calais, Maine and New Brunswick, Canada. The 1.5-mile rail-trail marks the first mile of the East Coast Greenway, a project envisioned as a 3,000-mile off-road trail for non-motorized transportation, stretching from Calais to Key West, Florida; this section has many highlights, view some of the river's rapids; a special section located in front of the Wabanaki Cultural Museum has been dedicated to Ken Berry by the city, for his hard work and dedication to the trail; the section is lined with rose bushes and gives a close view of the old working waterfront from the past, and often views of bald eagles resting www.greenway.org/states/maine

St Croix International Historical Society was formed to preserve, protect, and promote the history of the St. Croix Valley, through literature, public meetings, participation and preservation. The Society publishes a quarterly newsletter, sells books and cards, has a large collection of photos and an extensive research library. The Society owns and maintains the Whitlock Mills Lighthouse, the Holmes Cottage and the Holmestead on Main Street, Calais. These buildings contain our artifacts collection. FMI: <https://stcroixhistorical.com/>

Downtown Mural by national award-winning artist Amy Bartlett Wright is courtesy of a grant received by the local food pantry from the George G Wright Endowment for the Humanities Fund. The mural includes a 30' rendition of the famous local steamship, the Rose Standish.

Thomas DiCenzo Athletic Complex 54 Calais Ave, Calais; two baseball diamonds, batting cages, tennis courts, basketball court, public playground, skatepark and Howard Fox Memorial Pool (public pool). The entire compound is located in one large squared off section.

St Croix Country Club & Golf Course US Rte 1, Calais; nine hole golf course; pro shop; full service bar; FREE youth clinics; lounge and grill; directly on St. Croix River, seasonal; FMI call (207) 454-8875 or visit www.stcroixcountryclub.com

Whitlock's Mill Lighthouse Located on the south side of St. Croix River, Calais. The lighthouse and grounds are not open to the public, but can be viewed from the St. Croix River rest area on Route 1 or be seen from the river. The lighthouse was named after Colin Whitlock, who tended the lantern before the lighthouse was built. Its location makes it the northernmost lighthouse in New England; stcroixhistorical.com/?page_id=28

Wabanaki Culture Center 39 Union St., Calais; Monday - Friday 8am - 4pm, marine touch tank, exhibitions featuring the history of St. Croix Valley and shipbuilding, Wabanaki baskets, beadwork and artwork; FMI call (207) 454-7878



Calais Riverfront Walkway
Photo by Amie Flowers

State Cinema 239 Main St, Calais; watch a movie; visit www.statecinemascalais.com for a full movie listing or call (207) 454-8830

WCCC Disc Golf Located in the middle of WCCC's campus is a 9 hole disc golf course available to the public. Course has par 3s and 4s to practice long and short distance game. Rental equipment available, including drivers, mid range discs, and putters. This course is usually open all year-round. visit wccc.me.edu/oac or call (207) 454-1060

Keenes Lake Family Campground 70 Keenes Lake Rd., Calais; (207) 454-2022; open early May to late October, swim for the day, play volleyball on the beach, rent a SUP or paddleboat, offers a variety of camp sites, dog friendly, small store, offers ice, drinks, pizza, souvenirs, propane is available to fill up your tanks before you hit the road; FMI visit keeneslakecampground.com

Holmes Cottage & Museum 527 Main St., Calais • The museum is open during the summer months or by appointment • monthly presentations are given on the first Monday of the month. <http://stcroixhistorical.com>

Calais Memorial Park Located on Main St, Calais, ME 04619; a playground for younger kids, featuring Civil War monument; picnic area and gazebo; FMI visit: www.maine.gov/civilwar/monuments/calais.html

✓ Local.
✓ Loyal.
✓ Where you belong.

www.downeastcu.com

Federally Insured by NCUA

What to do EVENTS & FESTIVALS

JANUARY

Sardine & Maple Leaf Drop New Year's Eve celebration; music, kids crafts in Bank Square, downtown Eastport, ME; from the third story of the Tides Institute & Museum of Art; FMI visit <https://www.tidesinstitute.org/new-years-eve/>

FEBRUARY

Hearts for the Arts; An auction of heart themed artwork by local artists to benefit the Eastport ArtWalk Weekends. Reception held first weekend of February; FMI www.eastportartwalk.com

Annual Frozen Mosin midwinter shoot; Feb 15; Pleasant River Fish & Game presents the most unusual shooting event in the Northeast. Columbia; events include 100 yard rifle match, 25 yard rapid fire match, 200 yard off hand gong shoot, and surprise matches. FMI www.prfga.org

MARCH

WCCC Annual Polar Dip is held yearly, often around the first Friday in March – the event fundraises for the Ronald McDonald House and Sarah's House of Maine. FMI see the WCCC website www.wccc.me/edu

Maine Maple Sunday Weekend is held the fourth Sunday in March. Sugarhouses across the State open to the public and hold a variety of activities. Duvall Maple Lane Sugary in Robbinston occasionally takes part, but search out the web to see if others in the area have festivities planned.

APRIL

Boyden Lake Half Marathon brings together runners, walkers, and ruckers to the scenic roads surrounding Boyden Lake in Perry the first Sun in April. Organized by the Bold Coast Runners in partnership with Pottle Tree Farm, this event offers participants an opportunity to challenge themselves while supporting veterans and their families. FMI, runsignup.com/boydenlakehalf.

Downeast Salmon Federation's Smelt Fry takes place in Columbia Falls on April 26. This popular community meal coincides with many fun and educational events, including learning about raising Atlantic salmon, the importance of marshes and river habitats, and how to tie a fly. There will be live hatchery tours, music, a touch-tank, a mobile smoker, and many other activities for the entire family to enjoy. FMI, visit mainesalmonrivers.org/annual-smelt-fry.

MAY

Community Dinner, Game Night & Fiber Circle; free home-cooked meal, games, music and fiber; **First Monday of the month** 5pm-8pm; FMI cobscookinsitute.org

Harald Saeverud Music Program Spring Event held each May; Events held in Machias, Eastport and Calais. FMI see www.hsmusicprogram.com

Huntsman Marine Science Centre | Fundy Discovery Aquarium St. Andrews, NB, Canada; open for season from 10 am- 5 pm daily from mid May to Oct; FMI visit www.huntsmanmarine.ca/

West Quoddy Head Lighthouse Open for season Memorial Day weekend; 973 South Lubec Rd, Lubec, ME; FMI visit visittubec-maine.com

Downeast Spring Birding Festival Memorial Day Weekend, a unique birding experience during spring migration and the breeding season with guided hikes and boat tours, Over 400 bird species have been sighted in Maine. There are a full list of events, many are free. Register to see a full list of events, times and locations call (207) 733-2233, or visit www.thecccl.org/birdfest

Opening Day - St Croix Island Park; Memorial Day Weekend; US Rte 1, Calais; Saint Croix Island International Historic Site, part of the National Park Service system opens for season; FMI www.nps.gov/sacr

Pennamaquan Alewife Festival is set for its fourth year on May 24, 2025, in Pembroke from 10 a.m. to 5 p.m. This free family fun features smoked fish, free lunch, biologist talks, art activities, music, and more. For more information, visit www.smithereenfarm.com/events.

LAMPS Summer Concert Series; May 25. 12 noon; South Water St, Lubec, Maine

Memorial Day Weekend Yard Sale; May 23-24 8:30 - 4:00; supporting the Robbinston Historical Society; Robbinston Community Center; 904 US Rte 1, Robbinston

JUNE

Community Dinner, Game Night & Fiber Circle; free home-cooked meal, games, music and fiber; **First Monday of the month** 5pm-8pm; FMI cobscookinsitute.org



continued on page 10

THERE'S NOTHING LIKE A COUNTY FAIR!

Washington County Fair

By Kaileigh Deacon

Way Down East in Pembroke, Maine, the Washington County Fair stands as the only fair in Washington County—and has been a treasured tradition since 1849. Nestled in the historic fairgrounds of Pembroke, this down-home style fair is as picturesque and heartwarming as a scene from a classic movie.

Perfect for a family weekend of fun, the Washington County Fair celebrates the transition from summer to fall at the end of August. The fairgrounds come alive with craft vendors offering an array of homemade goods, includ-



ing jams, soaps, and unique crafts, making it the ideal spot to prepare for the upcoming autumn season.

Across the grounds, the excitement continues with activities like the Hay Bale Obstacle Course, Skillet Toss, and Hammer Throw.

Guests can also engage in hands-on experiences, such as cider-making, watching a



blacksmithing demonstration, or enjoying live music. For equestrian enthusiasts, harness racing offers a captivating case of the agility and

show-speed of horse and



driver. Look-

ing for something even more unique? The pig scramble promises entertainment for all ages. Children race to catch piglets in a pen, and the lucky winner earns their prize—a piglet to take home!

This year, the Washington County Fair will take place on August 24 and 25, welcoming everyone to join the festivities. Thanks to the dedication of the Pembroke Trotting Association, this beloved event continues to preserve a piece of history and foster family fun in the heart of Downeast Maine.



What to do EVENTS & FESTIVALS

continued

continued from page 8

Summerkeys Concert; free admission; mid Jun through Aug, Wednesdays, 7:30 pm; Congregational Christian Church, Lubec; www.summerkeys.com

Beginner Hand-Built Garden Pottery Class Fridays Jun 6 & 20, 6-8 pm, Unleash your creativity and add a touch of magic to your garden; register at cobscookinsitute.org

Rhubarb Festival is celebrated annually on the first Saturday in Jun at Kendall Farm, 20 Kendall Land, Perry. Demos on planting and caring for rhubarb and it's versatility in food and drink, Local vendors, music, kids' games, a rhubarb tasting table, crust making, and all things "rhubarb" are celebrated FMI, visit kendallfarmcottages.com

Down East Hospice Volunteers Annual Race (cobscook Bay Road Races) held each year the first Sunday of Jun - run, walk or stroll; 10K / 5 K; one mile fun run - kids ten and under; FMI call (207) 214-2877 or emaurence90@gmail.com; register online www.cobscookbayroadraces.org

Wings & Wheels - Airplane & Car Show, All day Saturday Jun 14 at Eastport Municipal Airport. Fun for all ages, FMI visit @EastportAirport on Facebook

Moosehorn National Wildlife Refuge's Annual Childrens Fishing Derby; Jun 14, 10 am-12 pm, Cobscook Bay State Park; prizes, family fun, food, drinks and even some fishing supplies. FMI www.fws.gov/refuge/mossehorn

Spring Clean-up in Grand Lake Stream Jun 14, 8:30 am – 2 pm. Celebrate spring by helping pick up trash along the roads and trails. Gloves, trash bags, water and lunch included. FMI visit info@downeastlakes.org

Margaretta Days Festival, June 20 & 21, 2025, is held annually in June and commemorates the Battle of the Margaretta as the first Naval Battle of the American Revolution. The event demonstrates life as it was in the colonial era, using reenactment and demonstrations. Also taking place as part are artisan and food vendors, exhibits, and more. Hosted by the Machias Historical

Society, the festival is free to the public. FMI, visit machias-historicalsociety.com.

Crush Cancer 5K third Sat Jun; Jonesboro, hosted by Jonesboro Grange. Craftfair, kids fun run, raffle, spaghetti dinner. More info at <https://runsignup.com/Race/ME/Jonesboro/CRUSH-Cancer5kWalkRun>, or email crushcancer@outlook.com

Moosabec Summerfest Jun 27 – Jul 6; downtown Jonesport, Maine; lobster dinners, lobster boat races, crate races, music, fireworks, vendors, parade. admission FREE; FMI visit <https://www.townofjonesport.com>

Weekend Pottery Intensive: Reimagining Transforming Found Objects Into

Slab-Built Bottles Sat-Sun Jun 28-29, 9am-4 pm, participants will be lead by artist Karissa Arnold; register at cobscookinsitute.org

ATV Jamboree Jun 27-29; 9am - 8pm; Machias, ME; craft fair, food vendors, benefit ride for The Ark Animal Shelter in Cherryfield, live band; Middle River Park. FMI www.machiasatvjamboree.com/

DownEast Pride, June 28-29, Events in Eastport all day Saturday, and Lubec all day Sunday. Rainbow themed art activities, craft vendors, live music, and the "Curbside Queens" drag show. FMI: www.downeastrainbowalliance.com

LAMPS Summer Concert Series Jun 21. 3 pm; 46 Main St, Lubec, Maine; Jean Strazdes presens "Singing Through the Storms"

Bay of Fundy International Marathon Jun 22. FMI visit www.bayoffundymarathon.com

LAMPS Summer Concert Series Jun 29. 12 pm; South Water St; Lubec; Pride in the Park"

JULY

Summerkeys Concert; free admission; mid Jun through Aug, Wednesdays, 7:30 pm; Congregational Christian Church, Lubec; www.summerkeys.com

Community Dinner, Game Night & Fiber Circle; free home-cooked meal, games, music and fiber; First Monday of the month 5pm-8pm; FMI cobscookinsitute.org

Canada Day Jul 1; celebrations St Stephen NB – beginning at 8am; at the waterfront; farmers market, water inflatables for kids, live music, cake.

Eastport 4th & Homecoming; Jul 1 - 4, Eastport, Maine; art, music, food vendors, fireworks, 7 mile race, sail boat, bike and Cod races; Admission FREE; FMI call (207) 853-7076 www.eastport4th.com

Machias 4th Jul 4; Machias, Maine; parade at 6 p.m. followed by fireworks at the dike

Independence Day GLS; Jul 4, DLLT, race for Grand Lake Stream, 3 mile foot race, beginning at the shores of Big Lake, and ending in the village; afternoon parade, and then grab a tube and float down the river. FMI visit info@downeastlakes.org

LAMPS Summer Concert Series Jul 6; 12-2 pm; South Water St; Lubec; Hymn for Her"

continued on page 32



Specializing in Coastal Maine Real Estate

 <p>Samra Kuseybi (207) 214-7401</p>	 <p>Libby Bryant (207) 461-9170</p>
 <p>Shirley Erickson (207) 255-6043</p>	 <p>Aaron Currier (207) 200-1697</p>

Call us today to start your home buying or selling journey with one of our expert agents!

877-350-4409 www.tcgre.net



The Raye's Mustard Story

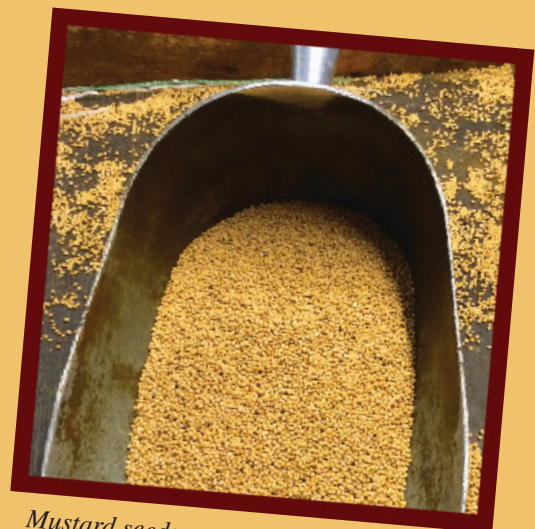
by Karen Raye

Some things are so tied to place you just can't imagine one without the other. That's the way it is with Raye's Mustard and Eastport, Maine.

In 1900, Eastport is where 20-year-old J. Wesley Raye started making mustard to serve more than two dozen sardine factories in Eastport and countless others dotting Maine's coast. In 1903, alongside the Maine Central Railroad, he built a mill around a series of quartz grindstones imported from France and powered by Second Industrial Revolution machinery, the very same stones and machinery that are still in use today.

Maine's once-dominant sardine industry is long gone but, like Eastport itself, Raye's Mustard has persevered. Named by MaineBiz Magazine as one of the Top 10 Iconic Maine Products, Raye's award-winning gourmet and specialty mustards are now popular across America and beyond. And Raye's Mustard Mill in Eastport is now North America's last remaining traditional stone ground mustard mill.

No visit to Eastport is complete without a stop at Raye's Mustard Gift Shop at 54 Water Street in Eastport's historic waterfront downtown.



Mustard seeds



Delicious Raye's Mustard.



Raye's Mustard Mill is the last remaining traditional stone ground mustard mill in North America. Pictured above is the grindstone used to create mustard for over a century now!

GRAND LAKE STREAM



The reflection of celebration at Grand Lake Stream.

Photo by Julie Keyes

Little Falls Recreation Area Located two miles southeast of town, accessed by Water Street; public access area managed by Maine IF&W, and provides great access to the stream to fish

Middle Walk & Childrens Canal A wooded walkway alongside the canal; each year the canal is stocked with brook trout for children's fishing only (15 and under)

Downeast Land Lakes Trust has eleven water-accessed sites on several area lakes and streams. Two sites on Rolfe Brook are drive-up only, about four miles west of town, both are available for day-use and camping. Each site has a privy and picnic tables. Camping at DLLT sites is free, available on a first-come basis; three -night maximum stay. Campfires are allowed with a permit from the Maine Forest Service at (207) 827-1800.

Tennis, Pickleball & Basketball Courts located off of Milford Road (before you get into town); open to the public, visit the GLS Chamber of Commerce website FMI: grandlakestream.org

Geocaching the DLLT Geocache Challenge consists of 25 geocaches placed in different areas throughout the Downeast Lakes Community Forest; sites highlight the local history, ecology, and geology of the Grand Lake Stream region. Find the list under the title "dlltgeochallenge" by visiting www.geocaching.com

Swimming available at the town beach, located off of Shaw Street

Fishing & Hunting a destination for fishing and hunting since the first "sports" hired Passamaquoddy guides in the 1800s. The Community Forest is open to the public and adheres to all federal and state laws. Regulations and licenses are available online or at the Pine Tree Store. Find a Registered Maine Guide to lead your next adventure at grandlakestreamguides.com

Historic Museum Open Sundays or by appointment. Memorial Day to Labor Day 1-3 pm

Fish Hatchery Operated by Maine IF&W, the Grand Lake Stream Fish Hatchery was established in 1936. Call (207) 796-5580 to schedule a tour.

Fly fishing West Grand Lake has more than 14,000 acres of clear stream-fed waters. It has been regulated as fly fishing only since 1903 and the salmon for which it's famous follow the smelt up river each spring, in waters that anglers dream about. Of course, there are other lakes as well, including Big Lake and Love Lake, where trout, bass and togue are plentiful. Hire a fishing guide to help you improve your casting and find the best spots.

Hiking and Camping There are an abundance of hiking trails, day use and camping areas in Grand Lake Stream. See the Trails and Camping sections for more information.

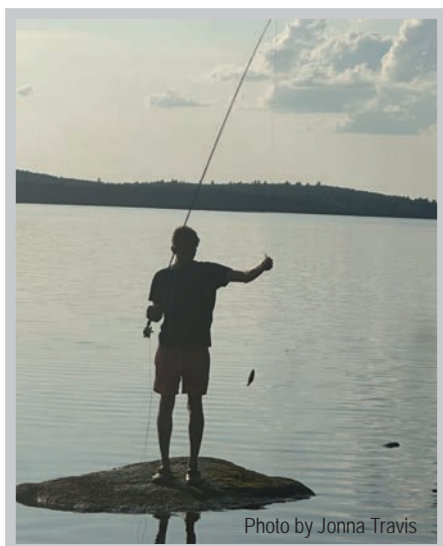


Photo by Jonna-Travis

Grand Lake Stream Area Chamber of Commerce

Traditional Sporting Camps

Country Inns • Lakeside Cottages

40,000 acres of connecting

lake and river systems

Tour fish hatchery and museums

grandlakestream.org



BARING, ALEXANDER, BAILEYVILLE & PRINCETON

Pocomoonshine Lake Boat Launch from Calais go north on US Route 1/US-1 N towards Baileyville; continue to follow US-1 N, pass through the roundabout, (9.15 miles), turn slight left onto S Princeton Rd., (2.30 miles), S Princeton Rd becomes Woodland Rd. (2.13 miles), Woodland Rd becomes Lake Rd., (0.34 miles), Pocomoonshine Lake Boat Launch; your destination is just past Seamans Rd. If you reach Shore Dr you've gone about 0.1 miles too far.

Lawrence Lord Old Farm Museum 1260 Airline Road, Alexander; two barns full of unique and interesting farm tools, lanterns, wagons and antiques; farm museum is open by chance, and a suggested donation of \$5 is always nice. If you are interested in this unique museum visit Lawrence Lord & Sons Inc (next door) or call (207) 454-2612

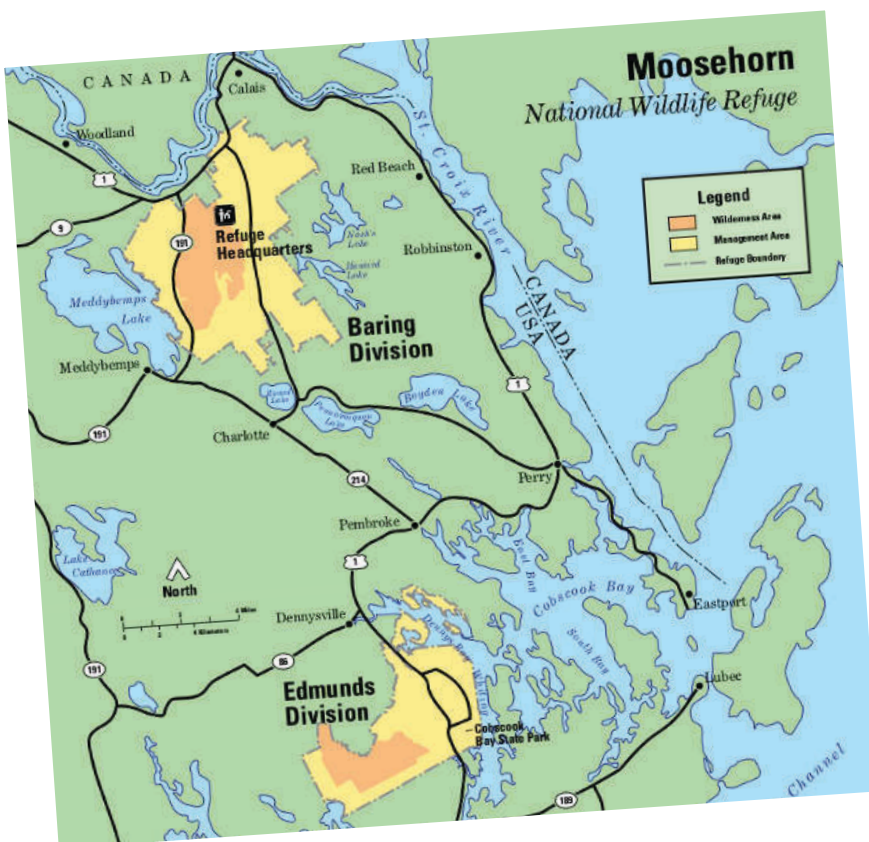
Pleasant Lake Campground 371 Davis Rd, Alexander, 04694; swim area / beach; FMI check Facebook page

Passamaquoddy Cultural Heritage Museum 197 Rte 1, Princeton, Maine; open Mon - Thurs, 10am - 3pm; see artifacts of Passamaquoddy, birch bark baskets, woven baskets, beadwork and much more.

Woodland Parks and Recreation Department part of the town of Baileyville - offers a variety of activities for children and adults. Tennis, pickle ball and basketball courts, softball and baseball fields can all be found around town. FMI see the Facebook page.



ART TRAIL 70 Barrows Lake Road, Alexander, features a large, hand-carved, outdoor sculpture collection; For more information look up the Alexander Art Trail on Facebook or www.arttrail.net



Moosehorn National Wildlife Refuge is a northern treasure in the National Wildlife Refuge System at 103 Headquarters Rd, Baring. It consists of nearly 30,000 acres of federally protected lands. The refuge provides nesting, feeding and breeding habitats for many different species, from tiny golden crowned kinglets to black bears and bobcats. Visitors can enjoy the refuge by car, foot, bike or horseback. A large portion of the refuge is a designated wilderness area, and provides an escape from the chaos of modern life. Hiking trails provide access to remote areas of the refuge. See the Trails section or website for more info. <https://www.fws.gov/refuge/moosehorn>

DSF's Dennys River Sportsman's Club

-- Changing from Clubhouse to Public Pavilion

By Downeast Salmon Federation



The Denny's River Sportsman's Club dates back almost 100 years to 1936. In 1965 members built the clubhouse and large stone fireplace themselves.

non-profit. The Club selected DSF to become the long-term steward in 2015. The Dennys River Sportsman's Club was a founding member of the Downeast Salmon Federation - along with three other local salmon clubs in 1982.

The clubhouse was saved from dilapidation thanks to a generous grant from the Ram Island Conservation Fund of the Maine Community Foundation and DSF member donations. We contracted Eric Holm, of Holm Inspections LLC in Lubec, to transform the old log cabin clubhouse into a pavilion in the 2023 winter/2024 spring. The walls were compromised by rot and Eric and his assistant, Devin Byrne, craftily saved what they could. A metal roof was installed and the walls replaced by locally donated cedar posts that support the structure with custom "knife brackets" made by Larry Balchan. DSF's Land Steward, Mike Sloan, put the finishing touches on the pavilion and installed new signage for the Preserve thanks to funding by the Maine Community Foundation's Washington County Fund.

The pavilion overlooks the Dennys River and is connected by gravel road and trail to the rest of the preserve for recreational activities such as hiking, picnicking, bird-watching, fishing and hunting. The pavilion is open to casual picnics and activities, but is also available

by prior arrangement and donation for scheduled events, weddings, reunions, retreats and meetings through our office. There are no amenities or facilities at this location, and visitors should follow the "Pack-it-in, Pack-it-out" policy when visiting this preserve. Please visit the Dennys River Preserve page for more information about the surrounding conservation preserve.

As the landowner and steward of the property, DSF aims to keep the tradition of outdoor "sporting" alive, restore sea-run fish to the Dennys River, and sustainably manage the riparian habitat. A conservation easement was established in 1995 by Club officers and is now held by Downeast Coastal Conservancy. The easement limits development of the property; it does, however, allow for future construction of an Atlantic salmon hatchery!

DSF is continuing the tradition of providing a community gathering place at the Dennys River Sportman's Club, now a DSF Preserve, in Dennysville, Maine. The open-air pavilion was completed in 2024.

The Dennys River Sportsman's Club dates back almost a hundred years to its founding in 1936, when the Dennys River was known as "the outstanding fly-fishing Atlantic salmon river of the nation" and the Club acquired 750 members from all over the country its first year. The historic Dennys River Sportman's Club (Club) was unique compared to others in Maine, in that they allowed any fisherman, whether a member or not, to fish on Club property. In the 1950's, Club members built the clubhouse themselves and constructed a large stone fireplace in 1965. Over the decades, salmon numbers declined and membership dwindled. When maintaining the club was no longer feasible, and following their by-laws that the property would "never become independently owned", the Executive Committee members were left with a choice of turning it over to the State or to another



The DSF's Dennys River Sportsman's Club was rehabilitated in 2024 and is now a picnic pavilion with a concrete floor and a stone masonry hearth fireplace and metal roof.



Complimentary canoes are provided at Robinson's Cottages to enjoy the Denny's River

Smithereen Farm 4 Leighton Point Rd, camping accommodations, pick berries at the farm, join a seminar or event or check out their website for more information greenhorns.org or email office@greenhorns.org



Lincoln Memorial Library 17 King St, Dennyville, hours: Mon: 4-7, Tue: 1:30-4, Fri: 1:30-4; FMI call (207) 726.4750

Dennys River from the outflow of Meddybemps Lake in Meddybemps, the river runs about 23 miles southeast and east to Dennyville; where it becomes tidal and soon joins the Hardscrabble River estuary to form Denny Bay. An Etchemin tribe arrived first by coming up the winding Denny River from the coast and set up camp on shore, west of the rapids.

Reversing Falls is an unusual phenomenon on the coast, whirlpools, and turning tides in Pembroke, Maine. The walking trail begins at the eastern parking lot, continues along the wooded shore, two spur paths lead off the trail onto peninsulas that provide varying views of the falls and a panorama of Cobscook Bay. Directions: Take Route 1 to Pembroke; turn east onto the extension of Route 214, (immediately beside the construction spot of the new Freshies); turn right at the stop sign, take an immediate left up a small hill onto the Leighton Point Road; continue 3.3 miles, then turn right onto Clarks Road; continue for 1.2 miles; at the end of Clarks Road, turn left onto a dirt road and continue for 1.5 miles to the parking area.

Atelier LaForest Gallery located at 3 Cemetery Rd, Dennyville, the building boasts a beautiful gallery space. For info on upcoming exhibitions or to see the in house collections email melindajaques620@gmail.com.

Patrick Lake Boat Landing Picnic area (for day use only) and privy at Patrick Lake; take coastal US Rte 1; turn right on Route 86 at the Denny's River, follow the winding road, and Patrick Lake is on the right.

Sawyer Observatory America's most easterly observatory; several different types of telescopes including reflectors and refractors; FMI email Charlie Sawyer csawyer7@roadrunner.com

www.theinternationalmotel.com

Free WiFi • Pet-Friendly
Clean • Comfortable

Walking distance to Dining,
Shopping, Hiking trails

1 (800) 336-7515

THE INTERNATIONAL MOTEL
626 Main Street
Calais, Maine 04619
207-454-7515
1-800-336-7515

Celebrate the Sweet Tradition of Maine Maple Syrup

By Jayna Smith

Every fourth Sunday in March, the Maine Maple Producers Association invites all to celebrate Maine Maple Sunday. Sugarhouses across the state open their



doors, offering visitors the chance to tour, learn about the maple syrup-making process, and enjoy one of Maine's most cherished products. Notably, Maine ranks among the top three maple syrup producers in the nation.

According to the Maine Maple Producers Association, the practice of making sugar and syrup from the sap of the

sugar maple tree originated with the Native Americans of the Northeast. For them, maple sugar was an essential seasoning, used much like salt today. It was also a vital food source in early spring—so valuable and portable that it often served as currency. The annual sugar harvest was celebrated with festivals, feasting, and merriment once the last elm bark bucket had been emptied and a year's supply of sugar safely stored.

European settlers quickly recognized the value of this natural resource and learned the process from Native Americans. In exchange for their knowledge, settlers introduced iron kettles—an innovation that revolutionized syrup production. Before the arrival of Europeans, fireproof vessels were unavailable in Eastern North America, and Native Americans boiled sap by dropping red-hot stones into thick wooden containers.

The appreciation for maple sugar extended far beyond New England. Thomas Jefferson made several attempts to establish a "sugar bush" at Monticello, the Maine Maple Producers Association website notes, and there were even efforts to start a maple syrup industry in Europe. However, all of these attempts failed. While the trees thrived, they didn't produce the desired sweetness. The key to maple sap's sugar content lies in the unique weather conditions required for its production—warm, sunny days followed by below-freezing nights, which occur for extended periods in

Maine's gradual, lingering spring.

While the Native methods for producing maple syrup have evolved, the desire for the local Passamaquoddy people to be with nature has not. The

tribe currently provides high-end, small batch maple syrup in Jackman that not only sustains its tribal land, but also creates jobs for their people. Learn more at passamaquoddy.com.

In Calais, maple syrup is made at Maple Lane Sugary on Route 1 in Robbinston (only producing for friends and family and no longer selling product). In the opposite direction, Chandler's

Sugar Shack is located on Route 6 in Kossuth Township, near Topsfield. Finally, on the other end of the county, is Church's Sugar Shack on Route 1 in Columbia Falls. All three can be found on Facebook.



Putting the taps in the sugar Maples.



Collecting the sap.



A nice hot fire in the evaporator to turn the sap into syrup.

Photos courtesy of Maple Lane Sugary

ROBBINSTON

During the mid-19th century, Robbinston was a last stop for the Underground Railroad where escaping slaves would cross over into Canada and freedom. One of the houses that supported them still stands, the John N. Brewer Sr Mansion. Built in 1785 with an addition added around 1821, it is on the National Register of Historic Places. The John N. M. Brewer Jr House built in 1826 is across hwy 1 and is now operated as a B&B. Other historical sites in Robbinston are the Grace Episcopal Church, James S. Pike Racing Milestones, Pulpit Rock, Henrietta Brewer Cottage (wife of John Brewer Jr) (Redclyffe Shore Motel) and Sewall Memorial Congregational Church, with its roots in 1817.

Boyden Lake Boat Launch is located on the Ridge Rd, .8 miles past Hilltop Campground **Elton R. Brooks Memorial Rest Area** on Rte 1. There is a picnic area; outhouse; boat launch; beach access; views of St. Andrews, New Brunswick, Canada

The Edge Gallery 685 US Route 1. Peter Johannes - multi-disciplinary artist- writer, sculptor, photographer; award-winning author; is the owner/operator of The Edge Gallery. FMI call (207) 436-3473 or email moc.asu@sennahojretep

Robbinston Historical Society is a nonprofit organization; visitors' center located on Route 1 next to the Grace Chapel, available for event rental; FMI call (207) 454-3455 or visit <https://townofrobbinston.org>

Hilltop Campground 317 Ridge Rd. camping, playground, pool, rec hall, planned activities, Trout pond paddle boat rentals, horseshoe pits, basket ball court; FMI call (207) 454-3985 or visit <https://www.hilltopcampground-maine.com>

Mill Cove has been a popular picnic spot for well over a century. In the past, high school classes and social groups often took steamship to Robbinston to spend the day at Mill Cove; today one must drive.

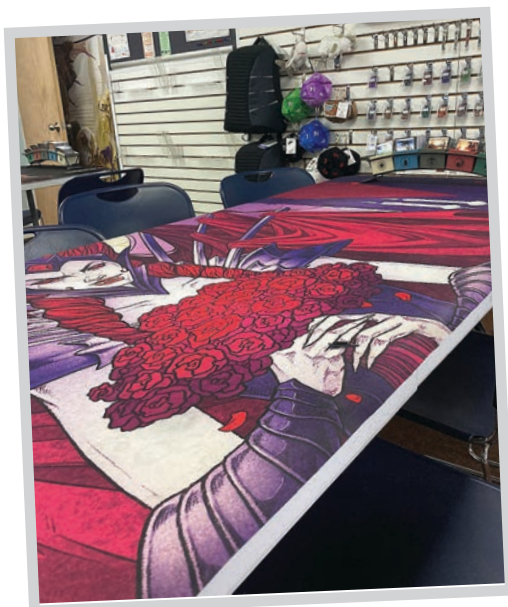


Pulpit Rock One mile out from the shoreline of Mill Cove this unique formation is a single mass of red sandstone that is 38 feet high and only 18 feet at the base. The top of the rock is 21 feet in diameter and has hearty plants living on it. Be sure to check the tide chart and time your hike with low tide, as the tide can leave you stranded, (meaning you must swim with the tides to return)



Photo by Amie Flowers

MACHIAS



Mahoney Gaming Emporium 4 Main St, Suite 2, Machias; a public space to utilize board games (free), shop for Magic, Star Wars Legion and Dungeons & Dragons or Pokemon official cards and events; get lessons on gaming or meet people with like interests, FMI call (207)814-8112 www.mahoneygamingemporium.com

Wild Blueberry Land 1067 US Hwy 1, Columbia Falls; Wed-Sun, 9am-2pm; museum and shop; FMI visit <http://www.wildblueberryland.com>

Sunrise Canoe and Kayak guided trips on the Machias River; Maine master guides, 20+ years experience; custom itineraries available for large groups; delivery system for canoes and kayaks to numerous lakes, rivers and bays of the region; St Croix River expeditions are also available; they have a base camp at Cathance Lake; call (207) 255-3375 or visit www.sunrisecanoeandkayak.com or www.sunriseexpeditions.com

Historic Railroad Station 2 Kilton Ln, Machias; historic railroad station near the junction of Court and Main Streets; built in 1898; one of five surviving stations built by the ambitious but unsuccessful Washington County Railroad. The station is used as a visitor center and community meeting space.



Bad Little Falls Park bridge and platform over Machias river, overlooking waterfall; short path; Machias grange; open year-round at the intersection of Rtes 1 & 192 www.downeastfisheriestrail.org

Porter Memorial Library 92 Court Street, Machias; public hours: Tues – Fri, 10am to 5 pm; Sat 10 am - 1 pm; www.porter.lib.me

Burnham Tavern dates back to the American Revolution; filled with artifacts; the Daughters of the American Revolution give tours; call for reservations



Pictured above is the sandy beach of Roque Bluffs State Park

Photo by Jessica Griffin

Roque Bluffs State Park 274 acres on Schoppee Point (south of Machias); coast of the Atlantic Ocean; 274-acre state park overlooks Englishman Bay from Schoppee Point and includes 60-acre Simpson Pond and six miles of walking trails; inspect glacial striations attesting to the Ice Age history of the Maine coast. The park is managed by the Maine Department of Agriculture, Conservation and Forestry.

Roque Bluffs Community Center Roque Bluffs; all are welcome; some programs you'll find at the community center are Barre Workout, Line Dancing, Yoga, watercolor painting, and photography. During the year the organization also hosts an Annual Quilter's Show in June, Artists and Crafters shows, and gallery exhibits. FMI see the Facebook page or call Bob McCollum – bob81848@msn.com or 207-263-8579

Hickey Island Located near the entrance to Little Kennebec Bay, Hickey Island is a quiet 12 acre oasis of open meadows, rocky shoreline, and gravel beaches. Visitors to the island typically come ashore on the northern gravel beach.

MACHIASPORT

Jasper Beach Machiasport; rocky shoreline; singing rocks, since (they create a melodic tone when the tides move); the beach is backed by fresh and saltwater lagoons and a salt marsh

Gates House 344 Port Road (Maine State Route 92), Machiasport; museum built in 1807; listed on the National Register of Historic Places in 1975; FMI <https://www.machiasporthistoricalsociety.org>

Fort O'Brien State Historic Site Machiasport; constructed in 1775, the fort is open to the public as a state park during the summer months; overlooks the site of the first naval battle of the Revolutionary War, June 12, 1775, between the British armed schooner *Margaretta* and the colonist's sloop *Unity*, which emerged victorious.

JONESBORO

A town in Washington County, incorporated on March 4, 1809; previously known as Chandler's River. Hannah Westin, and her sister, carried 50 pounds of lead through the woods from Jonesboro to Machias to support the effort to capture the British vessel *Margaretta* in 1775.

Barren View Golf Course Jonesboro, Maine (Machias Bay area); nine-hole, par 35 course plays to 5,622; driving range, putting green, practice sand trap, Pro Shop, snack bar, electric carts; late April – Nov. 1st; FMI call (207) 434-6531

Hatch Knoll Farm 29 Hatch Knoll Rd., Jonesboro, Maine; a small diversified family farm specializing in award winning Goat Milk Cheese, Blueberries, Pasture raised meats; open by chance, baby goats, and home to Garden Side Dairy and Woodland Oasis Camping; FMI call (207) 434-2674



A fishing town neighboring Beals Island, Jonesport offers quiet nature trails and scenic vistas complete with colorful lobster boats bobbing in the harbor. Jonesport stakes its claim as home to the world's fastest lobster boats. The Annual Lobsterboat Races are posted in the calendar of events. Ask the locals to tell you about Tall Barney, one of the town's colorful characters, perhaps on a local boat tour charter. There is also a public boat launch if you wish to ply the waters of Moosabec Reach yourself. Drone photo by Laurie Churchill

Downeast Institute Black Duck Cove, Great Wass Island; Year-round (M-F 9-3); Since 1987, the Downeast Institute for Applied Marine Research and Education has worked with fishermen to enhance populations of marine species that sustain the Downeast Maine economy. With

sters, all in partnership with fishermen and growers. Tour the hatchery or learn how the Institute engages students of all ages in their work at the annual Shellfish Field Day. FMI call (207) 497-5769 or visit www.downeastinstitute.org

Maine Coast Sardine History Museum- Jonesport; open from the third Sunday in June through Sept; Tues through Fri and Sat from 12 - 4 pm.

Jonesport Historical Society Sawyer Building at 21 Sawyer Square; open to visitors from May to Oct; discover the history of the area; FMI call (207) 497-3003 or email jonesporthistoricalsociety@peabody.lib.me.us




Kyle Pepperman gives tours of the institute, shown here is where they grow the algae to feed shellfish. DEI uses various different methods to circulate water and feed the young clams, oysters, mussels, and scallops.

origins in the development of methods to raise and grow soft-shell clams, the Downeast Institute for Marine Research and Education has provided juvenile or "seed" clams to replenish clam flats in more than 60 Maine coastal towns and has expanded to study hard clams (quahogs), European oysters, Arctic surf clams, sea scallops, and lob-




The Scissor Wall is a tribute to all of the sardine packers, originals used by the ladies in the factory, with their names displayed.



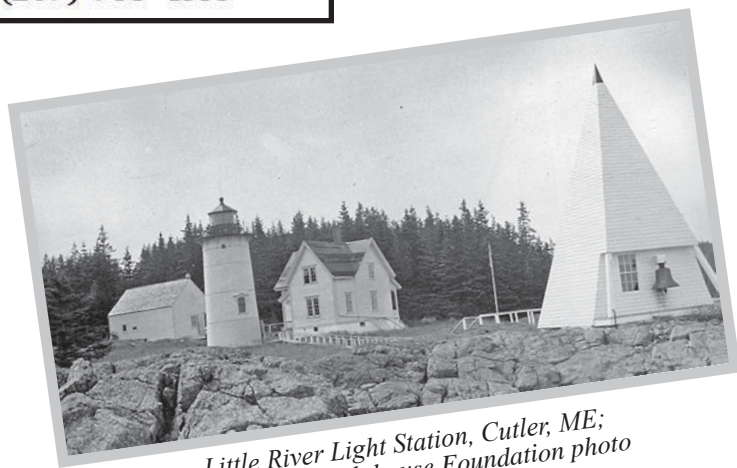

16 Loon Lane,
Lubec Maine 04652

www.westquoddygifts.com

LOCAL BEER,
LOCAL CHARACTER



43 WATER STREET, LUBEC
(207) 733-4555



*Little River Light Station, Cutler, ME;
American Lighthouse Foundation photo*



*Perched atop the rocky black cliffs of the bold coast, Quoddy Head State Park
Photo by Nicole Michaud*

Stockford Park is a park located on Lower Water Street. The park features a stage, the "Beyond the Horizon" sculpture by Valerian Jikia, a picnic area and a view of Campobello Island, NB. Free concerts are held during the summer. FMI see the Facebook page.



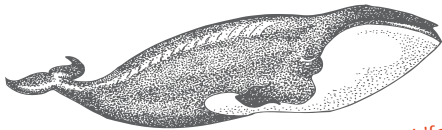
Lost Fisherman's Memorial The names of the lost fishermen are honored on the park's Wave sculpture created by Jesse Salisbury. Lost fishermen who perished in the waters of Washington County, Maine or Charlotte County, New Brunswick, or fishermen that lived in those two counties and were lost in other waters while fishing are displayed. The list also includes those lost since the year 1900.

Gateway Campobello Island International border crossing; the largest and only inhabited island in Campobello, New Brunswick, Canada. The island was originally settled by the Passamaquoddy Nation, who called it Ebaghuit. It's only highway, Route 774, is connected by the Franklin Delano Roosevelt Bridge to Maine – the easternmost town in the continental United States. The only transportation link with the rest of Canada is a seasonal ferry service to Deer Island Point, New Brunswick.

Mowry Beach Take U.S. Route 1 to Lubec village, bearing right on Washington St, take third right onto Pleasant St. (just before the International Bridge) and continue to the end (0.3 mile) to the beachside parking lot and trailhead; 48-acre Mowry Beach Preserve; convenient public access to one of the easternmost sandy beaches in the country. Situated along the edge of the village; this location protects 1,800 feet of shoreline along a 1.2 mile beach overlooking Lubec Channel and Campobello Island. Within the inland portion of the preserve, a 1,700 foot wooden boardwalk passes through coastal-scrub woodland and skirts a sphagnum bog and cattail swamp. Along the lower portions of the beach at low tide, the remains of ancient tree stumps can be seen indicating the location of a primeval forest. This preserve was acquired with the support of the Land for Maine's Future program in 2004.

Little River Lighthouse Cutler, Maine; FMI visit www.littleriverlight.org/

See the Trails and Camping sections as well for many other points of interest in these towns.



Canadian Whale Institute Marine Life Interpretation Centre on Mulholland Point, Campobello Island; education on North Atlantic right whale biology, research and conservation, as well as local marine life on the Bay of Fundy shore.

Mulholland Point Lighthouse 1B4, Narrows Rd, Welshpool, NB, Canada; built in 1885, Mulholland Point Lighthouse overlooks the narrow Lubec Channel between Lubec and Campobello

Carriage Roads & drives a variety of scenic views; bike along: soft and hardwood forests, salt water coves, sand and gravel beaches, cliffs, offshore islands, and an array of migratory birds and wildlife. Vegetation is allowed to remain close to the road to retain the original character of the drives. Please note the carriage roads are not suitable for campers, buses, or recreational vehicles.



Roosevelt Campobello International Park NB, Canada; park is open May-Oct. The park is a singular example of international cooperation - jointly administered, staffed, and funded by the peoples of Canada and the United States. Franklin and Eleanor Roosevelt's magnificent summer home is preserved here in a combination indoor museum and outdoor nature park.

Sunsweep sculpture along the Racoon Beach trail; aligned to trace the sun's path; only three in the world, spanning across North America; all three carved from a single slab of polished Canadian black granite, all three laser etched, an image of a woman's hand (traced by concentric rings fanning to resembling a topographical chart,

each ring becoming more circular to form a perfect circle with the last ring); along the Racoon Beach trail; Roosevelt Campobello International Park's Sunsweep sculpture features an arc of polished granite truncated with a rough granite edge at the high point of the arc, which faces inland. Sculptor, David Barr John 1939-



Free tuition for qualifying Maine students – that's our Downeast Promise!

Maine residents may qualify for free tuition up to 30 credits per year.

APPLY FOR FREE TODAY

machias.edu/admissions/downeast-promise



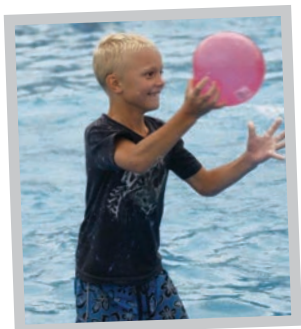
The University of Maine System is an equal opportunity institution committed to nondiscrimination.



East Quoddy Lighthouse Head Harbour (or East Quoddy) Lighthouse, built 1829; accessible by land (only at or near low tide) by a road between the north end of the island and Wilson's Beach. The first lighthouse constructed in New Brunswick outside of the Saint John Harbour; provides a daymark for navigating the St. Andrew's portion of the Bay of Fundy; various steam whistles, signal guns, and lamps to help aid navigation; the oldest surviving lighthouse in New Brunswick; received classified status from the Federal Heritage Building Review Office

What to do SUMMER CAMPS

CALAIS RECREATION DAY CAMP from 7:30 am - 4:30 pm for ages 6 years and up; weekly fee; includes swim lessons; and field trips and other activities. FMI call (207) 454-2761 or email calaisrec@calaismaine.org



Calais Day Camp Fun

DOWNEAST LAKES LAND TRUSTS CHILDREN'S AND FAMILY PROGRAMS happening all summer long, events vary each year. Past events have included camping, tours, crafts, geocaching, and many more public events in the 57,703-acre Downeast Lakes Community Forest. Stay tuned to www.downeastlakes.org, and follow Downeast Lakes Land Trust on social media for further details. To register for an event or FMI, email info@downeastlakes.org, or call (207) 796-2100

UNIVERSITY OF MAINE 4-H CAMP & LEARNING CENTERS

at Bryant Pond and Greenland Point coed; resident; many different types of camps such as leadership, woodcraft, wilderness survival, art exploration, aqua adventure, naturalist, warden, fishing, conservation, science adventure, hooked on bass, hunter appreciation, and others, 1-6 weeks; ages 6-18; FMI call (207) 665-2068 or visit umaine.edu/bryantpond or umaine.edu/greenland-point.

OUTDOOR SKILLS CAMP June 23-27; 9 am - 3 pm; grades 6-8; Cobscook Institute, Trescott; Learn and practice basic skills to keep you safe and fun in the woods and on

the water; learn basic canoe skills; mess around building shelters in the woods; visit some of Washington County's amazing wild places; hike, hang out on beaches and swim; gather wood and learn to build fires, with s'mores of course; learn about "Leave No Trace" ethics and techniques, build personal camp stoves & survival kits; FMI visit <https://cobscookinstitute.org>

CANOE CAMP July 7-12; grades 7-9; learn canoe skills, wilderness camping skills, food cooked on an open fire, participants sleep in tents, swim, fish, journal, and play games; FMI visit cobscookinstitute.org

DOWNEAST TEEN LEADERSHIP CAMP July 21-25; Cobscook Institute, Trescott; in-person; grades 7-9; DownEast Teen Leadership Camp (DETL) is Healthy Acadia's annual, five-day residential summer camp program for teens entering grades 7 through 9. DETLC primarily serves the youth of Washington County Maine, though teens from Hancock County and beyond are also welcome. DETLC offers five action-packed days filled with games and team building activities, amazing motivational speakers, and daily workshops focused on social issues that are important to you, like tackling peer pressure, substance use, embracing diversity, and more.

And, of course, it wouldn't be summer camp without a pizza party, s'mores, and bonfires! FMI call (207) 255-3741 or e-mail me at sara@healthyacadia.org

ST CROIX RIVER ADVENTURE

July 14 - July 19; ; grades 9-12; On this 6-day 5-night canoe trip, participants will explore the

Downeast Lakes and camp at some of the most iconic flatwater and whitewater stretches of the Skutik/St. Croix river. The trip begins with flatwater paddling on Spednic Lake to get accustomed to paddling and camping as a group. You will learn canoe skills, scout and run class I and II whitewater rapids, and enjoy the company

of other participants. Food will be cooked on an open fire. Participants will sleep in tents, have a chance to swim, fish, journal, and play games in their free time. No previous camping or canoeing skills are needed, just a willingness to embrace new experiences in wild places. FMI call (207) 255-7348 or visit cobscookinstitute.org

YOUTH SAILING CAMP: Introduction to Sailing choose from the following date and location options: Keene's Lake, Calais Jul 21 - Jul 25 or Indian Lake, Whiting Jul 28 - Aug 1; rising ages 9-17, 10 am-3pm; beginner class for children; promoting positive experiences on the water and while sailing. cobscookinstitute.org



Sailing Camp held at two locations in the area.

WATERSHED EXPLORERS STEM CAMP

Jul 21-25; 9 am - 3 pm; grades 7-9; Join this unique camp - jointly offered by Cobscook Institute and Downeast Salmon Federation - to have a hands-on, outdoor watershed science experience. Monitor alewife in local rivers, collect eDNA samples from

fish, assess the health of streams and rivers through biological and chemical sampling, Learn about how drones are used to monitor the health of watersheds, and how scientists assess landscapes to understand what's healthy for humans and wildlife. There's an option for a weekend overnight adventure at Downeast Federation's historic Wigwams Camp on the Wigwam Rapids on the Machias River.

CAMP EAGLE WING Gardner Lake, Marion Township, Maine; traditional summer camp; coed; 150 acre; 75 campers; 25 staff members from all over the country; 1 to 6 weeks; FMI visit <http://www.campeaglewing.com>

EDGE SUMMER CAMPS Washington County students can register for five, week-long day camps running from the end of June to the end of July; K5 - 8th grade; outdoor exploration, sports, technology, cooking, crafts and field trips are some topics in years past; FMI call (207) 546-4466 or visit <https://www.seacoastmission.org>

YOUTH SAILING CAMP: Intermediate Sailing, Indian Lake, Whiting Aug 4-8 10am-3pm; ages 9-17; class for children; promoting positive experiences on the water and while sailing. cobscookinstitute.org



4-H Wilderness Survival Camp at Greenland Point

Orange River Water Trail Boasts Paddling, Camping, Picnicking, and Wildlife Watching

By Downeast Coastal Conservatory

The Orange River Water Trail, located in the town of Whiting, is an easy to access, easy to paddle 9-mile flat-water trail including miles of fresh water teeming with wildlife. Paddlers have multiple access points and can begin their adventure towards the top of MCHT's Rocky Lake Preserve or by using the day use boat launch managed by IF&W at the end of Halls Mill Road to access Rocky Lake. Featuring miles of lakeshore, Rocky Lake is a fantastic place to load your canoe or kayak with camping or fishing gear and start exploring. Outdoor enthusiasts can extend their trip spending a night at one of the two reservable lakefront campsites or continue their journey portaging into Orange Lake for a day use picnic site provided by DSF or reserve an overnight stay at the Orange Lake Campsite, ideal for group camping.

The adventure can continue downstream through the Orange Lake Outlet and into the Orange River. The marshes and wetlands that fringe the river provide excellent habitat for nesting ducks, as well as beavers, muskrat, otters, mink and many other kinds of animals. The shoreline of the water trail has several designated day-use areas to enjoy picnicking, wildlife watching, and relaxing. DCC maintains paddle-accessed hiking trail leading to the summit of Estey Mountain, which offers stunning views of Roaring Lake and the surrounding wild landscape; and maintains two additional two established campsites on a first-come, first-serve basis. Paddlers can take out at Cobscook Shores' Reynold's Brook Picnic Area or continue to a hand-carry access point at Playhouse Lane.

The Orange River Water Trail is brought to you by a partnership of organizations including: Maine Coast Heritage Trust, Downeast Coastal Conservancy, Cobscook Shores, Downeast Salmon Federation, and Maine Dept. of Inland Fisheries and Wildl-



EASTPORT

SHACKFORD HEAD STATE PARK on Moose Island, the 87-acre state park occupies a peninsula separating Cobscook Bay and Broad Cove. The land is named for John Shackford, an American Revolutionary War soldier who once owned the headlands. The park is managed by the Maine Department of Agriculture, Conservation and Forestry. Offers hiking trails.

Raye's Mustard is North America's last remaining traditional stone-ground mustard mill. Four generations of the Raye family have been grinding mustard since 1900, when 20-year old J. Wesley Raye founded the business to produce mustard for Maine's burgeoning sardine industry

Festivals Eastport has a variety of festivals throughout the year including Independence Day "Old Home Week"; Pirate Festival, Salmon Festival, Downeast Pride, Mermaid Festival, Witches of Eastport and more. Check out the calendar of events FMI

Off Leash Dog Park Deep Cove Rd off Rte 190, the park is on the left before the entrance to Cony and Shackford Head State Park; waste station and users are required to pickup after use



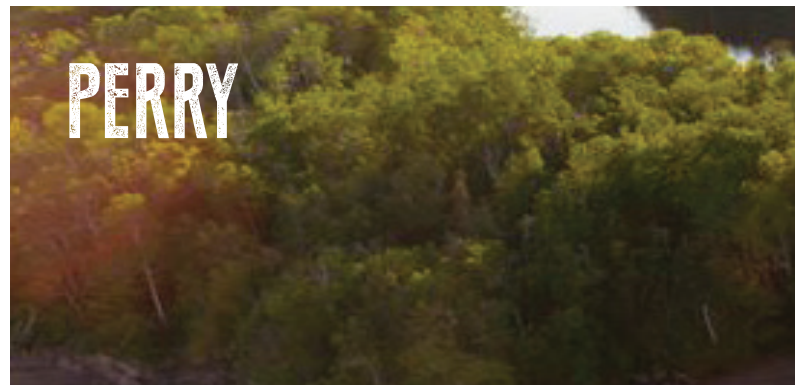
Sculpture Trail "Nature's Grace," by Canadian artist James Boyd, is situated right along Water Street in downtown Eastport. It is one of a number of public art pieces along the waterfront.

Tennis & Pickleball

Pickleball is the fastest growing recreational sport in the U.S. Eastport has a thriving community league with over 50 players; 14+ sessions a week offered at Eastport Elementary School; drop-in sessions several times a week at the new outdoor tennis and pickleball courts at Shead High School; visitors at all levels welcome; equipment to loan.

... to get out on the water, to delight in our many festivals & events, to shop & dine along our historic waterfront & to discover our rich history, nature & culture.

visiteastport.com



45th Parallel Marker A small roadside park found on US Rte 1 first marked the halfway point between the equator and North Pole with a brass pin in 1896, made by the Maine Red Granite Company in Red Beach, Maine. It was placed and dedicated in 1899, on the 4th of July, making it the first such marker in the U.S. Maine is just about in the middle since the 45 degree line (or 45th parallel) splits the state almost at its midpoint. Latitude is expressed in degrees, minutes, and seconds. Each degree represents about 60 nautical miles or 69 statute miles (our common land measure).

Food If you arrive in the "off" season, it can be hard to find restaurants open. Many places are seasonal and don't open until very late May. **The Farmers' Union** located at Perry Corner - 966 US Rte 1; open year round with a meat deli, beer, wine, fresh produce and other grocery. **The Polar Treat** is a seasonal A-frame building located 816 US Rte 1, famous for ice cream, but offer seafood takeout, burgers and more. **The Lobster Crate** located at 243 County Rd (the road headed through Sipayik), open for breakfast and lunch. Mainly Smoked Salmon has salmon sticks sold in a variety of quantity and flavors, salmon dip and more.

Quoddy Crafts crafts by local artists; funding goes to historical preservation efforts and the Border Historical Society; antiques; locally-made items at reasonable prices

Eastport Arts Center theater, art, music, film, education and community outreach; available for rental; an array of programs for children and adults. They collaborate with the Eastport Gallery; the Northern Lights Film Society; Passamaquoddy Bay Symphony Orchestra; Quoddy Voices and Stage East. Check out the concert series, seminars, Kinder Arts, ecstatic dance, yoga and much more, call (207) 853-4650 or visit: <https://eastportartscenter.org>

Overlook Park & Sutherland Amphitheater on Eastport's waterfront; where the Wilbur Theater once stood is a stone amphitheater that hosts musical and other events. The Park also makes a great place to sit and watch the workings of Eastport's Harbor, the waters of Passamaquoddy Bay, and Canada's Campobello Island, while enjoying a meal or snack purchased from a local business

Whale Watch or Day Cruise Eastport Windjammers offers whale watches, lobster cruises, deep sea fishing trips, private cruises; call (207) 853-2500 or visit www.eastportwindjammers.com

Water Taxi take a ride on the water, if the tide is up get dropped off at Treat Island, explore the trails and have a picnic.

Art Galleries Water Street has a robust arts scene, with over a dozen galleries to explore.

The **Barracks Museum**, moved from its original site, was one of the barracks buildings from Fort Sullivan.

Original site of Fort Sullivan, which was renamed Fort Sherbrooke by the British when they took control of it in 1814. In 1818, Moose Island, Eastport and the fort were returned to the US and it was once again known as Fort Sullivan.



Cony Park A large pavilion with picnic tables, outdoor musical instruments, horseshoe pits, and a hand carry boat launch



Passamaquoddy Cultural Heritage Museum photo

Waponahki Museum & Resource Center 59 Passamaquoddy Rd, (upstairs from the Sipayik Youth Center) Phone (207) 853-2600, ext. 227. Hours of operation 1 pm to 4 pm Monday - Thurs and every 2nd Sat; FMI visit www.wabanaki.com



Sunflowers at Gleasons Photo by Joan Lowden

Gleasons Cove Take US Rte 1, to the Shore Rd, to Gleason Cove Rd. There you will find a gravel beach, swing set, picnic area; Passamaquoddy Bay, including Gleason Cove, Western Passage, and Deer Island in New Brunswick, Canada. View traditional fish traps made of sticks and brush (herring weirs) that lead migrating herring along a maze-like fence into an enclosure, they are netted and transported to shore with small boats. The vertical sticks of the weirs still stand, but the weir may or may not be active, depending on the season, year, and the whims of the herring.

If These Walls Could Talk

195 Main St, Calais

If the walls of 195 Main Street in Calais could talk they would probably tell you about plenty of food, staff shenanigans, and regulars that build connections and come to feel like family.

Ed Williamson's Fish market was built in 1951 and eventually became a restaurant featuring fried clams and fish and chips. An Article in the Calais Advertiser written by Carol Obliskey in 1960 described the Seafood Market and Delicatessen as "specializing entirely in fresh fish. The only time the market will deal in frozen fish is when a customer demands it. The specialty is lobster meat which is furnished to local restaurants in great quantities. The delicatessen, owned by Ed

Williamson, will also serve clams, lobster rolls or any other seafood tidbit which suits your palate."

In 1961 Ollie Olsson took it over. Mr. Olsson renovated and renamed the location to the Angelholm Restaurant paying homage to his hometown in Sweden. The Calais Advertiser article on the grand opening announcing the new place to dine out was designed for pleasant and informal meals. The restaurant featured a lunch counter as well as

booth seating. The Angelholm also offered takeout service in the rear of the building. It was an excellent location fulfilling a need for a place to eat on the North side of town and easily accessible to Canadians coming across the bridge.

The corner building housed Sweet Williams for less than a year, and then from 1998 until 2009 Carmen's pizza took up residence.

Today the location continues to operate as a restaurant under the name of Jo's Diner and Pizzeria. Jo's opened in 2009 serving up pizza, sandwiches, dinners and more. Breakfast and delivery options were added within the year to better serve the community. The name Jo's is in honor of family relatives (a sister and brother-in-law) who shared their knowledge of cooking.

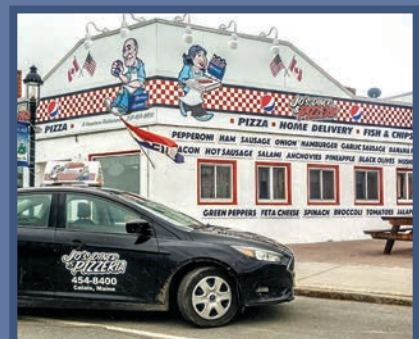


Restaurant Angelholm Opens
The Restaurant Angelholm opened its doors to the public last week introducing a new place to dine out in Calais designed for pleasant and informal meals. The restaurant is owned and operated by Mr. and Mrs. Bror Olsson. Shown in the above photo on opening day are: Mrs. Thornton, Martha Elliott, Lorraine Hay, Margaret Jackson, Cecile Coleman, Rosita Scott, and owner Ollie Olsson.



Jo's Diner staff take promoting their pizza seriously!

195 Main St Through the Years



continued on page 30

The Art of Beach Combing in Maine

Beach combing, or sea glass hunting, is a popular activity in Maine, especially during winter when fewer people are on the beaches. The art of beach combing involves searching for treasures like sea glass, sand dollars, and driftwood, often in the areas where the tide has retreated. The Maine coastline, with its rocky beaches and rough waters, creates a perfect environment for sea glass formation.

Beachcombing Tips:

Timing is key: Low tide exposes more of the beach, making it a great time to search.

Look along the water's edge: This is where you're most likely to find sea glass and other treasures.

Be patient and persistent: Beach combing can be a rewarding experience, but it requires patience and a willingness to search thoroughly.

Respect the environment: Leave the beach as you found it and be mindful of wildlife.

Know your location: Some beaches are better known for specific treasures, like sand dollars at Long Sands Beach in York.

Consider your location: The best beaches for sea glass are often rocky and exposed to waves.

Look for specific treasures: Sea glass, sand dollars, driftwood, and other marine debris can be found on Maine beaches.

Enjoy the process: Beach combing is a relaxing and meditative activity, allowing you to connect with nature.



What Fishing and Hunting to do



Ice fishing is a great family fun activity for all ages!
photo by Carrie Cropley

Down East Maine is well known for its great fishing and hunting - a true sportsman's paradise. Taking part in these activities require a license, but those are easy to get all over the state, from convenience stores to sporting goods stores and online.

The area boasts freshwater and saltwater fishing. With thousands of miles of river and streams and hundreds of freshwater lakes in addition to the vast ocean, you can constantly find new places to fish and species to go after. The variety of fishing available Down East makes the sport easy for everyone in the family, young to old, novice to skilled because reeling in a wriggling fish on the end of a line is a thrill enjoyed by all! No experience is necessary and local outfitters offer basic fishing gear and instruction to equip you and your family for a Maine fishing adventure. You can also hire a Maine guide for a guided fishing excursion, all your supplies are provided, and your only job is to dress warmly and be patient. There are numerous guides in the region,

most operating as small independent businesses that offer highly personal, customized experiences.

The Down East area is noteworthy because of the wide variety of angling experiences it offers. Anglers can choose among coldwater and warmwater fisheries in lakes, easily accessible and remote wilderness-type waters, wading or fishing from a canoe for wild brook trout in streams, as well as heading out into the ocean for saltwater catches. Numerous waters offer good fishing for one or more of 9 species of sportfish; landlocked salmon, brook trout, lake trout (togue), brown trout, splake, smallmouth bass, largemouth bass, white perch, and pickerel. The region boasts one of the top 10 salmon and togue lakes in Maine (West Grand Lake), one of the top 5 riverine fisheries for salmon (Grand Lake Stream), some of the very best smallmouth bass angling in the state, and the premier lake for whitefish in eastern Maine.



Photo by Brewer Andrews



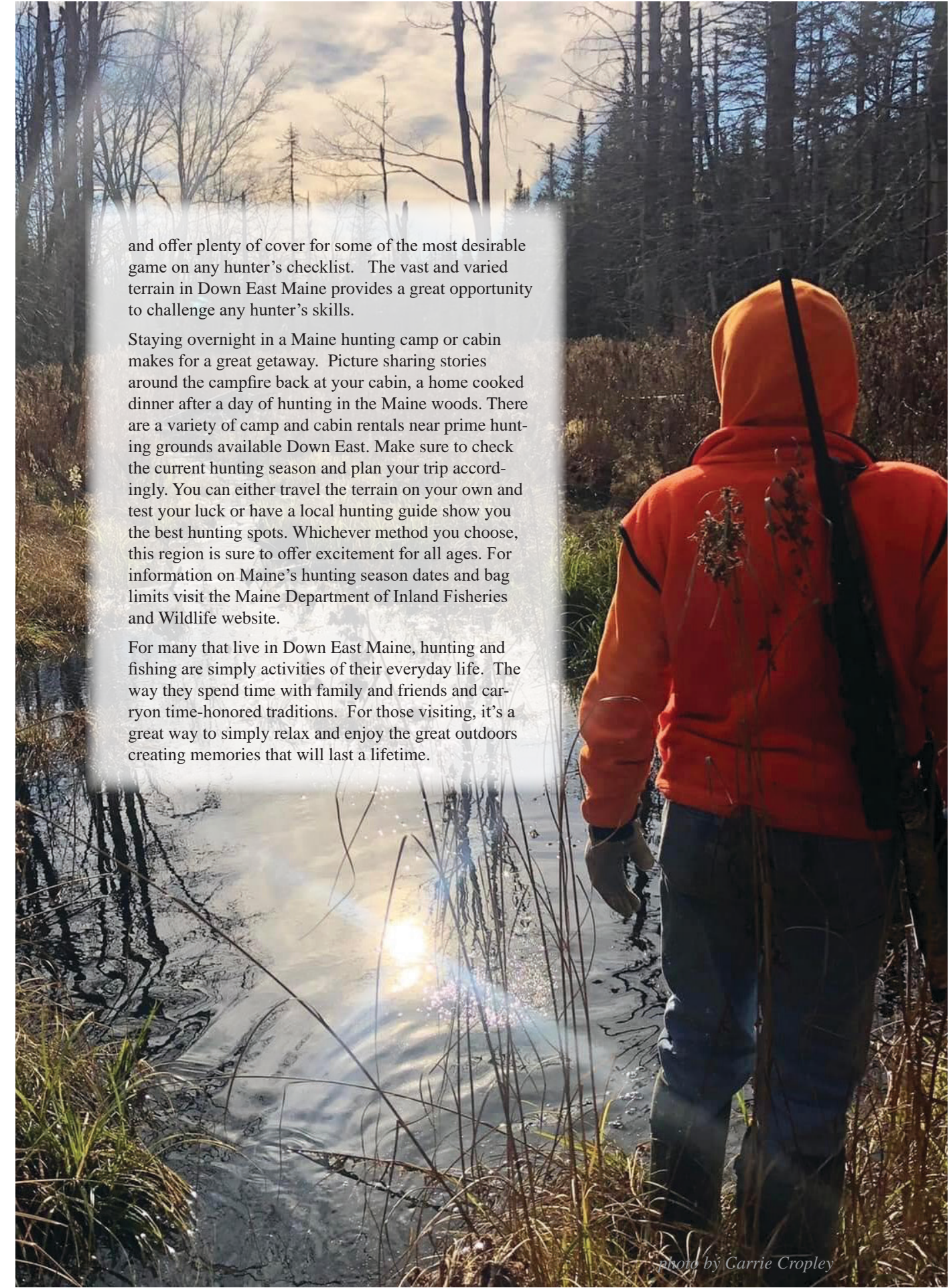
Photo by Duane Andrews



Moose hunting success!
photo by Duane Andrews

And when winter hits, there's no reason to put away your bait and tackle just because it's cold outside because in this area we love ice fishing as well. Spending time on a frozen lake with friends and family is one of the best ways to have fun and (hopefully) catch dinner in the winter. Ice fishing begins on Jan. 1 and lasts until March 31. Ice fishing derbies are a great way to see if you like ice fishing. Derbies are a fun way for the community to gather and enjoy all that winter in Maine can offer. Round pond in Charlotte was home to two derbies in 2024. In January the Calais Lions Club hosted a derby and in February the Calais Rod and Gun Club hosted a derby. Check their social media pages or websites for upcoming derbies in 2025, or the Maine Inland Fisheries and Wildlife website also has a page listing all derbies statewide.

Hunters are drawn to Down East Maine for its reliable, varied and superb hunting. Moose, black bear, whitetail deer and wild turkey, snowshoe hare, ruffed grouse, woodcock, partridge and other upland game birds all call the Maine woods home. The area's untouched forests and thousands of acres of unpopulated terrain make it a dream destination for hunters



and offer plenty of cover for some of the most desirable game on any hunter's checklist. The vast and varied terrain in Down East Maine provides a great opportunity to challenge any hunter's skills.

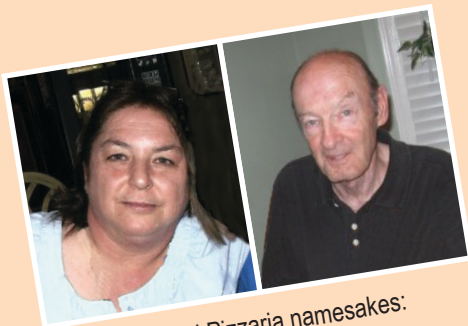
Staying overnight in a Maine hunting camp or cabin makes for a great getaway. Picture sharing stories around the campfire back at your cabin, a home cooked dinner after a day of hunting in the Maine woods. There are a variety of camp and cabin rentals near prime hunting grounds available Down East. Make sure to check the current hunting season and plan your trip accordingly. You can either travel the terrain on your own and test your luck or have a local hunting guide show you the best hunting spots. Whichever method you choose, this region is sure to offer excitement for all ages. For information on Maine's hunting season dates and bag limits visit the Maine Department of Inland Fisheries and Wildlife website.

For many that live in Down East Maine, hunting and fishing are simply activities of their everyday life. The way they spend time with family and friends and carry on time-honored traditions. For those visiting, it's a great way to simply relax and enjoy the great outdoors creating memories that will last a lifetime.

photo by Carrie Cropley

If These Walls Could Talk - **195 Main St, Calais**

continued from page 26



Jo's Diner and Pizzeria namesakes:
Joanne Cook and Joseph Fern

complete sauce recipe from Carmen. Our sauce is a little sweeter. People have seemed to like it over the years."

The cartoon characters for Jo's Diner are inspired by these two as well. Within hours of the the sale of the business from the previous owner the staff were on location, accepting food deliveries and promptly getting to work making dough, grinding cheese and reventing the sauce.

As owner Tim Crowe explains, "we didn't have the

Jo's Diner frequently contributes pizzas

to the little league and offers special rates to businesses in town, highlighting the community-oriented philosophy that

has endrued through each incarnation of the restaurant. "We don't get real rich but we make a lot of friends and we move a lot of pizza," owner Tim Crowe shares. "My team really enjoys serving the community. Looking back over the years at what we have been able to provide, especially during the pandemic, makes us really proud to be a part of our community giving back and filling a need."




The Jo's Diner pizza eating contest is a long standing tradition at the International Homecoming Festival.




From the Angelhom era to current day at Jo's Diner - this little corner building in Calais has been a spot for connecting, sharing a meal and probably more than a few tall tales!





Calais

305 North St.
(207) 454-7518
Calais, ME





Sunrise Canoe and Kayak

~since 1996~



Canoe the lively St. Croix River or sea kayak historic Machias Bay!

- Half and full day trips led by master Maine guides
- Beginners, families, and large groups welcome

Book your adventure today!

207-255-3375 ★ 877-980-2300

www.sunrisecanoeandkayak.com

@sunrisecanoeandkayak

168 Main Street, Machias, ME






From Pavement to Trails, Bold Coast Runners Embrace the Challenge

By Jayna Smith

A passionate group of local runners has been making strides in Washington County and beyond since 2017. The Bold Coast Runners, an affiliate of the Road Runners Club of America, was founded by a dedicated group of runners who wanted to bring together a community of like-minded individuals. Their organization closely resembles the Sunrise County Roadrunners, a premier running club that flourished from the early



photo by Bold Coast Runners



photo by Bold Coast Runners

1960s through the 1990s.

The club is comprised of runners of all abilities, from beginners to seasoned marathoners, and its members are spread throughout Washington and Charlotte counties, shared Phil Krajewski. The Bold Coast Runners host weekly group runs at various locations and organize road and trail races in some of the region's most scenic areas, including the Boyden Lake Loop and Cobscook Bay Road Races.

Describing themselves as a "welcoming, encouraging, and supportive group of crazy people," the Bold Coast Runners embrace the rugged

and unpredictable nature of running in Downeast Maine. Whether it's hot, rainy, snowy, or icy, they run—sometimes in snowshoes or with spikes, always committed to the sport they love. Distances vary from short one-mile runs to endurance-testing 50-mile treks, covering everything from smooth pavement to rugged single-track trails.

The group meets most Sundays for runs in various locations throughout coastal

Washington County, as well as across the border in Hancock County or Charlotte County, New Brunswick. The time and location for each run are determined by the group leader, ensuring variety and accessibility for all members.

For those looking for camaraderie,

See the Bold Coast Runners web-page for information on local races.

In April 2025 the inaugural Boyden Lake Half-marathon was organized by the Bold Coast Runners. Proceeds from the event benefit veterans organizations and each year the event will be dedicated to a local veteran.

adventure, and a commitment to the joy of running, the Bold Coast Runners offer an opportunity to be part of a thriving and dedicated community. "All abilities are welcome to join us," said Krajewski. Membership fees are \$20 for adults and just \$5 for students 17 and under.

Interested? Check out the website for registration info www.boldcoastrunners.com.

Getting Around

EAST COAST FERRIES

Deer Island - Campobello Car Ferry
www.eastcoastferriesltd.com
Eastport Lubec Ferry (207) 853-2635
(Breakwater Pier)
Downeast Water Taxi (207) 904-8029
(Breakwater Pier)
Eastport Windjammers (207) 853-2500
(104 Water Street)

AIRPORTS

Bangor Airport (866) 359-2264
Bar Harbor Airport (207) 667-7329

BETWEEN CALAIS & BANGOR:

West Bus Service: public bus service between Bangor and Calais. Major stops between Calais and Bangor include Perry, Machias and Ellsworth. Flag stops are located in Pembroke, Dennysville, Whiting, Jonesboro, Columbia, Milbridge, Gouldsboro, Sullivan and Hancock. FMI (800) 596-2823
www.westbusservice.com

BETWEEN BANGOR & PORTLAND:

Concord Coach Lines: (800) 639-3317
concordcoachlines.com
(bicycles stored below the coach if there's room)

BETWEEN PORTLAND & BOSTON:

Concord Coach Lines: (800) 639-3317
concordcoachlines.com
(bicycles stored below the coach if there's room)
Amtrak Downeaster: (800) 872-7245
amtrakdowneaster.com
(purchase bike ticket, loaded in luggage car)

CAR CHARGING STATIONS

Tesla Supercharger - 5 Walton Dr, Brewer, ME • 1941 Medway Rd, Medway • 32 Houlton Rd, Baileyville • The Algonquin Resort, 184 Adolphus St., St. Andrews • Ganong Nature Park, 350 Todd's Point Rd, Dufferin • Rossmount Inn Hotel Restaurant & Bar, 4599 Route 127, St Andrews, NB
EV Connect Station - 143 S River Rd, Calais ChargePoint Station 626 Main St, Calais

What to do

EVENTS & FESTIVALS

continued

continued from page 10

Robbinston Days July 19 10 - 2;
Music, Touch-A-Truck, Children's
activities, Historical display, Food, Bake
Sale; Robbinston Community Center;

Loon Count with Maine Audubon Society;
Jul 19, 7 am on West Grand Lake. FMI on
helping: mikeremillard42@gmail.com

Puckerbrush Primitive Gathering; Jul 19-21;
Pleasant River Fish & Game Conservation
Assoc, Columbia; celebration of traditional
archery, bushcraft, art, outdoors, and ances-
tral skills; "hands on" event, kids encour-
aged to get their hands dirty; food options
available. Bring a musical instrument for
afterward! FMI <https://www.prfgca.org>
Grand Lake Stream Folk Art Festival; Jul 26-
27; Grand Lake Stream, Maine; music, folk
art, crafts, activities; FMI call (207) 796-8199
or visit <https://grandlakestream.org/events>.

LAMPS Summer Concert Series Jul 27.
12 pm; South Water St; Lubec; Bob Judd
Memorial Concert featuring Bailey's Mistake
and O'McCrelli

AUGUST

Summerkeys Concert; free admission; mid
Jun through Aug, Wednesdays, 7:30 pm;
Congregational Christian Church, Lubec;
www.summerkeys.com

**Community Dinner, Game Night & Fiber
Circle**; free home-cooked meal, games,
music and fiber; First Monday of the month
5pm-8pm; FMI cobscookinsitute.org

New Brunswick Day Aug 1; celebrations
– beginning at 8 am at the St Stephen
NB waterfront; the first Monday of Aug;
Campobello Island Fog Fest Jul 30-Aug
3; Campobello, NB. Five days free music
performances, art and cultural events.
Admission FREE; FMI visit <https://campobellofogfest.org>

National Mustard Day in Eastport, Aug 2.
Celebrate the 125th anniversary of Raye's
Mustard with limited edition mermaid
mustard, tastings and events all day. FMI:
www.rayesmustard.com

Mermaid Festival; Aug 1-2; Celebrate our
creative connection to the sea. Mer-
maid Ball at the Eastport Arts Center on
Friday evening, Aug 1. Float making, art
activities, live music, and the 4th annual
Mermaid Parade all day Saturday, Aug 2.
FMI: www.eastportartfests.org

International Homecoming Festival, a
celebration of the friendship between Calais,
Maine and St. Stephen, New Brunswick, has
been held since 1974. This year, the festivi-
ties are set for Aug. 6-10, 2025, with events
taking place on both sides of the border,
including concerts, kids' activities, vendors,
fireworks, and the International Grand
Parade, starting on one side of the border
and ending on the other. FMI, visit facebook.com/internationalhomecomingfestival.

Peanut Fair and Doll Hospital, held Wednes-
day as part of the International Homecoming
Festival, behind Calais Elementary School,
uses plastic peanuts that can be purchased
and used for games to win prizes. Kids are
encouraged to bring their sick or injured
dolls and stuffed animals for the "doctors"
and "nurses" at the Calais Community Hos-
pital Doll Hospital. This well-attended event
is hosted by the Calais PTO as a major
fundraiser for the group. FMI, visit CES PTO
on Facebook.

**St. Croix Valley Chamber of Commerce
Street Fair** takes place every year in Calais
on "parade day" of International Homecom-
ing Festival. Vendors of all sorts line Main
Street with wares for sale, and it includes
the Calais Lioness Club's Super Draw, a
raffle with over 100 items available to win.
FMI, email visitstcroixvalley@gmail.com.

LAMPS Summer Concert Series Aug 10.
12 pm; South Water St; Lubec; Jazz in the
Park"

Passamaquoddy Ceremonial Days; yearly
the 2nd weekend of Aug, Passamaquoddy
Tribe Pleasant Point, Maine; ceremonial
dance, canoe trips, crafts, demonstrations.
Admission FREE; FMI call (207) 853-2600
or visit www.passamaquoddy.com

Machias Wild Blueberry Festival, held since
1976 and set for this year for Aug 15-17
(rain or shine), celebrates all things blueber-
ries. Crafts, food, entertainment, contests,
a musical, and more, there is something for
everyone to enjoy. FMI call (207) 255-6665
or visit machiasblueberry.com.

Downeast Fall Migration Birding Festival;
Aug 17-18, celebrate the fall migration
downeast, with expert local guides, this
festival focuses on shorebirds, gulls and the
migration. Local expert guides make this a
wonderful and intimate festival; register at
cobscookinsitute.org

Washington County Fair; Aug 23-24; 222
Old County Rd, Pembroke Fairgrounds;
Childrens games, face painting, train
rides, craft/food vendors, chance raffle,
bounce house, balloon man, music, tractor
pulls, demonstrations, livestock judging..
Sponsored by Pembroke Trotting Associa-
tion. FMI see the Washington County Fair
Facebook page.

continued on page 40

**EASTPORT
SALMON
& SEAFOOD FESTIVAL**
Catch it if you can!

**Our 37th year!
Labor Day Weekend
August 30-31**

Saturday - crab rolls, smoked salmon tastings, historic home tours
Sunday - salmon dinner, boat rides to salmon pens, raffle
All weekend - live music, local beer, wine, food trucks,
fine craft vendors, all-ages interactive activities

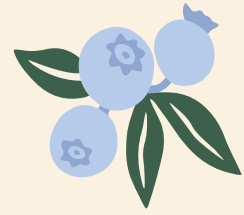
Cooke
USA

visiteastport.com/salmon



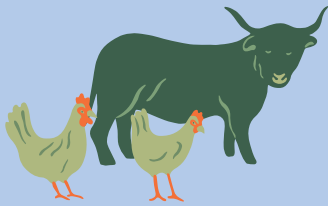
Visit

EATDOWNEAST.COM



LOCAL FOOD MAP OF WASHINGTON COUNTY

MORE THAN 140 LOCAL FARMERS & FARMSTANDS, EATERIES, SEAFOOD & SEAWEED PRODUCERS, FARMERS' MARKETS, BAKERIES, RETAILERS AND MORE!



LOCAL FOOD AND AGRICULTURE EVENT CALENDAR

FESTIVALS, FAIRS, WORKSHOPS, MEET-UPS, AND CELEBRATIONS OF OUR LOCAL FOOD CULTURE



RESOURCES FOR LOCAL FOOD PRODUCERS

ARE YOU A WASHINGTON COUNTY FARMER OR FOOD PERSON?
WE OFFER FREE BUSINESS COACHING, RENTAL SPACE IN SHARED COMMERCIAL KITCHEN, A LOCAL PRODUCER MAILING LIST, AND MORE!



SCAN FOR OUR DIGITAL MAP OF WASHINGTON COUNTY FOOD PRODUCERS—PERFECT FOR YOUR ROADTRIP DOWNEAST!

Eating local is the adventure!



THE trails HIKING

PERRY

The 1.8-mile [Sipayik Trail](#) extends across the Passamaquoddy Native American reservation at Sipayik, (also known as Pleasant Point), Maine. The paved trail overlooks scenic views at various points as the river watershed transitions to salt marsh and then to Passamaquoddy Bay.

Access to the [Lincoln Cove Preserve](#) is via Birch Point Road. From U.S. Route 1 southbound just past the Perry Town Office, turn left onto Cannon Hill Road. After 1.6 miles, turn right on Birch Point Road, and continue 0.9 miles. The property is on both sides of the road, with limited parking and an informational kiosk on the right, just across from the woods road that leads left to the shore. There are no formal trails.

Explore [Sipp Bay's](#) 1.5 miles of trails, a short loop in the south and a longer, more forested excursion to the north. Both offer great views of the rugged coastline. Access to the preserve by taking US Route 1 in Perry to the Burby Road. Follow the Burby Road 0.75 miles onto the peninsula.

BARING

[Moosehorn Wildlife Refuge](#) is home to five hiking trails with access on Rt 191 in Baring, have narrow footpaths that are minimally maintained. Bring a map and compass while exploring trails because they can be difficult to follow at times. FMI www.fws.gov/refuge/moosehorn

[Woodcock Trail](#) 0.3 miles; a short paved loop trail; handicap accessible, This trail has a particular focus on the requirements for the protected American woodcock.

[Greg's Pond Trail](#) 1.0 mile; trail contains grassy pathways and elevated wooden walkways for wet areas; trail passes by Greg's Pond, great for wildlife viewing. The low canopy and overhanging brush will be sure to keep you cool.

[Charlotte Trail](#) 0.7 miles; a short path through flowering fields and forest. This trail can be a loop or connected with other nearby trails.

[Raven Trail](#) 1.4 miles; this moderate trail has hilly terrain, high dense canopy cover,

and a dense understory. This is a great option if you're looking for something more than a brisk walk. Schedule: open year-round, some activities are seasonal; hours: daily from 1/2-hour after sunrise to 1/2-hour before sunset; FREE; pets welcome; (207) 454-1700

[Conic Trail](#) 3.4 miles; back trail located in Baring, take Rt 1., to Rt 191, look for Moosehorn National Park trail signs on the left

GRAND LAKE STREAM

[Little Mayberry Cove Trail, GLS](#) - mossy, single-track trail; approximately 2.5 miles along the western shoreline of West Grand Lake. Trail begins at the dam at the head of the Stream. Walk a short distance along the gravel camp road and follow the trail over moderately rolling terrain, with occasional viewpoints along the shore ending at a quiet cove. Hikers can return on the same trail, or loop back via interior logging roads.

[Pocumcus Lake Trail](#) - Trail provides options for short or moderate loop hikes to undeveloped shoreline of Pocumcus Lake. Shorter loop is 1.3 miles round trip, while those who hike the entire trail cover 3.6 miles. The trail traverses a wide range of forest habitats. Hikers can expect to hear a variety of songbirds and loons as they approach the lake. The trailhead is located on the north side of the Fourth Lake Road about 7.5 miles west of Grand Lake Stream.



Wabassus Mountain Trail - 1.0 mile climb to the summit, the Wabassus Mountain Trail follows a small cascading seasonal brook, and passes through forest. The trailhead is on the Wabassus Mountain Road, with access from the north via the Fourth Lake Road, or the south via the Little River Road and Third Lake Ridge Road.

Dawn Marie Beach Path - DLLT's shortest trail at 0.25 mile: path leads you from a raspberry patch by the side of the road to an undeveloped beach on Wabassus Lake. It's a great spot for a family picnic, or to cool off if you worked up a sweat on the way up Wabassus Mountain. Even here, a completely undeveloped sand beach is a rare commodity. Take the Fourth Lake Road west from Grand Lake Stream for 3.6 miles, and turn left on the Wabassus Mountain Road. Pass a side road on your right, and then look for the trailhead sign on your right.

Storybook Trail - Leaving from DLLT's future headquarters at 214 Milford Road, this 0.6-mile trail winds through a cedar-filled forest with wooden signage along the trail that depicts children's stories that tell of the natural and cultural history of the region. Be sure to visit multiple times, as the stories change throughout the year. The trail intersects at the Tower Hill Trail, forming a 3.5-mile loop option from the heart of Grand Lake Stream.

Tower Hill Trail - Located atop Tower Hill, the Grand Lake Stream fire tower was built in 1934, and is the oldest enclosed wooden fire tower remaining in New England. DO NOT attempt to climb the tower, due to

safety concerns. Parking is at the West Grand Lake Dam. Follow the snowmobile trail (orange tags) east, as it winds up the hill. From the tower, the trail begins 100 yards to the north, and heads east, winding 1.1 miles through mixed woodlands to Bonney Brook Road. After crossing Bonney Brook Road, the trail meanders along shallow Bonney Brook Lake. Upon reaching the road again, turn right and follow the road for 50 yards, then turn left, continuing along the trail. The trail ends at a camp road called "Pappy's Way." Turn left and follow the snowmobile trail back up Tower Hill, creating a 3 mile loop.

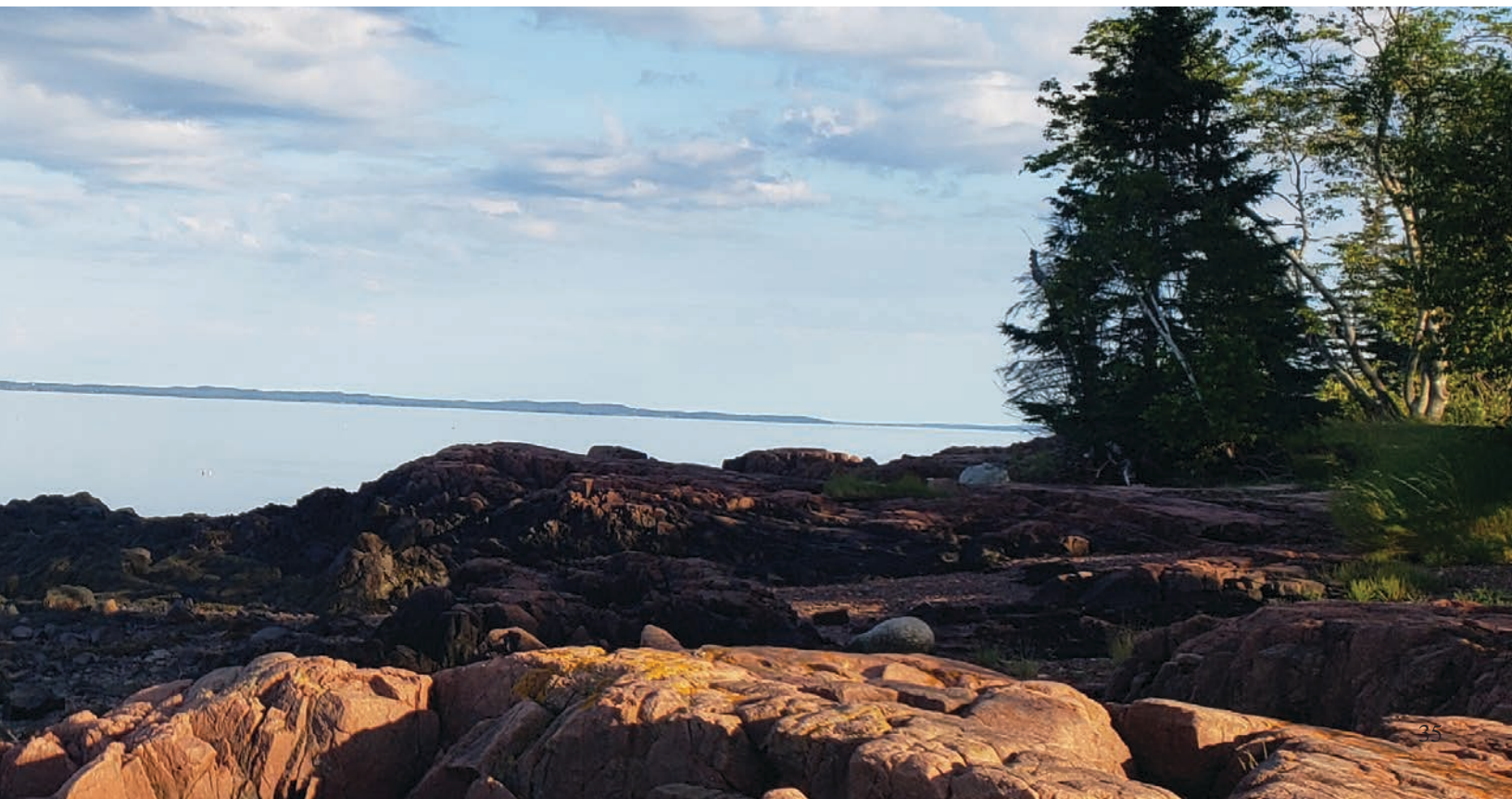
Trail to Tomorrow - Inspired by a 1957 essay by John R. Schaefer, an interpretive and educational walk through several distinct forest types. A round-trip loop of 0.6 miles, leaves from the end of Tough End in the village of Grand Lake Stream (parking is available at



Students from Lee Academy breaking the new trail at Horseshoe Lake.

the West Grand Lake Dam).

Musquash Esker Trail - located on the north side of Milford Road, roughly 5.5 miles east of Grand Lake Stream; from the parking area, travel along the former "Talmadge Road," built along a glacial esker, 1.4 mile (2.8 round trip) trail ends at Big Musquash Stream, and offers gorgeous views of Amazon Mountain and more than 5,000 acres of pristine wetlands.



THE trails HIKING

Dobsis Narrows Trail - Located in Lakeville, this hiking trail follows the shore of Sysladobsis Lake and ends at a campsite. Future plans include extending this trail to loop back to the road, but it's currently an in-and-out 0.3 mile hike. Recreationists will have almost 360° views of the lake, and will likely hear loons calling.

Horseshoe Lake Trail - turn off the East Shore Rd in Lakeville onto West Shore Drv, and park at the intersection with Horseshoe Lake Rd.; a boat launch for Horseshoe Lake is under construction. Follow the launch path and begin hiking on the west side. This easy-walking trail parallels the pristine lake and then cuts back to the Horseshoe Lake Road. Hikers will find two benches for resting or lunch along the trail. Trail length is 0.4 miles one-way.

Pineo Peaks Trail - a remote section of the Community Forest located within ecological reserve. Head north on the Amazon Road for 8 miles, turn left onto the Pineo Point Road and drive for 1.6 miles. There are two trailhead access points from the parking area. The left trailhead leads to a 1.3-mile hike (round-trip) up to Pineo Peak, climbing a ridge with partial views of West Grand Lake. You can explore unique geological formations of granite ledges, small crevasses, and extensive caves and rockfalls. The right trailhead leads to the lake. It parallels the shore for 1.6 miles, crossing Oxbrook Stream, and ends at the Princeton Island campsite.

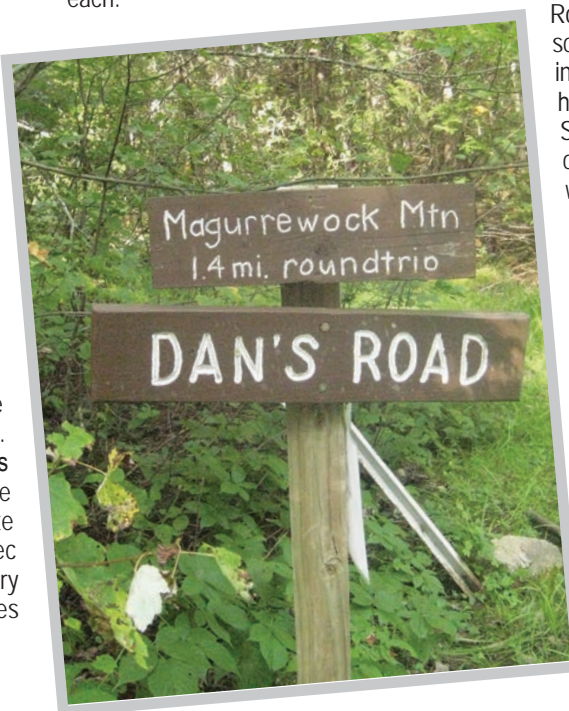
EASTPORT

Located between Eastport and Lubec; **Treat Island** is a 1.2 mile network of trails; monument where American Revolutionary War Col. John Allan is buried; both Lubec and Eastport have municipal boat ramps, which offer all-tide access for hand-carry and motor boats. Small boats can land easily on the island's southern shore on either side of the dike between Treat and Dudley Islands. Despite close proximity, access from both Lubec and Eastport is made challenging by very strong currents and an average 22 foot tides in this part of Passamaquoddy Bay.

Matthews Island is a short trail that leads across the island, accessed via a right-of-way that begins at the end of Deep Cove Road. The right of way leads through private property and over a bar to the island (exposed at low to mid tides). From the intersection of Route 1 and Route 190 in Perry, take Route 190 for approximately 5.5 miles into Eastport. Turn right on Deep Cove Road and continue 1.6 miles. Park at the end of the tar road on the right. Follow the gravel drive 0.2 mile to the footpath that leads through the field to the exposed bar. Please respect the privacy of the landowners, stay on the path, and do not dawdle on your way to the island. Access to the island is also possible from the water, with the ideal landing spot on the southern side of the bar that connects Matthews with tiny Sumac island.

CALAIS

Magurrewock A few miles north of the refuge headquarters on the outskirts of Calais is Magurrewock Mountain, a 384-foot peak accessed by a one-mile trail. To the south, Bells Mountain and Crane Mountain in the Edmunds unit of the refuge offer two fun loop hikes just shy of a mile each.



Devil's Head Conservation Just off Rt 1 in Calais, the 315-acre conservation has approximately three miles of moderate foot trails, a dirt road loop running from the road to the waterfront. Devil's Head itself is a 340-foot-high granite cliff overlooking the St. Croix River. Schedule: April - October; hours: sunrise to sunset; FREE; Pets: Welcome; (207) 454-2521; calaismaine.org/devils-head

PEMBROKE

Hersey Point Preserve 1.5 miles, Round Trip; moderate; a 28-acre preserve on the peninsula separating Hersey Cove from the Pennamaquan River offers a short hike through woodland to a quiet, sheltered cove and gravel beach, with a spur leading to a nearby point; trail entrance ; (please stay on trail) to enter a mixed oak-aspen-spruce woods; FMI visit www.nature.org

CUTLER/TRESCOTT

Bog Brook Cove Directions: take Rte. 189, continue 1.1 miles on the road, go straight at an intersection with Bog Brook Road, near the midway point. Moose River Road ends at the parking area. Use this lot to access the universally accessible trail, the beaches at Moose Cove, the Chimney Trail, and the Ridge Trail; features gravel and cobble beaches, breathtaking views of the Bold Coast and universally-accessible trail; FMI or a printable map visit <https://www.mcmt.org>

LUBEC

Located directly along the South Lubec Road, the **Alan Brooks Salt Pond** provides a scenic view of Lubec Channel as well as two intriguing tidal salt ponds. Approximately half of the 4.4 acre property is composed of Spartina saltmarsh which is a rare natural community type in Maine. This preserve was acquired with the support of the Land for Maine's Future program in 2008. Directions: Take US Route 1 and turn right on State Route 189 East. Follow Route 189 east approximately 10 miles to South Lubec Road. Turn right onto South Lubec Road and in 0.6 mile, the destination will be on the left.

Klondike Mountain take US Rte 1 to Rte 189, leading to Lubec, after 9 miles, turn left on the North Lubec Rd at McFadden's Variety, go 1 mile to the Klondike Mountain Preserve sign on the left and park in the parking area. Bald nubble summit with a 360 degree view of the surrounding bay and landscape; 46-acre preserve, originally owned by a local family which raised dairy cows

and apples in the surrounding pasture near the base of the mountain. The name of the mountain references the story of two men (1897) devised a scheme claiming that they could extract gold from the nearby seawater, the men worked as con artists who — after hiring hundreds of workers and collecting funds from investors — fled the area never to be prosecuted for their deception.

Cobscook Shores free public access, Huckins Beach Trail; Old Farm Point Shorefront Park; Reynold's Brook - Orange River Wildlife Preserve and Paddle; Whiting Bay Beach Picnic and Paddle; Race Point Meadow and Reversing Falls Trail; Morong Cove Picnic and Paddle; South Bay Narrows; Black Duck Cove; Pike Lands Cove Crescent Beach and Lagoon; Denbow Bluffs; and more; privately owned by Cobscook Shores Inc., a family funded Maine charitable foundation. FMI and maps visit cobscookshores.org

Boot Head, Lubec Directions: take South Lubec Road toward Quoddy Head State Park and bear right in 2.7 miles onto Boot Cove Road. Travel 3.9 miles to the parking areas on both sides of the road and the trailhead on the left; 2.0 miles; catch the sun rising over the Grand Manan Channel; terrain is level in the beginning; head across the bog bridging to a viewpoint of the bog on the right; approach quietly and remain alert for spruce grouse in this area. Ahead reach a junction and the start of a loop. The turn left leads to Boot Cove, a wide cobble beach (please respect the privacy of our neighbor, who owns the northern part of the beach)

Quoddy Head State Park 5.5 miles of groomed hiking trails, a candy-striped lighthouse (schedule in calendar of events) 9am to sunset; FREE; Pets: Welcome; (207) 733-0911

Pike Lands take US Rte 1 to Lubec, after 9 miles, turn left on the North Lubec Road at McFadden's Variety, go 5 miles to the Downeast Adventures sign (on the right) near the end of the paved road, park past the sign on either side of the road; two open-access properties along the North Lubec Rd; at one time the entire property was owned by esteemed naturalist Radcliffe Pike who planted an eclectic variety of horticultural plants now featured as an educational arboretum. The two properties also include a total of 1.5 miles of hiking trails which traverse a unique variety of plant, bird, and wildlife habitats as well as a sandy beach. This preserve was acquired with the support of the Land for Maine's Future program in 2005.

ROBBINSON

Shares a trail system weaving through forests and lakes with Calais. Check out the information on the clubs on page 22.



BEALS

Great Wass Island Preserve A 4.5-mile trail system; unique forests and wetlands, exposed granite bedrock drops steeply into the sea, giving evidence of the "Fundian Fault," a long crack in the Earth's crust that extends from the Bay of Fundy to the coast of New Hampshire. Due to the extent of exposed bedrock and uneven terrain, the trails may be difficult or even dangerous in bad weather. Hikers should be particularly careful when hiking in dense fog—a frequent feature of the preserve. Please come well prepared for any kind of weather, and be sure to wear sturdy shoes suitable for a long hike through all kinds of terrain. Due to the terrain, your hike will take you longer than you think—you should allow yourself six hours to complete the full 4.5-mile loop. Visiting Guidelines: day use only, no camping, no fires, carry out all trash, leave no trace, bikes and motorized vehicles prohibited, no pets, stay on the trail

Little Cape Point Trail (2.2 miles): leads to the shore at Cape Cove and Little Cape Point. It winds through deep moss-floored spruce and fir forests interspersed with open ledges of jack pine woodland. After about a mile, these ledges offer beautiful views of a coastal raised bog. Further on, a boardwalk allows the visitor to walk through a sedge-shrub marsh without harming the vegetation. After the trail reaches the shore, it is just a short walk northeast along the shore to Little Cape Point (3-hour round trip).

Mud Hole Trail (1.2 miles): The left fork 100 feet east of the parking lot leads to the edge of a long, narrow, fjord-like tidal cove known as the Mud Hole. From there the

trail winds east to Mud Hole Point, where it intersects with the Shoreline Trail.

Shoreline Trail (1.1 miles): Hike along pink granite cliffs that are exposed to the waters of the Gulf of Maine. This trail offers spectacular views of the islands of Eastern Bay. Just northwest of Little Cape Point, the trail takes you along a cobble beach formed by the force of the ocean. Shoreline Trail intersects the Little Cape Trail on Little Cape Point. Note that the trail is directly on the coast and is not blazed.

CAMPOBELLO

Herring Cove Provincial Park NB Canada; includes six unique trails of varying length, a campground and golf course. (see more detailed info and map in the camping section)

Roosevelt Campobello International NB, Canada; park opens in May.

Fox Farm Loop 1.8 mi, coastal / lighthouse views

Raccoon Beach–Liberty Point Loop 4.7 mi, numerous narrow foot bridges; views from Liberty Point; blazed, flat, easy trail

Customs House Trail 1.7 mi, easy route, takes an average of 36 min to complete

Raccoon Beach–lower Duck Pond 2.4 mi, out-and-back trail; easy route; 49 min

MACHIAS

Machias River Preserve 5.5 -mile trail network of interconnecting hiking trails that provide scenic and recreational access to the river as well as the Down East Sunrise Trail; managed as a community forest with the goal of balancing low-impact forestry, outdoor recreation, wildlife habitat, educational opportunities, and river protection; parking: Rte 1A in Machias, 0.5 mile south of the Down East Community Hospital and the second is on Rte 1A in Whitneyville, about 0.3 mile north of the bridge over the Machias River. From the Sunrise Trail, ATVs and snowmobiles will find small parking areas where the Homestead Trail and Hemlock Trail intersect with the Sunrise Trail. As well as a large parking area across the trestle bridge in Whitneyville.

Machias River Walk an easy 5-6 miles long gravel path along the Machias River used by hikers, cyclists and mostly four wheelers.

What to do CAMPING & PADDLING

Famous for its rocky shores and numerous bodies of water, Maine is a haven for canoeing, kayaking and paddle boarding - all activities that go great with camping in the vast outdoors of Maine.

MARION TOWNSHIP

Rocky Lake Public Lands has eleven primitive campsites; South Bay on Rocky Lake, two sites can accommodate medium RVs and two are walk-in tent sites (there are additional walk-in sites at Mud Landing). Water-access sites include: Loose Rock (a lean-to), Eagle Ledge (on Second Lake); Lower Riffles (E. Machias River); West Beach, Piney Point, and Rocky Lake Island; hand-carry boat access point at South Bay; parking for six cars at South Bay, and two cars at Mud Landing

BAILEYVILLE

The St Croix River has a long heritage and serves as the narrow international boundary between Canada and the US. The area of interest to most canoeists is the 33 mile wilderness from the control gate at Vanceboro, ME and St Croix, NB to the Grand Falls dam.

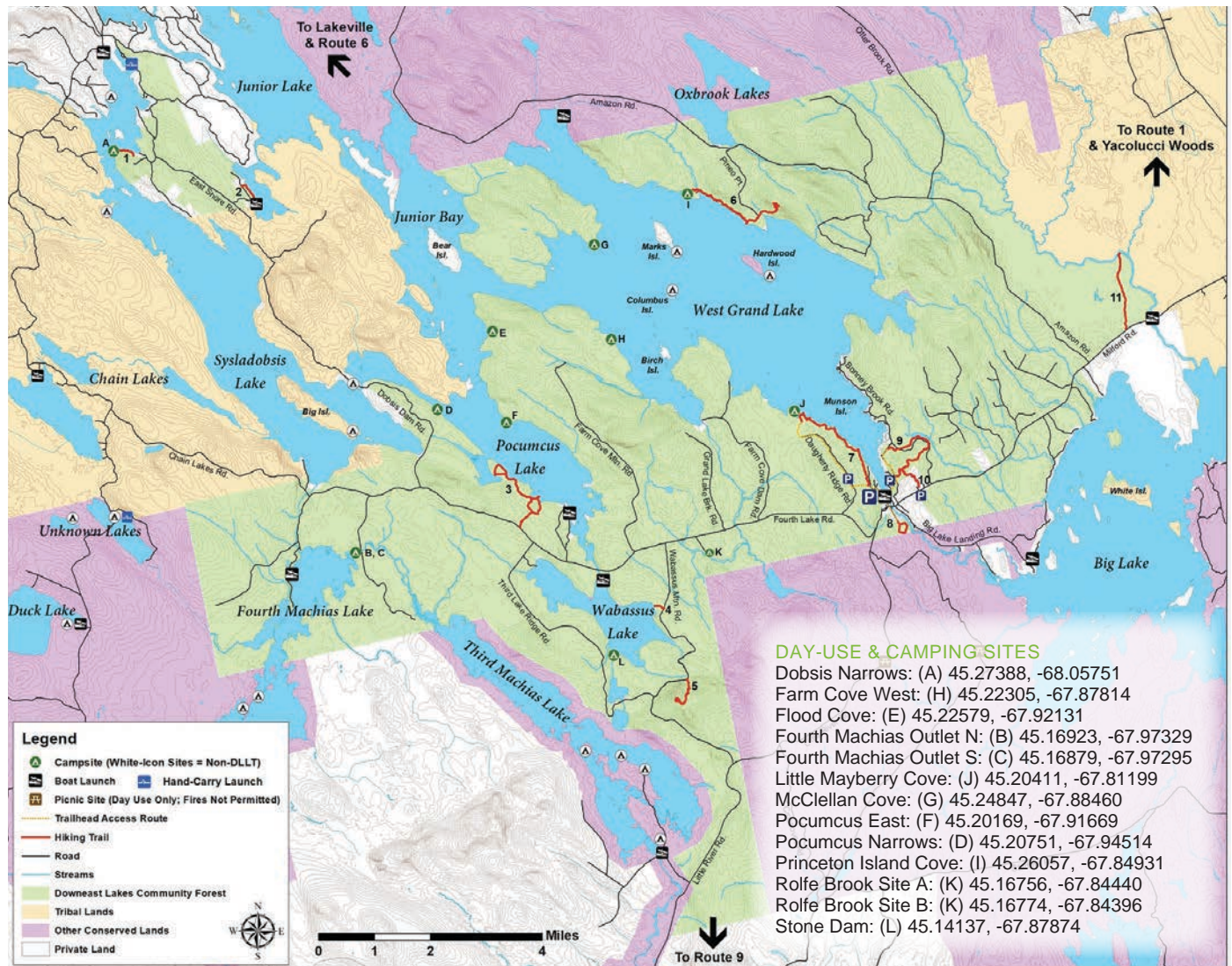
Class I and II rapids, with one Class III pitch. There is some flatwater. Since the flow is controlled, it is easily paddled from May until Oct. The flow is determined by a system of dams and rainfall. Water levels are monitored

CALAIS

Keenes Lake Family Campground 10 miles from Canadian Border, crystal clear lake. RV storage, access to ATV trails, cabin rentals, large wooded and private sites, boat ramp, open water kayaking, hiking trails. boat rentals, arcade, themed weekends, activities, pancake breakfast, pets welcome. 70 Keenes Lake Rd., Calais FMI (207)454-2022 or Facebook page.

GRAND LAKE STREAM

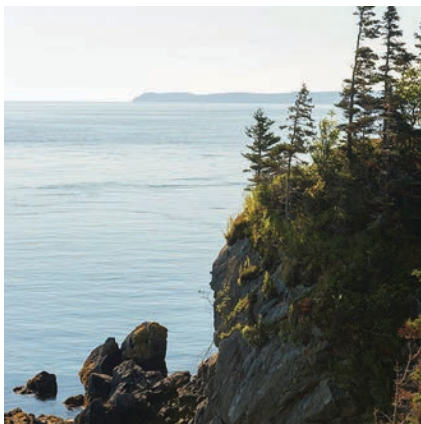
Downeast Land Lakes Trust has eleven water-accessed sites on several area lakes and streams. Two sites on Rolfe Brook are drive-up only, about four miles west of town, both are available for day-use and camping. Each site has a privy and picnic tables. Camping at DLLT sites is free, available on a first-come basis; three -night maximum stay. Campfires are allowed with a permit from the Maine Forest Service at (207) 827-1800. See map below.



CAMPOBELLO

Herring Cove Provincial Park 136 Herring Cove Rd, Welshpool, NB Canada; accessible by taking two ferrie or alternatively by driving through Maine six unique trails of varying lengths; Camp by the sea at Herring Cove Provincial Park. The campground offers 88 campsites (40 with electricity) and five rustic shelters; fire pits, restrooms, picnic tables, kitchen shelters and playgrounds are all available on-site. The park also features a 9-hole golf course with pro shop. FMI call (506) 752-7010 or email ac.bng@skrapbnsrap

Rock of Gibraltar 1.24 mi. (linear length); easy; a large boulder was left along this trail over 10,000 years ago. It's no wonder U.S. President Roosevelt had a tea house nearby on Glensevern Lake.



Adams Estate Promenade 0.62 mi. (linear length); intermediate; the forest trail is part of the original Adams Estate (1914 to 1997). The trail passes a small man-made pond. Its ice was used for refrigeration in ice houses during the summer.

Herring Cove Loop 2.914 mi. (loop); intermediate; short gravel road passes through a spruce forest and leads to Herring Cove beach, passing a secluded picnic area whose presence is indicated by a sign in the shape of a teddy bear (teddy bear was Theodore's nickname Roosevelt).

Herring Cove Beach 1.116 mi. (linear); easy; at low tide explore this expansive beach that changes from sand to baseball-sized rocks across its 1.2-mi. length. At high tide follow the grassy edge of Glensevern Lake

Carriage Road 1.302 mi. (loop); intermediate; the old carriage and logging road travels through a moss-laden forest and near streams on the way to Herring Cove Beach.

Eagle Hill Nature Trail 0.46 mi, wide boardwalk; travels through Eagle Hill Bog

Lake Glensevern 0.93 mi. (linear); intermediate; the Roosevelt family used this



old carriage road to access a tea house on Glensevern Lake near Herring Cove. The spruce forest transitions into a hardwood forest before reaching the lake.

Eastern Head Cove Trail 0.434 mi. (linear); intermediate; continue past the lookout platform and walk on an old road until you descend down to the gravel beach at Eastern Head Cove.

Friars Bay 0.372 mi. (linear); intermediate; short trail starts at a man-made pond and travels through a mature spruce forest. The trail cuts a deep path through the moss as it accesses the historic Roosevelt estate.

ALEXANDER

Pleasant Lake Campground is located halfway between Bangor ME and Saint John, N.B. Canada. Family camping with planned

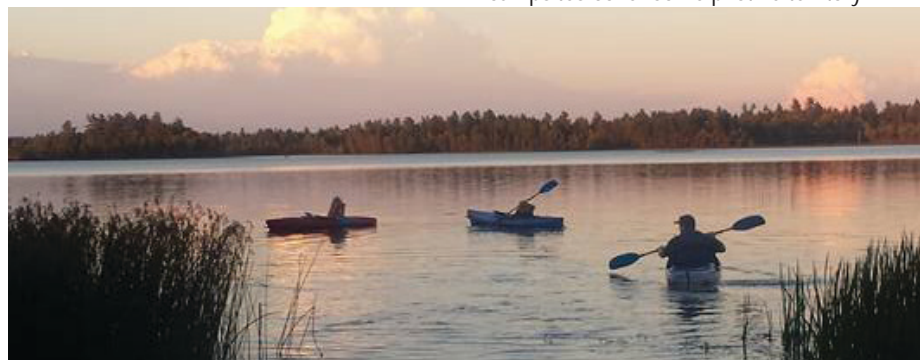
activities, swimming and boating, sandy beach, playground, large pull through sites. 50 amp. 371 Davis Rd , Alexander; (207) 454-7467

DENNYVILLE

Cobscook Bay State Park is surrounded on three sides by the salt waters of Cobscook bay has over 100 campsites, The name Cobscook comes from the Indian word meaning "boiling tides." The average tide is twenty feet. At low tide, adventuresome campers may dig for soft shell clam. (207) 726-4412

CUTLER

Cutler Coast Public Reserved Land (also known as the Bold Coast) has three designated tent sites near Fairy Head, and you'll have to hike four to five miles to reach them. It's worth it, though, because the trails that snake alongside Cutler Coast toward the campsites cover some pristine territory.



What to do

EVENTS & FESTIVALS

continued

continued from page 32

37th Eastport Salmon and Seafood Festival, Aug 30-31. Since 1987, Eastport has celebrated the end of summer by honoring our connection to the sea with food, wine, local craft beer, live music, salmon dinner artisans and more. Enjoy this beloved community event with neighbors and friends, old and new. FMI www.eastportchamber.net/salmon

SEPTEMBER

Community Dinner, Game Night & Fiber Circle; free home-cooked meal, games, music and fiber; First Monday of the month 5pm-8pm; FMI cobscookinsitute.org

Lubec Pirate Invasion; Saturday of Labor Day Weekend. An annual duel over the best of pirates and plunder. Pirates from across the country arrive by land, sea and air. Admission FREE; FMI visit www.visitlubec.com

20th Eastport Pirate Festival; Sept 4th-7th, yearly the weekend after Labor Day. Fun family weekend of Pirate themed activities along the waterfront. Admission FREE, FMI visit www.eastportpiratefestival.com

Harvest Fair & Fiber Festival; Sep 14, 9am-4pm; Machias Train Station and Pellon Center, Machias. Vendors, food, farmers market www.machiaschamberofcommerce.com

Fall Festival; Sep TBD, 12 - 4pm, experience Cobscook Institute's campus, and explore homeplace activities; cider pressing, tasting, fiber arts, group projects, live music; FMI cobscookinsitute.org

Common Ground Fair; Sep 19-21, gates open each day at 9 am; Unity, Maine; Vendors open until 6 p.m. on Friday and Saturday, 5 p.m. on Sunday.

Apple Fest; Sep, 8am - 2pm; St. Anne's Episcopal Church, Calais, ME. Breakfast, pies, jellies, crafts. Admission FREE; TBA, FMI visit stannescalais.org

OCTOBER

Community Dinner, Game Night & Fiber Circle; free home-cooked meal, games, music and fiber; First Monday of the month 5pm-8pm; FMI cobscookinsitute.org

Baileyville Octoberfest; first weekend in Oct; Baileyville; arts, crafts, food vendors, adult & childrens' activities and demonstrations

Annual Perry Harvest Festival; Oct TBA; Perry, ME; fair w/ over 90 vendors; arts, crafts, farmer's market, live entertainment; check Perry Harvest Festival on Facebook

Scarecrow Contest; Oct, Main Street, Calais, ME. Main Street poles will be decorated with scarecrows for your viewing and photo taking fun. Admission FREE. Sponsored by Calais Downtown Revitalization Coalition

Black Magic Bash; Oct TBA; Halloween custom party at the Calais Motor Inn, Calais, Maine; hosted by the Lioness Club; admission will be donated to local charity

Witches of Eastport, Saturday October 25 all day. Pumpkin carving, witches broom, and wizard wand making, face-painting and more. Come at noon to create your pumpkin racer for the always hilarious pumpkin derby. Witches parade and community witches dance led by the Eastport Elementary Cheer squad and more. FMI visit www.eastportartfests.org

Trunk or Treat; Oct. TBA, Walmart, Calais, Maine; before dusk.

Auto Fall Foliage Tour; Oct; Moosehorn Wildlife Refuge, Charlotte Road Entrance, Baring, ME. Look for signs that say Auto Foliage Tour is open. Admission FREE. (207) 454-1700; www.fws.gov/refuge/moosehorn

NOVEMBER

Community Dinner, Game Night & Fiber Circle; free home-cooked meal, games, music and fiber; First Monday of the month 5pm-8pm; FMI cobscookinsitute.org

Harald Saeverud Music Program; Fall/ Winter Event; held in Nov/Dec each year; Events held in Machias, Eastport and Calais. FMI see www.hsmusicprogram.com

Community Tree Lighting / Shop Small Saturday; the Saturday after Thanksgiving, 10 am - 5 pm, Calais; St Croix Valley Chamber of Commerce event; shop local promotion; tree lighting in Triangle Park at dusk with carolers, hot chocolate and more.

DECEMBER

Community Dinner, Game Night & Fiber Circle; free home-cooked meal, games, music and fiber; First Monday of the month 5pm-8pm; FMI cobscookinsitute.org

Lioness Christmas Parade & Moonlight Madness; first Friday of Dec; Main St., Calais. Christmas parade starts at 6 pm, shops open late, specials throughout town.

Baileyville Christmas Parade the second Friday of Dec; Main St., Baileyville. Christmas parade starts at 6 pm,

New Year's Eve events posted in January.

Lioness Christmas Parade
in Calais is
always a
family fun
event to kick
off the season!



International Homecoming Festival



typically held at the Calais Elementary School on Thursday afternoon. Concerts can be heard going both ways on the river. The Saturday Street Fair hosts many craftsmen, vendors, activities, a parade, craft shows, and so much more; ending with the spectacular Duty Free

The International Homecoming Festival celebration brings two international communities together. St. Stephen, New Brunswick, Canada and Calais, Maine, USA start the celebration with hands across the border, where the mayors of both communities and a small parade come together on the Ferry Point Bridge to shake hands. The first weekend in August, after New Brunswick Day, marks the begin-

and only international election was held on the U.S.-Canadian border. Bob Treworgy, Calais, was elected to serve as mayor of the international community from June 30, 1961 to July 8, 1961. The program for Frontier Week is 100 pages long. The booklet listed nine days of events. It included messages of congratulations from President, John F. Kennedy; Minister, John Diefenbaker and other political notables. Original poetry in the program was interspersed with local histories, and advertisements from nearly every business in the area were included.

In present day, International Homecoming Festival is a five day event, celebrating on both sides of the St Croix River. The children's street dance starts on Wednesday night. The Peanut Fair is



Fireworks Close Out the Festival



The always popular Street Dance

Americas, Hardwicke's Fireworks display.

Each year a group of volunteers take on the challenge of planning the festivities, and raising

small



The Parade is always a big hit for young and old alike.

the funds to for the activities. It is with support from our local merchants, civic groups, organizations and citizens that this festival happens.



Street Fair Vendors

ning of the international activities. This sense of community began with the first settlers. Even with Americans on one bank and Loyalists on the other, holding opposing sides during the Revolutionary War, the relationship has been successful for over two centuries.

International Frontier Week 1961, was the predecessor of today's International Festival, and it was a big deal. The first



Calais Lioness Superdraw during the Street Fair

2025 INTERNATIONAL HOMECOMING FESTIVAL
AUGUST 6-10 | CALAIS, ME | ST. STEPHEN, NB

THE trails Motorized and Biking Fun



Breakneck Mountain Sno-Riders Maintains 100 miles of trails in Alexander, Crawford, Cooper and Township 19; open 24/7; rest rooms, kitchen and seats 40

East Grand Snowmobile Club Danforth, ME; 80 miles of well groomed trails; Troy Fish (207) 538-6980

Grand Lake Snowmobile Club maintains two sets of trails; 42.1 miles of municipal trails, including 28.1 miles of ITS 84, connecting Calais to Old Town, Maine. All trails open to public. Lodge in town, open year round, the Canalside Cabins, FMI call (207) 227-8457 or email grandlakesnowmobileclub.com

Ridge Riders Trail Club Machias; 700 miles in the local trail system; for more info email: rrtrailclub@yahoo.com

Grand Lakers ATV Club Danforth; for more information call the president, Roger Rossignol at (207) 448-7739; to become a member contact Linna McLaughlin at (207) 448-7088

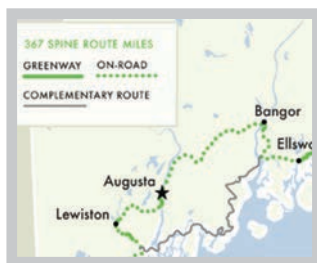
Sunrise Snowmobilers Formed in Calais in the 1970s; approximately 21 family members and 16 business members. This is strictly a snowmobile club, which maintains approximately 40 miles of trails. All trails open to the public. Trails connect to the Down East Sunrise Trail through the Moosehorn National Wildlife Refuge.

Sunrise Trail Riders ATV Club Calais; always seeking new members; \$20 annually; maintains 5 miles of trail. All trails are open to the public.

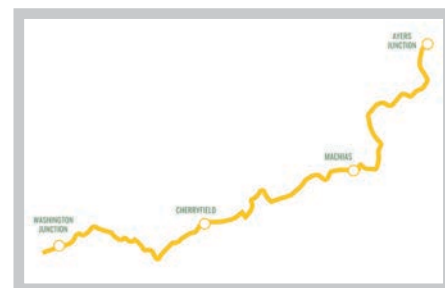
St. Croix Trail Riders formed in the 1970's in Baileyville. Both a snowmobile and ATV club. Maintains 48 miles of multi-use trail open to the public. Trails connect with trails maintained by Grand Lake, Breakneck, Calais, and connect with the Down East Sunrise Trail via trails maintained by other clubs.

Robbinston Bushwackers club is strictly ATV, maintaining 48 miles of trails, most of which are multi-use. All trails open to the public. The trails are accessible to the Sunrise Trail through trails maintained by other clubs.

Princeton Pathfinders FMI email: princeton.pathfinders@hotmail.com



East Coast Greenway Spine Route: 336 miles. Protected Greenway 125 miles. www.greenway.org/states/maine



Bold Coast Scenic Bikeway 211-mile, on-road trail winding along the rugged Atlantic coastline through 23 Bold Coast communities; In Calais, the Bold Coast Scenic Bikeway joins with the northern points of the East Coast Greenway and US Bike Route 1, which extend south to Florida. When combined with the Bold Coast Scenic Bikeway, these interconnected, mapped on-road trails make it easy to plan single- and multi-day riding opportunities throughout the Bold Coast region and beyond. Cyclists carrying valid passports can cross the international border into New Brunswick, Canada from Calais into St. Stephen and from Lubec onto Campobello Island, home to Roosevelt Campobello International Park. For more information visit discoverboldcoast.com



Photo by Mark Roussel

Motorcycling the Area The roads and scenery of Washington County Maine provide lots to explore and is an experience unlike many others. Motorcyclists are treated to some wonderful views, tasty stops along the way and maybe best of all few other vehicles to compete for space on the highway.

Downeast Maine is a great destination for riders searching for a virtual scenic paradise to explore. Motorcycle rides take place among natural

beauty that remains largely unspoiled by time or man.

There are area coordinated rides for various events as well as local club events.

There are many local group rides that are open to the public or scheduled as part of community events. A couple places to find information on rides are the Facebook pages listed below.

Down East Biker Group: A place for local bikers to coordinate rides and support local bike runs.

Red Knights of Maine: Group of firefighters with a motorcycle addiction. A non-profit organization that promotes motorcycle safety while supporting various local charities.

Wabanaki Warriors MC (WWMC): Rides are open to the public and listed on the page along with other events. The address of the clubhouse on the Airline Rd is listed. Anyone with an interest in riding is welcome to stop in.

As of the date of this printing there were a few dates confirmed for rides. Check the sites above often during the riding season for updates on others as they are scheduled.



The St Croix Valley Chamber of Commerce has been working with local representatives, the Downeast Sunrise County Trail Coalition, the city of Calais, the towns of Baring and Charolette to finish the 87 mile, multiuse trail that runs from Ellsworth to Ayers Junction, into Calais, Maine.

Breakneck Mountain ATV a division of Sno-Riders; they share the Sno-Rider trails and have access to municipal roads. FMI call (207) 454-8775

Dennysville Snowmobile & ATV AKA the Eastern Rail Riders is located 1+/- mile west on Route 86, from U.S. Route 1 in Dennysville, Maine. Club house located on the Down East Sunrise Trail; open 24/7 all year. A place to stop for a soft drink or cup of coffee. The club maintains 75 miles of multi-use trails, of which 52 miles outside the Down East Sunrise Trail. All trails open to the public, FMI call (207) 263-6306 or email Dennysvillesnowatvclub@gmail.com

Sunrise Trail - Machias Rte 1; parking at boxcar, Station 98, west of causeway or on causeway (no trailers); four miles, Machias to East Machias; cross over extensive salt marshes and experience views across the Machias and East Machias rivers. The trail crosses the Machias Dike, where both flea and farmers' markets take place in the summer. A motel, ATM and nationally famous blueberry pie-making restaurant provide amenities just west of the causeway. Explore town, then consider a side trip to Roque Bluffs State Park for an on-road bike loop ride.

East Stream ATV Riders Clubhouse on East Stream Road, Cutler, Maine. FMI contact, Mike Look at (207) 255-4167

Downeast Trailriders East Machias; FMI call Grant Hanscom, (207) 557-7816

Sunrise Trail - East Machias East Machias to Rocky Lake Crossing, trail crosses US 1 and ME 191; seven mile trail length; limited parking at ME 191/DEST crossing; trail runs through fields and forest while paralleling ME 191. The trail intersects the southeast corner of Rocky Lake Public Lands, accessed by a multi-use trail, before swinging east toward Dennysville. It is just a short side trip to the boating and camping areas on Rocky Lake's shore; visit the East Machias Aquatic Research Center (EMARC) to learn about Maine's fisheries. Cutler Coast Public Lands, Cobscook Bay and Quoddy Head State Parks and lighthouse are recommended side trips. For maps and information visit sunrisetrail.org

20th Annual

Maine State Star Party

C A M P U N D E R T H E S T A R S

August 15th - 17th

ABOUT THE EVENT:

Founded in 2006 as an effort to bring together the Maine stargazing community and all those with a passion for astronomy, the Maine State Star Party is a free to the public annual gathering of astronomers across the state and greater New England Area. This event is open to astronomers of all levels are welcome. There is a shared free camping space, scopes for free viewing, trivia, and more!

WHAT TO BRING:

- Portable restrooms will be available onsite
- Food & Water
- Camping gear (tent, sleeping bag)
- Red Flashlights or Red Light Filters



[Click Here](#) or Scan QR Code to
Check Out Our Video From the
2023 Maine State Star Party



WHERE IS IT LOCATED:

Pembroke Fairgrounds
222 Old County Road
Pembroke, ME 04666

Friday 8/15/25

12:00 PM
-7:00 PM

Arrival & Set-Up

7:00 PM
-2:00 AM

**Open Sky Gazing &
Meet the Astronomers**

Saturday 8/16/25

All Day

Solar Viewing

Viewing through filtered telescopes will occur
throughout the day

2:00 PM
-2:45 PM

Deep Sky Imaging

Speaker: Tim Cushman, Amateur Astronomer
Winter Harbor, ME

3:00 PM

Astronomer of the Year Award

3:15 PM

Astronomy Jeopardy Game

8:00 PM

Evening Viewing

Sunday 8/17/25

11:00 AM

Check-out

Contact:

Charlie Sawyer

President, Downeast Amateur Astronomers



csawyer7@roadrunner.com

Business Directory

ART/MUSEUMS

Eastport Art Fests
eastportartwalk@gmail.com
www.eastportartfests.org or Facebook
Raye's Mustard Mill Museum
83 Washington St, Eastport (207) 853-1903
www.rayesmustard.com
Schoodic Sculpture
Symposium
PO Box 122, Stueben (207) 749-1536

ACCOMMODATIONS

Bellmard Inn
86 Main St., Princeton (207) 796-2261
www.bellmardinn.com
Big Lake RV Park
& Campground
55 True North Ln., Big Lake Twp
(207) 796-2987 www.biglakerv.com
Canalside Cabins
31 Canal St., Grand Lake Stream
(207) 796-2796 www.canalsidecabins.com
Hilltop Campground
317 Ridge Rd., Robbinston (207) 454-3985
www.hilltopcampgroundmaine.com
The International Motel
626 Main Street, Calais (207) 454-7515
www.internationalmotel.com
Keenes Lake Family
Campground
70 Keenes Lake Rd., Calais (207) 454-2022
http://keeneslakecampground.com
Kendall Farm Cottages
& Event Barn
20 Kendall Ln, Perry (207) 214-1124
https://www.kendallfarmcottages.com/
Redclyffe Shore Motor Inn
Route 1, Robbinston (207) 454-3270
www.redclyffeshoremotorinn.com

ACCOUNTING

H&R Block
109 North St., Calais (207) 454-3966
www.hrblock.com
Tammi Smith Tax &
Accounting Service
166 A North St., Calais (207) 454-0065
www.tammismith.com

APPLIANCES/SERVICES

Eastern Maine Appliance
337 North St., Calais (207) 454-3650
Androc Plumbing
484 North St., Calais (207) 454-2339

Border Electric
337 North St., Calais (207) 454-8619
www.borderelectric.com
Main St Laundry
346 Main St, Princeton... (207) 214-7025
Riverside Electric, Inc.
334 North St., Calais (207) 454-7815
www.riversideelectricinc.com

ATTORNEYS

Mahar & Clark
110 North St., Calais (207) 454-7641

AUTOMOTIVE

Kinney's Autocare
520 Main St., Calais (207) 454-8460
www.kinneysautorepair.com
Pratt Associates, Inc.
Automotive Sales / Service
143 S. River Rd, Calais (207) 454-0600
www.prattchevrolet.com

BANKS

Bangor Savings Bank
232 North St., Calais (207) 454-0223
54 Washington St, Eastport (207) 853-2534
1 Center Street Machias (877) 226-4671
www.bangor.com
Camden National Bank
344 Main St, Calais (207) 454-2123
6 M & M Place, Machias (207) 255-0041
51 Main St., Jonesport (207) 497-5902
29 Main St., Milbridge (207) 546-2521
www.camdennational.com
Downeast Credit Union
254 North St, Calais (207) 454-8940
23 Third Ave, Baileyville (207) 427-3333
211 Main St., Machias (207) 255-0172
www.downeastcu.com
First National Bank
319 North St., Calais (207) 454-2141
102 Washington St, Eastport
(207) 853-6270 www.thefirst.com
Machias Savings Bank
210 North St., Calais (207) 454-7178
127 Main St., Princeton (207) 796-5109
4 Center St., Machias (207) 255-3347
357 US Hwy 1, Columbia (207) 483-6561
38 Depot St., Danforth (207) 448-9048
138 North St., Houlton (207) 532-7996
www.machiassavings.com

CANOEING & KAYAKING

C&C Canoe
Salmon Brook Rd., Vanceboro... (207) 788-3885
http://ccc canoe.com/
Sunrise Canoe & Kayak
168 Main St, Machias (207) 255-3375
www.sunrisecanoeandkayak.com
St Croix International
Waterway Commission
(207) 952-9069 www.stcroix.org

CARGO FREIGHT/MOVING

A.N. Deringer
12 Whitney St., Calais (207) 454-3951
www.nderinger.com
Able Moving Services
P.O. Box 22, Baileyville (207) 316-3247
www.ablemovingmaine.com

CHAMBER OF COMMERCE

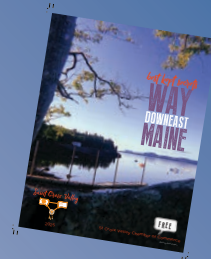
Eastport Chamber
of Commerce
141 Water St., Eastport (207) 853-4644
www.eastportchamber.net
Grand Lake Stream Area
Chamber of Commerce
15 Water Street, Grand Lake Stream
grandlakestream.org
Greater East Grand Lake
Chamber of Commerce
PO Box 159, Danforth (207) 448-2321
eastgrandlake.net
APPLE (Association
Promoting & Protecting the
Lubec Environment)
www.visitlubecmaine.com
Machias Bay
Chamber of Commerce
Station 1898, 2 Kilton Ln., Machias
(207) 255-4402 www.machiaschamber.org
St. Croix Valley
Chamber of Commerce
39 Union St., Calais (207) 454-2308
www.visitstcroixvalley.com
St. Stephen
Chamber of Commerce
34 Milltown Blvd, St. Stephen, N.B. Canada
(506) 466-7703 www.ststephenchamber.com
ECON DEVELOPMENT/CIVIC
Calais Downtown
Revitalization Coalition
P.O. Box 146, Calais... Find us on Facebook
Calais Rotary Club
P.O. Box 165, Calais (207) 454-2293
ridist7810.org/clubInfo/calais
Downeast Economic
Development
63 Broadway, Baileyville
11 Church St., Calais (207) 214-5926
Sunrise County
Economic Council
330 North St., Calais
7 Ames Way, Machias (207) 255-0983
sunrisecounty.org
EDUCATION / TRUSTS /
INITIATIVES
Downeast Lakes Land Trust
4 Water St., Grand Lake Stream
(207) 796-2100 www.downeastlakes.org
St Croix International Historic Site
84 Saint Croix Drive, Calais
207-454-3871... www.nps.gov/sacr

Interested in Advertising for 2026?

Contact us at:

visitstcroixvalley@gmail.com

Advertising opens October 2025



Business Directory

St Croix International
Waterway Commission
email: programs@stcroix.org
(207)-952-9069 www.stcroix.org
St Croix Regional
Technical Center
34 Blue Devil Hill, Calais (207) 454-2581
www.stcroixtech.org
Sunrise Trail Coalition
(207) 902-2240www.sunrisetrail.org
University of Maine at Machias
1160 Brien Ave, Machias (207) 255-1200
www.machias.edu
Washington County
Community College
One College Dr., Calais (207) 454-1000
www.wccc.me.edu

FITNESS

Bold Coast Runners
FMI see Facebook page (207) 214-2877
www.boldcoastrunners.org

FOOD & DRINK

Crumbs Cafe & Coffee Bar
405 Main St, Calais (207) 454-8995
www.crumbslunch.com
Divots & Outside Deck
@ St Croix Country Club 48 River Rd, Calais
(207) 454-3344www.stcroixcountryclub.com
Dunkin Donuts
131 North St., Calais (207) 454-3301
www.dunkindonuts.com
GameTime Sports Bar & Grill
159 Main St, Baileyville... (207) 454-4228
Find us on Facebook
Grampie Bill's Place
195 Main St., Calais (207) 952-43310
or visit Facebook
Jo's Diner and Pizzeria
200 North St.(food truck), Calais
(207) 454-8400....Find us on Facebook
Lubec Brewing
41 Water St, Lubec (207) 733-4555
or visit Facebook
McDonald's of Calais
191 North St., Calais www.mcdonalds.com

Mad Mardigans
28 North St, Calais.....(207) 952-9056
Find us on Facebook
St Croix Tap & Table
421 Main St, Calais.....(207) 454-4177
or check Facebook
Unleashed Nutrition
73 North St, Calais
(207) 207-507-7025 or check Facebook
**GOLF COURSE &
COUNTRY CLUB**
St. Croix Country Club
48 River Rd., Calais (207) 454-8875
www.stcroixcountryclub.com
**HOME IMPROVEMENT
SUPPLIERS**
Ace Homecenter
295 North St., Calais (207) 454-2309
www.calaisacehomecenter.com
Johnson's True Value
188 North St., Calais (207) 454-2551
www.truevalue.com
Hammond Lumber Company
372 South St., Calais (207) 454-2576
www.hammondlumber.com
Sherwin Williams
305 North St, Calais (207) 454-7518
www.sherwin-williams.com/
HEALTH SERVICES
Calais Community Hospital
24 Hospital Lane, Calais (207) 454-7521
www.calaishospital.org
Healthy Acadia
121 Court St., Machias,
(207) 255-3741....www.healthyacadia.org
INSURANCE
Down East Insurance Agency
254 North St. Calais @ Downeast Credit Union
(207) 427-3126 or 23 3rd Ave, Baileyville
www.downeastinsurance.com
FA Peabody Co.
254 Main St, Calais (207) 454-2556
www.fapeabody.com
Varney Agency Inc.
325 North St, Calais (207) 454-2227
varneyagency.com
MANUFACTURING
Woodland Pulp LLC
144 Main St, Baileyville (207) 427-4004
www.woodlandpulp.com
MOVING / FREIGHT
Able Moving Services
PO Box 22., Baileyville (207) 427-4004
www.ablemovingmaine.com
A.N. Deringer
12 Whitney St., Calais (207) 454-3951
www.nderinger.com
MUNICIPALITIES
Town of Alexander
50 Cooper Rd, Alexander....(207) 454-3011
alexandermaine.com
Town of Baileyville
63 Broadway, Baileyville....(207) 427-3442
www.baileyvillemaine.org
City of Calais
Church St., Calais....(207) 454-2521
www.calaismaine.org
Grand Lake Stream
15 Water St, Grand Lake Stream
(207) 796-2001....www.grand-lake-stream.org/
Town of Princeton
15 Depot Street Princeton.....(207) 796-2744

NEWS/RADIO

The Calais Advertiser
23 Church St., Calais (207) 454-3561
<https://www.calais.news>
Discover Maine Magazine
207-874-7720
info@discovermainemagazine.com

WQDY Inc. & WCRC
637 Main St., Calais (207) 427-7545
www.wqdy.fm or www.wcrq.fm

PERSONAL SERVICES

Divine Ink & Beauty
485 North St, Calais
(207) 952-4500 or or check Facebook
REALTORS

The Christopher Group
5 Main St, Blue Hill.... <https://www.tcgre.net>
Samra Kuseybi (207) 214-7401
Libby Bryant (207) 461-9170
Shirley Erickson (207) 255-6043
Aaron Currier (207) 200-1697
Realty of Maine
458 Main St., Bangor
Georgie Kendall (207) 214-1124
georgiekendall.agent.realtyofmaine.com

RENTAL SPACE

Kendall Farm Cottages
& Event Barn
20 Kendall Ln, Perry (207) 214-1124
www.kendallfarmcottages.com

SHOPS

C&E Feeds Calais Package Hub
& Community Market
482 North Street, Calais (207) 454-3666
www.candefeeds.com
Rachel Ashley Jewelers
293 Main St., Calais (207) 454-8814
Check Facebook FMI
Raye's Mustard Mill Museum
83 Washington St, Eastport (207) 853-1903
www.rayesmustard.com
West Quoddy Gifts
16 Loon Lane, Lubec (207) 214-5653
www.westquoddygifts.com

UTILITY SERVICES/REPAIR

Androc Plumbing
339 North Street, Calais (207) 454-2339
Border Electric
337 North Street, Calais (207) 454-8619
www.borderelectricinc.com
Dead River
18 South St, Calais (207) 454-7511
Eastern Maine Electric Co-Op
21 Union St, Calais (207) 454-7555
www.emec.com
Got Dirt Car Wash & Dog Wash
284 North St., Calais (207) 214-4079
FMI see Facebook
Main Street Laundry
46 Main St., Princeton (207) 214-7025
PCT Communications
483 North St., Calais (207) 454-2174
www.uscellular.com
Pioneer Broadband
34 Military St, Houlton (207) 335-1254
www.pioneerbroadband.net
Riverside Electric
334 North St., Calais (207) 454 7815
www.riversideelectricinc.com
VL Tammaro Oil Co
325 North St., Calais... (207) 454-7500
117 Main St., Baileyville... (207) 427-3775

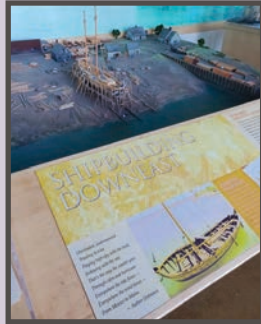
Join Us!

www.visitstcroixvalley.com
visitstcroixvalley@gmail.com
207-454-2308



Wabanaki Culture Center and Museum

The Wabanaki Culture Center and Museum is home to artifacts, historical displays and works of art of the Passamaquoddy and Penobscot Native American Tribes. Additionally, there is a Touch Tank which contains local sea creatures—fun for children and adults! This historic building also contains offices for Maine Indian Education, the Maine Visitors Center and the St. Croix Valley Chamber of Commerce. Free admission, and donations gladly accepted.



DREAM FIRST



We live by a simple idea, and hope you do too: Dream First, then go from there.

Because you can.



Find us on Facebook!

A Division of The First Bancorp • 800.564.3195 • TheFirst.com • Member FDIC

ENTREPRENEURS

2025 IS THE
“NOW” TO YOUR “DREAMS”

...to have your own business?

...to enjoy a more relaxed lifestyle?

...to shed the stress of urban living?

...to live in a beautiful environment?

If your answer is “YES” then give us a call.

UNLOCK YOUR POTENTIAL

with a team that is passionate about your success



DOWNEAST
economic development.

Calais, ME
Baileyville, ME
ewced@outlook.com
207.214.5926

**OPEN YOUR
BUSINESS**

JO'S DINER & PIZZERIA

*A Hometown Restaurant
Serving up Breakfast Lunch & Dinner*

**Dine in
Take Out
Delivery**



195 Main St, Calais 454-8400
www.jospizza.com

